

DSR-PD150/PD150P

RMT-811

SERVICE MANUAL

Self Diagnosis
Supported model

Ver 1.9 2004.07

DVCAM™

Mini DV Digital Video Cassette

InfoLITHIUM™ L SERIES

CI// Cassette Memory

MEMORY STICK



Photo : DSR-PD150

US Model
Canadian Model
DSR-PD150
AEP Model
Chinese Model
DSR-PD150P

C MECHANISM

NTSC model : DSR-PD150
PAL model : DSR-PD150P

SPECIFICATIONS

Video camera recorder

System

Video recording system

2 rotary heads
Helical scanning system
Audio recording system
Rotary heads, PCM system
Quantization: Fs32 kHz (12 bits, channels 1/2, channels 3/4), Fs48 kHz (16 bits, stereo)

Video signal

PD150: NTSC color, EIA standards
PD150P: PAL colour, CCIR standards

Usable cassette

Mini DVCAM cassette with the **DVCAM** mark printed
Mini DV cassette with the **Mini DV** mark printed

Tape speed

DVCAM format:
Approx. 28.218 mm/s
DV format SP mode: Approx.
18.812 mm/s

Recording/playback time (using cassette PDVM-40ME)

DVCAM format: 40 min
DV format SP mode: 1 h
Fast-forward/rewind time (using cassette PDVM-40ME)
Approx. 2 min and 30 s

Viewfinder

Electric viewfinder (B&W)

Image device

1/3 type CCD (3 Charge Coupled Device)
PD150: Approx. 380 000 pixels (Effective: Approx. 340 000 pixels)
PD150P: Approx. 450 000 pixels (Effective: Approx. 400 000 pixels)

Lens

Combined power zoom lens
Filter diameter 58 mm (2 3/8 in)
12× (Optical), 48× (Digital)
F1.6 - 2.4

Focal length

6 - 72 mm (1/4 - 2 7/8 in)
When converted to a 35 mm still camera

43.2 - 518.4 mm (1 3/4 - 20 1/2 in)

Color temperature

Auto, Indoor (3200K), Outdoor (5800K),

Minimum illumination

2 lux (F 1.6)

Input/Output connectors

S VIDEO input/output

Input/output auto switch
4-pin mini DIN
Luminance signal: 1 Vp-p, 75 ohms, unbalanced
Chrominance signal: 0.286 Vp-p (PD150), 0.3 Vp-p (PD150P) 75 ohms, unbalanced

VIDEO input/output

Input/output auto switch
RCA pin-jack, 1 Vp-p, 75 ohms, unbalanced, sync negative
AUDIO CH1/CH2 input/output
Input/output auto switch
RCA pin-jack, 327 mV, (at output impedance more than 47 kilohms)
Output impedance with less than 2.2 kilohms
Input impedance more than 47 kilohms

Headphones jack

Stereo minijack (ø 3.5 mm)

LANC control jack

Stereo mini-minijack (ø 2.5 mm)

INPUT1/INPUT2 connectors

XLR 3-pin, female, -60 dBu, 3 kilohms, +4 dBu, 10 kilohms (0 dBu = 0.775 Vrms)

DV input/output

4-pin connector
Speaker
Dynamic speaker (ø 20 mm)

LCD screen

Picture

2.5 type measured diagonally
49.9 × 37.3 mm (2 × 1 1/2 in)

Total dot number

200 640 (880 × 228)

General

Peak inrush current (PD150P)

(1) Hot switching inrush current, measured in accordance with European standard EN55103-1: 6.3 A (230 V)

Power requirements

7.2 V (battery pack)
8.4 V (AC power adaptor)

Average power consumption (when using the battery pack)

During camera recording using LCD
5.4 W

Viewfinder

4.7 W

Operating temperature

0 °C to 40 °C (32 °F to 104 °F)

Storage temperature

-20 °C to +60 °C (-4 °F to +140 °F)

Dimensions (approx.)

128 × 180 × 405 mm (5 1/8 × 7 1/8 × 16 in) (w/h/d)

Mass (approx.)

1.6 kg (3 lb 8 oz) main unit only
1.8 kg (3 lb 15 oz) including the battery pack, NP-F330, cassette PDVM-40ME, microphone and hood cap

Supplied accessories

See page 2.

— Continued on next page —

DVCAM™ DIGITAL CAMCORDER

SONY®

SECTION 6 REPAIR PARTS LIST

6-1. EXPLODED VIEWS

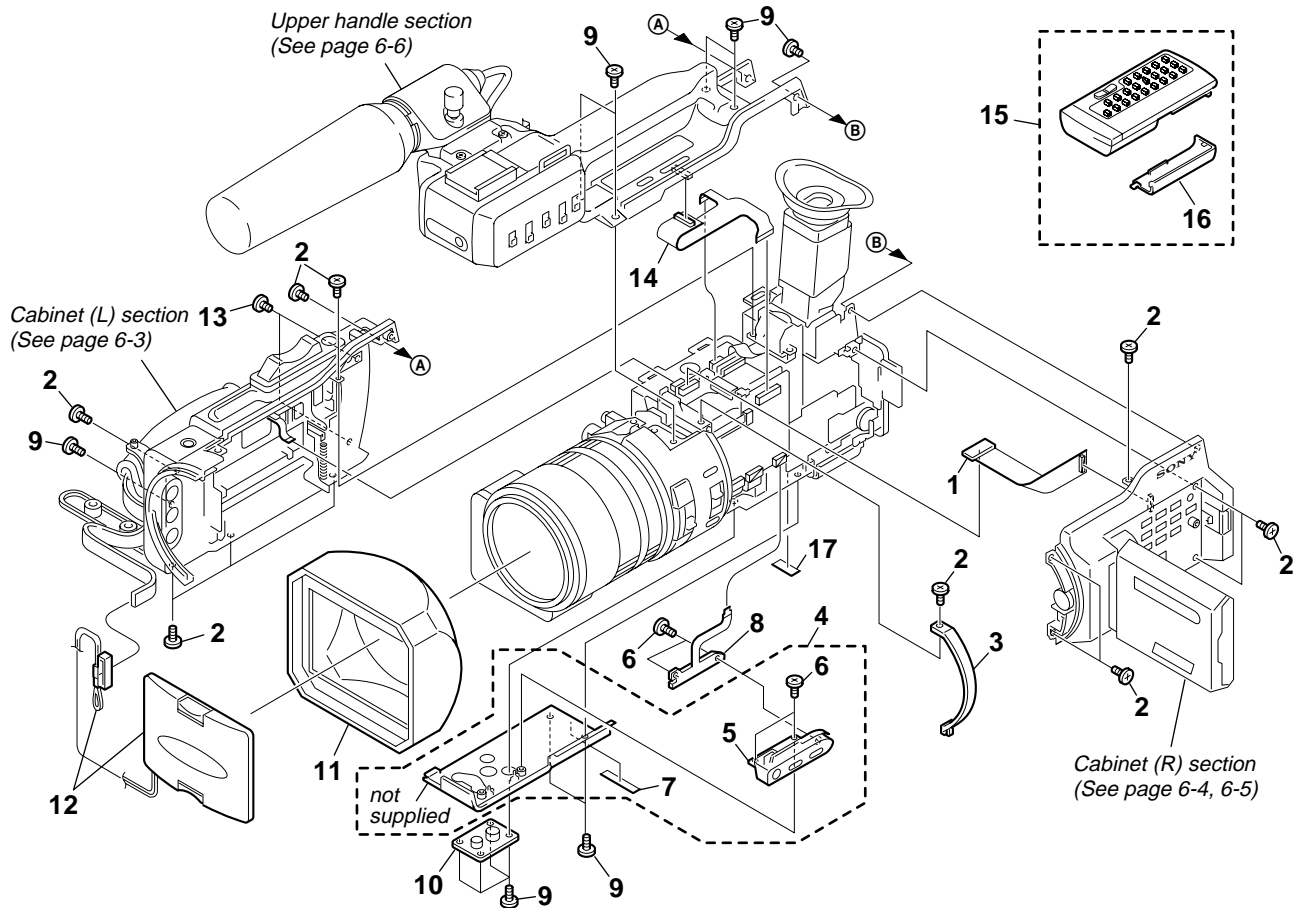
NOTE:

- -XX, -X mean standardized parts, so they may have some differences from the original one.
- Items marked “*” are not stocked since they are seldom required for routine service. Some delay should be anticipated when ordering these items.
- The mechanical parts with no reference number in the exploded views are not supplied.

The components identified by mark \triangle or dotted line with mark \triangle are critical for safety. Replace only with part number specified.

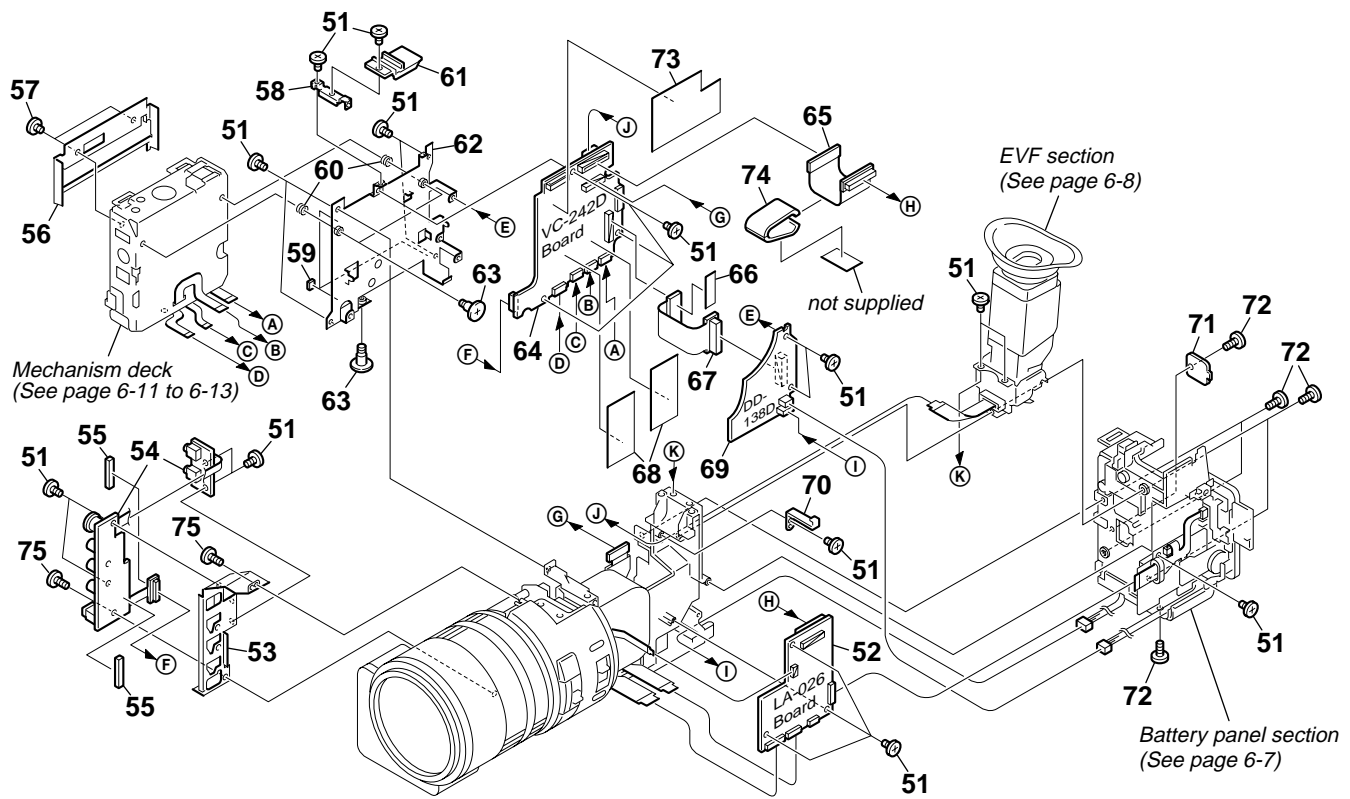
Les composants identifiés par une marque \triangle sont critiques pour la sécurité. Ne les remplacer que par une pièce portant le numéro spécifié.

6-1-1. OVERALL SECTION-1



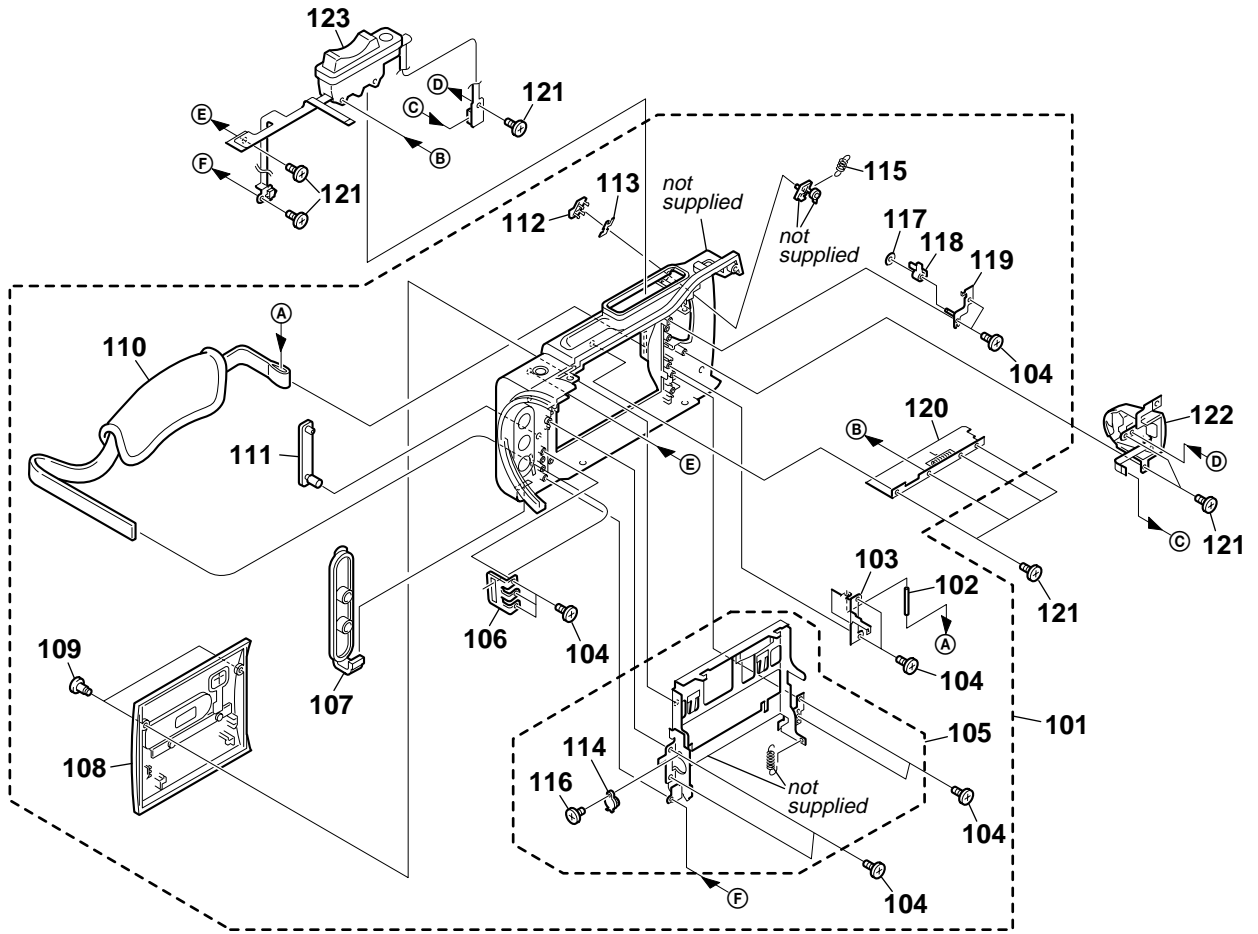
Ref. No.	Part No.	Description	Remarks	Ref. No.	Part No.	Description	Remarks
1	1-678-055-21	FP-187 FLEXIBLE BOARD		10	3-963-940-02	TABLE, TRIPOD	
2	3-053-121-21	BOLT (M2), SPRING		11	X-3950-590-1	HOOD ASSY, LENS	
3	3-060-683-01	PLATE, CF ORNAMENTAL		12	X-3950-568-1	CAP ASSY, HOOD	
4	X-3950-595-1	BOTTOM (D) ASSY, CABINET		13	3-053-121-61	BOLT (M2), SPRING	
5	X-3950-728-1	COVER ASSY, FBS (SERVICE)		14	1-678-067-21	FP-200 FLEXIBLE BOARD	
6	3-948-339-61	TAPPING		15	1-475-950-21	REMOTE COMMANDER (RMT-811)	
7	3-062-455-01	FOOT(B), RUBBER		16	3-053-056-01	LID, BATTERY CASE (FOR RMT-811)	
8	1-678-057-21	FP-189 FLEXIBLE BOARD		* 17	3-704-367-01	LABEL (FAROUDJA)	
9	3-053-121-41	BOLT (M2), SPRING					

6-1-2. OVERALL SECTION-2



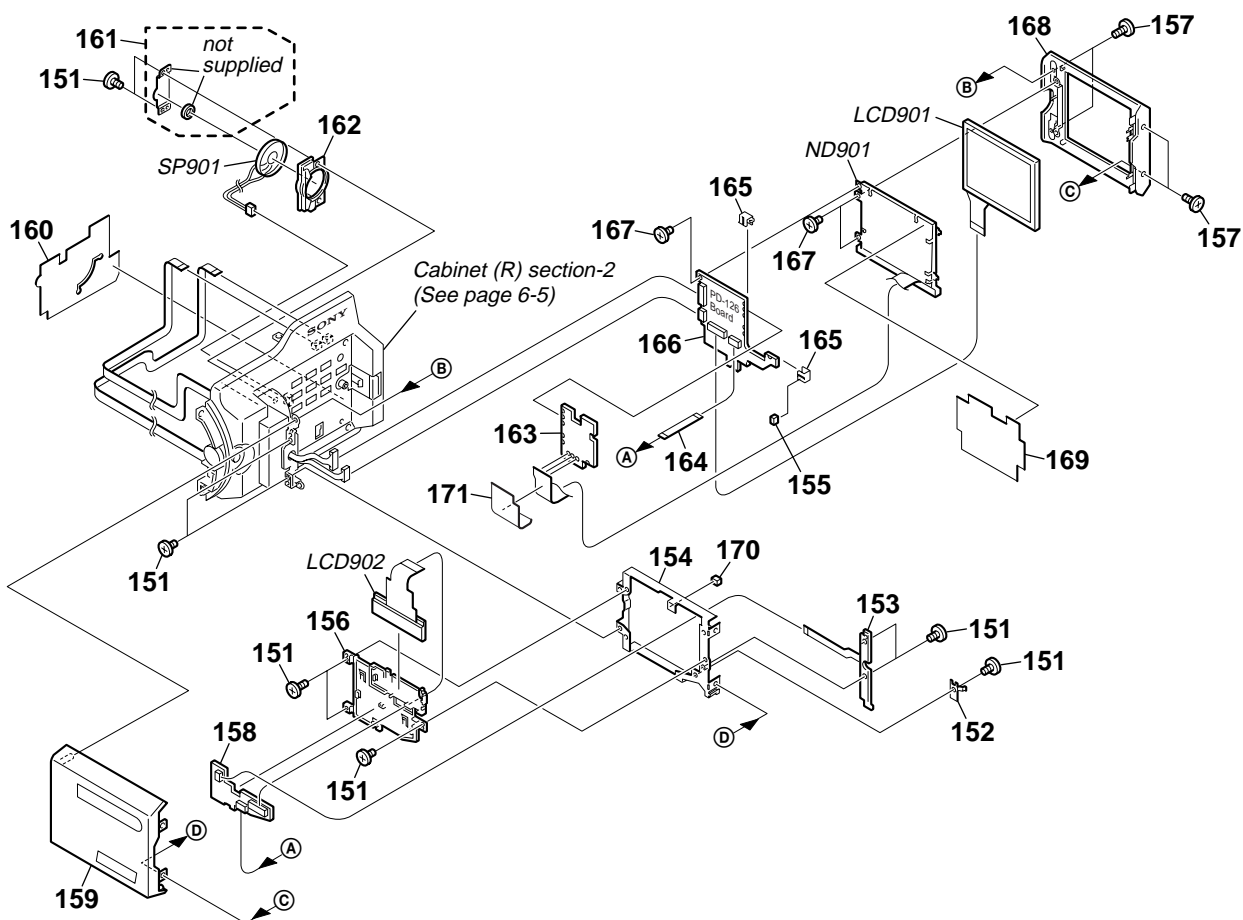
Ref. No.	Part No.	Description	Remarks	Ref. No.	Part No.	Description	Remarks
51	3-053-121-11	BOLT (M2), SPRING		64	A-7096-243-A	VC-242D BOARD, COMPLETE (SERVICE)	
52	A-7074-401-A	LA-026 BOARD, COMPLETE		65	1-678-054-21	FP-186 FLEXIBLE BOARD	
53	3-060-682-01	FRAME, JK		66	3-061-053-01	SHEET, FP191	
54	A-7074-402-A	JK-190 BOARD, COMPLETE		67	1-678-059-21	FP-191 FLEXIBLE BOARD	
* 55	3-053-354-01	CUSHION, CD FLEXIBLE		68	3-061-516-01	SHEET, RF FLEXIBLE	
56	3-060-673-01	LID, LD OUTER		69	A-7074-466-A	DD-138D BOARD, COMPLETE	
57	3-056-233-11	SCREW (M2), LOCK ACE, P2		70	3-060-787-01	CLAMP, FLEXIBLE	
58	3-060-684-01	JOINT, LA		71	3-060-677-01	COVER, CPC	
59	3-975-921-01	SHEET, VIBRATION PROOF		72	3-053-121-41	BOLT (M2), SPRING	
60	3-061-679-02	SPRING, MD GROUND		* 73	3-062-779-01	SHEET (VC)	
61	3-060-789-01	RETAINER, FLEXIBLE		74	1-469-830-11	FILTER, EMI (US)	
62	X-3950-571-1	FRAME ASSY, MD		75	3-053-121-21	BOLT (M2), SPRING	
63	3-988-464-01	SCREW (M2), STEP					

6-1-3. CABINET (L) SECTION



Ref. No.	Part No.	Description	Remarks	Ref. No.	Part No.	Description	Remarks
101	X-3950-591-1	CABINET (L) (D) ASSY (US)		112	3-060-551-01	KNOB, EJECT	
101	X-3950-687-1	CABINET (L) (D) ASSY (AEP)		113	3-060-549-01	SHEET, EJECT	
102	3-703-357-08	PIN(DIA. 1.6 SERISE)		114	4-634-290-11	DAMPER	
103	3-060-550-01	BRACKET (REAR), GRIP		115	3-060-554-01	SPRING, TENSION	
104	3-948-339-01	SCREW, TAPPING		116	3-968-729-81	SCREW (M2), LOCK ACE, P2	
105	X-3950-561-1	CS ASSY		117	3-669-465-01	WASHER (1.5), STOPPER	
106	3-051-871-01	BRACKET (FRONT), BELT		118	3-060-553-01	LEVER, EJECT	
107	3-060-540-11	COVER (AV), JACK		119	X-3950-585-1	SHEET METAL ASSY, EJECT	
108	X-3950-592-1	LID(D) ASSY, CASSETTE		120	X-3950-562-1	SLIDER ASSY	
109	3-060-790-01	SCREW (M2 STEP)		121	3-948-339-61	TAPPING	
110	3-060-548-01	BELT, GRIP		122	1-476-075-21	SWITCH BLOCK, CONTROL (PS-4980)	
111	3-060-541-11	COVER (L), JACK		123	1-476-025-21	SWITCH BLOCK, CONTROL (CF-4980)	

6-1-4. CABINET (R) SECTION-1



Ref. No.	Part No.	Description	Remarks	Ref. No.	Part No.	Description	Remarks
151	3-053-121-11	BOLT (M2), SPRING		164	1-678-062-11	FP-195 FLEXIBLE BOARD	
* 152	3-060-698-01	RETAINER, BL		* 165	3-051-232-01	CLIP, PCB	
153	1-678-063-21	FP-196 FLEXIBLE BOARD		166	A-7096-158-A	PD-126 BOARD, COMPLETE (SERVICE)	
* 154	3-060-688-01	FRAME, LCD		167	3-989-735-11	SCREW (M1.7), LOCK ACE, P2	
155	3-061-509-01	PAD(RIGHT), PD		168	X-3950-597-1	CABINET (M) ASSY, P	
* 156	3-060-687-01	HOLDER, PANEL		169	3-060-704-01	SHEET (N), BL SHIELD	
157	3-053-121-41	BOLT (M2), SPRING		170	3-061-510-01	PAD(UPPER), PD	
158	A-7074-414-A	HL-011 BOARD, COMPLETE		* 171	3-062-196-01	SHEET, BL INSULATING	
159	X-3950-598-1	CABINET (C) (D) ASSY, P		LCD901	8-753-050-52	ACX300CK-J	
160	3-060-796-01	SHEET, R FLEXIBLE PROTECTION		LCD902	A-7096-156-A	PANEL BLOCK ASSY, INDICATION	
* 161	X-3950-577-1	PLATE ASSY, SP RETAINER		△ND901	1-517-931-11	TUBE, FLUORESCENT,COLD CATHODE	
* 162	3-060-686-01	HOLDER, SPEAKER		SP901	1-529-590-11	SPEAKER (2.0CM)	
△163	1-418-876-11	TRANSFORMER UNIT, INVERTER					

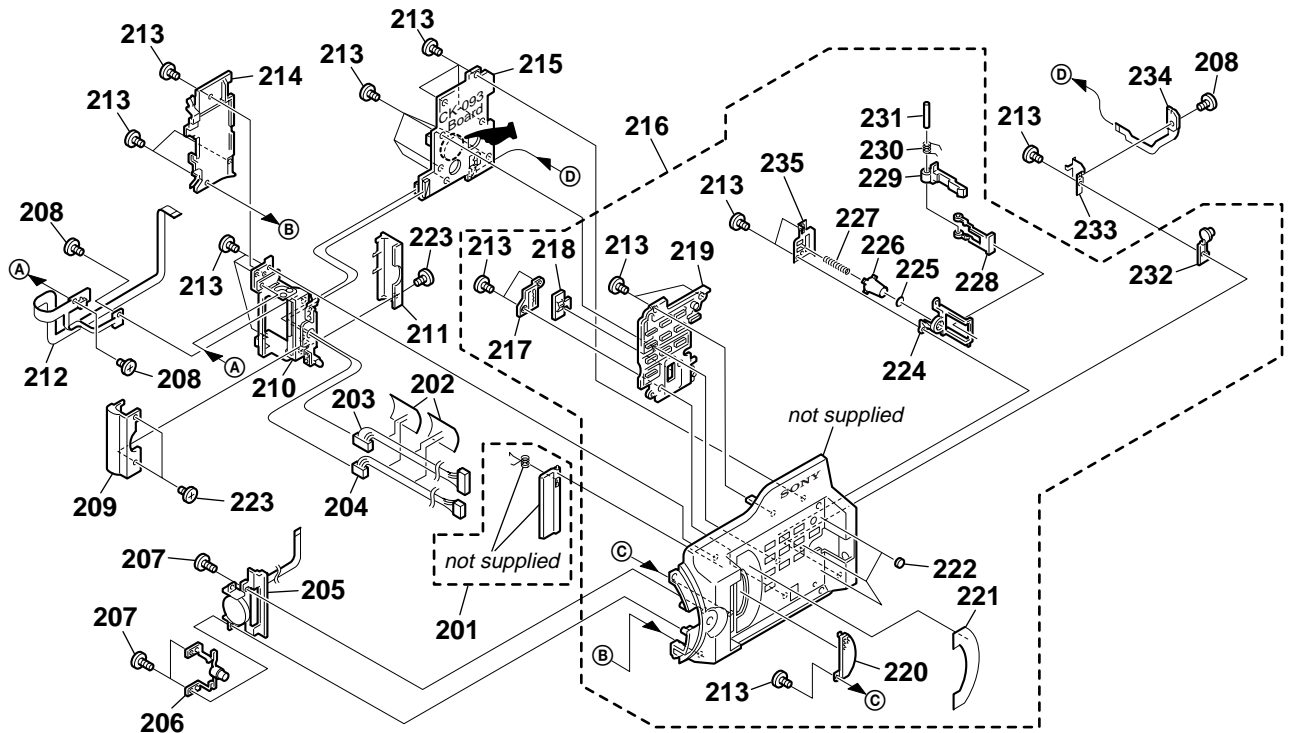
Note :

The components identified by mark △ or dotted line with mark △ are critical for safety. Replace only with part number specified.

Note :

Les composants identifiés par une marque △ sont critiques pour la sécurité. Ne les remplacer que par une pièce portant le numéro spécifié.

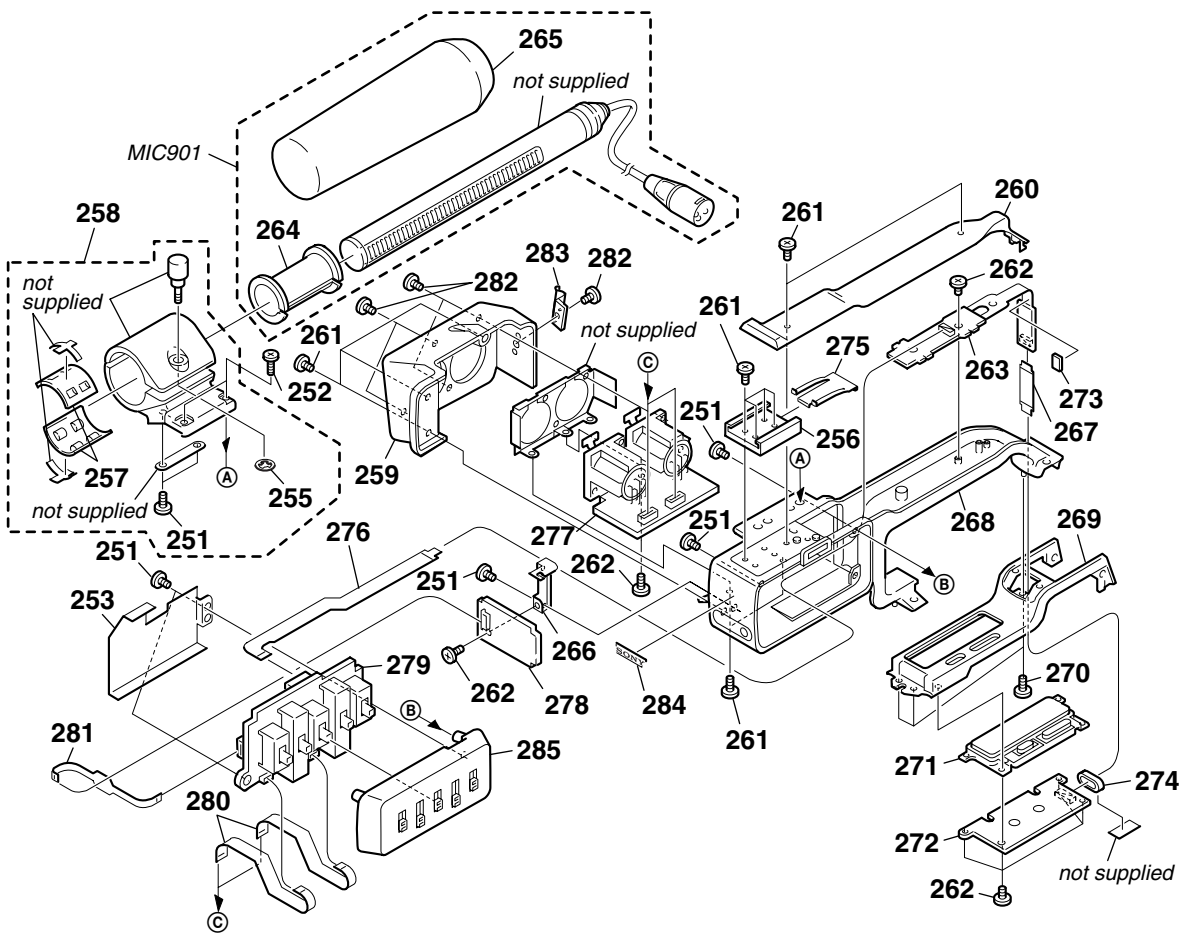
6-1-5. CABINET (R) SECTION-2



BT250 (Lithium battery) CK board on the mount position.(See page 4-59)

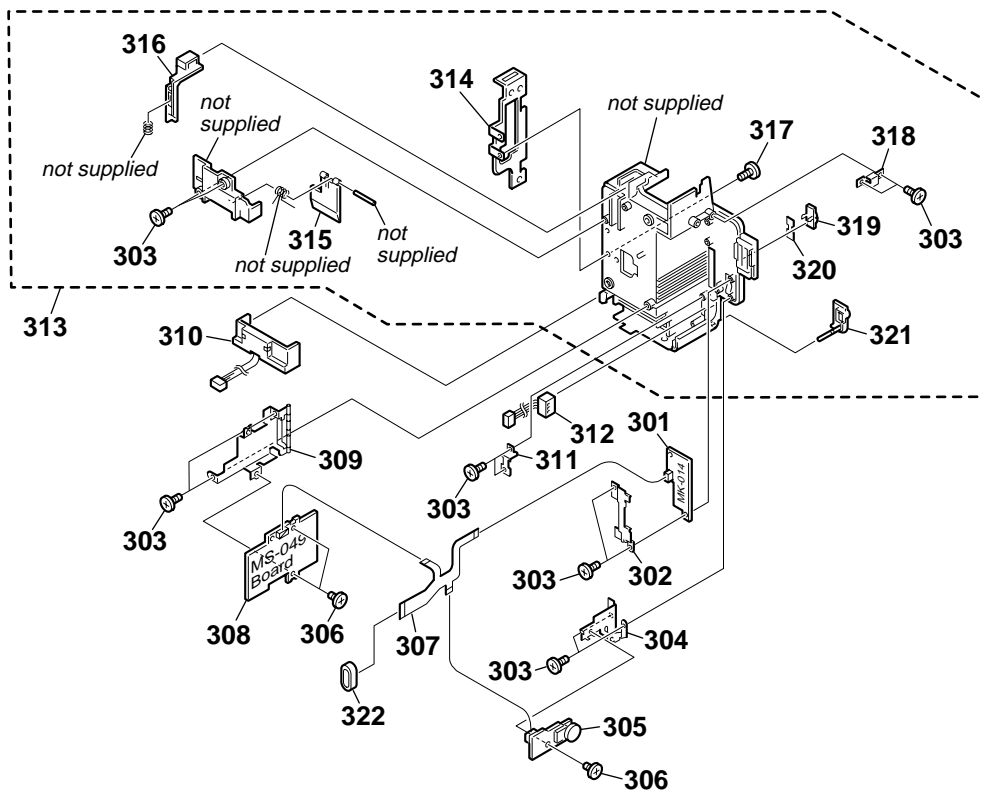
Ref. No.	Part No.	Description	Remarks	Ref. No.	Part No.	Description	Remarks
201	X-3950-599-1	DOOR (D) ASSY, BLIND		219	3-060-636-11	BUTTON, R	
202	3-060-795-01	TAPE, HARNESS FIXED		220	3-060-637-11	GRILLE, SPEAKER	
203	1-960-558-11	HARNESS (CP-094) (14P)		221	3-060-639-11	SHEET, PROTECTION	
204	1-960-557-11	HARNESS (CP-093) (8P)		222	3-052-521-01	CUSHION (2), PANEL	
205	1-476-183-11	SWITCH BLOCK, CONTROL (ED-4980)		223	3-989-735-01	SCREW (M1.7), LOCK ACE, P2	
206	3-060-689-01	BUTTON, BRIGHT		224	3-060-630-11	BASE, PANEL LOCK	
207	3-053-121-21	BOLT (M2), SPRING		225	3-060-641-01	PAD, PANEL (POP) UP	
208	3-989-735-11	SCREW (M1.7), LOCK ACE, P2		226	3-060-632-11	UP, PANEL (POP)	
209	3-060-693-11	COVER (FRONT), HINGE		227	3-060-633-01	SPRING, COMPRESSION	
210	X-3950-576-1	HINGE ASSY		228	3-060-638-01	KNOB, PANEL LOCK	
211	3-060-694-11	COVER (REAR), HINGE		229	3-060-643-11	CLAW, PANEL LOCK	
212	1-678-064-21	FP-197 FLEXIBLE BOARD		230	3-060-634-01	SPRING, PANEL LOCK	
213	3-053-121-11	BOLT (M2), SPRING		231	3-060-635-01	SHAFT, PANEL LOCK	
* 214	3-060-690-01	LID, HINGE		232	3-060-642-01	BUTTON, MENU	
215	A-7074-403-A	CK-093 BOARD, COMPLETE		* 233	3-060-691-01	BRACKET, MENU BUTTON	
216	X-3950-596-1	CABINET (R) (D) ASSY		234	1-678-061-21	FP-194 FLEXIBLE BOARD	
* 217	3-060-640-01	COVER, ZEBRA KNOB		* 235	3-060-631-01	BRACKET, PANEL LOCK	
218	3-060-644-11	KNOB, ZEBRA					

6-1-6. UPPER HANDLE SECTION



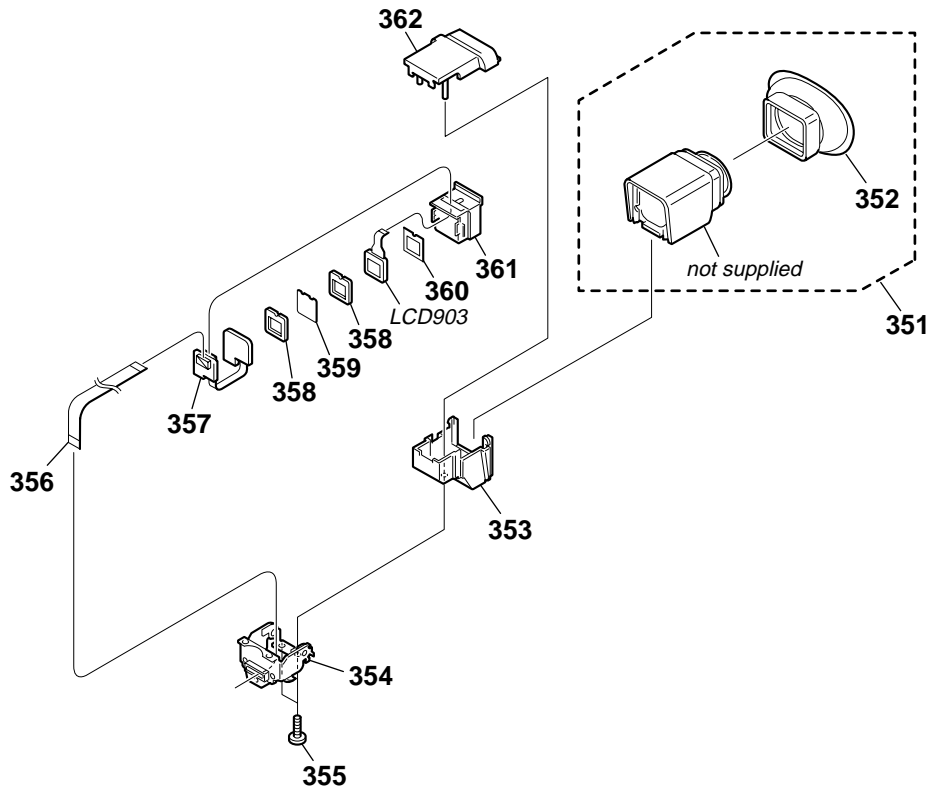
Ref. No.	Part No.	Description	Remarks	Ref. No.	Part No.	Description	Remarks
251	3-948-339-61	TAPPING		270	3-053-121-21	BOLT (M2), SPRING	
252	7-682-549-09	SCREW +B 3X10		271	X-3950-600-1	FRAME (D) ASSY, FK	
253	3-060-814-01	INSULATED PLATE, SW		272	A-7074-412-A	FK-076 BOARD, COMPLETE	
255	3-165-904-01	WASHER, SCREW STOPPER		* 273	3-062-543-01	CUSHION, MA FLEXIBLE	
256	3-688-755-11	SHOE, ACCESSORY		274	1-469-829-11	CORE, FERRITE (US)	
257	3-608-303-01	RUBBER		275	3-688-754-11	SPRING	
258	X-3950-604-1	HOLDER ASSY, MICROPHONE		276	1-678-051-11	FP-216 FLEXIBLE BOARD	
259	3-060-813-01	CABINET (R), HANDLE		277	A-7074-470-A	XM-001 BOARD, COMPLETE	
260	X-3950-602-1	COVER (D) ASSY, HANDLE		278	A-7074-469-A	XD-001 BOARD, COMPLETE	
261	3-053-121-41	BOLT (M2), SPRING		279	A-7074-468-A	XS-001 BOARD, COMPLETE	
262	3-053-121-11	BOLT (M2), SPRING		280	1-678-052-11	FP-217 FLEXIBLE BOARD	
263	A-7074-471-A	MA-386D BOARD, COMPLETE		281	1-678-053-11	FP-218 FLEXIBLE BOARD	
* 264	3-179-882-01	SPACER, MICROPHONE		282	3-061-062-01	BOLT (M2.6)	
265	3-048-481-01	SCREEN, WINDOW		* 283	3-678-684-01	HOLDER, CABLE	
* 266	3-060-815-01	BRACKET, DD		284	3-969-037-02	EMBLEM (NO.3), SONY	
267	1-678-049-11	FP-202 FLEXIBLE BOARD		285	X-3950-603-1	CABINET (L) ASSY, HANDLE	
268	X-3950-601-1	HANDLE (D) ASSY		MIC901	8-814-298-90	ECM-NV1	
269	3-060-786-11	CABINET (UPPER)					

6-1-7. BATTERY PANEL SECTION



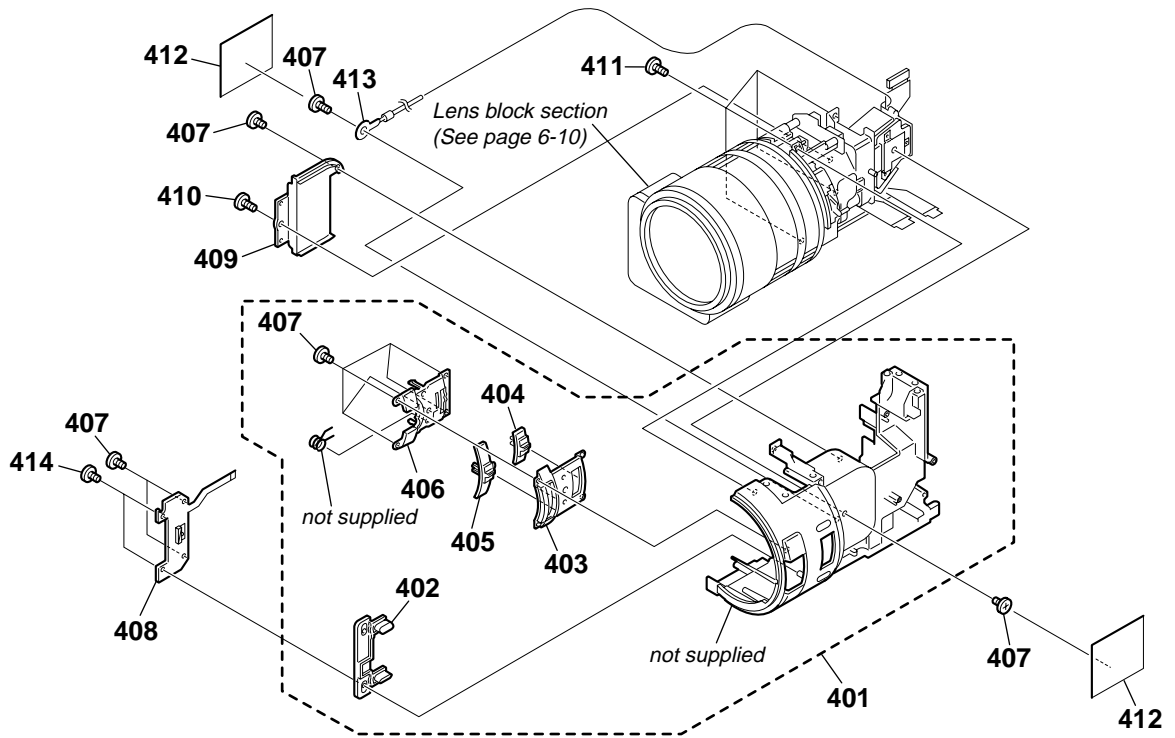
Ref. No.	Part No.	Description	Remarks	Ref. No.	Part No.	Description	Remarks
301	A-7074-408-A	MK-014 BOARD, COMPLETE		312	1-794-637-11	CONNECTOR, DC-IN	
* 302	3-060-678-01	RETAINER, MK		313	X-3950-593-1	PANEL (D) ASSY, BATTERY	
303	3-948-339-61	TAPPING		314	3-060-592-01	BRACKET (R), S BELT	
* 304	3-060-679-01	HOLDER, KP		315	3-060-595-01	CLAW, BT LOCK	
305	A-7074-406-A	KP-010 BOARD, COMPLETE		316	3-060-594-11	LEVER, BT RELEASE	
306	3-053-121-11	BOLT (M2), SPRING		317	3-053-121-41	BOLT (M2), SPRING	
307	1-678-058-11	FP-190 FLEXIBLE BOARD		* 318	3-060-774-01	JOINT, BT-R	
308	A-7074-407-A	MS-049 BOARD, COMPLETE		319	3-060-598-01	BUTTON, AL	
309	X-3950-589-1	HOLDER ASSY, MS		320	3-060-776-01	SHEET, AL	
310	1-694-411-11	TERMINAL BOARD, BATTERY		321	3-060-773-01	COVER, DC JACK	
* 311	3-060-680-01	RETAINER, DC JACK		322	1-469-829-11	CORE, FERRITE (US)	

6-1-8. EVF SECTION



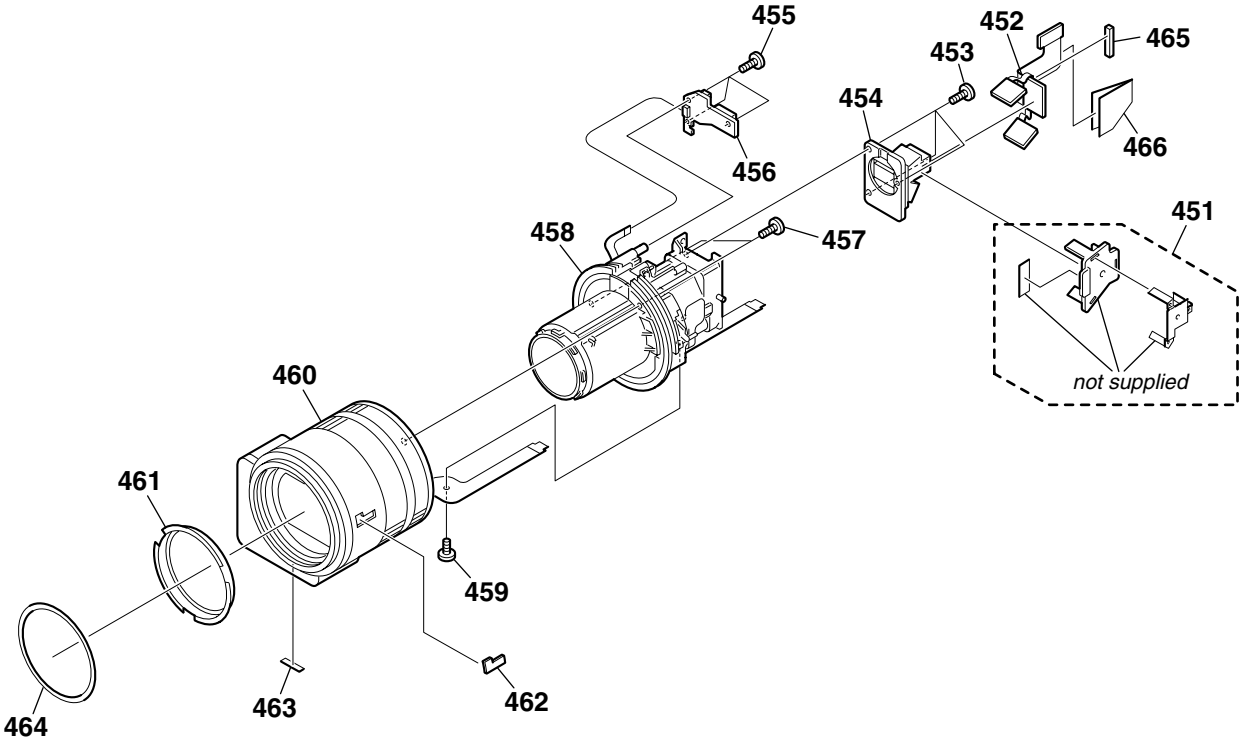
Ref. No.	Part No.	Description	Remarks	Ref. No.	Part No.	Description	Remarks
351	X-3950-563-1	CABINET ASSY, EVF REAR		358	3-060-702-01	CUSHION (498), LCD	
352	3-060-573-01	CUP, EYE		359	3-060-701-01	ILLUMINATOR (498)	
353	X-3950-564-1	CABINET (LOWER) ASSY, EVF FRONT		360	3-060-788-01	SHEET, LIGHT INTERCEPTION	
354	X-3950-565-1	HINGE ASSY, VF		361	X-3950-584-1	HOLDER ASSY, LCD	
355	3-713-791-21	SCREW (M1.7X8), TAPPING, P2		362	3-060-674-01	CABINET (UPPER), EVF FRONT	
356	1-678-060-11	FP-193 FLEXIBLE BOARD		LCD903	8-753-026-79	LCX033AL-J	
357	A-7074-467-A	LB-065D BOARD, COMPLETE					

6-1-9. CENTER FRAME SECTION



Ref. No.	Part No.	Description	Remarks	Ref. No.	Part No.	Description	Remarks
401	X-3950-594-1	FRAME (D) ASSY, CENTER		408	1-678-056-21	FP-188 FLEXIBLE BOARD	
402	3-060-620-01	BUTTON, IP		409	3-060-685-01	COVER, CCD	
403	3-060-621-11	ESCUTCHEON		410	3-948-339-61	TAPPING	
404	3-060-622-01	KNOB, MF		411	3-053-121-21	BOLT (M2), SPRING	
405	3-060-619-01	KNOB, ND		412	3-060-795-01	TAPE, HARNESS FIXED	
406	3-060-623-01	COVER, BUTTON		413	1-960-654-11	HARNESS, CJ-064	
407	3-053-121-11	BOLT (M2), SPRING		414	3-968-729-91	SCREW(M2), LOCK ACE, P2	

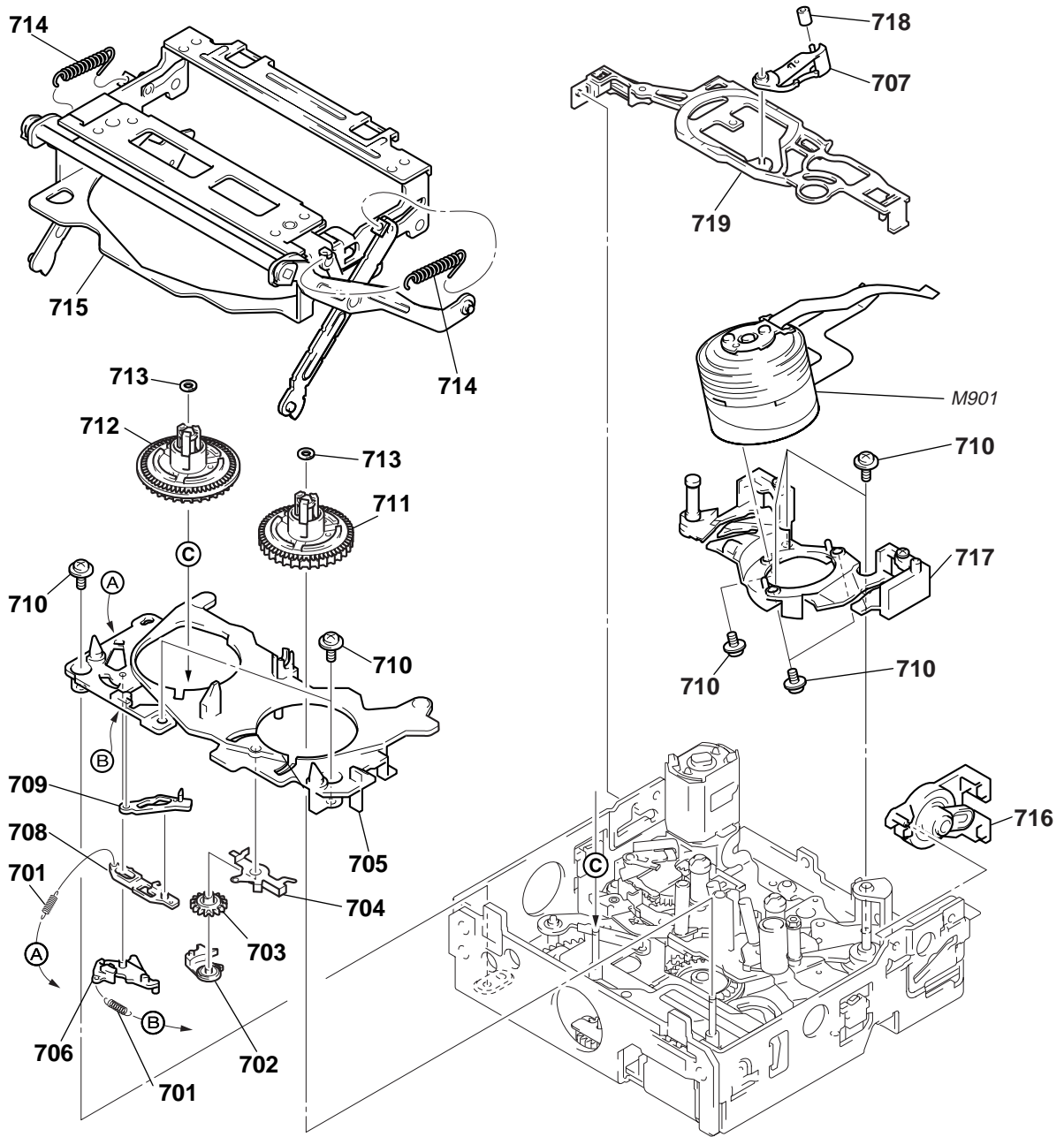
6-1-10. LENS BLOCK SECTION



Be sure to read "Precautions upon replacing CCD imager" on page 4-9 when changing the CCD imager.

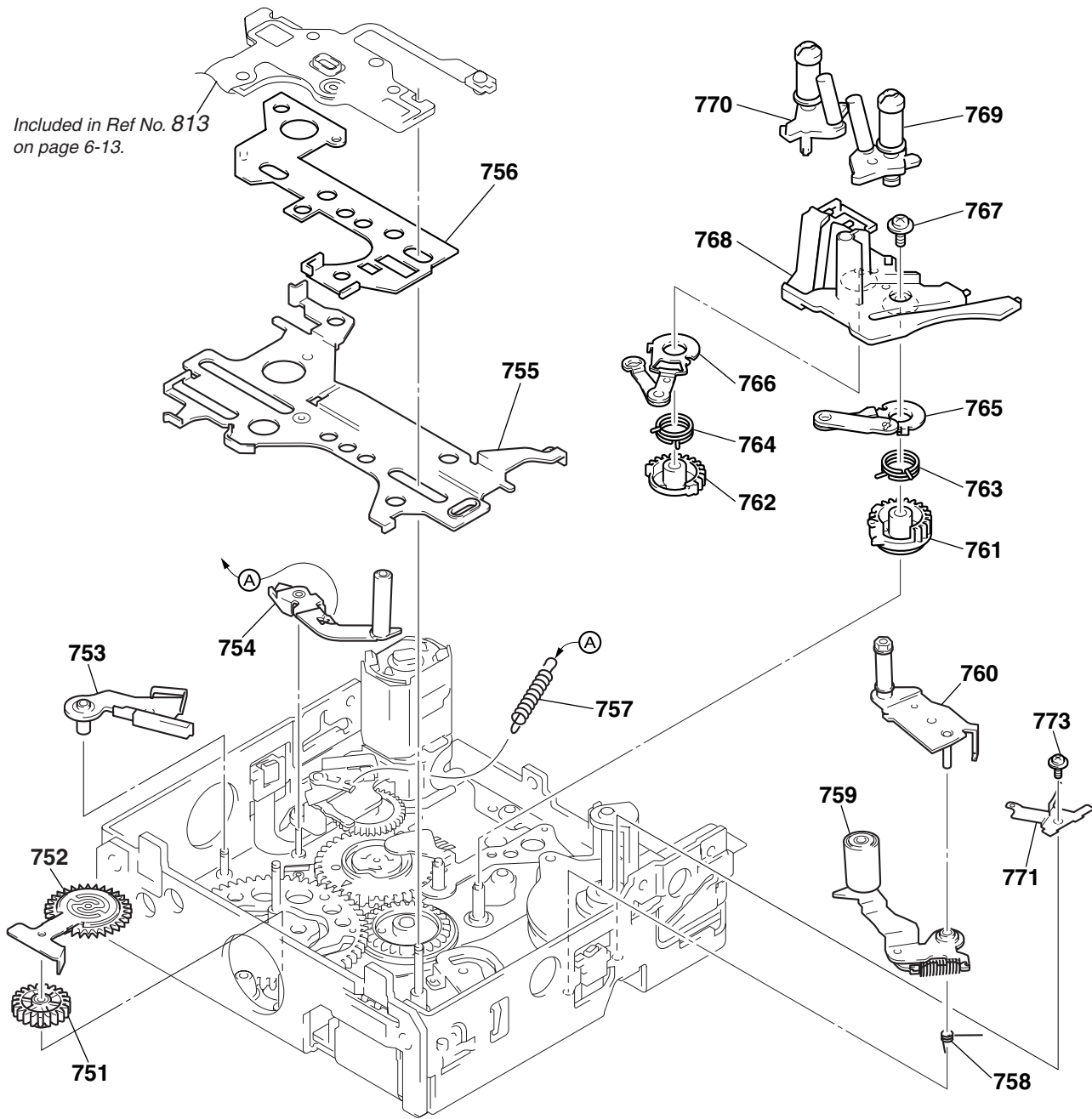
Ref. No.	Part No.	Description	Remarks	Ref. No.	Part No.	Description	Remarks
451	X-3950-586-1	COVER ASSY, PRISM		459	3-713-791-91	SCREW (M1.7)	
452	A-7074-398-A	CD-254 BOARD, COMPLETE		460	3-709-595-12	VAP ASSY (B114B)	
453	3-713-791-61	SCREW (M1.7X7), TAPPING, P2		461	3-709-594-01	RING ASSY, ORNAMENTAL	
454	A-7031-100-A	PRISM ASSY (SERVICE)(INCLUDE 3CCD)(US)		462	3-963-933-01	EMBLEM, CCD	
454	A-7031-101-A	PRISM ASSY (SERVICE)(INCLUDE 3CCD)(AEP)		463	3-062-454-01	FOOT (A), RUBBER	
455	3-948-339-61	TAPPING		464	3-060-681-01	RING, NAME	
456	A-7074-399-A	SE-108 BOARD, COMPLETE		* 465	3-053-354-01	CUSHION, CD FLEXIBLE	
457	3-948-339-31	SCREW, TAPPING P2		* 466	3-062-778-01	SHEET (CD)	
458	3-709-596-01	LENS ASSY, ZOOM					

6-1-11. CASSETTE COMPARTMENT, DRUM AND REEL TABLE ASSEMBLY



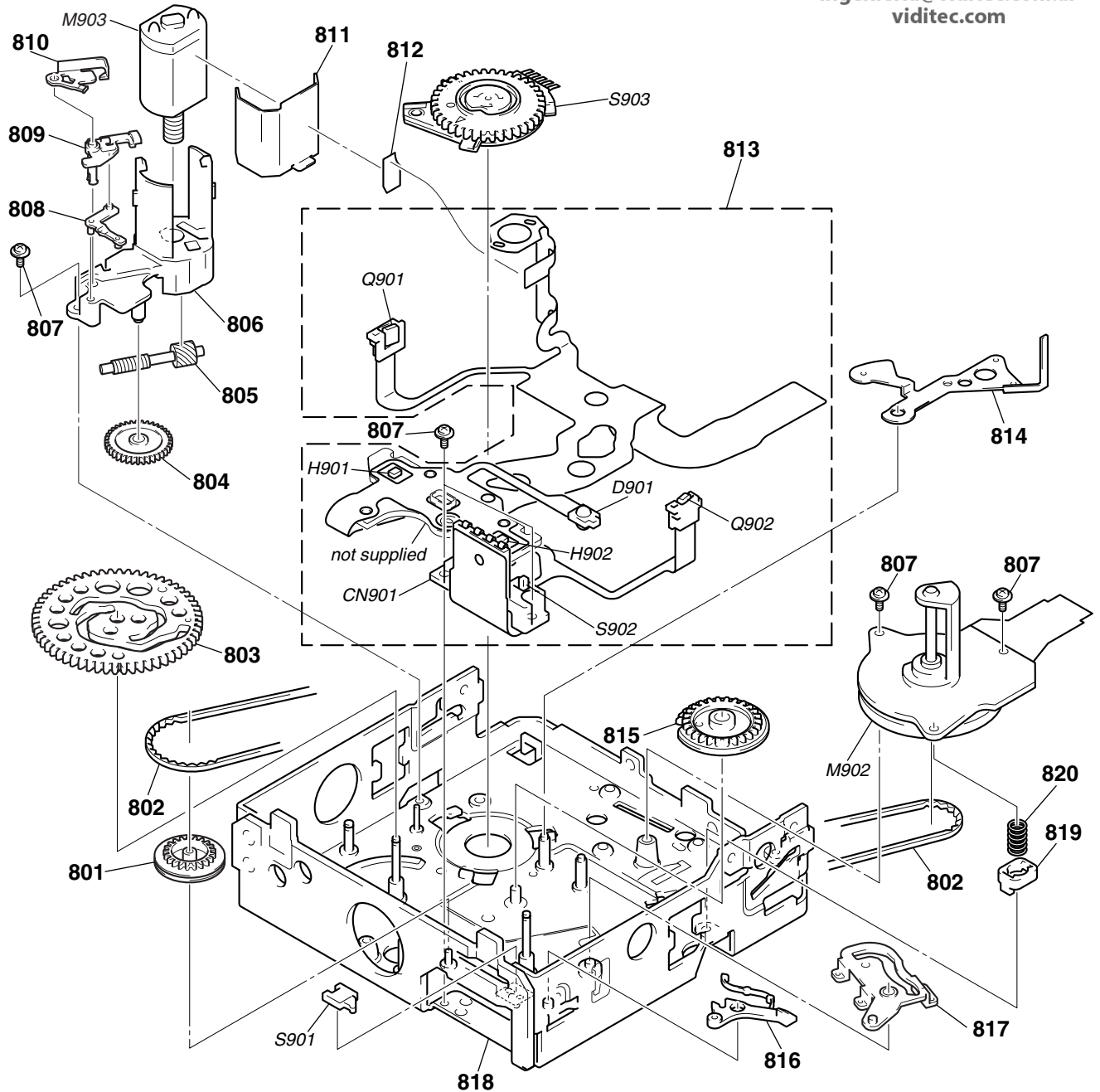
Ref. No.	Part No.	Description	Remarks	Ref. No.	Part No.	Description	Remarks
701	3-988-312-01	SPRING, EXTENSION		711	X-3948-445-1	TABLE (T) ASSY, REEL	
702	3-988-220-01	BRAKE (T)		712	X-3948-444-1	TABLE (S) ASSY, REEL	
703	3-988-221-01	GEAR (T), BRAKE		713	3-989-465-01	WASHER, STOPPER	
704	3-988-222-01	SPRING (T), BRAKE		714	3-988-298-01	SPRING EXTENSION	
705	3-988-215-02	BASE, CASSETTE		715	X-3948-441-9	CASSETTE COMPARTMENT ASSY	
706	3-988-217-01	ARM (S), RESET		716	X-3948-443-2	DAMPER ASSY	
707	3-988-281-02	ARM, HC		717	A-7093-612-A	DRUM BASE BLOCK ASSY	
708	3-988-219-01	RACK (S), BRAKE		718	3-988-282-01	ROLLER, HC	
709	3-988-218-01	BRAKE (S)		719	3-988-283-01	STOPPER, TAPE FALL	
710	3-947-503-01	SCREW (M1.4)		M901	A-4900-081-A	DRUM ASSY (DEH-14B/J-RP)	

6-1-12. TAPE GUIDE, PINCH SLIDER ASSEMBLY AND BRAKE SLIDER ASSEMBLY



Ref. No.	Part No.	Description	Remarks	Ref. No.	Part No.	Description	Remarks
751	3-988-263-01	GEAR, RELAY		762	3-988-252-02	GEAR (S), GL	
752	X-3948-442-2	GEAR ASSY, GOOSENECK		763	3-988-258-01	SPRING (GLT), TORSION	
753	X-3948-435-2	PLATE ASSY, TG1 ADJUSTMENT		764	3-988-253-01	SPRING (GLS), TORSION	
754	X-3948-434-1	ARM ASSY, TG1		765	X-3948-440-1	ARM (T) ASSY, GL	
755	X-3948-428-2	SLIDER ASSY, PINCH		766	X-3948-439-2	ARM (S) ASSY, GL	
756	X-3948-766-1	SLIDER ASSY, BRAKE		767	3-947-503-01	SCREW (M1.4)	
757	3-988-270-01	SPRING (TG1), TENSION COIL		768	3-988-242-01	RAIL, GUIDE	
758	3-988-233-01	SPRING (TG7LD), TORSION		769	X-3948-438-3	COASTER (T) ASSY	
759	X-3948-433-2	ARM ASSY, PINCH		770	X-3948-934-4	COASTER (S2) ASSY	
760	A-7093-501-A	ARM BLOCK ASSY, TG7		771	3-988-690-02	SPRING, TG7 RETAINER	
761	3-988-257-01	GEAR (T), GL		773	3-053-083-01	SCREW	

6-1-13. EACH GEARS AND LOADING/CAPSTAN MOTOR ASSEMBLY



Ref. No.	Part No.	Description	Remarks	Ref. No.	Part No.	Description	Remarks
801	3-988-274-01	PULLEY, CONVERSION		817	3-988-224-01	ARM, PINCH PRESS	
802	3-988-276-02	BELT, TIMING		818	X-3948-431-2	CHASSIS ASSY	
803	3-988-216-01	GEAR, CAM		819	3-050-170-01	HOLDER	
804	3-988-211-01	GEAR, DECELERATION		820	3-051-787-02	SPRING (CAP), COMPRESSION COIL	
805	3-988-210-01	SHAFT, WORM		CN901	1-784-723-11	PIN, CONNECTOR 4P	
806	3-988-207-01	HOLDER, MOTOR		D901	8-719-067-13	DIODE GL453K	
807	3-947-503-01	SCREW (M1.4)		H901	8-719-061-28	DIODE HW-105C-FT-V (S REEL)	
808	3-988-303-01	ARM, SPRING HOOK DRIVING		H902	8-719-061-28	DIODE HW-105C-FT-V (T REEL)	
809	3-988-271-01	BASE, SPRING HOOK FULCRUM		M902	8-835-606-01	MOTOR, DC SCD15A/C-NP (CAPSTAN)	
810	3-988-302-01	HOOK, TG1 SPRING		M903	X-3948-346-1	MOTOR ASSY, LOADING	
811	3-988-208-01	SHIELD, MOTOR		Q901	8-729-907-25	PHOTO TRANSISTOR PT4850F (TAPE END)	
812	1-657-785-11	FP-248 FLEXIBLE BOARD (DEW SENSOR)		Q902	8-729-907-25	PHOTO TRANSISTOR PT4850F (TAPE TOP)	
813	A-7073-418-A	FP-594 FLEXIBLE BOARD, COMPLETE		S901	1-771-039-51	SWITCH, PUSH (CASSETTE IN)	
814	3-988-280-03	ARM, HC DRIVING		S902	1-572-719-32	SWITCH, PUSH (1 KEY) (REC PROOF)	
815	3-988-239-01	GEAR, GL DRIVING		S903	1-771-325-11	ENCODER, ROTARY (SWITCH) (MODE)	
816	3-988-223-01	ARM, EJECT					