

SONY®

HD ELECTRONIC VIEWFINDER

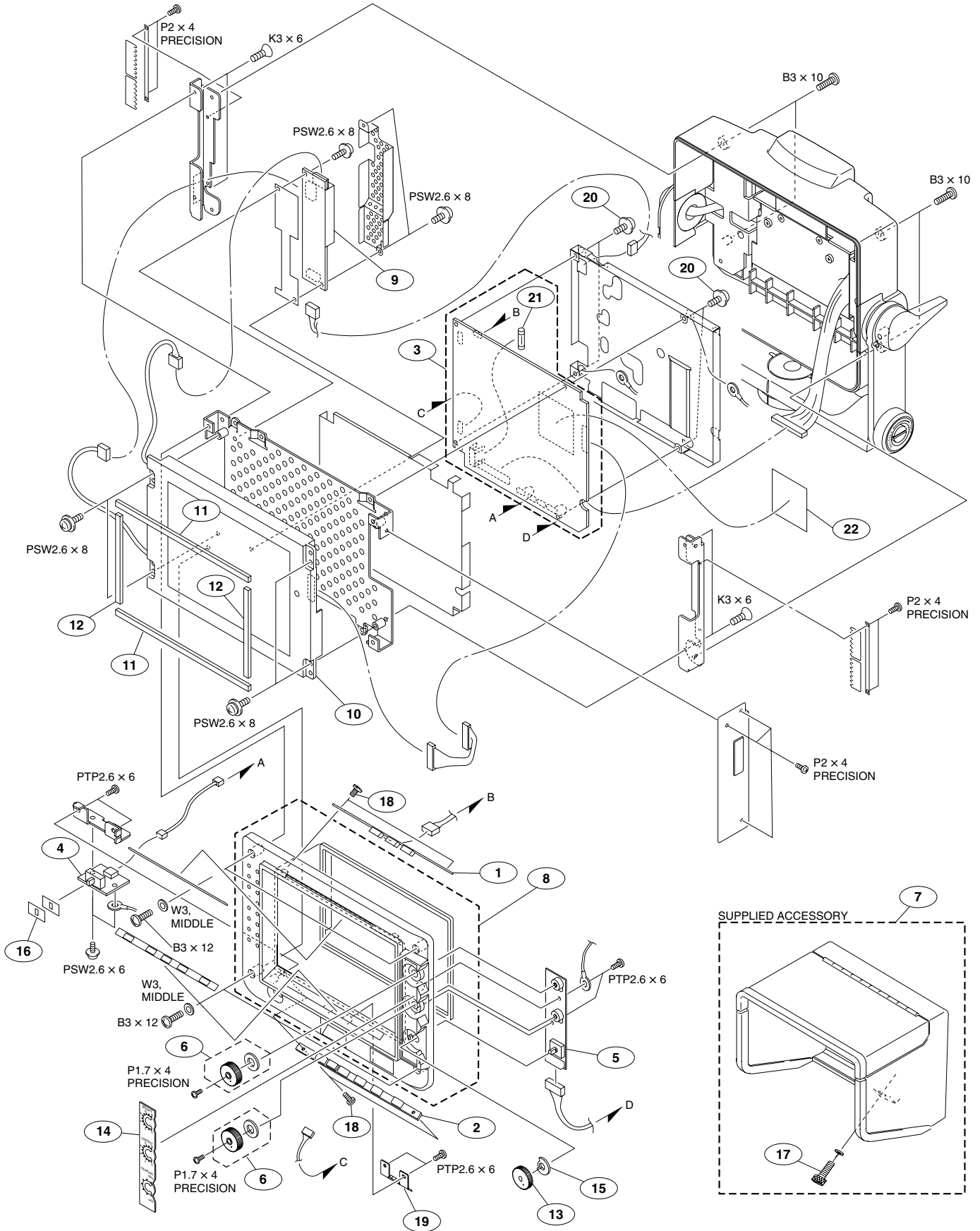
HDVF-C730W

MAINTENANCE MANUAL

1st Edition

Serial No. 10001 and Higher

3-2. Exploded Views

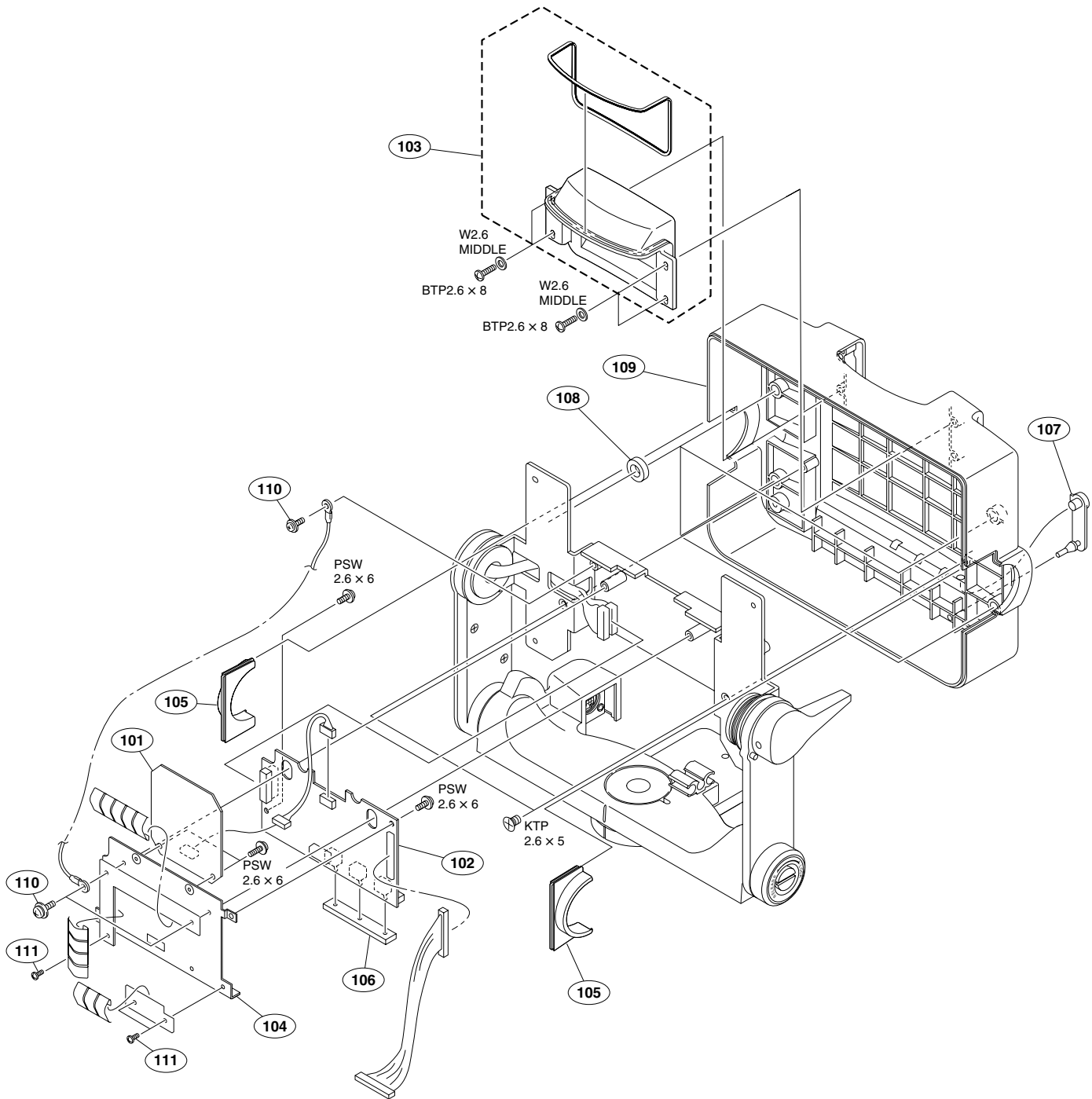


No.	Part No.	SP Description
1	A-1159-135-A	s MOUNTED CIRCUIT BOARD, LE-328
2	A-1159-136-A	s MOUNTED CIRCUIT BOARD, LE-329
3	A-1176-502-A	s MOUNTED CIRCUIT BOARD, PR-296
4	A-1176-503-A	s MOUNTED CIRCUIT BOARD, SW-1311
5	A-1159-137-A	s MOUNTED CIRCUIT BOARD, VR-317
6	X-3605-936-1	o ASSY,BRIGHT KNOB
7	X-3166-281-7	s HOOD ASSY, INDOOR
8	X-3704-819-1	s ASSY,BEZEL(N)
9	△ 1-477-607-11	s INVERTER UNIT (LCD MODULE)
10	△ 1-802-042-11	s LCD MODULE
11	2-674-843-01	s CUSHION-UPPER/LOWER
12	2-674-843-11	s CUSHION-RIGHT/LEFT
13	3-625-364-01	o KNOB, PEAKING
14	3-625-394-03	s COVER, SW
15	3-626-825-01	o SHEET,DROP PROTECTION
16	3-717-394-21	s PLATE (SMALL), ORNAMENTAL, SW
17	3-680-616-15	s SCREW (M4), BINDING
18	3-729-076-11	s SCREW (+B) (2X4)
19	3-869-871-01	s NUT, HOOD N
20	4-382-854-01	s SCREW (M3X8), P, SW (+)
21	△ 1-576-231-51	s FUSE (H.B.C.) (4A/250V)
22	3-623-693-02	o SHEET(F),HEAT CONDUCTION

7-621-759-45 s +PSW, 2.6X6
7-621-759-65 s +PSW, 2.6X8
7-627-552-48 s SCREW,PRECISION +P 1.7X4
7-627-553-47 s SCREW,PRECISION +P 2X4
7-682-247-04 s SCREW +K 3X6

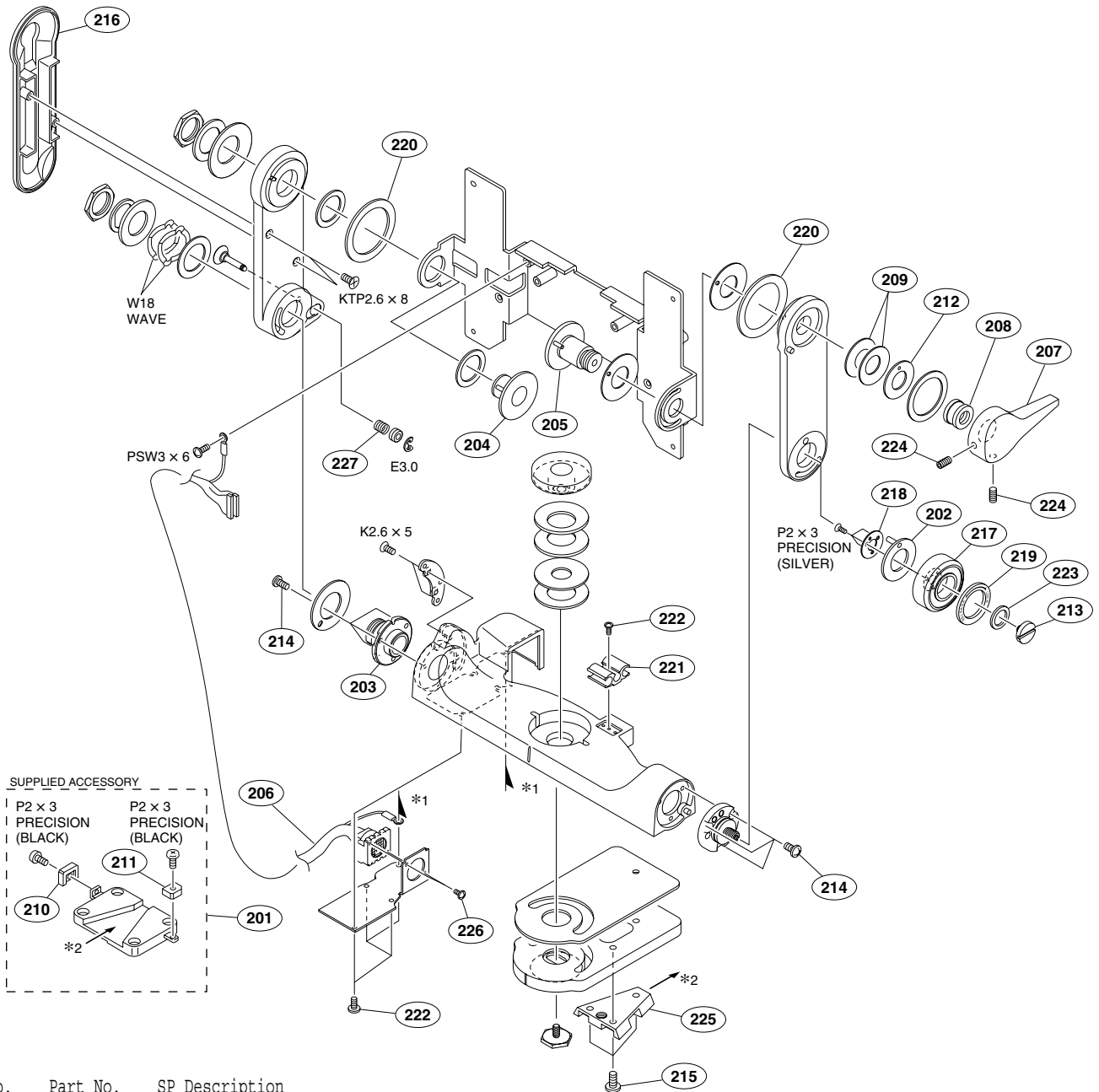
7-682-549-09 s SCREW +B 3X10
7-682-550-09 s SCREW +B 3X12
7-685-133-11 s SCREW +PTP 2.6X6 TYPE2
7-688-003-12 s W 3, MIDDLE

Rear Block



No.	Part No.	SP Description
101	A-1159-134-A	s MOUNTED CIRCUIT BOARD, LE-327
102	A-1159-133-A	s MOUNTED CIRCUIT BOARD, CN-2870
103	X-3605-938-2	s ASSY,TALLY COVER
104	X-2148-097-1	s PLATE ASSY,CONNECTOR
105	3-625-360-02	o COVER, SHAFT
106	3-626-817-02	s CUSHION,DROP PROTECTION
107	3-626-822-02	o PLUG,DROP PROTECTION
108	3-626-876-02	s CUSHION(HANDLE) ,DROP PROTECTION

No.	Part No.	SP Description
109	3-869-880-01	s COVER,REAR (N)
110	4-382-854-01	s SCREW (M3X8), P, SW (+)
111	9-885-104-55	s SCREW+FLH 2.6X5
	7-621-759-45	s +PSW, 2.6X6
	7-685-232-19	s SCREW +KTP 2.6X5 TYPE2NON-SLIT
	7-685-534-14	s SCREW +BTP 2.6X8 TYPE2 N-S
	7-688-002-11	s W 2.6, MIDDLE



No.	Part No.	SP Description
201	A-7612-405-B	s SHOE ASSY, V EDGE
202	X-3605-892-2	s PLATE ASSY, PIN
203	X-3605-893-1	o SHAFT (LEFT) ASSY, ARM
204	X-3605-894-3	o SHAFT (LEFT) ASSY, TILT
205	X-3605-895-3	o SHAFT (RIGHT) ASSY, TILT
206	1-963-786-11	s SUB HARNESS (VF CONNECTION HARNESS)
207	3-167-481-02	o TILT LOCK LEVER
208	3-167-482-11	o SCREW, LOCK, TILT
209	3-167-487-01	o SPRING, PLATE
210	3-167-513-01	o KNOB, RELEASE LEVER
211	3-167-514-01	o KNOB, STOPPER
212	3-169-580-02	s WASHER, THRUST
213	3-173-371-02	s SCREW, PUNCHING STOPPER
214	3-364-941-22	s SCREW (+B) (2.6X5), NYLOK
215	3-604-479-02	s ALOCK +B4X8
216	3-625-369-03	o COVER (L), ARM
217	3-625-379-01	s KNOB, ARM LOCKING
218	3-625-381-02	s RETAINER, PIN PLATE
219	3-625-384-01	o LABEL, LOCKING KNOB
220	3-626-824-01	o SPACER, DROP PROTECTION

No.	Part No.	SP Description
221	3-679-659-05	s CLAMP, CABLE
222	3-694-181-03	s TYPE1, AROCK PRECISION +P2.6X5
223	3-701-447-21	s WASHER, 10
224	3-701-512-01	s SET SCREW, DOUBLE POINT, (M4X8)
225	3-716-391-02	o WEDGE, MOUNTING
226	3-719-381-12	s SCREW (M2X5)
227	3-951-828-01	s SPRING, COMPRESSION
	7-621-559-32	s SCREW +K 2.6X5
	7-623-710-97	s WASHER 18, WAVE TYPE
	7-624-106-04	s STOP RING 3.0, TYPE -E
	7-627-553-37	s SCREW, PRECISION +P 2X3 (SILVER)
	7-627-553-38	s SCREW, PRECISION +P 2X3 (BLACK)
	7-685-234-19	s SCREW +KTP 2.6X8 TYPE2NON-SLIT

3-3. Supplied Accessories

Ref. No. or Q'ty	Part No.	SP Description
1pc	A-7612-405-B	s SHOE ASSY, V EDGE
1pc	X-3166-281-7	s HOOD ASSY, INDOOR
1pc	1-830-631-11	s CORD, CONNECTION (VF)
1pc	3-991-539-01	s OPERATION MANUAL
1pc	4-027-937-03	s PLATE, NUMBER
4pcs	7-683-421-04	o BOLT, HEXAGON SOCKET 4X12
1pc	7-721-130-20	s WRENCH, L (3.0MM)

3-4. Optional fixture

Part No.	SP Description
J-7120-210-1	s SWITCH-TEST-BOARD