

HVR-V1J/V1U/V1N/V1E/V1P/V1C

RMT-831

SERVICE MANUAL

Ver. 1.0 2006.11

Revision History

How to use
Acrobat Reader



US Model
Canadian Model
AEP Model
E Model
Chinese Model
Japanese Model

N MECHANISM (MDX-N111)

Link

SPECIFICATIONS	BLOCK DIAGRAMS	REPAIR PARTS LIST
MODEL INFORMATION TABLE	FRAME SCHEMATIC DIAGRAMS	ADJUSTMENT
SERVICE NOTE	SCHEMATIC DIAGRAMS	INSTRUCTION MANUAL
DISASSEMBLY	PRINTED WIRING BOARDS	

The components identified by mark \triangle or dotted line with mark \triangle are critical for safety. Replace only with part number specified.


Les composants identifiés par une marque \triangle sont critiques pour la sécurité. Ne les remplacer que par une pièce portant le numéro spécifié.

Mini DV Digital Video Cassette

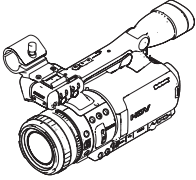
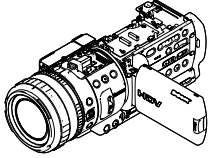
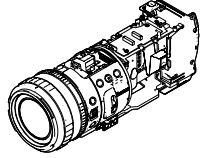
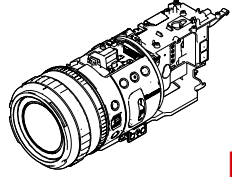
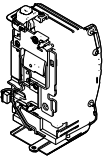
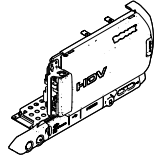
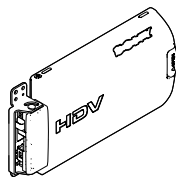
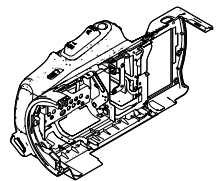
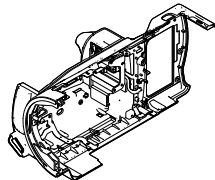
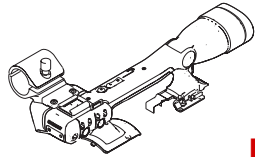
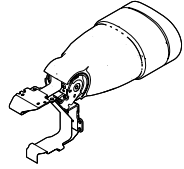
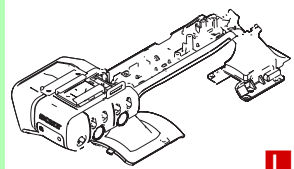
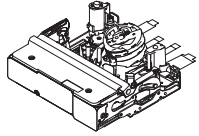
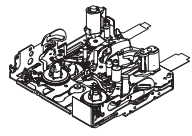
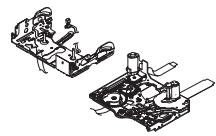
DIGITAL HD VIDEO CAMERA RECORDER

SONY®

5. REPAIR PARTS LIST (1/2)

TO (2/2) 

NOTE: Characters **A** to **Z** of the electrical parts list indicate location of exploded views in which the desired part is shown.

Link	EXPLODED VIEWS		
 A	 B	 C	 D
OVERALL SECTION-1	OVERALL SECTION-2	OVERALL SECTION-3	LENS SECTION
 E	 F	 G	 H
BT BLOCK	CABINET (R) SECTION	LCD PANEL BLOCK	CABINET (L) SECTION
 I	 J	 K	 L
CABINET (L) BLOCK	HANDLE SECTION	EVF BLOCK	HANDLE BLOCK
 M	 N	 O	
MECHANISM DECK SECTION	LS/MECHANICAL CHASSIS BLOCK ASSEMBLY-1	LS/MECHANICAL CHASSIS BLOCK ASSEMBLY-2	

NOTE

5. REPAIR PARTS LIST (2/2)

◀ T0 (1/2)

ELECTRICAL PARTS LIST

ACCESSORIES

• EE-006 BOARD D	• FP-487 FLEXIBLE BOARD G	• PP-003 BOARD G
• FP-031 FLEXIBLE BOARD O	• FP-488 FLEXIBLE BOARD L	• RR-003 BOARD F
• FP-032 FLEXIBLE BOARD O	• GG-003 BOARD J	• TT-003 BOARD C
• FP-228 FLEXIBLE BOARD O	• HH-003 BOARD F	• UU-003 BOARD K
• FP-483 FLEXIBLE BOARD J	• II-003 BOARD C	• WW-003 BOARD F
• FP-484 FLEXIBLE BOARD J	• JJ-004 BOARD D	• XX-015 BOARD L
• FP-485 FLEXIBLE BOARD H	• NN-003 BOARD B	• YY-003 BOARD C
• FP-486 FLEXIBLE BOARD F	• OO-003 BOARD C	• ZZ-003 BOARD L

5. REPAIR PARTS LIST

5. REPAIR PARTS LIST

(ENGLISH)

NOTE:

- -XX, -X mean standardized parts, so they may have some differences from the original one.
- Items marked “*” are not stocked since they are seldom required for routine service. Some delay should be anticipated when ordering these items.
- The mechanical parts with no reference number in the exploded views are not supplied.
- Due to standardization, replacements in the parts list may be different from the parts specified in the diagrams or the components used on the set.
- CAPACITORS:
uF: μ F
- COILS
uH: μ H
- RESISTORS
All resistors are in ohms.
METAL: metal-film resistor
METAL OXIDE: Metal Oxide-film resistor
F: nonflammable
- SEMICONDUCTORS
In each case, u: μ , for example:
uA...: μ A..., uPA..., μ PA...,
uPB..., μ PB..., uPC..., μ PC...,
uPD..., μ PD...

When indicating parts by reference number, please include the board name.

The components identified by mark \triangle or dotted line with mark \triangle are critical for safety. Replace only with part number specified.

Les composants identifiés par une marque \triangle sont critiques pour la sécurité. Ne les remplacer que par une pièce portant le numéro spécifié.

- Color Indication of Appearance Parts
Example:
(SILVER) : Cabinet's Color
(Silver) : Parts Color

(JAPANESE)

【使用上の注意】

- ここに記載されている部品は、補修用部品であるため、回路図及びセットに付いている部品と異なる場合があります。
- -XX, -Xは標準化部品のため、セットに付いている部品と異なる場合があります。
- *印の部品は常備在庫しておりません。
- コンデンサの単位でuFは μ Fを示します。
- 抵抗の単位 Ω は省略してあります。
金 被：金属被膜抵抗。
サンキン：酸化金属被膜抵抗。
- インダクタの単位でuHは μ Hを示します。
- 半導体の名称でuA..., uPA..., uPB..., uPC..., uPD...等はそれぞれ μ A..., μ PA..., μ PB..., μ PC..., μ PD...を示します。

お願い
図面番号で部品を指定するときは基板名又はブロックを併せて指定してください。

\triangle 印の部品、または \triangle 印付の点線で囲まれた部品は、安全性を維持するために、重要な部品です。従って交換時は、必ず指定の部品を使用してください。

- 外装部品色表示
例：
(SILVER):セットの色を表す。
(Silver) : 部品の色を表す。

- Abbreviation
AR : Argentine model
AUS : Australian model
BR : Brazilian model
CH : Chinese model
CND : Canadian model
EE : East European model
HK : Hong Kong model
J : Japanese model
JE : Tourist model
KR : Korea model
NE : North European model

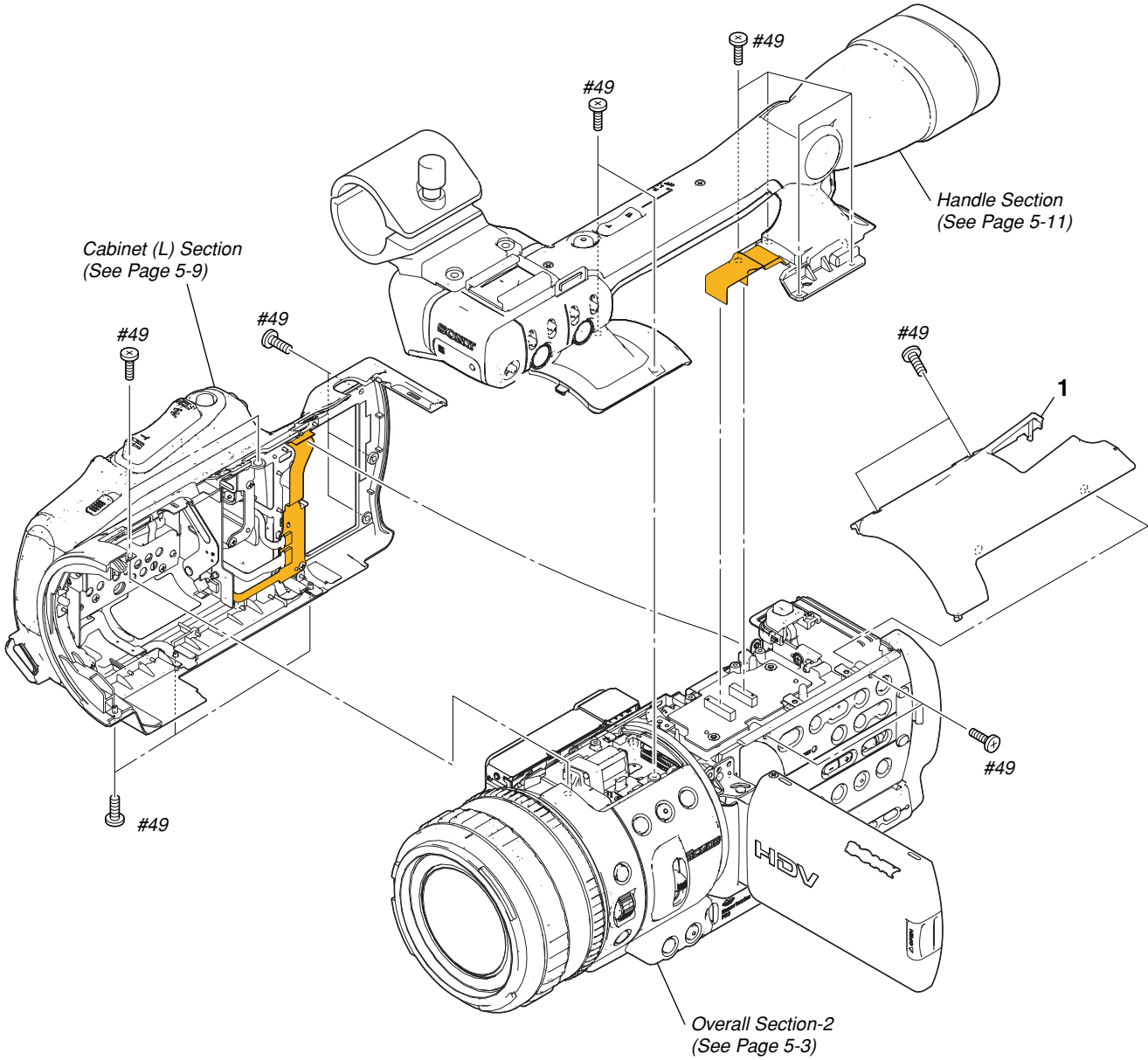
5. REPAIR PARTS LIST

DISASSEMBLY

HARDWARE LIST

5-1. EXPLODED VIEWS

5-1-1. OVERALL SECTION-1



Ref. No.	Part No.	Description
1	2-891-978-11	CABINET, TOP

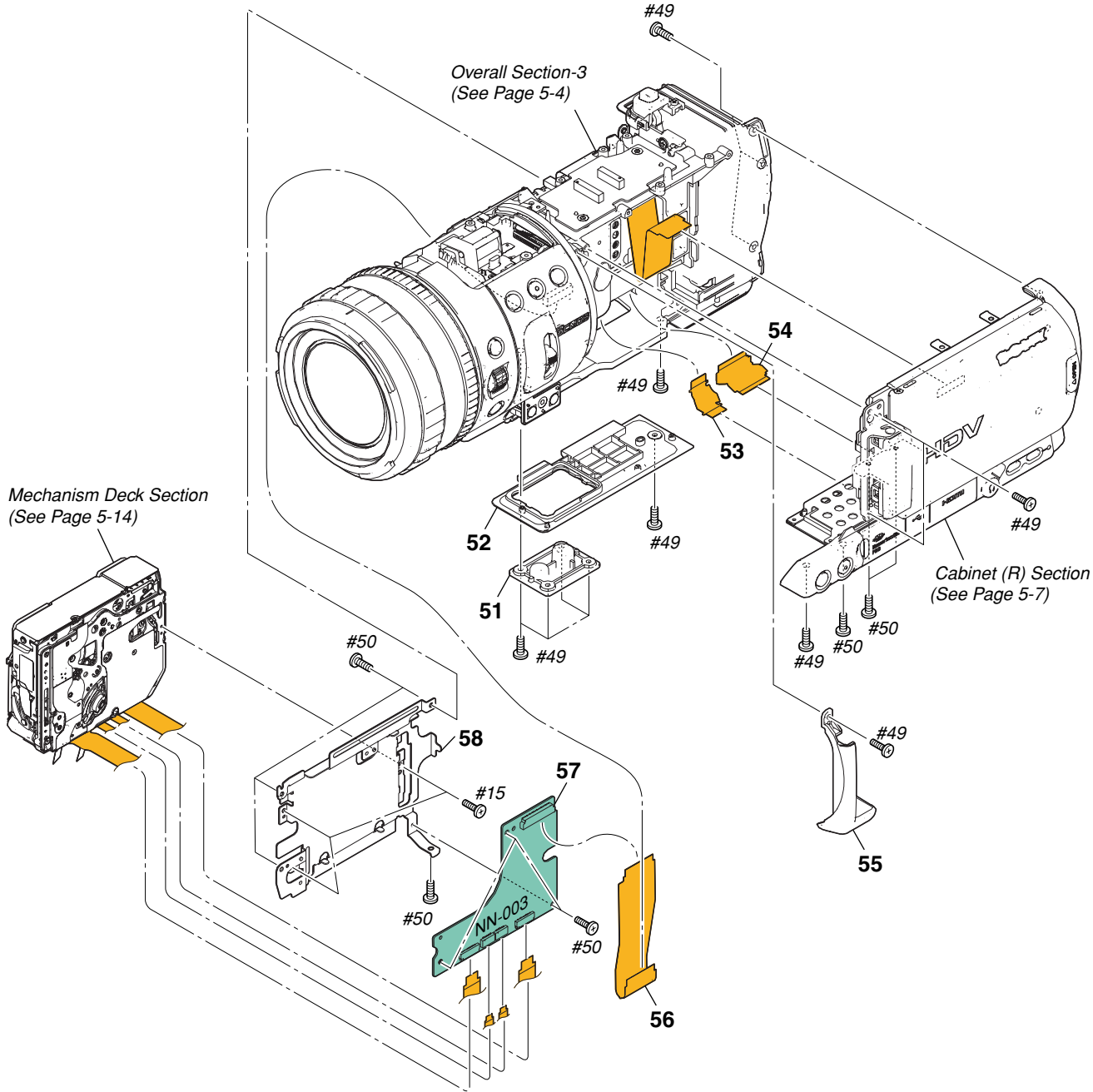
Ref. No.	Part No.	Description
#49	2-630-005-31	SCREW (M2), NEW TRUSTER, P2 (Black)

5. REPAIR PARTS LIST

DISASSEMBLY

HARDWARE LIST

5-1-2. OVERALL SECTION-2



Ref. No.	Part No.	Description
51	2-178-793-01	BRACKET (TRIPOD)
52	2-891-980-01	PLATE, BOTTOM
53	1-870-118-11	FP-496 FLEXIBLE BOARD
54	1-870-115-11	FP-493 FLEXIBLE BOARD
55	2-892-031-11	COVER (F), HINGE
56	1-870-113-11	FP-491 FLEXIBLE BOARD

Ref. No.	Part No.	Description
57	A-1217-221-A	NN-003 BOARD, COMPLETE
* 58	X-2149-998-1	FRAME ASSY, MD
#15	3-062-214-01	SCREW (M1.4X1.5) (Silver)
#49	2-630-005-31	SCREW (M2), NEW TRUSTER, P2 (Black)
#50	2-891-494-11	SCREW (M2), NEW TRUSTER, P2 (Red)

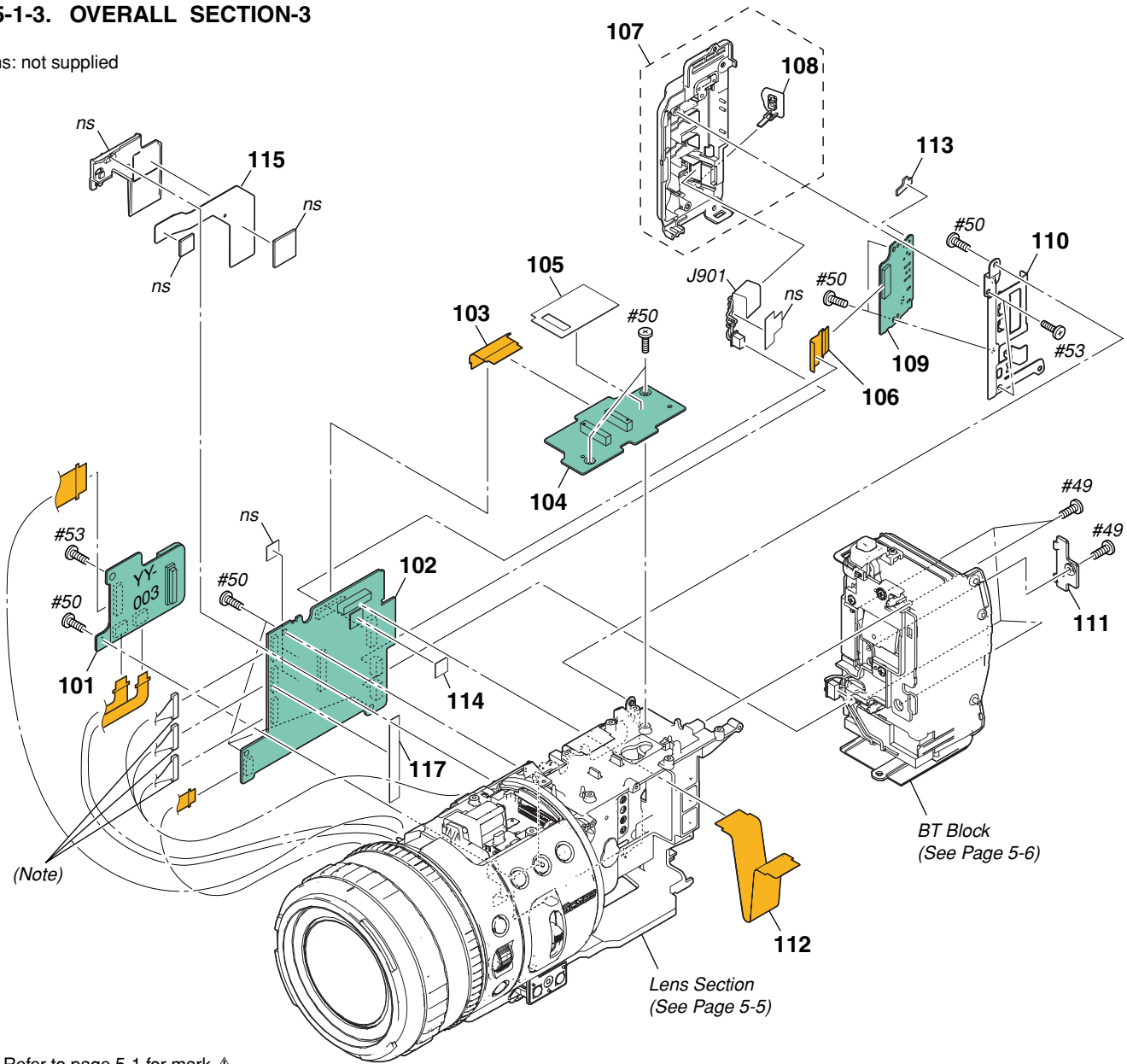
5. REPAIR PARTS LIST

DISASSEMBLY

HARDWARE LIST

5-1-3. OVERALL SECTION-3

ns: not supplied



• Refer to page 5-1 for mark △.

Note: ハーネス (coaxial cable) を抜く時は2-1ページの “Note for disconnecting the harness (coaxial cable)” を参照してください。

Note: Refer to page 2-1 “Note for disconnecting the harness (coaxial cable)” when changing the harness (coaxial cable).

Ref. No.	Part No.	Description
101	A-1217-225-A	YY-003 BOARD, COMPLETE
102	A-1217-722-A	TT-003 BOARD, COMPLETE (SERVICE) (NTSC: V1J/V1U/V1N)
102	A-1217-723-A	TT-003 BOARD, COMPLETE (SERVICE) (PAL: V1E/V1P/V1C)
103	1-870-114-11	FP-492 FLEXIBLE BOARD
104	A-1217-223-A	OO-003 BOARD, COMPLETE
* 105	2-896-054-01	SHEET (TP)
106	1-870-117-11	FP-495 FLEXIBLE BOARD
107	X-2149-995-1	CABINET (L) ASSY (D), JACK
108	2-891-959-01	DC, JACK LID
109	A-1217-208-A	II-003 BOARD, COMPLETE

Ref. No.	Part No.	Description
* 110	2-891-977-01	HOLDER, JACK PC BOARD (L)
111	2-891-982-01	LID, CPC
112	1-870-116-11	FP-494 FLEXIBLE BOARD
* 113	2-891-983-01	CUSHION, LIGHT INTERCEPTION
* 114	2-891-990-01	SPACER (DZ)
* 115	2-891-985-01	SHEET (GF)
* 117	2-899-567-01	SHEET (TT)
△ J901	1-815-005-11	CONNECTOR, DC-IN
#49	2-630-005-31	SCREW (M2), NEW TRUSTER, P2 (Black)
#50	2-891-494-11	SCREW (M2), NEW TRUSTER, P2 (Red)
#53	3-080-206-21	SCREW, TAPPING, P2 (Black)

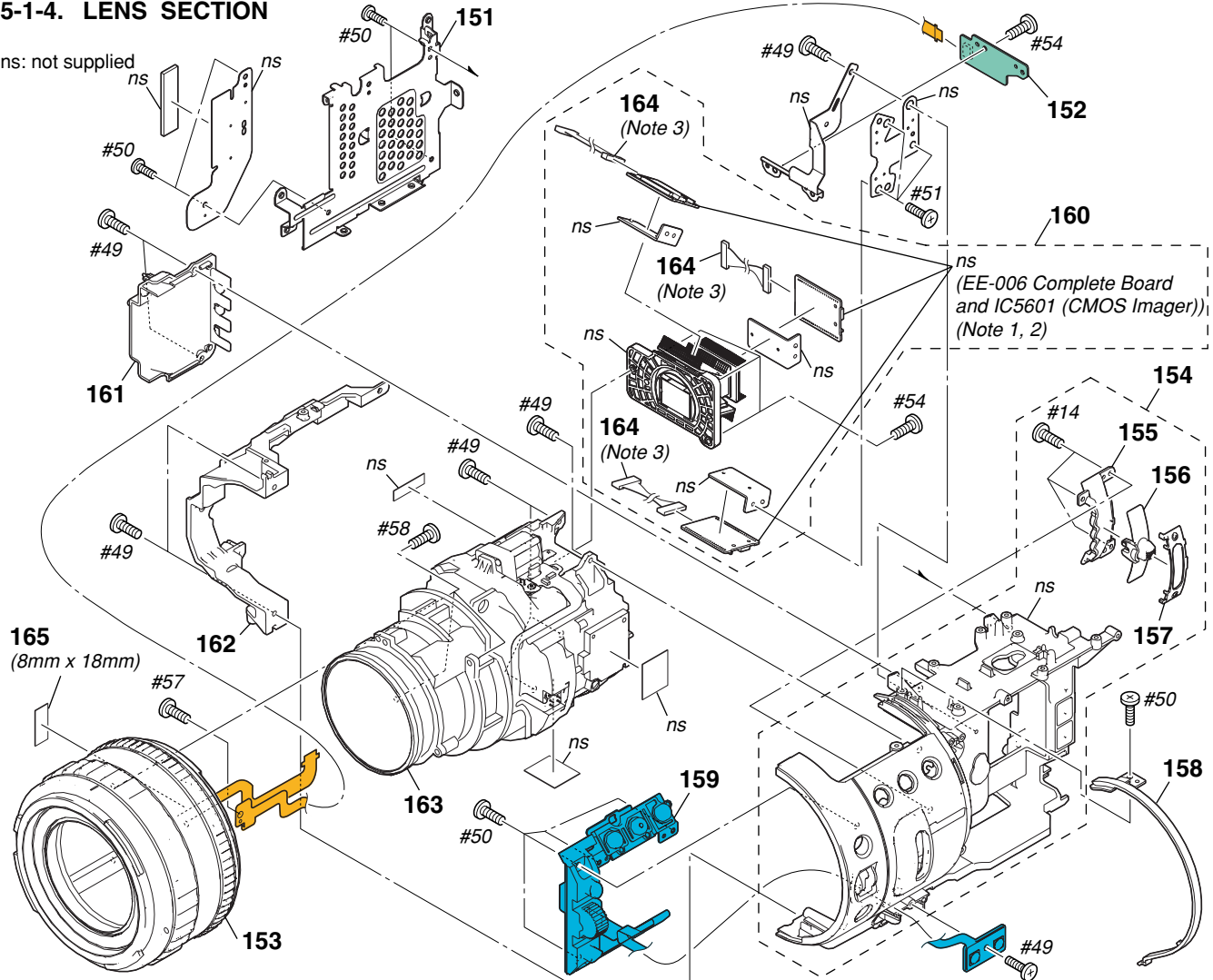
5. REPAIR PARTS LIST

DISASSEMBLY

HARDWARE LIST

5-1-4. LENS SECTION

ns: not supplied



CAUTION:
165番は、T0.25ヒメロン(3-076-631-01)を切って使用。

CAUTION:
For the part of 165, cut WOVEN (T0.25), FABRIC NON (3-076-631-01) into the desired length and use it.

Note 1: マウント済EE-006基板とIC5601は交換対象ではありませんが、プリズム組立に含まれます。

Note 1: EE-006 complete board and IC5601 are not supplied, but they are included in prism assy.

Note 2: イメージャの交換時は4 - 4 ページの“イメージャ交換時の注意”を必ずお読みください。

Note 2: Be sure to read “Precautions for Replacement of Imager” on page 4-3 when changing the imager.

Note 3: ハーネス (coaxial cable) を抜く時は2-1ページの“Note for disconnecting the harness (coaxial cable)”を参照してください。

Note 3: Refer to page 2-1 “Note for disconnecting the harness (coaxial cable)” when changing the harness (coaxial cable).

Ref. No.	Part No.	Description
* 151	X-2159-300-1	BRACKET (VC) ASSY
152	A-1227-577-A	JJ-004 BOARD, COMPLETE (SERVICE)
153	2-898-191-01	RING UNIT (B187B (SERVICE))
154	X-2149-993-1	CHASSIS ASSY (D), CENTER
* 155	2-891-955-01	RETAINER, ND KNOB
* 156	2-891-954-01	KNOB, ND
* 157	2-891-956-01	PLATE, ND CLICK
158	2-891-975-01	RING, ORNAMENTAL
159	1-479-812-11	SWITCH BLOCK, CONTROL (CK18500)
160	A-1223-596-A	PRISM ASSY (SERVICE) (Note 1, 2)
* 161	2-891-979-01	PLATE (CMOS), INTERCEPTION

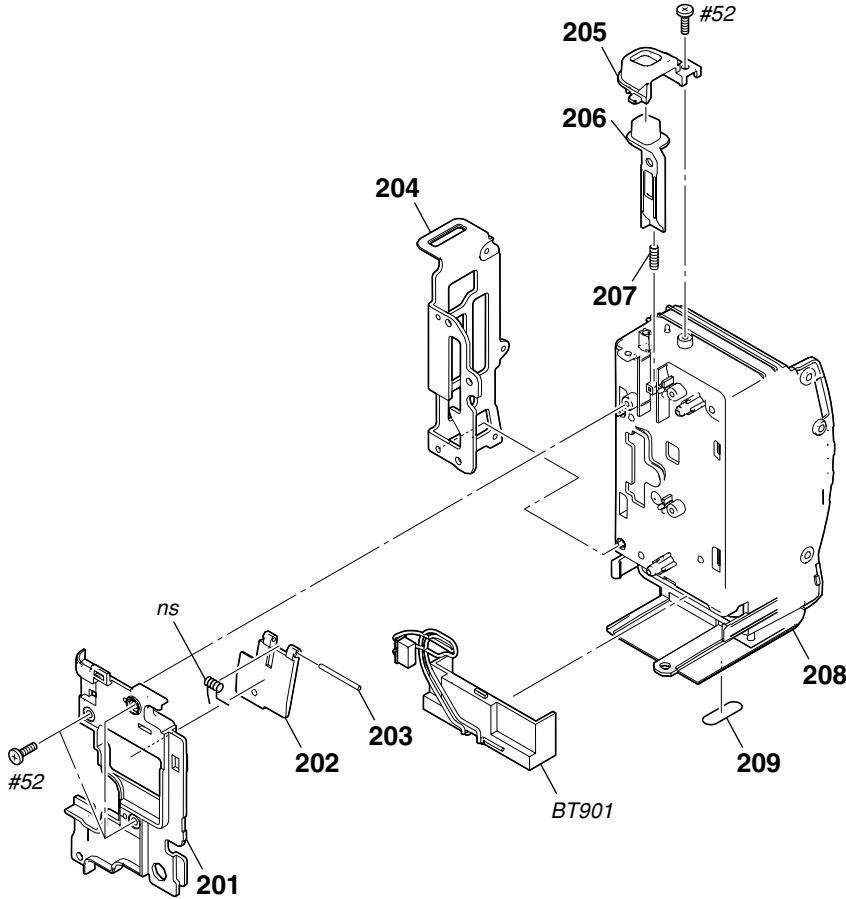
Ref. No.	Part No.	Description
* 162	X-2149-999-1	BRACKET (CL) ASSY
163	A-1227-243-A	UNIT ASSY (B187B (SERVICE))
164	1-963-577-41	HARNESS (COAXIAL CABLE) (Note 3)
165	CAUTION	WOVEN (T0.25), FABRIC NON
#14	2-599-475-11	SCREW (M1.7) (Silver)
#49	2-630-005-31	SCREW (M2), NEW TRUSTER, P2 (Black)
#50	2-891-494-11	SCREW (M2), NEW TRUSTER, P2 (Red)
#51	3-073-686-01	SCREW (M2X2.5) (Silver)
#54	3-318-203-11	SCREW, TAPPING, P2 (Black)
#57	7-627-852-18	SCREW, PRECISION +P 1.7X4 TYPE3 (Black)
#58	3-719-408-11	SCREW (B2), TAPPING, P3 (Silver)

5. REPAIR PARTS LIST

HARDWARE LIST

5-1-5. BT BLOCK

ns: not supplied



• Refer to page 5-1 for mark △.

Ref. No.	Part No.	Description	Ref. No.	Part No.	Description
201	2-891-969-01	COVER, BT LOCK	207	3-968-771-01	SPRING, COMPRESSION
202	3-060-595-01	CLAW, BT LOCK	208	2-891-966-01	PANEL, BATTERY
203	3-968-770-01	SHAFT, BT	209	2-178-805-01	FOOT, RUBBER
204	2-891-968-01	SHEET METAL (L), STRAP	△ BT901	1-694-411-31	TERMINAL BOARD, BATTERY
205	2-891-970-11	COVER, BT RELEASE	#52	3-080-206-11	SCREW, TAPPING, P2 (Black)
206	2-891-967-01	RELEASE (SW)			

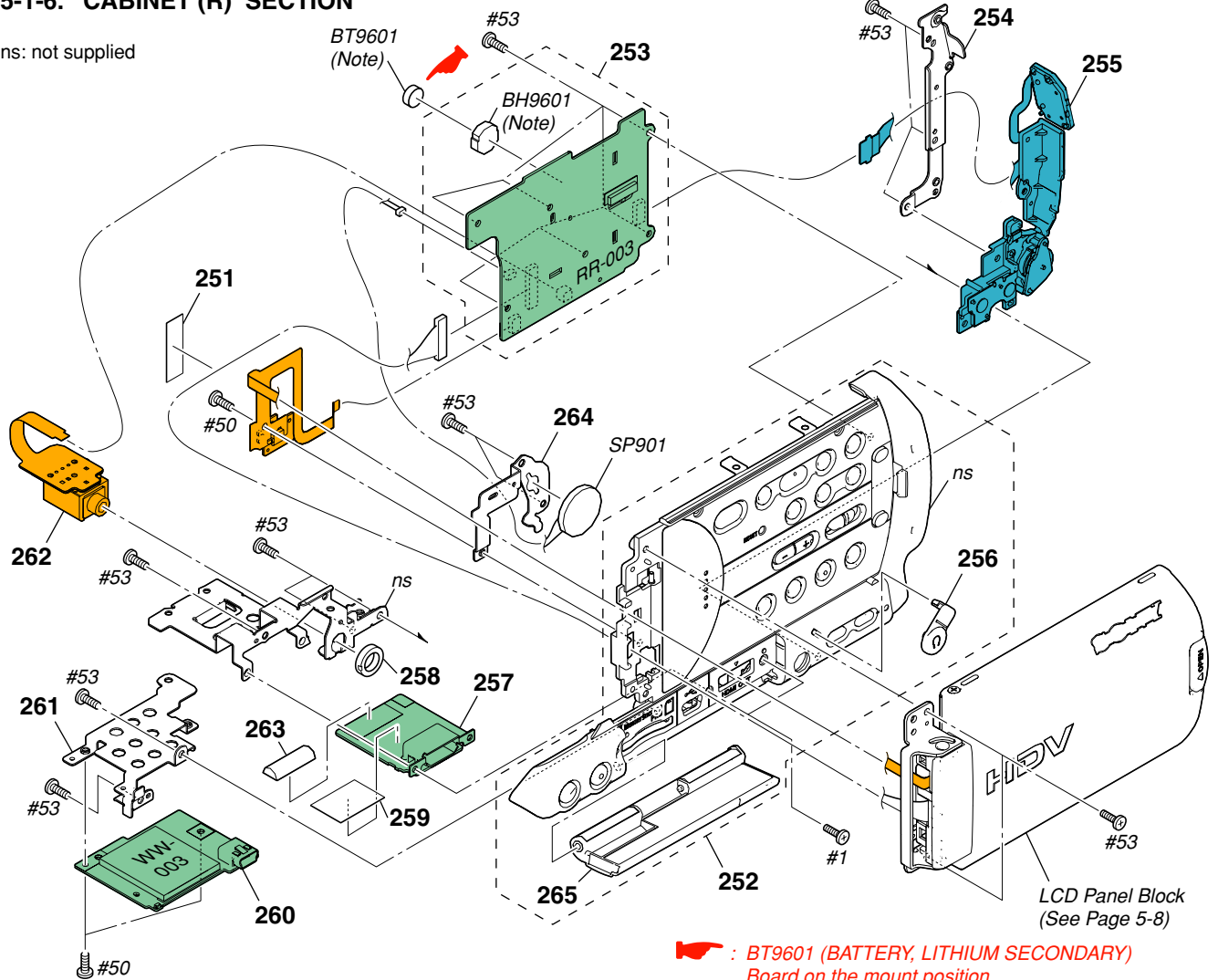
5. REPAIR PARTS LIST

DISASSEMBLY

HARDWARE LIST

5-1-6. CABINET (R) SECTION

ns: not supplied



: BT9601 (BATTERY, LITHIUM SECONDARY) Board on the mount position. (See page 4-56.)

Note: Replace the battery holder (BH9601) together when replacing the lithium battery (BT9601) on the RR-003 board. (The battery holder removed once cannot be used again.)
When mounting these parts, mount new battery holder first and attach new lithium battery next.

Note: RR-003 基板のリチウム電池 (BT9601) を交換する場合はバッテリーホルダ (BH9601) も同時に新品に交換して下さい。(一度使用したバッテリーホルダは再使用できません。) 部品取り付けの際は、先にバッテリーホルダを取り付けてからリチウム電池を装着して下さい。

CAUTION
Danger of explosion if battery is incorrectly replaced.
Replace only with the same or equivalent type.

注意
電池の交換は、正しく行わないと破裂する恐れがあります。電池を交換する場合には必ず同じ型名の電池又は同等品と交換してください。

• Refer to page 5-1 for mark ▲.

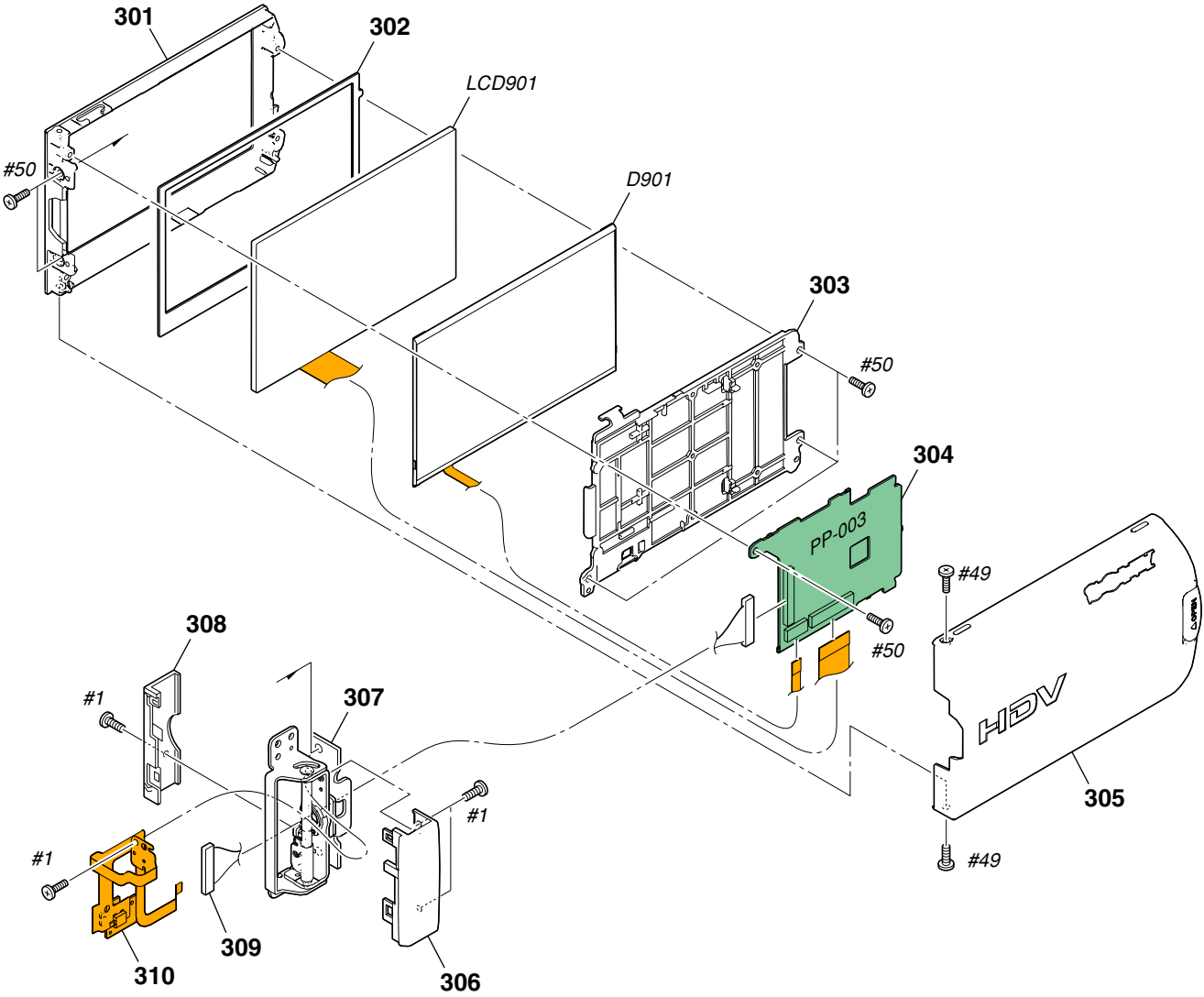
Ref. No.	Part No.	Description
251	3-941-343-01	TAPE (A)
252	X-2159-308-1	CABINET (R) ASSY (D)
253	A-1217-212-A	RR-003 BOARD, COMPLETE
* 254	2-892-033-01	PLATE, CF RETAINER
255	1-479-813-11	SWITCH BLOCK, CONTROL (CF18500)
256	2-892-026-01	LID, HEADPHONE
257	A-1217-219-A	HH-003 BOARD, COMPLETE
258	3-061-234-01	NUT (M6X0.5)
* 259	2-899-674-01	SHEET (HH), INSULATING
260	A-1217-214-A	WW-003 BOARD, COMPLETE
* 261	2-892-030-01	FRAME, JACK FIXED

Ref. No.	Part No.	Description
262	A-1217-231-A	FP-486 FLEXIBLE BOARD, COMPLETE
* 263	2-892-034-01	SHEET (HH)
* 264	X-2159-309-1	RETAINER ASSY, SP
265	X-2176-355-1	LID (R) ASSY, JACK
▲ BH9601	1-756-615-41	HOLDER, BATTERY (Note)
▲ BT9601	1-756-134-12	BATTERY, STORAGE, LITHIUM (Note)
SP901	1-825-260-23	LOUD SPEAKER (1.6CM)
#1	2-635-562-11	SCREW (M1.7) (Black)
#50	2-891-494-11	SCREW (M2), NEW TRUSTER, P2 (Red)
#53	3-080-206-21	SCREW, TAPPING, P2 (Black)

5. REPAIR PARTS LIST

HARDWARE LIST

5-1-7. LCD PANEL BLOCK



Ref. No.	Part No.	Description
301	2-892-044-11	CABINET (L), PANEL
* 302	2-892-045-01	CUSHION, LCD
303	X-2159-313-1	FRAME ASSY, PANEL
304	A-1217-211-A	PP-003 BOARD, COMPLETE
305	X-2159-312-1	CABINET (R) ASSY (D), PANEL
306	2-892-046-11	COVER (R), HINGE
307	X-2159-310-1	HINGE ASSY
308	3-090-382-21	COVER (REAR), HINGE

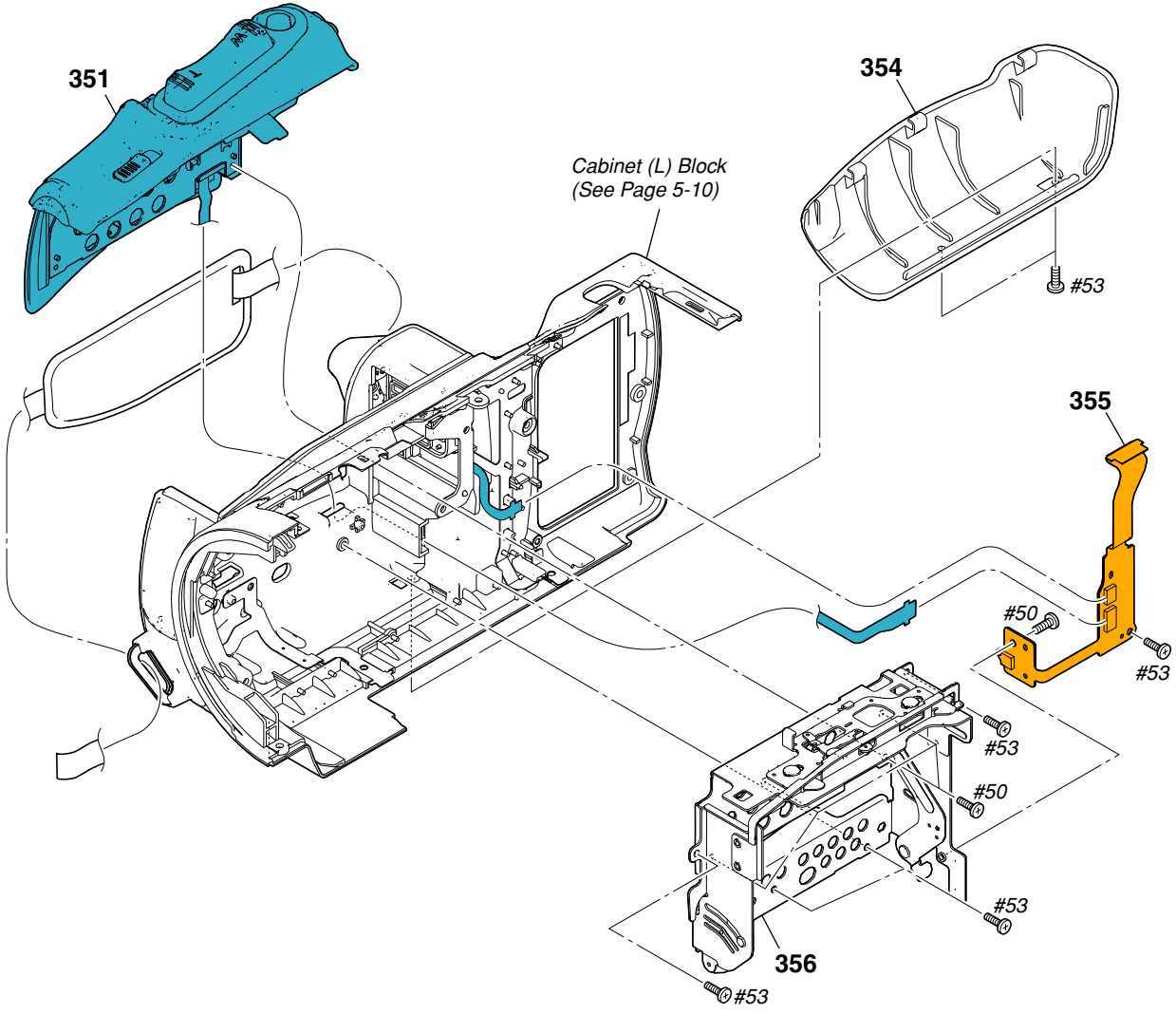
Ref. No.	Part No.	Description
309	1-964-790-11	HARNESS (PR-074)
310	A-1217-232-A	FP-487 FLEXIBLE BOARD, COMPLETE
D901	1-479-622-11	BLOCK, LIGHT GUIDE PLATE (3.5)
LCD901	8-753-270-54	ACX545AKA-1
#1	2-635-562-11	SCREW (M1.7) (Black)
#49	2-630-005-31	SCREW (M2), NEW TRUSTER, P2 (Black)
#50	2-891-494-11	SCREW (M2), NEW TRUSTER, P2 (Red)

5. REPAIR PARTS LIST

DISASSEMBLY

HARDWARE LIST

5-1-8. CABINET (L) SECTION



Ref. No.	Part No.	Description
351	1-479-814-21	SWITCH BLOCK, CONTROL (PL18500)
354	2-891-976-01	COVER, GRIP
355	A-1217-230-A	FP-485 FLEXIBLE BOARD, COMPLETE
* 356	X-2159-301-1	FRAME ASSY, CS

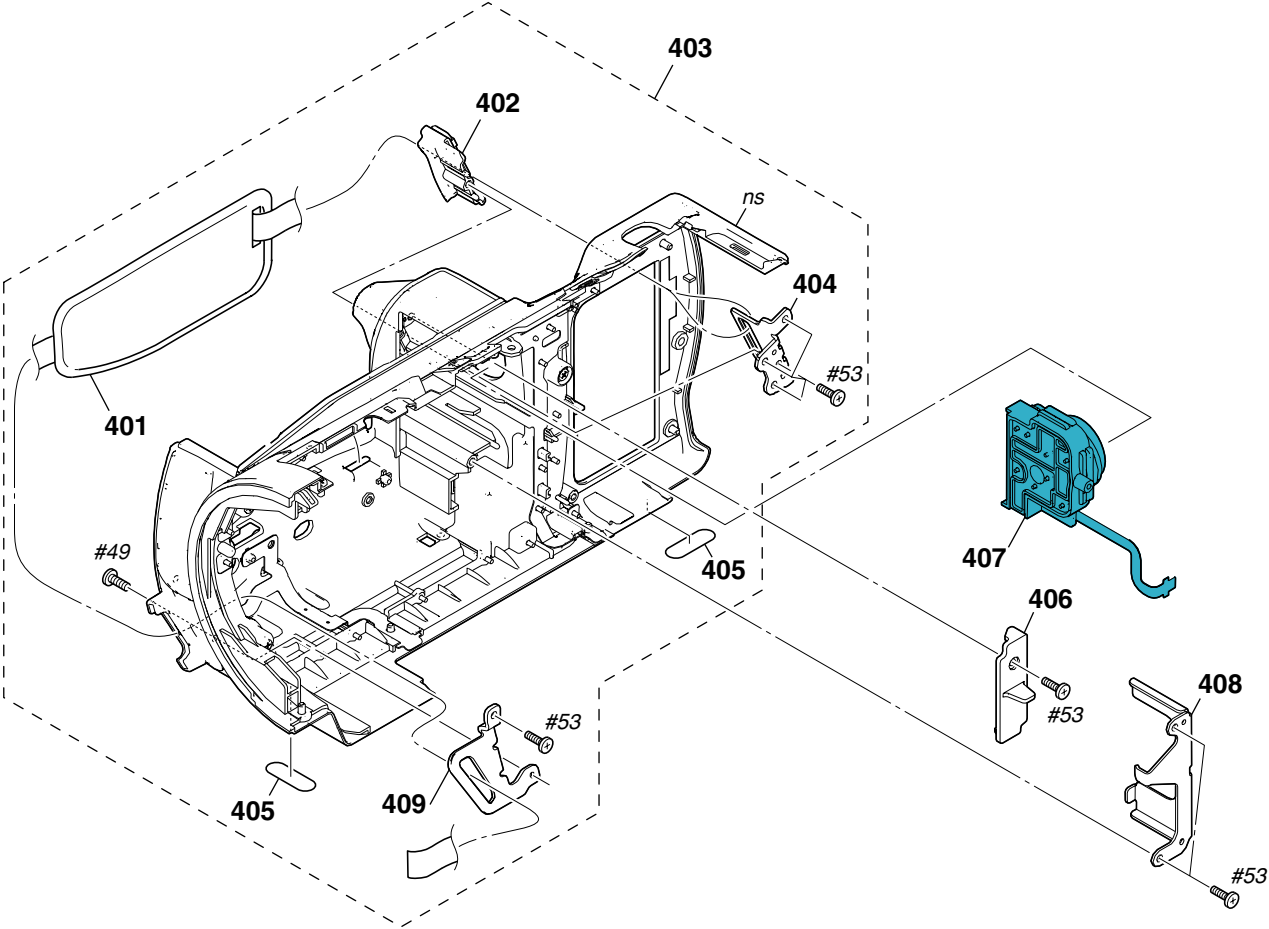
Ref. No.	Part No.	Description
#50	2-891-494-11	SCREW (M2), NEW TRUSTER, P2 (Red)
#53	3-080-206-21	SCREW, TAPPING, P2 (Black)

5. REPAIR PARTS LIST

HARDWARE LIST

5-1-9. CABINET (L) BLOCK

ns: not supplied



Ref. No.	Part No.	Description
401	2-892-004-01	BELT, GRIP
* 402	2-892-001-01	HOLDER, GRIP BELT
403	X-2159-304-1	CABINET (L) ASSY (D)
* 404	2-892-003-01	BRACKET (R), GRIP BELT
405	2-178-805-01	FOOT, RUBBER
* 406	2-892-005-01	RETAINER, PS

Ref. No.	Part No.	Description
407	1-479-811-11	SWITCH BLOCK, CONTROL (PS18500)
* 408	2-891-981-01	PLATE, PS FIXED
* 409	2-892-002-01	BRACKET (F), GRIP BELT
#49	2-630-005-31	SCREW (M2), NEW TRUSTER, P2 (Black)
#53	3-080-206-21	SCREW, TAPPING, P2 (Black)

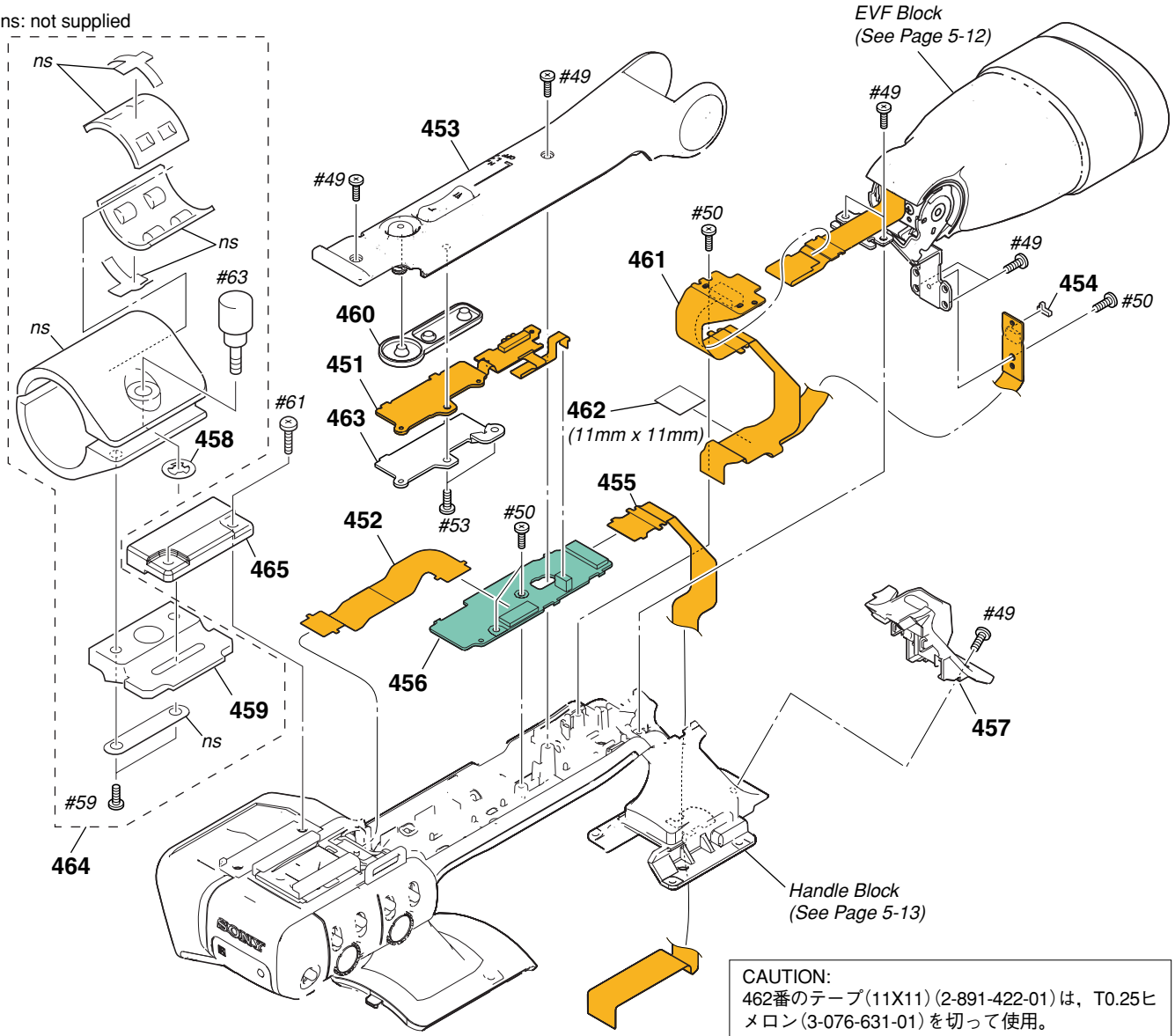
5. REPAIR PARTS LIST

DISASSEMBLY

HARDWARE LIST

5-1-10. HANDLE SECTION

ns: not supplied



CAUTION:
462番のテープ(11X11) (2-891-422-01)は、T0.25ヒメロン (3-076-631-01)を切って使用。

CAUTION:
For the part of 462: TAPE (11X11) (2-891-422-01), cut WOVEN (T0.25), FABRIC NON (3-076-631-01) into the desired length and use it.

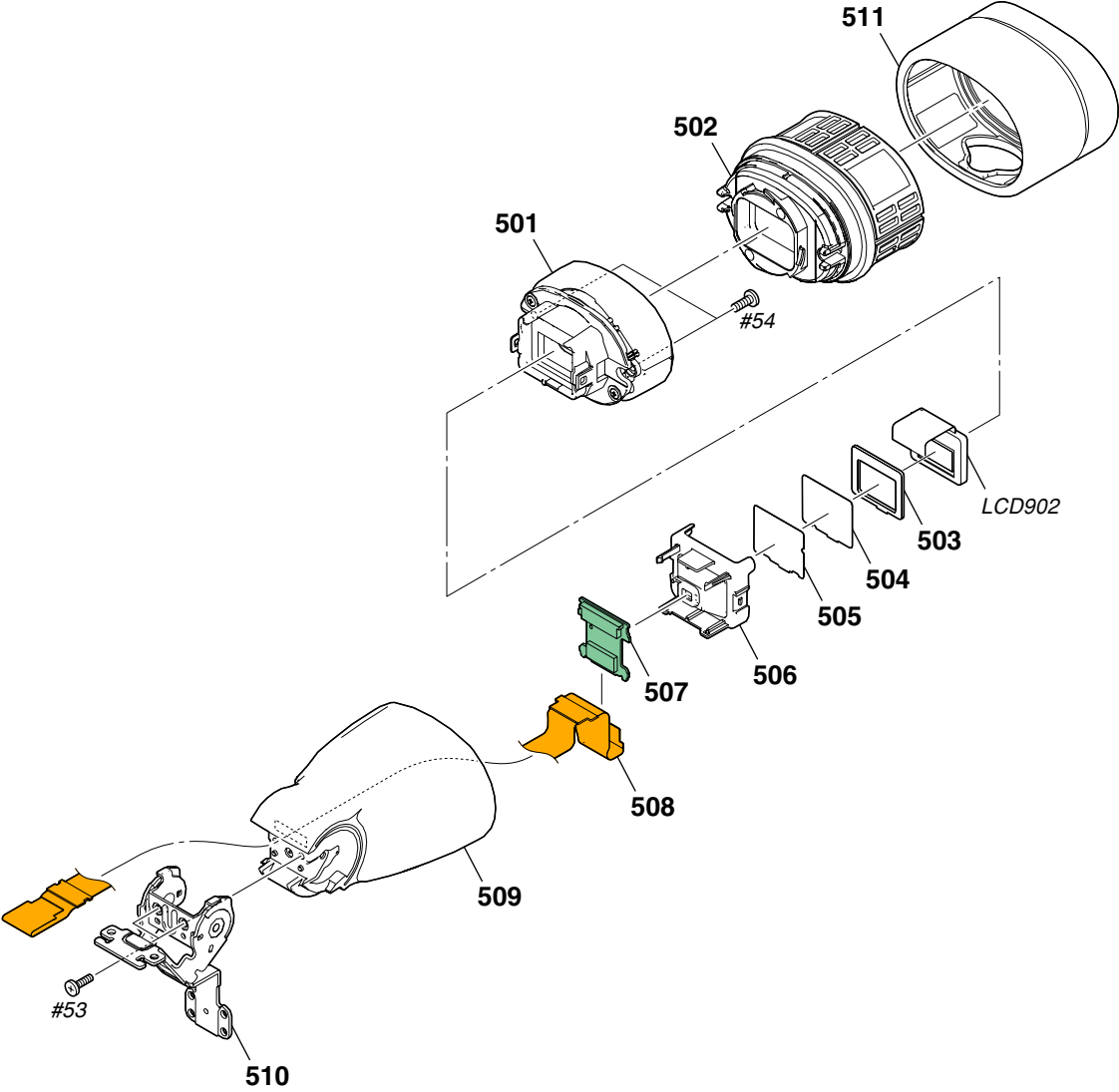
Ref. No.	Part No.	Description
451	A-1217-228-A	FP-483 FLEXIBLE BOARD, COMPLETE
452	1-870-121-11	FP-499 FLEXIBLE BOARD
453	X-2159-321-1	CABINET (UPPER) ASSY (D), HAN
* 454	2-891-983-01	CUSHION, LIGHT INTERCEPTION
455	1-870-122-11	FP-500 FLEXIBLE BOARD
456	A-1217-218-A	GG-003 BOARD, COMPLETE
457	X-2159-323-1	BASE ASSY (D), REMOTE CONTROL
458	3-165-904-01	WASHER, SCREW STOPPER
459	3-060-810-01	BASE, MICROPHONE HOLDER
* 460	2-892-090-01	KEY, RUBBER TACT
461	A-1217-229-A	FP-484 FLEXIBLE BOARD, COMPLETE

Ref. No.	Part No.	Description
462	CAUTION	TAPE (11X11)
463	2-898-108-01	BASE, 2ND KEY
464	X-3950-604-5	HOLDER ASSY, MICROPHONE
465	3-064-629-01	RETAINER (UPPER) D, HOLDER
#49	2-630-005-31	SCREW (M2), NEW TRUSTER, P2 (Black)
#50	2-891-494-11	SCREW (M2), NEW TRUSTER, P2 (Red)
#53	3-080-206-21	SCREW, TAPPING, P2 (Black)
#59	3-080-205-21	SCREW, TAPPING, P2 (Silver)
#61	7-682-549-09	SCREW +B 3X10 (Black)
#63	3-060-811-21	SCREW (M5) (Black)

5. REPAIR PARTS LIST

HARDWARE LIST

5-1-11. EVF BLOCK



Ref. No.	Part No.	Description
501	X-2159-325-1	HOLDER ASSY, VF PANEL
502	X-2159-324-1	FINDER ASSY
503	2-892-122-01	CUSHION, VF PANEL
504	2-633-596-01	SHEET (1), VF PRISM
505	2-633-595-01	SHEET (2), VF DIFFUSION
506	2-892-120-01	LAMP, VF HOLDER,
507	A-1217-213-A	UU-003 BOARD, COMPLETE

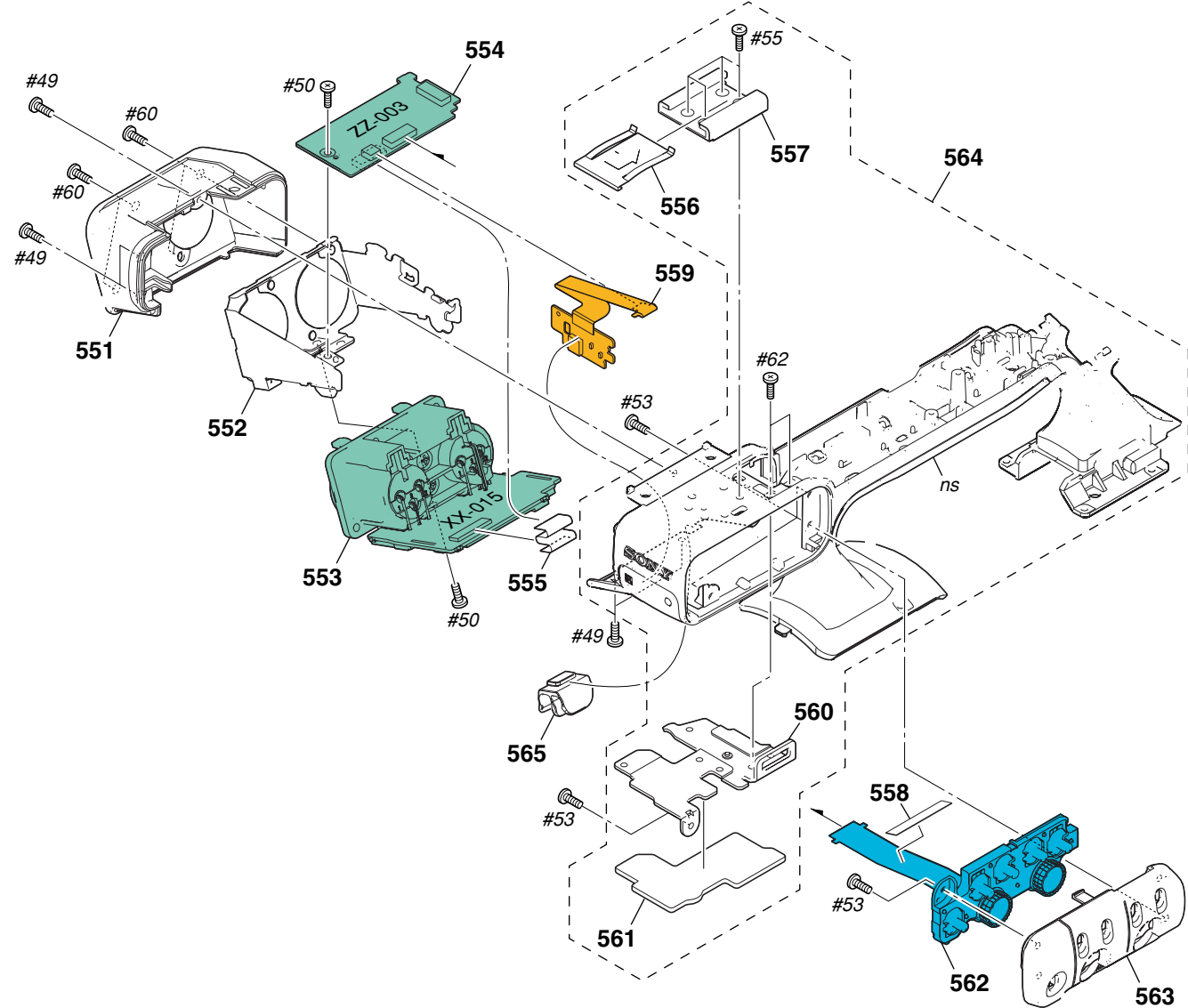
Ref. No.	Part No.	Description
508	1-870-123-11	FP-501 FLEXIBLE BOARD
509	X-2159-328-1	CABINET ASSY (D), VF
510	X-2159-326-1	TILT ASSY, VF
511	2-892-123-01	EYE CUP
LCD902	8-753-210-99	LCX068AK-1
#53	3-080-206-21	SCREW, TAPPING, P2 (Black)
#54	3-318-203-11	SCREW, TAPPING, P2 (Black)

5. REPAIR PARTS LIST

HARDWARE LIST

5-1-12. HANDLE BLOCK

ns: not supplied



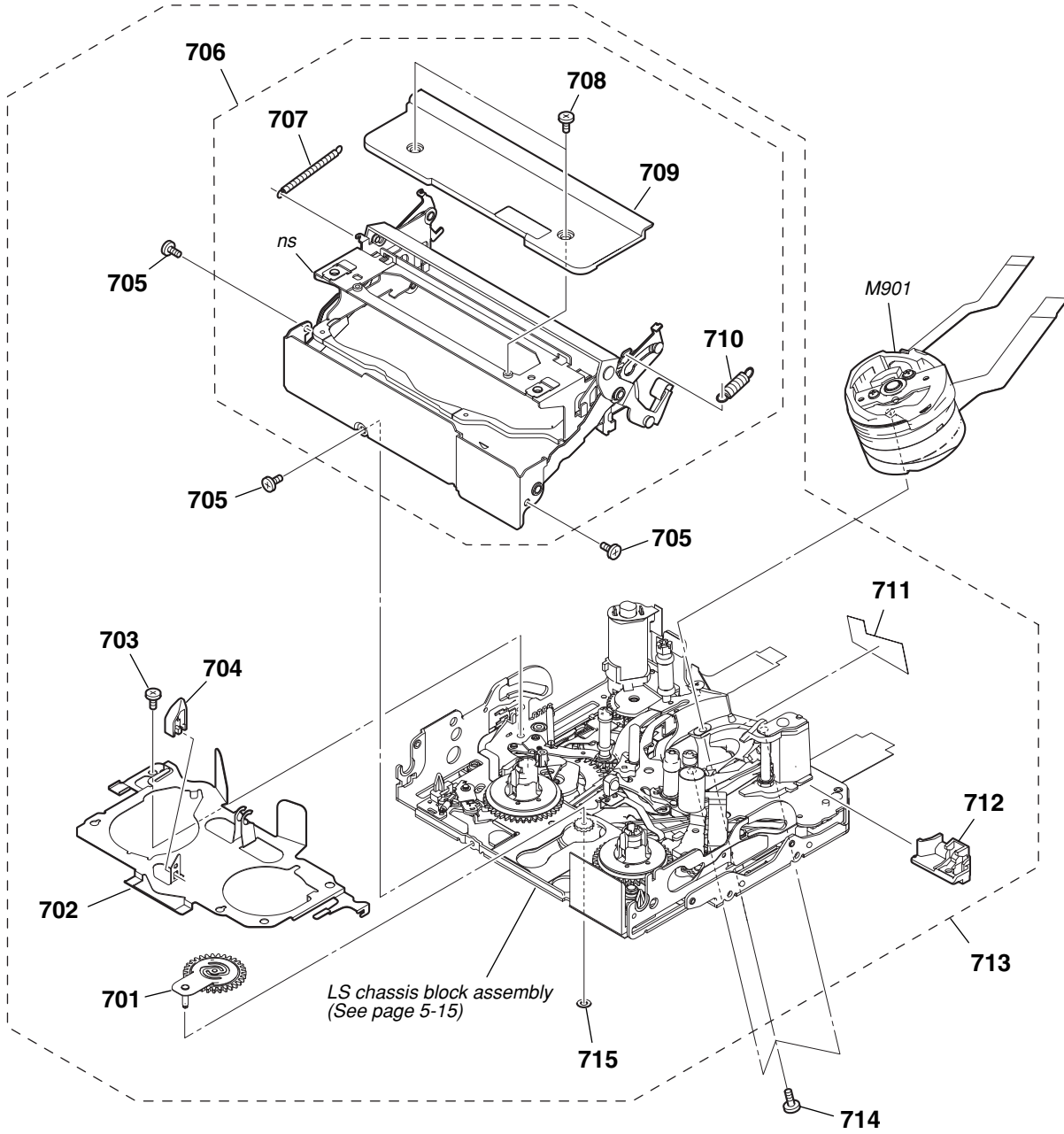
Ref. No.	Part No.	Description
551	2-892-093-01	CABINET (L), XL
* 552	2-892-094-01	SHEET METAL, XL
553	A-1217-224-A	XX-015 BOARD, COMPLETE
554	A-1217-215-A	ZZ-003 BOARD, COMPLETE
555	1-833-615-11	CABLE, FLEXIBLE FLAT (FFC-088)
556	3-688-754-11	SPRING
557	3-069-286-21	SHOE, ACCESSORY
* 558	2-894-845-01	TAPE (XR)
559	A-1217-233-A	FP-488 FLEXIBLE BOARD, COMPLETE
560	2-892-068-01	SHEET METAL, XL BELT
561	2-892-069-01	SHEET (D), POWDER PREVENTION

Ref. No.	Part No.	Description
562	1-479-815-11	SWITCH BLOCK, CONTROL (XR91030)
563	2-892-092-01	CABINET (R), XL
564	X-2159-318-1	CABINET ASSY (D), HANDLE
565	2-892-095-01	CLAMP, CABLE
#49	2-630-005-31	SCREW (M2), NEW TRUSTER, P2 (Black)
#50	2-891-494-11	SCREW (M2), NEW TRUSTER, P2 (Red)
#53	3-080-206-21	SCREW, TAPPING, P2 (Black)
#55	2-655-582-11	SCREW 0+P2 M2 NEWTRU-STAR (Silver)
#60	3-061-062-11	BOLT (M2.6) (Black)
#62	3-080-202-21	SCREW (M2), LOCK ACE, P2 (Silver)

5. REPAIR PARTS LIST

5-1-13. MECHANISM DECK SECTION

ns: not supplied



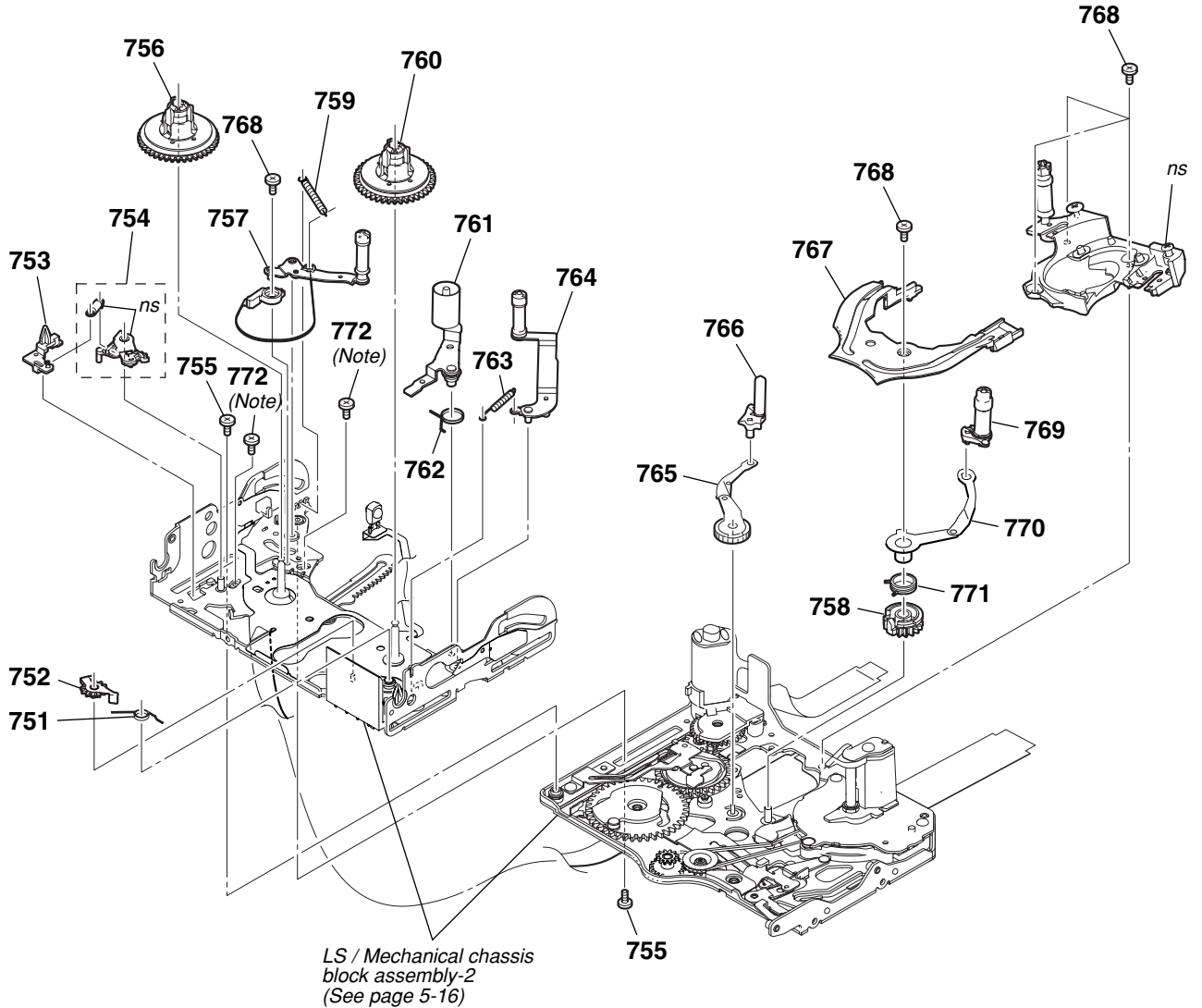
Ref. No.	Part No.	Description
701	X-2024-478-1	PENDULUM ASSY
702	2-342-917-02	LED BASE
703	7-627-850-77	SCREW, PRECISION +P 1.4X1.8
704	3-079-366-11	RELEASE, REEL LOCK
705	3-703-816-08	SCREW (M1.4X1.4), SPECIAL HEAD
706	X-2149-724-1	COMPARTMENT ASSY, CASSETTE
707	2-342-926-01	SPRING (ARM S), TENSION COIL
708	2-546-417-01	SCREW (M1.4)
709	2-342-933-02	PLATE, TOP

Ref. No.	Part No.	Description
710	2-342-927-01	SPRING (ARM T), TENSION COIL
711	2-541-585-01	SHEET, FLEXIBLE ADHESIVE
712	2-342-918-01	TG6 CATCHER
713	A-1080-997-A	MD (N100) SUB ASSY A
714	3-703-816-13	SCREW (M1.4X2.0), SPECIAL HEAD
715	3-315-414-31	WASHER
M901	A-1128-533-A	DRUM (DEH-33B-R)

5. REPAIR PARTS LIST

5-1-14. LS/MECHANICAL CHASSIS BLOCK ASSEMBLY-1

ns: not supplied



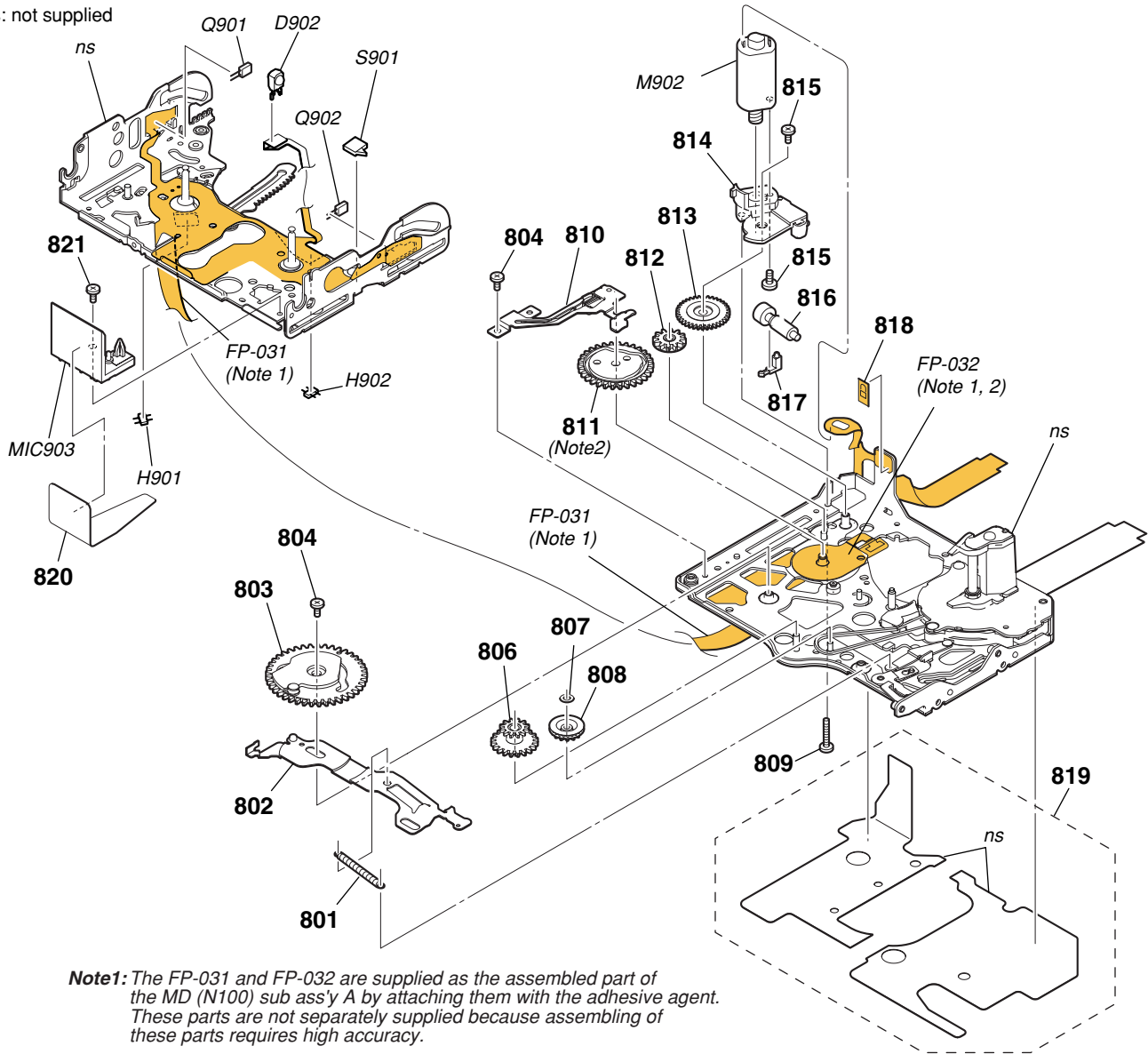
Note: These two screws are the fixing screws of the LS cam plate.
 These two fixing screws are used for adjusting the LS cam plate position.
 (refer to 4-2. LS cam adjustment of DV mechanical adjustment manual IX)

Ref. No.	Part No.	Description	Ref. No.	Part No.	Description
751	2-342-759-01	SPRING, RVS BRAKE	763	2-342-626-01	SPRING (RETURN TG6), EXTENSION
752	A-1083-005-A	BLOCK ASSY, RVS BRAKE	764	A-1083-002-A	BLOCK ASSY, TG6
753	2-342-731-01	POSITIONING, S	765	X-2024-468-3	ARM ASSY (S), GL
754	A-1083-006-A	BLOCK ASSY, S BRAKE	766	X-2024-465-1	COASTER (S) ASSY
755	3-075-097-11	SCREW (M1.4X1.4), SPECIAL HEAD	767	2-342-612-01	RAIL
756	X-2024-473-1	TABLE ASSY, S REEL	768	3-703-816-13	SCREW (M1.4X2.0), SPECIAL HEAD
757	A-1083-007-B	BLOCK ASSY, TENSION REGULATOR	769	X-2024-466-1	COASTER (T) ASSY
758	2-342-705-01	GEAR (T), GL	770	X-2024-469-1	ARM (T) ASSY, GL
759	2-342-902-01	SPRING, TENSION REGULATOR	771	2-342-716-01	SPRING (T), TORSION COIL
760	X-2024-474-1	TABLE ASSY, T REEL	772	3-703-816-08	SCREW (M1.4X1.4), SPECIAL HEAD
761	X-2024-476-1	ARM ASSY, PINCH			(for adjustment)
762	2-342-906-01	SPRING (PINCH RETURN), TORSION			

5. REPAIR PARTS LIST

5-1-15. LS/MECHANICAL CHASSIS BLOCK ASSEMBLY-2

ns: not supplied



Note1: The FP-031 and FP-032 are supplied as the assembled part of the MD (N100) sub ass'y A by attaching them with the adhesive agent. These parts are not separately supplied because assembling of these parts requires high accuracy.

Note2: The mode switch (S903) function works when the contactor of the FP-032 contacts with the bottom surface of wiper of the mode gear ass'y.

Ref. No.	Part No.	Description
801	2-342-624-01	SPRING (PINCH LIMITER), EXTENSION
802	X-2024-463-2	SLIDER ASSY, MODE
803	X-2024-462-1	GEAR ASSY, CAM
804	3-075-097-11	SCREW (M1.4X1.4), SPECIAL HEAD
806	2-342-621-01	GEAR, RELAY
807	3-315-414-31	WASHER
808	2-342-620-01	GEAR, CONVERSION
809	3-084-377-01	HEAD (SCREW M1.2)
810	X-2024-460-1	BASE ASSY, CAM
811	X-2024-461-1	GEAR ASSY, MODE
812	2-342-615-01	GEAR, NO.2
813	2-342-691-01	GEAR, NO.1
814	2-637-945-01	MOTOR HOLDER
815	3-895-822-71	SCREW (M1.2X2), SPECIAL, 0
816	2-342-689-01	WORM SHAFT (2J)

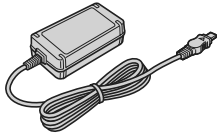
Ref. No.	Part No.	Description
817	2-342-690-02	BASE, MOTOR HOLDER
818	1-677-049-11	FP-228 FLEXIBLE BOARD (DEW SENSOR)
819	2-342-686-01	COVER, CAPSTAN
820	2-541-984-01	MIC COVER
821	3-703-816-13	SCREW (M1.4X2.0), SPECIAL HEAD
D902	6-500-652-01	DIODE GL453SE0000F (TAPE LED)
H901	8-719-067-74	ELEMENT, HOLE HW-105A-CDE-T (S REEL)
H902	8-719-067-74	ELEMENT, HOLE HW-105A-CDE-T (T REEL)
M902	X-2024-464-1	MOTOR ASSY (LOADING)
MIC903	1-818-576-11	PIN, CONNECTOR (WITH DETECTION)
Q901	6-550-672-01	TRANSISTOR PT4850FJE00F (TAPE END)
Q902	6-550-672-01	TRANSISTOR PT4850FJE00F (TAPE TOP)
S901	1-786-448-22	SWITCH, PUSH (1 KEY) (CC DOWN)

• **EXCEPT J MODEL**

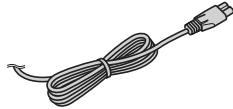
Checking supplied accessories.

to J MODEL

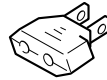
Note: This item is supplied with the unit as an accessory, but is not prepared as a service part.



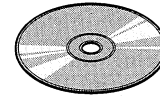
AC Adaptor
(AC-L15A)
△ 1-479-283-13



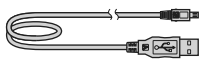
Power Cord
△ 1-782-476-51 (CH)
△ 1-790-107-42 (US, CND)
△ 1-823-946-12 (AEP, E)



Conversion (2P) Adaptor
△ 1-569-008-12 (E: NTSC)



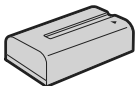
CD-ROM
"Manuals for Digital HD
Video Camera Recorder"
2-887-516-01



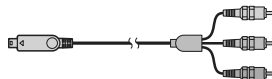
USB Cable
1-829-579-41



A/V Connection Cable
1-823-156-51



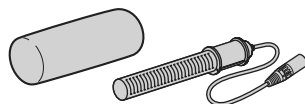
Rechargeable Battery Pack
NP-F570
(Note)



Component Video Cable
1-829-414-61



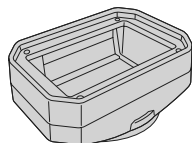
Wireless Remote Commander
RMT-831
1-478-495-41



Wind Screen, Microphone
8-814-298-90



Large Eyecup
2-892-124-01



Lens Hood with Lens Cover
2-892-688-01

Other accessories

- 2-887-519-01 MANUAL, INSTRUCTION (PDF) (JAPANESE) (Note)
- 2-887-519-11 MANUAL, INSTRUCTION (PRINTED MATERIAL/PDF) (ENGLISH) (US, CND, E) (Note)
- 2-887-519-21 MANUAL, INSTRUCTION (PDF) (FRENCH) (Note)
- 2-887-521-11 MANUAL, INSTRUCTION (PRINTED MATERIAL/PDF) (ENGLISH) (AEP, E) (Note)
- 2-887-521-21 MANUAL, INSTRUCTION (PRINTED MATERIAL/PDF) (SIMPLIFIED CHINESE) (CH) (Note)
- 2-887-521-31 MANUAL, INSTRUCTION (PDF) (FRENCH) (Note)
- 2-887-521-41 MANUAL, INSTRUCTION (PDF) (SPANISH) (Note)
- 2-887-521-51 MANUAL, INSTRUCTION (PDF) (ITALIAN) (Note)
- 2-887-521-61 MANUAL, INSTRUCTION (PDF) (GERMAN) (Note)

Note: INSTRUCTION MANUAL (PDF) of each language are included in CD-ROM "Manuals for Digital HD Video Camera Recorder".

• Refer to page 5-1 for mark △.

Viditec

Humberto 1° 2889 - C1231ACE - Bs As, Argentina
Tel: +54 11 4122-1200 Fax: +54 11 4308-5493

ingenieria@viditec.com.ar
viditec.com