

HVR-Z1J/Z1U/Z1N/ Z1E/Z1P/Z1C RMT-841

SERVICE MANUAL

Ver 1.0 2005.01

Revision History

How to use
Acrobat Reader



HVR-Z1U

*US Model
Canadian Model*

HVR-Z1E

AEP Model

HVR-Z1C

Chinese Model

HVR-Z1N/Z1P

E Model

HVR-Z1J

Japanese Model

Z (Z311) MECHANISM

Link

• SPECIFICATIONS	• BLOCK DIAGRAMS	• PRINTED WIRING BOARDS
• SERVICE NOTE	• FRAME SCHEMATIC DIAGRAMS	• REPAIR PARTS LIST
• DISASSEMBLY	• SCHEMATIC DIAGRAMS	• ADJUSTMENT


- [INSTRUCTION MANUAL](#) is shown at the end of this document.
- [Reference number search on printed wiring boards](#) is available.
- [TO TAKE OUT A CASSETTE WHEN NOT EJECT \(FORCE EJECT\)](#)

Mini DV Digital Video Cassette

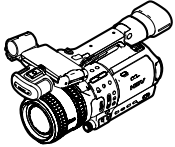
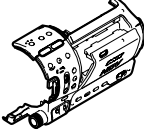
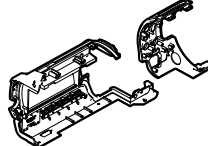
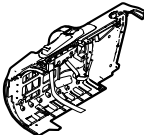
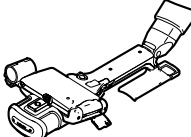
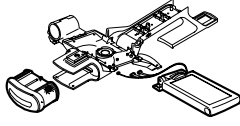
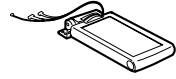
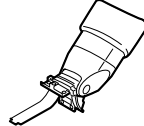
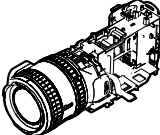
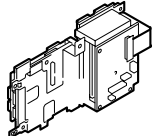

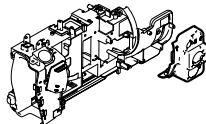
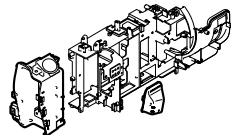
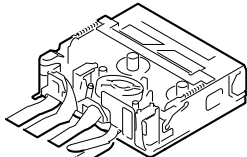
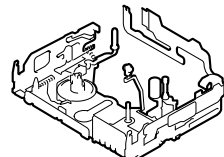
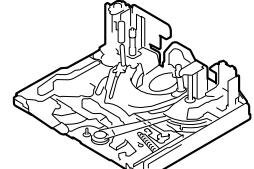
DIGITAL VIDEO CAMERA RECORDER

SONY®

5. REPAIR PARTS LIST (1/2)

 TO (2/2) 

NOTE: Characters **A** to **Z** of the electrical parts list indicate location of exploded views in which the desired part is shown.

Link	EXPLODED VIEWS			
 A	 B	 C	 D	
OVERALL SECTION	CABINET (R) SECTION-1	CABINET (R) SECTION-2	CABINET (L) SECTION	
 E	 F	 G	 H	
HANDLE SECTION-1	HANDLE SECTION-2	LCD SECTION	EVF SECTION	
 I	 J	 K	 L	
CENTER SECTION	MAIN BOARD(VA, VC, DA, DB) SECTION	LENS SECTION	TERMINAL CABINET SECTION	
 M	 N	 O	 P	
BATTERY SECTION AND DV SECTION	MECHANISM DECK OVERALL (Z311)	LS CHASSIS BLOCK ASSEMBLY	MECHANICAL CHASSIS BLOCK ASSEMBLY	

5. REPAIR PARTS LIST (2/2)



NOTE: Characters **A** to **Z** of the electrical parts list indicate location of exploded views in which the desired part is shown.

Link

ELECTRICAL PARTS LIST

ACCESSORIES

• CK-143 BOARD B	• FP-978 FLEXIBLE BOARD I	• PD-222 BOARD E
• FK-090 BOARD C	• FP-980 FLEXIBLE BOARD C	• SE-150 BOARD H
• FP-959 FLEXIBLE BOARD I	• FP-981 FLEXIBLE BOARD I	• SW-433 BOARD E
• FP-964 FLEXIBLE BOARD J	• IF-122 BOARD G	• VA-119 BOARD G
• FP-967 FLEXIBLE BOARD D	• JK-275 BOARD I	• CD-522 BOARD H
• FP-971 FLEXIBLE BOARD G	• LB-106 BOARD F	• DA-033 BOARD G
• FP-975 FLEXIBLE BOARD I	• MA-431 BOARD D	• DB-018 BOARD G
• FP-976 FLEXIBLE BOARD G	• MK-017 BOARD B	• VC-367 BOARD G
• FP-977 FLEXIBLE BOARD G	• MR-048 BOARD A	

5. REPAIR PARTS LIST

(ENGLISH)

NOTE:

- -XX, -X mean standardized parts, so they may have some differences from the original one.
- Items marked "*" are not stocked since they are seldom required for routine service. Some delay should be anticipated when ordering these items.
- The mechanical parts with no reference number in the exploded views are not supplied.
- Due to standardization, replacements in the parts list may be different from the parts specified in the diagrams or the components used on the set.
- CAPACITORS:
uF: μ F
- COILS
uH: μ H
- RESISTORS
All resistors are in ohms.
METAL: metal-film resistor
METAL OXIDE: Metal Oxide-film resistor
F: nonflammable
- SEMICONDUCTORS
In each case, u: μ , for example:
uA...: μ A..., uPA..., μ PA...,
uPB..., μ PB..., uPC..., μ PC...,
uPD..., μ PD...

(JAPANESE)

【使用上の注意】

- *印の部品は常備在庫しておりません。
- 分解図中の機構部品で、図面番号のない部品は供給しません。
- -XX, -Xは標準化部品のため、セットに付いている部品と異なる場合があります。
- ここに記載されている部品は、補修用部品であるため、回路図及びセットに付いている部品と異なる場合があります。
- コンデンサの単位でuFは μ Fを示します。
- 抵抗の単位 Ω は省略してあります。
金 被：金属被膜抵抗。
サンキン：酸化金属被膜抵抗。
- インダクタの単位でuHは μ Hを示します。
- 半導体の名称でuA..., uPA..., uPB..., uPC..., uPD...等はそれぞれ μ A..., μ PA..., μ PB..., μ PC..., μ PD...を示します。

(ENGLISH)

When indicating parts by reference number, please include the board name.

(JAPANESE)

お願い
図面番号で部品を指定するときは基板名又はブロックを併せて指定してください。

(ENGLISH/FRENCH)

The components identified by mark \triangle or dotted line with mark \triangle are critical for safety. Replace only with part number specified.

Les composants identifiés par une marque \triangle sont critiques pour la sécurité. Ne les remplacer que par une pièce portant le numéro spécifié.

(JAPANESE)

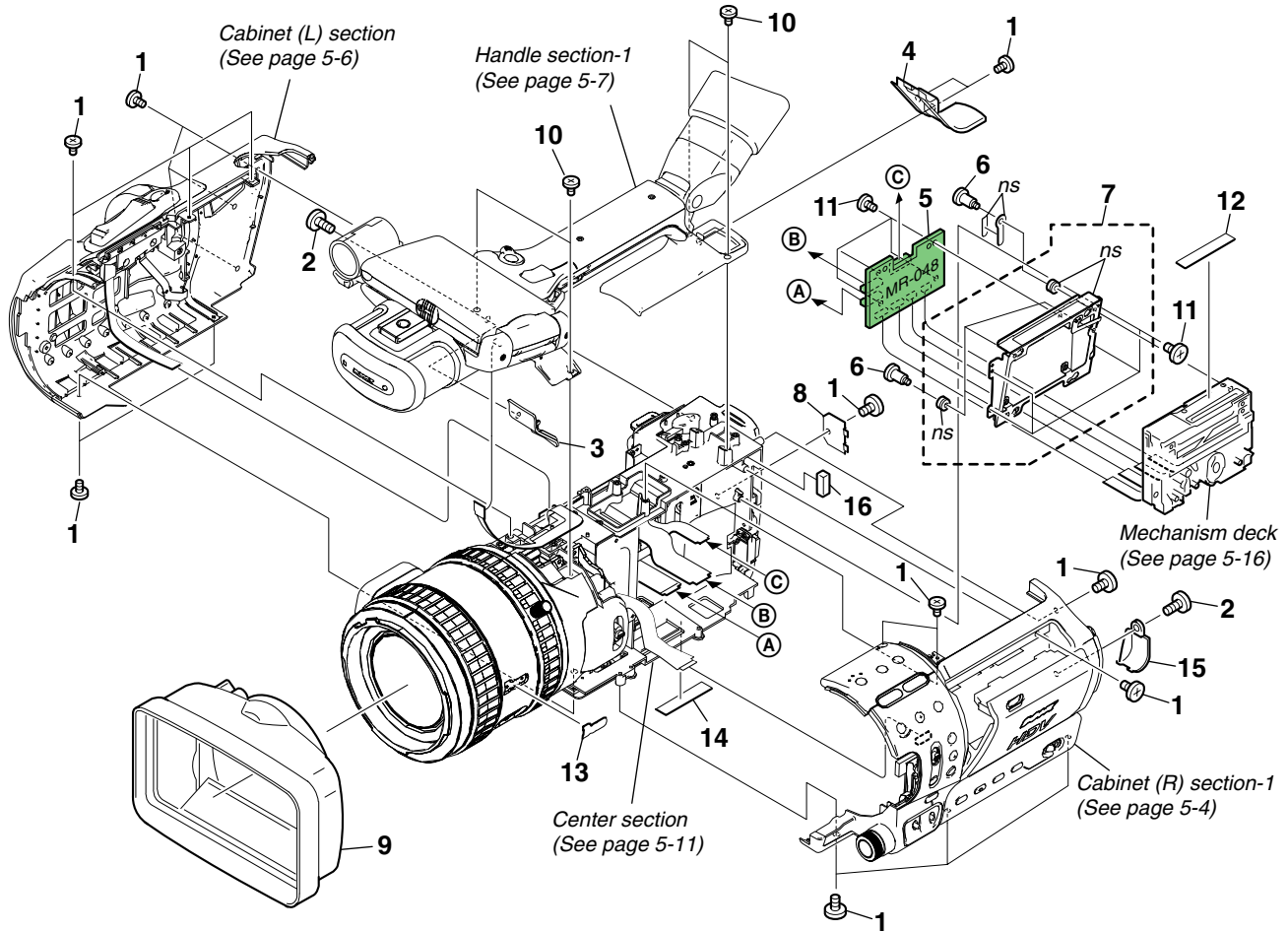
\triangle 印の部品、または \triangle 印付の点線で囲まれた部品は、安全性を維持するために、重要な部品です。従って交換時は、必ず指定の部品を使用してください。

5. REPAIR PARTS LIST

5-1. EXPLODED VIEWS

5-1-1. OVERALL SECTION

ns : not supplied



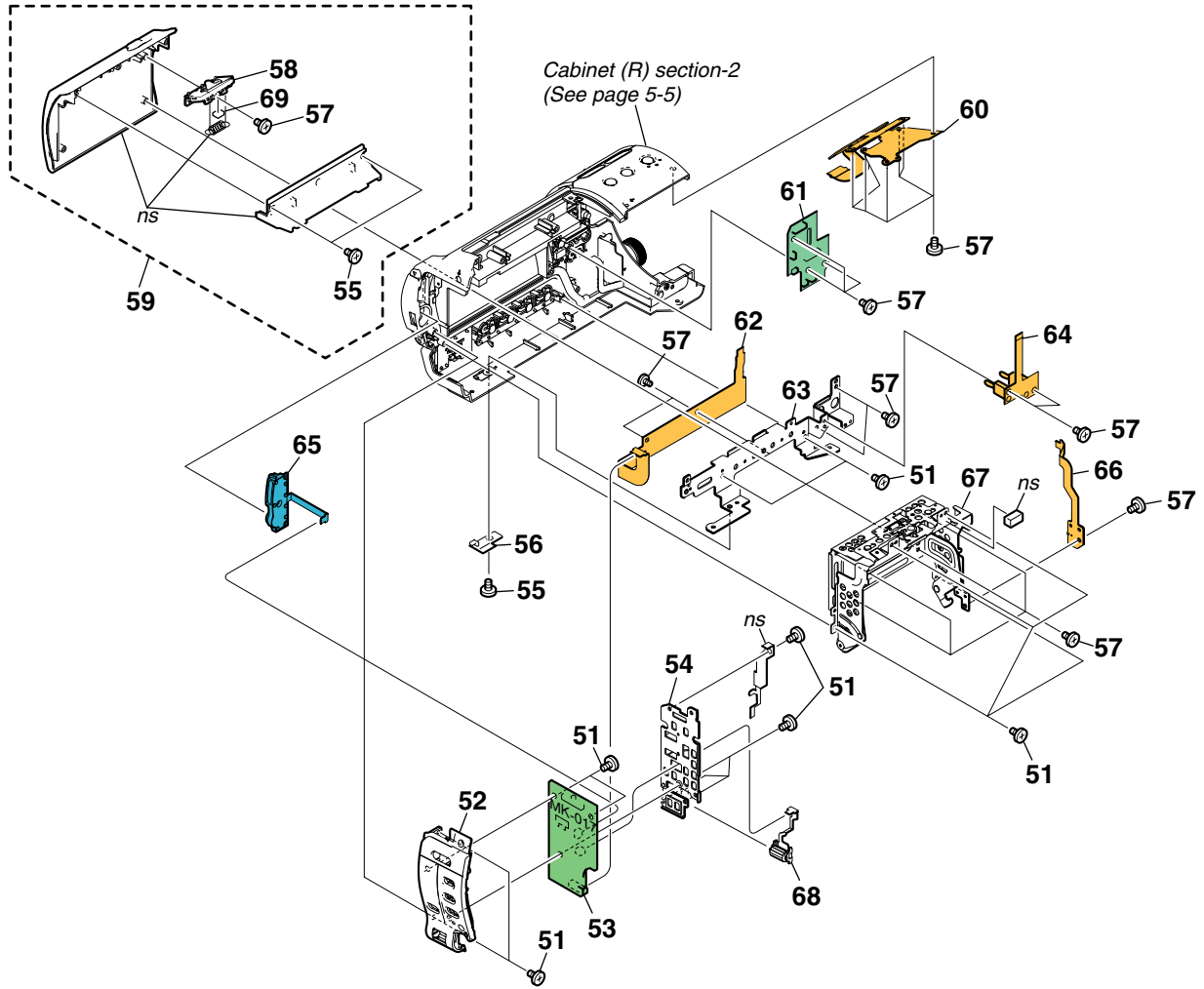
Ref. No.	Part No.	Description
1	3-080-203-31	SREW (M2), LOCK ACE, P2
2	3-080-203-51	SREW (M2), LOCK ACE, P2
3	2-178-563-11	CABINET (FRONT), HANDLE
4	X-2023-935-1	CABINET (REAR) ASSY (D), HANDL
5	A-1097-501-A	MR-048 BOARD, COMPLETE
6	3-059-718-01	SCREW (M1.4X1.5)
7	X-2023-308-1	CHASSIS (MD) ASSY
8	2-179-097-11	LID, CPC

Ref. No.	Part No.	Description
9	2-186-430-01	HOOD
10	3-061-062-11	BOLT (M2.6)
11	3-080-202-21	SCREW (M2), LOCK ACE, P2
12	3-081-221-01	LABEL (Z), LS
13	3-963-933-01	EMBLEM, CCD
14	2-349-043-01	LABEL, TEMP. RECYCLE DATE (Z1J)
15	2-549-592-01	COVER (DCIN)
16	2-546-754-01	GASKET (CS)

5. REPAIR PARTS LIST

5-1-2. CABINET (R) SECTION-1

ns : not supplied



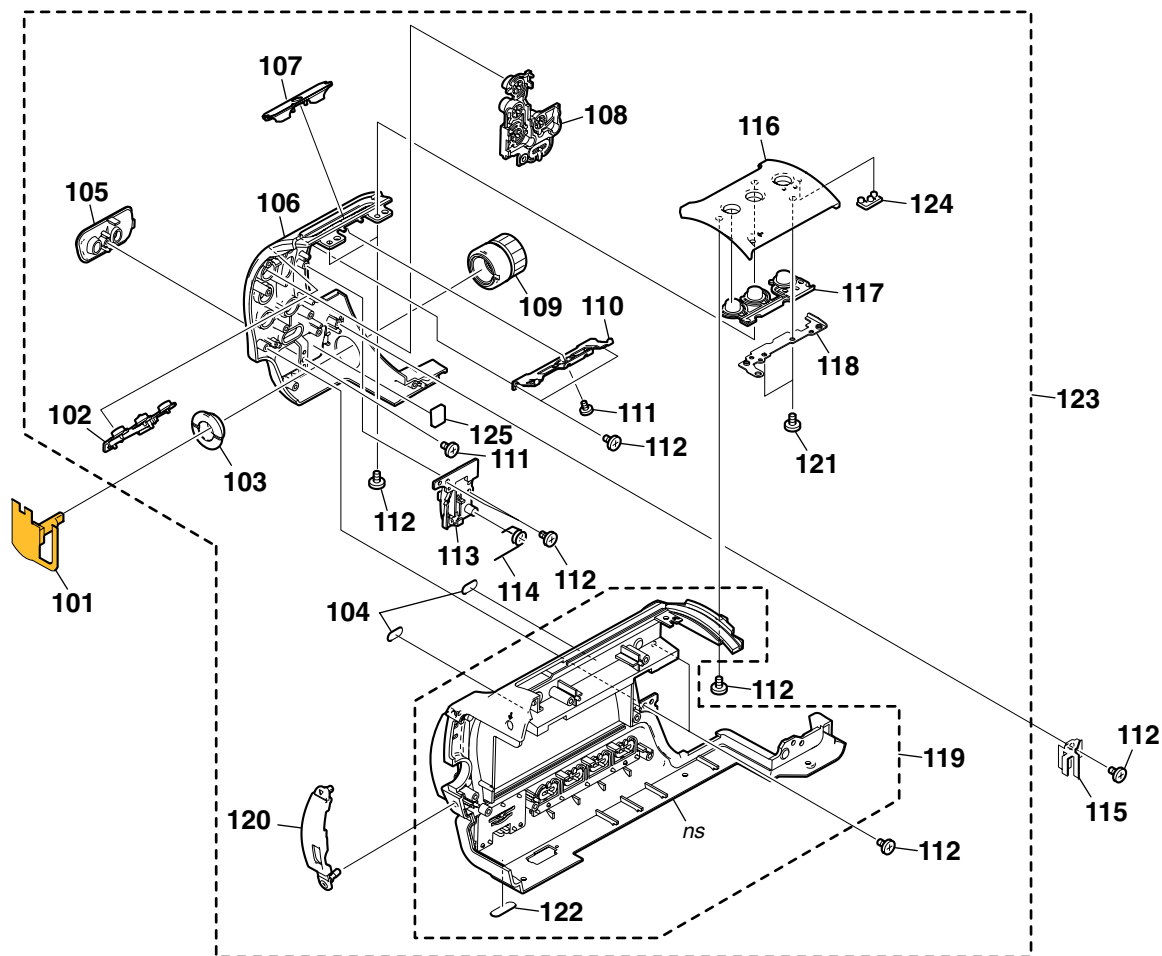
Ref. No.	Part No.	Description
51	3-080-206-21	SCREW, TAPPING, P2
52	X-2023-946-1	PANEL (D) ASSY, CAMERA CONTROL
53	A-1081-906-A	MK-017 BOARD, COMPLETE
54	X-2048-559-2	BRACKET (KURUPON) ASSY
55	3-080-203-31	SREW (M2), LOCK ACE, P2
56	2-179-168-11	LID, MD
57	3-080-202-21	SCREW (M2), LOCK ACE, P2
58	X-2023-895-1	KNOB (D) ASSY, EJECT
59	X-2023-894-1	LID (D) ASSY, CASSETTE
60	1-864-137-21	FP-961 FLEXIBLE BOARD

Ref. No.	Part No.	Description
61	A-1073-864-A	CK-143 BOARD, COMPLETE
62	1-864-142-21	FP-966 FLEXIBLE BOARD
63	2-179-113-01	SHEET METAL (AUTOLOCK), GROUND
64	1-864-139-21	FP-963 FLEXIBLE BOARD
65	1-479-239-11	SWITCH BLOCK, CONTROL (VV91010)
66	1-864-141-21	FP-965 FLEXIBLE BOARD
67	X-2023-383-1	FRAME ASSY, CS
68	1-478-964-11	ENCODER (ROTARY)
69	2-349-540-01	CUSHION (EJECT)

5. REPAIR PARTS LIST

5-1-3. CABINET (R) SECTION-2

ns : not supplied

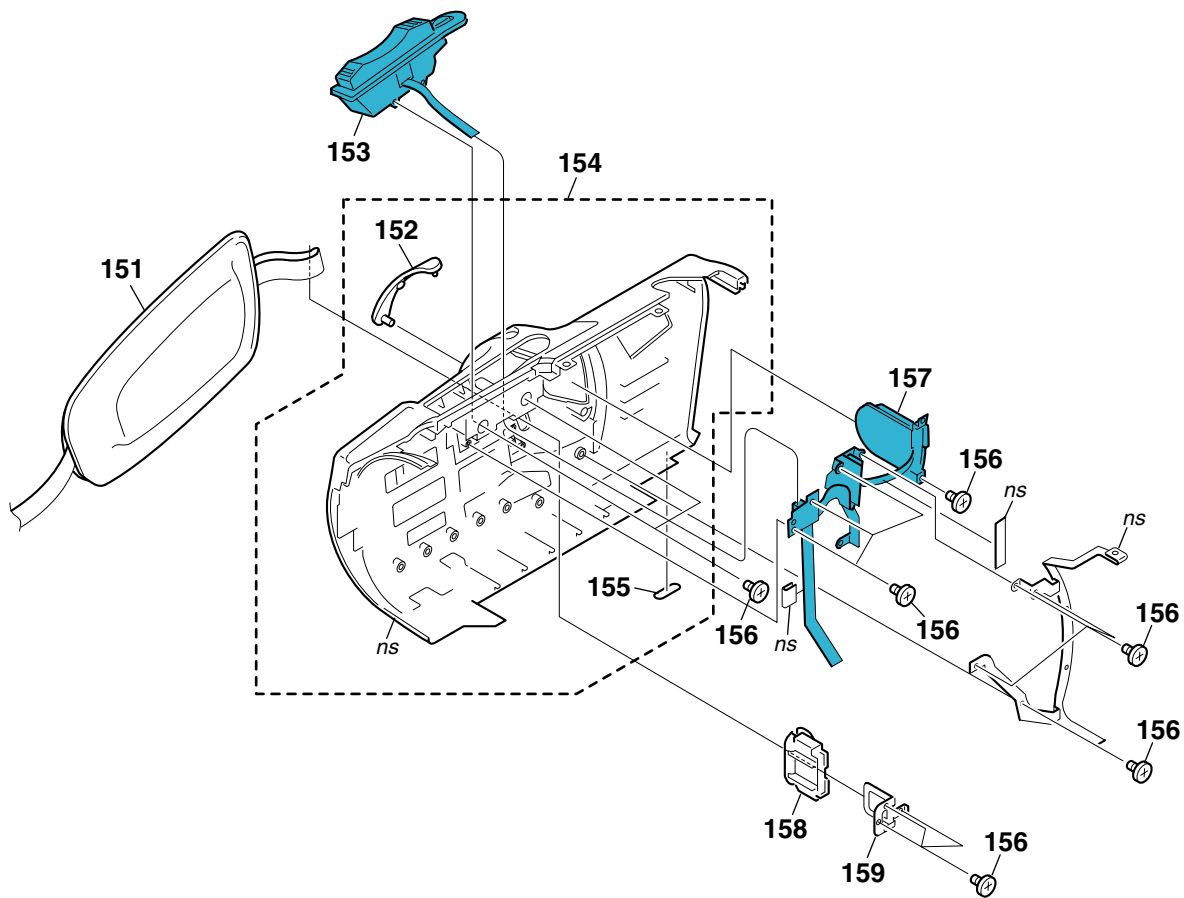


Ref. No.	Part No.	Description	Ref. No.	Part No.	Description
101	1-864-138-21	FP-962 FLEXIBLE BOARD	114	2-179-164-01	SPRING (F), TORSION
102	2-179-125-11	BUTTON (BACK LIGHT), 3 GANGS	115	2-179-112-01	BRACKET (IRIS)
103	2-179-137-01	HOLDER (2), IRIS KNOB	116	2-179-122-01	CABINET (R (STEM UPPER))
104	2-179-160-01	CUSHION (CASSETTE LID)	117	2-179-130-11	BUTTON, TRNS
105	2-179-124-21	ESCUTCHEON (GAIN)	118	2-179-133-01	BRACKET (ST)
106	2-179-123-01	CABINET (R (STEM LOWER))	119	X-2023-891-1	CABINET (R D) SUB ASSY
107	X-2023-893-1	PLATE (HDV) (D) ASSY	120	2-189-574-01	COVER (VOL) (D), SWITCH
108	2-179-126-11	BUTTON (USER), 3 GANGS	121	3-078-889-11	SCREW (M1.7)
109	X-2024-876-11	KNOB ASSY, IRIS	122	2-178-805-01	FOOT, RUBBER
110	2-179-132-01	BRACKET (HDV)	123	X-2023-890-1	CABINET (R) (D) ASSY
111	3-078-890-01	SCREW, TAPPING	124	2-179-131-01	LIGHT (TRANS), GUIDE
112	3-080-202-21	SCREW (M2), LOCK ACE, P2	125	2-055-995-01	SPACER (40), B (TO) (B)
113	X-2023-892-1	KNOB (D) ASSY, F			

5. REPAIR PARTS LIST

5-1-4. CABINET (L) SECTION

ns : not supplied



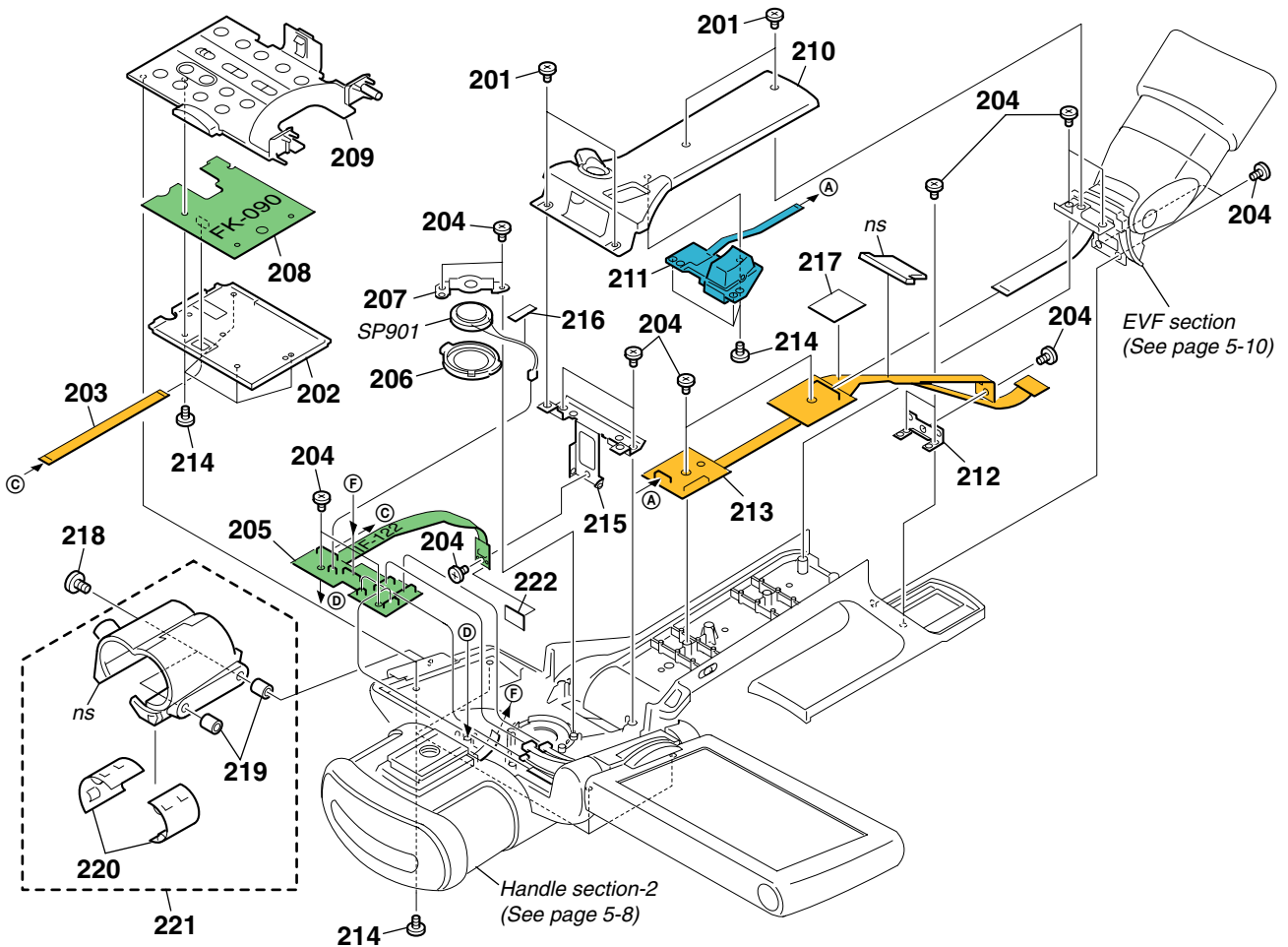
Ref. No.	Part No.	Description
151	2-178-804-01	BELT, GRIP
152	2-159-436-01	COVER, JACK
153	1-478-912-21	SWITCH BLOCK, CONTROL (CF5610)
154	X-2023-939-1	CABINET (L) ASSY (D)
155	2-178-805-01	FOOT, RUBBER

Ref. No.	Part No.	Description
156	3-080-205-21	SCREW, TAPPING, P2
157	1-478-876-31	SWITCH BLOCK, CONTROL (PS5610)
158	2-159-435-01	HOLDER, GRIP BELT
159	2-159-437-01	SHEET METAL, GRIP BELT

5. REPAIR PARTS LIST

5-1-5. HANDLE SECTION-1

ns : not supplied

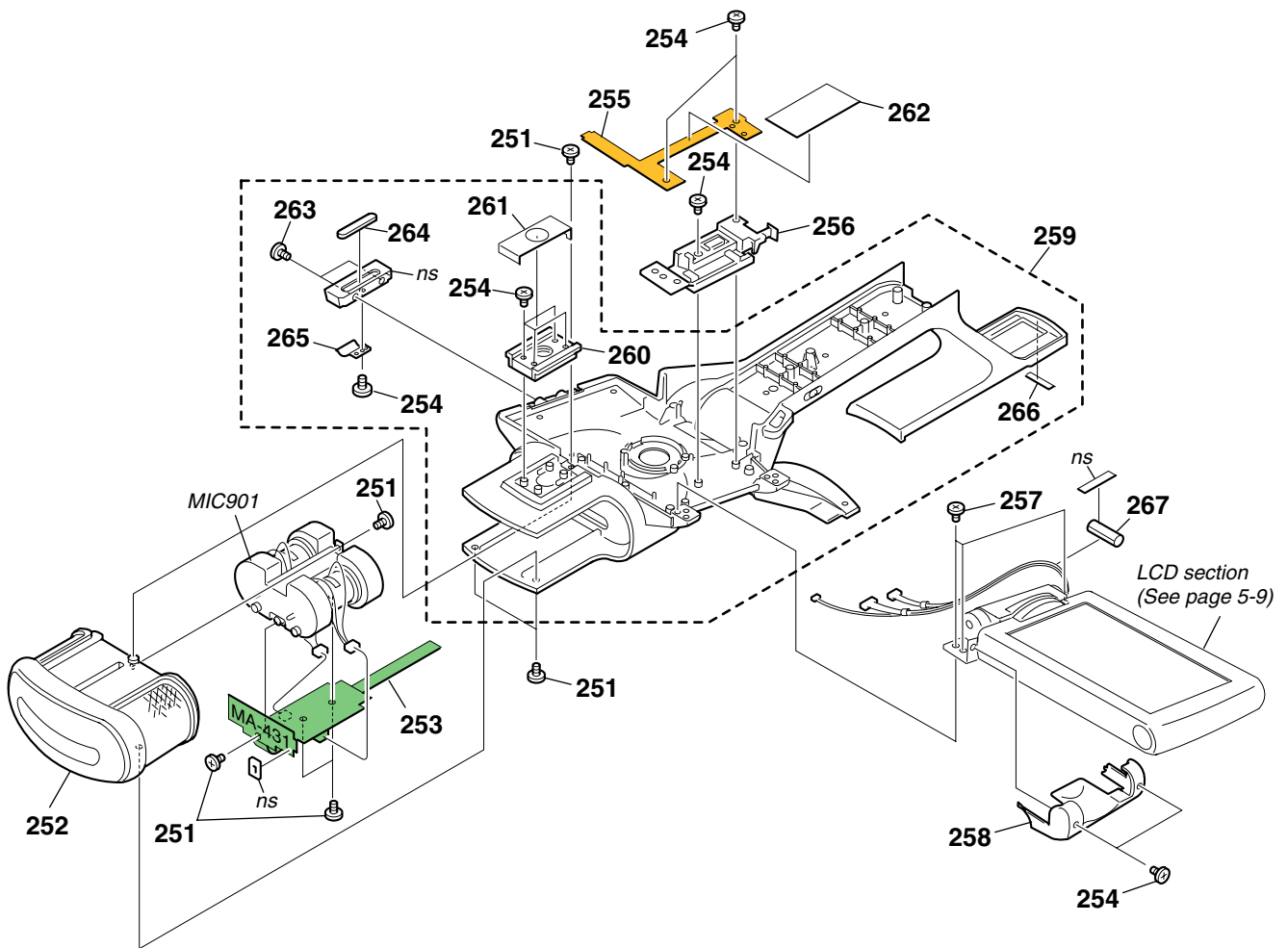


Ref. No.	Part No.	Description	Ref. No.	Part No.	Description
201	3-080-203-31	SREW (M2), LOCK ACE, P2	213	A-1073-876-A	FP-980 FLEXIBLE BOARD
202	2-178-564-01	COVER, BUTTON	214	3-080-206-21	SCREW, TAPPING, P2
203	1-829-703-11	CABLE, FLEXIBLE FLAT (FDM-009)	215	2-178-400-01	BRACKET, IF
204	3-080-202-21	SCREW (M2), LOCK ACE, P2	216	3-061-516-01	SHEET, RF FLEXIBLE
205	A-1073-871-A	IF-122 BOARD, COMPLETE	217	3-060-795-01	TAPE, HARNESS FIXED
206	2-178-550-01	HOLDER, SPEAKER	218	3-719-159-11	SCREW (M3), (+ BW)
207	X-2023-281-1	RETAINER ASSY, SPEAKER	219	3-654-058-02	SPACER 3X3
208	A-1073-865-A	FK-090 BOARD, COMPLETE	220	3-608-303-01	RUBBER
209	X-2023-936-1	CABINET ASSY (D), HANDLE PANEL	221	X-2023-933-1	HOLDER ASSY, MICROPHONE
210	X-2023-934-1	CABINET (UPPER) ASSY (D), HAND	222	2-547-787-01	SHEET (BB)
211	1-478-955-11	SWITCH BLOCK, CONTROL (ZS-5610)	SP901	1-825-968-11	LOUDSPEAKER (1.8CM)
212	2-179-995-01	BRACKET (REAR, PWB) CHASSIS			

5. REPAIR PARTS LIST

5-1-6. HANDLE SECTION-2

ns : not supplied



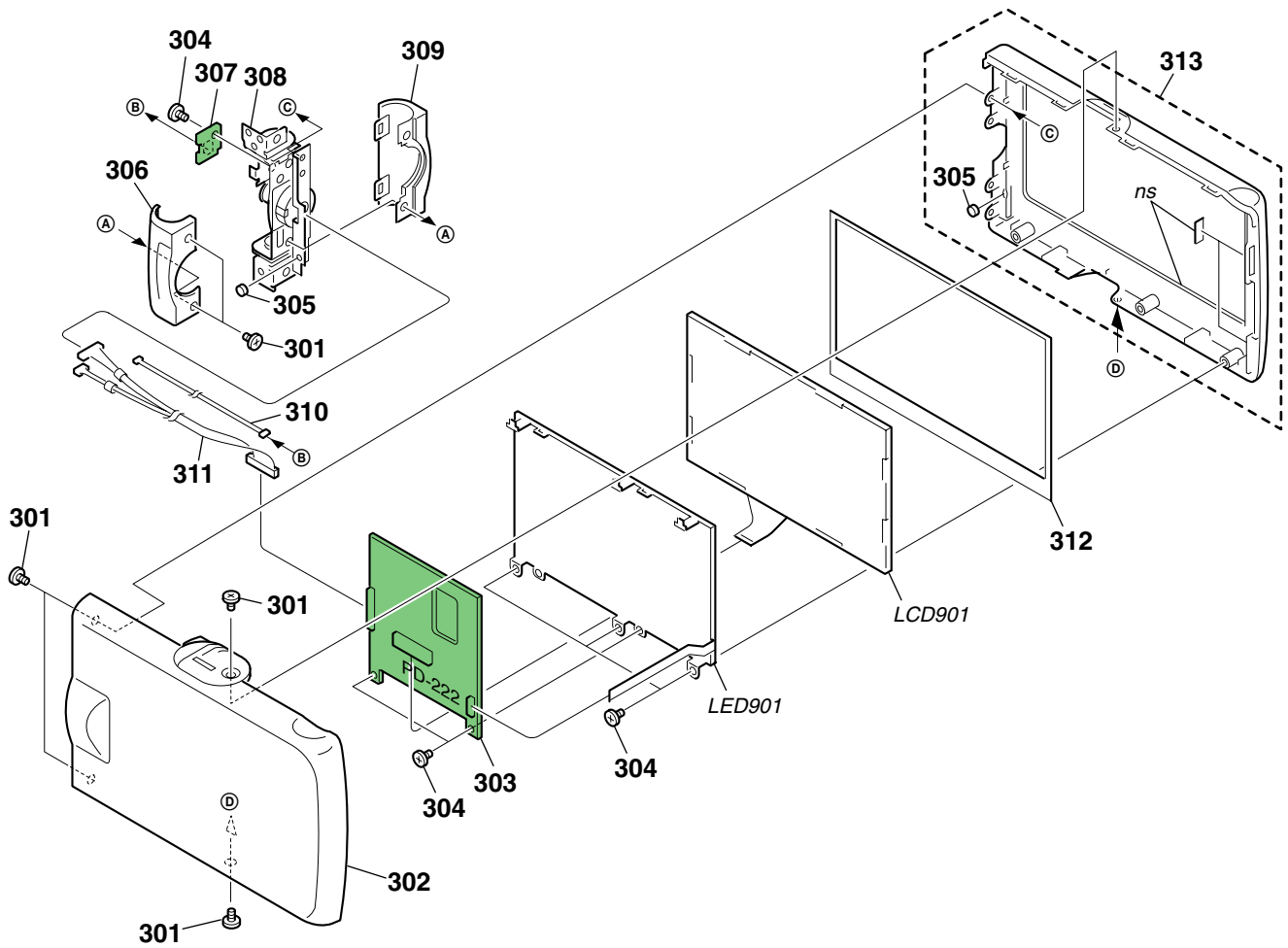
Ref. No.	Part No.	Description
251	3-080-206-21	SCREW, TAPPING, P2
252	X-2023-937-1	MASK ASSY (D), MICROPHONE
253	A-1073-872-A	MA-431 BOARD, COMPLETE
254	3-080-203-31	SREW (M2), LOCK ACE, P2
255	A-1073-875-A	FP-967 FLEXIBLE BOARD
256	2-179-409-01	GUIDE, HARNESS
257	7-627-556-37	SCREW, PRECISION +P2.6X4 TYPE 1
258	2-179-396-11	COVER (LOWER), HINGE
259	X-2023-998-1	HANDLE ASSY (D)

Ref. No.	Part No.	Description	
260	2-178-567-01	WASHER, ACCESSORY FITTING	
261	2-178-568-01	COVER, ACCESSORY FITTING WASHER	
262	2-549-852-01	SHEET (FP967), PROTECTION	
263	3-061-062-11	BOLT (M2.6)	
264	2-189-578-01	CUSHION (D), PANEL	
*	265	3-678-684-00	HOLDER, CABLE
	266	2-348-510-01	SPACER (HANDLE REAR)
	267	2-514-960-01	CLAMP, HARNESS
	MIC901	1-542-606-11	MICROPHONE UNIT

5. REPAIR PARTS LIST

5-1-7. LCD SECTION

ns : not supplied



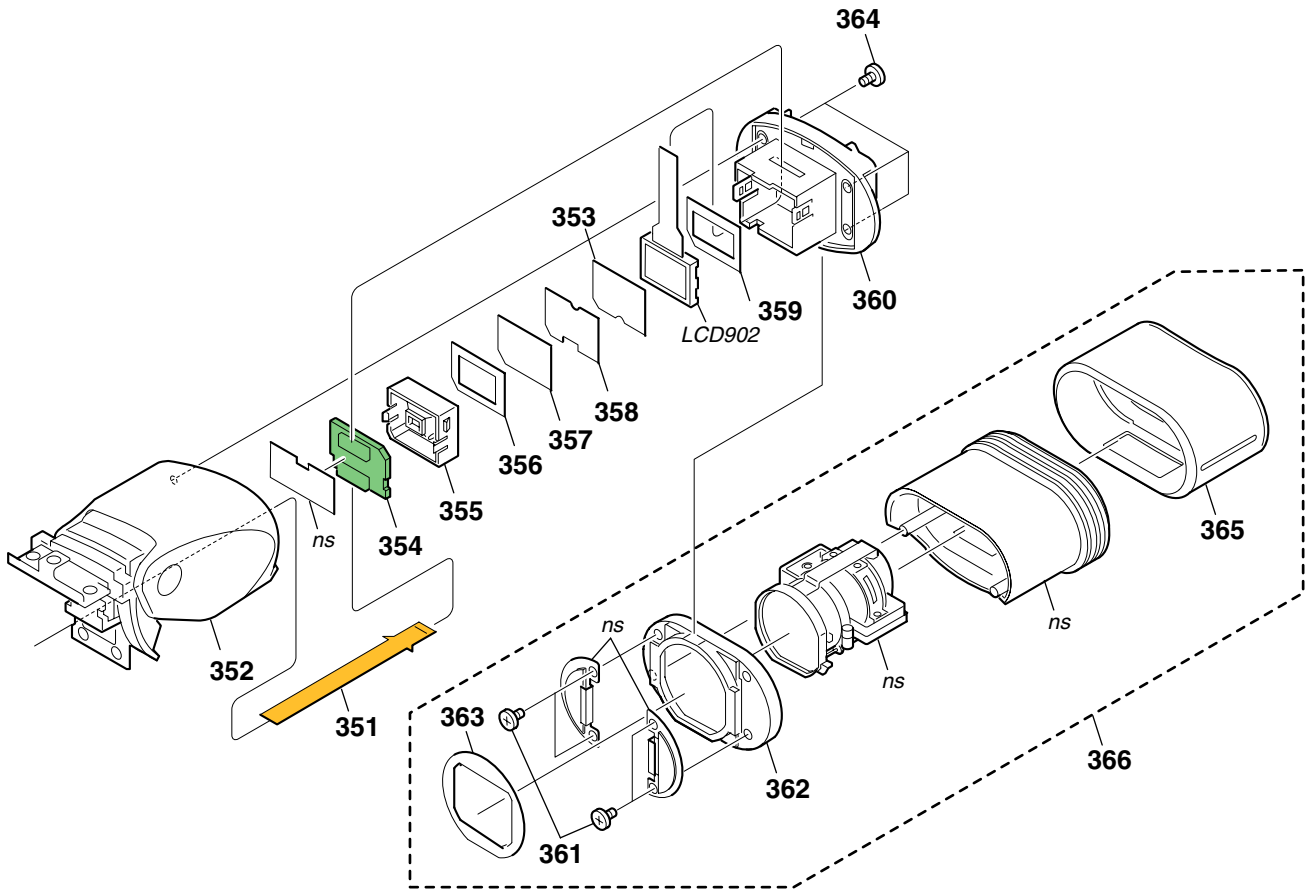
Ref. No.	Part No.	Description
301	3-080-203-31	SREW (M2), LOCK ACE, P2
302	X-2023-940-1	CABINET (C) ASSY (D), P
303	A-1073-868-A	PD-222 BOARD, COMPLETE
304	3-080-202-21	SCREW (M2), LOCK ACE, P2
305	1-471-278-11	MAGNET
306	2-179-394-11	COVER (FRONT), HINGE
307	A-1073-870-A	SW-433 BOARD, COMPLETE
308	X-2023-394-1	HINGE ASSY

Ref. No.	Part No.	Description
309	2-179-395-11	COVER (REAR), HINGE
310	1-963-030-11	HARNESS (SW-116)
311	1-963-156-11	HARNESS (PD-226)
312	2-190-969-01	CUSHION, PANEL
313	X-2024-038-1	CABINET (M) ASSY, P
LCD901	8-753-209-06	ACX530AK-J
LED901	1-478-568-11	BLOCK, LIGHT GUIDE PLATE (3.5)

5. REPAIR PARTS LIST

5-1-8. EVF SECTION

ns : not supplied



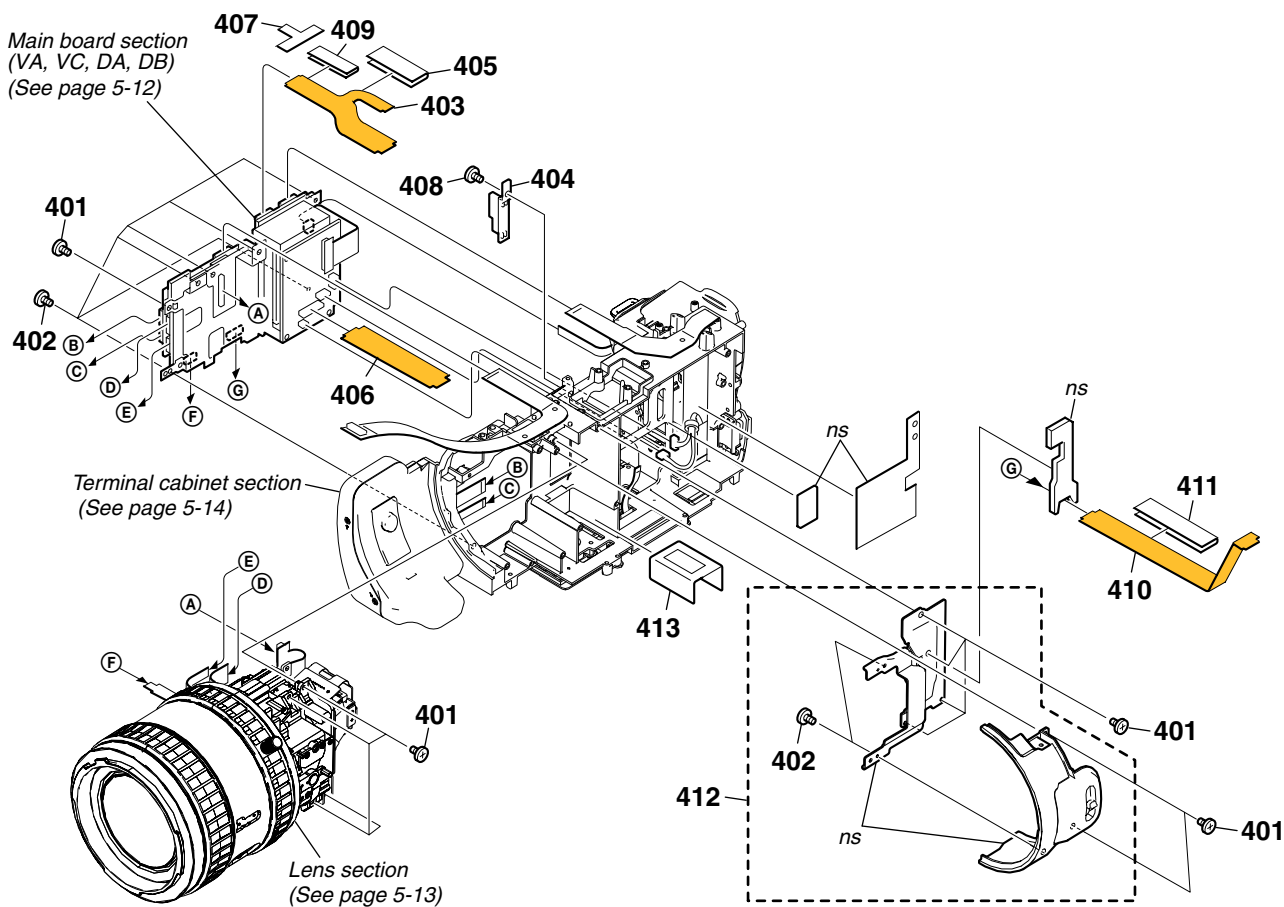
Ref. No.	Part No.	Description
351	1-864-152-01	FP-984 FLEXIBLE BOARD
352	X-2023-945-1	CABINET (FRONT) ASSY (D), VF
353	2-179-259-01	SHEET (A), PRISM
354	A-1073-866-A	LB-106 BOARD, COMPLETE
355	2-179-258-01	GUIDE, LAMP
356	2-179-261-01	CUSHION, LCD
357	2-179-257-01	ILLUMINATOR (VF), LCD
358	2-179-260-01	SHEET (B), PRISM
359	2-189-594-01	PLATE, LCD GROUND

Ref. No.	Part No.	Description
360	X-2023-924-1	HOLDER ASSY, LCD
361	3-080-204-21	SCREW, TAPPING, P2
362	2-179-266-01	BASE, HOLDER
363	2-179-265-01	PANEL, POLARIZATION
364	3-080-203-31	SREW (M2), LOCK ACE, P2
365	2-179-291-01	EYE CUP
366	X-2023-944-1	CABINET ASSY (D), VF REAR
LCD902	8-753-210-99	LCX068AK-1

5. REPAIR PARTS LIST

5-1-9. CENTER SECTION

ns : not supplied

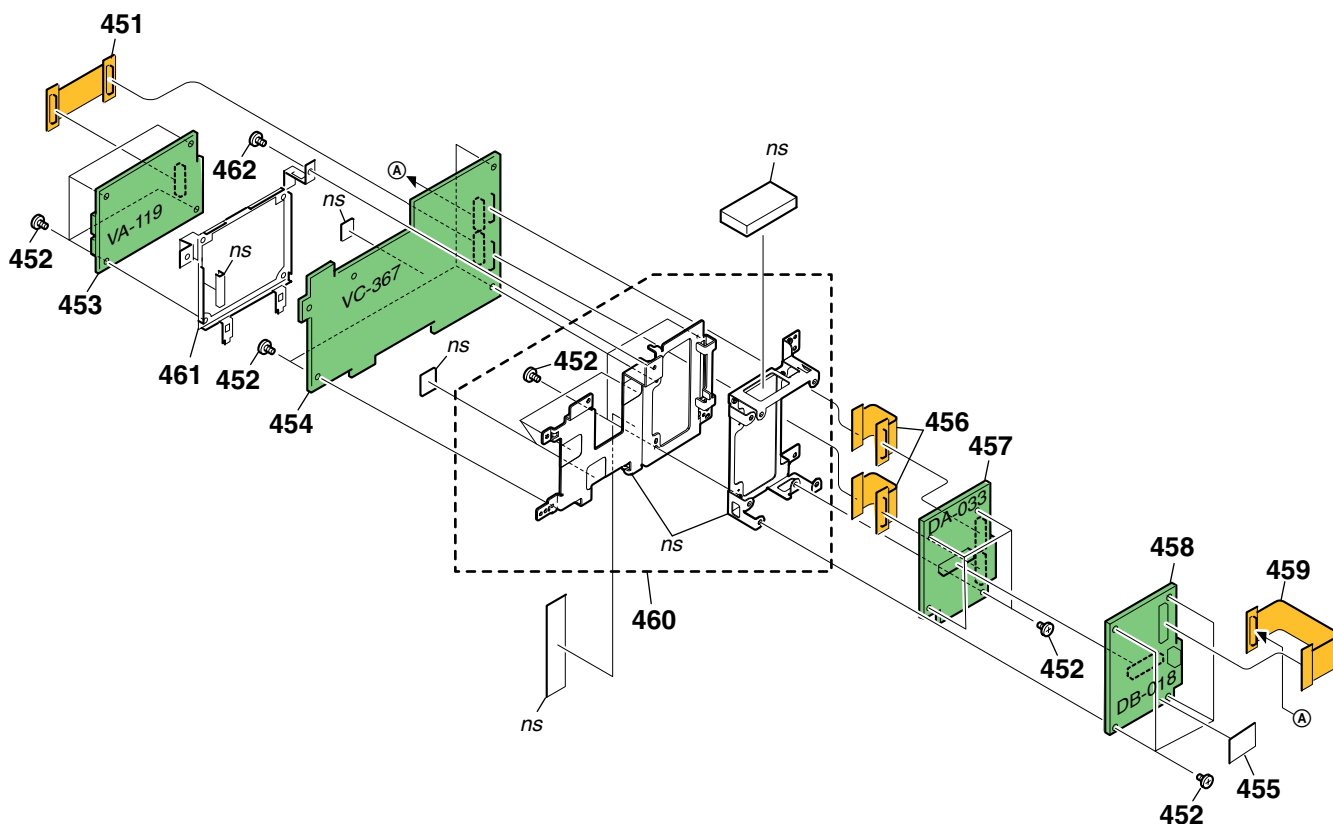


Ref. No.	Part No.	Description	Ref. No.	Part No.	Description
401	3-080-202-41	SCREW(M2), LOCK ACE,P2	408	3-080-203-31	SREW (M2), LOCK ACE, P2
402	3-080-202-21	SCREW (M2), LOCK ACE, P2	409	2-546-211-01	SHEET (FP974)
403	1-864-146-11	FP-974 FLEXIBLE BOARD	410	1-864-145-11	FP-972 FLEXIBLE BOARD
404	2-178-776-01	HOLDER (CCD CONNECTOR)	411	2-546-215-01	SHEET (FP972, EMI)
405	2-546-216-01	SHEET (FP974, EMI)	412	X-2023-889-1	CABINET (R (LENS)) D ASSY
406	1-864-272-11	FP-985 FLEXIBLE BOARD	413	2-546-212-01	SHEET (CCD GUARD)
407	2-549-968-01	TAPE (FP974), PROTECTION			

5. REPAIR PARTS LIST

5-1-10. MAIN BOARD SECTION (VA, VC, DA, DB)

ns : not supplied



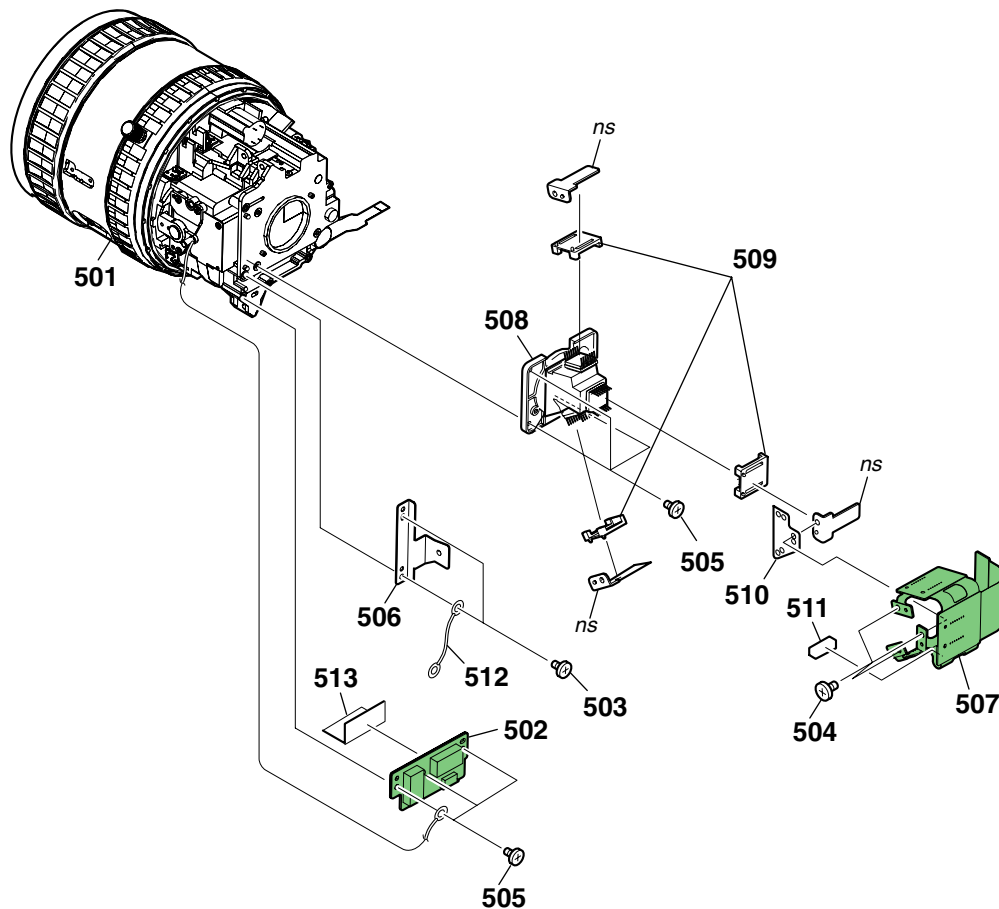
Ref. No.	Part No.	Description
451	A-1074-708-A	FP-971 FLEXIBLE BOARD
452	3-080-202-21	SCREW (M2), LOCK ACE, P2
453	A-1082-309-A	VA-119 BOARD, COMPLETE
454	A-1091-890-A	VC-367 BOARD, COMPLETE (SERVICE)
455	2-586-052-01	SHEET (COIL, EMI)
456	A-1074-710-A	FP-976 FLEXIBLE BOARD

Ref. No.	Part No.	Description
457	A-1081-942-A	DA-033 BOARD, COMPLETE
458	A-1081-943-A	DB-018 BOARD, COMPLETE
459	A-1074-711-A	FP-977 FLEXIBLE BOARD
460	X-2023-303-1	HEAT SINK (VC) ASSY
461	2-178-778-01	CHASSIS (VA)
462	3-080-202-41	SCREW (M2), LOCK ACE, P2

5. REPAIR PARTS LIST

5-1-11. LENS SECTION

ns : not supplied



Ref. No.	Part No.	Description
501	A-1106-565-A	UNIT (B165B) (SERVICE)
502	A-1073-869-A	SE-150 BOARD, COMPLETE
503	3-080-206-21	SCREW, TAPPING, P2
504	3-080-202-21	SCREW (M2), LOCK ACE, P2
505	3-080-204-31	SCREW, TAPPING, P2
506	2-178-777-01	BRACKET (HEAT SINK)
507	A-1073-873-A	CD-522 BOARD, COMPLETE (IC101, IC102 and IC103 are not included in this COMPLETE of CD-522 board.)

Ref. No.	Part No.	Description
508	A-1086-405-A	PRISM ASSY (SERVICE) (INCLUDED 3CCD) (IC101, IC102 and IC103 are included in PRISM assy.)
509	X-2023-307-1	HOLDER (CCD) ASSY
510	2-178-780-01	SHEET (GF)
* 511	3-053-354-01	CUSHION, CD FLEXIBLE
512	1-963-389-11	HARNESS (LS-001)
513	3-060-795-01	TAPE, HARNESS FIXED

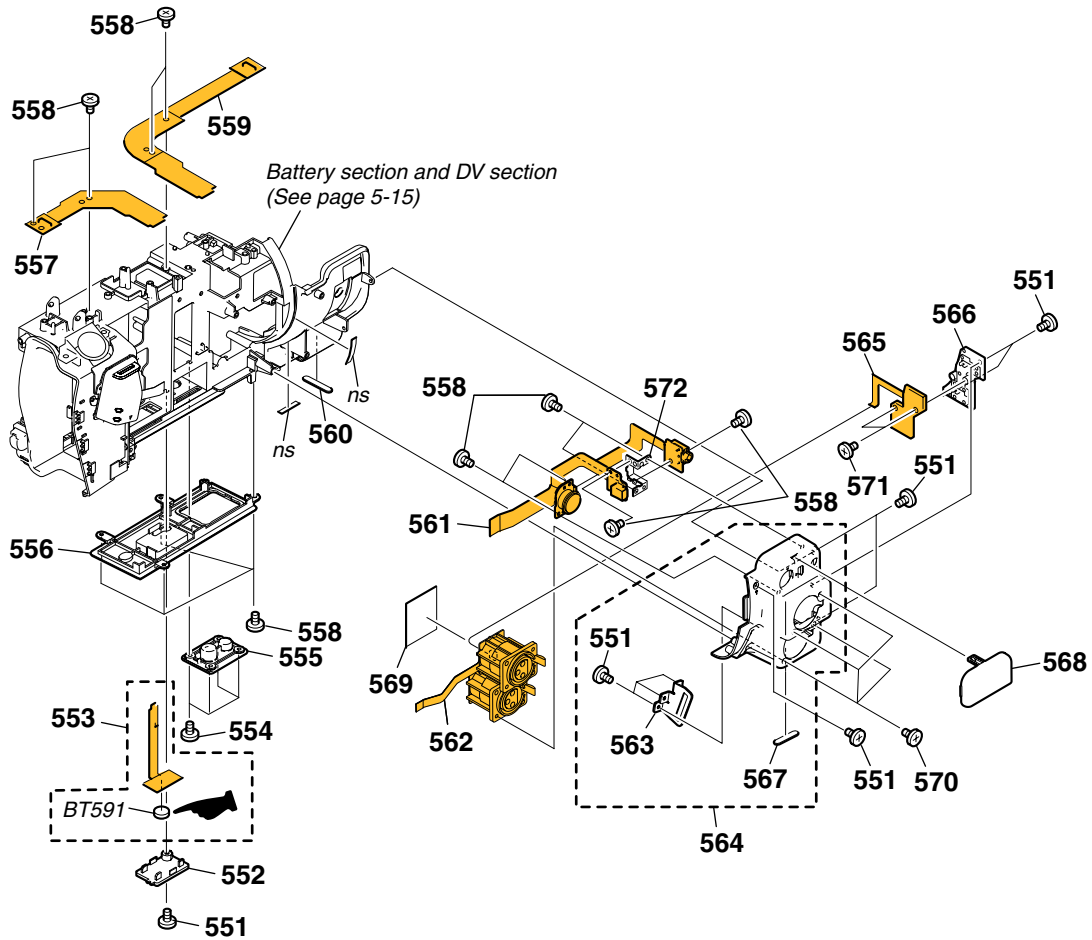
Be sure to read "Precautions upon replacing CCD imager" on page 4-5 when changing the CCD imager.

CCDイメージャの交換時はサービスマニュアル 4-6 ページの
"CCDイメージャ交換時の注意" を必ずお読みください。

5. REPAIR PARTS LIST

5-1-12. TERMINAL CABINET SECTION

ns : not supplied



BT591 (Lithium battery) FP-959 flexible board on the mount position (See page 4-119)

Ref. No.	Part No.	Description
551	3-080-203-31	SCREW (M2), LOCK ACE, P2
552	2-179-100-11	LID (LITHIUM)
553	A-1074-707-A	FP-959 FLEXIBLE BOARD
554	2-342-356-01	SCREW (M2 (ECO, EG))
555	2-178-793-01	BRACKET (TRIPOD)
556	2-178-790-11	PLATE (BOTTOM)
557	A-1074-709-A	FP-975 FLEXIBLE BOARD
558	3-080-202-21	SCREW (M2), LOCK ACE, P2
559	A-1074-713-A	FP-981 FLEXIBLE BOARD
560	2-178-779-01	REG (RUBBER)
561	A-1092-654-A	JK-275 BOARD, COMPLETE
562	A-1074-712-A	FP-978 FLEXIBLE BOARD

Ref. No.	Part No.	Description
563	2-178-799-01	SHEET METAL (FRONT), GRIP
564	X-2023-996-1	CABINET (D) ASSY, TERMINAL
565	1-864-252-21	FP-960 FLEXIBLE BOARD
566	X-2023-997-1	PANEL ASSY, XLR
567	2-178-805-01	FOOT, RUBBER
568	2-189-583-01	COVER (D), TERMINAL
569	2-589-742-01	TAPE, PROTECTION
570	3-061-062-11	BOLT (M2.6)
571	3-080-206-21	SCREW, TAPPING, P2
572	2-189-582-01	SHEET METAL (AV) (D), FITTING
△ BT591	1-756-128-11	BATTERY, LITHIUM (SECONDARY)

CAUTION :
 Danger of explosion if battery is incorrectly replaced.
 Replace only with the same or equivalent type.

注意
 電池の交換は、正しく行わないと破裂する可能性があります。電池を交換する場合には必ず同じ型名の電池又は同等品と交換してください。

The components identified by mark △ or dotted line with mark △ are critical for safety.
 Replace only with part number specified.

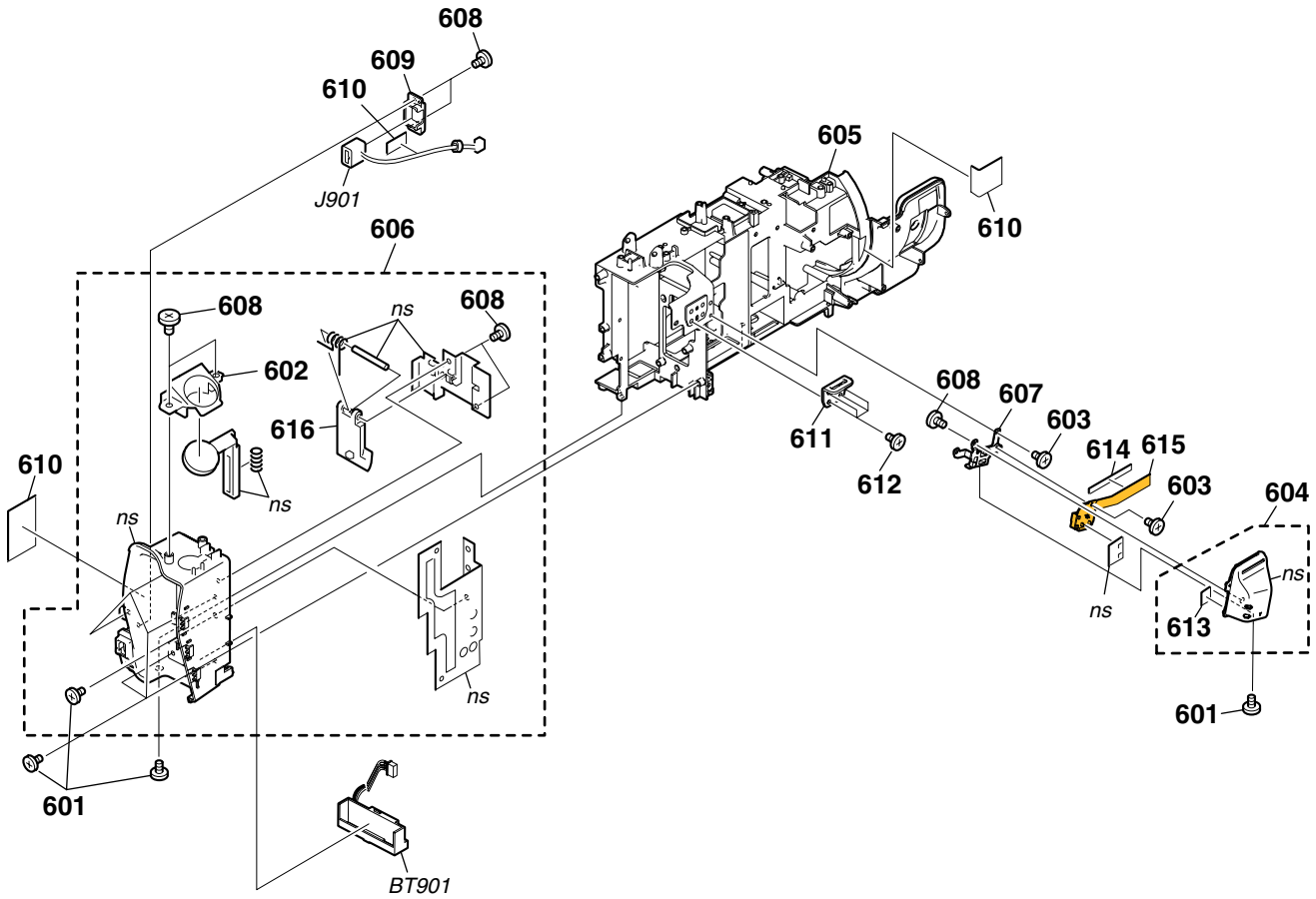
Les composants identifiés par une marque △ sont critiques pour la sécurité.
 Ne les remplacer que par une pièce portant le numéro spécifié.

△印の部品、または△印付の点線で囲まれた部品は、安全性を維持するために、重要な部品です。
 従って交換時は、必ず指定の部品を使用してください。

5. REPAIR PARTS LIST

5-1-13. BATTERY SECTION AND DV SECTION

ns : not supplied



Ref. No.	Part No.	Description
601	3-080-203-31	SREW (M2), LOCK ACE, P2
602	2-179-108-11	COVER (RELEASE BUTTON)
603	3-080-202-21	SCREW (M2), LOCK ACE, P2
604	X-2023-941-1	CABINET (DV) ASSY (D)
605	2-178-784-11	CHASSIS (CENTER)
606	X-2023-947-1	PANEL ASSY (D), BATTERY
607	2-178-794-01	SHEET METAL (DV), FITTING
608	3-080-206-21	SCREW, TAPPING, P2
609	2-179-101-01	HOLDER (DC IN), TERMINAL

Ref. No.	Part No.	Description
610	3-060-795-01	TAPE, HARNESS FIXED
611	2-178-785-01	SHEET METAL (REAR), STRAP
612	7-627-556-37	SCREW, PRECISION +P2.6X4 TYPE 1
613	2-349-594-01	SHEET, DV GUARD
614	2-547-279-01	SPACER (DV)
615	A-1073-874-A	FP-964 FLEXIBLE BOARD
616	3-060-595-01	CLAW, BT LOCK
△ BT901	1-694-411-11	TERMINAL BOARD, BATTERY
△ J901	1-818-960-11	CONNECTOR, DC-IN

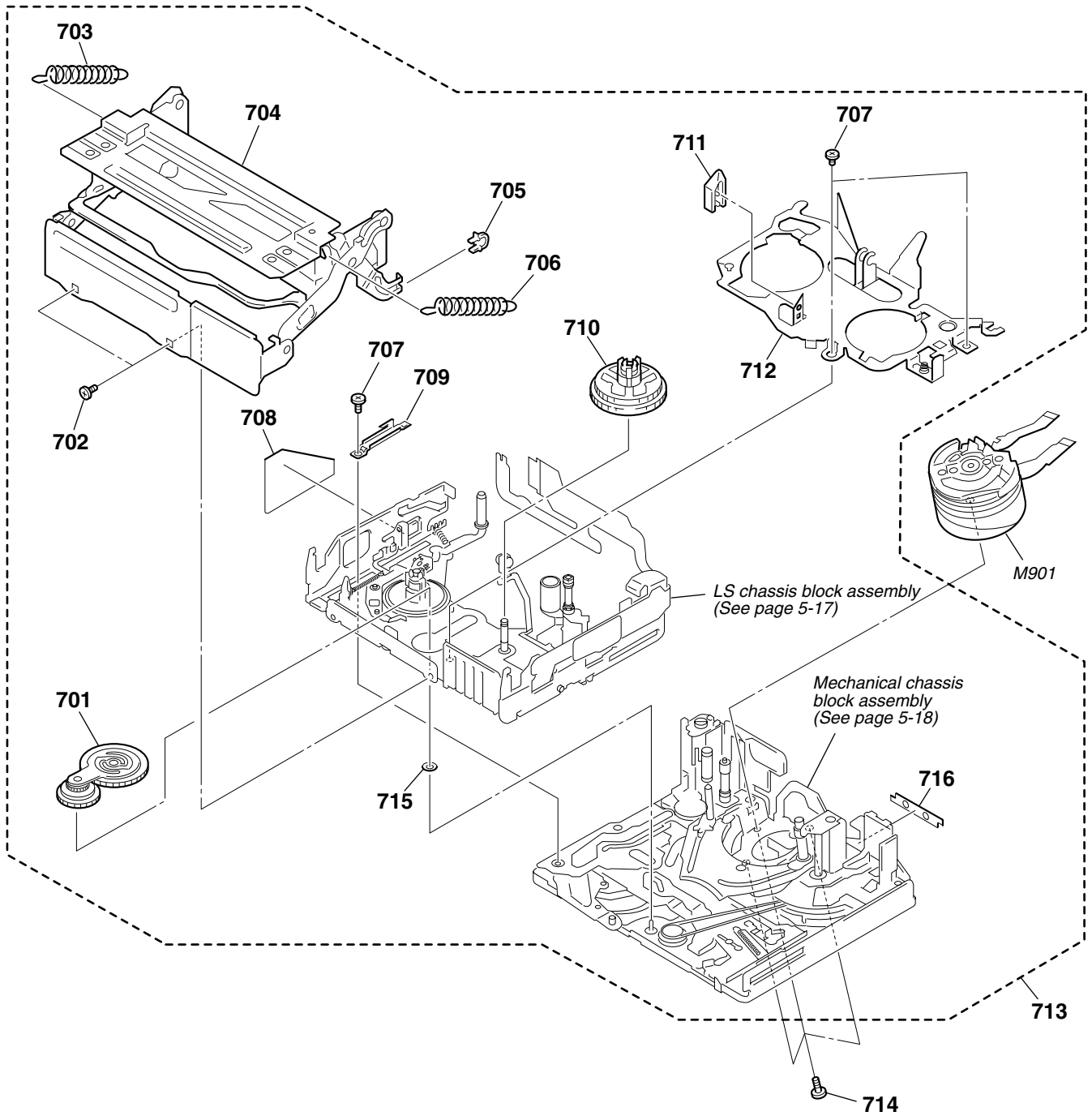
The components identified by mark △ or dotted line with mark △ are critical for safety.
Replace only with part number specified.

Les composants identifiés par une marque △ sont critiques pour la sécurité.
Ne les remplacer que par une pièce portant le numéro spécifié.

△印の部品、または△印付の点線で囲まれた部品は、安全性を維持するために、重要な部品です。
従って交換時は、必ず指定の部品を使用してください。

5. REPAIR PARTS LIST

5-1-14. MECHANISM DECK OVERALL (Z311)



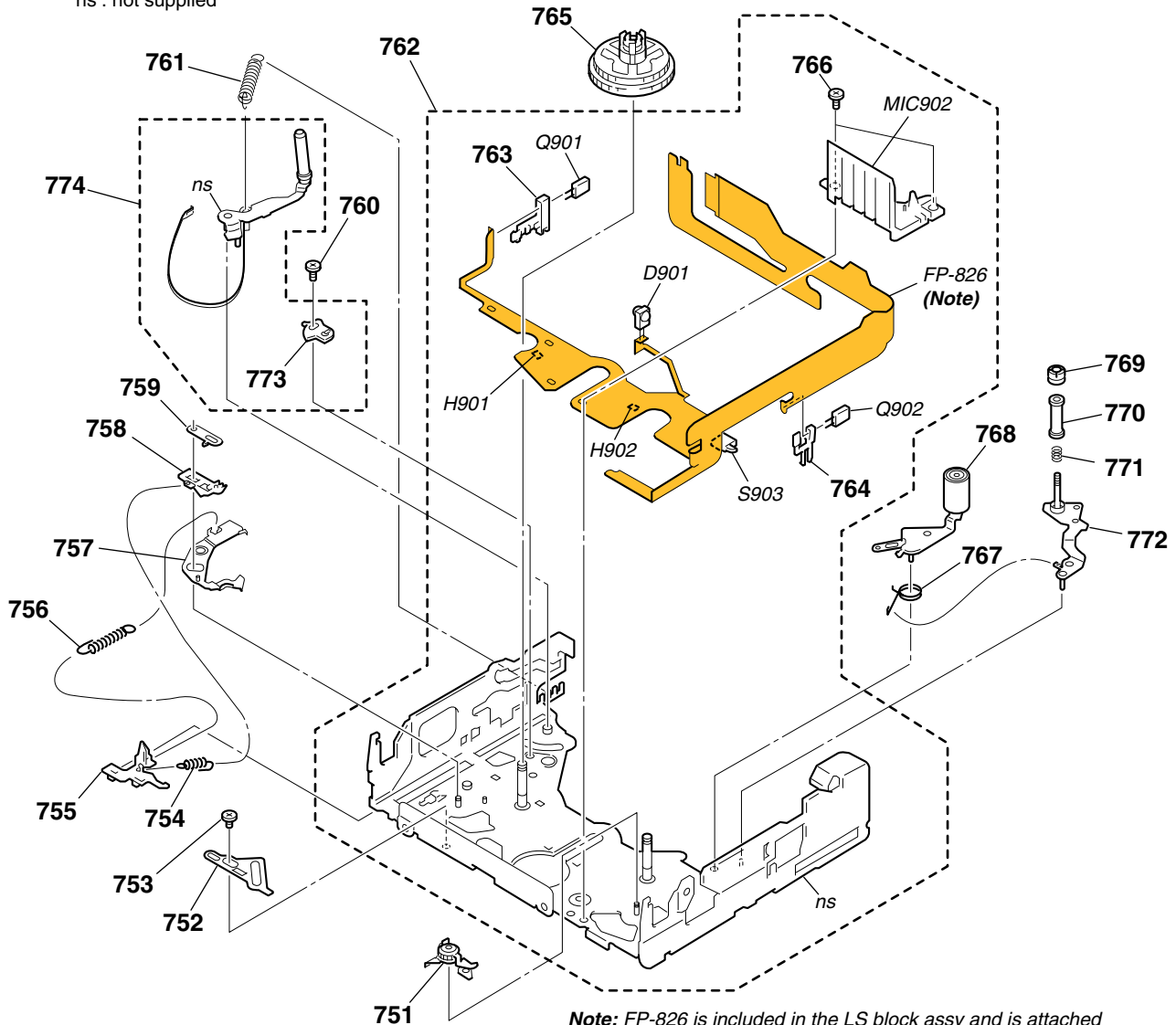
Ref. No.	Part No.	Description
701	X-3952-938-6	GEAR ASSY, GOOSENECK
702	3-075-097-11	SCREW (M1.4X1.4), SPECIAL HEAD
703	3-079-206-02	SPRING (POP UP S), TXTENSION
704	X-2024-802-1	CASSETTE COMPARTMENT ASSY
705	3-079-367-01	DAMPER, CASSETTE COMPARTMENT
706	3-079-215-02	SPRING (POP UP T), EXTENSION
707	3-085-330-01	SCREW, SPECIAL
708	3-080-545-01	COVER, SENSOR S
709	3-079-364-01	RETAINER, LS GUIDE

Ref. No.	Part No.	Description
710	X-3952-937-1	TABLE ASSY, T REEL
711	3-079-366-01	RELEASE, REEL LOCK
712	X-3953-257-1	PLATE ASSY, RETAINER
713	A-1075-360-A	MD (Z300) SUB ASSY (Y)
714	3-097-741-02	SCREW, DRUM FIXING
715	3-748-682-01	WASHER, T
716	3-087-881-01	SHEET, ADHESIVE, FLEXIBLE
M901	A-1082-202-A	DRUM (DEH-30F-R)

5. REPAIR PARTS LIST

5-1-15. LS CHASSIS BLOCK ASSEMBLY

ns : not supplied



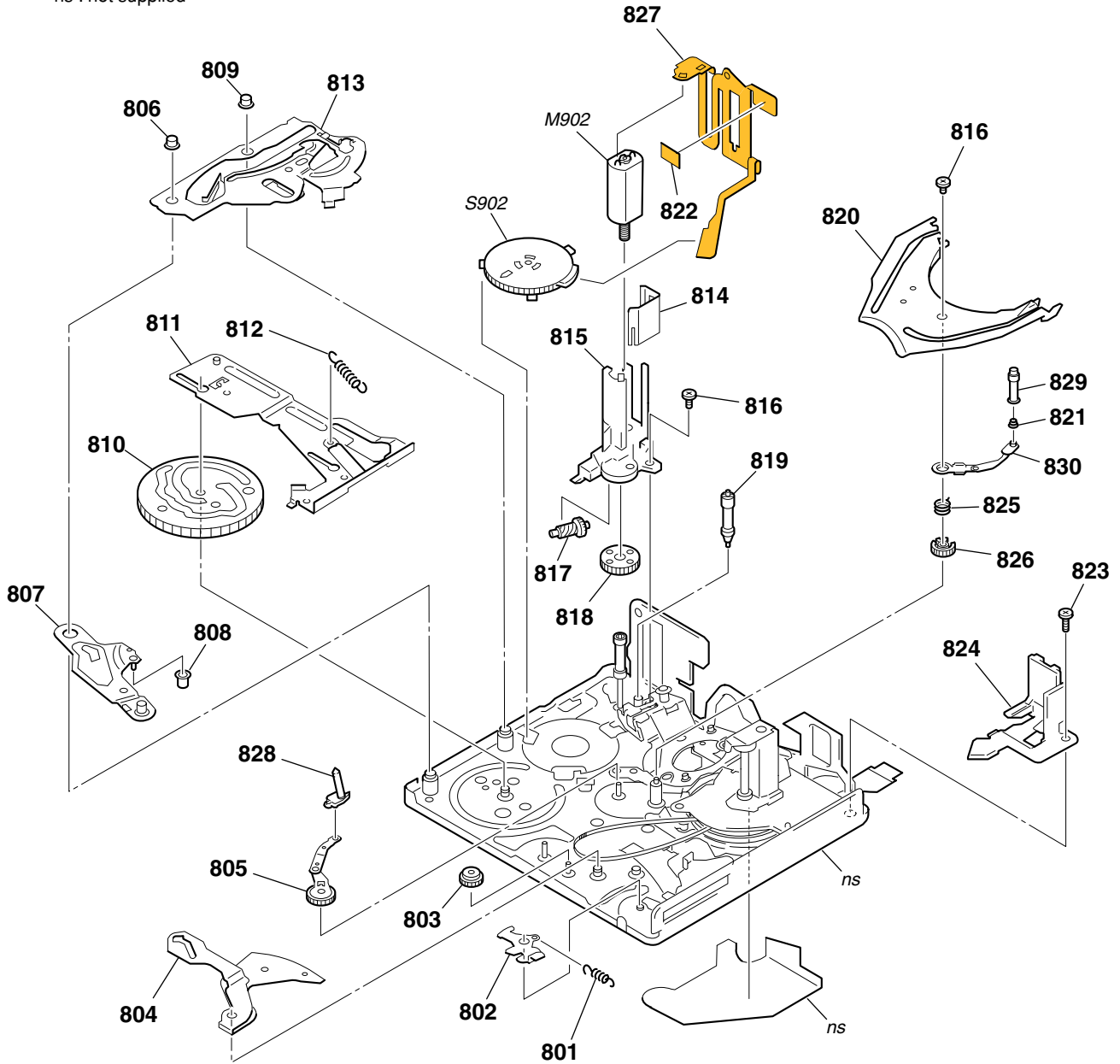
Note: FP-826 is included in the LS block assy and is attached to chassis by hot-press.
Because installation of FP-826 requires a very high accuracy, FP-826 is not supplied as an independent service parts.

Ref. No.	Part No.	Description	Ref. No.	Part No.	Description
751	A-7095-663-F	BRAKE (T) BLOCK ASSY	767	3-079-243-02	SPRING (PINCH RETURN), TORSION
752	3-079-241-01	PLATE, LS CAM	768	X-3952-934-1	ARM ASSY, PINCH
753	3-075-097-11	SCREW (M1.4X1.4), SPECIAL HEAD	769	3-052-062-02	NUT, TG7
754	3-079-246-01	SPRING (RELEASE RACK), EXTENSION	770	3-079-219-02	TG7
755	3-079-248-01	POSITIONING (S), CASSETTE	771	3-081-591-01	SPRING, COMPRESSION (TG7)
756	3-079-244-01	SPRING (ULE), EXTENSION	772	X-3952-935-3	ARM ASSY, TG7
757	X-3952-932-1	BRAKE ASSY, ULE	773	3-079-237-01	ADJUSTOR, BAND
758	3-079-245-01	RACK (S), RELEASE	774	A-7095-403-B	TG7 ARM BLOCK ASSY
759	3-079-247-01	BRAKE (S)	D901	6-500-652-01	DIODE GL453SE0000F (TAPE LED)
760	3-059-090-11	SCREW (M1.4X2.5), SPECIAL HEAD	H901	8-719-067-74	ELEMENT, HOLE HW-105A-CDE-T (S REEL)
761	2-187-714-01	SPRING, TENSION	H902	8-719-067-74	ELEMENT, HOLE HW-105A-CDE-T (T REEL)
762	A-7095-951-A	LS BLOCK ASSY	MIC902	1-817-175-12	PIN, CONNECTOR (WITH DETECTION SWITCH)
763	3-079-267-01	HOLDER (S), SENSOR	Q901	6-550-672-01	TRANSISTOR PT4850FJE00F (TAPE END)
764	3-079-268-01	HOLDER (T), SENSOR	Q902	6-550-672-01	TRANSISTOR PT4850FJE00F (TAPE TOP)
765	X-3952-936-2	TABLE ASSY, S REEL	S903	1-529-566-51	SWITCH, PUSH (1 KEY) (C.C.DOWN)
766	3-085-330-01	SCREW, SPECIAL			

5. REPAIR PARTS LIST

5-1-16. MECHANICAL CHASSIS BLOCK ASSEMBLY

ns : not supplied



Ref. No.	Part No.	Description
801	3-079-314-01	SPRING (EJ), EXTENSION
802	3-079-327-01	ARM, EJ
803	3-079-323-01	GEAR, CONVERSION
804	3-079-324-01	ARM, GL DRIVING
805	X-3952-928-1	GL (S) ASSY
806	3-079-315-01	ROLLER (S1), LS GUIDE
807	X-3952-925-1	ARM ASSY, LS
808	3-079-320-01	ROLLER, LS
809	3-079-316-01	ROLLER (S2), LS GUIDE
810	3-079-319-01	GEAR, CAM
811	X-3954-274-2	SLIDER ASSY (N), M
812	3-079-321-02	SPRING (PINCH), EXTENSION
813	X-3954-273-3	PLATE ASSY (N), TG2 CAM
814	3-079-312-01	SHIELD, MOTOR
815	3-079-307-02	HOLDER, MOTOR
816	3-085-330-01	SCREW, SPECIAL

Ref. No.	Part No.	Description
817	3-079-308-01	SHAFT, WORM
818	3-079-309-01	GEAR, DECELERATION
819	X-3952-942-2	ROLLER ASSY, TG3
820	3-079-325-01	RAIL, GUIDE
821	3-079-295-02	SPRING, TG5
822	1-677-049-11	FP-228 FLEXIBLE BOARD (DEW SENSOR)
823	3-079-328-01	SCREW (M1.4), SPECIAL HEAD
824	3-079-326-02	SUPPORT, TG7
825	3-079-301-01	SPRING (GLT), TORSION
826	3-079-298-01	GEAR (T), GL
827	1-686-798-11	FP-467 FLEXIBLE BOARD
828	X-3952-927-2	COASTER (S) ASSY
829	X-3952-930-5	ROLLER ASSY, TG5
830	X-3952-929-1	COASTER (T) ASSY
M902	A-7095-396-A	MOTOR BLOCK ASSY, L (LOADING)
S902	1-477-679-11	ROTARY, ENCODER (MODE SWITCH)

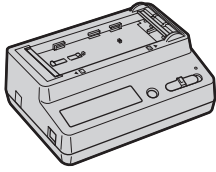
5. REPAIR PARTS LIST

• EXCEPT J MODEL

to J MODEL

Checking supplied accessories.

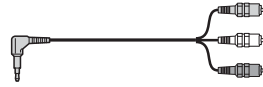
Make sure that the following accessories are supplied with your camcorder.



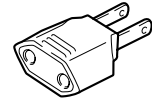
AC adaptor/charger (1)
 ▲ 1-418-821-32
 (US, CND, E (Z1N) model)
 AC adaptor/charger (1)
 ▲ 1-418-821-44
 (AEP, E (Z1P), CH model)



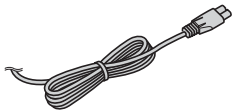
Large eyecup (1)
 2-179-414-01



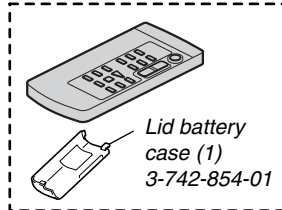
A/V connecting cable (1)
 1-824-097-11



2-pin conversion adaptor (1)
 (AEP model)
 1-569-008-21



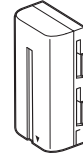
Power cord (Main lead)(1)
 (US, CND, E (Z1N) model)
 ▲ 1-830-405-11
 Power cord (Main lead)(1)
 (AEP, E (Z1P) model)
 ▲ 1-824-910-11
 Power cord (Main lead)(1)
 (CH model)
 ▲ 1-782-476-13



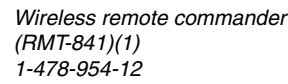
Lid battery case (1)
 3-742-854-01



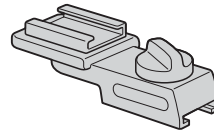
Component video cable (1)
 1-829-414-21



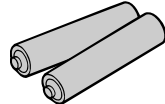
Rechargeable battery pack
 (NP-F570)(1)
 (not supplied)



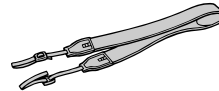
Wireless remote commander
 (RMT-841)(1)
 1-478-954-12



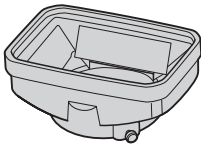
Shoe adaptor (1)
 X-2025-370-1



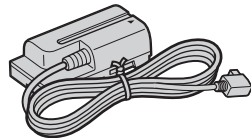
R6 (size AA) batteries
 for the Remote
 Commander (2)
 (not supplied)



Shoulder strap (1)
 2-021-016-01



Lens hood (1)
 2-186-430-01



Connecting cord (DK-415) (1)
 1-782-361-14

- Abbreviation
- CND : Canadian model
- CH : Chinese model

Other accessories

- 2-514-606-11 MANUAL, INSTRUCTION (ENGLISH)(Z1U/Z1N)
- 2-514-606-21 MANUAL, INSTRUCTION (FRENCH)(Z1U)
- 2-514-607-11 MANUAL, INSTRUCTION (ENGLISH)(Z1P/Z1E)
- 2-514-607-21 MANUAL, INSTRUCTION (FRENCH)(Z1E)
- 2-514-607-31 MANUAL, INSTRUCTION (SPANISH)(Z1E)
- 2-514-607-41 MANUAL, INSTRUCTION (ITALIAN)(Z1E)
- 2-514-607-51 MANUAL, INSTRUCTION (GERMAN)(Z1E)
- 2-514-607-61 MANUAL, INSTRUCTION (SIMPLIFIED CHINESE)(Z1C)

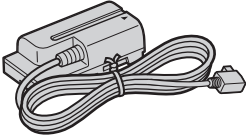
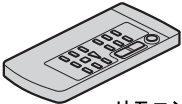
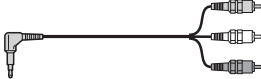
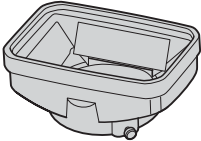
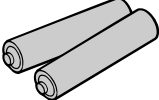
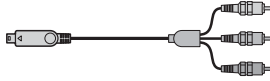

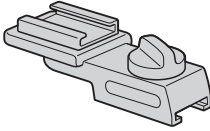
Note :
 The components identified by mark ▲ or dotted line with mark ▲ are critical for safety. Replace only with part number specified.

Note :
 Les composants identifiés par une marque ▲ sont critiques pour la sécurité. Ne les remplacer que par une pièce portant le numéro spécifié.

5. REPAIR PARTS LIST

• J MODEL

付属品

 <p>接続コード (DK-415) (1) 1-782-361-14</p>	<div style="border: 1px dashed black; padding: 5px;">  <p>リモコン電池蓋 (3-742-854-01)</p> </div> <p>ワイヤレスリモコン (1) (RMT-841) 1-478-954-12</p>	 <p>AV接続ケーブル (1) 1-824-097-11</p>
 <p>レンズキャップ付きフード(1) 2-186-430-01</p>	 <p>単三型乾電池 (リモコン用)(1) (供給せず)</p>	 <p>コンポーネントビデオケーブル (1) 1-829-414-21</p>
 <p>大型アイカップ (1) 2-179-414-01</p>		 <p>シューアダプター (1) X-2025-370-1</p>
		<p>クリーニングカセット (DVM-4CLD J)(1) 8-883-121-64</p>
<p>図面 番号</p>	<p>部品コード 部 品 名</p> <p>2-514-606-01 取扱説明書</p>	

Viditec

Humberto 1° 2889 - C1231ACE - Bs As, Argentina
Tel: +54 11 4122-1200 Fax: +54 11 4308-5493

ingenieria@viditec.com.ar
viditec.com