

HVR-Z5C/Z5E/Z5J/Z5N/Z5P/Z5U

RMT-831

SERVICE MANUAL

Ver. 1.0 2008.11

Revision History

US Model
Canadian Model
AEP Model
E Model
Chinese Model
Japanese Model



N MECHANISM (MDX-N221)

Photo: HVR-Z5J

Link

• SPECIFICATIONS	• BLOCK DIAGRAMS	• REPAIR PARTS LIST
• MODEL INFORMATION TABLE	• FRAME SCHEMATIC DIAGRAMS	• ADJUSTMENTS
• SERVICE NOTE	• SCHEMATIC DIAGRAMS	• INSTRUCTION MANUAL
• DISASSEMBLY	• PRINTED WIRING BOARDS	

The components identified by mark \triangle or dotted line with mark \triangle are critical for safety. Replace only with part number specified.

Les composants identifiés par une marque \triangle sont critiques pour la sécurité. Ne les remplacer que par une pièce portant le numéro spécifié.

Viditec


Humberto 1° 2889 - C1231ACE - Bs As, Argentina
Tel: +54 11 4122-1200 Fax: +54 11 4308-5493
ingenieria@viditec.com.ar
viditec.com

Mini DV Digital Video Cassette

DIGITAL HD VIDEO CAMERA RECORDER

SONY®

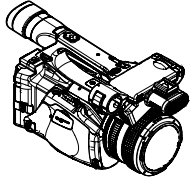
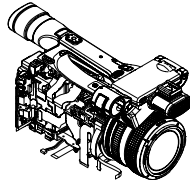
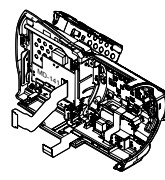
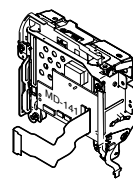
5. REPAIR PARTS LIST (1/2)

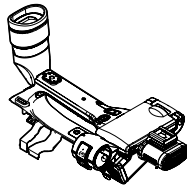
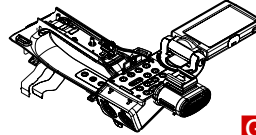
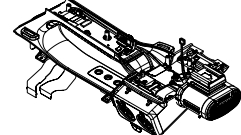
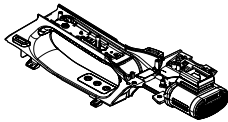
 TO (2/2) 

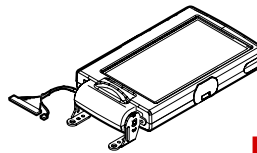
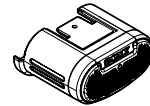
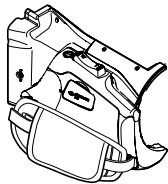
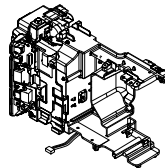
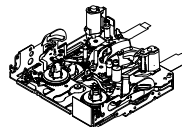
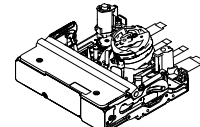
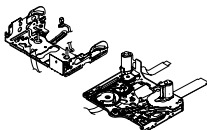
NOTE: Characters **A** to **Z** of the electrical parts list indicate location of exploded views in which the desired part is shown.

Link

EXPLODED VIEWS


A
OVERALL SECTION-1

B
OVERALL SECTION-2

C
CABINET (R) SECTION

D
MD SECTION

E
LENS SECTION

F
HANDLE SECTION-1

G
HANDLE SECTION-2

H
HANDLE SECTION-3

I
HANDLE SECTION-4

J
EVF SECTION

K
LCD SECTION

L
MICROPHONE SECTION

M
CABINET (L) SECTION

N
BT PANEL SECTION

O
MECHANISM DECK SECTION

P
LS/MECHANICAL CHASSIS BLOCK ASSEMBLY-1

Q
LS/MECHANICAL CHASSIS BLOCK ASSEMBLY-2

5. REPAIR PARTS LIST (2/2)

 TO (1/2)

NOTE: Characters **A** to **Z** of the electrical parts list indicate location of exploded views in which the desired part is shown.

Link

ELECTRICAL PARTS LIST

ACCESSORIES

• AS-060 BOARD I	• FP-971 FLEXIBLE BOARD M	• HT-002 BOARD K
• CK-204 BOARD C	• FP-972 FLEXIBLE BOARD N	• JK-376 BOARD N
• CM-097 BOARD E	• FP-973 FLEXIBLE BOARD A	• KY-105 BOARD G
• CM-104 BOARD E	• FP-974 FLEXIBLE BOARD J	• MA-454 BOARD L
• FP-031 FLEXIBLE BOARD O	• FP-975 FLEXIBLE BOARD L	• MD-141 BOARD D
• FP-032 FLEXIBLE BOARD O	• FP-981 FLEXIBLE BOARD I	• MS-405 BOARD M
• FP-228 FLEXIBLE BOARD Q	• FP-982 FLEXIBLE BOARD I	• PD-372 BOARD K
• FP-776 FLEXIBLE BOARD J	• FP-983 FLEXIBLE BOARD D	• PI-029 BOARD G
• FP-965 FLEXIBLE BOARD N	• GP-025 BOARD H	• VC-543 BOARD A
• FP-966 FLEXIBLE BOARD G	• GY-014 BOARD E	• VF-178 BOARD J
• FP-967 FLEXIBLE BOARD H	• HP-153 BOARD N	• XL-010 BOARD H
• FP-969 FLEXIBLE BOARD D		

5. REPAIR PARTS LIST

5. REPAIR PARTS LIST

(ENGLISH)

NOTE:

- -XX, -X mean standardized parts, so they may have some differences from the original one.
- Items marked "*" are not stocked since they are seldom required for routine service. Some delay should be anticipated when ordering these items.
- The mechanical parts with no reference number in the exploded views are not supplied.
- Due to standardization, replacements in the parts list may be different from the parts specified in the diagrams or the components used on the set.
- CAPACITORS:
uF: μ F
- COILS
uH: μ H
- RESISTORS
All resistors are in ohms.
METAL: metal-film resistor
METAL OXIDE: Metal Oxide-film resistor
F: nonflammable
- SEMICONDUCTORS
In each case, u: μ , for example:
uA...: μ A..., uPA..., μ PA...,
uPB..., μ PB..., uPC..., μ PC...,
uPD..., μ PD...

When indicating parts by reference number, please include the board name.

The components identified by mark \triangle or dotted line with mark \triangle are critical for safety. Replace only with part number specified.

Les composants identifiés par une marque \triangle sont critiques pour la sécurité. Ne les remplacer que par une pièce portant le numéro spécifié.

(JAPANESE)

【使用上の注意】

- ここに記載されている部品は、補修用部品であるため、回路図及びセットに付いている部品と異なる場合があります。
- -XX, -Xは標準化部品のため、セットに付いている部品と異なる場合があります。
- *印の部品は常備在庫していません。
- コンデンサの単位でuFは μ Fを示します。
- 抵抗の単位は省略してあります。
金 被：金属被膜抵抗。
サンキン：酸化金属被膜抵抗。
- インダクタの単位でuHは μ Hを示します。
- 半導体の名称でuA..., uPA..., uPB..., uPC..., uPD...等はそれぞれ A..., μ PA..., μ PB..., μ PC..., μ PD...を示します。

お願い
図面番号で部品を指定するときは基板名又はブロックを併せて指定してください。

\triangle 印の部品、または \triangle 印付の点線で囲まれた部品は、安全性を維持するために、重要な部品です。従って交換時は必ず指定の部品を使用してください。

- Abbreviation
CH : Chinese model
CND : Canadian model
J : Japanese model

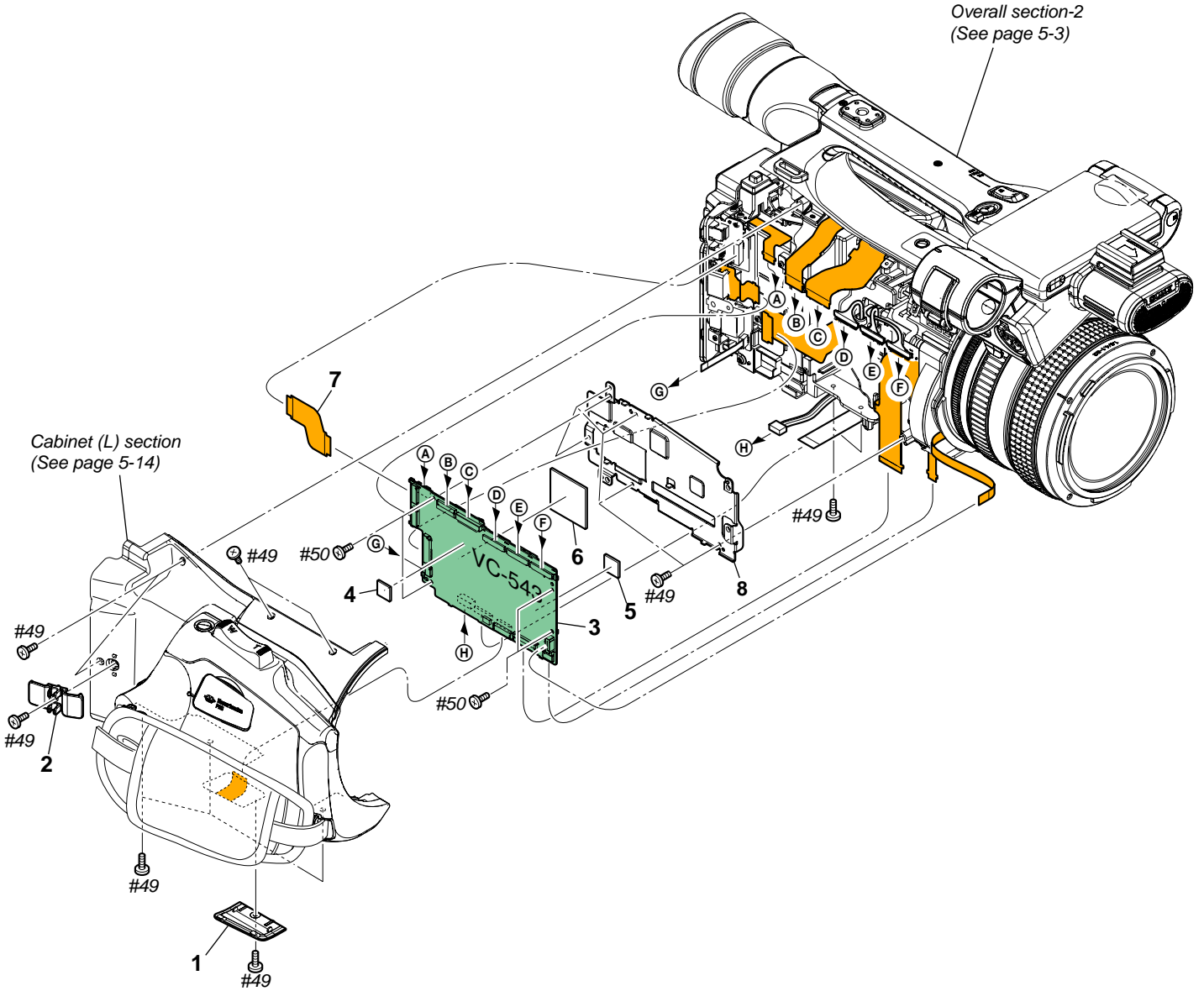
5. REPAIR PARTS LIST

5-1. EXPLODED VIEWS

DISASSEMBLY

HARDWARE LIST

5-1-1. OVERALL SECTION-1



Ref. No.	Part No.	Description
1	4-119-235-11	LID, CPC
2	4-131-320-01	CLAMP, AV
3	A-1616-757-A	VC-543 BOARD, COMPLETE (SERVICE) (Z5J/Z5N/Z5U)
3	A-1616-758-A	VC-543 BOARD, COMPLETE (SERVICE) (Z5C/Z5E/Z5P)
4	4-121-128-01	SHEET (VC), ELECTROSTATIC

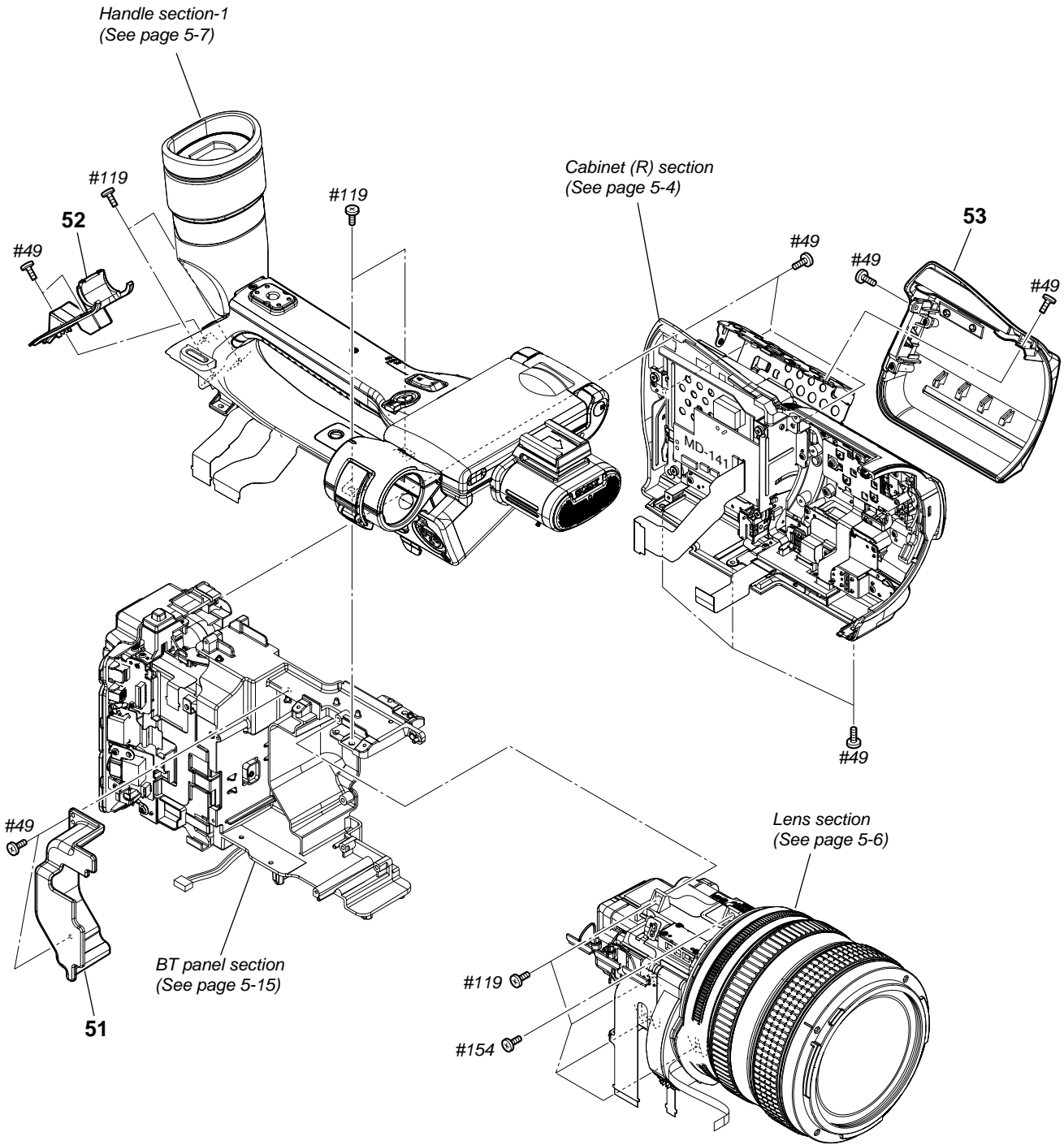
Ref. No.	Part No.	Description
5	4-119-238-01	SHEET (1212), VC RADIATION
6	4-119-362-01	SHEET (2828), LENS RADIATION
7	1-876-944-11	FP-973 FLEXIBLE BOARD
8	4-119-236-01	FRAME, MAIN
#49	2-630-005-31	SCREW (M2), NEW TRUSTER, P2 (Black)
#50	2-891-494-11	SCREW (M2), NEW TRUSTER, P2 (Red)

5. REPAIR PARTS LIST

5-1-2. OVERALL SECTION-2

DISASSEMBLY

HARDWARE LIST



Ref. No.	Part No.	Description
51	4-119-233-01	COVER, CM VENTILATION
52	X-2320-882-1	COVER (93000) ASSY, (REAR)
53	X-2320-890-1	LID (93000) ASSY, CS

Ref. No.	Part No.	Description
#49	2-630-005-31	SCREW (M2), NEW TRUSTER, P2 (Black)
#119	7-627-556-58	SCREW +P 2.6X5 (Black)
#154	7-627-556-97	SCREW, PRECISION +P2.6X8 TYPE 1 (Silver)

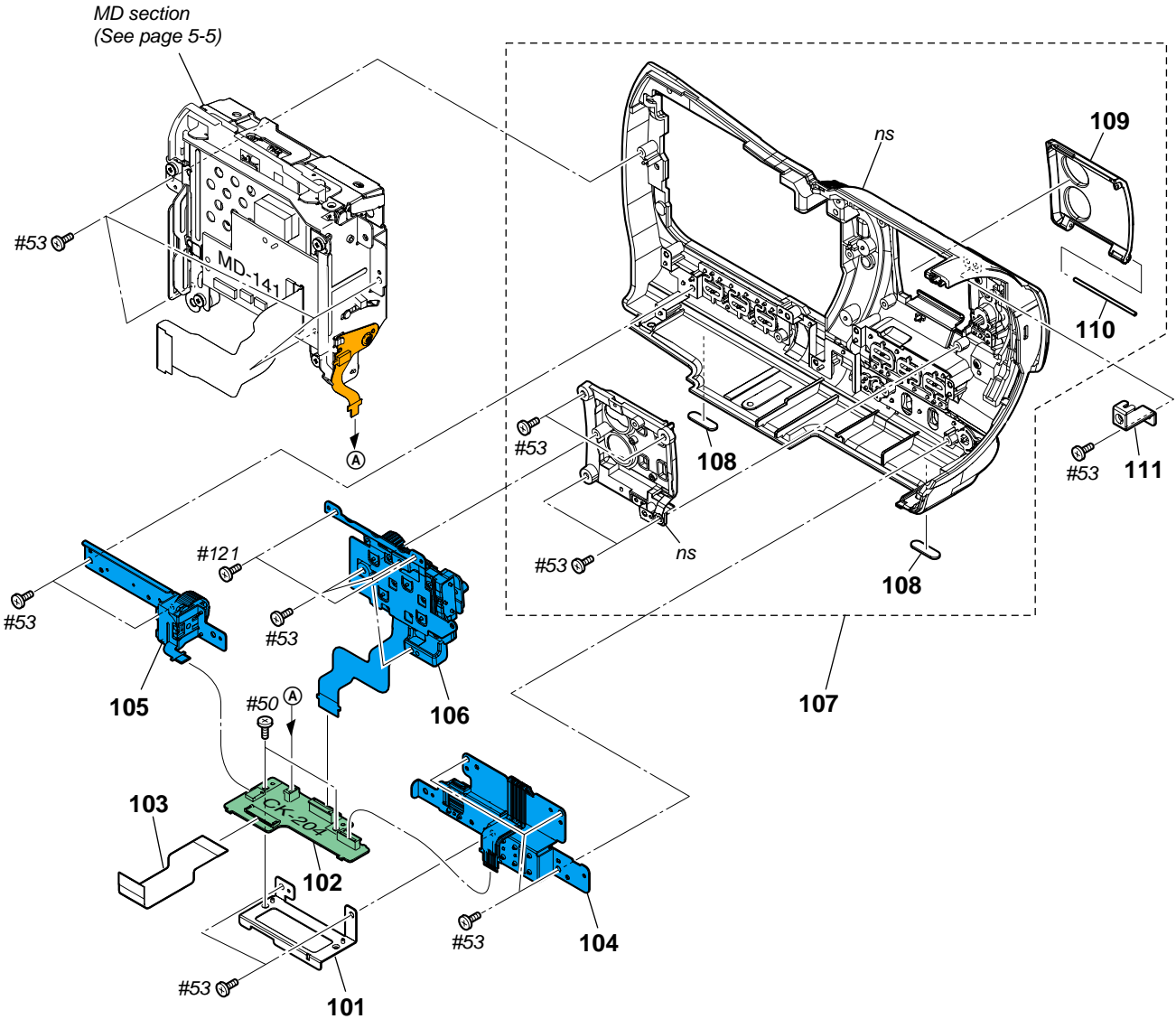
5. REPAIR PARTS LIST

5-1-3. CABINET (R) SECTION

ns: not supplied

DISASSEMBLY

HARDWARE LIST



Ref. No.	Part No.	Description
* 101	4-119-384-01	PLATE, CK FIXED
102	A-1599-835-A	CK-204 BOARD, COMPLETE
103	1-836-005-11	FLEXIBLE FLAT CABLE (FFC-171)
104	1-480-866-11	SWITCH BLOCK, CONTROL (CF24000)
105	1-480-867-11	SWITCH BLOCK, CONTROL (KP24000)
106	1-480-864-11	SWITCH BLOCK, CONTROL (AU93000)
107	X-2320-889-1	CABINET (R (93000)) ASSY

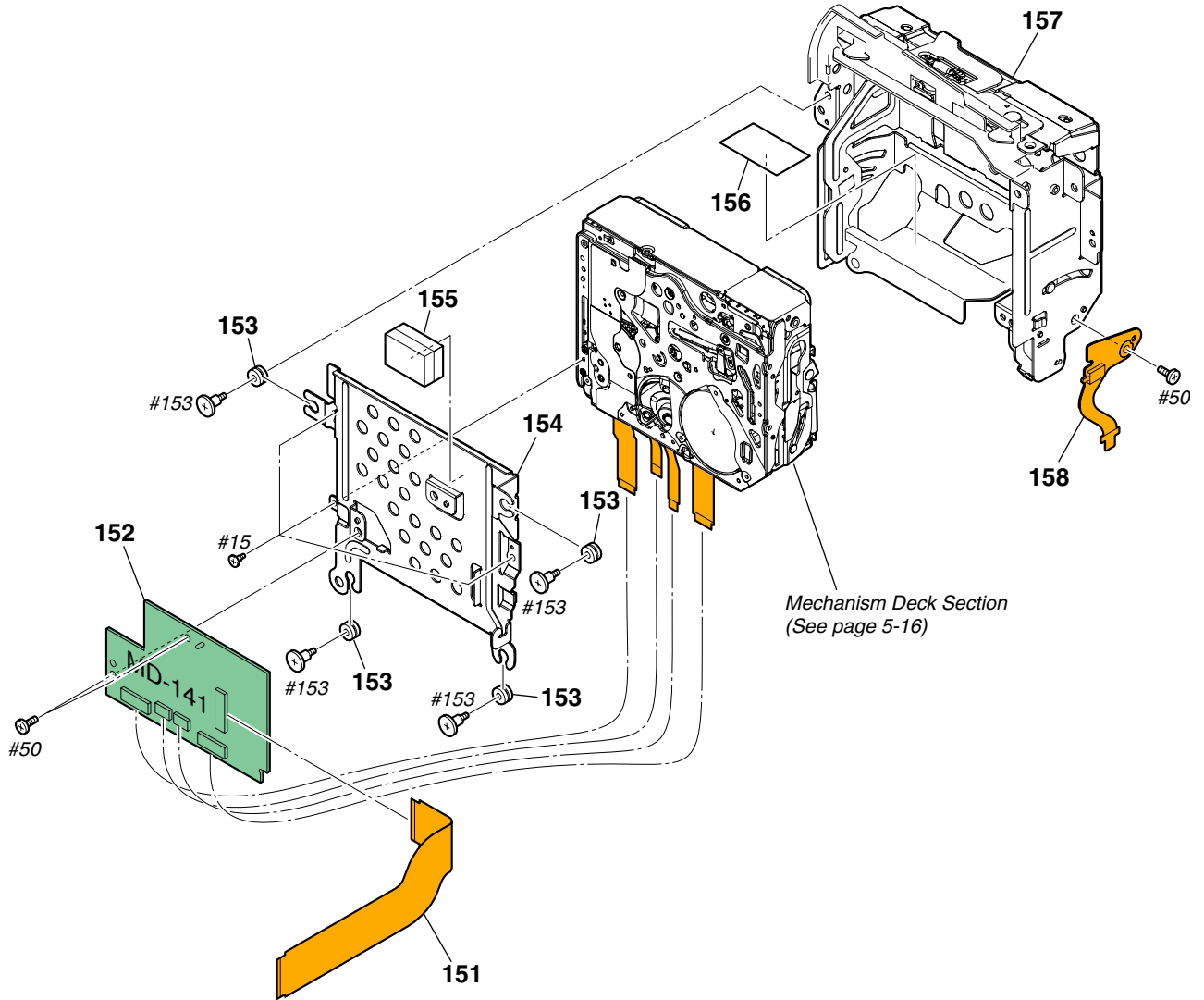
Ref. No.	Part No.	Description
108	2-178-805-01	FOOT, RUBBER
109	4-119-851-01	LID (93000), AL
* 110	4-119-404-01	SHAFT, AL
* 111	4-119-383-01	PLATE, CABINET (R) FIXED
#50	2-891-494-11	SCREW (M2), NEW TRUSTER, P2 (Red)
#53	3-080-206-21	SCREW, TAPPING, P2 (Black)
#121	3-080-205-11	SCREW, TAPPING, P2 (Silver)

5. REPAIR PARTS LIST

5-1-4. MD SECTION

DISASSEMBLY

HARDWARE LIST



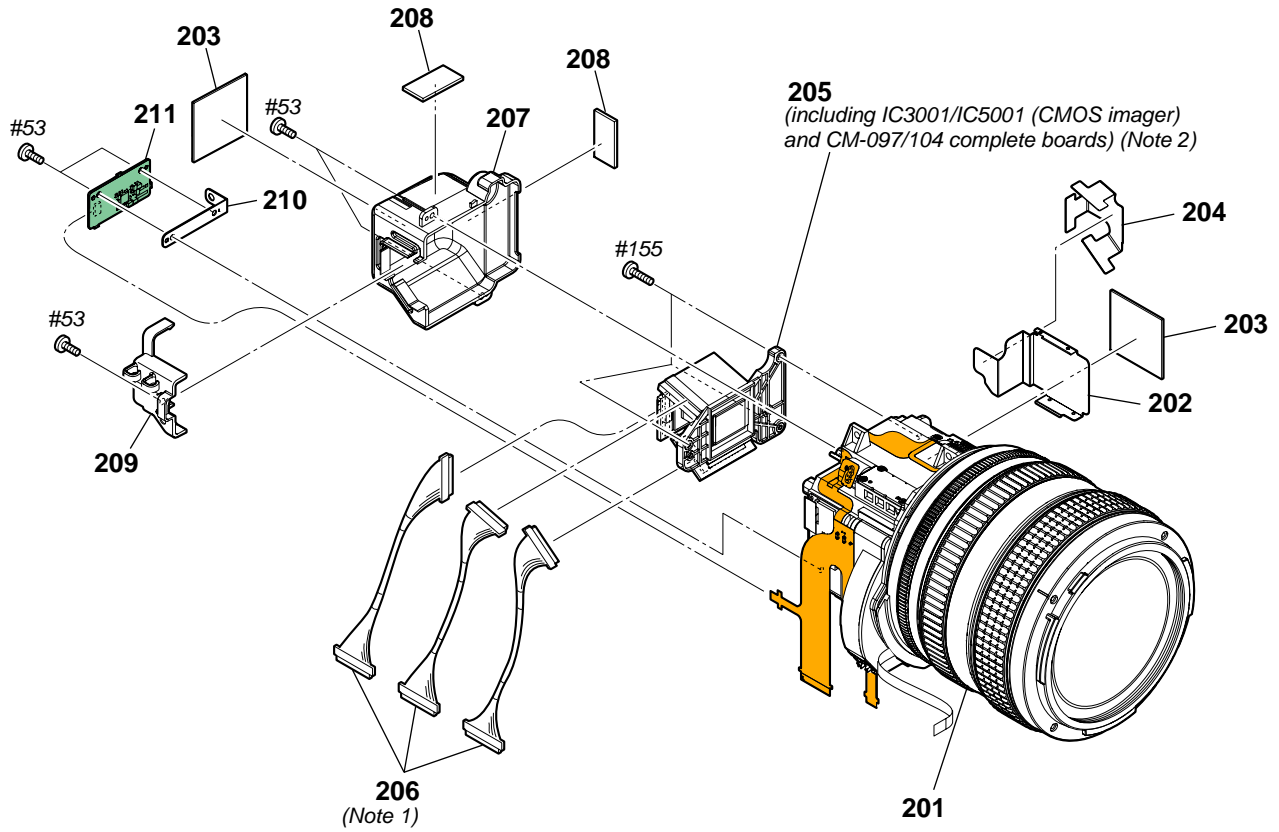
Ref. No.	Part No.	Description
151	1-876-954-11	FP-983 FLEXIBLE BOARD
152	A-1616-572-A	MD-141 BOARD, COMPLETE
153	3-059-809-01	DAMPER, MD
154	X-2320-872-1	FRAME ASSY, MD
* 155	2-673-770-01	GASKET (D)

Ref. No.	Part No.	Description
* 156	4-121-964-01	SHEET, MD INSULATING
157	X-2320-867-1	FRAME ASSY, CS
158	A-1599-833-A	FP-969 FLEXIBLE BOARD, COMPLETE
#15	3-062-214-01	SCREW (M1.4X1.5)
#50	2-891-494-11	SCREW (M2), NEW TRUSTER, P2 (Red)
#153	3-059-718-01	SCREW (M1.4X1.5) (Silver)

5. REPAIR PARTS LIST

5-1-5. LENS SECTION

HARDWARE LIST



Note 1: ハーネス（同軸ケーブル）の交換時は2-1ページの“Note for disconnecting the harness (coaxial cable)”を参照してください。

Note 2: イメージャの交換時は4-4ページの“イメージャ交換時の注意”を必ずお読みください。

Note 1: Refer to page 2-1 “Note for disconnecting the harness (coaxial cable)” when changing the harness (coaxial cable).

Note 2: Be sure to read “Precautions for Replacement of Imager” on page 4-3 when changing the imager.

Ref. No.	Part No.	Description
201	1-788-775-11	LENS, VIDEO CF002
* 202	4-119-361-01	HEAT SINK, LENS
203	4-119-362-01	SHEET (2828), LENS RADIATION
* 204	4-119-360-01	SHEET, CM RADIATION
205	A-1566-526-A	DEVICE (SERVICE), PRISM (including IC3001/IC5001 (CMOS imager) and CM-097/104 complete boards) (Note 2)
206	1-966-281-11	HARNESS (COAXIAL CABLE) (Note 1)

Ref. No.	Part No.	Description
* 207	4-119-357-01	COVER (A), LIGHT INTERCEPTION
208	4-119-356-01	SHEET (1122), LENS RADIATION
* 209	4-119-358-01	COVER (B), LIGHT INTERCEPTION
* 210	4-119-359-01	PLATE, GY GROUND
211	A-1602-003-A	GY-014 BOARD, COMPLETE (SERVICE)
#53	3-080-206-21	SCREW, TAPPING, P2 (Black)
#155	3-080-204-31	SCREW, TAPPING, P2 (Black)

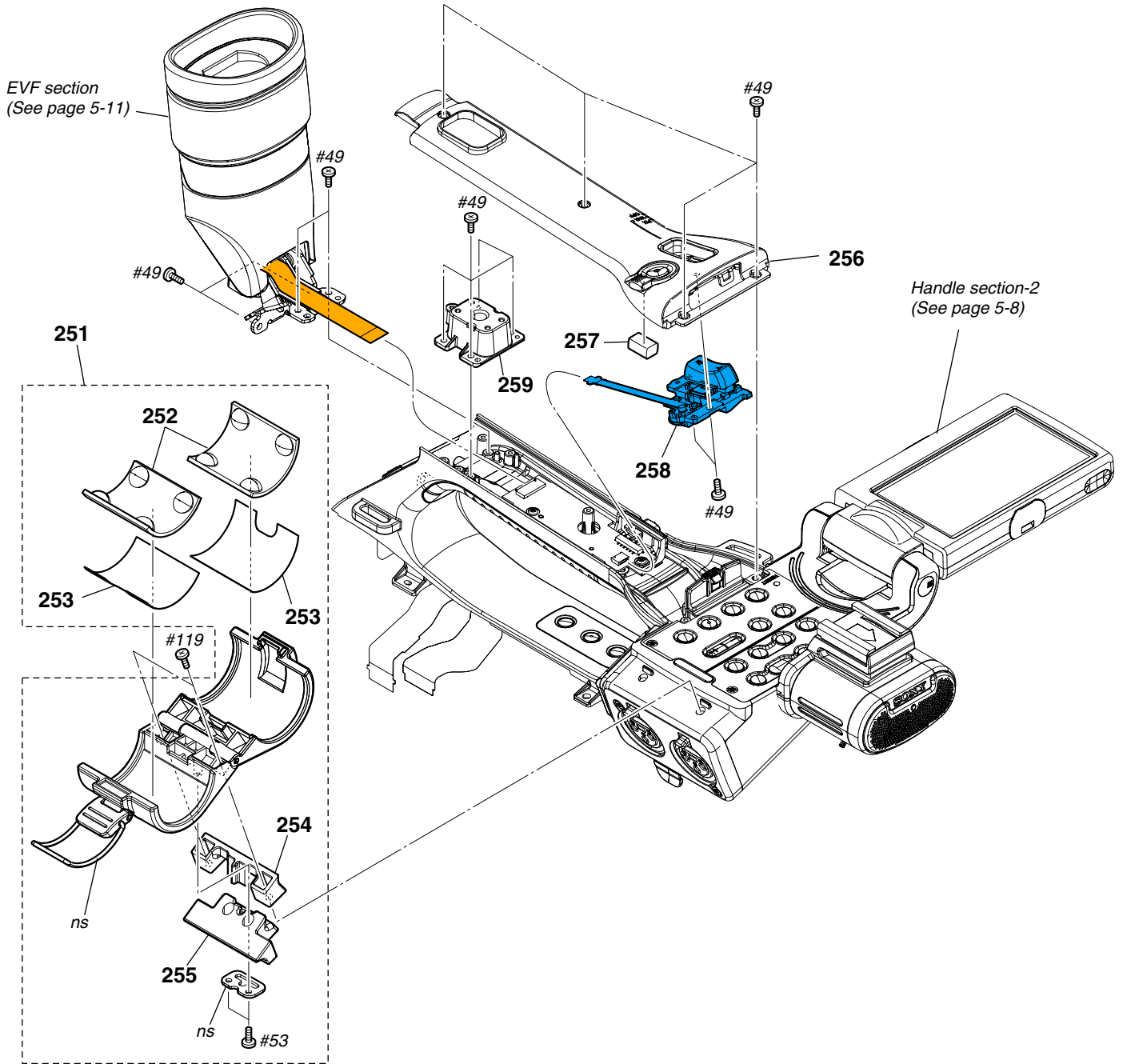
5. REPAIR PARTS LIST

5-1-6. HANDLE SECTION-1

ns: not supplied

DISASSEMBLY

HARDWARE LIST



Ref. No.	Part No.	Description
251	X-2187-986-2	HOLDER ASSY, MICROPHONE
252	3-284-080-01	RUBBER, MICROPHONE
253	3-284-081-01	SHEET, RUBBER ADHESIVE
254	3-284-075-02	COVER, MICROPHONE HOLDER RUBBER
255	3-284-074-01	RUBBER, MICROPHONE HOLDER
256	X-2320-880-1	CABINET (93000) ASSY, (UPPER)

Ref. No.	Part No.	Description
* 257	3-700-682-01	CUSHION (MIC)
258	1-480-298-11	SWITCH BLOCK, CONTROL (GZ92000)
259	3-288-538-01	SHOE, REAR (COLD)
#49	2-630-005-31	SCREW (M2), NEW TRUSTER, P2 (Black)
#53	3-080-206-21	SCREW, TAPPING, P2 (Black)
#119	7-627-556-58	SCREW +P 2.6X5 (Black)

5. REPAIR PARTS LIST

5-1-7. HANDLE SECTION-2

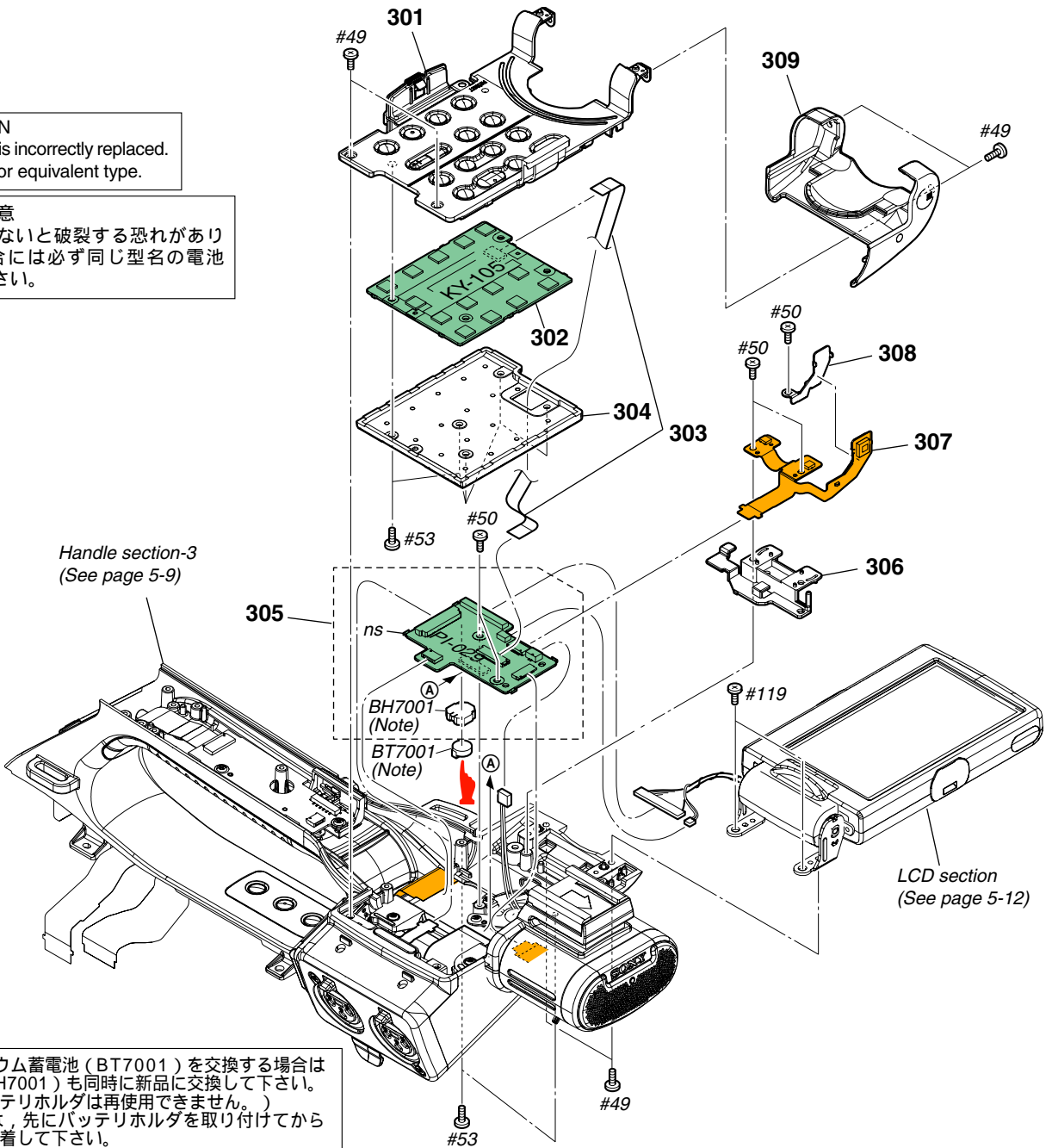
ns: not supplied

DISASSEMBLY

HARDWARE LIST

CAUTION
Danger of explosion if battery is incorrectly replaced.
Replace only with the same or equivalent type.

注意
電池の交換は、正しく行わないと破裂する恐れがあります。
電池を交換する場合には必ず同じ型名の電池
又は同等品と交換してください。



ノート: PI-029基板のリチウム蓄電池 (BT7001) を交換する場合は
バッテリーホルダ (BH7001) も同時に新品に交換して下さい。
(一度使用したバッテリーホルダは再使用できません。)
部品取り付けの際は、先にバッテリーホルダを取り付けてから
リチウム蓄電池を装着して下さい。

Note: Replace the battery holder (BH7001) together when replacing
the lithium storage battery (BT7001) on the PI-029 board. (The
battery holder removed once cannot be used again.)
When mounting these parts, mount new battery holder first
and attach new lithium storage battery next.

: BT7001 (LITHIUM STORAGE BATTERY)
Board on the mount position.
(See page 4-64.)

• Refer to page 5-1 for mark △.

Ref. No.	Part No.	Description
301	X-2188-605-1	PANEL ASSY, CONTROL
302	A-1599-625-A	KY-105 BOARD, COMPLETE
303	1-836-004-11	FLEXIBLE FLAT CABLE (FFC-170)
* 304	3-288-540-01	COVER (BB)
305	A-1616-348-A	PI-029 BOARD, COMPLETE
306	4-119-279-01	HOLDER, FLEXIBLE
307	A-1599-641-A	FP-966 FLEXIBLE BOARD, COMPLETE
308	X-2188-609-1	FIXED (759) ASSY

Ref. No.	Part No.	Description
309	X-2320-881-1	COVER (93000) ASSY, (FRONT)
△*BH7001	1-756-615-51	HOLDER, BATTERY (Note)
△BT7001	1-756-134-12	BATTERY, STORAGE, LITHIUM (Note)
#49	2-630-005-31	SCREW (M2), NEW TRUSTER, P2 (Black)
#50	2-891-494-11	SCREW (M2), NEW TRUSTER, P2 (Red)
#53	3-080-206-21	SCREW, TAPPING, P2 (Black)
#119	7-627-556-58	SCREW +P 2.6X5 (Black)

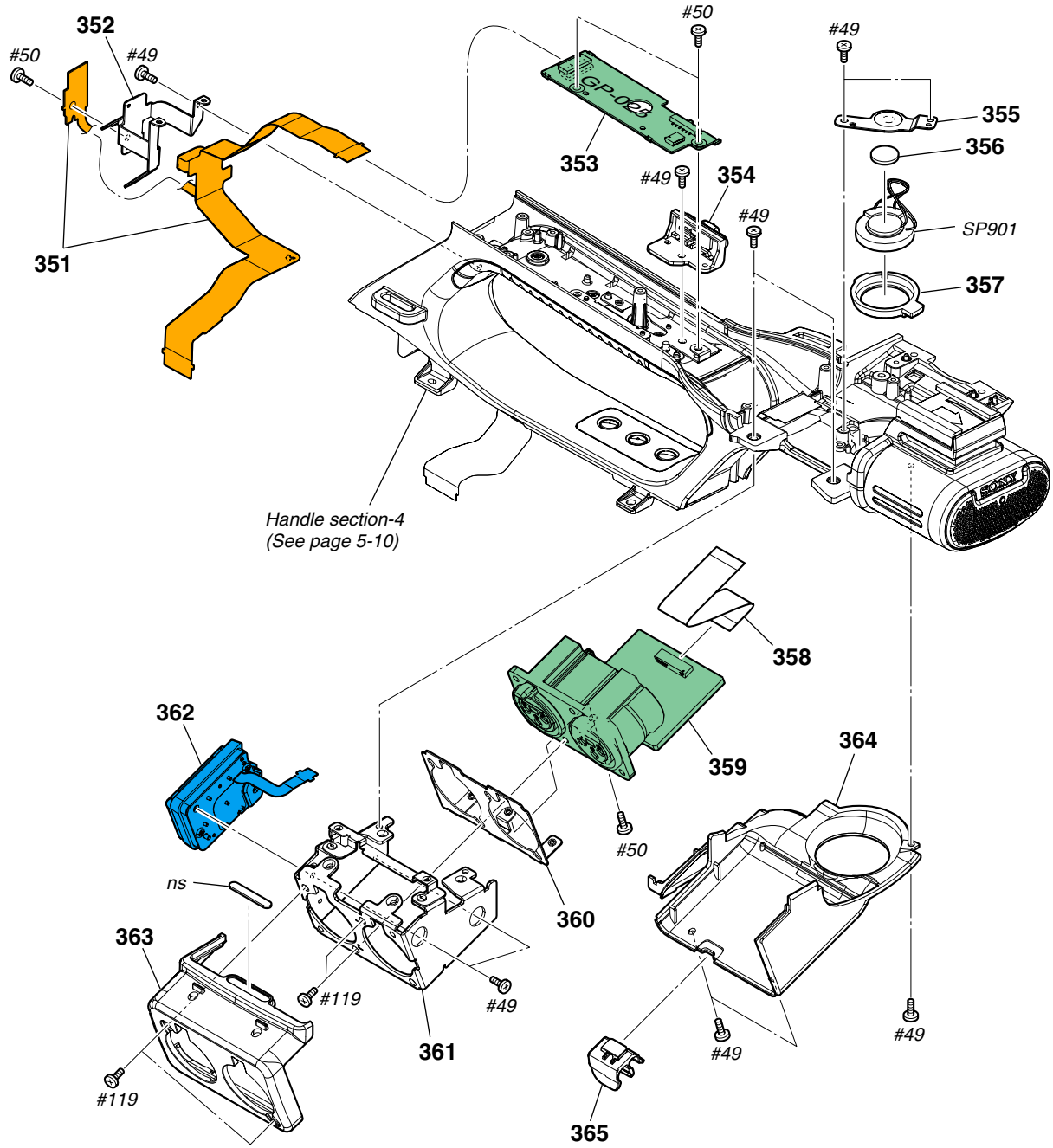
5. REPAIR PARTS LIST

5-1-8. HANDLE SECTION-3

ns: not supplied

DISASSEMBLY

HARDWARE LIST



Ref. No.	Part No.	Description
351	A-1599-637-A	FP-967 FLEXIBLE BOARD, COMPLETE
352	4-119-283-01	BRACKET, REAR TALLY
353	A-1599-627-A	GP-025 BOARD, COMPLETE
354	X-2188-599-1	KNOB ASSY, ZOOM SELECTION
* 355	4-119-284-01	RETAINER, SPEAKER
* 356	4-119-285-01	CUSHION, SPEAKER
357	2-178-550-01	HOLDER, SPEAKER
358	1-836-005-11	FLEXIBLE FLAT CABLE (FFC-171)
359	A-1599-620-A	XL-010 BOARD, COMPLETE
* 360	3-877-532-01	BRACKET, XL

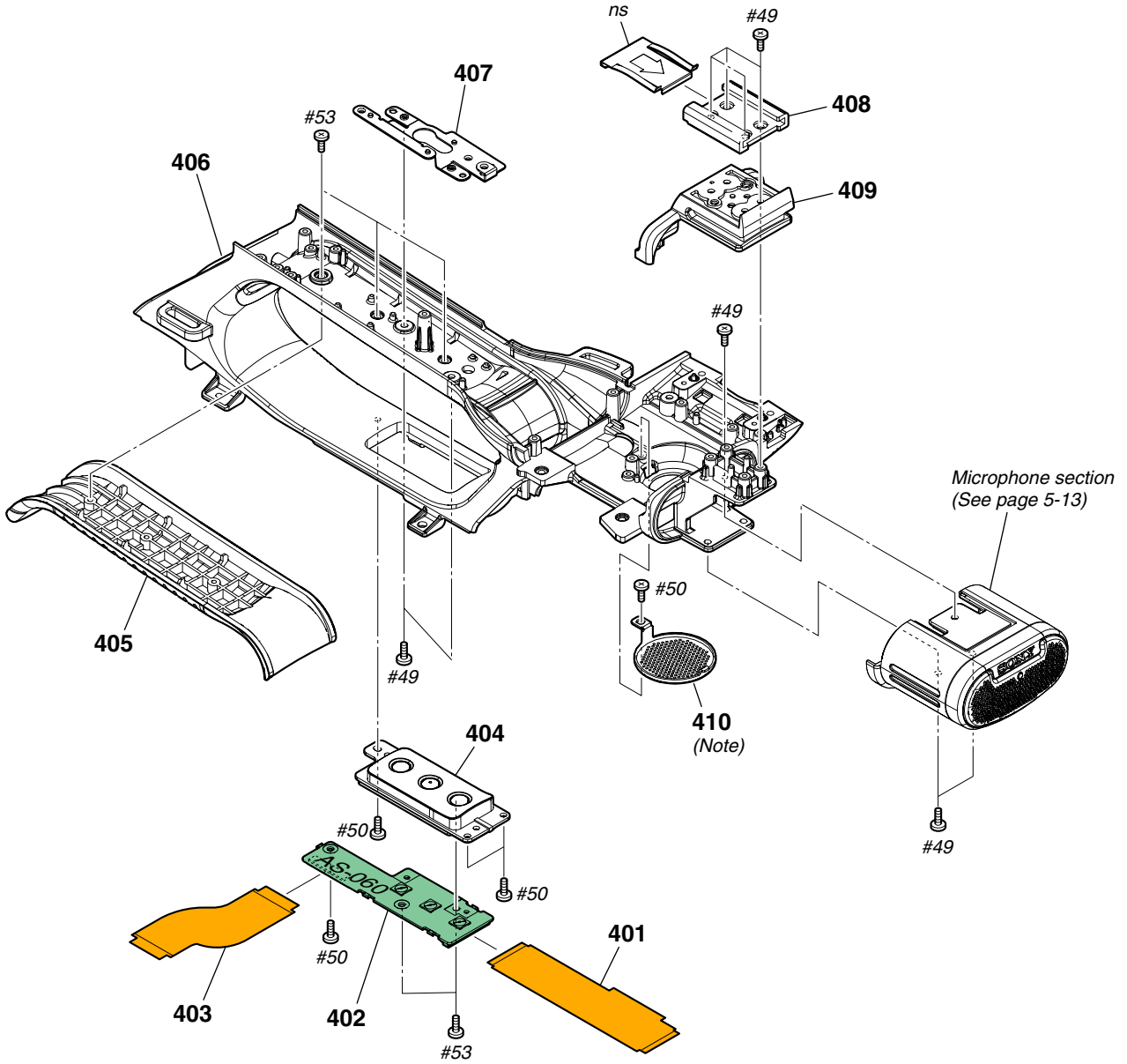
Ref. No.	Part No.	Description
361	X-2320-879-1	FRAME ASSY, XLR
362	1-480-870-11	SWITCH BLOCK, CONTROL (XS93000)
363	4-119-812-01	COVER, XLR
364	4-119-811-01	CABINET (93000), HANDLE (FRONT)
365	2-892-095-01	CLAMP, CABLE
SP901	1-825-968-11	LOUDSPEAKER (1.8CM)
#49	2-630-005-31	SCREW (M2), NEW TRUSTER, P2 (Black)
#50	2-891-494-11	SCREW (M2), NEW TRUSTER, P2 (Red)
#119	7-627-556-58	SCREW +P 2.6X5 (Black)

5. REPAIR PARTS LIST

5-1-9. HANDLE SECTION-4
 ns: not supplied

DISASSEMBLY

HARDWARE LIST



Note: スピーカグリル取付時は「HELP10」を必ずお読みください。

Note: Be sure to read "HELP10" when you install the speaker grille.

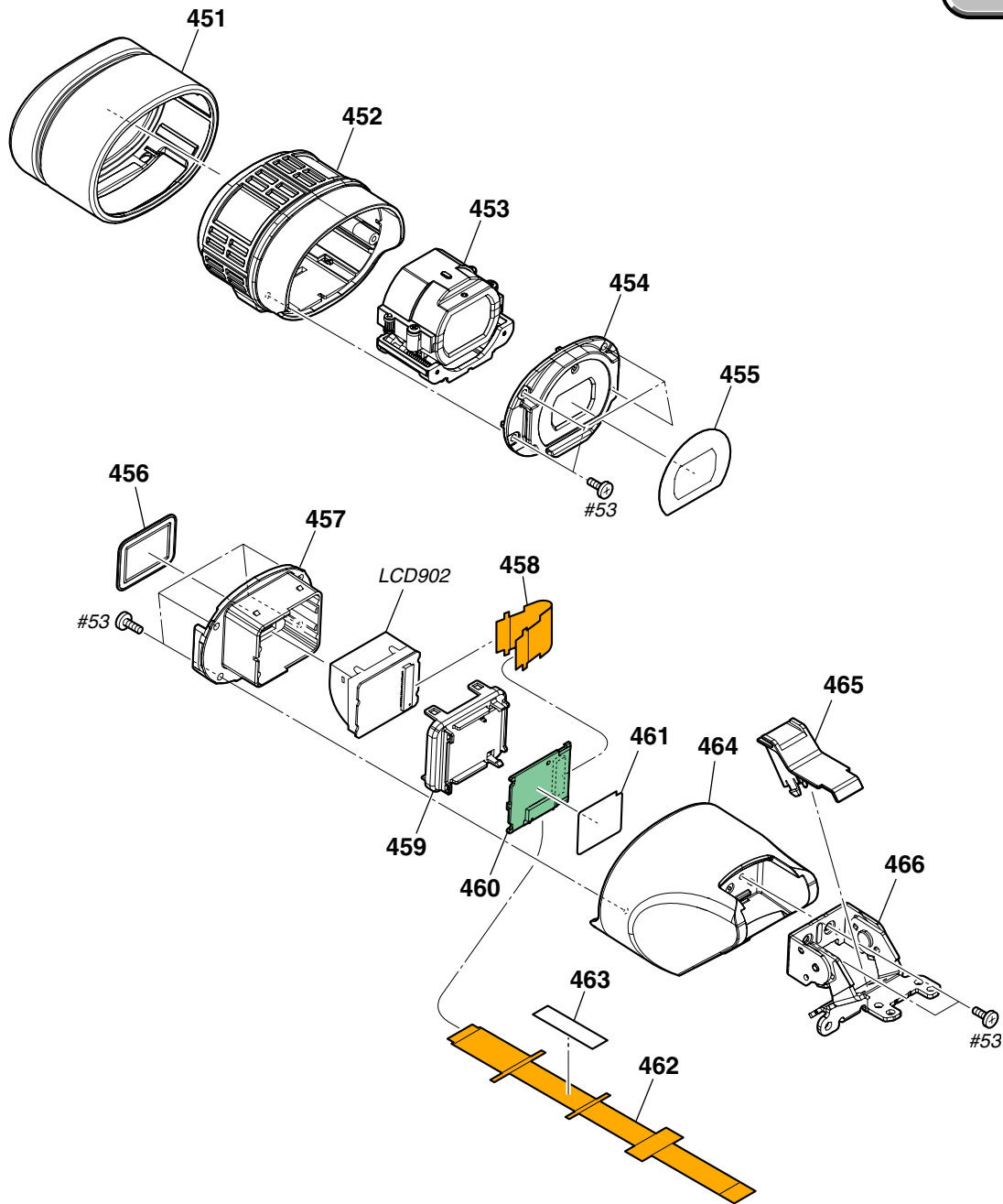
Ref. No.	Part No.	Description
401	1-876-953-11	FP-982 FLEXIBLE BOARD
402	A-1599-643-A	AS-060 BOARD, COMPLETE
403	1-876-952-11	FP-981 FLEXIBLE BOARD
404	X-2320-883-1	CABINET (93000) ASSY, ASSIGN
405	4-119-277-01	GRIP
406	4-119-276-11	HANDLE
407	4-119-282-01	BRACKET, GP

Ref. No.	Part No.	Description
408	3-069-286-03	SHOE, ACCESSORY
409	4-119-278-11	CABINET, FRONT SHOE
* 410	2-178-566-01	GRILLE, SPEAKER (Note)
#49	2-630-005-31	SCREW (M2), NEW TRUSTER, P2 (Black)
#50	2-891-494-11	SCREW (M2), NEW TRUSTER, P2 (Red)
#53	3-080-206-21	SCREW, TAPPING, P2 (Black)

5. REPAIR PARTS LIST

5-1-10. EVF SECTION

HARDWARE LIST



Ref. No.	Part No.	Description
451	4-119-301-01	EYE CUP (SMALL)
452	X-2320-885-1	EYE CUP (93000) ASSY
453	X-2320-861-1	LENS ASSY, VF
454	4-119-302-01	LID, EYE CUP CABINET
455	4-119-303-01	COVER, EYE CUP CABINET LID
456	3-288-591-01	SHEET, VF PROTECTION
457	3-288-585-01	CASE, PANEL
458	1-873-733-11	FP-776 FLEXIBLE BOARD
459	3-288-586-01	LID, PANEL
460	A-1599-826-A	VF-178 BOARD, COMPLETE

Ref. No.	Part No.	Description
* 461	3-299-948-01	SHEET (UU)
462	1-876-945-11	FP-974 FLEXIBLE BOARD
463	3-291-247-02	TAPE (VF)
464	X-2320-886-1	CABINET (93000) ASSY, VF
* 465	3-877-836-01	HOLDE_FPC (VF)
466	X-2320-859-1	HINGE ASSY, VF
LCD902	1-802-560-31	LCD MODULE
#53	3-080-206-21	SCREW, TAPPING, P2 (Black)

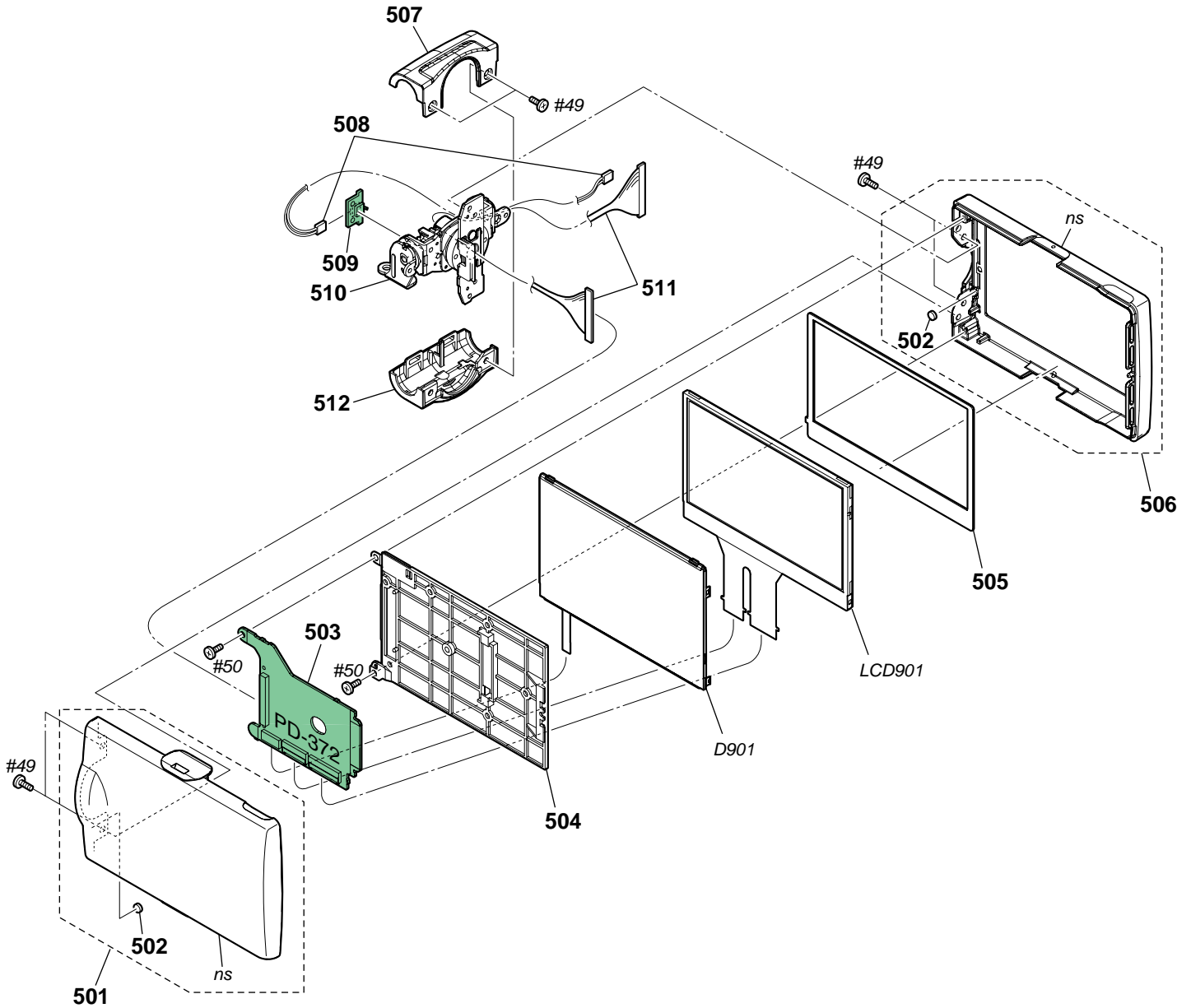
5. REPAIR PARTS LIST

5-1-11. LCD SECTION

ns: not supplied

DISASSEMBLY

HARDWARE LIST



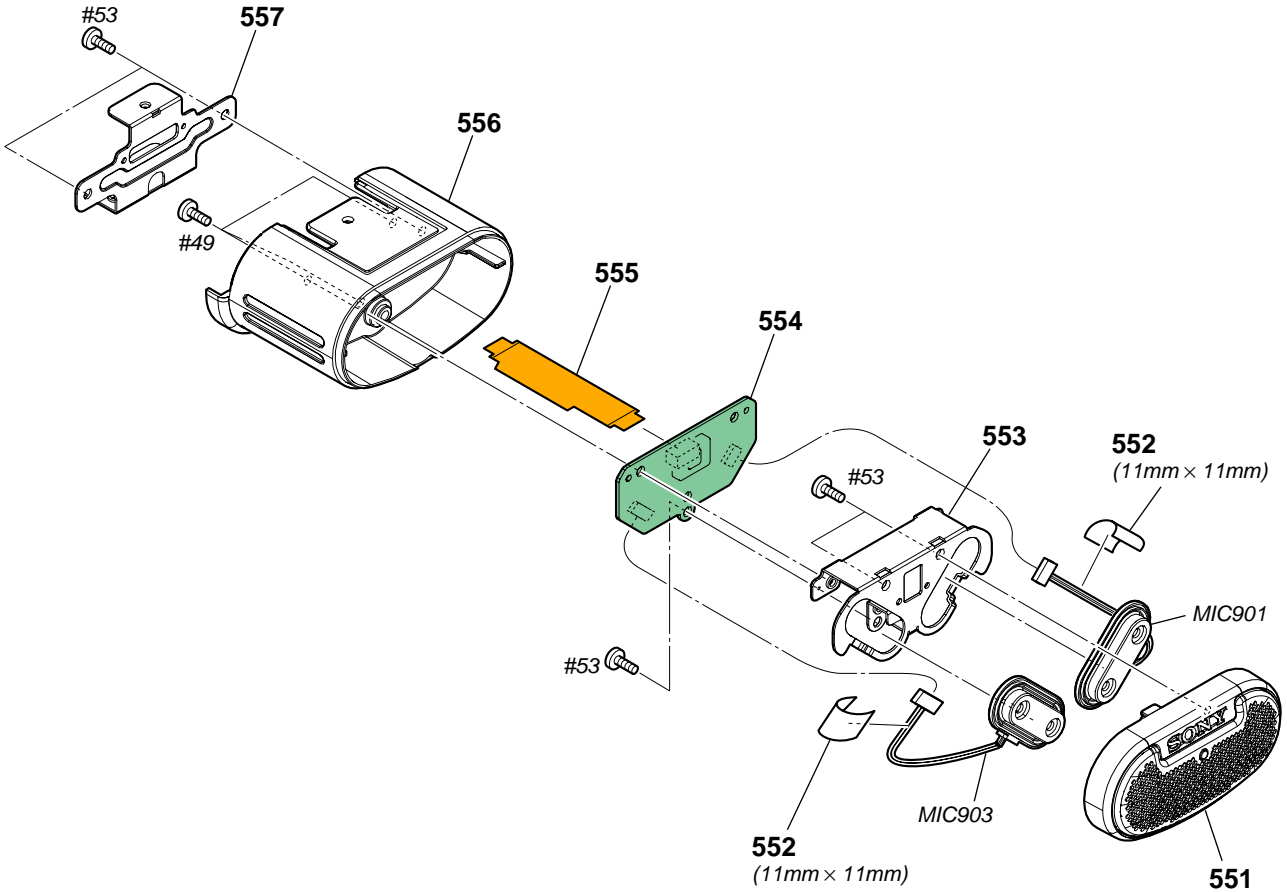
Ref. No.	Part No.	Description
501	X-2188-612-2	CABINET (UPPER) ASSY, PANEL
502	1-471-278-11	MAGNET
503	A-1599-827-A	PD-372 BOARD, COMPLETE
504	X-2188-611-1	FRAME ASSY, BL
505	3-288-565-11	CUSHION, PANEL
506	X-2188-613-1	CABINET (LOWER) ASSY, PANEL
507	3-288-566-02	CABINET (T), PANEL HINGE
508	1-963-030-21	HARNESS (SW-116)
509	A-1599-828-A	HT-002 BOARD, COMPLETE

Ref. No.	Part No.	Description
510	X-2342-571-1	HINGE (TYPE 07KAI) ASSY, PANEL
511	1-964-790-21	HARNESS (PR-074)
512	3-288-567-02	CABINET (B), PANEL HINGE
D901	1-480-358-11	BLOCK, LIGHT GUIDE PLATE (3.2)
LCD901	1-802-590-11	INDICATOR MODULE, LIQUIDCRYSTAL
#49	2-630-005-31	SCREW (M2), NEW TRUSTER, P2 (Black)
#50	2-891-494-11	SCREW (M2), NEW TRUSTER, P2 (Red)

5. REPAIR PARTS LIST

5-1-12. MICROPHONE SECTION

HARDWARE LIST



注意： 552 番は、ヒメロン T0.25 (3-076-631-01)を切って使用してください。

CAUTION: For the part of 552, cut NON WOVEN (T0.25) (3-076-631-01) into the desired length and use it.

Ref. No.	Part No.	Description
551	X-2320-887-1	GRILLE (93000) ASSY, MICROPHONE
552	CAUTION	TAPE (11x11)
* 553	4-119-326-01	BRACKET (F), MICROPHONE
554	A-1599-610-A	MA-454 BOARD, COMPLETE
555	1-876-946-11	FP-975 FLEXIBLE BOARD
556	4-119-325-11	COVER (M), MICROPHONE

Ref. No.	Part No.	Description
* 557	4-119-330-01	BRACKET (M), MICROPHONE
MIC901	1-542-513-21	MICROPHONE (R ch)
MIC903	1-542-513-21	MICROPHONE (L ch)
#49	2-630-005-31	SCREW (M2), NEW TRUSTER, P2 (Black)
#53	3-080-206-21	SCREW, TAPPING, P2 (Black)

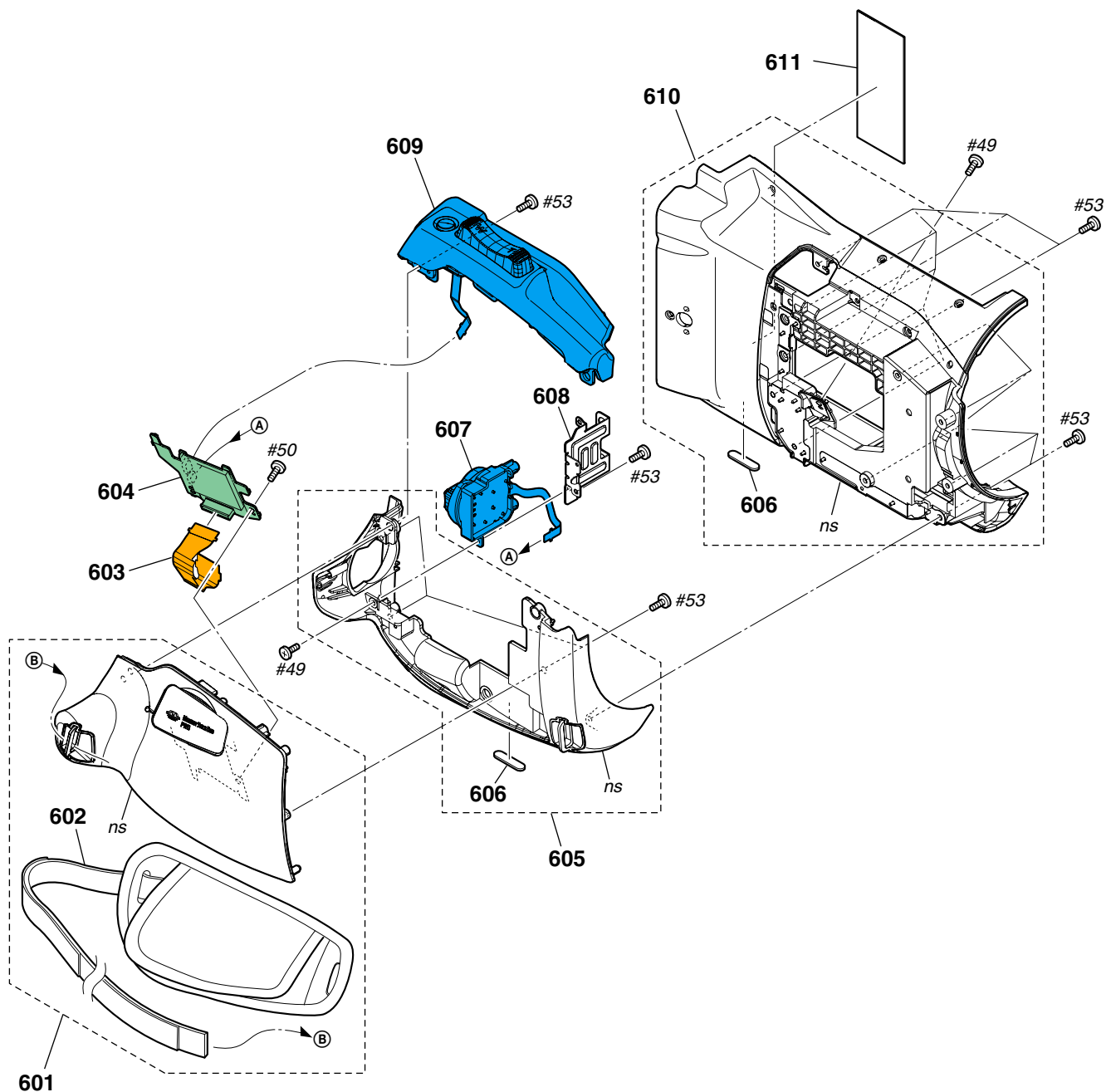
5. REPAIR PARTS LIST

5-1-13. CABINET (L) SECTION

ns: not supplied

DISASSEMBLY

HARDWARE LIST



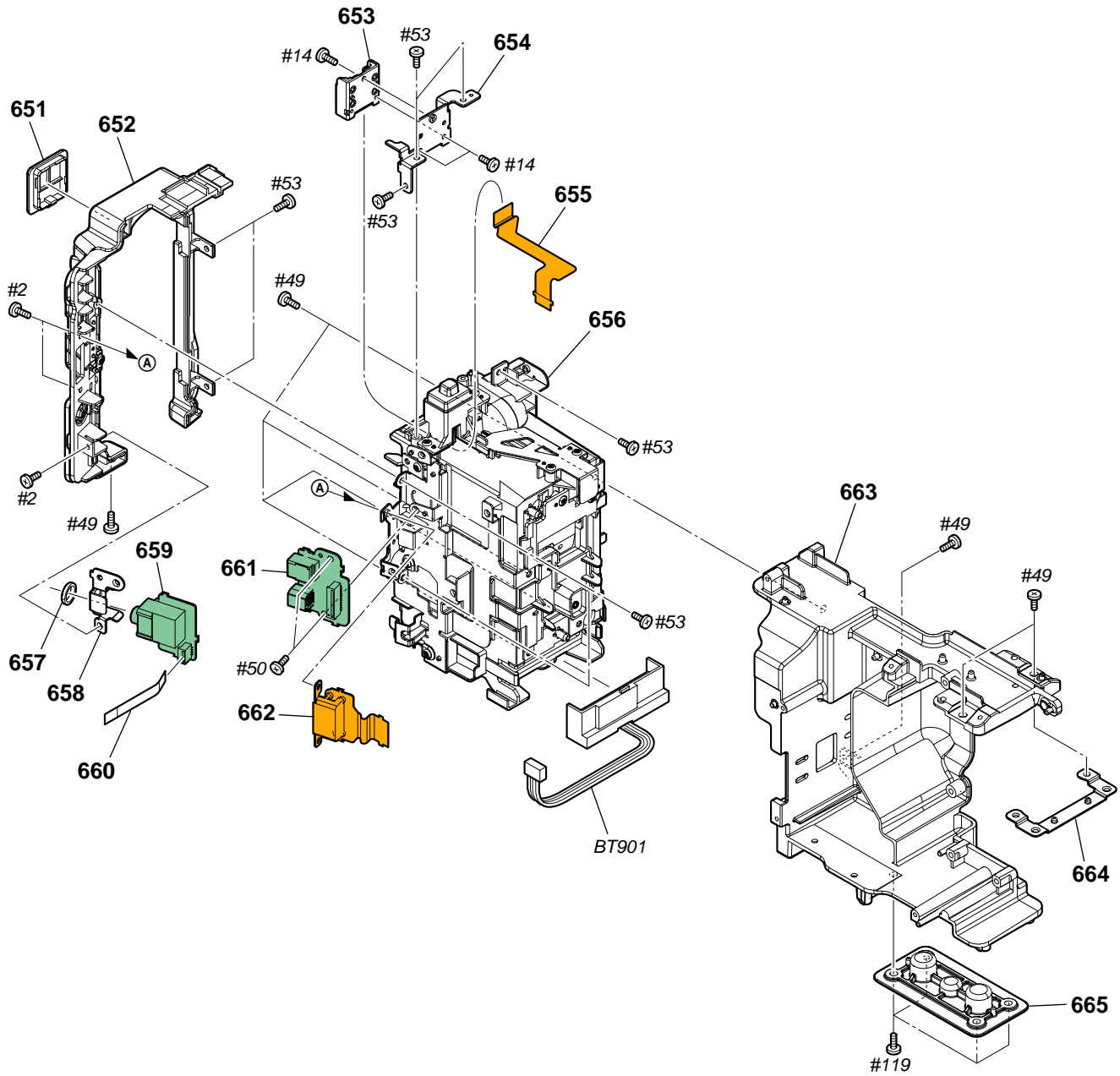
Ref. No.	Part No.	Description
601	X-2342-572-1	CABINET (G (93000)) ASSY
602	2-178-804-01	BELT, GRIP
603	1-876-942-11	FP-971 FLEXIBLE BOARD
604	A-1599-839-A	MS-405 BOARD, COMPLETE
605	X-2320-892-1	CABINET (U (93000)) ASSY
606	2-178-805-01	FOOT, RUBBER
607	1-480-869-11	SWITCH BLOCK, CONTROL (PS24000)

Ref. No.	Part No.	Description
* 608	4-119-422-01	FRAME, PS
609	1-480-868-21	SWITCH BLOCK, CONTROL (PZ93000)
610	X-2320-891-1	CABINET (L (93000)) ASSY
611	4-119-448-02	LABEL, FUSE REPLACEMENT CAUTION
#49	2-630-005-31	SCREW (M2), NEW TRUSTER, P2 (Black)
#50	2-891-494-11	SCREW (M2), NEW TRUSTER, P2 (Red)
#53	3-080-206-21	SCREW, TAPPING, P2 (Black)

5. REPAIR PARTS LIST

5-1-14. BT PANEL SECTION

HARDWARE LIST



• Refer to page 5-1 for mark Δ .

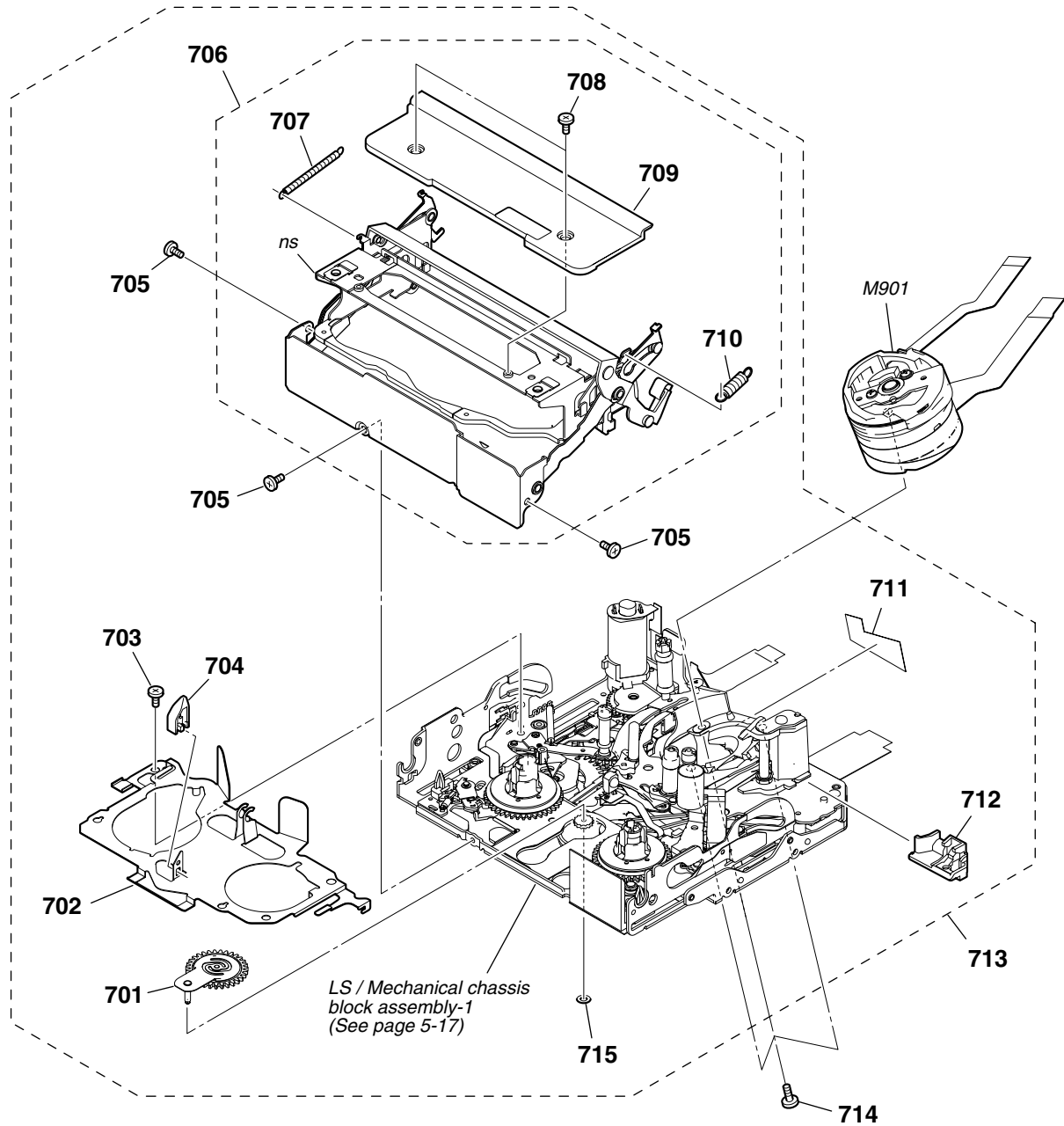
Ref. No.	Part No.	Description
651	4-119-791-01	COVER, BT SHOE
652	X-2320-876-2	PANEL (93000) ASSY, BT
653	1-818-890-21	CONNECTOR, EXTERNAL (HOT SHOE)
* 654	4-119-792-01	BRACKET, CF SHOE
655	1-876-943-11	FP-972 FLEXIBLE BOARD
656	X-2320-852-1	HOLDER (24000) ASSY, BT
657	3-061-234-01	NUT (M6X0.5)
658	4-119-251-01	HOLDER, JACK
659	A-1599-843-A	HP-153 BOARD, COMPLETE
660	1-836-003-11	FLEXIBLE FLAT CABLE (FFC-169)
661	A-1599-841-A	JK-376 BOARD, COMPLETE
662	A-1599-844-A	FP-965 FLEXIBLE BOARD, COMPLETE

Ref. No.	Part No.	Description
663	4-119-232-01	CHASSIS, MAIN
664	4-119-237-01	PLATE (F), MC FIXED
665	4-119-234-01	WASHER, TRIPOD
Δ BT901	1-694-411-31	TERMINAL BOARD, BATTERY
#2	2-635-562-31	SCREW (M1.7) (Black)
#14	2-599-475-11	SCREW (M1.7) (Silver)
#49	2-630-005-31	SCREW (M2), NEW TRUSTER, P2 (Black)
#50	2-891-494-11	SCREW (M2), NEW TRUSTER, P2 (Red)
#53	3-080-206-21	SCREW, TAPPING, P2 (Black)
#119	7-627-556-58	SCREW +P 2.6X5 (Black)

5. REPAIR PARTS LIST

5-1-15. MECHANISM DECK SECTION

ns: not supplied



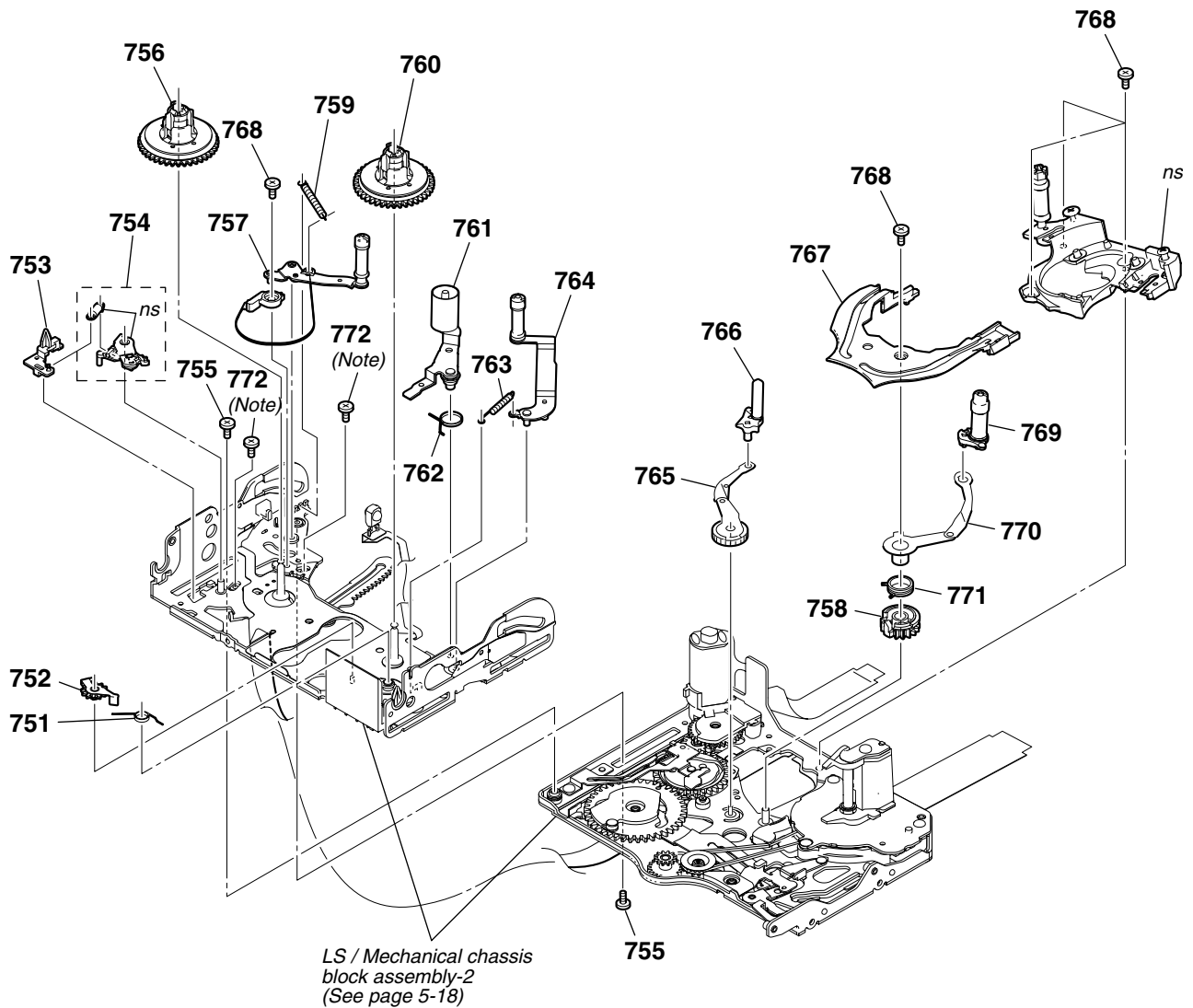
Ref. No.	Part No.	Description
701	X-2024-478-1	PENDULUM ASSY
702	2-342-917-02	BASE, LED
703	7-627-850-77	SCREW, PRECISION +P 1.4X1.8
704	3-079-366-11	RELEASE, REEL LOCK
705	3-703-816-08	SCREW (M1.4X1.4), SPECIAL HEAD
706	X-2103-406-3	CASSETTE COMPARTMENT ASSY
707	2-342-926-01	SPRING (ARM S), TENSION COIL
708	2-666-376-11	SCREW (1.4X1.0), POWER LOCK

Ref. No.	Part No.	Description
709	2-342-933-02	PLATE, TOP
710	2-342-927-01	SPRING (ARM T), TENSION COIL
711	2-541-585-01	HEET, FLEXIBLE ADHESIVE
712	2-342-918-01	TG6 CATCHER
713	A-1437-006-A	MD (N220) SUB ASSY (S) A
714	3-703-816-13	SCREW (M1.4X2.0), SPECIAL HEAD
715	3-315-414-31	WASHER
M901	A-1128-533-A	DRUM (DEH-33B-R)

5. REPAIR PARTS LIST

5-1-16. LS/MECHANICAL CHASSIS BLOCK ASSEMBLY-1

ns: not supplied



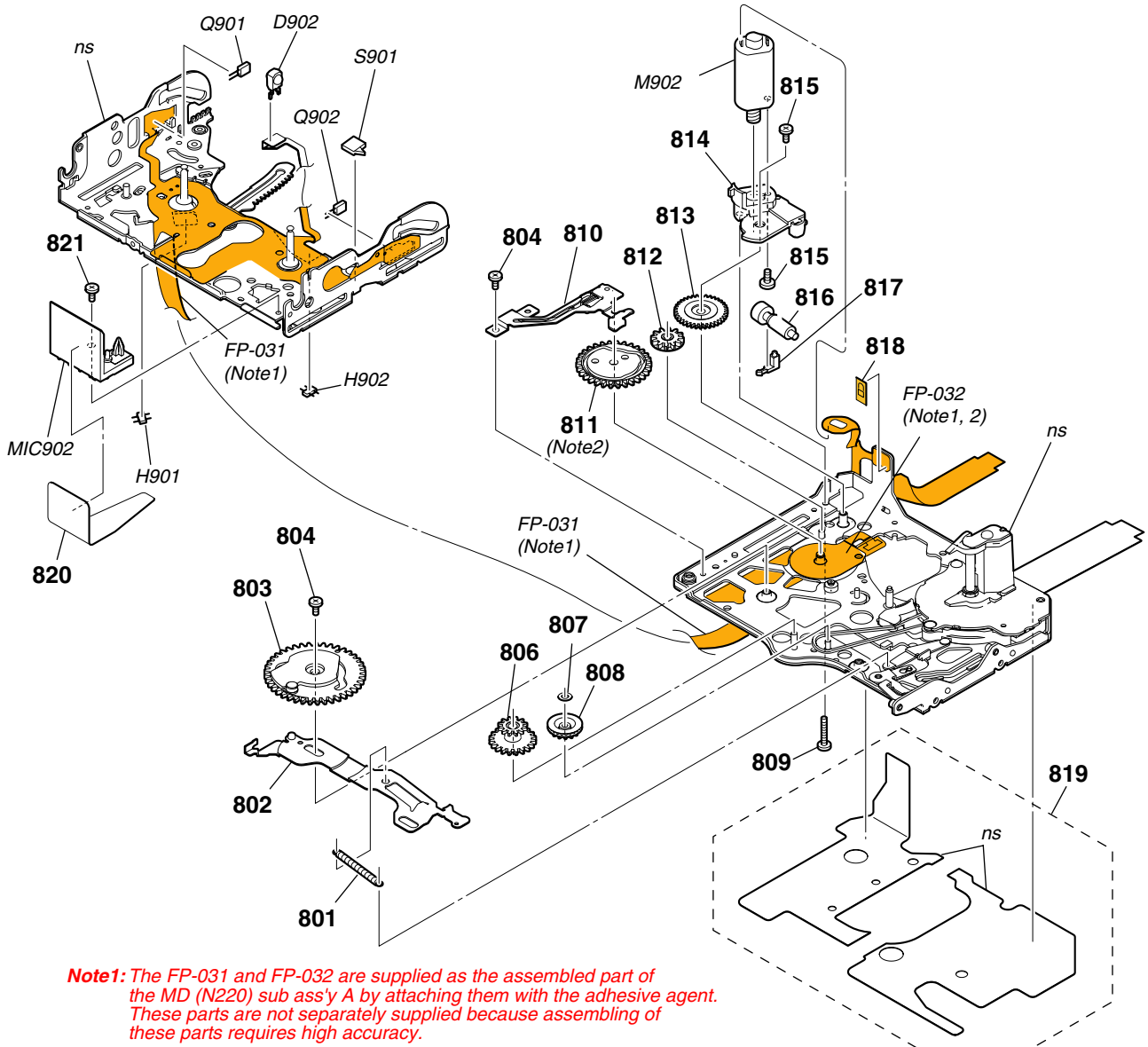
Note: These two screws are the fixing screws of the LS cam plate.
 These two fixing screws are used for adjusting the LS cam plate position.
 (Refer to 4-2. LS cam adjustment of 6-2. MECHANISM SECTION ADJUSTMENTS)

Ref. No.	Part No.	Description	Ref. No.	Part No.	Description
751	2-342-759-01	SPRING, RVS BRAKE	762	2-342-906-01	SPRING (PINCH RETURN), TORSION
752	A-1083-005-A	BRAKE BLOCK ASSY, RVS	763	2-342-626-01	SPRING (RETURN TG6), EXTENSION
753	2-342-731-01	POSITIONING, S	764	A-1083-002-A	TG6 BLOCK ASSY
754	A-1083-006-A	BRAKE BLOCK ASSY, S	765	X-2024-468-1	ARM (S) ASSY, GL
755	3-075-097-11	SCREW (M1.4X1.4), SPECIAL HEAD	766	X-2024-465-1	COASTER (S) ASSY
756	X-2067-290-1	TABLE ASSY, S REEL	767	2-342-612-01	RAIL
757	A-1132-279-A	REGULATOR BLOCK ASSY, TENSION	768	3-703-816-13	SCREW (M1.4X2.0), SPECIAL HEAD
758	2-342-705-01	GEAR (T), GL	769	X-2024-466-1	COASTER (T) ASSY
759	2-342-902-01	SPRING, TENSION REGULATOR	770	X-2024-469-1	ARM (T) ASSY, GL
760	X-2067-291-1	TABLE ASSY, T REEL	771	2-342-716-01	SPRING (T), TORSION COIL
761	X-2067-295-1	ARM ASSY, PINCH	772	3-703-816-08	SCREW (M1.4X1.4), SPECIAL HEAD (for adjustment) (Note)

5. REPAIR PARTS LIST

5-1-17. LS/MECHANICAL CHASSIS BLOCK ASSEMBLY-2

ns: not supplied



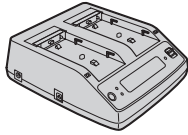
Note1: The FP-031 and FP-032 are supplied as the assembled part of the MD (N220) sub ass'y A by attaching them with the adhesive agent. These parts are not separately supplied because assembling of these parts requires high accuracy.

Note2: The mode switch (S903) function works when the contactor of the FP-032 contacts with the bottom surface of wiper of the mode gear ass'y.

Ref. No.	Part No.	Description	Ref. No.	Part No.	Description
801	2-342-624-02	SPRING (PINCH LIMITTER), EXTEN	818	1-677-049-11	FP-228 FLEXIBLE BOARD (DEW SENSOR)
802	X-2024-463-2	SLIDER ASSY, MODE	819	2-342-686-01	COVER, CAPSTAN
803	X-2024-462-1	GEAR ASSY, CAM	820	2-541-984-01	COVER, MIC
804	3-075-097-11	SCREW (M1.4X1.4), SPECIAL HEAD	821	3-703-816-13	SCREW (M1.4X2.0), SPECIAL HEAD
806	2-342-621-01	GEAR, RELAY			
807	3-315-414-31	WASHER	D902	6-500-652-01	DIODE GL453SE0000F (TAPE LED)
808	2-342-620-01	GEAR, CONVERSION	H901	8-719-067-74	ELEMENT, HOLE HW-105A-CDE-T (S REEL SENSOR)
809	3-084-377-01	HEAD (SCREW M1.2)	H902	8-719-067-74	ELEMENT, HOLE HW-105A-CDE-T (T REEL SENSOR)
810	X-2024-460-1	BASE ASSY, CAM	M902	X-2024-464-1	MOTOR ASSY (LOADING MOTOR)
811	X-2024-461-1	GEAR ASSY, MODE (Note 2)	MIC902	1-818-576-11	PIN, CONNECTOR (WITH DETECTION) (4PIN CONNECTOR)
812	2-342-615-01	GEAR, NO.2	Q901	6-550-672-01	TRANSISTOR PT4850FJE00F (TAPE END SENSOR)
813	2-342-691-01	GEAR, NO.1	Q902	6-550-672-01	TRANSISTOR PT4850FJE00F (TAPE TOP SENSOR)
814	2-637-945-01	HOLDER, MOTOR	S901	1-786-448-22	SWITCH, PUSH (1 KEY) (CC DOWN)
815	3-895-822-71	SCREW (M1.2X2), SPECIAL, 0			
816	2-342-689-01	SHAFT (2J), WORM			
817	2-637-947-01	BASE, MOTOR HOLDER			

• **EXCEPT J MODEL**
Checking supplied accessories.

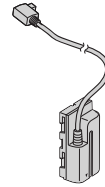
Note : This item is supplied with the unit as an accessory, but is not prepared as a service part.



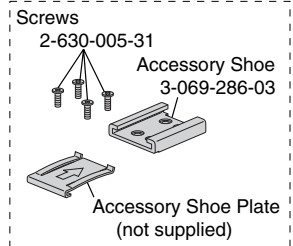
AC Adaptor/Charger
(AC-VQ1050)
▲ 1-479-580-12



Power cord (mains lead)
▲ 1-790-107-61 (Z5U)
▲ 1-832-121-31 (Z5C)
▲ 1-834-482-21 (Z5N/Z5E/Z5P)



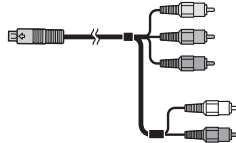
Connecting Cord
(DK-415)
1-782-361-15



Accessory Shoe Kit
X-2188-877-2



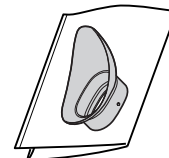
Wireless Remote Commander
(RMT-831)
1-478-495-41



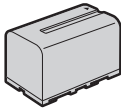
Component A/V cable
1-834-646-11



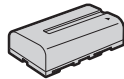
A/V connecting cable
1-823-156-61



Large eyecup
X-2342-702-1



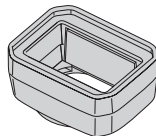
Rechargeable battery pack
(NP-F770)
(Only for models HVR-Z5U)
(Note)



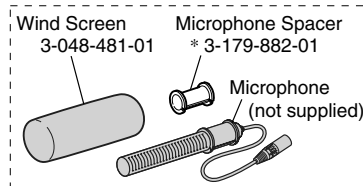
Rechargeable battery pack
(NP-F570)
(Only for models HVR-Z5C/Z5E/Z5N/Z5P)
(Note)



Conversion (2P) Adaptor
▲ 1-569-008-12 (Z5N)



Lens hood with lens cover
X-2320-850-1



Wind Screen, Microphone
(ECM-XM1)
1-542-749-11



Operating Guide
4-114-857-11 (ENGLISH) (Z5N/Z5U)
4-114-858-11 (ENGLISH) (Z5E/Z5P)
4-114-858-21 (SIMPLIFIED CHINESE) (Z5C)



CD-ROM "Manuals for
Digital HD Video
Camera Recorder"
4-114-855-01



Operating Guide
(PDF)

The CD-ROM supplied contains all of language version of the Operating Guide for printing.

- The printed matter is not supplied. If required, please order it with the part number below.

- | | |
|-------------------------|-----------------------------------|
| 4-114-857-01 (JAPANESE) | 4-114-858-11 (ENGLISH) |
| 4-114-857-11 (ENGLISH) | 4-114-858-21 (SIMPLIFIED CHINESE) |
| * 4-114-857-21 (FRENCH) | * 4-114-858-31 (FRENCH) |
| | * 4-114-858-41 (SPANISH) |
| | * 4-114-858-51 (ITALIAN) |
| | * 4-114-858-61 (GERMAN) |