

HVR-Z7J/Z7U/Z7N/Z7E/Z7P/Z7C

RMT-831

SERVICE MANUAL

Ver. 1.1 2008.02

Revision History

Revised-1

Replace the previously issued SERVICE MANUAL 9-852-265-11 with this manual.



US Model
Canadian Model
AEP Model
E Model
Chinese Model
Japanese Model

N MECHANISM (MDX-N231)

Photo: HVR-Z7U

Link

SPECIFICATIONS	BLOCK DIAGRAMS	REPAIR PARTS LIST
MODEL INFORMATION TABLE	FRAME SCHEMATIC DIAGRAMS	ADJUSTMENTS
SERVICE NOTE	SCHEMATIC DIAGRAMS	INSTRUCTION MANUAL
DISASSEMBLY	PRINTED WIRING BOARDS	

• Addition of "60i/50i SEL" Menu

The components identified by mark Δ or dotted line with mark Δ are critical for safety. Replace only with part number specified.


Les composants identifiés par une marque Δ sont critiques pour la sécurité. Ne les remplacer que par une pièce portant le numéro spécifié.

Mini DV Digital Video Cassette

DIGITAL HD VIDEO CAMERA RECORDER

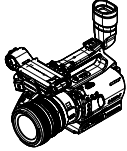

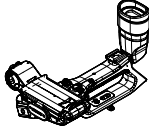

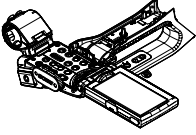
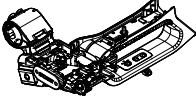
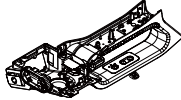
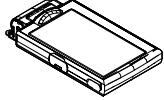

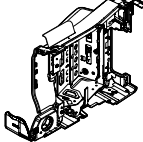
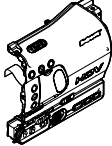
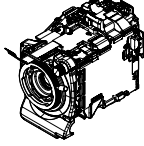
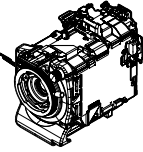
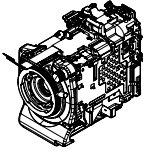
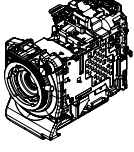
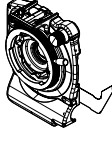
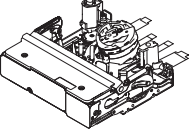
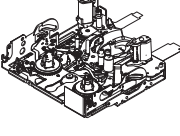
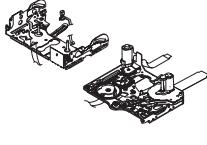
SONY®

5. REPAIR PARTS LIST (1/2)

TO (2/2) NOTE: Characters **A** to **Z** of the electrical parts list indicate location of exploded views in which the desired part is shown.

Link

EXPLODED VIEWS

 A	 B	 C	 D
OVERALL SECTION-1	LENS SECTION	HANDLE SECTION-1	EVF SECTION
 E	 F	 G	 H
HANDLE SECTION-2	HANDLE SECTION-3	HANDLE SECTION-4	LCD SECTION
 I	 J	 K	 L
OVERALL SECTION-2	CABINET (L) SECTION	CABINET (R) SECTION	MD/JACK SECTION
 M	 N	 O	 P
MAIN BOARD SECTION	MS/ENG SECTION	BT PANEL SECTION	LENS MOUNT SECTION
 Q	 R	 S	
MECHANISM DECK SECTION	LS/MECHANICAL CHASSIS BLOCK ASSEMBLY-1	LS/MECHANICAL CHASSIS BLOCK ASSEMBLY-2	

5. REPAIR PARTS LIST (2/2)



NOTE: Characters **A** to **Z** of the electrical parts list indicate location of exploded views in which the desired part is shown.

Link

ELECTRICAL PARTS LIST

ACCESSORIES

• BB-010 BOARD E	• FP-759 FLEXIBLE BOARD F	• OO-006 BOARD N
• EE-009 BOARD P	• GG-005 BOARD F	• PP-005 BOARD H
• EE-010 BOARD P	• GY-005 BOARD B	• RR-005 BOARD K
• FP-031 FLEXIBLE BOARD S	• HH-008 BOARD H	• SS-182 BOARD G
• FP-032 FLEXIBLE BOARD S	• II-005 BOARD L	• TT-007 BOARD M
• FP-228 FLEXIBLE BOARD S	• JJ-005 BOARD L	• UU-005 BOARD D
• FP-486 FLEXIBLE BOARD L	• KK-032 BOARD K	• WW-005 BOARD N
• FP-645 FLEXIBLE BOARD M	• LG-005 BOARD B	• XX-016 BOARD F
• FP-756 FLEXIBLE BOARD J	• LL-014 BOARD N	• YY-005 BOARD G
• FP-757 FLEXIBLE BOARD F	• NN-005 BOARD L	• ZZ-005 BOARD E

5. REPAIR PARTS LIST

5. REPAIR PARTS LIST

(ENGLISH)

NOTE:

- -XX, -X mean standardized parts, so they may have some differences from the original one.
- Items marked "*" are not stocked since they are seldom required for routine service. Some delay should be anticipated when ordering these items.
- The mechanical parts with no reference number in the exploded views are not supplied.
- Due to standardization, replacements in the parts list may be different from the parts specified in the diagrams or the components used on the set.
- CAPACITORS:
uF: μ F
- COILS
uH: μ H
- RESISTORS
All resistors are in ohms.
METAL: metal-film resistor
METAL OXIDE: Metal Oxide-film resistor
F: nonflammable
- SEMICONDUCTORS
In each case, u: μ , for example:
uA...: μ A..., uPA..., μ PA...,
uPB..., μ PB..., uPC..., μ PC...,
uPD..., μ PD...

When indicating parts by reference number, please include the board name.

The components identified by mark \triangle or dotted line with mark \triangle are critical for safety. Replace only with part number specified.

Les composants identifiés par une marque \triangle sont critiques pour la sécurité. Ne les remplacer que par une pièce portant le numéro spécifié.

- Color Indication of Appearance Parts
Example:
(SILVER) : Cabinet's Color
(Silver) : Parts Color

(JAPANESE)

【使用上の注意】

- ここに記載されている部品は、補修用部品であるため、回路図及びセットに付いている部品と異なる場合があります。
- -XX, -Xは標準化部品のため、セットに付いている部品と異なる場合があります。
- *印の部品は常備在庫しておりません。
- コンデンサの単位でuFは μ Fを示します。
- 抵抗の単位 Ω は省略してあります。
金 被：金属被膜抵抗。
サンキン：酸化金属被膜抵抗。
- インダクタの単位でuHは μ Hを示します。
- 半導体の名称でuA..., uPA..., uPB..., uPC..., uPD...等はそれぞれ μ A..., μ PA..., μ PB..., μ PC..., μ PD...を示します。

お願い
図面番号で部品を指定するときは基板名又はブロックを併せて指定してください。

\triangle 印の部品、または \triangle 印付の点線で囲まれた部品は、安全性を維持するために、重要な部品です。従って交換時は、必ず指定の部品を使用してください。

- 外装部品色表示
例：
(SILVER):セットの色を表す。
(Silver) : 部品の色を表す。

- Abbreviation
AR : Argentine model
AUS : Australian model
BR : Brazilian model
CH : Chinese model
CND : Canadian model
EE : East European model
HK : Hong Kong model
J : Japanese model
JE : Tourist model
KR : Korea model
NE : North European model

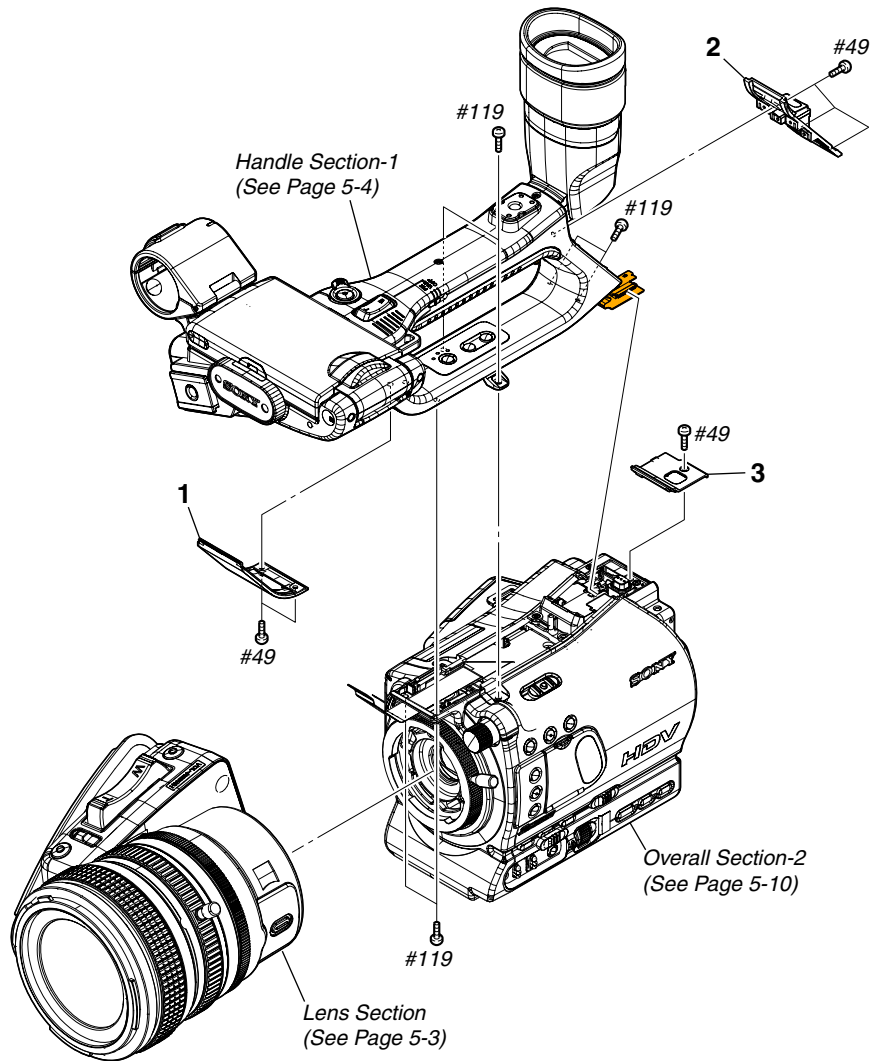
5. REPAIR PARTS LIST

DISASSEMBLY

HARDWARE LIST

5-1. EXPLODED VIEWS

5-1-1. OVERALL SECTION-1



Ref. No.	Part No.	Description
1	3-288-534-01	CABINET (FRONT), HANDLE
2	X-2188-603-1	CABINET (REAR) ASSY, HANDLE
3	3-288-398-01	CABINET (TOP)

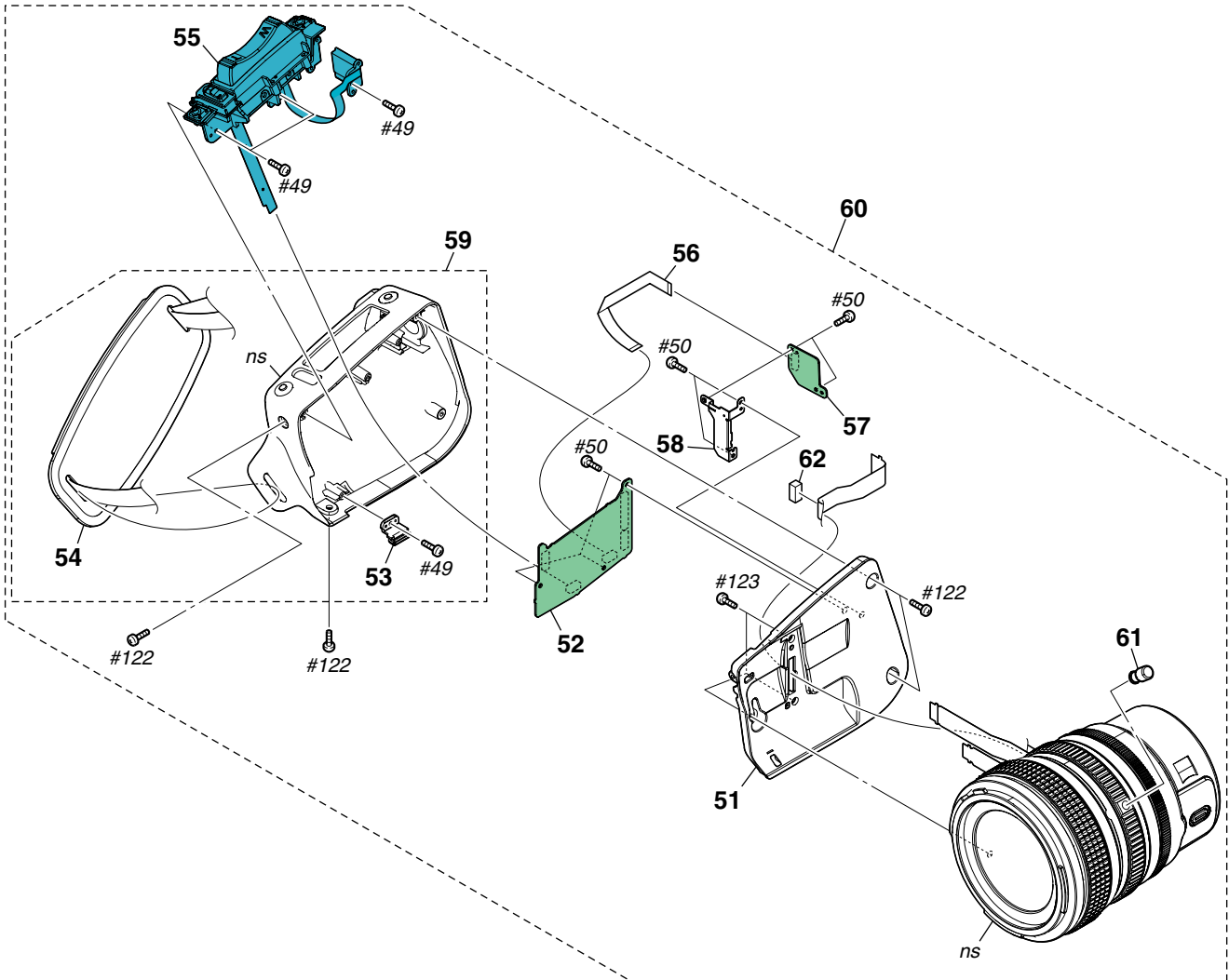
Ref. No.	Part No.	Description
#49	2-630-005-31	SCREW (M2), NEW TRUSTER, P2 (Black)
#119	7-627-556-58	SCREW +P 2.6X5 (Black)

5. REPAIR PARTS LIST

HARDWARE LIST

5-1-2. LENS SECTION

ns: not supplied



Ref. No.	Part No.	Description
51	3-288-599-01	COVER, GRIP
52	A-1486-850-A	LG-005 BOARD, COMPLETE
53	3-288-595-01	FOOT, GRIP
54	3-288-596-01	BELT, GRIP
55	1-480-300-11	SWITCH BLOCK, CONTROL (LZ92000)
56	1-834-246-11	FLEXIBLE FLAT CABLE (FFC-118)
57	A-1510-484-A	GY-005 BOARD, COMPLETE (SERVICE)
* 58	3-288-600-01	HOLDER, GYRO PC BOARD
59	X-2188-617-1	CABINET ASSY, GRIP

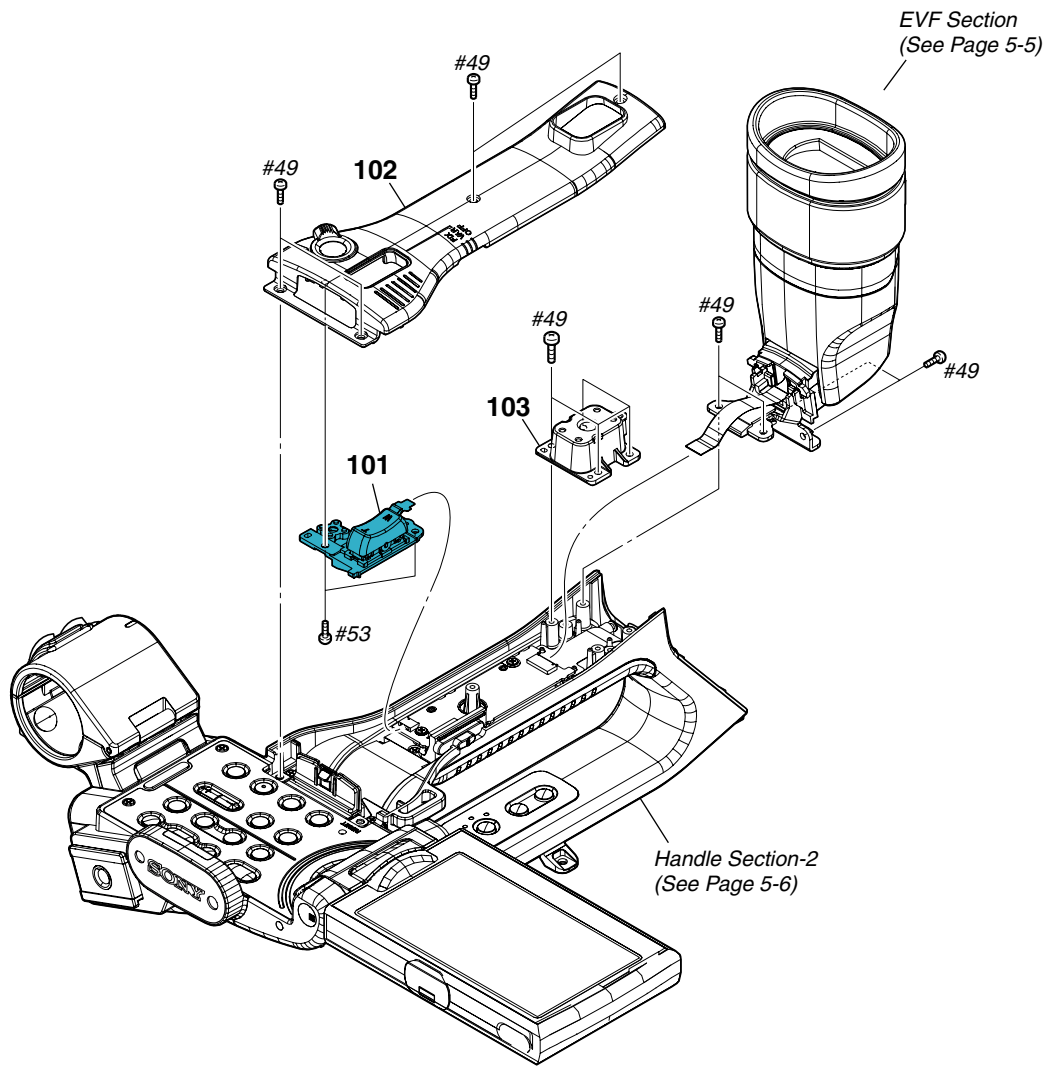
Ref. No.	Part No.	Description
60	A-1539-025-A	LENS COMPLETE ASSY (SERVICE)
61	3-292-214-01	LEVER, ZOOM
* 62	3-299-763-01	CUSHION (LN)
#49	2-630-005-31	SCREW (M2), NEW TRUSTER, P2 (Black)
#50	2-891-494-11	SCREW (M2), NEW TRUSTER, P2 (Red)
#122	7-682-547-09	SCREW +B 3X6 (Black)
#123	7-682-561-09	SCREW +B 4X8 (Black)

5. REPAIR PARTS LIST

DISASSEMBLY

HARDWARE LIST

5-1-3. HANDLE SECTION-1



Ref. No.	Part No.	Description
101	1-480-298-11	SWITCH BLOCK, CONTROL (GZ92000)
102	X-2188-601-1	CABINET (UPPER) ASSY, HANDLE
103	3-288-538-01	SHOE, REAR (COLD)

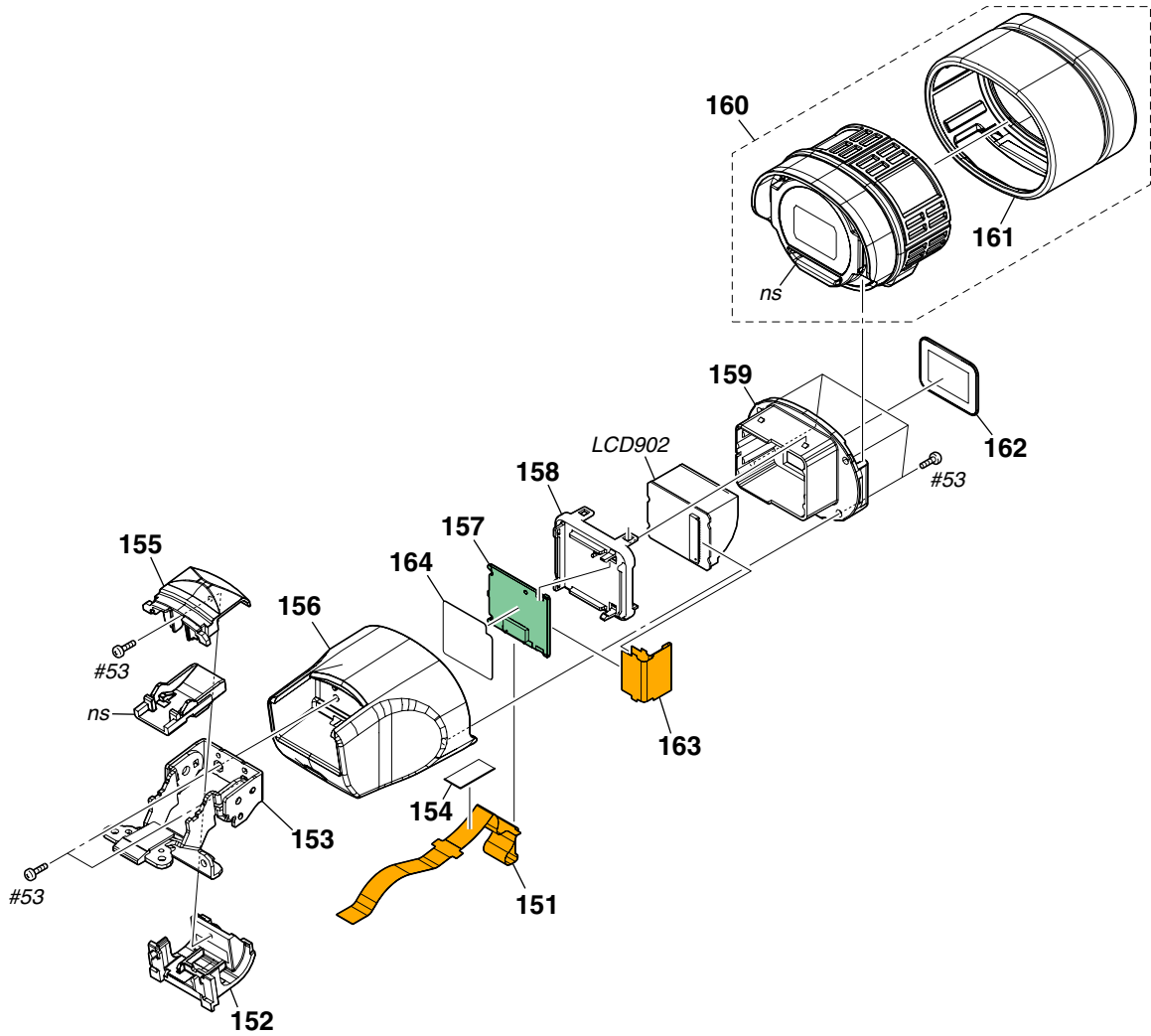
Ref. No.	Part No.	Description
#49	2-630-005-31	SCREW (M2), NEW TRUSTER, P2 (Black)
#53	3-080-206-21	SCREW, TAPPING, P2 (Black)

5. REPAIR PARTS LIST

HARDWARE LIST

5-1-4. EVF SECTION

ns: not supplied



Ref. No.	Part No.	Description
151	1-873-732-11	FP-775 FLEXIBLE BOARD
152	3-288-588-01	CABINET (LOWER), VF HINGE
153	X-2188-615-1	TILT ASSY, VF
154	3-291-247-02	TAPE (VF)
155	3-288-587-01	CABINET (UPPER), VF HINGE
156	X-2188-614-1	CABINET ASSY, VF
157	A-1486-837-A	UU-005 BOARD, COMPLETE
158	3-288-586-01	LID, PANEL
159	3-288-585-01	CASE, PANEL

Ref. No.	Part No.	Description
160	X-2188-616-1	FINDER ASSY
161	3-288-590-01	EYE CUP
162	3-288-591-01	SHEET, VF PROTECTION
163	1-873-733-11	FP-776 FLEXIBLE BOARD
* 164	3-299-948-01	SHEET (UU)
LCD902	1-802-560-11	LCD MODULE
#53	3-080-206-21	SCREW, TAPPING, P2 (Black)

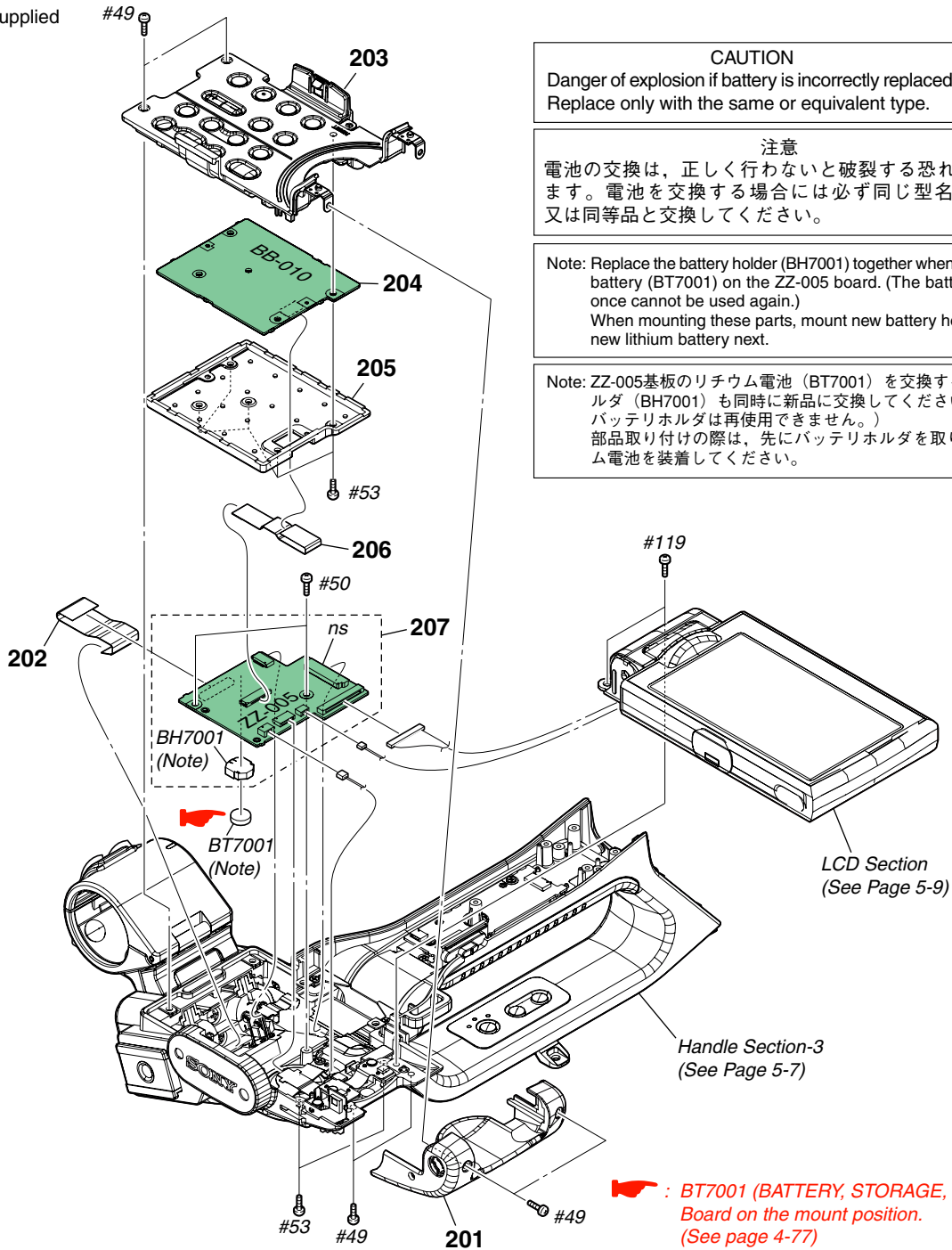
5. REPAIR PARTS LIST

DISASSEMBLY

HARDWARE LIST

5-1-5. HANDLE SECTION-2

ns: not supplied



CAUTION
 Danger of explosion if battery is incorrectly replaced.
 Replace only with the same or equivalent type.

注意
 電池の交換は、正しく行わないと破裂する恐れがあります。電池を交換する場合には必ず同じ型名の電池又は同等品と交換してください。

Note: Replace the battery holder (BH7001) together when replacing the lithium battery (BT7001) on the ZZ-005 board. (The battery holder removed once cannot be used again.)
 When mounting these parts, mount new battery holder first and attach new lithium battery next.

Note: ZZ-005基板のリチウム電池 (BT7001) を交換する場合はバッテリーホルダ (BH7001) も同時に新品に交換してください。(一度使用したバッテリーホルダは再使用できません。)
 部品取り付けの際は、先にバッテリーホルダを取り付けてからリチウム電池を装着してください。

• Refer to page 5-1 for mark △.

Ref. No.	Part No.	Description
201	X-2188-604-1	CABINET (HORIZONTAL) ASSY
202	1-834-244-11	FLEXIBLE FLAT CABLE (FFC-116)
203	X-2188-605-1	PANEL ASSY, CONTROL
204	A-1486-841-A	BB-010 BOARD, COMPLETE
* 205	3-288-540-01	COVER (BB)
206	1-834-245-11	FLEXIBLE FLAT CABLE (FFC-117)
207	A-1486-840-A	ZZ-005 BOARD, COMPLETE

Ref. No.	Part No.	Description
△*BH7001	1-756-615-51	HOLDER, BATTERY (Note)
△BT7001	1-756-134-12	BATTERY, STORAGE, LITHIUM (Note)
#49	2-630-005-31	SCREW (M2), NEW TRUSTER, P2 (Black)
#50	2-891-494-11	SCREW (M2), NEW TRUSTER, P2 (Red)
#53	3-080-206-21	SCREW, TAPPING, P2 (Black)
#119	7-627-556-58	SCREW +P 2.6X5 (Black)

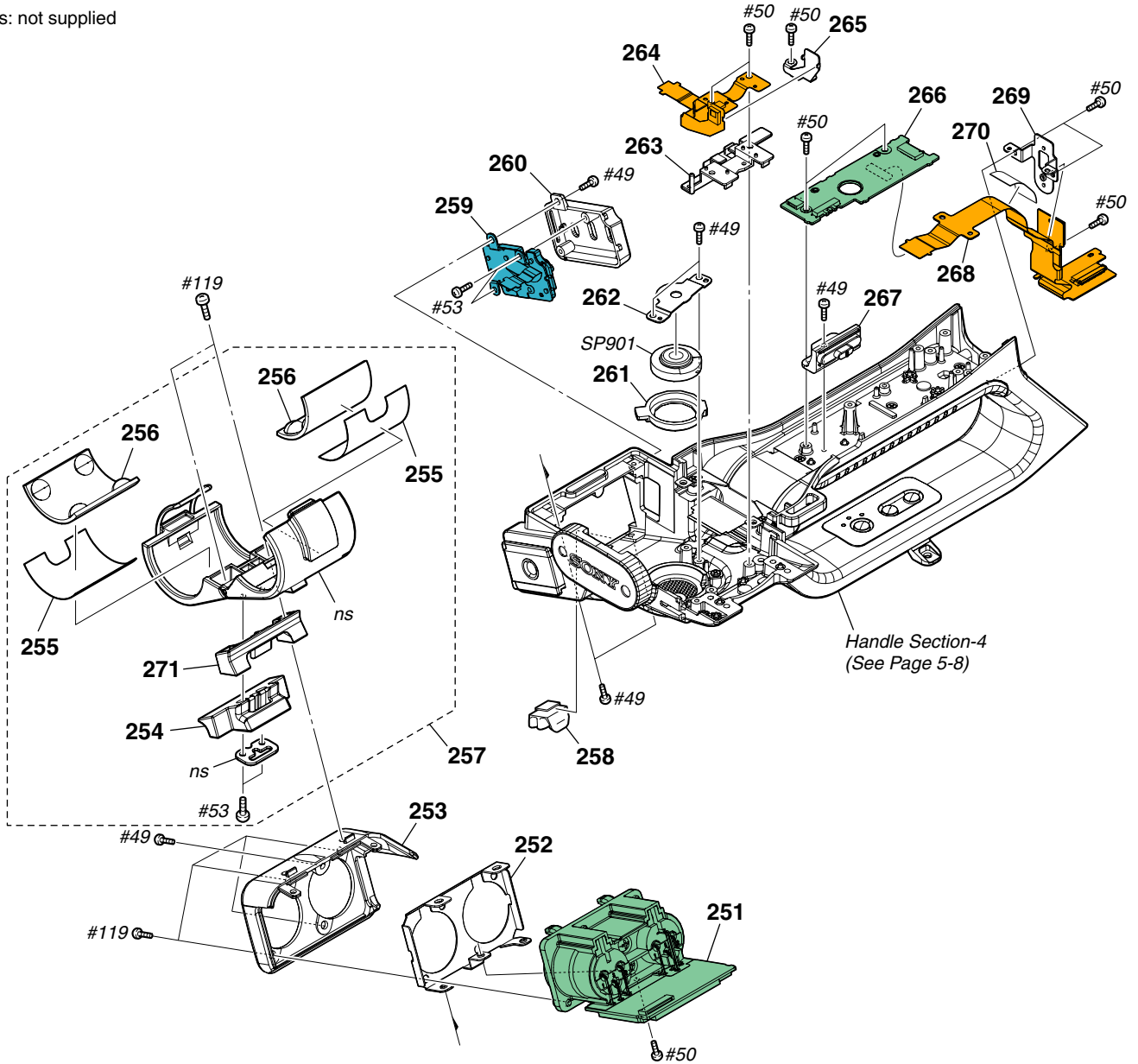
▶ : BT7001 (BATTERY, STORAGE, LITHIUM)
 Board on the mount position.
 (See page 4-77)

5. REPAIR PARTS LIST

HARDWARE LIST

5-1-6. HANDLE SECTION-3

ns: not supplied



Ref. No.	Part No.	Description
251	A-1486-835-A	XX-016 BOARD, COMPLETE
* 252	3-288-536-01	FLAME, XL
253	3-288-535-01	CABINET, XL
254	3-284-074-01	RUBBER, MICROPHONE HOLDER
255	3-284-081-01	SHEET, RUBBER ADHESIVE
256	3-284-080-01	RUBBER, MICROPHONE
257	X-2187-986-1	HOLDER ASSY, MICROPHONE
258	2-892-095-01	CLAMP, CABLE
259	1-480-299-11	SWITCH BLOCK, CONTROL (AS92000)
260	3-288-541-01	CABINET, AS
261	2-178-550-01	HOLDER, SPEAKER
262	X-2188-608-1	RETAINER ASSY, SPEAKER
* 263	3-288-539-01	HOLDER, FLEXIBLE
264	A-1486-854-A	FP-759 FLEXIBLE BOARD, COMPLETE

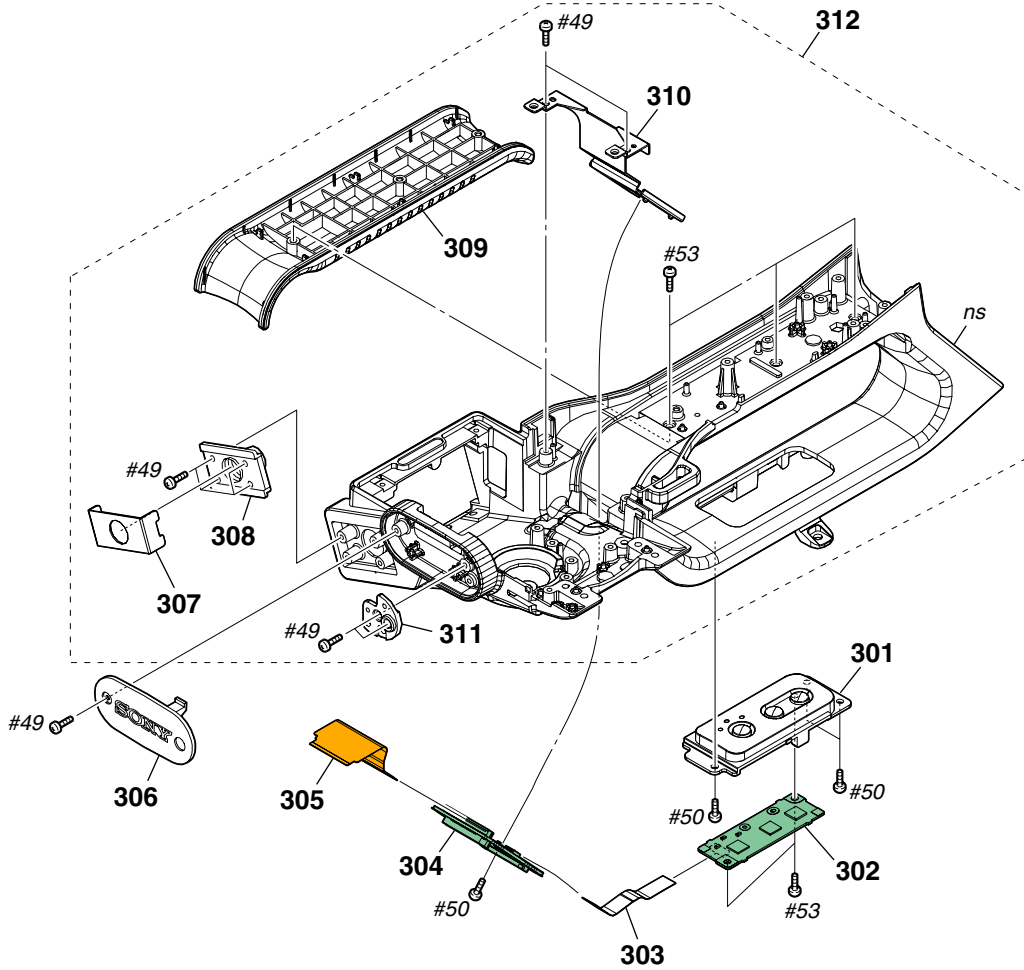
Ref. No.	Part No.	Description
265	X-2188-609-1	FIXED (759) ASSY
266	A-1486-844-A	GG-005 BOARD, COMPLETE
267	X-2188-599-1	KNOB ASSY, ZOOM SELECTION
268	A-1486-853-A	FP-757 FLEXIBLE BOARD, COMPLETE
* 269	3-288-537-01	PLATE, REAR TALLY FIXED
* 270	3-398-545-01	SHEET (VF), SHIELD
271	3-284-075-01	COVER, MICROPHONE HOLDER RUBBER
SP901	1-825-968-11	LOUDSPEAKER (1.8CM)
#49	2-630-005-31	SCREW (M2), NEW TRUSTER, P2 (Black)
#50	2-891-494-11	SCREW (M2), NEW TRUSTER, P2 (Red)
#53	3-080-206-21	SCREW, TAPPING, P2 (Black)
#119	7-627-556-58	SCREW +P 2.6X5 (Black)

5. REPAIR PARTS LIST

HARDWARE LIST

5-1-7. HANDLE SECTION-4

ns: not supplied



Ref. No.	Part No.	Description
301	X-2188-602-1	CABINET ASSY, ST
302	A-1486-843-A	SS-182 BOARD, COMPLETE
303	1-834-243-11	FLEXIBLE FLAT CABLE (FFC-115)
304	A-1486-839-A	YY-005 BOARD, COMPLETE
305	1-873-730-11	FP-773 FLEXIBLE BOARD
306	X-2188-598-1	LID ASSY, FRONT
307	2-178-568-01	COVER, ACCESSORY FITTING WASHER
308	2-178-567-01	WASHER, ACCESSORY FITTING

Ref. No.	Part No.	Description
309	3-288-471-01	CABINET (LOWER), HANDLE
310	3-288-472-01	PLATE, YY FIXED
311	3-288-473-01	BASE, SHOE FITTING
312	X-2188-597-1	HANDLE ASSY
#49	2-630-005-31	SCREW (M2), NEW TRUSTER, P2 (Black)
#50	2-891-494-11	SCREW (M2), NEW TRUSTER, P2 (Red)
#53	3-080-206-21	SCREW, TAPPING, P2 (Black)

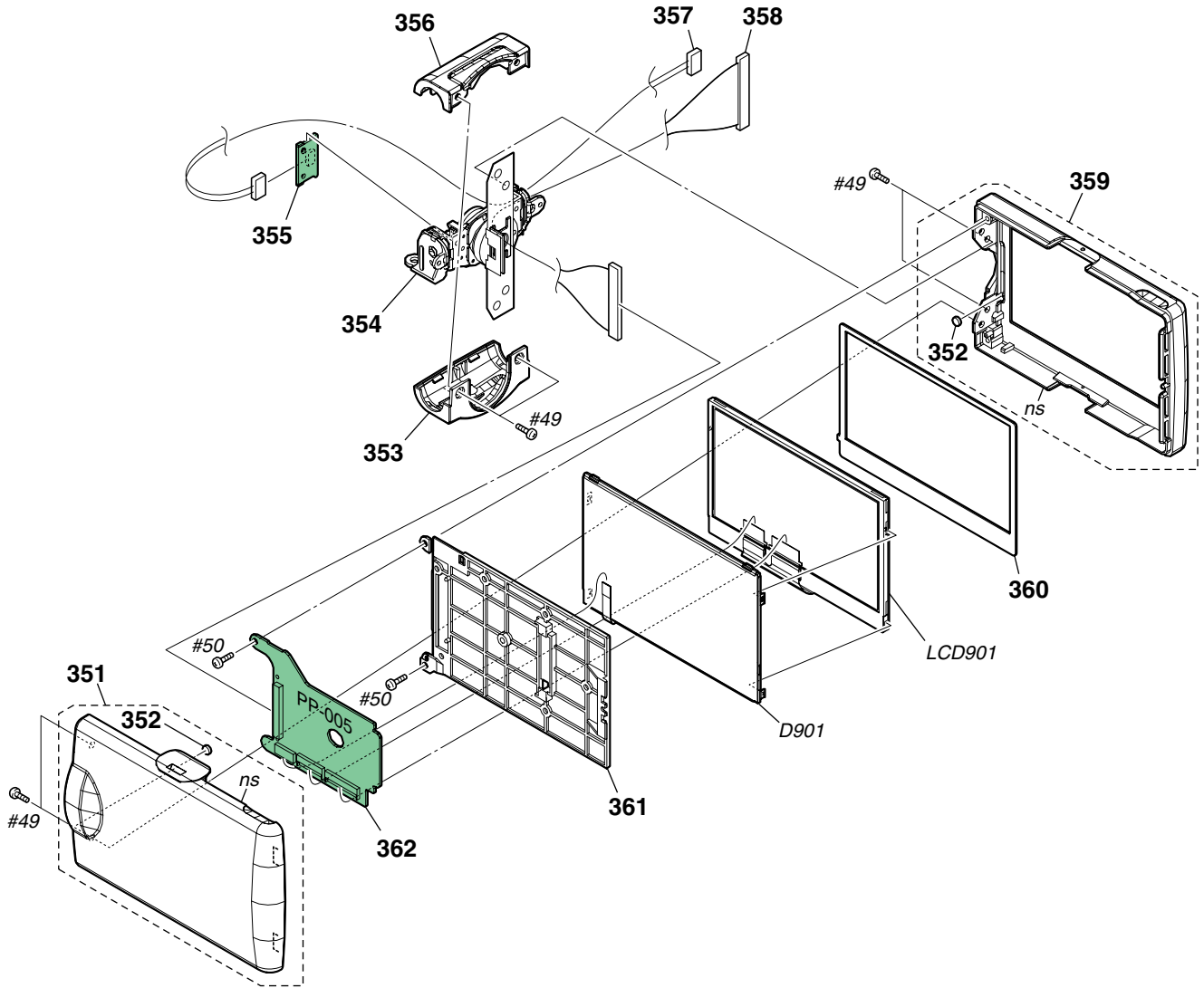
5. REPAIR PARTS LIST

DISASSEMBLY

HARDWARE LIST

5-1-8. LCD SECTION

ns: not supplied



Ref. No.	Part No.	Description
351	X-2188-612-1	CABINET (UPPER) ASSY, PANEL
352	1-471-278-11	MAGNET
353	3-288-566-01	CABINET (T), PANEL HINGE
354	X-2188-610-1	HINGE ASSY, PANEL
355	A-1486-842-A	HH-008 BOARD, COMPLETE
356	3-288-567-01	CABINET (B), PANEL HINGE
357	1-963-030-21	HARNESS (SW-116)
358	1-964-790-21	HARNESS (PR-074)
359	X-2188-613-1	CABINET (LOWER) ASSY, PANEL

Ref. No.	Part No.	Description
360	3-288-565-01	CUSHION, PANEL
361	X-2188-611-1	FRAME ASSY, BL
362	A-1486-836-A	PP-005 BOARD, COMPLETE
D901	1-480-358-11	BLOCK, LIGHT GUIDE PLATE (3.2)
LCD901	1-802-590-11	INDICATOR MODULE, LIQUIDCRYSTAL
#49	2-630-005-31	SCREW (M2), NEW TRUSTER, P2 (Black)
#50	2-891-494-11	SCREW (M2), NEW TRUSTER, P2 (Red)

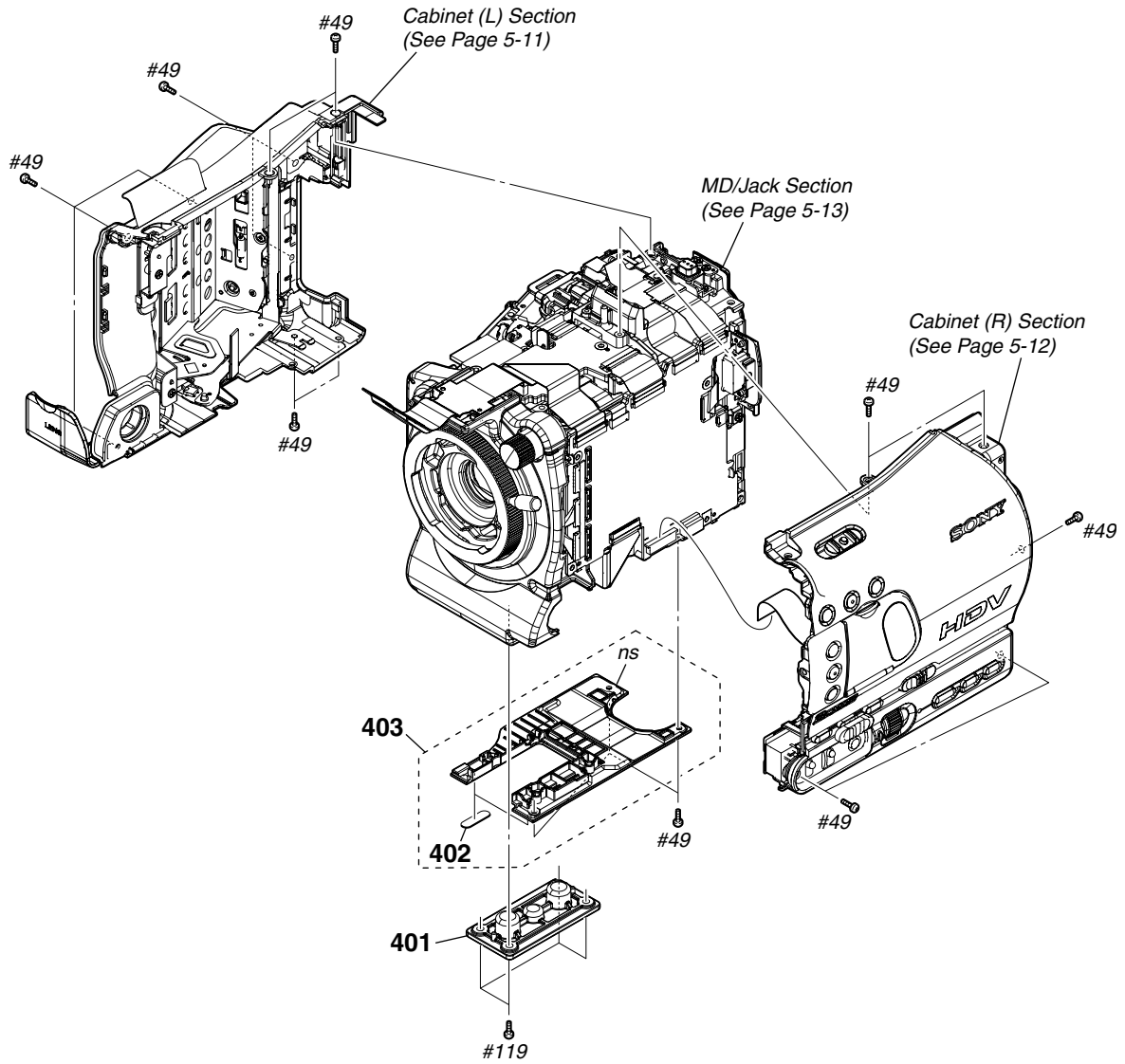
5. REPAIR PARTS LIST

DISASSEMBLY

HARDWARE LIST

5-1-9. OVERALL SECTION-2

ns: not supplied



Ref. No.	Part No.	Description
401	3-288-392-01	WASHER (D), TRIPOD
402	2-178-805-01	FOOT, RUBBER
403	X-2188-586-1	CABINET ASSY, BOTTOM

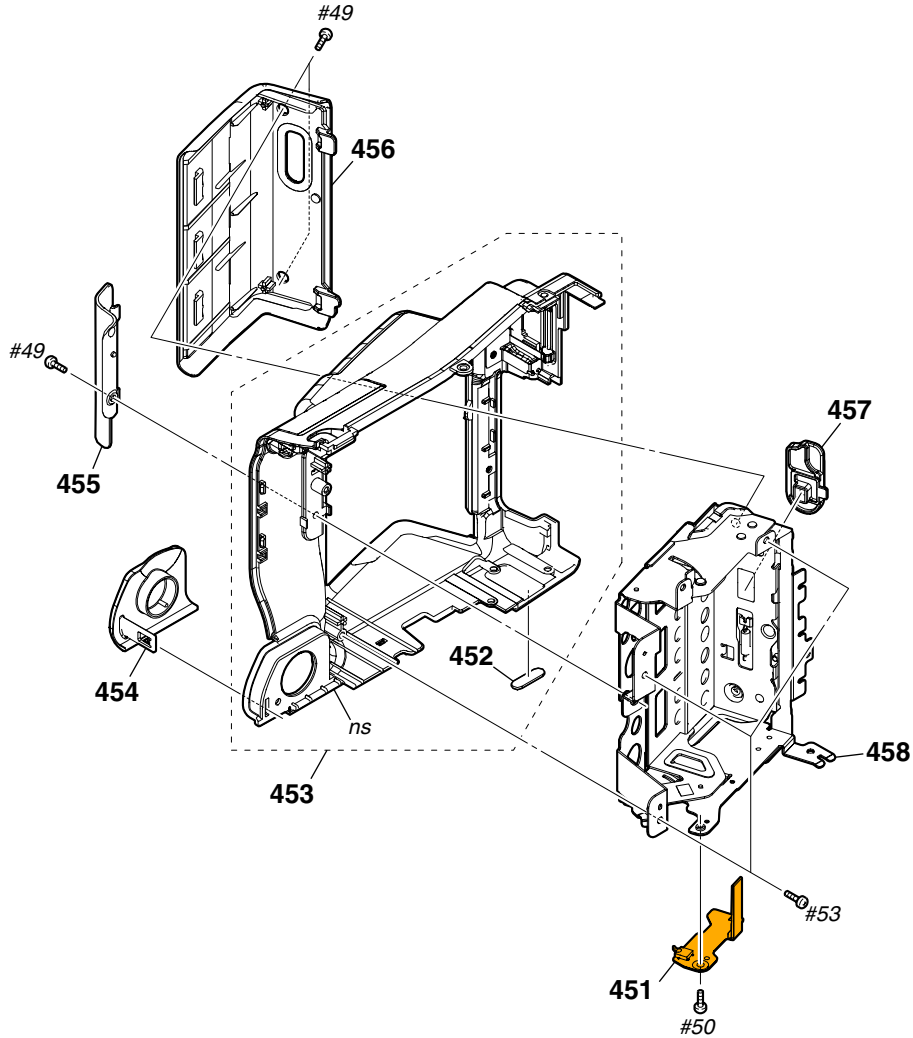
Ref. No.	Part No.	Description
#49	2-630-005-31	SCREW (M2), NEW TRUSTER, P2 (Black)
#119	7-627-556-58	SCREW +P 2.6X5 (Black)

5. REPAIR PARTS LIST

HARDWARE LIST

5-1-10. CABINET (L) SECTION

ns: not supplied



Ref. No.	Part No.	Description
451	A-1486-852-A	FP-756 FLEXIBLE BOARD, COMPLETE
452	2-178-805-01	FOOT, RUBBER
453	X-2188-594-1	CABINET (L) ASSY
* 454	3-288-458-01	LID, ENG CONNECTOR
455	3-288-461-01	COVER, MD ADJUSTMENT
456	3-288-459-01	LID, CASSETTE

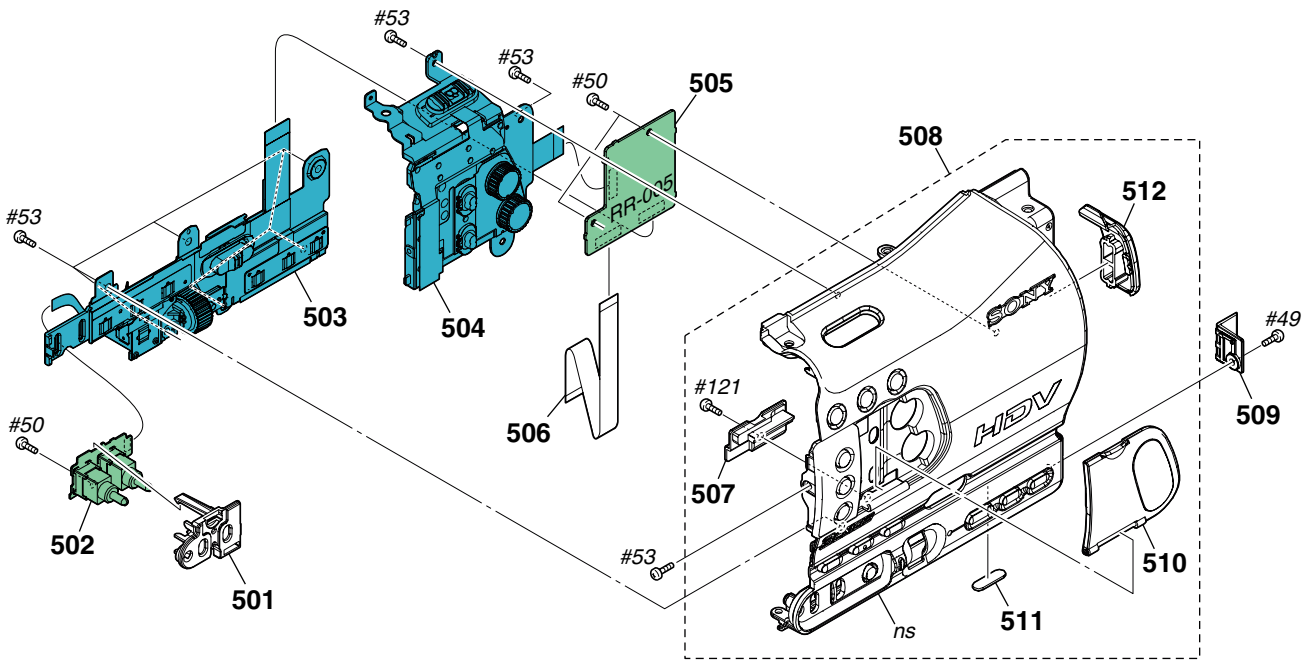
Ref. No.	Part No.	Description
457	3-288-460-01	KNOB, EJECT
458	X-2188-595-1	FRAME ASSY, CS
#49	2-630-005-31	SCREW (M2), NEW TRUSTER, P2 (Black)
#50	2-891-494-11	SCREW (M2), NEW TRUSTER, P2 (Red)
#53	3-080-206-21	SCREW, TAPPING, P2 (Black)

5. REPAIR PARTS LIST

HARDWARE LIST

5-1-11. CABINET (R) SECTION

ns: not supplied



Ref. No.	Part No.	Description
501	3-288-437-01	COVER, KK
502	A-1486-849-A	KK-032 BOARD, COMPLETE
503	1-480-297-11	SWITCH BLOCK, CONTROL (RS92000)
504	1-480-296-11	SWITCH BLOCK, CONTROL (PS92000)
505	A-1486-845-A	RR-005 BOARD, COMPLETE
506	1-834-239-11	FLEXIBLE FLAT CABLE (FFC-111)
507	3-288-426-01	RETAINER, AL SHAFT
508	X-2188-593-1	CABINET (R) ASSY
509	3-288-397-01	COVER, INSPECTION TERMINAL

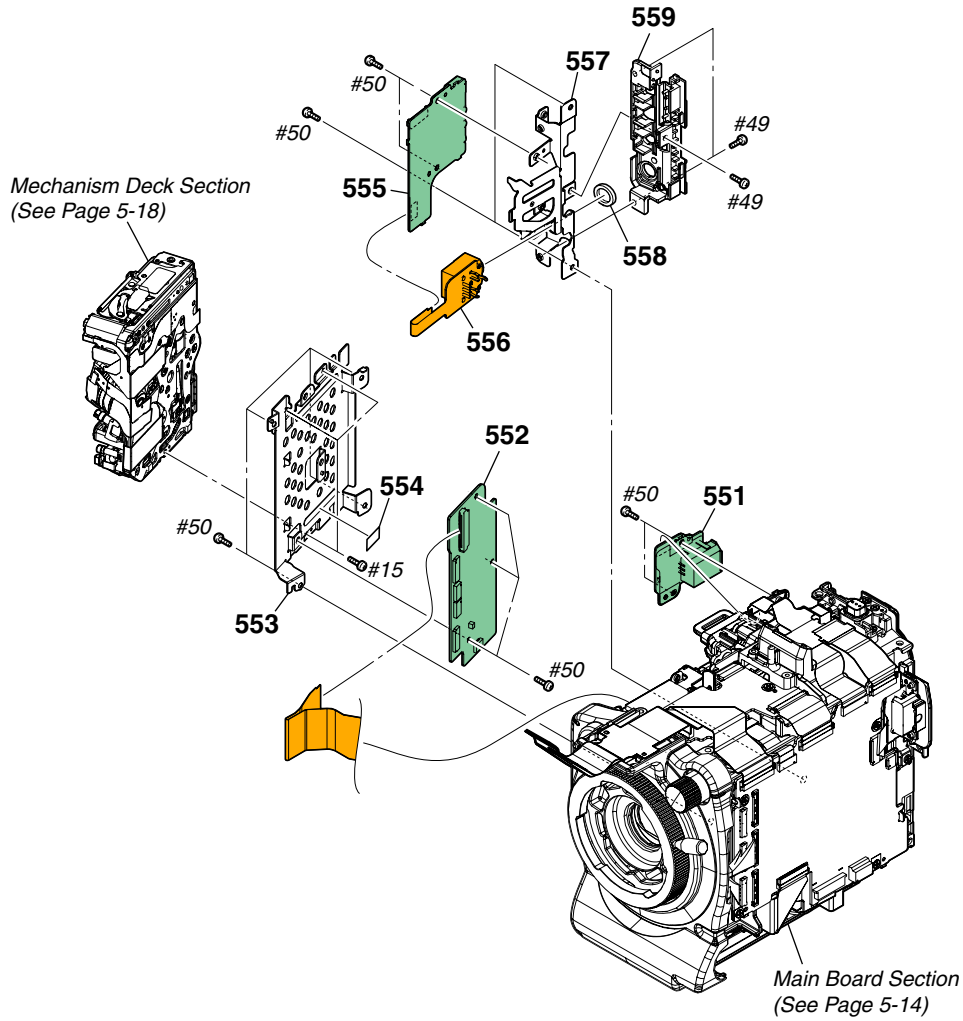
Ref. No.	Part No.	Description
510	X-2189-669-1	LID ASSY, AL
511	2-178-805-01	FOOT, RUBBER
512	3-288-438-01	COVER, HM
#49	2-630-005-31	SCREW (M2), NEW TRUSTER, P2 (Black)
#50	2-891-494-11	SCREW (M2), NEW TRUSTER, P2 (Red)
#53	3-080-206-21	SCREW, TAPPING, P2 (Black)
#121	3-080-205-11	SCREW, TAPPING, P2 (Silver)

5. REPAIR PARTS LIST

DISASSEMBLY

HARDWARE LIST

5-1-12. MD/JACK SECTION



Ref. No.	Part No.	Description
551	A-1486-847-A	II-005 BOARD, COMPLETE
552	A-1486-833-A	NN-005 BOARD, COMPLETE
553	X-2188-589-1	FRAME ASSY, MD
* 554	3-291-245-01	SHEET (MD), SHIELD
555	A-1486-846-A	JJ-005 BOARD, COMPLETE
556	A-1217-231-A	FP-486 FLEXIBLE BOARD, COMPLETE

Ref. No.	Part No.	Description
* 557	3-288-469-01	PLATE, JACK
558	3-061-234-01	NUT (M6X0.5)
559	X-2188-596-1	CABINET ASSY, JACK
#15	3-062-214-01	SCREW (M1.4X1.5) (Silver)
#49	2-630-005-31	SCREW (M2), NEW TRUSTER, P2 (Black)
#50	2-891-494-11	SCREW (M2), NEW TRUSTER, P2 (Red)

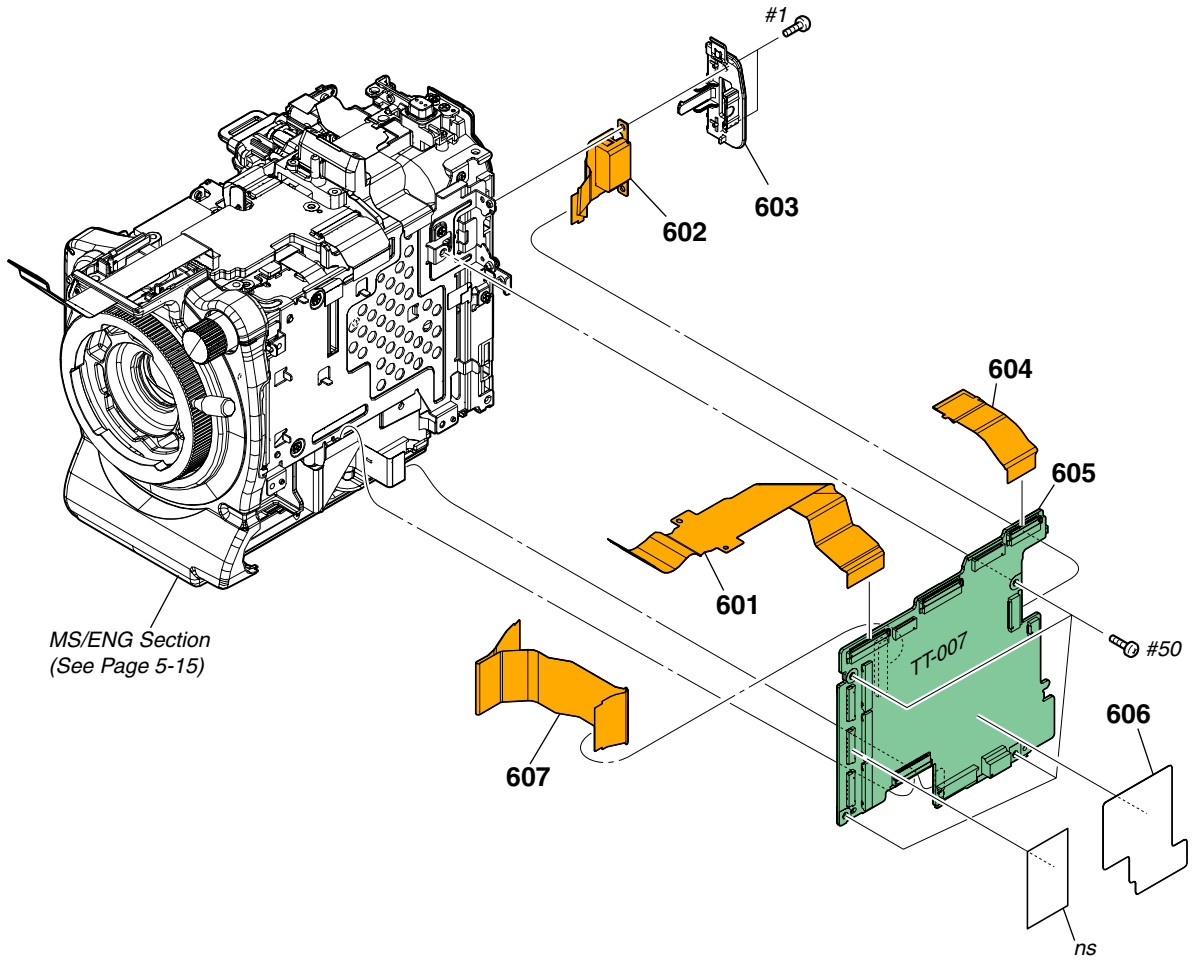
5. REPAIR PARTS LIST

DISASSEMBLY

HARDWARE LIST

5-1-13. MAIN BOARD SECTION

ns: not supplied



Ref. No.	Part No.	Description	Ref. No.	Part No.	Description
601	1-873-724-11	FP-767 FLEXIBLE BOARD	605	A-1494-309-A	TT-007 BOARD, COMPLETE (SERVICE) (PAL: Z7E/Z7P/Z7C)
602	A-1231-941-A	FP-645 FLEXIBLE BOARD, COMPLETE	* 606	3-288-399-01	LABEL, FUSE REPLACEMENT CAUTION
603	3-288-393-01	CLAMP, HDMI	607	1-873-722-11	FP-765 FLEXIBLE BOARD
604	1-873-727-11	FP-770 FLEXIBLE BOARD	#1	2-635-562-11	SCREW (M1.7) (Black)
605	A-1494-308-A	TT-007 BOARD, COMPLETE (SERVICE) (NTSC: Z7J/Z7U/Z7N)	#50	2-891-494-11	SCREW (M2), NEW TRUSTER, P2 (Red)

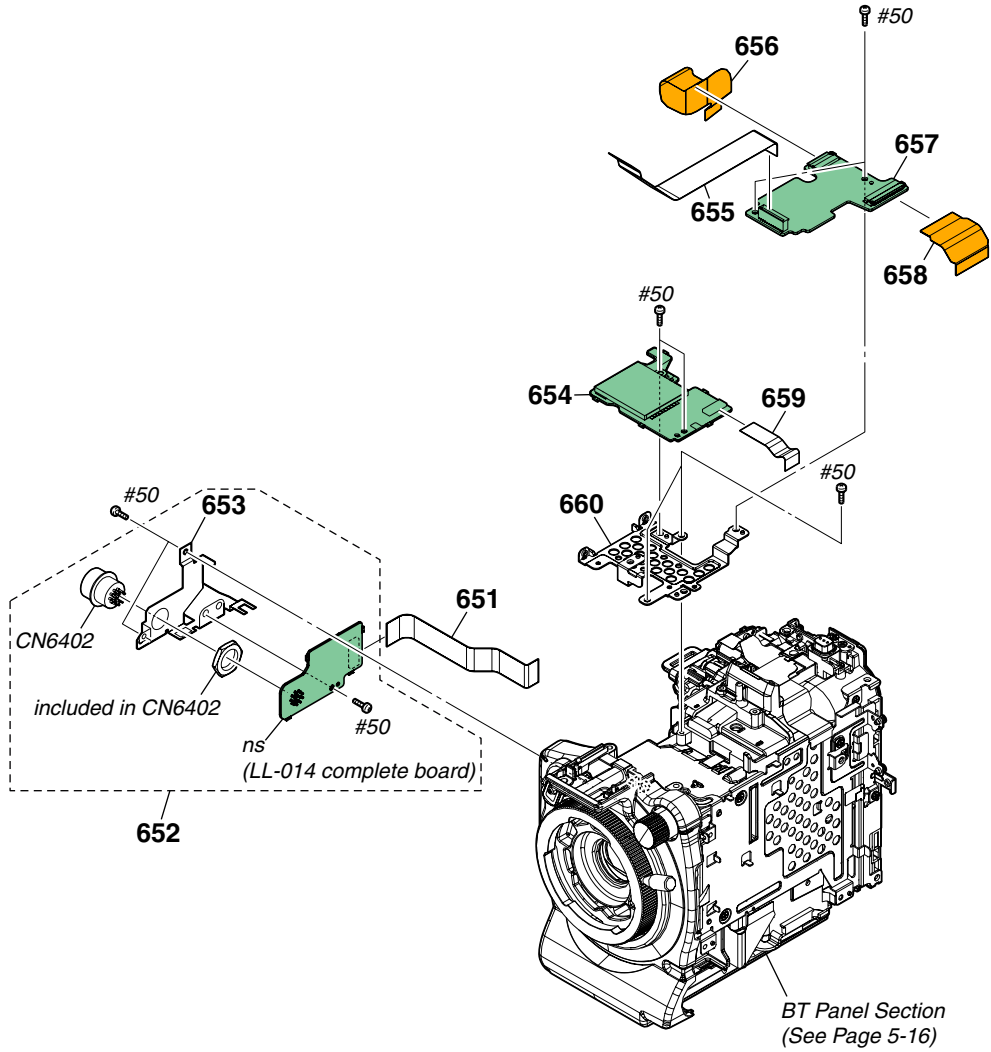
5. REPAIR PARTS LIST

DISASSEMBLY

HARDWARE LIST

5-1-14. MS/ENG SECTION

ns: not supplied



Ref. No.	Part No.	Description
651	1-834-239-11	FLEXIBLE FLAT CABLE (FFC-111)
652	A-1544-576-A	ENG ASSY (SERVICE) (including LL-014 complete board)
* 653	3-288-395-01	PLATE, ENG FIXED
654	A-1486-848-A	WW-005 BOARD, COMPLETE
655	1-834-242-11	FLEXIBLE FLAT CABLE (FFC-114)
656	1-873-731-11	FP-774 FLEXIBLE BOARD

Ref. No.	Part No.	Description
657	A-1486-834-A	OO-006 BOARD, COMPLETE
658	1-873-725-11	FP-768 FLEXIBLE BOARD
659	1-834-240-11	FLEXIBLE FLAT CABLE (FFC-112)
* 660	3-288-394-01	PLATE, MS FIXED
CN6402	1-562-221-31	CONNECTOR (ROUND TYPE) (R-F) 12P
#50	2-891-494-11	SCREW (M2), NEW TRUSTER, P2 (Red)

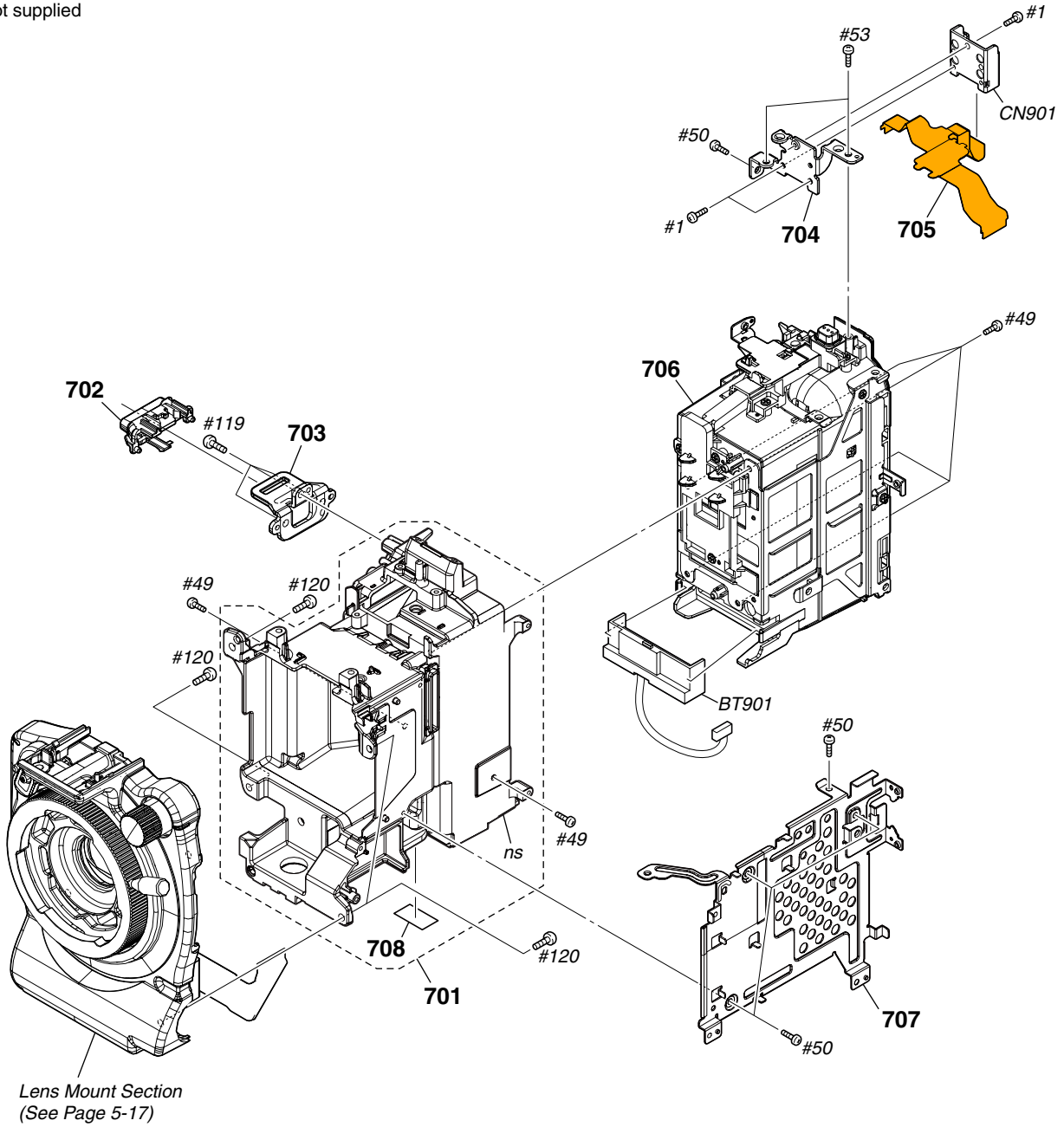
5. REPAIR PARTS LIST

DISASSEMBLY

HARDWARE LIST

5-1-15. BT PANEL SECTION

ns: not supplied



• Refer to page 5-1 for mark △.

Ref. No.	Part No.	Description
701	X-2188-585-1	CHASSIS ASSY, CENTER
702	3-288-391-01	CABINET, STRAP
703	3-288-390-01	SHEET METAL, STRAP
* 704	3-288-400-01	BRACKET, CF SHOE
705	1-873-729-11	FP-772 FLEXIBLE BOARD
706	X-2188-587-1	PANEL ASSY, BT
* 707	3-288-389-01	FRAME, MAIN
708	2-590-635-01	TAPE (AS 1/2)
△ BT901	1-694-411-12	TERMINAL BOARD, BATTERY

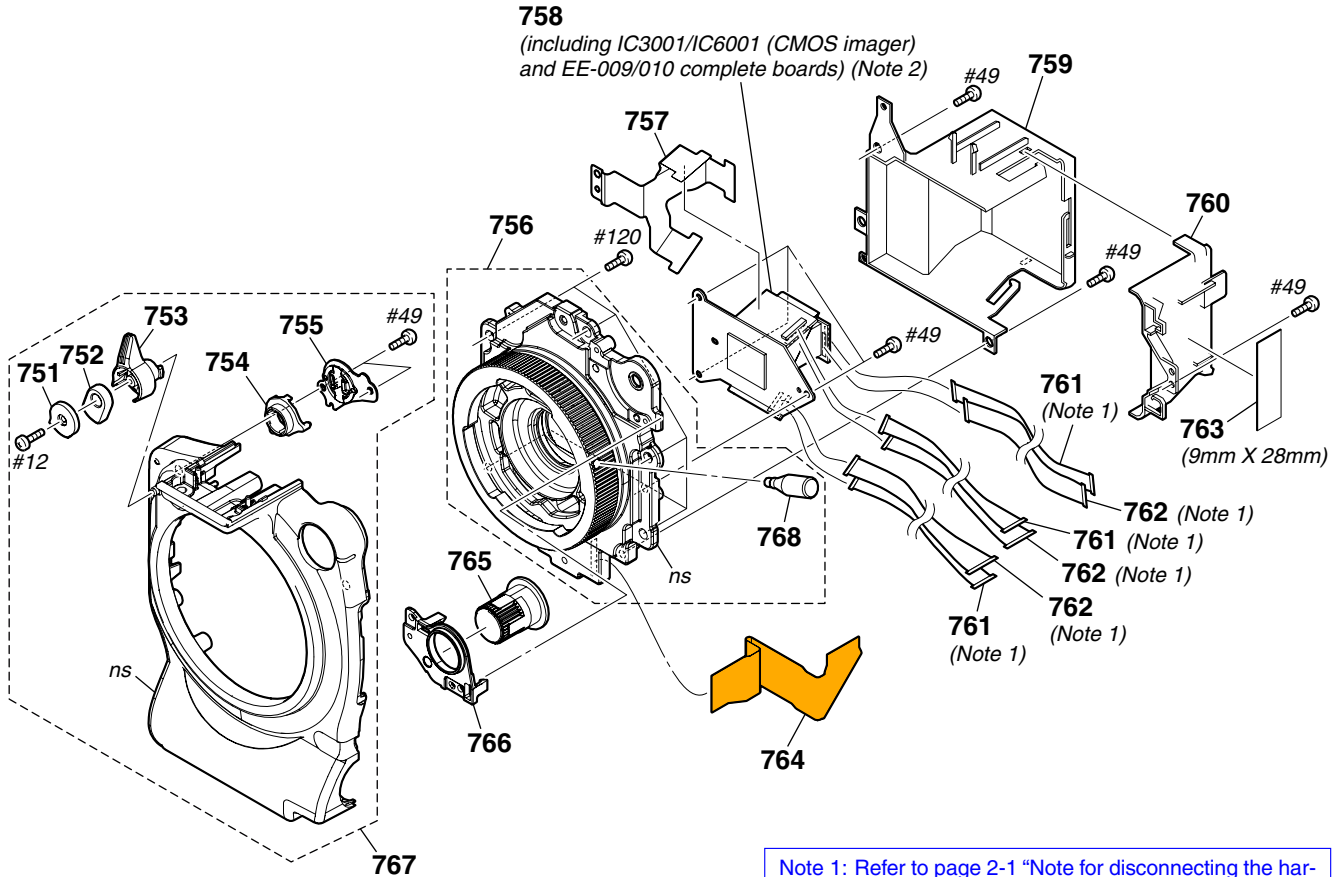
Ref. No.	Part No.	Description
CN901	1-818-890-21	CONNECTOR, EXTERNAL (HOT SHOE)
#1	2-635-562-11	SCREW (M1.7) (Black)
#49	2-630-005-31	SCREW (M2), NEW TRUSTER, P2 (Black)
#50	2-891-494-11	SCREW (M2), NEW TRUSTER, P2 (Red)
#53	3-080-206-21	SCREW, TAPPING, P2 (Black)
#119	7-627-556-58	SCREW +P 2.6X5 (Black)
#120	7-621-770-67	SCREW +B 2.6X6 (Silver)

5. REPAIR PARTS LIST

HARDWARE LIST

5-1-16. LENS MOUNT SECTION

ns: not supplied



CAUTION:
For the part of 763, cut SHEET, LENS FLEXIBLE (3-052-196-01) into the desired length and use it.

CAUTION:
763番は、レンズフレキシット(3-052-196-01)を切って使用。

Note 1: Refer to page 2-1 "Note for disconnecting the harness (coaxial cable)" when changing the harness (coaxial cable).

Note 1: ハーネス (coaxial cable) の交換時は2-1ページの "Note for disconnecting the harness (coaxial cable)" を参照してください。

Note 2: Be sure to read "Precautions for Replacement of Imager" on page 4-3 when changing the imager.

Note 2: イメージャの交換時は4-4ページの "イメージャ交換時の注意" を必ずお読みください。

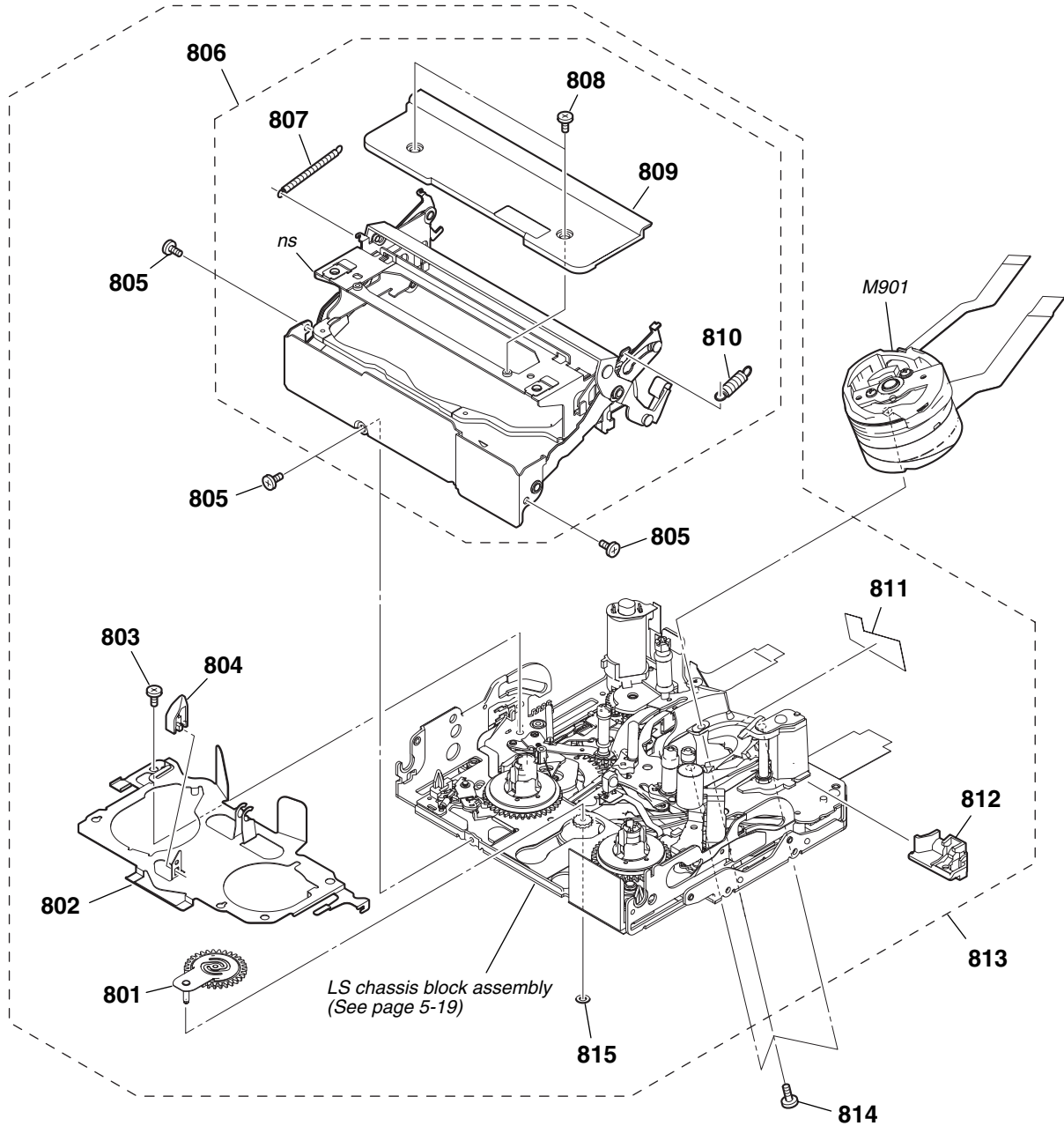
Ref. No.	Part No.	Description
751	3-288-407-01	LID (Y), KNOB
752	3-288-408-01	STOPPER (Y)
753	3-288-406-01	KNOB (Y)
754	3-288-405-01	GUIDE (Y)
755	X-2188-592-1	PLATE ASSY, CLICK
756	1-788-732-11	MOUNT, CAMERA (TZ253B)
757	3-291-246-01	HEAT SINK, CMOS
758	A-1494-846-A	DEVICE, PRISM (SERVICE) (including IC3001/IC6001 (CMOS imager) and EE-009/010 complete boards) (Note 2)
* 759	3-288-415-01	CABINET (A), LIGHT INTERCEPTION
* 760	3-288-416-01	CABINET (B), LIGHT INTERCEPTION

Ref. No.	Part No.	Description
761	1-963-577-41	HARNESS (COAXIAL CABLE) (20 PIN) (Note 1)
762	1-965-937-11	HARNESS (COAXIAL CABLE) (30 PIN) (Note 1)
763	CAUTION	TAPE AS
764	1-873-723-11	FP-766 FLEXIBLE BOARD
765	3-288-413-01	KNOB, ND
* 766	3-288-414-01	HOLDER, ND KNOB
767	X-2188-590-1	CABINET (FRONT) ASSY
768	3-292-379-01	LEVER, MOUNT TUBE
#12	3-080-204-21	SCREW, TAPPING, P2 (Black)
#49	2-630-005-31	SCREW (M2), NEW TRUSTER, P2 (Black)
#120	7-621-770-67	SCREW +B 2.6X6 (Silver)

5. REPAIR PARTS LIST

5-1-17. MECHANISM DECK SECTION

ns: not supplied



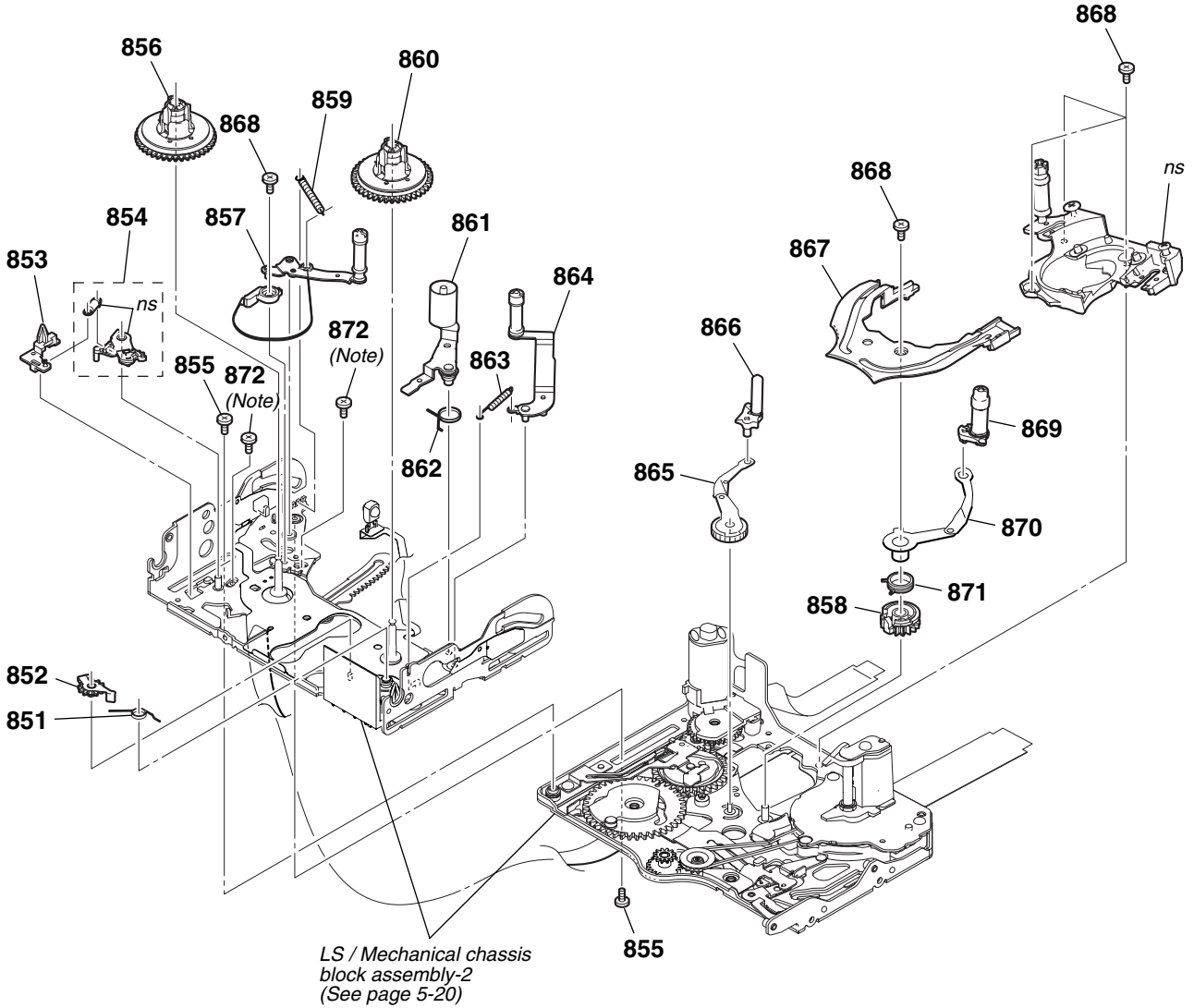
Ref. No.	Part No.	Description
801	X-2024-478-1	PENDULUM ASSY
802	2-342-917-02	BASE, LED
803	7-627-850-77	SCREW, PRECISION +P 1.4X1.8
804	3-079-366-11	RELEASE, REEL LOCK
805	3-703-816-08	SCREW (M1.4X1.4), SPECIAL HEAD
806	X-2024-450-3	CASSETTE COMPARTMENT ASSY
807	2-342-926-01	SPRING (ARM S), TENSION COIL
808	2-546-417-01	SCREW (M1.4)
809	2-342-933-02	PLATE, TOP

Ref. No.	Part No.	Description
810	2-342-927-01	SPRING (ARM T), TENSION COIL
811	2-541-585-01	SHEET, FLEXIBLE ADHESIVE
812	2-342-918-01	TG6 CATCHER
813	A-1437-006-A	MD (N220) SUB ASSY (S) A
814	3-703-816-13	SCREW (M1.4X2.0), SPECIAL HEAD
815	3-315-414-31	WASHER
M901	A-1128-533-A	DRUM (DEH-33B-R)

5. REPAIR PARTS LIST

5-1-18. LS/MECHANICAL CHASSIS BLOCK ASSEMBLY-1

ns: not supplied



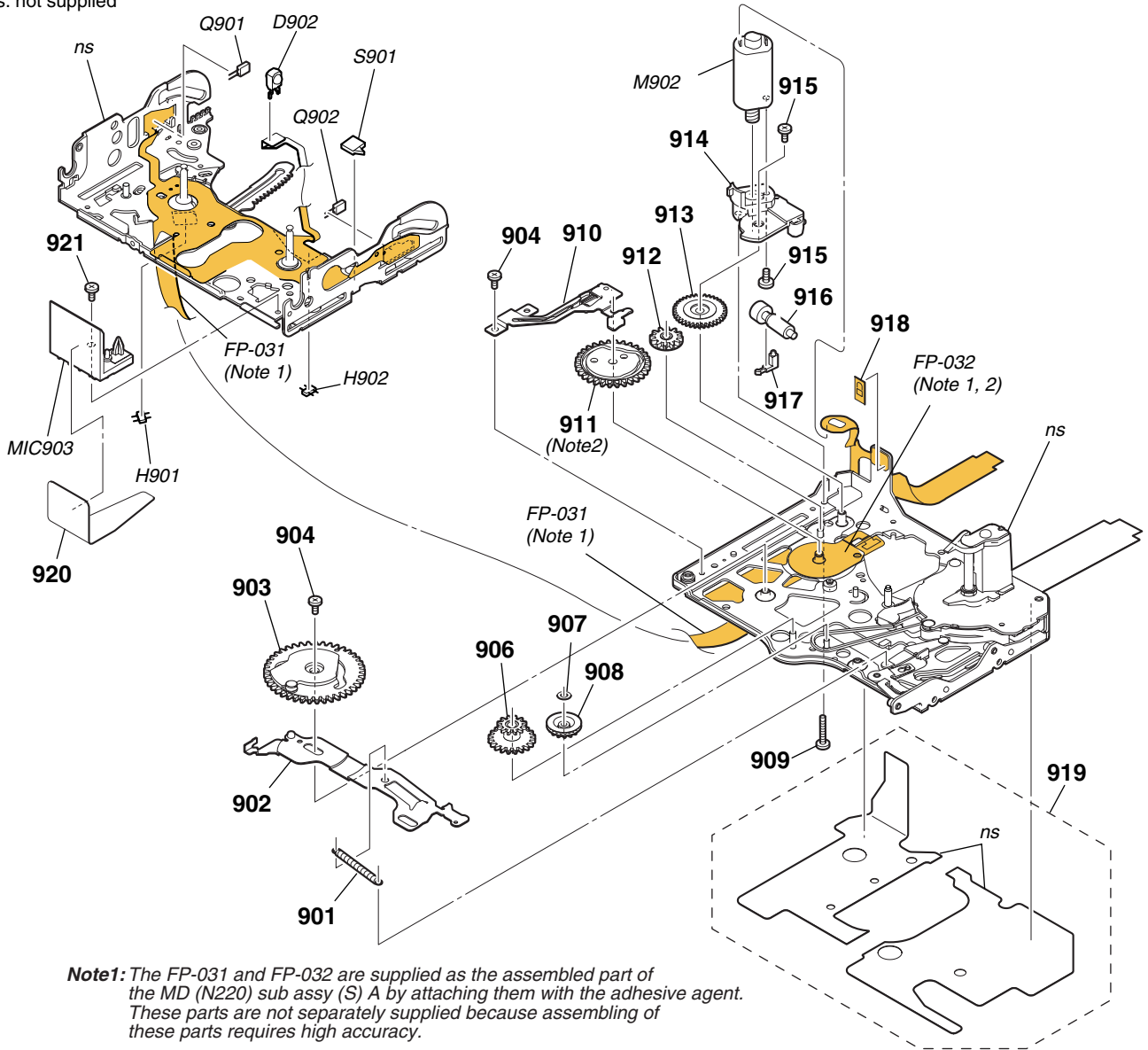
Note: These two screws are the fixing screws of the LS cam plate.
 These two fixing screws are used for adjusting the LS cam plate position.
 (refer to 4-2. LS cam adjustment of 6-2. MECHANISM SECTION ADJUSTMENTS)

Ref. No.	Part No.	Description	Ref. No.	Part No.	Description
851	2-342-759-01	SPRING, RVS BRAKE	863	2-342-626-01	SPRING (TG6 RETURN), COIL
852	A-1083-005-A	BRAKE BLOCK ASSY, RVS	864	A-1083-002-A	TG6 BLOCK ASSY
853	2-342-731-01	POSITIONING (S)	865	X-2024-468-1	ARM (S) ASSY, GL
854	A-1083-006-A	BRAKE BLOCK ASSY, S	866	X-2024-465-1	COASTER (S) ASSY
855	3-075-097-11	SCREW (M1.4X1.4), SPECIAL HEAD	867	2-342-612-01	RAIL
856	X-2067-290-1	TABLE ASSY, S REEL	868	3-703-816-13	SCREW (M1.4X2.0), SPECIAL HEAD
857	A-1132-279-A	REGULATOR BLOCK ASSY, TENSION	869	X-2024-466-1	COASTER (T) ASSY
858	2-342-705-01	GEAR (T), GL	870	X-2024-469-1	ARM (T) ASSY, GL
859	2-342-902-01	SPRING, TENSION REGULATOR	871	2-342-716-01	SPRING (T), GL TORSION
860	X-2067-291-1	TABLE ASSY, T REEL	872	3-703-816-08	SCREW (M1.4X1.4), SPECIAL HEAD (for adjustment)
861	X-2067-295-4	ARM ASSY, PINCH			
862	2-342-906-01	SPRING (PINCH RETURN), TORSION			

5. REPAIR PARTS LIST

5-1-19. LS/MECHANICAL CHASSIS BLOCK ASSEMBLY-2

ns: not supplied



Note1: The FP-031 and FP-032 are supplied as the assembled part of the MD (N220) sub assy (S) A by attaching them with the adhesive agent. These parts are not separately supplied because assembling of these parts requires high accuracy.

Note2: The mode switch (S903) function works when the contactor of the FP-032 contacts with the bottom surface of wiper of the mode gear assy.

Ref. No.	Part No.	Description	Ref. No.	Part No.	Description
901	2-342-624-01	SPRING (PINCH LIMITER), COIL	917	2-637-947-01	BASE, MOTOR HOLDER
902	X-2024-463-2	SLIDER ASSY, MODE	918	1-677-049-11	FP-228 FLEXIBLE BOARD (DEW SENSOR)
903	X-2024-462-1	GEAR ASSY, CAM	919	2-342-686-01	COVER, CAPSTAN
904	3-075-097-11	SCREW (M1.4X1.4), SPECIAL HEAD	920	2-541-984-01	MIC COVER
906	2-342-621-01	GEAR, RELAY	921	3-703-816-13	SCREW (M1.4X2.0), SPECIAL HEAD
907	3-315-414-31	WASHER	D902	6-500-652-01	DIODE GL453SE0000F (TAPE LED)
908	2-342-620-01	GEAR, CONVERSION	H901	8-719-067-74	ELEMENT, HOLE HW-105A-CDE-T (S REEL)
909	3-084-377-01	HEAD (SCREW M1.2)	H902	8-719-067-74	ELEMENT, HOLE HW-105A-CDE-T (T REEL)
910	X-2024-460-1	BASE ASSY, CAM	M902	X-2024-464-1	MOTOR ASSY (LOADING)
911	X-2024-461-1	GEAR ASSY, MODE	MIC903	1-818-576-11	PIN, CONNECTOR (WITH DETECTION)
912	2-342-615-01	GEAR, NO.2	Q901	6-550-672-01	TRANSISTOR PT4850FJE00F (TAPE END)
913	2-342-691-01	GEAR, NO.1	Q902	6-550-672-01	TRANSISTOR PT4850FJE00F (TAPE TOP)
914	2-637-945-01	HOLDER, MOTOR	S901	1-786-448-22	SWITCH, PUSH (1 KEY) (CC DOWN)
915	3-895-822-71	SCREW (M1.2X2), SPECIAL, 0			
916	2-342-689-01	SHAFT (2J), WORM			

Ver. 1.1 2008.02

The changed portions from Ver. 1.0 are shown in blue.

• EXCEPT J MODEL

Checking supplied accessories.

to J MODEL

Note 1: This item is supplied with the unit as an accessory, but is not prepared as a service part.

Note 2: Refer to following service manual when you repair.

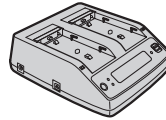
- Memory Recording Unit
HVR-MRC1 Service Manual (9-852-266-1□)



Carl Zeiss Lens
VCL-412BWH
(Refer to page 5-3)



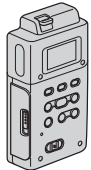
Large Eyecup
2-892-124-01



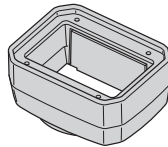
AC Adaptor/Charger
AC-VQ1050
△ 1-479-580-12



Wireless Remote Commander
RMT-831
1-478-495-41



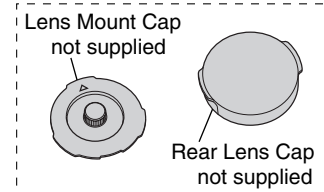
Memory Recording Unit
HVR-MRC1
(Note 2)



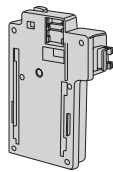
Lens Hood with Lens Cover
X-2188-618-1



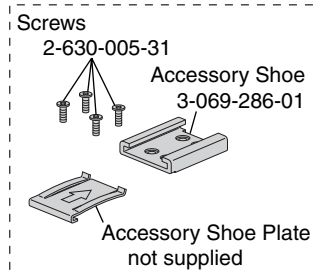
A/V Connecting Cable
1-823-156-51



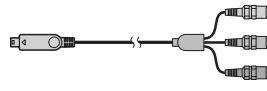
Lens Mount Cap Ass'y
X-2188-940-1



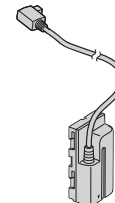
i.LINK Cradle
HVRA-CR1
(Note 2)



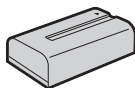
Accessory Shoe Kit
X-2188-877-1



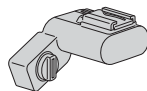
Component Video Cable
1-829-414-61



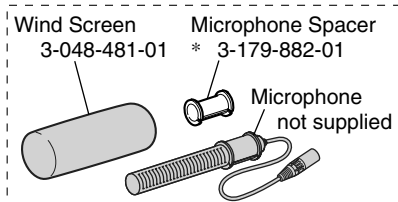
Connecting Cord
DK-415
1-782-361-15



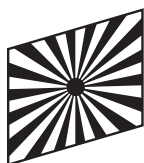
Rechargeable Battery Pack
NP-F570
(Note 1)



Accessory Shoe Adaptor
X-2188-619-1



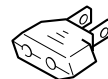
Wind Screen, Microphone
ECM-XM1
1-542-749-11



Test Chart for Flange Focal
Length Adjustment
3-291-529-01



Power Cord
△ 1-790-107-61 (Z7U)
△ 1-824-910-71 (Z7E/Z7N/Z7P)
△ 1-832-121-31 (Z7C)



Conversion (2P) Adaptor
△ 1-569-008-12 (Z7N)

• Refer to page 5-1 for mark △.

Viditec

Humberto 1° 2889 - C1231ACE - Bs As, Argentina
Tel: +54 11 4122-1200 Fax: +54 11 4308-5493

ingenieria@viditec.com.ar
viditec.com