

HXR-MC1500C/MC1500P/MC2000E/ MC2000J/MC2000N/MC2000U

Revision History

SERVICE MANUAL

Ver. 1.0 2010.11



*US Model
Canadian Model
AEP Model
E Model
Chinese Model
Japanese Model*

SERVICE NOTE (Check the following note before the service.)

– ENGLISH –

- 1-1. POWER SUPPLY DURING REPAIRS
- 1-2. PRECAUTION ON REPLACING THE VC-614 BOARD
- 1-3. PRECAUTION ON REPLACING THE MS-452 BOARD
- 1-4. SELF-DIAGNOSIS FUNCTION
- 1-5. METHOD OF COPING WITH SHIFT LENS ERROR

– JAPANESE –

- 1-1. 修理時の電源供給について
- 1-2. VC-614基板交換時の注意
- 1-3. MS-452基板交換時の注意
- 1-4. 自己診断機能
- 1-5. シフトレンズエラーの対処方法

Digital HD Video Camera Recorder



The components identified by mark Δ or dotted line with mark Δ are critical for safety. Replace only with part number specified.

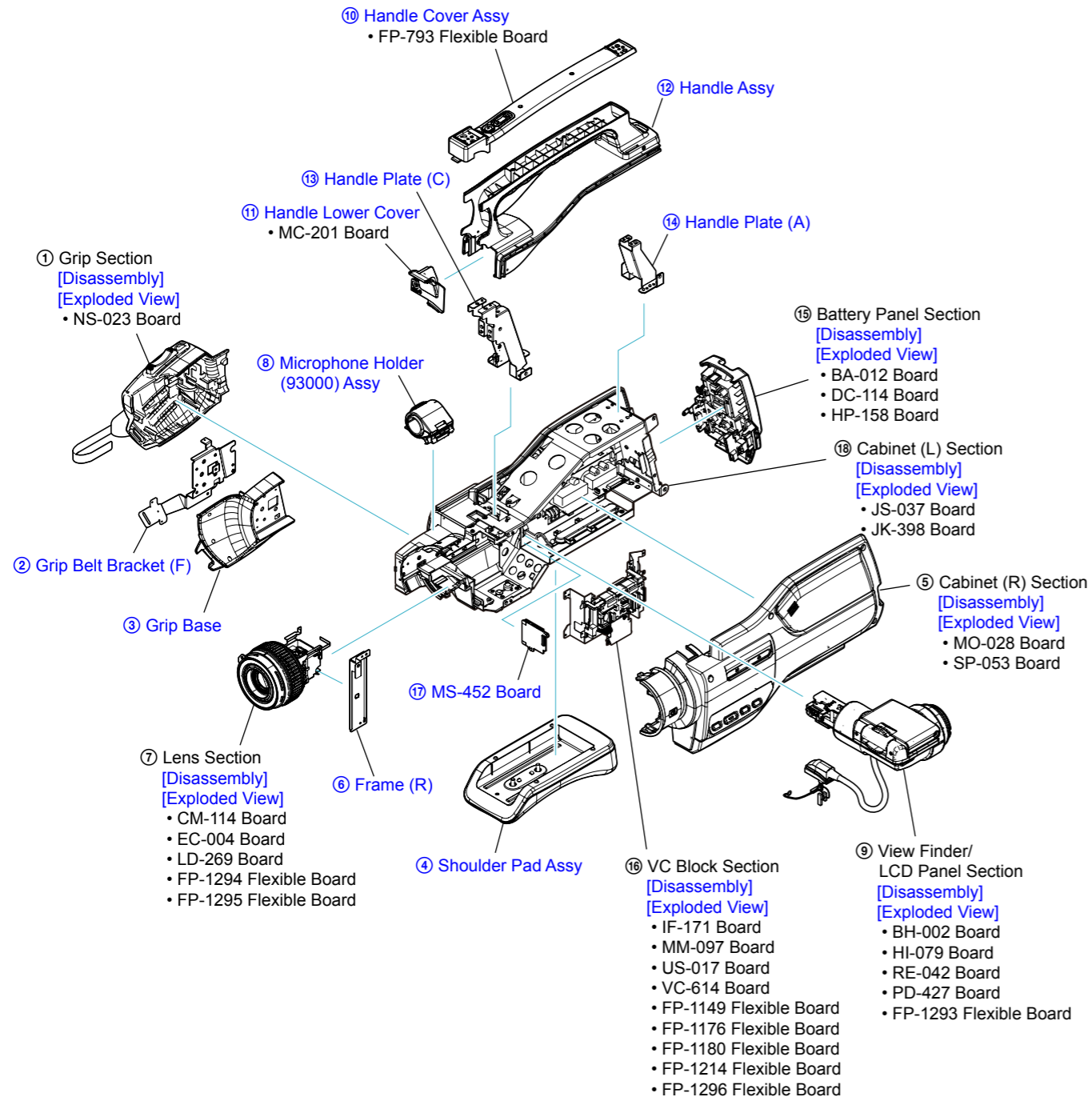
Les composants identifiés par une marque Δ sont critiques pour la sécurité. Ne les remplacer que par une pièce portant le numéro spécifié.

Ver.	Date	History	Contents	S.M. Rev. issued
1.0	2010.11	Official Release	—	—

2. REPAIR PARTS LIST

IDENTIFYING PARTS

Follow the disassembly in the numerical order given.



(ENGLISH)

NOTE:

- -XX, -X mean standardized parts, so they may have some differences from the original one.
- Items marked "*" are not stocked since they are seldom required for routine service. Some delay should be anticipated when ordering these items.
- The mechanical parts with no reference number in the exploded views are not supplied.
- Due to standardization, replacements in the parts list may be different from the parts specified in the diagrams or the components used on the set.
- CAPACITORS:
uF: μ F
- COILS
uH: μ H
- RESISTORS
All resistors are in ohms.
METAL: metal-film resistor
METAL OXIDE: Metal Oxide-film resistor
F: nonflammable
- SEMICONDUCTORS
In each case, u: μ , for example:
uA...: μ A..., uPA..., μ PA...,
uPB..., μ PB..., μ PC..., μ PC...,
uPD..., μ PD...

(JAPANESE)

【使用上の注意】

- ここに記載されている部品は、補修用部品であるため、回路図及びセットに付いている部品と異なる場合があります。
- -XX, -Xは標準化部品のため、セットに付いている部品と異なる場合があります。
- *印の部品は常備在庫していません。
- コンデンサの単位でuFは μ Fを示します。
- 抵抗の単位 Ω は省略してあります。
金 被：金属被膜抵抗。
サンキン：酸化金属被膜抵抗。
- インダクタの単位でuHは μ Hを示します。
- 半導体の名称でuA..., uPA..., uPB..., uPC..., uPD...等はそれぞれ μ A..., μ PA..., μ PB..., μ PC..., μ PD...を示します。

• Abbreviation

- CH : Chinese model
- CND : Canadian model
- J : Japanese model

The components identified by mark \triangle or dotted line with mark \triangle are critical for safety.
Replace only with part number specified.

Les composants identifiés par une marque \triangle sont critiques pour la sécurité.
Ne les remplacer que par une pièce portant le numéro spécifié.

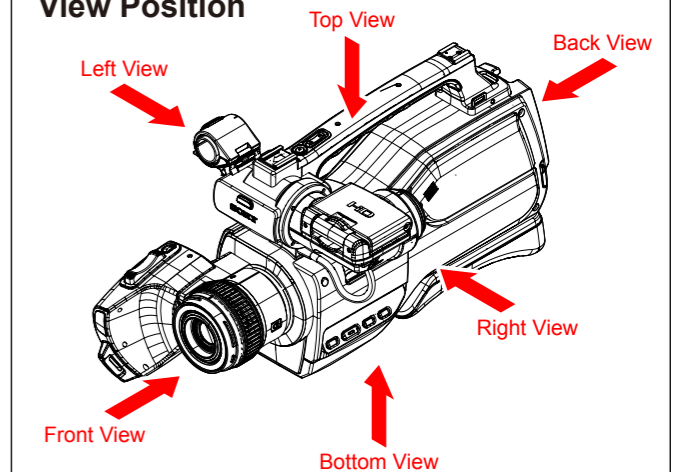
- Color Indication of Appearance Parts
Example:
(SILVER): Cabinet's Color
(Silver) : Parts Color

お願い
図面番号で部品を指定するときは基板名又はブロックを併せて指定してください。

\triangle 印の部品、または \triangle 印付の点線で囲まれた部品は、安全性を維持するために、重要な部品です。
従って交換時は、必ず指定の部品を使用してください。

- 外装部品色表示
例：
(SILVER) : セットの色を表す。
(Silver) : 部品の色を表す。

View Position



Link

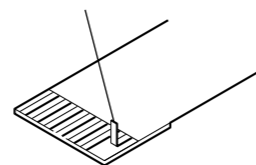
ACCESSORIES

ASSEMBLY

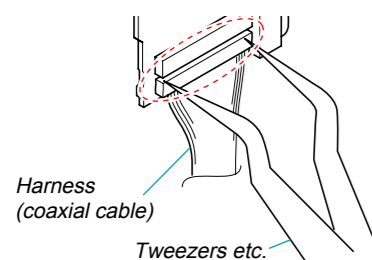
NOTE FOR REPAIR

- Make sure that the flat cable and flexible board are not cracked or bent at the terminal.
Do not insert the cable insufficiently nor crookedly.
- When remove a connector, don't pull at wire of connector. It is possible that a wire is snapped.
- When installing a connector, don't press down at wire of connector. It is possible that a wire is snapped.
- Do not apply excessive load to the gilded flexible board.

Cut and remove the part of gilt which comes off at the point.
(Be careful or some pieces of gilt may be left inside)



NOTE FOR DISCONNECTING THE HARNESS (COAXIAL CABLE)

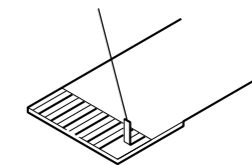


When disconnecting the harness (COAXIAL CABLE), do not pull the harness part but pull off the connector body with tweezers etc.

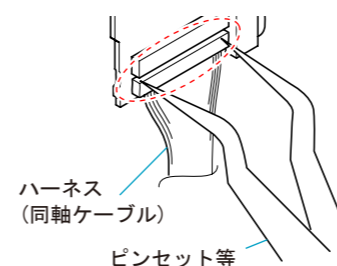
修理時の注意

- フラットケーブルおよびフレキシブル基板の端子面に欠け、折れ等がないことを確認する。
また、コネクタへの接続は、差し込み不足や斜め差しにならないように注意する。
- コネクタを取り外す時に、線材部(極細)を持って引っ張ると断線する恐れがありますので、絶対に線材部(極細)を持って引っ張らないでください。
- 線材部(極細)を押さえながらコネクタを差し込むと、線材部(極細)が断線する恐れがありますので、絶対に線材部(極細)には負担をかけないでください。
- 金メッキされているフレキシブル基板には、強い負担をかけないでください。

先端の剥がれたメッキ部はカットして除去してください。
(メッキ破片がコネクタ内に残っている場合もあるので注意してください)



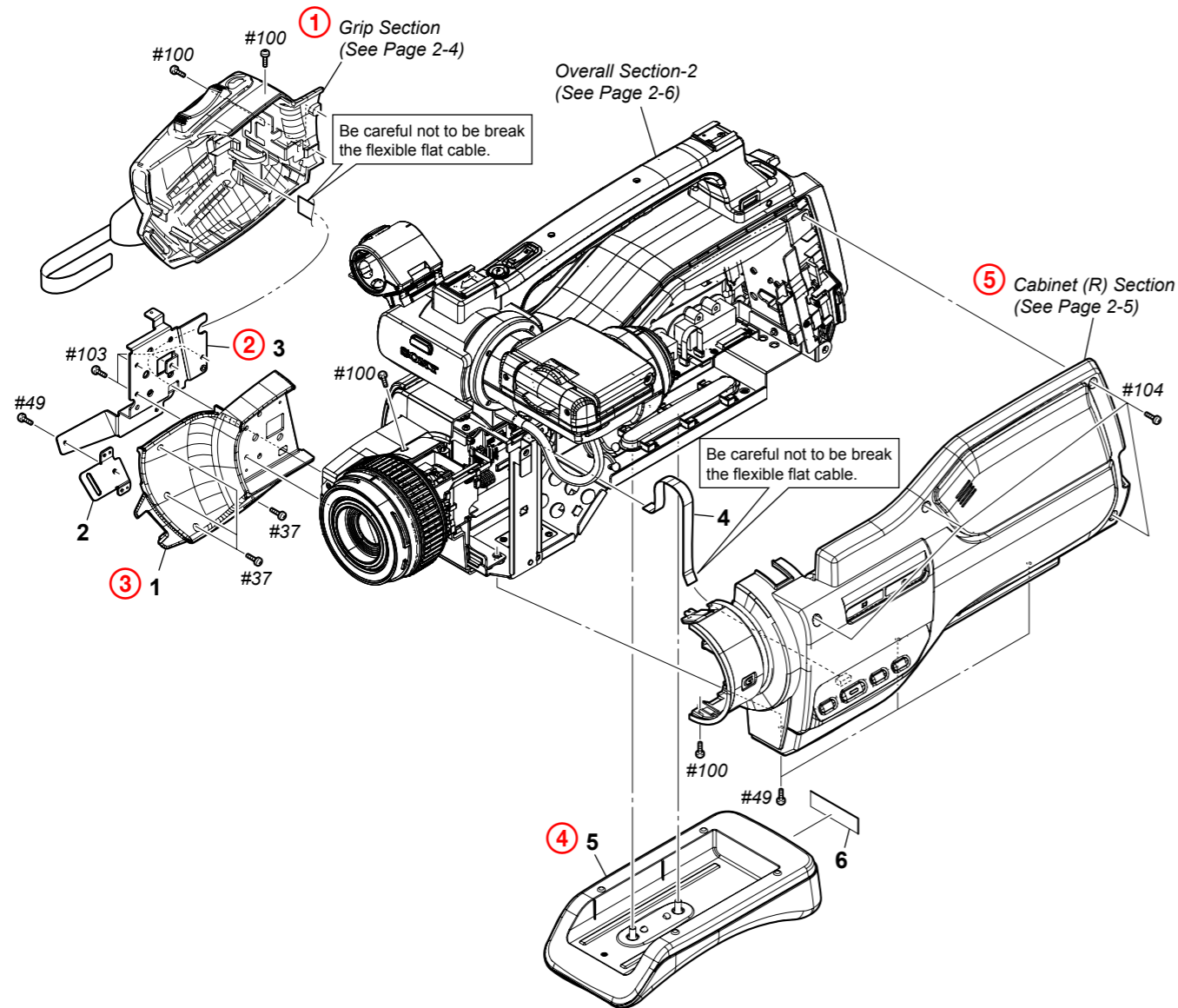
ハーネス(同軸ケーブル)の交換について



ハーネス(同軸ケーブル)を引き抜く際は、ハーネス部を引かず、ピンセット等でコネクタ部を引いてください。

2-1. EXPLODED VIEWS

2-1-1. OVERALL SECTION-1



Ref. No.	Part No.	Description
1	3-284-044-01	BASE, GRIP
* 2	3-284-047-01	BRACKET (F), GRIP BELT
3	3-284-046-01	FRAME, GRIP
4	1-834-808-11	CABLE, FLEXIBLE FLAT (FFC-337)
5	X-2187-984-1	PAD ASSY, SHOULDER

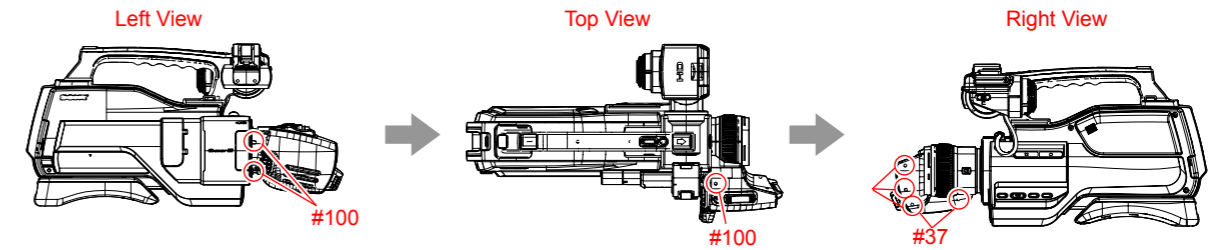
Ref. No.	Part No.	Description
6	4-263-650-11	SHEET (JAPAN) (MC2000E/MC2000J/MC2000N/MC2000U)
6	4-263-650-21	SHEET (JAPAN) (MC1500C/MC1500P)
#37	3-080-206-31	SCREW, TAPPING, P2
#49	2-630-005-31	SCREW (M2), NEW TRUSTER, P2
#100	3-080-203-51	SREW (M2), LOCK ACE, P2
#103	7-685-794-09	SCREW +PTT 2.6X10 (S)
#104	7-682-548-09	SCREW +B 3X8

HXR-MC1500C/MC1500P/MC2000E/MC2000J/MC2000N/MC2000U

DISASSEMBLY

1. Remove to numerical order (① to ⑤) in the left figure.

① #100 X 3 → #37 X 4

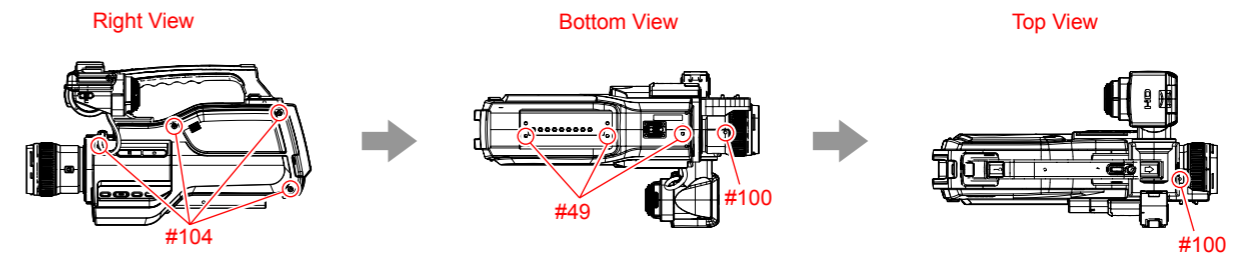


② #103 X 4



④ Two Screws (including Shoulder Pad Assy)

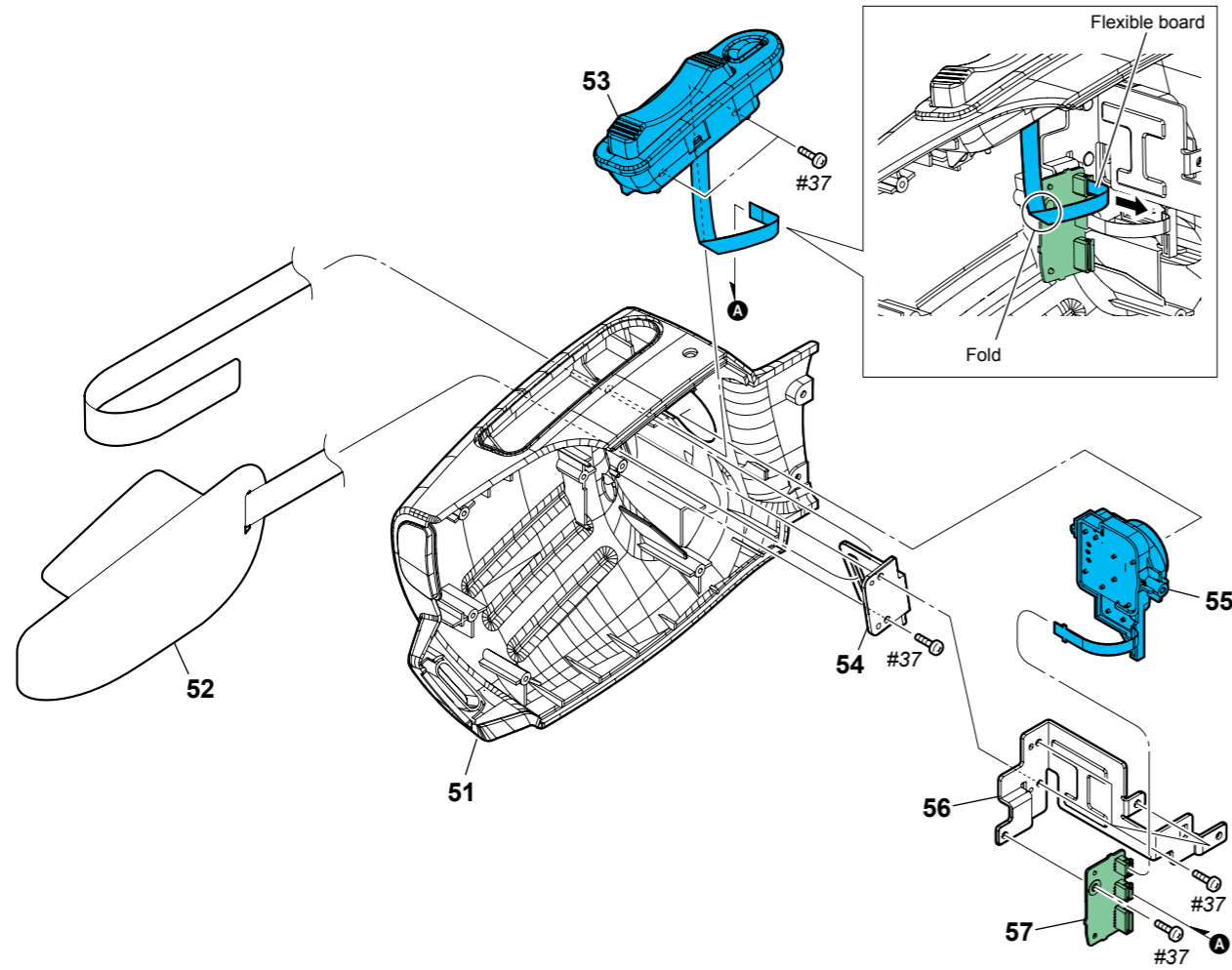
⑤ #104 X 4 → #49 X 3 → #100 X 2



Screw

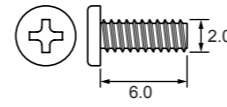
#37: M2.0 X 6.0 (Tapping) (Black) 3-080-206-31 	#49: M2.0 X 4.0 (Black) 2-630-005-31 	#100: M2.0 X 6.0 (Black) 3-080-203-51 	#103: M2.6 X 10.0 (Silver) 7-685-794-09 	#104: M3.0 X 8.0 (Black) 7-682-548-09
--	--	---	---	---

2-1-2. GRIP SECTION



Screw

#37: M2.0 X 6.0 (Tapping)
(Black)
3-080-206-31

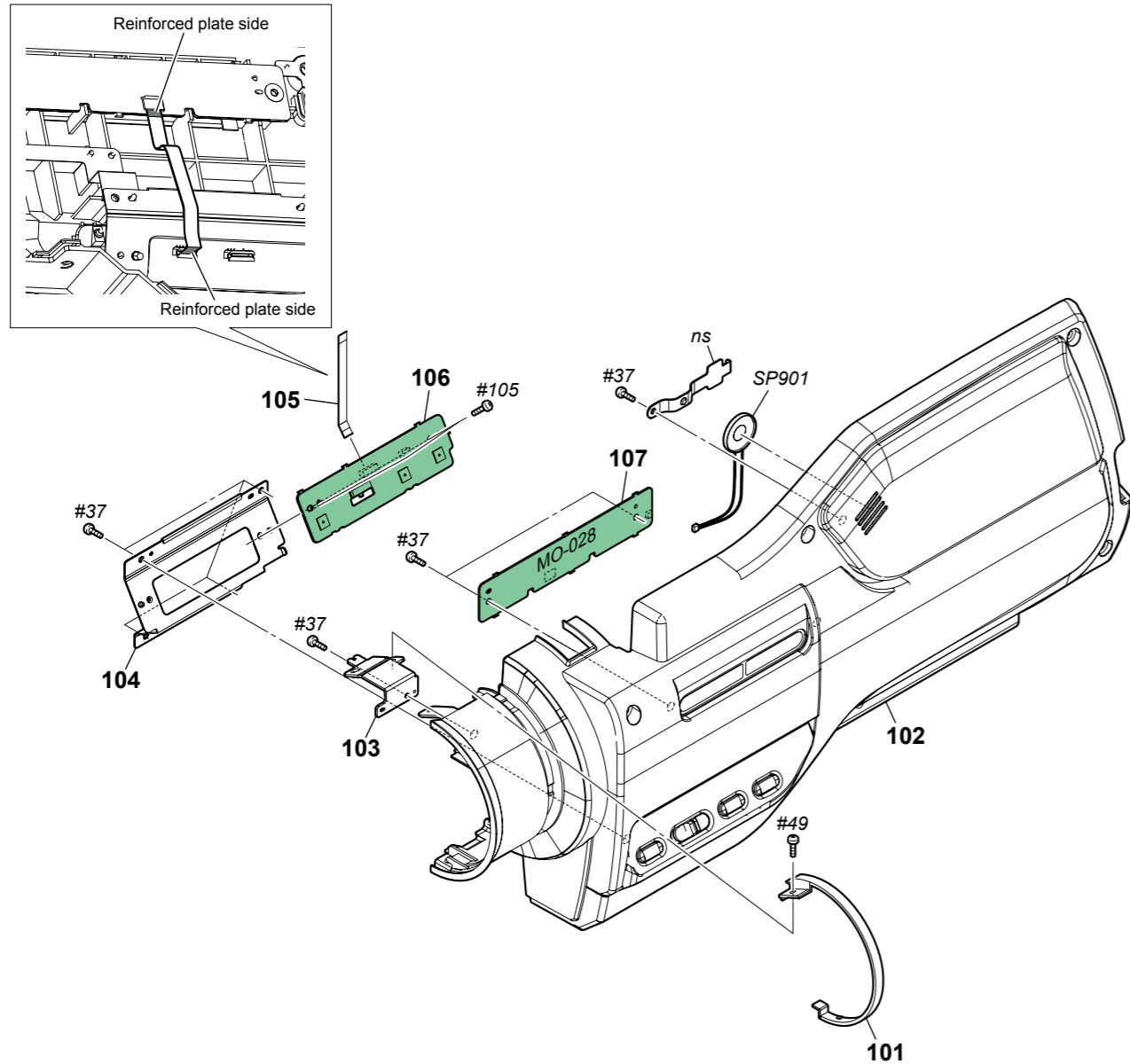


Ref. No.	Part No.	Description
51	4-263-758-01	CABINET, GRIP
52	3-289-560-01	BELT, GRIP
53	1-480-479-11	SWITCH BLOCK, CONTROL (ZM90500)
* 54	4-263-759-01	BRACKET (B), GRIP BELT
55	1-487-447-11	SWITCH BLOCK, CONTROL (PS94000)

Ref. No.	Part No.	Description
* 56	4-263-760-01	PLATE, SS RETAINER
57	A-1799-382-A	NS-023 BOARD, COMPLETE
#37	3-080-206-31	SCREW, TAPPING, P2

2-1-3. CABINET (R) SECTION

ns : not supplied

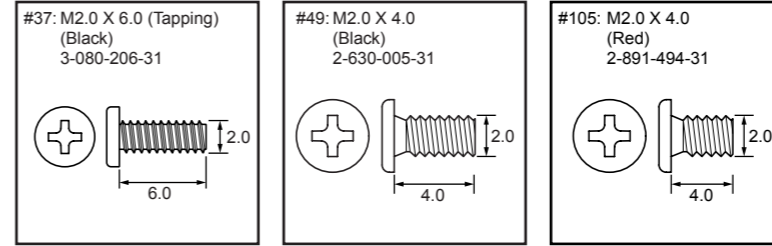


Ref. No.	Part No.	Description
101	3-283-972-01	RING, ORNAMENTAL
102	X-2560-614-1	CABINET (R) ASSY (925)
* 103	3-283-971-01	BRACKET (UPPER), LR
* 104	3-283-969-01	BRACKET, CHASSIS
105	1-834-807-11	CABLE, FLEXIBLE FLAT (FFC-336)

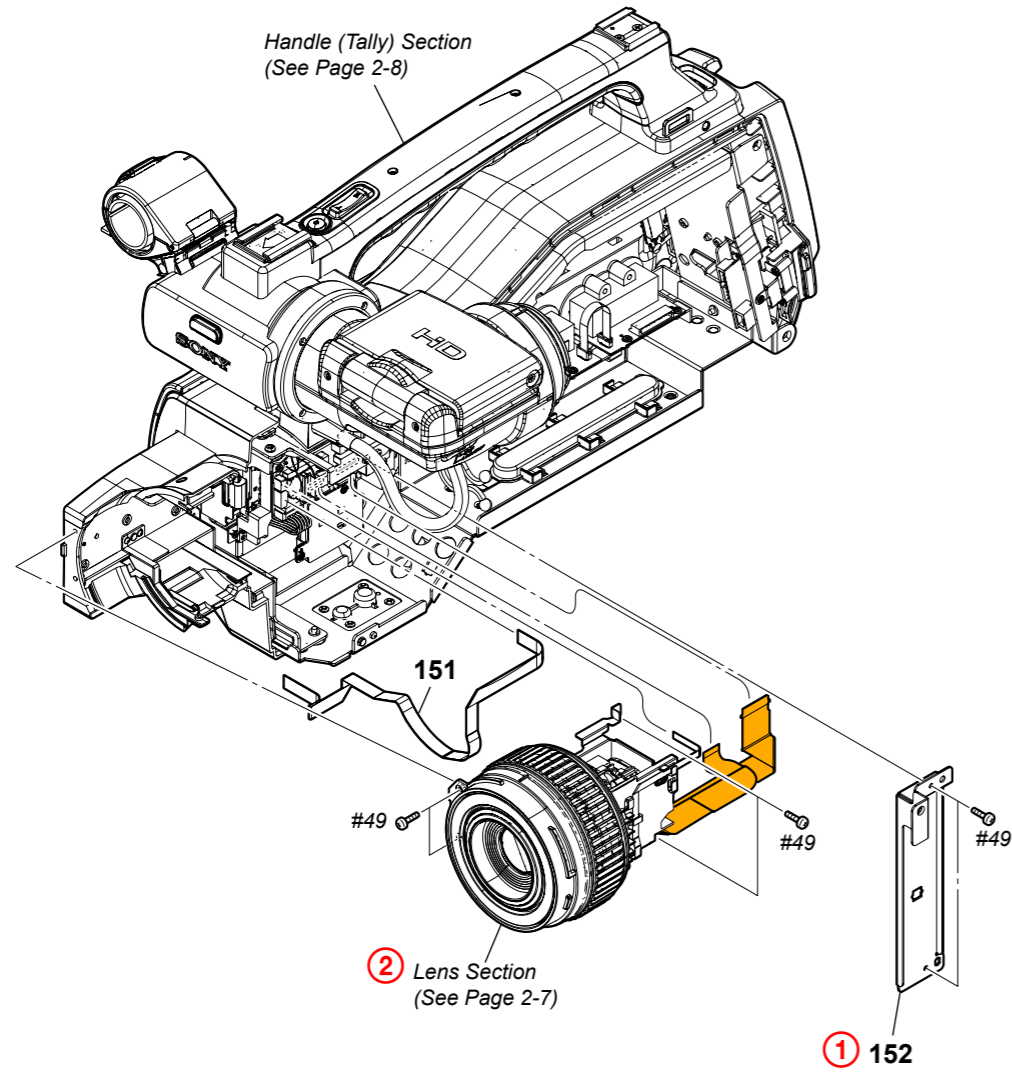
Ref. No.	Part No.	Description
106	A-1799-370-A	SP-053 BOARD, COMPLETE
107	A-1799-371-A	MO-028 BOARD, COMPLETE
SP901	1-858-324-41	SPEAKER (1.6CM)
#37	3-080-206-31	SCREW, TAPPING, P2
#49	2-630-005-31	SCREW (M2), NEW TRUSTER, P2
#105	2-891-494-31	SCREW (M2), NEW TRUSTER, P2

HXR-MC1500C/MC1500P/MC2000E/MC2000J/MC2000N/MC2000U

Screw



2-1-4. OVERALL SECTION-2



Ref. No.	Part No.	Description
151	1-883-562-11	CABLE, FLEXIBLE FLAT (FFC-240)
* 152	3-284-037-01	FRAME (R)
#49	2-630-005-31	SCREW (M2), NEW TRUSTER, P2

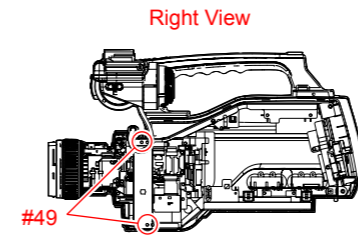
Ref. No. Part No. Description

HXR-MC1500C/MC1500P/MC2000E/MC2000J/MC2000N/MC2000U

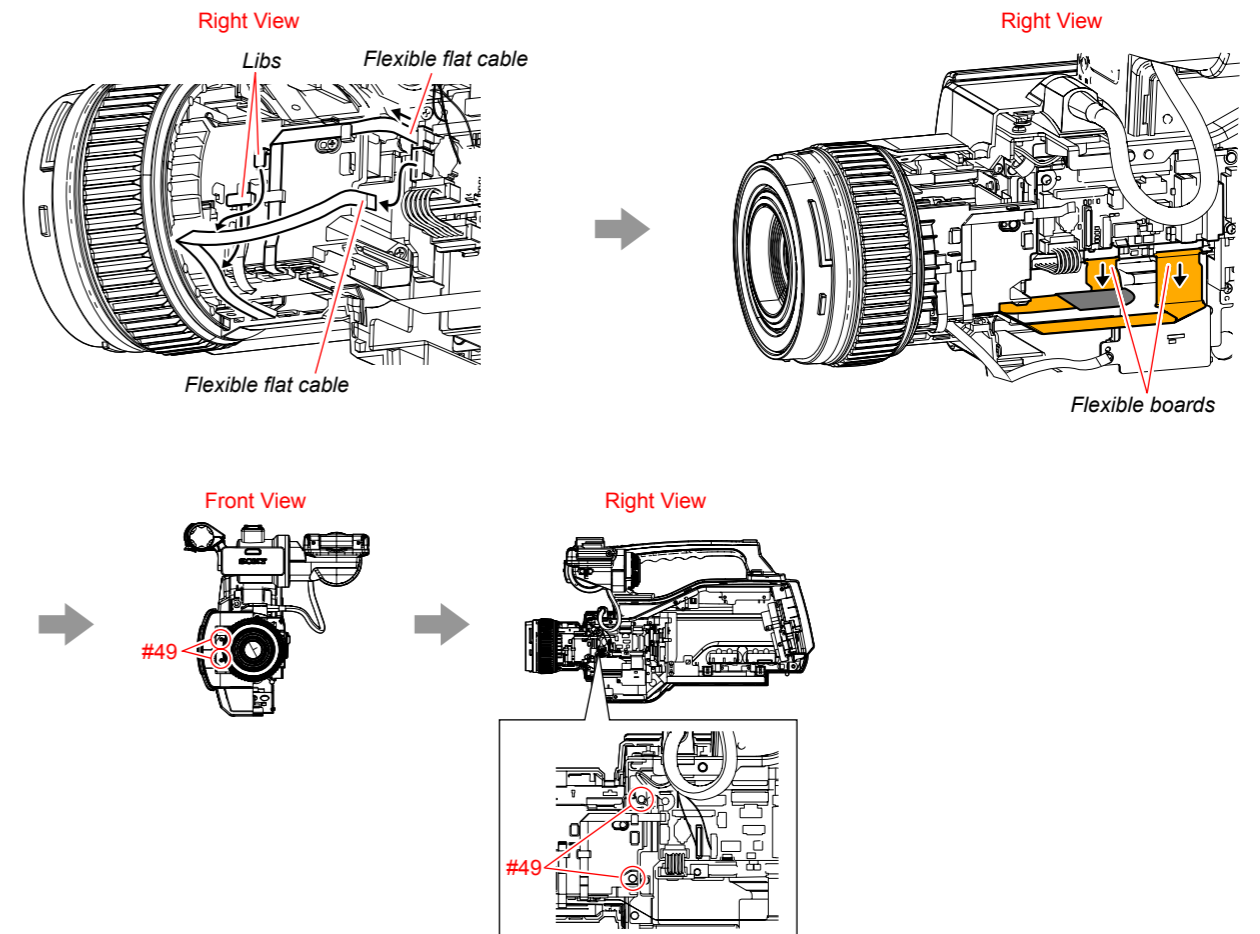
DISASSEMBLY

1. Remove to numerical order (1) to (2) in the left figure.

① #49 X 2

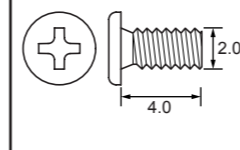


② Flexible flat cables → Flexible boards → #49 X 4

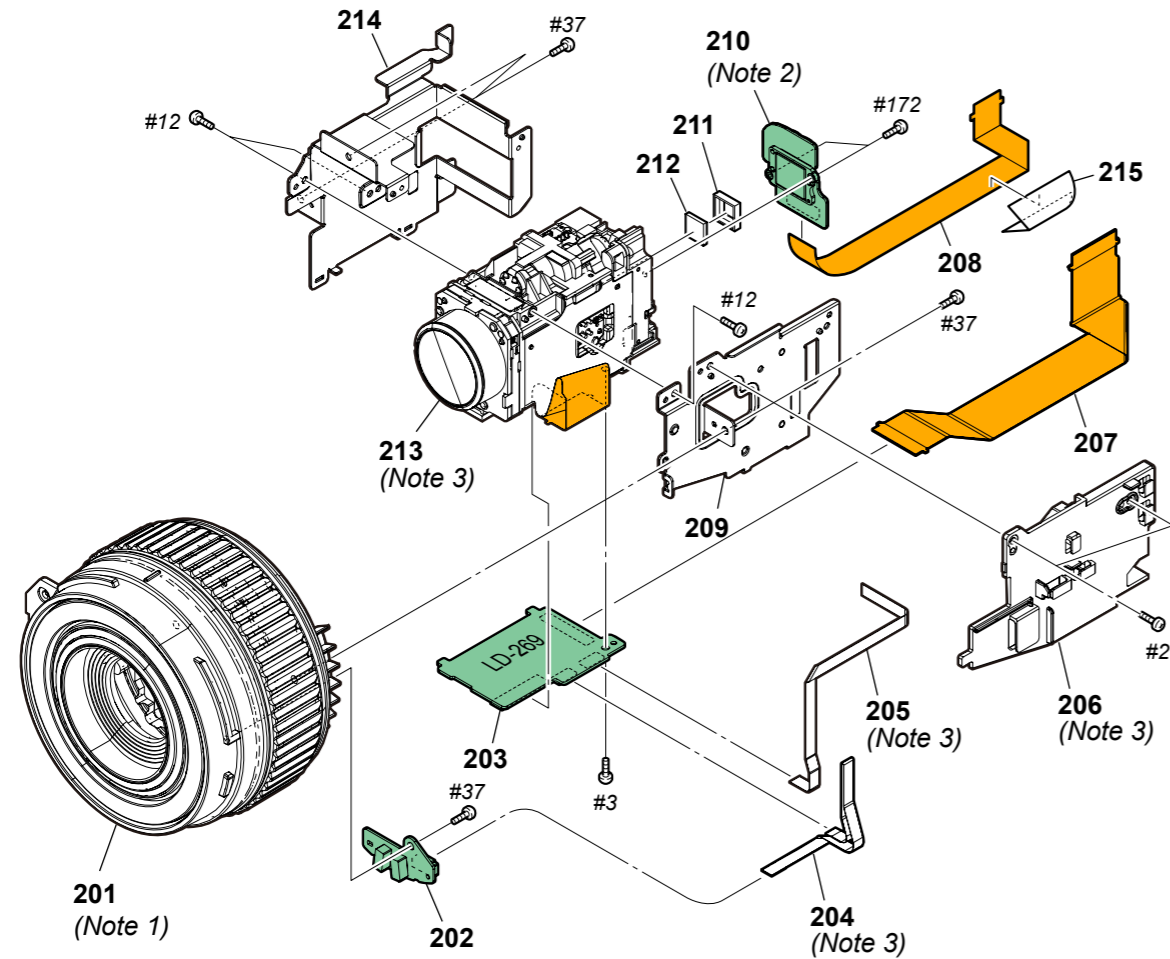


Screw

#49: M2.0 X 4.0
(Black)
2-630-005-31



2-1-5. LENS SECTION

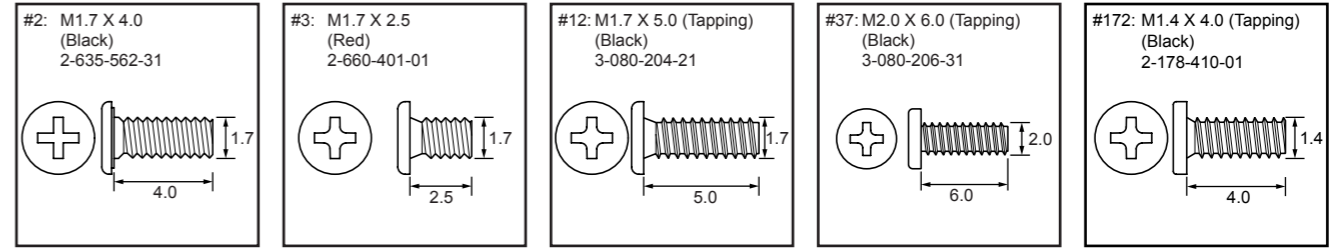


Ref. No.	Part No.	Description
201	X-2560-631-1	PANEL ASSY, F (Note 1)
202	A-1799-373-A	EC-004 BOARD, COMPLETE
203	A-1799-372-A	LD-269 BOARD, COMPLETE
204	1-834-810-11	CABLE, FLEXIBLE FLAT (FFC-339) (Note 3)
205	1-883-563-11	CABLE, FLEXIBLE FLAT (FFC-241) (Note 3)
206	4-263-977-01	CLAMP, FLEXIBLE (Note 3)
207	1-883-559-11	FP-1294 FLEXIBLE BOARD
208	1-883-560-11	FP-1295 FLEXIBLE BOARD
209	4-263-976-01	FRAME (R (230)), LENS
210	A-1767-897-A	CM-114 BOARD, COMPLETE (Note 2)

Ref. No.	Part No.	Description
211	3-216-044-01	RUBBER (1270), SEAL
212	1-856-066-11	OPTICAL FILTERBLOCK (OFB-03-51)
213	A-1733-588-A	LSV-1400A (SERVICE) (Note 3)
214	4-263-975-01	FRAME (L (230)), LENS
215	4-263-664-01	SHEET (CM), SHIELD
#2	2-635-562-31	SCREW (M1.7)
#3	2-660-401-01	SCREW (M1.7), NEW TRU-STAR, P2
#12	3-080-204-21	SCREW, TAPPING, P2
#37	3-080-206-31	SCREW, TAPPING, P2
#172	2-178-410-01	TITE (UB TITE) 1.4

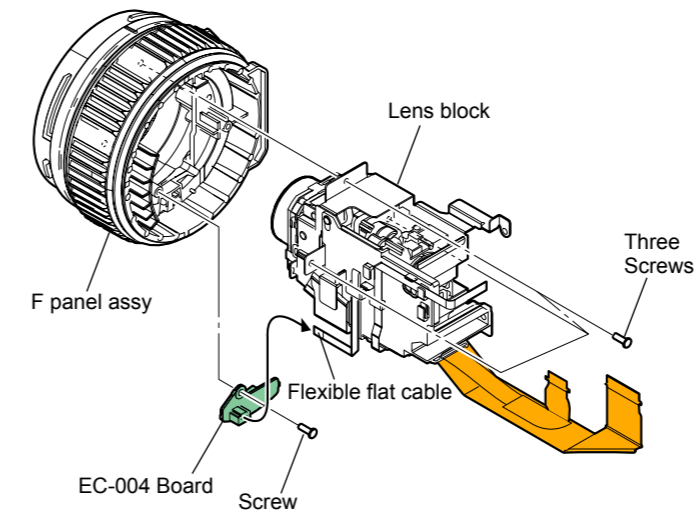
HXR-MC1500C/MC1500P/MC2000E/MC2000J/MC2000N/MC2000U

Screw



Note

Note 1: REMOVING METHODE OF F PANEL ASSY



Note 2: Be sure to read "Precautions for Replacement of Imager" on page 6-1 of LEVEL 3 when changing the imager.

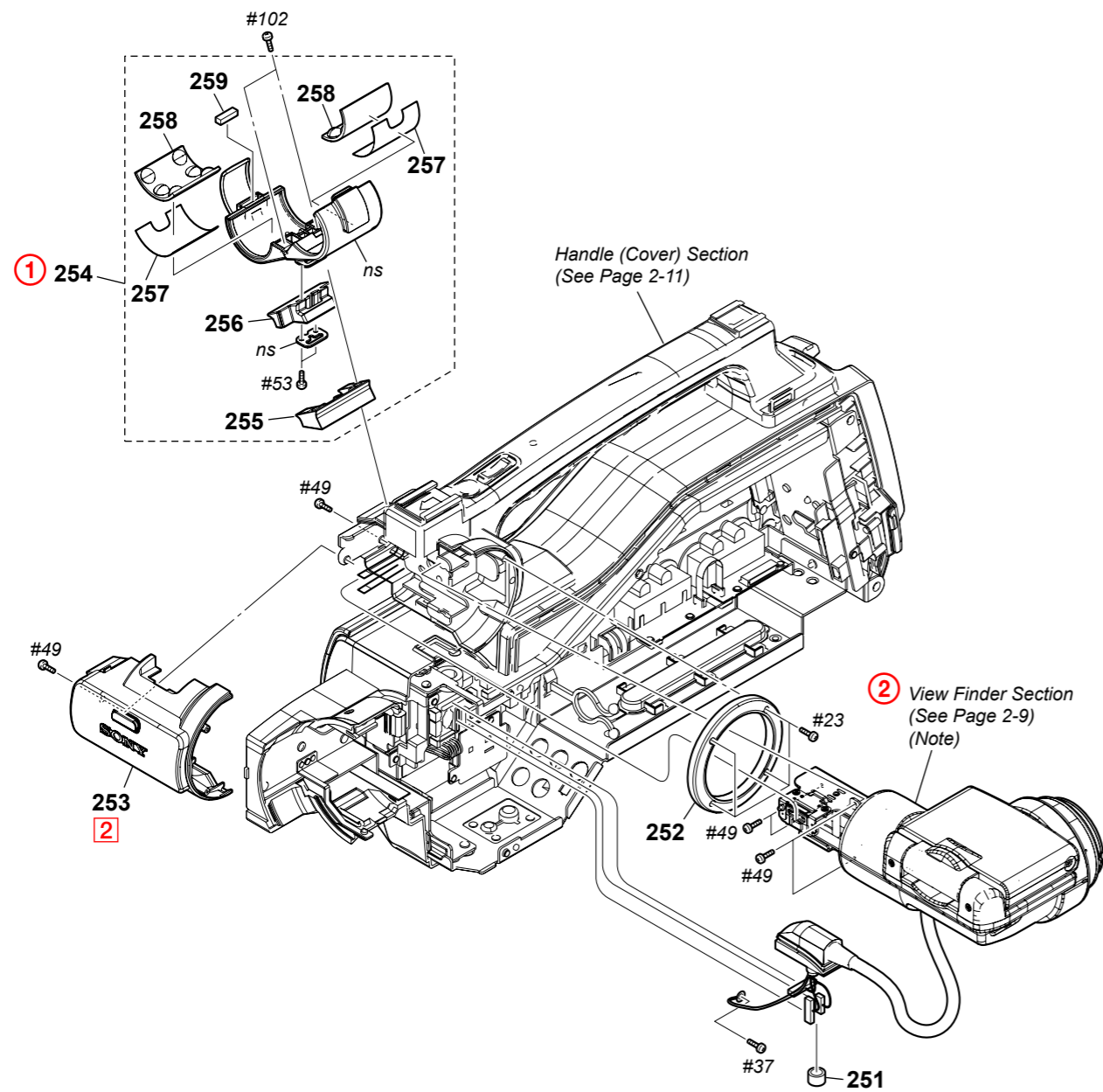
Note 2: イメージャの交換時は6-1ページの「イメージャ交換時の注意」を必ずお読みください。

Note 3: Refer to "Assembly-2: Installation Cautions of Flexible board and Flexible flat cables of the Lens block".

Note 3: "Assembly-2: Installation Cautions of Flexible board and Flexible flat cables of the Lens block"を参照してください。

2-1-6. HANDLE (TALLY) SECTION

ns : not supplied



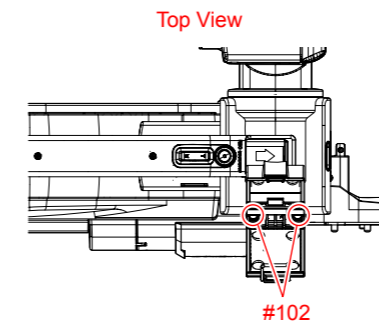
Ref. No.	Part No.	Description
251	1-481-788-11	CORE, FERRITE
252	3-283-989-01	BASE, RING
253	X-2187-977-1	CABINET ASSY, TALLY (FRONT)
254	X-2342-570-1	HOLDER (93000) ASSY, MICROPHONE
255	3-284-075-02	COVER, MICROPHONE HOLDER RUBBER

Ref. No.	Part No.	Description
256	4-119-861-01	RUBBER (93000), HOLDER
257	3-284-081-11	SHEET, RUBBER ADHESIVE
258	3-284-080-01	RUBBER, MICROPHONE
259	3-284-621-11	CUSHION, MICROPHONE HOLDER
#23	3-080-204-11	SCREW, TAPPING, P2
#37	3-080-206-31	SCREW, TAPPING, P2
#49	2-630-005-31	SCREW (M2), NEW TRUSTER, P2
#53	3-080-206-21	SCREW, TAPPING, P2
#102	7-621-284-30	SCREW +P 2.6X8

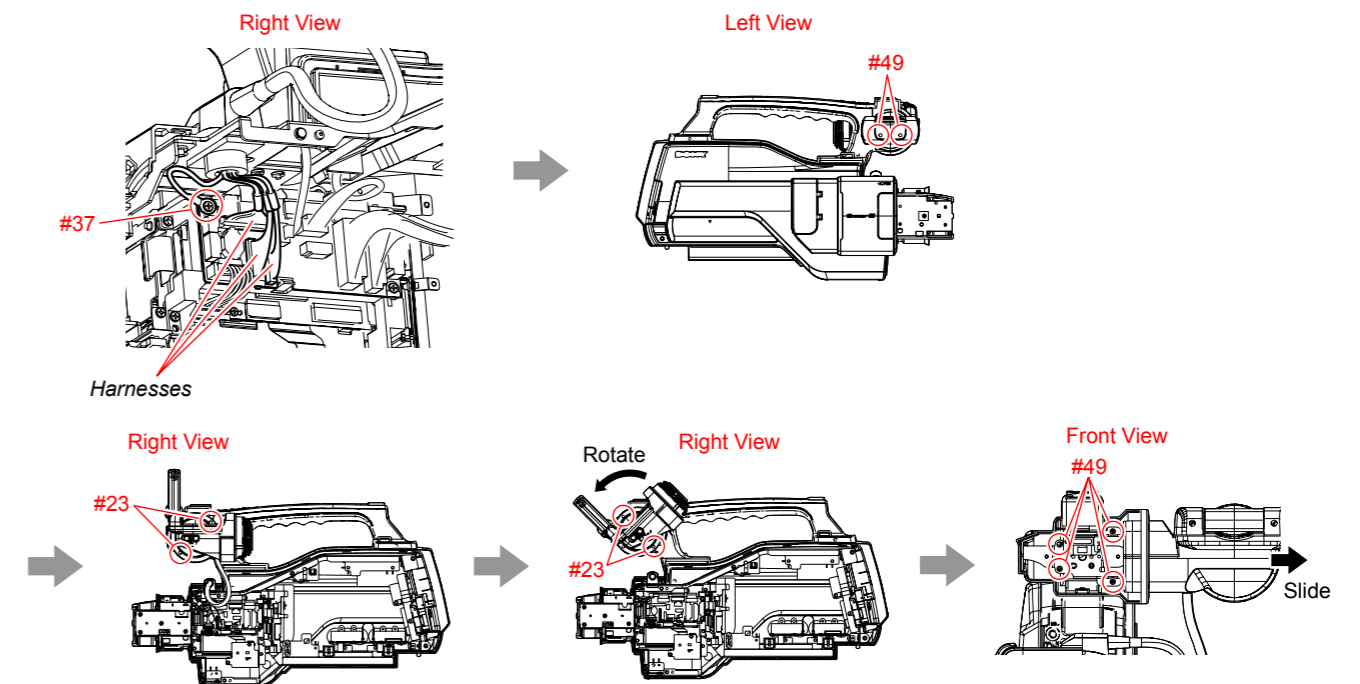
DISASSEMBLY

1. Remove to numerical order (① to ②) in the left figure.

① #102 X 2



⑤ Harnesses → #37 X 1 → #49 X 2 → #23 X 4 → Tally (Front) Cabinet Assy (②) → #49 X 4



Screw

#23: M1.7 X 4.0 (Tapping) (Black) 3-080-204-11 	#37: M2.0 X 6.0 (Tapping) (Black) 3-080-206-31 	#49: M2.0 X 4.0 (Black) 2-630-005-31 	#53: M2.0 X 5.0 (Tapping) (Black) 3-080-206-21 	#102: M2.6 X 8.0 (Black) 7-621-284-30
---	---	---	---	--

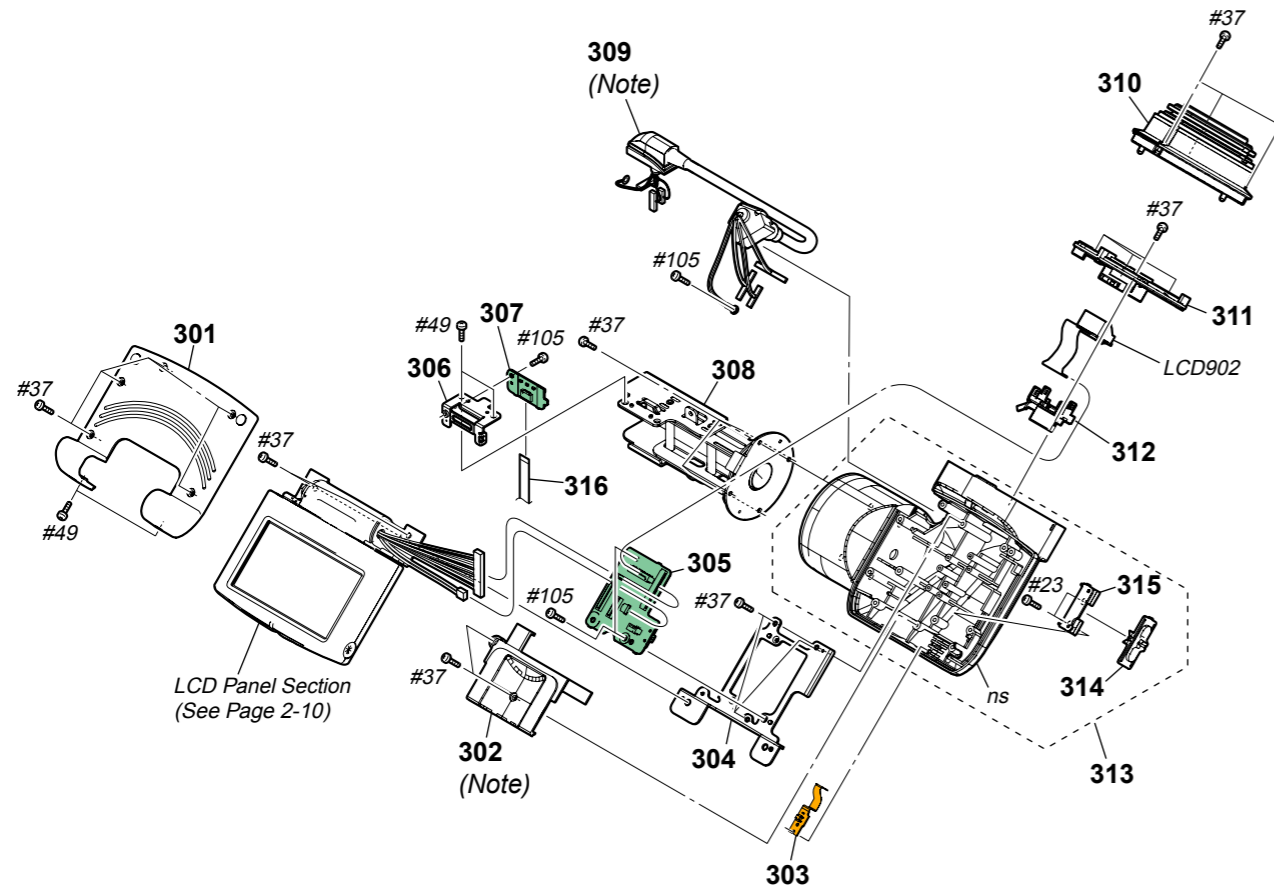
Note

Note: Refer to "Assembly-1: Installation Cautions of the View finder section".

Note: "Assembly-1: Installation Cautions of the View finder section"を参照してください。

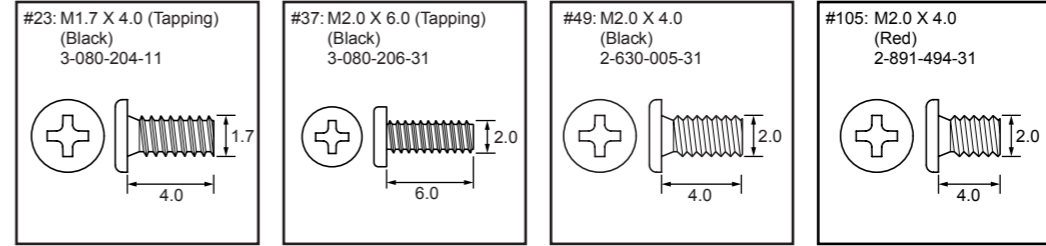
2-1-7. VIEW FINDER SECTION

ns : not supplied



Ref. No.	Part No.	Description	Ref. No.	Part No.	Description
301	X-2187-981-1	CABINET (UPPER) ASSY, VF	311	4-263-788-01	CABINET, INNER
302	3-284-016-01	COVER, HINGE (LOWER) (Note)	* 312	4-178-033-01	VF RETAINER
303	A-1799-374-A	FP-1293 BOARD, COMPLETE	313	X-2560-616-1	LOWER ASSY, VF CABINET
* 304	3-284-017-01	FRAME, VF	* 314	3-283-991-01	KNOB, ON/OFF
305	A-1799-376-A	BH-002 BOARD, COMPLETE	* 315	3-283-992-01	RETAINER, ON/OFF KNOB
* 306	3-284-015-01	FRAME, HI	316	1-834-802-11	CABLE, FLEXIBLE FLAT (FFC-329)
307	A-1799-375-A	HI-079 BOARD, COMPLETE	LCD902	1-811-013-11	LCD MODULE (FL0906)
308	X-2187-979-1	HINGE ASSY, VF	#23	3-080-204-11	SCREW, TAPPING, P2
309	1-965-791-11	HARNESS (BI-001) (Note)	#37	3-080-206-31	SCREW, TAPPING, P2
310	X-2560-630-1	ADJUSTMENT ASSY, VISIBILITY	#49	2-630-005-31	SCREW (M2), NEW TRUSTER, P2
			#105	2-891-494-31	SCREW (M2), NEW TRUSTER, P2

Screw

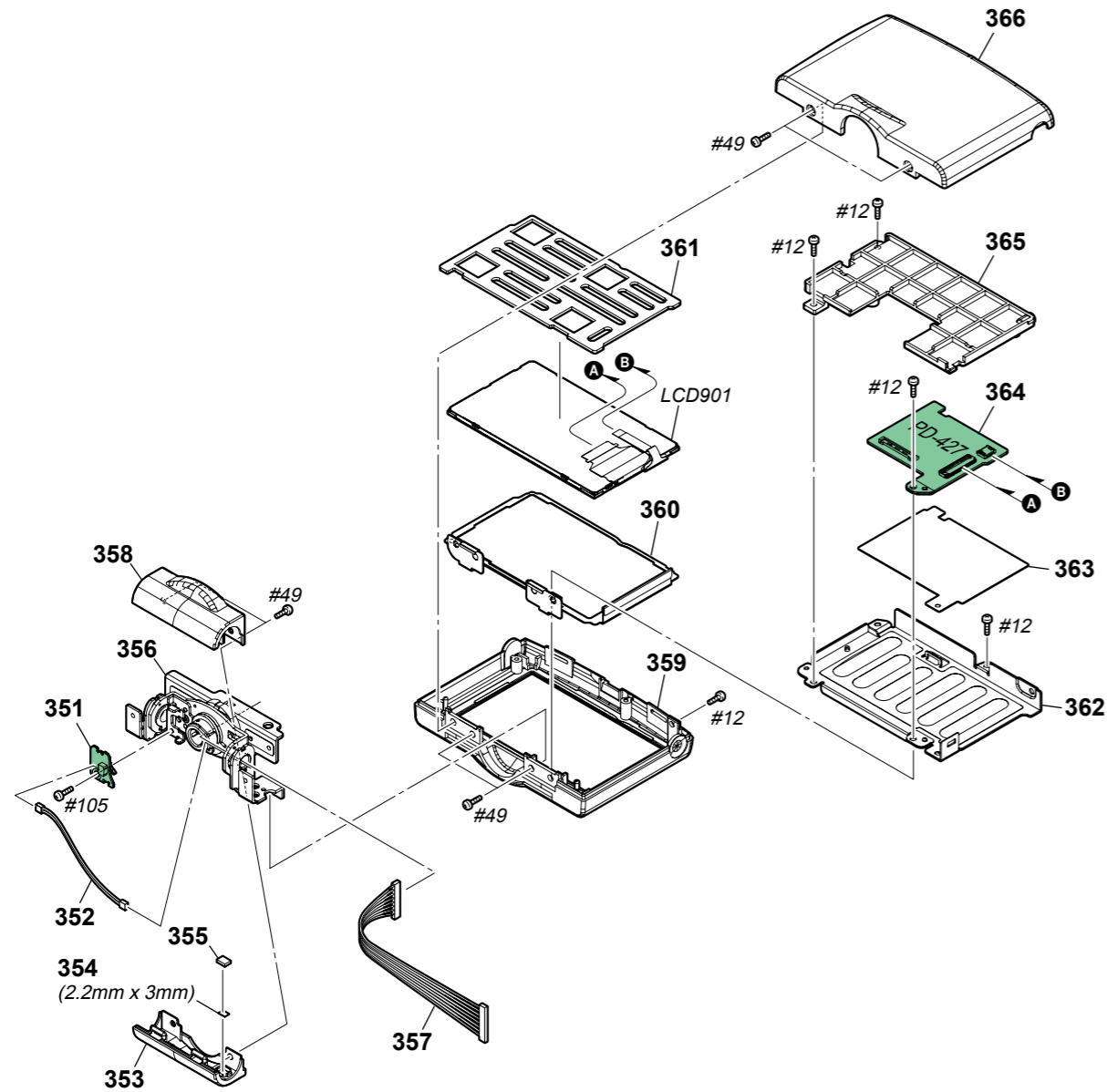


Note

Note: Refer to "Assembly-3: Installation Cautions of Harnesses (coaxial cable/BI-001/RS-112)".

Note: "Assembly-3: Installation Cautions of Harnesses (coaxial cable/BI-001/RS-112)"を参照してください。

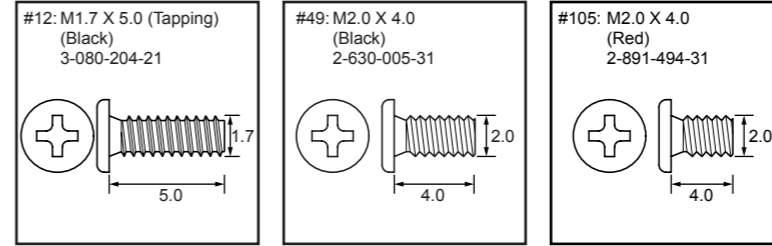
2-1-8. LCD PANEL SECTION



Ref. No.	Part No.	Description
351	A-1799-377-A	RE-042 BOARD, COMPLETE
352	1-965-560-11	HARNESS (RS-112)
353	3-284-024-01	COVER (REAR), HINGE
354	2-649-300-01	SHEET, ADHESIVE
355	1-452-929-12	MAGNET (011)
356	X-2187-982-1	HINGE ASSY
357	1-965-937-31	HARNESS (COAXIAL CABLE)
358	3-284-023-01	COVER (FRONT), HINGE
359	4-263-970-01	CABINET (M), P
360	4-263-968-01	PLATE (P), GROUND

Ref. No.	Part No.	Description
361	4-263-969-01	CUSHION, LCD
362	4-263-972-01	RETAINER, LCD
363	4-263-973-01	INSULATING SHEET (PD)
364	A-1799-378-A	PD-427 BOARD, COMPLETE
365	4-263-971-01	GUARD, FLEXIBLE
366	3-284-025-21	CABINET (C), P
LCD901	1-811-015-11	LCD MODULE WITH TOUCH PANEL
#12	3-080-204-21	SCREW, TAPPING, P2
#49	2-630-005-31	SCREW (M2), NEW TRUSTER, P2
#105	2-891-494-31	SCREW (M2), NEW TRUSTER, P2

Screw



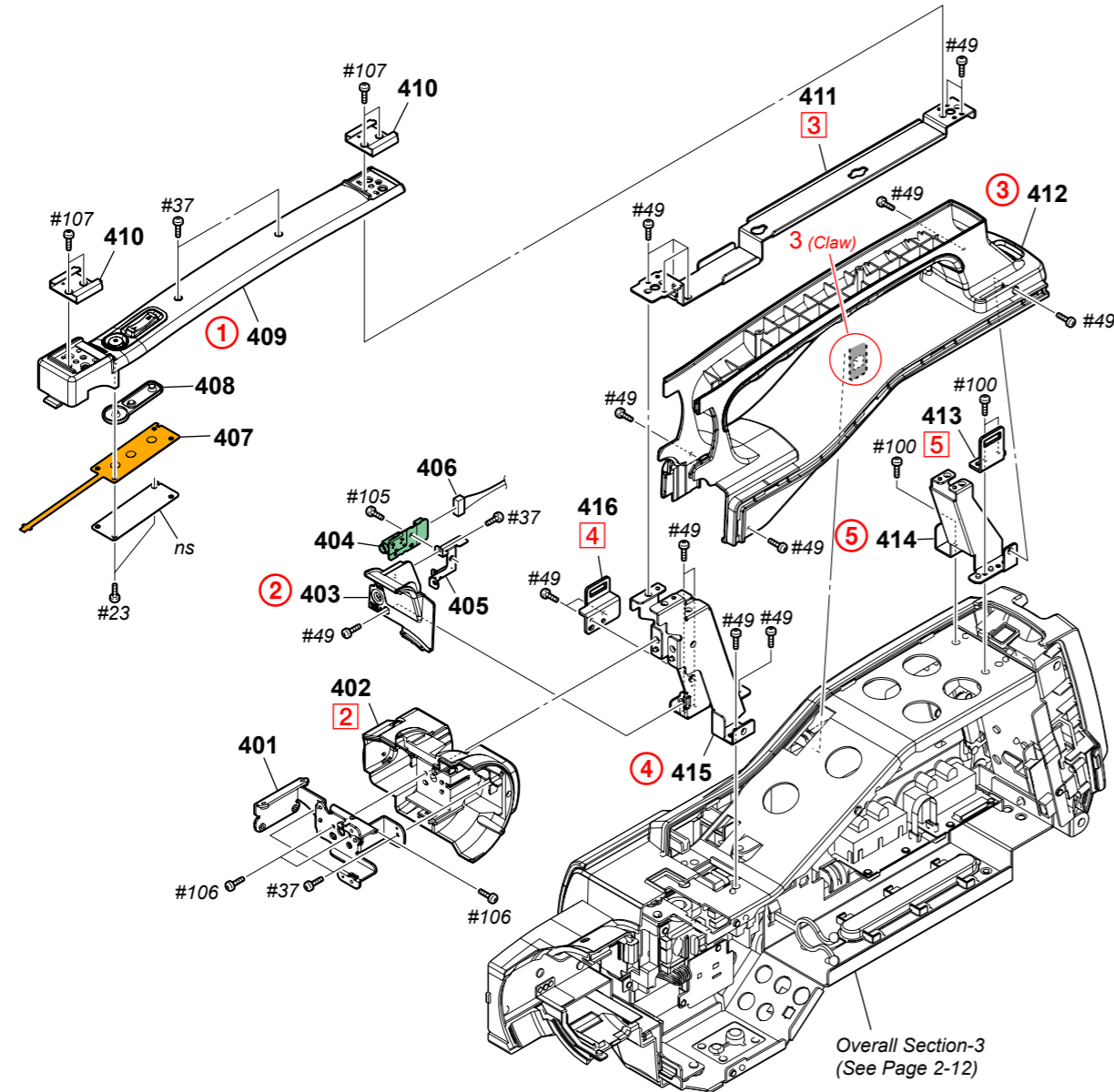
Note

CAUTION:
For the part of 354, cut ADHESIVE SHEET (2-649-300-01) into the desired length and use it.

注意:
354 : SHEET,ADHESIVE (2-649-300-01)を切って使用すること。

2-1-9. HANDLE (COVER) SECTION

ns : not supplied



Ref. No.	Part No.	Description
* 401	3-283-987-01	BRACKET, TALLY
402	3-283-986-01	CABINET, TALLY (LR)
403	3-283-984-01	COVER, HANDLE LOWER
404	A-1799-383-A	MC-201 BOARD, COMPLETE
* 405	3-283-985-01	BRACKET, MICROPHONE JACK
406	1-965-549-11	HARNESS (MI-075)
407	1-874-532-11	FP-793 FLEXIBLE BOARD
* 408	2-892-090-01	KEY, RUBBER TACT
409	X-2187-976-1	COVER ASSY, HANDLE
410	3-067-469-11	SHOE, ACCESSORY

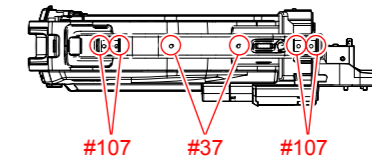
Ref. No.	Part No.	Description
* 411	3-283-980-01	PLATE (B), HANDLE
412	X-2187-975-1	HANDLE ASSY
413	3-283-983-01	BRACKET (R), STRAP
* 414	3-283-979-01	PLATE (A), HANDLE
* 415	3-283-981-01	PLATE (C), HANDLE
416	3-283-982-01	BRACKET (F), STRAP
#23	3-080-204-11	SCREW, TAPPING, P2
#37	3-080-206-31	SCREW, TAPPING, P2
#49	2-630-005-31	SCREW (M2), NEW TRUSTER, P2
#100	3-080-203-51	SREW (M2), LOCK ACE, P2
#105	2-891-494-31	SCREW (M2), NEW TRUSTER, P2
#106	3-713-786-11	SCREW (M2X6)
#107	3-032-750-01	(+) K SCREW M2

HXR-MC1500C/MC1500P/MC2000E/MC2000J/MC2000N/MC2000U

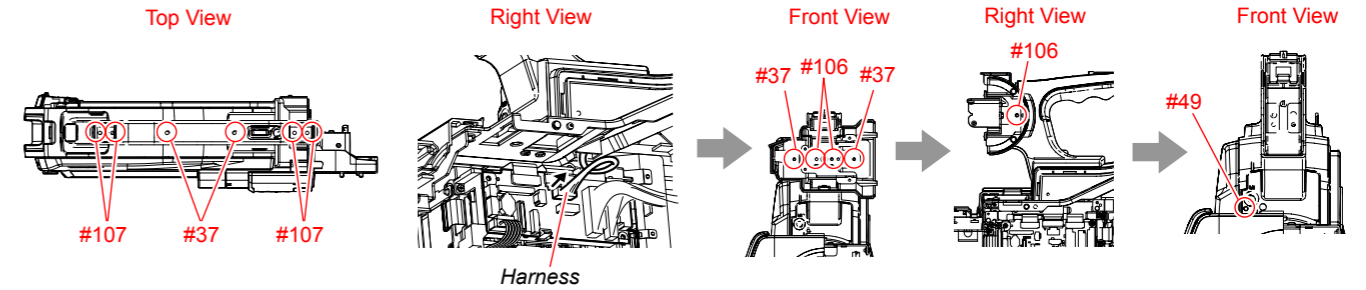
DISASSEMBLY

1. Remove to numerical order (① to ⑤) in the left figure.

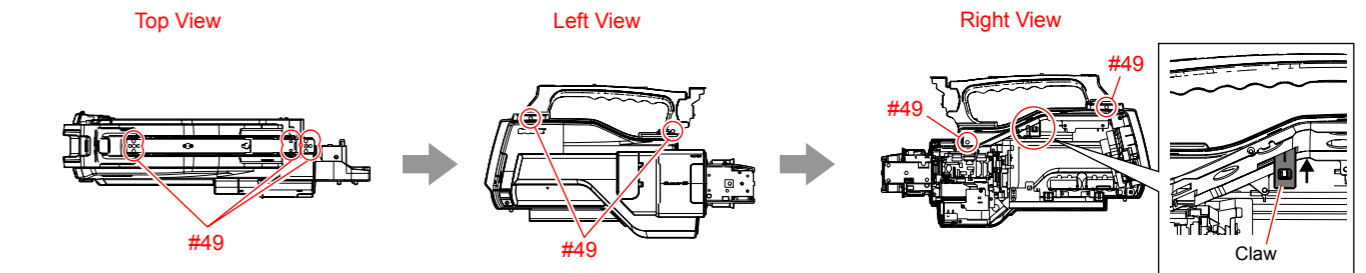
① #107 X 4 → #37 X 2



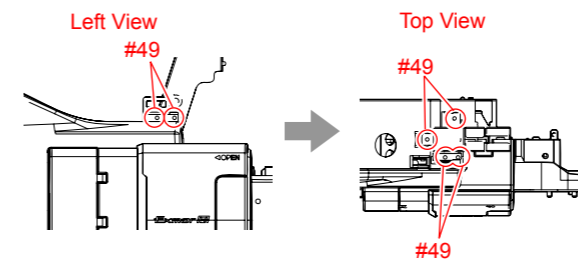
② Harness → #37 X 2 → #106 X 3 → Tally (LR) Cabinet (②) → #49 X 1



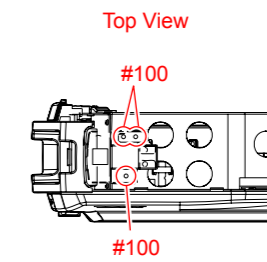
③ #49 X 6 → Handle Plate (B) (③) → #49 X 4



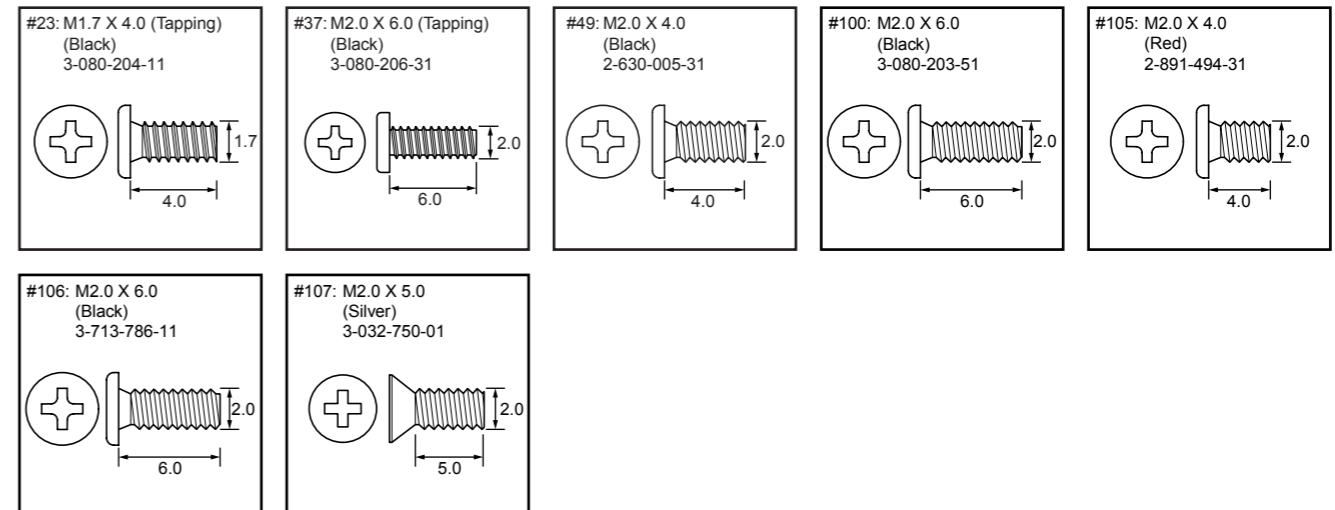
④ #49 X 2 → Strap Bracket (F) (④) → #49 X 4



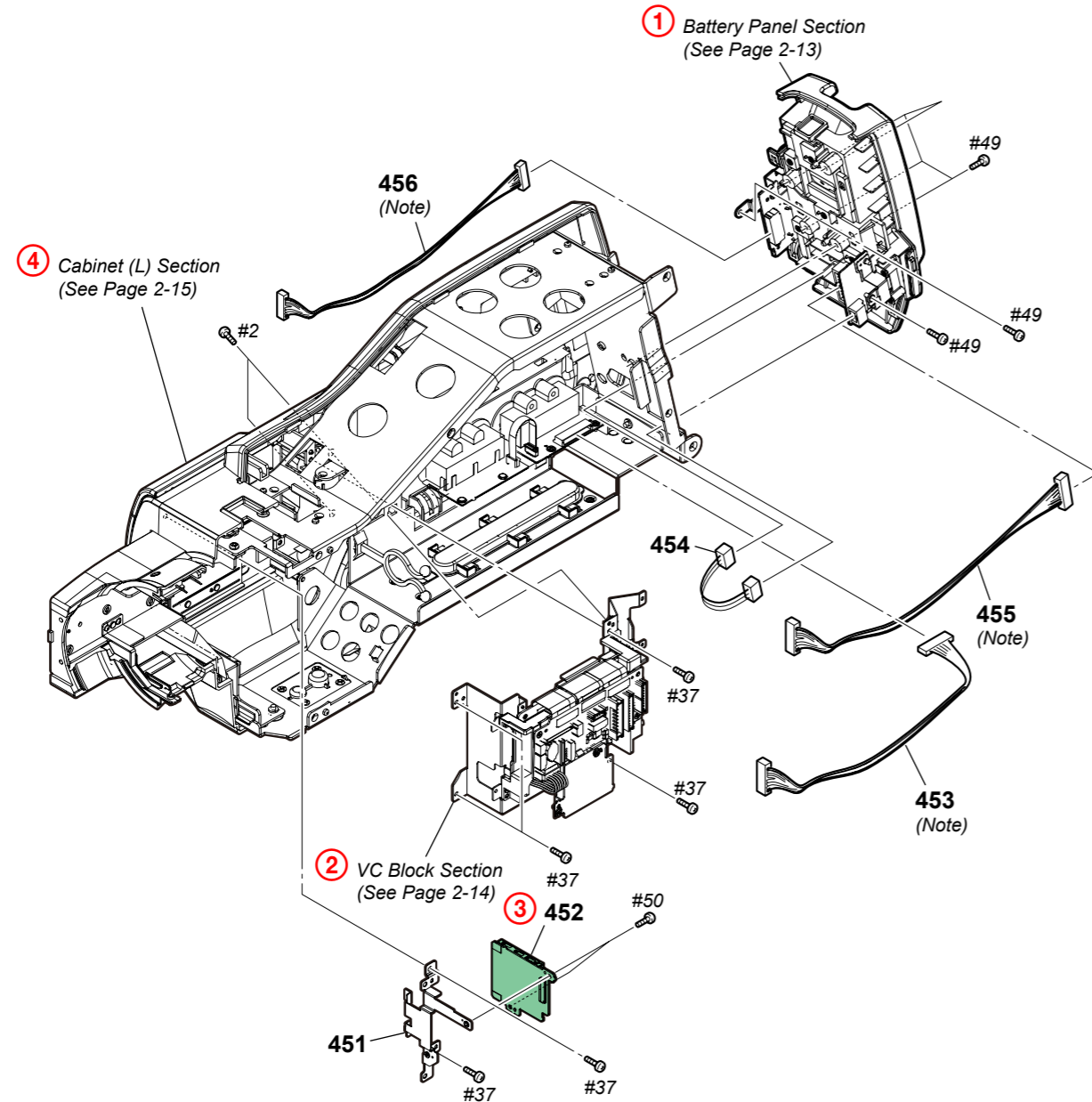
⑤ #100 X 2 → Strap Bracket (R) (⑤) → #100 X 1



Screw



2-1-10. OVERALL SECTION-3



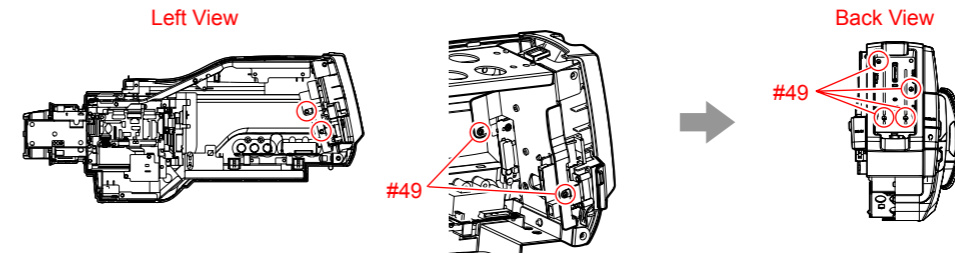
Ref. No.	Part No.	Description	Ref. No.	Part No.	Description
* 451	4-263-677-01	BRACKET, MS	456	1-965-554-11	HARNESS (DI-003) (Note)
452	A-1805-908-A	MS-452 BOARD, COMPLETE	#2	2-635-562-31	SCREW (M1.7)
453	1-965-556-11	HARNESS (IJ-001) (Note)	#37	3-080-206-31	SCREW, TAPPING, P2
454	1-965-745-11	HARNESS (BD-058)	#49	2-630-005-31	SCREW (M2), NEW TRUSTER, P2
455	1-965-555-11	HARNESS (DI-004) (Note)	#50	2-891-494-11	SCREW (M2), NEW TRUSTER, P2

HXR-MC1500C/MC1500P/MC2000E/MC2000J/MC2000N/MC2000U

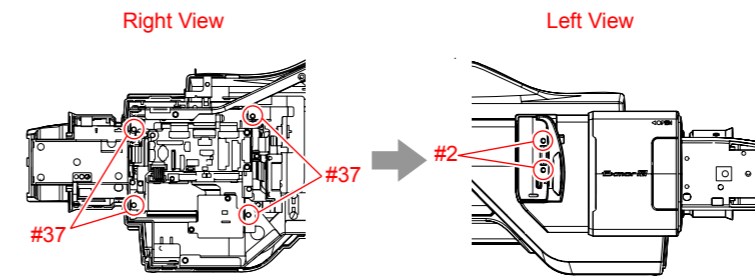
DISASSEMBLY

1. Remove to numerical order (1) to (4) in the left figure.

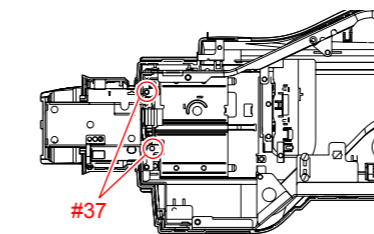
① #49 X 6



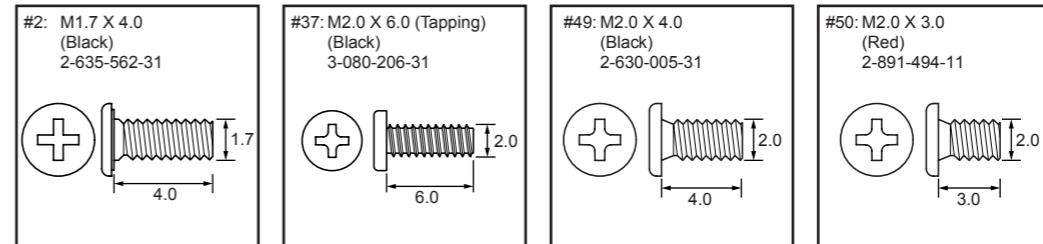
② #37 X 4 → #2 X 2



③ #37 X 2



Screw



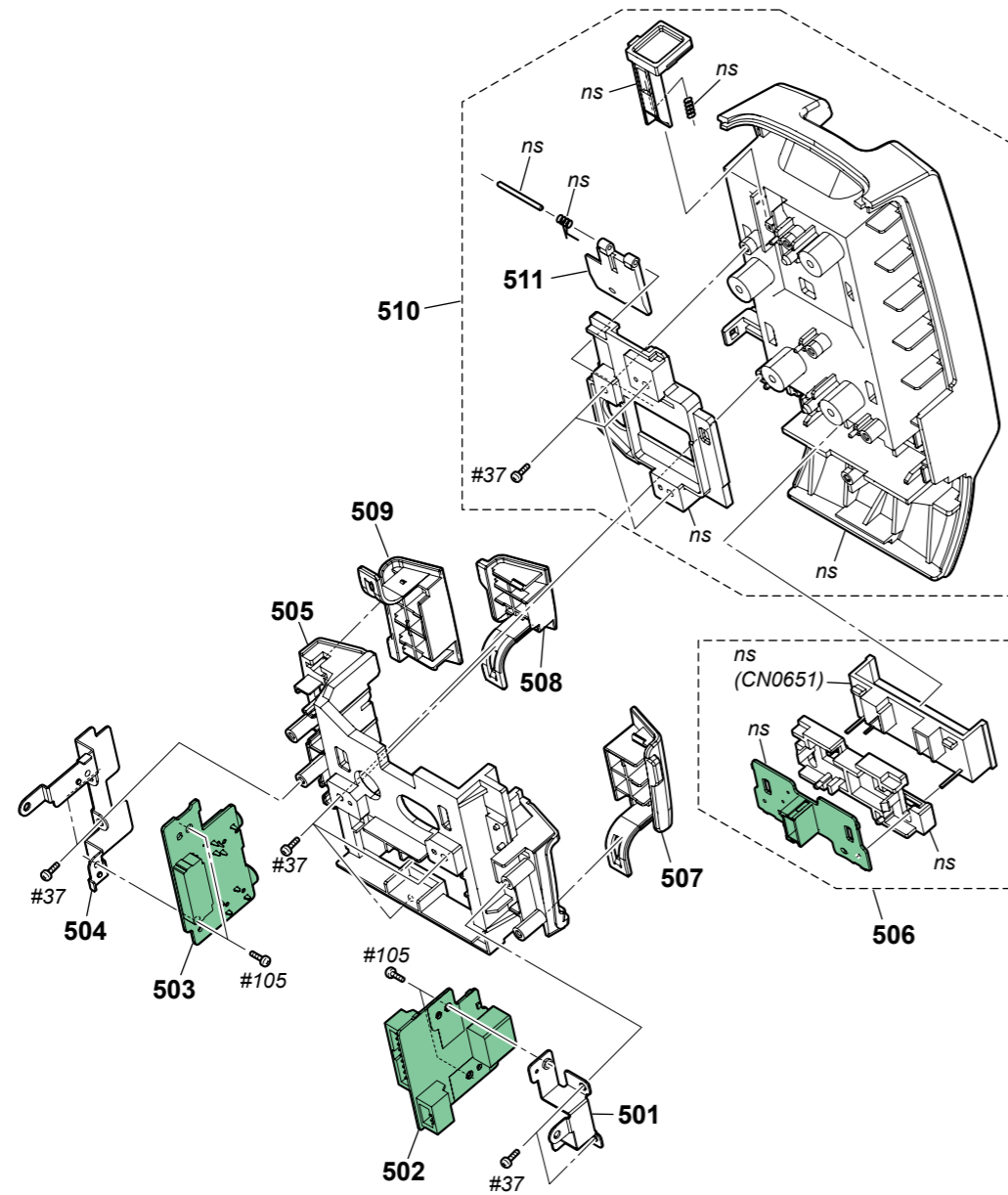
Note

Note: Refer to "Assembly-4: Installation Cautions of Harnesses (DI-003/DI-004/IJ-001)".

Note: "Assembly-4: Installation Cautions of Harnesses (DI-003/DI-004/IJ-001)"を参照してください。

2-1-11. BATTERY PANEL SECTION

ns : not supplied



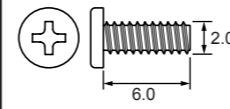
Ref. No.	Part No.	Description
* 501	3-283-953-01	PLATE, DC TERMINAL RETAINER
502	A-1799-380-A	DC-114 BOARD, COMPLETE
503	A-1799-379-A	HP-158 BOARD, COMPLETE
* 504	3-283-952-01	PLATE, HP TERMINAL RETAINER
505	X-2560-991-1	PANEL ASSY, JACK

Ref. No.	Part No.	Description
△ 506	A-1799-381-A	BA-012 BOARD, COMPLETE
507	3-284-038-01	COVER (DC), JACK
508	3-284-039-01	COVER (HP), JACK
509	3-284-040-11	COVER (LANC), JACK
510	X-2187-971-1	PANEL ASSY, BT
511	3-060-595-01	CLAW, BT LOCK
#37	3-080-206-31	SCREW, TAPPING, P2
#105	2-891-494-31	SCREW (M2), NEW TRUSTER, P2

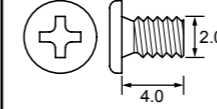
HXR-MC1500C/MC1500P/MC2000E/MC2000J/MC2000N/MC2000U

Screw

#37: M2.0 X 6.0 (Tapping)
(Black)
3-080-206-31

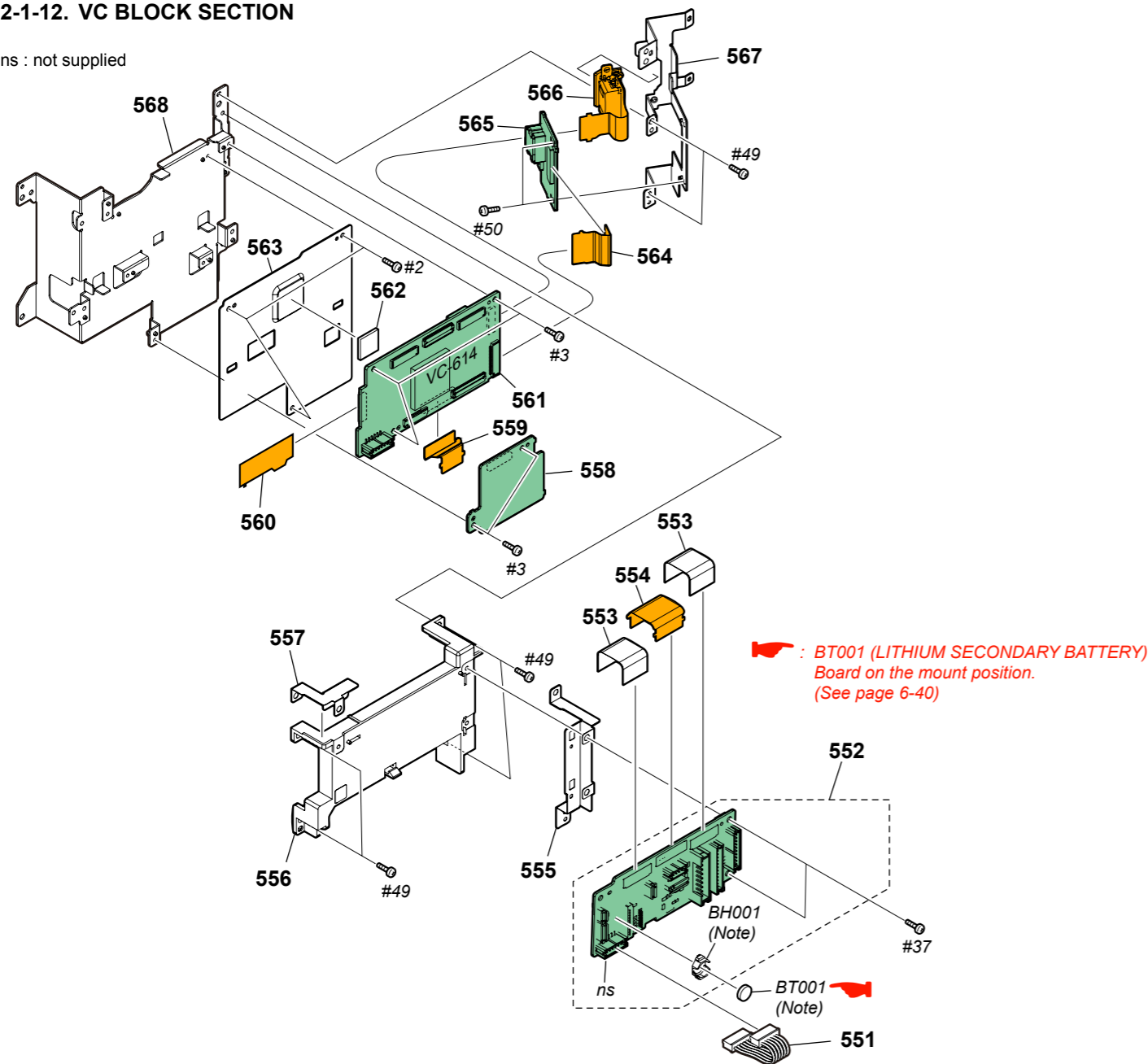


#105: M2.0 X 4.0
(Red)
2-891-494-31



2-1-12. VC BLOCK SECTION

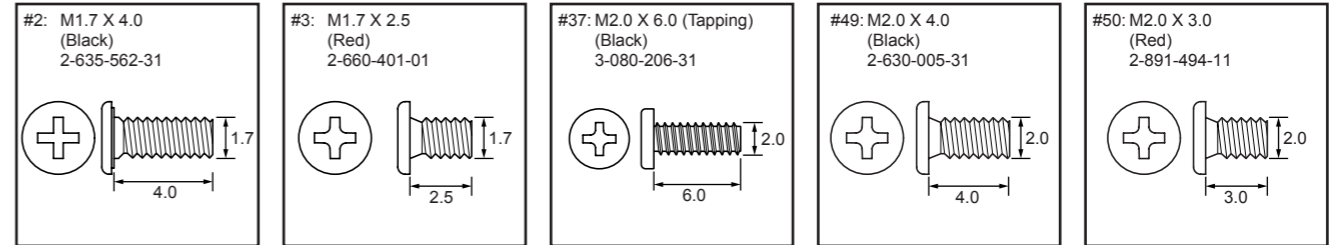
ns : not supplied



Ref. No.	Part No.	Description
551	1-967-649-11	HARNES (VI-119)
552	A-1799-367-A	IF171 BOARD, COMPLETE
553	1-883-564-11	CABLE, FLEXIBLE FLAT (FFC-242)
554	1-883-561-11	FP-1296 BOARD
* 555	4-263-740-01	PLATE (B), IF GROUND
556	4-263-738-01	HOLDER, IF
* 557	4-263-739-01	PLATE (A), IF GROUND
558	A-1799-366-A	MM-097 (SDHR) BOARD, COMPLETE (MC1500P/MC1500C)
558	A-1799-579-A	MM-097 (HDHRN) BOARD, COMPLETE (MC2000U/MC2000E/MC2000N/MC2000J)
559	1-880-227-11	FP-1176 FLEXIBLE BOARD

Ref. No.	Part No.	Description
560	1-880-294-11	FP-1180 FLEXIBLE BOARD
561	A-1799-642-A	VC-614 BOARD, COMPLETE (SERVICE)
562	4-264-292-01	SHEET (VC), RADIATION
* 563	4-264-291-01	HEAT SINK, VC
564	1-880-430-11	FP-1214 FLEXIBLE BOARD
565	A-1799-365-A	US-017 BOARD, COMPLETE
566	A-1752-133-A	FP-1149 FLEXIBLE BOARD, COMPLETE
* 567	4-263-676-01	BRACKET, USB
* 568	4-263-741-01	FRAME (VC), MAIN
△ BH001	1-251-928-21	SOCKET, BATTERY (Note)
△ BT001	1-756-135-31	BATTERY LITHIUM SECONDARY (Note)
#2	2-635-562-31	SCREW (M1.7)
#3	2-660-401-01	SCREW (M1.7), NEW TRU-STAR, P2
#37	3-080-206-31	SCREW, TAPPING, P2
#49	2-630-005-31	SCREW (M2), NEW TRUSTER, P2
#50	2-891-494-11	SCREW (M2), NEW TRUSTER, P2

Screw



Note

Caution:
Danger of explosion if battery is incorrectly replaced.
Replace only with the same or equivalent type.
Dispose of used batteries according to the instructions.

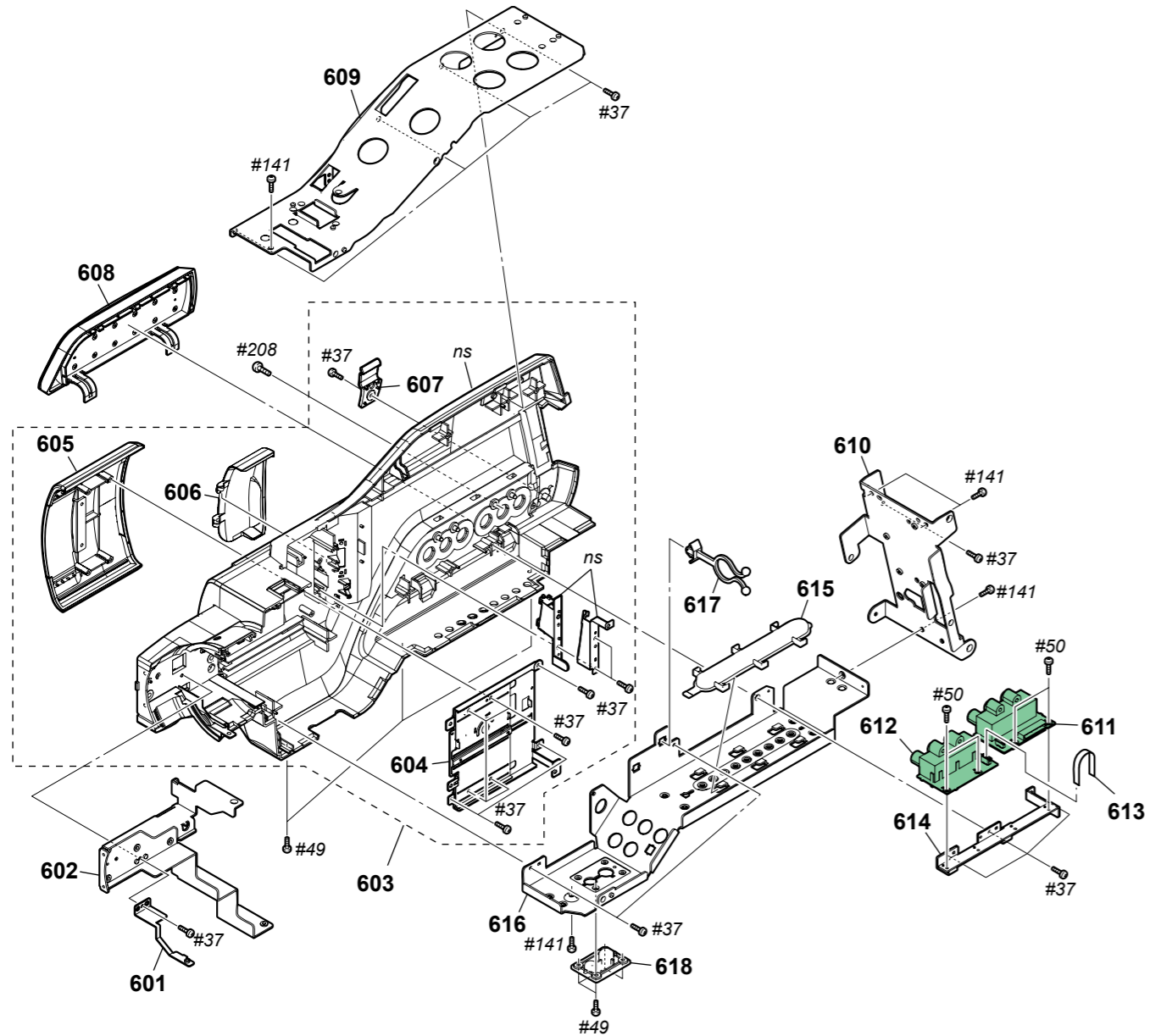
注意:
電池の交換は、正しく行わないと破裂する恐れがあります。
電池を交換する場合には必ず同じ型名の電池又は同等品と
交換してください。
使用済み電池は、取扱指示に従って処分してください。

Note: Replace the battery holder (BH001) together when replacing the lithium storage battery (BT001) on the IF-171 board. (The battery holder removed once cannot be used again.)
When mounting these parts, mount new battery holder first and attach new lithium storage battery next.

Note: IF-171基板のリチウム蓄電池 (BT001) を交換する場合はバッテリーホルダ (BH001) も同時に新品に交換してください。
(一度使用したバッテリーホルダは再使用できません。)
部品取り付けの際は、先にバッテリーホルダを取り付けてからリチウム蓄電池を装着してください。

2-1-13. CABINET (L) SECTION

ns : not supplied

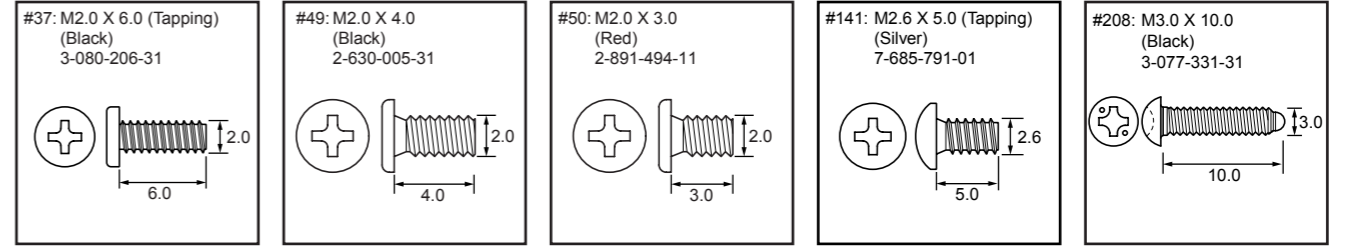


Ref. No.	Part No.	Description
* 601	3-283-934-01	BRACKET (LOWER), LR
* 602	3-283-933-01	FRAME, MAIN, F
603	X-2560-654-1	CABINET (L) ASSY (925)
604	X-2560-612-1	BASE ASSY, MS
605	X-2580-329-1	LID ASSY (925), SERVICE (M5)
606	4-263-682-11	LID, USB
607	4-263-687-01	CLAMP, AV
608	X-2560-633-1	LID ASSY (925), JK
* 609	3-283-931-01	FRAME, MAIN, T
* 610	3-283-932-01	FRAME, MAIN, R

Ref. No.	Part No.	Description
611	A-1799-582-A	JS-037 BOARD, COMPLETE
612	A-1799-580-A	JK-398 BOARD, COMPLETE
613	1-834-866-11	CABLE, FLEXIBLE FLAT (FFC-136)
* 614	4-263-678-01	BRACKET, JK
* 615	3-284-049-01	BASE, SHOULDER PAD FITTING
* 616	3-283-930-11	FRAME, MAIN, B
617	3-703-319-01	PURSE LOCK (DIA.15)
618	2-178-793-02	BRACKET (TRIPOD)
#37	3-080-206-31	SCREW, TAPPING, P2
#49	2-630-005-31	SCREW (M2), NEW TRUSTER, P2
#50	2-891-494-11	SCREW (M2), NEW TRUSTER, P2
#141	7-685-791-01	SCREW +PTT 2.6X5 (S)
#208	3-077-331-31	+BV3 (3-CR)

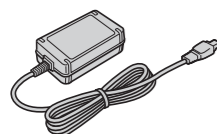
HXR-MC1500C/MC1500P/MC2000E/MC2000J/MC2000N/MC2000U

Screw



• EXCEPT J MODEL Checking supplied accessories.

Note: This item is supplied with the unit as an accessory, but is not prepared as a service part.



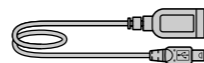
AC Adaptor
 △ 1-479-286-51



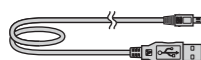
Power Cord (Mains lead)
 △ 1-832-121-31 (MC1500C)
 △ 1-834-482-21 (MC1500P / MC2000E / MC2000N)
 △ 1-834-484-31 (MC2000U)
 △ 1-836-251-11 (MC2000J)



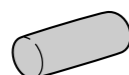
A/V connecting Cable
 1-823-364-21



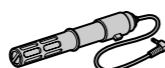
USB Adaptor cable
 1-837-533-11



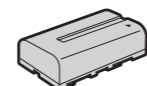
USB Cable
 1-835-993-31



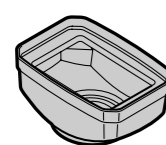
Wind screen
 3-283-027-01



Microphone (ECM-PS1)
 1-542-750-12



Rechargeable Battery Pack (NP-F570)
 (Note)



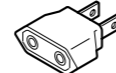
Lens hood
 X-2560-599-1



Eye cup
 3-283-026-01



Lens cap
 X-2187-867-1



Conversion (2P) Adaptor
 △ 1-569-008-12 (MC2000N)



CD-ROM
 "Video Camera Application Software"
 "PMB" (including "PMB Help")
 4-264-214-01



Operating Guide
 4-263-129-01 (JAPANESE)
 * 4-263-129-11 (ENGLISH) (MC2000N / MC2000U)
 * 4-263-139-11 (ENGLISH) (MC1500P / MC2000E)
 * 4-263-139-21 (SIMPLIFIED CHINESE)



CD-ROM "Manual for Digital HD Video Camera Recorder"
 4-263-215-01

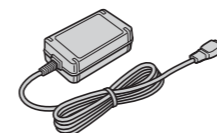
- Operating Guide (PDF)
- * 4-263-129-01 (JAPANESE)
 - * 4-263-129-11 (ENGLISH)
 - * 4-263-129-21 (FRENCH)
 - * 4-263-139-11 (ENGLISH)
 - * 4-263-139-21 (SIMPLIFIED CHINESE)
 - * 4-263-139-31 (FRENCH)
 - * 4-263-139-41 (SPANISH)
 - * 4-263-139-51 (ITALIAN)
 - * 4-263-139-61 (GERMAN)

The CD-ROM supplied contains all of language version of the Instruction Manual in pdf for printing.

- The printed matter is not supplied. If required, please order it with the part number below.

• J MODEL 付属品

Note : 当商品はアクセサリとして同梱されておりますがサービス用補修部品としては準備しておりません。



ACアダプター
 △ 1-479-286-51



電源コード
 △ 1-836-251-11



A/V接続ケーブル
 1-823-364-21



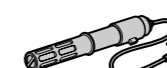
USBアダプターケーブル
 1-837-533-11



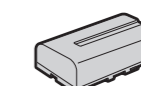
USBケーブル
 1-835-993-31



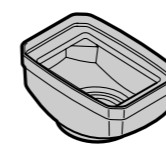
ウィンドスクリーン
 3-283-027-01



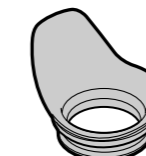
マイク (ECM-PS1)
 1-542-750-12



リチャージブルバッテリーパック (NP-F570)
 (Note)



レンズフード
 X-2560-599-1



アイカップ
 3-283-026-01



レンズキャップ
 X-2187-867-1



CD-ROM
 "Video Camera Application Software"
 "PMB" (ソフトウェア、「PMB Help」を含む)
 4-264-214-01



取扱説明書
 4-263-129-01 (日本語)



CD-ROM "Manual for Digital HD Video Camera Recorder"
 4-263-215-01

取扱説明書 (PDF)

取扱説明書(PDF)は全ての言語が付属品のCD-ROMに含まれています。CD-ROM内の取扱説明書(PDF)につきましては印刷しての供給は対応しておりません。

Note 2: 日本国内については印刷での部品供給は行っておりません。