

HXR-NX1

SERVICE MANUAL

Ver. 1.1 2016.02

Revised-1

Replace the previously issued SERVICE MANUAL 9-896-701-11 with this Manual.



*E Model
Indian Model*

SERVICE NOTE (Check the following note before the service.)

- 1-1. POWER SUPPLY DURING REPAIRS
- 1-2. PRECAUTION ON REPLACING THE BOARD
- 1-3. SELF-DIAGNOSIS FUNCTION

The components identified by mark \triangle or dotted line with mark \triangle are critical for safety. Replace only with part number specified.	Les composants identifiés par une marque \triangle sont critiques pour la sécurité. Ne les remplacer que par une pièce portant le numéro spécifié.
--	--

Digital HD Video Camera Recorder

SONY®

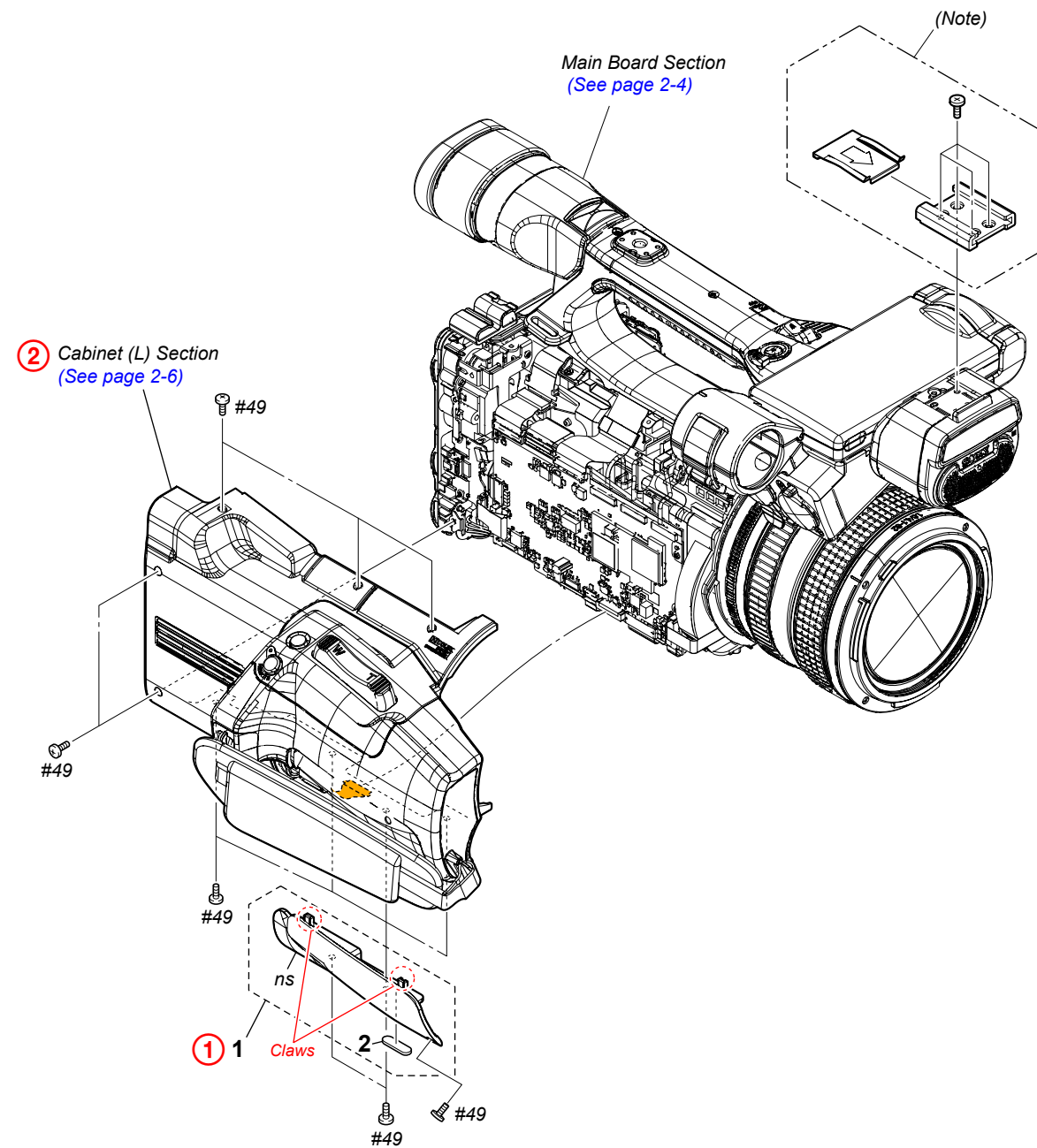
Revision History

Ver.	Date	History	Contents	S.M. Rev. issued
1.0	2014.06	Official Release	—	—
1.1	2016.02	Revised-1 (A1 15-116)	<ul style="list-style-type: none"> • Addition of Indian model. • Change of ACCESSORIES. Page 2, 2-1, 2-17 	Yes

2-1. EXPLODED VIEWS

2-1-1. OVERALL SECTION

ns: not supplied



Ref. No.	Part No.	Description
1	X-2515-789-1	COVER ASSY, GRIP
2	2-178-805-01	FOOT, RUBBER

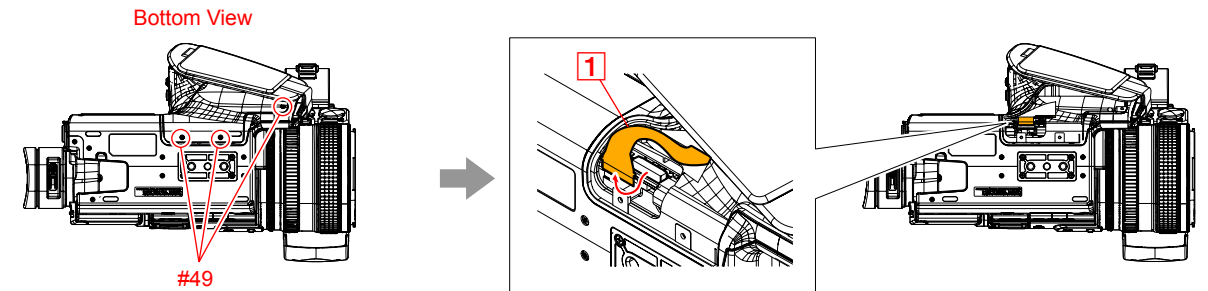
Ref. No.	Part No.	Description
#49	2-630-005-31	SCREW (M2), NEW TRUSTER, P2

HXR-NX1

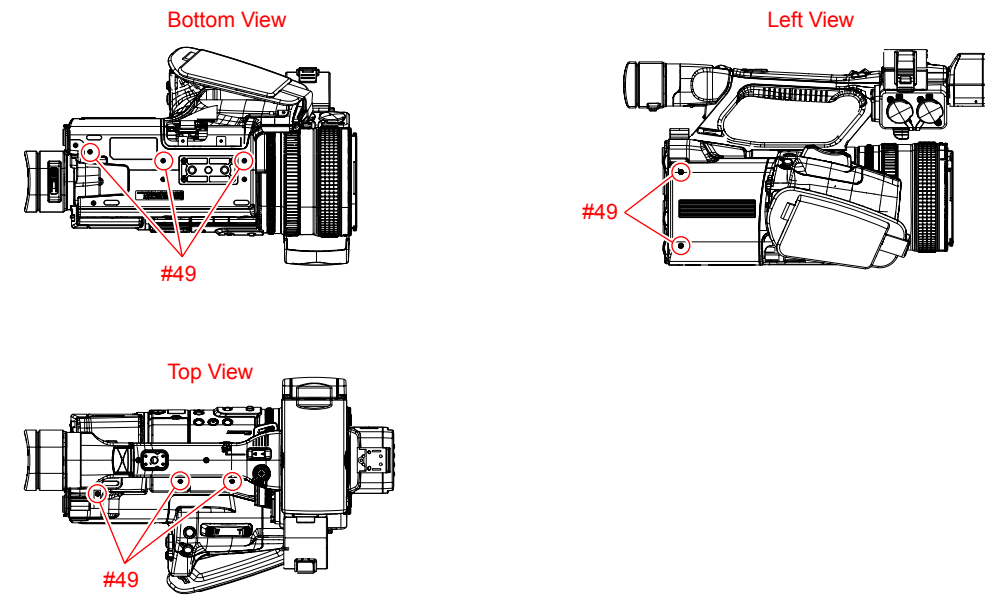
DISASSEMBLY

1. Remove in numerical order (① to ②) in the left figure.

① #49 X 3 → Grip Cover Assy → Disconnect the Flexible Board ①

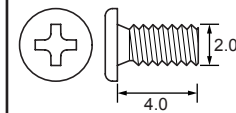


② #49 X 8



Screw

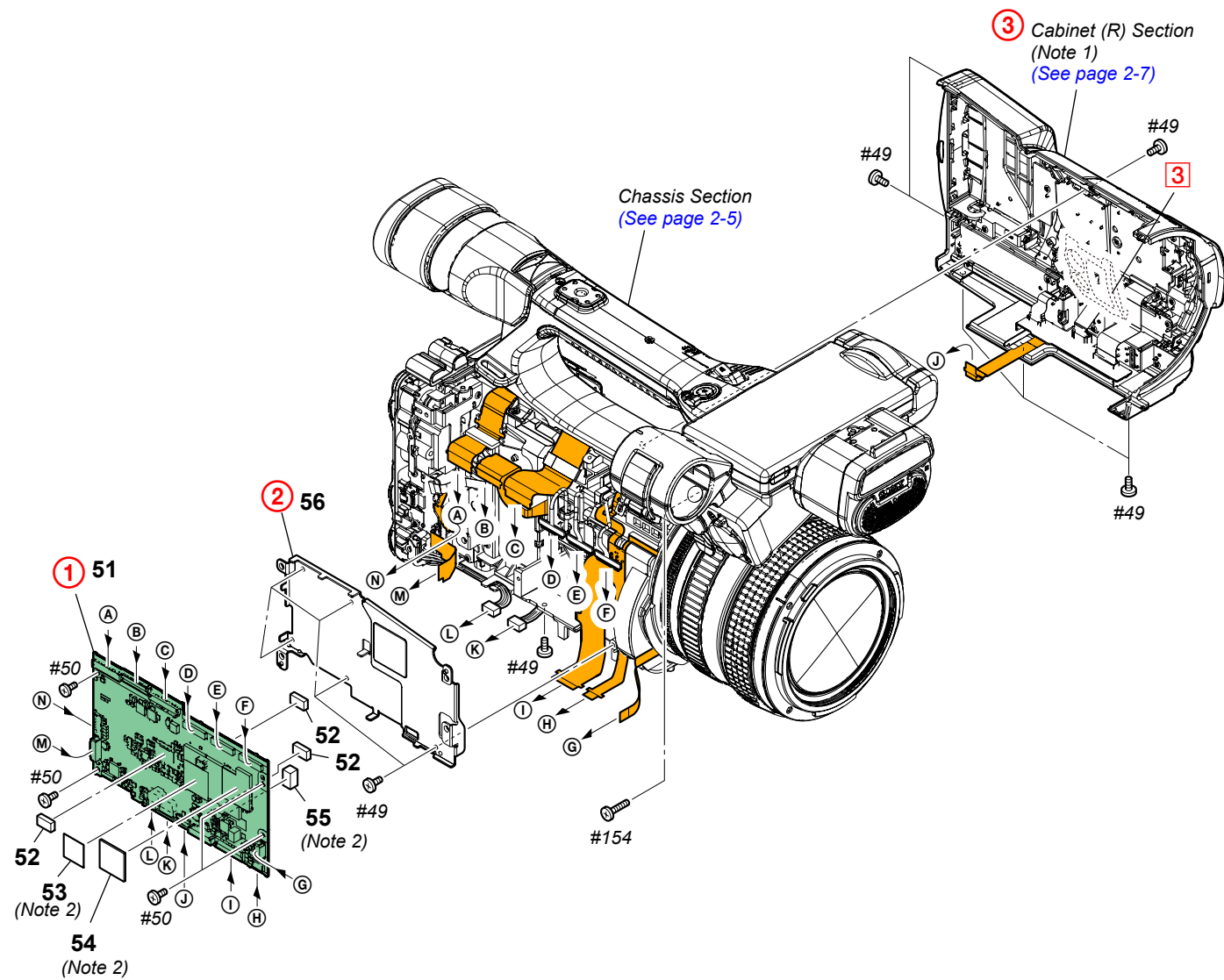
#49: M2.0 X 4.0
(Black)
2-630-005-31



Note

Note: These items are supplied with the unit as accessories, but are not prepared as service parts. Refer to the Operating Guide for these parts.

2-1-2. MAIN BOARD SECTION



Ref. No.	Part No.	Description
51	A-2057-409-A	VC-1020 BOARD, COMPLETE (SERVICE)
* 52	4-170-751-01	SPACER (A), VC
53	4-527-208-01	SHEET, VC COUNTERMEASURE (Note 2)
54	4-488-870-01	SHEET, VC RADIATION (Note 2)
55	4-527-210-01	SPACER (936), VC (Note 2)

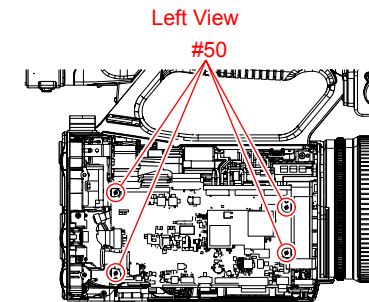
Ref. No.	Part No.	Description
* 56	4-165-252-01	FRAME, MAIN
#49	2-630-005-31	SCREW (M2), NEW TRUSTER, P2
#50	2-891-494-11	SCREW (M2), NEW TRUSTER, P2
#154	7-627-556-97	SCREW, PRECISION +P2.6X8 TYPE 1

HXR-NX1

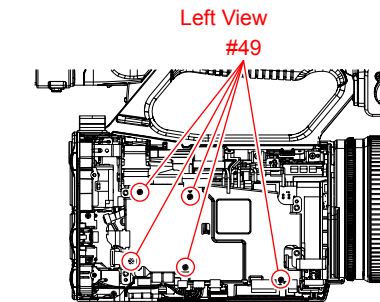
DISASSEMBLY

1. Remove in numerical order (1) to (3) in the left figure.

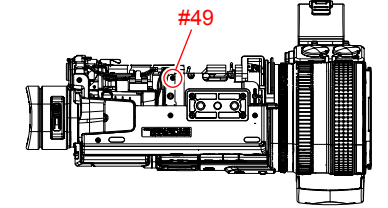
① #50 X 4



② #49 X 6

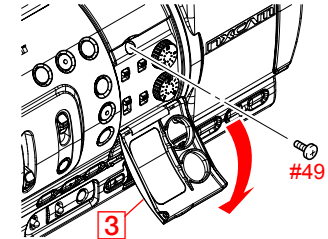


Bottom View

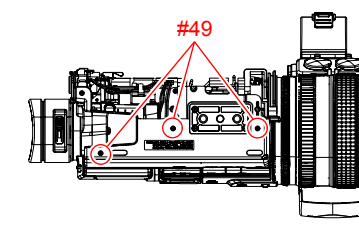


③ Open Lid AL (3) → #49 X 6 → #154 X 1

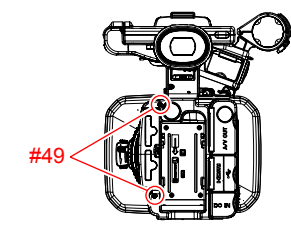
Right View



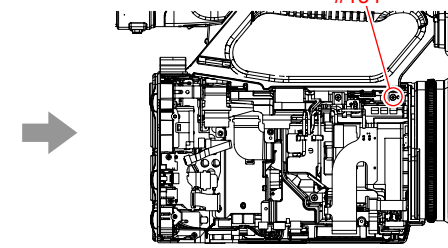
Bottom View



Back View

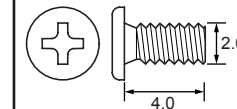


Left View

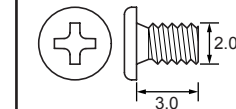


Screw

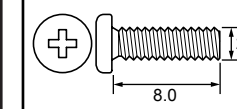
#49: M2.0 X 4.0
(Black)
2-630-005-31



#50: M2.0 X 3.0
(Red)
2-891-494-11



#154: M2.6 X 8.0
(Silver)
7-627-556-97

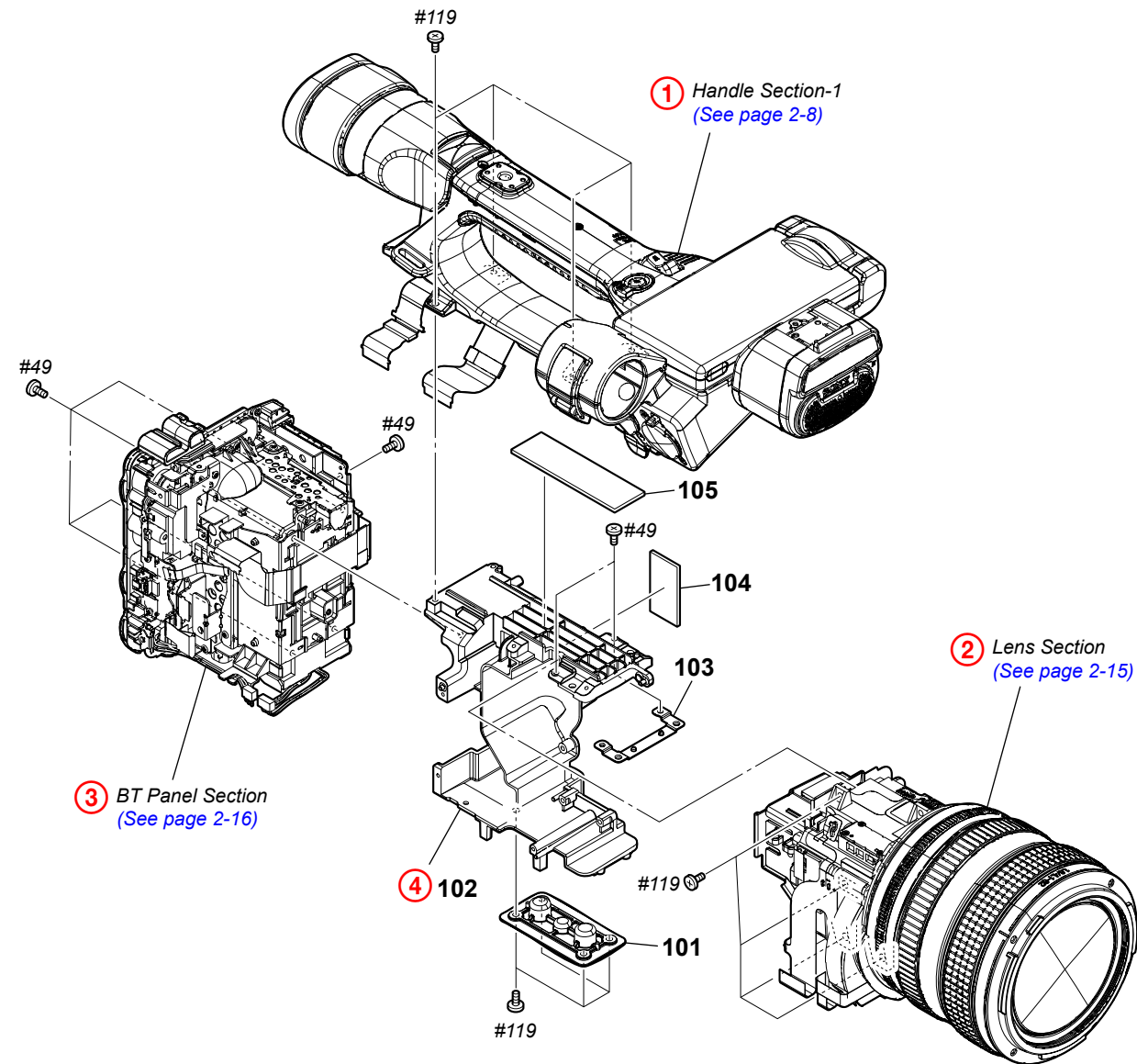


Note

Note 1: Refer to "Assembly-6: On installation of the Cabinet (R) section, adjust the position of the ND Filter Switch and ND Filter Lever" when installing.

Note 2: Do not reuse these Parts because their adhesive force decreases when they are removed once.

2-1-3. CHASSIS SECTION



Ref. No.	Part No.	Description
101	4-119-234-11	WASHER, TRIPOD
* 102	4-165-251-01	CHASSIS, MAIN
103	4-119-237-01	PLATE (F), MC FIXED
* 104	4-165-225-01	SHEET (3218T1), RADIATION
105	4-165-224-01	SHEET (6018T1), RADIATION

Ref. No.	Part No.	Description
#49	2-630-005-31	SCREW (M2), NEW TRUSTER, P2
#119	7-627-556-58	SCREW +P 2.6X5

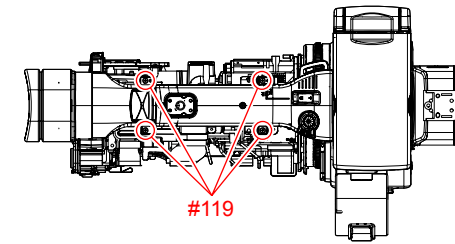
HXR-NX1

DISASSEMBLY

1. Remove in numerical order (1) to (4) in the left figure.

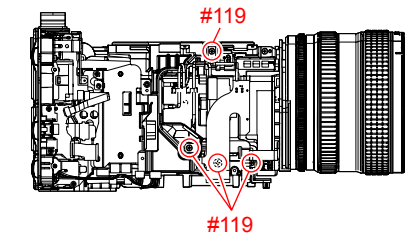
① #119 X 4

Top View



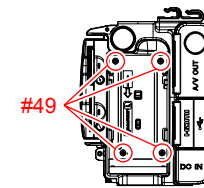
② #119 X 4

Left View

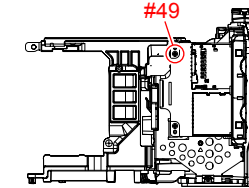


③ #49 X 5

Back View

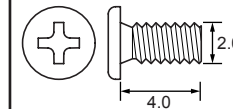


Right View

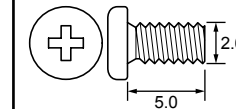


Screw

#49: M2.0 X 4.0
(Black)
2-630-005-31

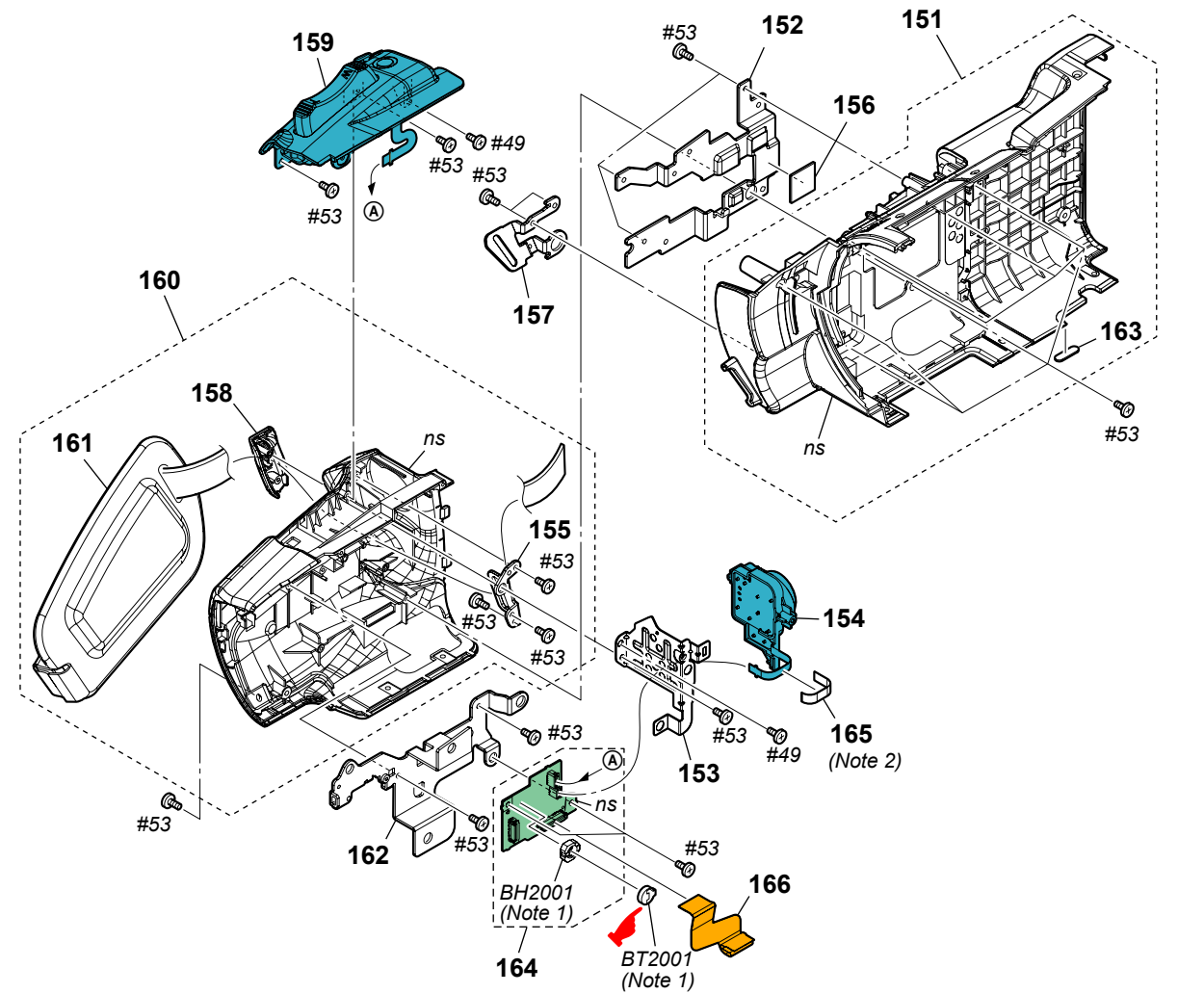



#119: M2.6 X 5.0
(Black)
7-627-556-58



2-1-4. CABINET (L) SECTION

ns: not supplied

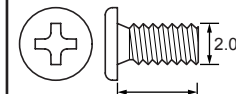


 : BT2001 (LITHIUM STORAGE BATTERY)
Board on the mount position.
(See page 6-43)

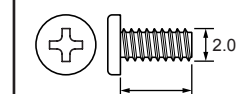
Ref. No.	Part No.	Description	Ref. No.	Part No.	Description
151	X-2588-889-1	CABINET (L (93600)) ASSY	161	2-178-804-01	BELT, GRIP
* 152	4-488-859-01	HEAT SINK, L	* 162	4-488-860-01	HEAT SINK, G
* 153	4-165-326-01	FRAME, PS	163	2-178-805-01	FOOT, RUBBER
154	1-487-447-11	SWITCH BLOCK, CONTROL (PS94000)	164	A-1994-366-A	GC-1003 BOARD, COMPLETE
* 155	4-165-331-01	BRACKET (REAR), GRIP BELT	165	4-488-862-01	SHEET, PS PROTECTION (Note 2)
156	4-527-209-01	SHEET (L), RADIATION	166	1-889-609-11	FP-2217 FLEXIBLE BOARD
* 157	4-165-327-01	BRACKET (FRONT), GRIP BELT	△ BT2001	1-756-134-15	BATTERY, LITHIUM (SECONDARY) (Note 1)
* 158	4-165-330-01	HOLDER, GRIP BELT	△ BH2001	1-251-928-21	SOCKET, BATTERY (Note 1)
159	1-487-448-41	SWITCH BLOCK, CONTROL (PZ94000)	#49	2-630-005-31	SCREW (M2), NEW TRUSTER, P2
160	X-2541-675-1	CABINET G (32500) ASSY	#53	3-080-206-21	SCREW, TAPPING, P2

Screw

#49: M2.0 X 4.0
(Black)
2-630-005-31



#53: M2.0 X 5.0 (Tapping)
(Black)
3-080-206-21



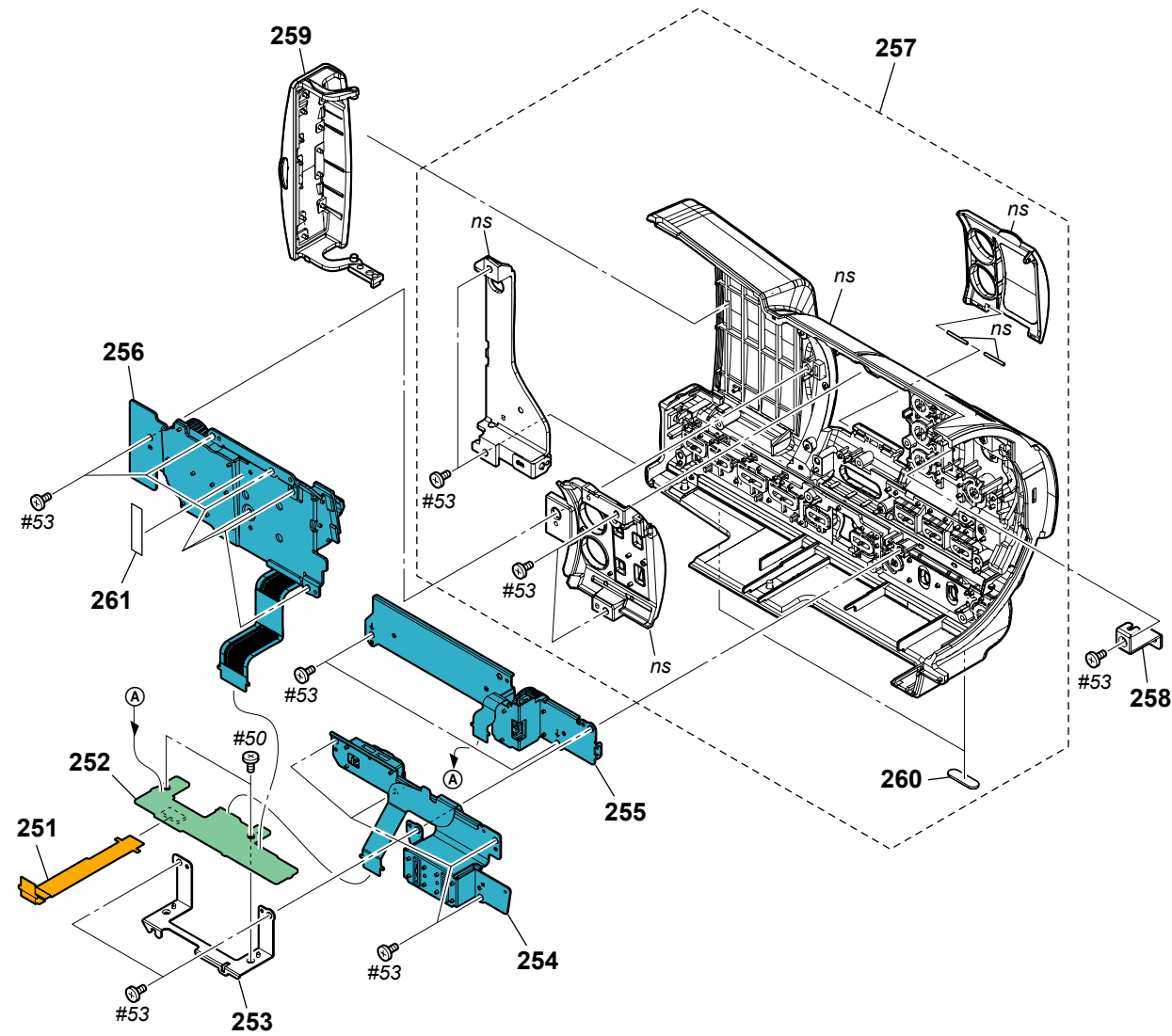
Note

Note 1: Replace the battery holder (BH2001) together when replacing the lithium storage battery (BT2001) on the GC-1003 board. (The battery holder removed once cannot be used again.)
When mounting these parts, mount new battery holder first and attach new lithium storage battery next.

Note 2: Do not reuse these Parts because their adhesive force decreases when they are removed once.

2-1-5. CABINET (R) SECTION

ns: not supplied



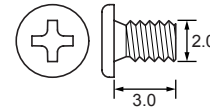
Ref. No.	Part No.	Description
251	1-879-858-21	FP-1159 FLEXIBLE BOARD
252	A-1994-367-A	CK-1008 BOARD, COMPLETE
* 253	4-165-333-01	SHEET METAL, CK
254	1-487-451-11	SWITCH BLOCK, CONTROL (CF94000)
255	1-487-449-11	SWITCH BLOCK, CONTROL (KP94000)
256	1-487-450-11	SWITCH BLOCK, CONTROL (AU94000)
257	X-2589-933-1	CABINET (R (93400)) ASSY

Ref. No.	Part No.	Description
* 258	4-119-383-01	PLATE, CABINET (R) FIXED
259	X-2590-160-1	LID SUB ASSY (93400), MS
260	4-165-229-01	FOOT, RUBBER
261	4-543-208-01	SHEET (936),LIGHT INTERCEPTION
#50	2-891-494-11	SCREW (M2), NEW TRUSTER, P2
#53	3-080-206-21	SCREW, TAPPING, P2

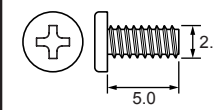
HXR-NX1

Screw

#50: M2.0 X 3.0
(Red)
2-891-494-11

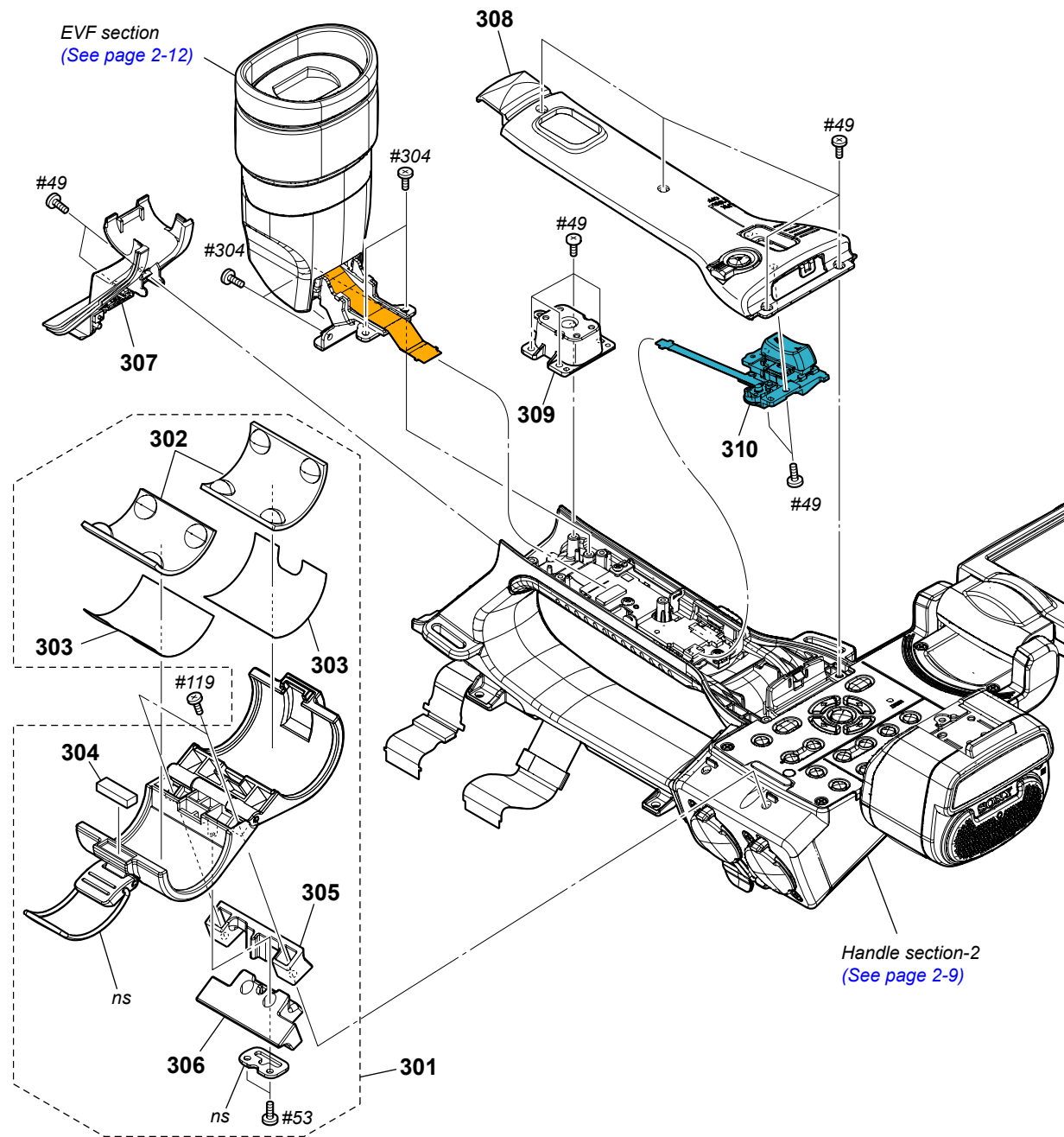


#53: M2.0 X 5.0 (Tapping)
(Black)
3-080-206-21



2-1-6. HANDLE SECTION-1

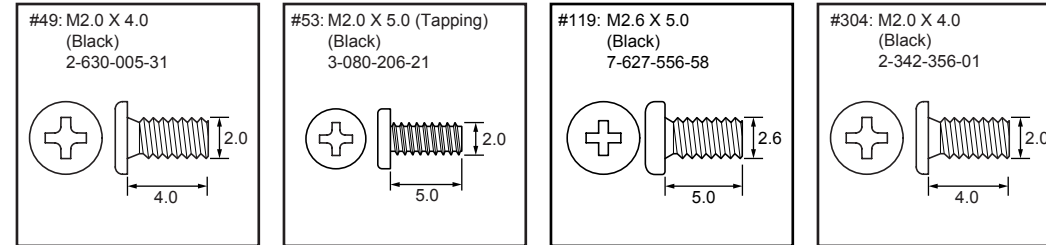
ns: not supplied



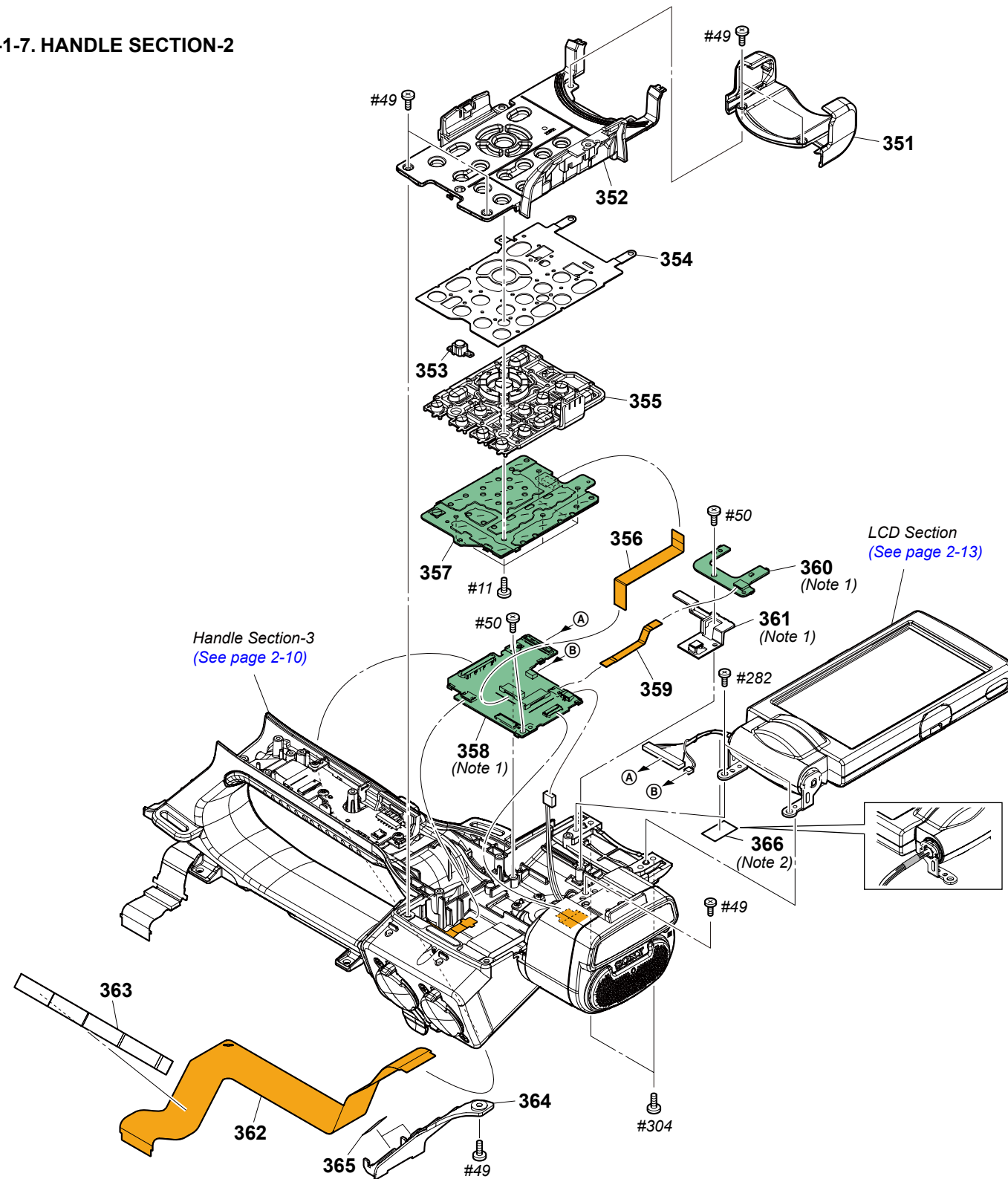
Ref. No.	Part No.	Description
301	X-2342-570-1	HOLDER (93000) ASSY,MICROPHONE
302	3-284-080-01	RUBBER, MICROPHONE
303	3-284-081-11	SHEET, RUBBER ADHESIVE
304	3-284-621-11	CUSHION, MICROPHONE HOLDER
305	3-284-075-02	COVER, MICROPHONE HOLDER RUBBER
306	4-119-861-01	RUBBER (93000), HOLDER
307	X-2588-893-1	COVER (93600) ASSY, (REAR)

Ref. No.	Part No.	Description
308	X-2588-892-1	CABINET (93600) ASSY, (UPPER)
309	3-288-538-11	SHOE, REAR (COLD)
310	1-480-298-11	SWITCH BLOCK, CONTROL (GZ92000)
#49	2-630-005-31	SCREW (M2), NEW TRUSTER, P2
#53	3-080-206-21	SCREW, TAPPING, P2
#119	7-627-556-58	SCREW +P 2.6X5
#304	2-342-356-01	SCREW (M2 (ECO, EG))

Screw



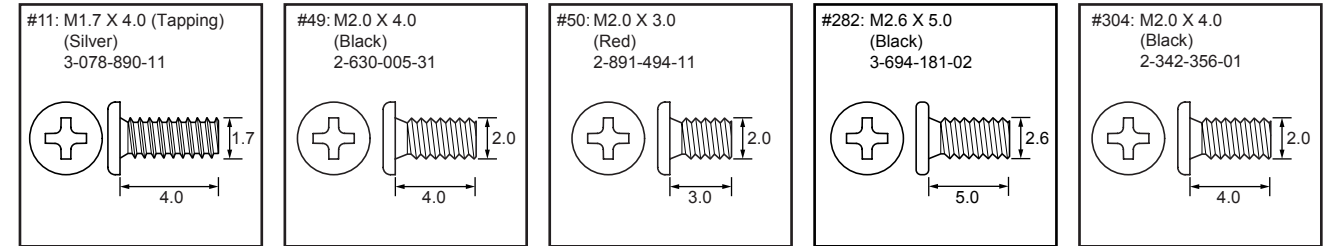
2-1-7. HANDLE SECTION-2



Ref. No.	Part No.	Description
351	4-460-888-02	CABINET (SIDE), HANDLE
352	X-2589-026-1	PANEL (93600) ASSY, CONTROL
353	4-488-869-01	LIGHT, SENSOR GUIDE
354	X-2589-027-1	PLATE ASSY, PANEL GROUND
355	4-165-373-03	BUTTON, CONTROL
356	1-846-791-11	FLEXIBLE FLAT CABLE (FFC-1046)
357	A-1994-394-A	KY-1007 BOARD, COMPLETE
358	A-2057-229-A	PI-1002 BOARD, COMPLETE (Note 1)
359	1-836-006-11	FLEXIBLE FLAT CABLE (FFC-172)
360	A-1994-375-A	SE-1005 BOARD, COMPLETE (Note 1)

Ref. No.	Part No.	Description
361	4-460-887-01	CLAMP, HARNESS (Note 1)
362	1-889-008-11	FP-2174 FLEXIBLE BOARD
363	4-169-934-01	SHEET (FP1157), COUNTERMEASURE
364	4-165-281-01	CABINET, HANDLE (FRONT)
* 365	4-174-174-01	CUSHION, HANDLE (FRONT) CABINET
366	4-475-841-11	SHEET (HN) (Note 2)
#11	3-078-890-11	SCREW, TAPPING
#49	2-630-005-31	SCREW (M2), NEW TRUSTER, P2
#50	2-891-494-11	SCREW (M2), NEW TRUSTER, P2
#282	3-694-181-02	TYPE1, AROCK PRECISION +P2.6X5
#304	2-342-356-01	SCREW (M2 (ECO, EG))

Screw

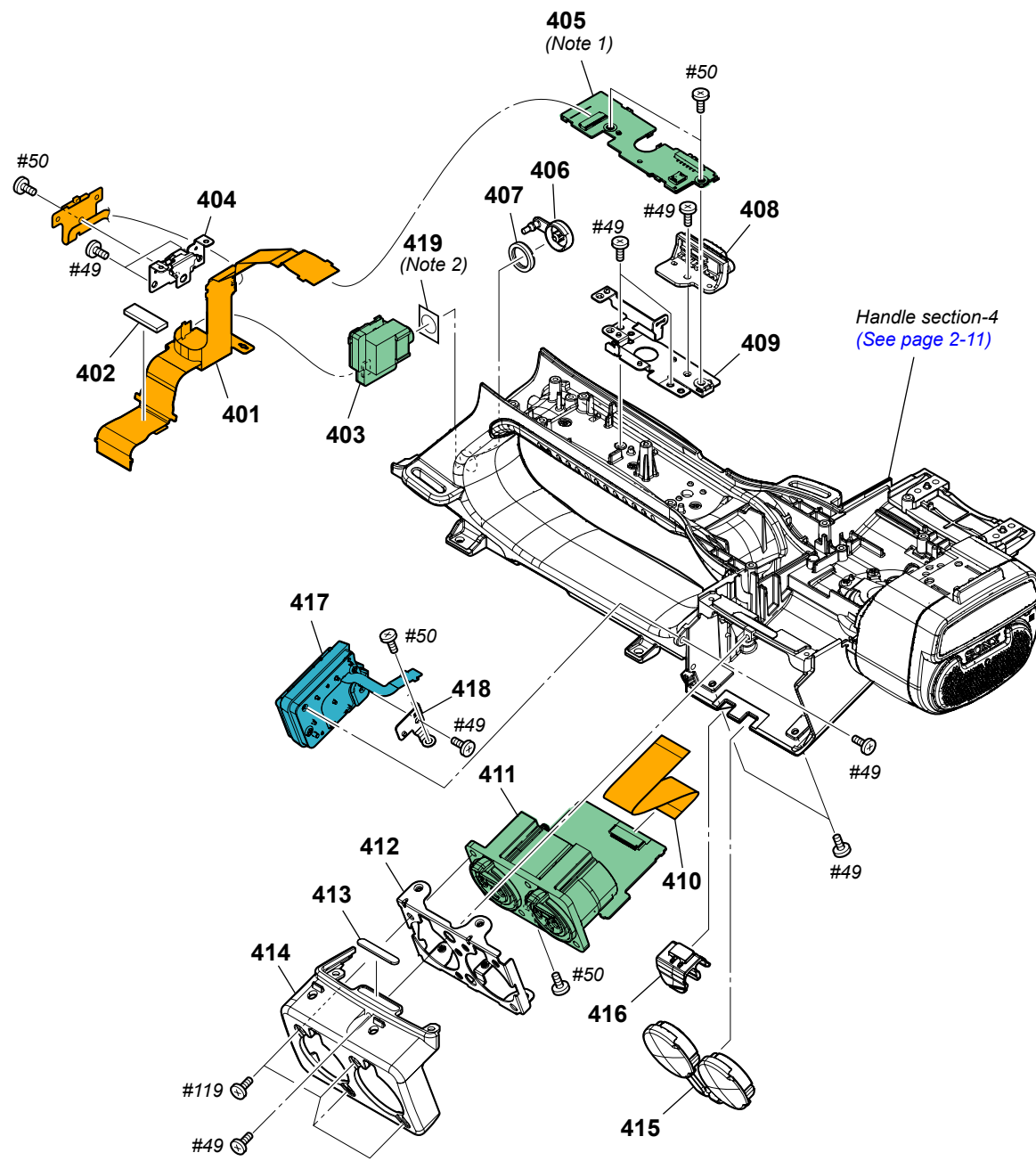


Note

Note 1: Refer to "Assembly-4: How to arrange Harnesses and Flexible Board" when installing.

Note 2: Do not reuse these Parts because their adhesive force decreases when they are removed once.

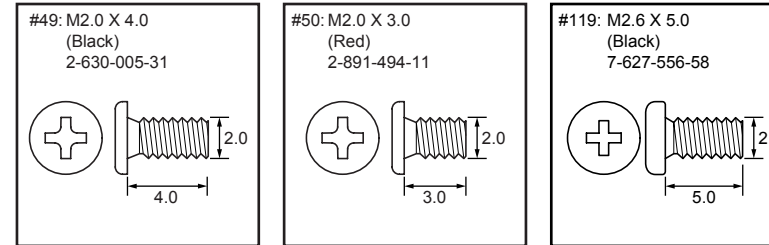
2-1-8. HANDLE SECTION-3



Ref. No.	Part No.	Description
401	A-1994-397-A	FP-2170 FLEXIBLE BOARD, COMPLETE
* 402	4-175-181-01	SHEET (FP1152), WATERPROOF
403	A-1994-395-A	HP-1005 BOARD, COMPLETE
* 404	4-165-280-01	BRACKET, REAR TALLY
405	A-1994-396-A	HG-1002 BOARD, COMPLETE (Note 1)
406	4-165-284-01	COVER, HP JACK
407	3-061-234-01	NUT (M6X0.5)
408	X-2188-599-1	KNOB ASSY, ZOOM SELECTION
* 409	4-165-232-01	BRACKET (GP), HG
410	1-834-244-11	FLEXIBLE FLAT CABLE (FFC-116)
411	A-1994-374-A	XL-1003 BOARD, COMPLETE
412	4-531-779-01	BRACKET (93600), XL

Ref. No.	Part No.	Description
413	3-288-474-01	RUBBER, PANEL RETAINER
414	4-165-282-31	COVER, XLR
415	4-165-285-01	COVER, XLR RUBBER
416	2-892-095-01	CLAMP, CABLE
417	1-480-870-21	SWITCH BLOCK, CONTROL (XS93000)
418	4-165-286-01	HOLDER, XS BLOCK
419	4-476-923-01	SHEET (HP) (Note 2)
#49	2-630-005-31	SCREW (M2), NEW TRUSTER, P2
#50	2-891-494-11	SCREW (M2), NEW TRUSTER, P2
#119	7-627-556-58	SCREW +P 2.6X5

Screw

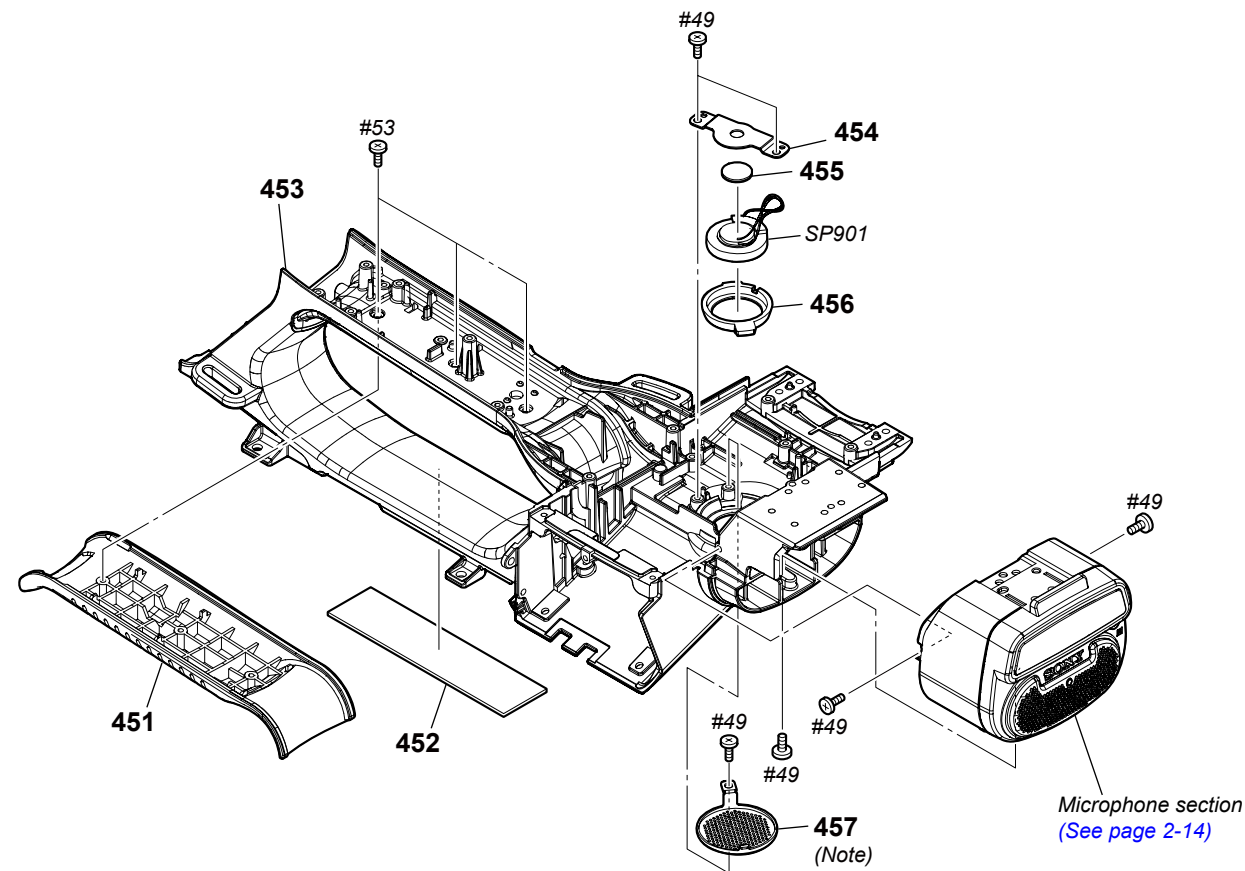


Note

Note 1: Refer to "Assembly-5: On installation of the HG-1002 Board, adjust the position of the switch".

Note 2: Do not reuse these Parts because their adhesive force decreases when they are removed once.

2-1-9. HANDLE SECTION-4

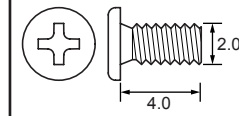


Ref. No.	Part No.	Description
451	4-165-278-01	GRIP
452	4-165-224-01	SHEET (6018T1), RADIATION
453	4-488-866-01	HANDLE
* 454	3-288-526-01	RETAINER, SPEAKER
* 455	4-488-867-01	CUSHION, SPEAKER

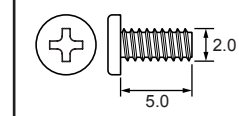
Ref. No.	Part No.	Description
456	2-178-550-01	HOLDER, SPEAKER
* 457	2-178-566-01	GRILLE, SPEAKER (Note)
SP901	1-858-075-41	SPEAKER (1.8CM)
#49	2-630-005-31	SCREW (M2), NEW TRUSTER, P2
#53	3-080-206-21	SCREW, TAPPING, P2

Screw

#49: M2.0 X 4.0
(Black)
2-630-005-31



#53: M2.0 X 5.0 (Tapping)
(Black)
3-080-206-21

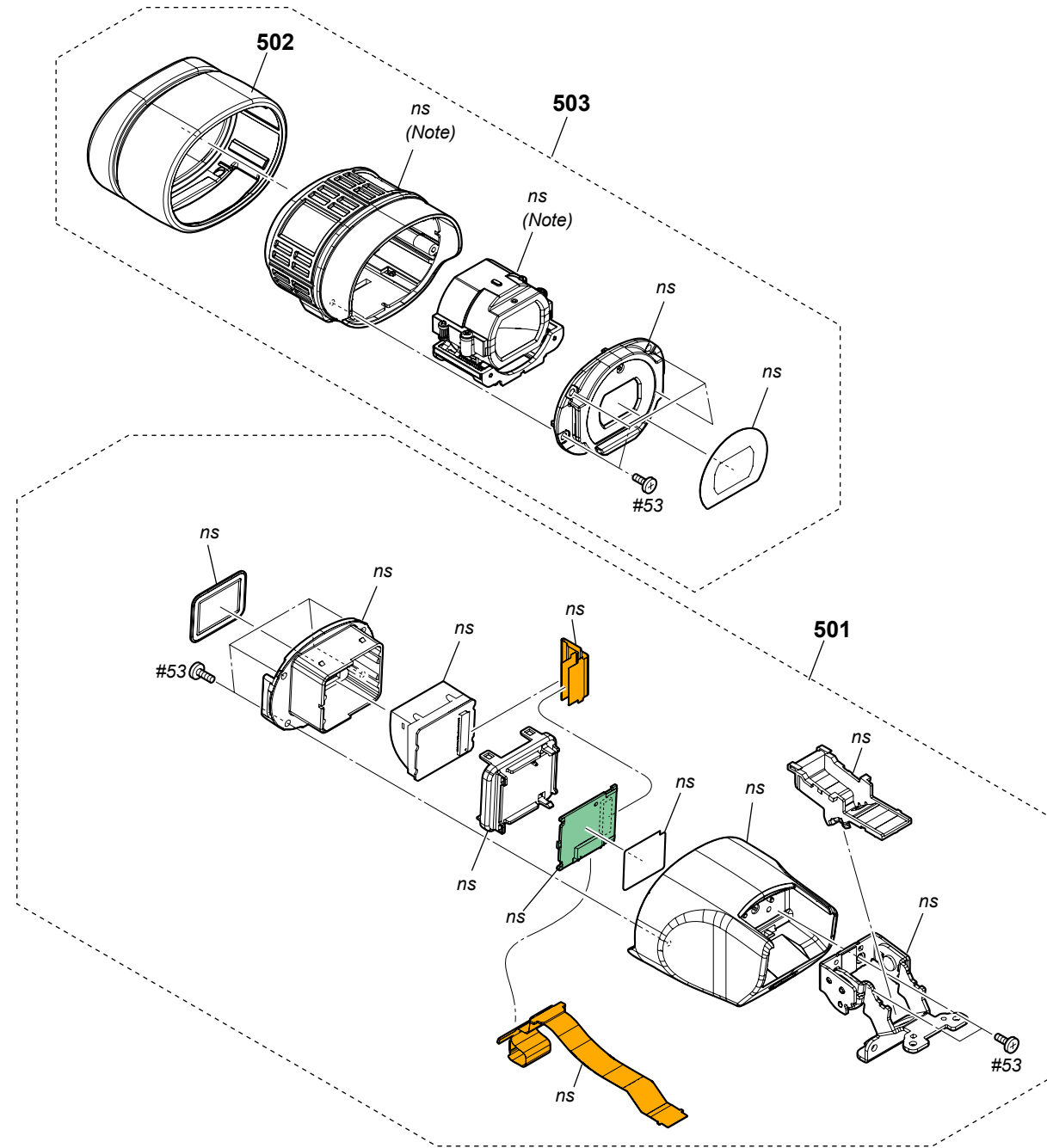


Note

Note: Refer to "Assembly-3: How to bend the Speaker Grille" when installing.

2-1-10. EVF SECTION

ns: not supplied

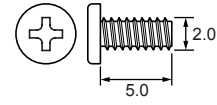


Ref. No.	Part No.	Description
501	A-2033-056-A	EVF BLOCK ASSY (SERVICE)
502	4-119-301-01	EYE CUP (SMALL)
503	A-1981-924-A	EYE CUP (40400) ASSY (SERVICE)
#53	3-080-206-21	SCREW, TAPPING, P2

HXR-NX1

Screw

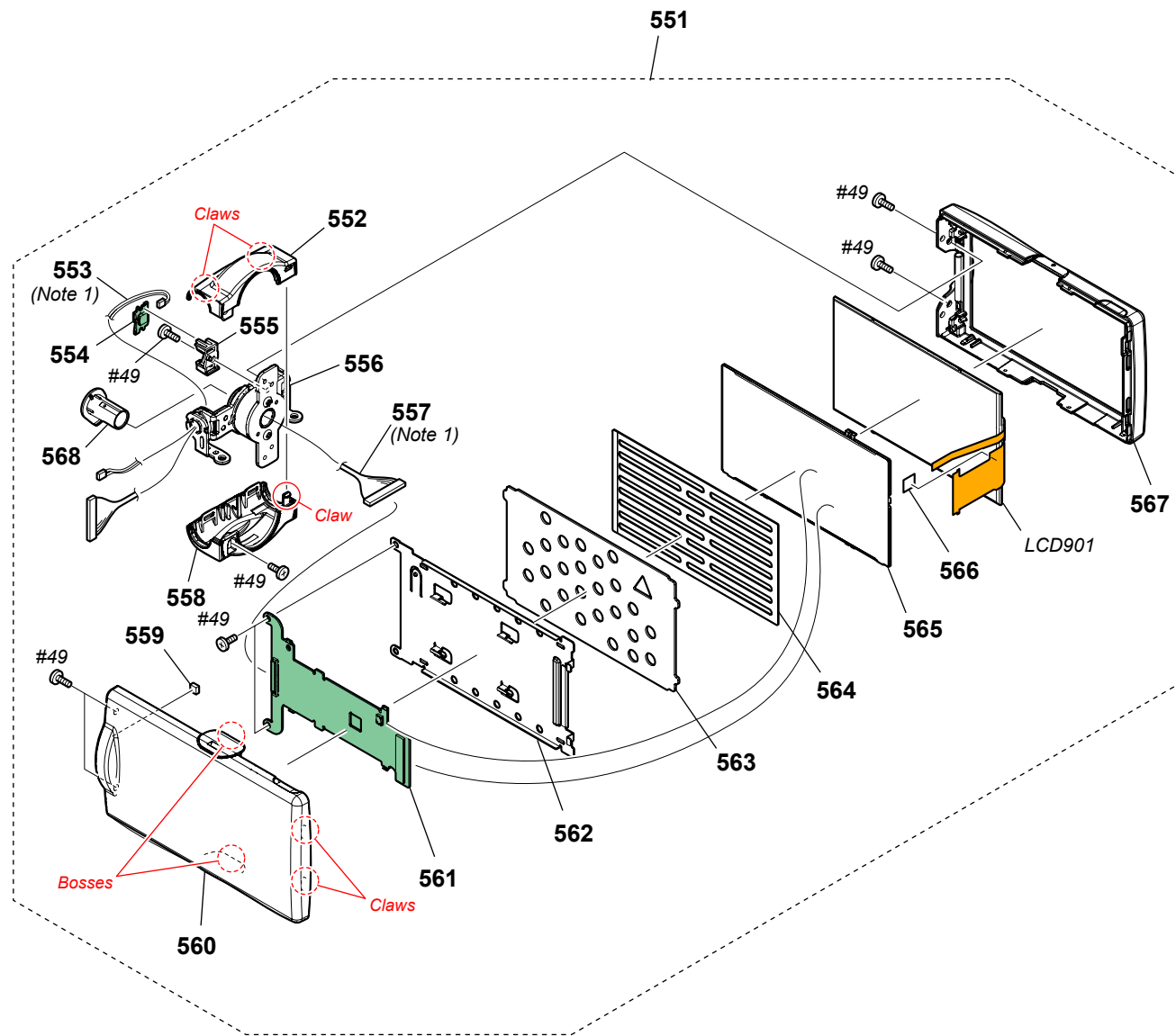
#53: M2.0 X 5.0 (Tapping)
(Black)
3-080-206-21



Note

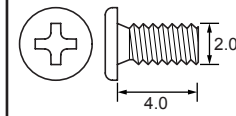
Note: Refer to "Assembly-1: Confirm the Diopter Adjustment Lever is on the left side when installing the VF Lens Assy" when installing.

2-1-11. LCD SECTION



Screw

#49: M2.0 X 4.0
(Black)
2-630-005-31



Note

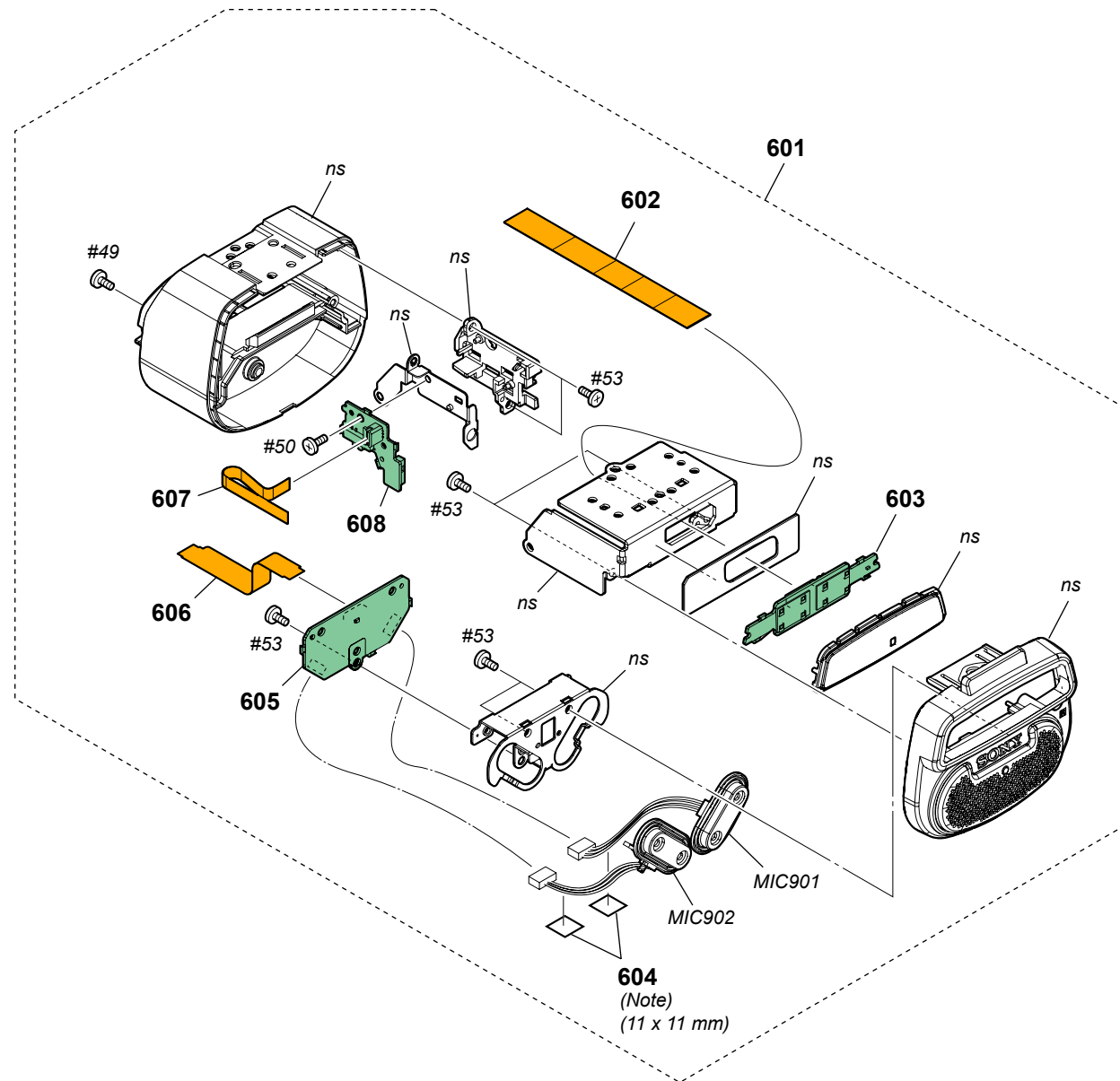
Note 1: Refer to "Assembly-2: How to arrange Harnesses (SW-116)" when installing.

Ref. No.	Part No.	Description
551	A-1990-464-A	PANEL BLOCK ASSY
552	4-460-895-01	COVER (O), HINGE
553	1-963-030-21	HARNESS (SW-116) (Note 1)
554	A-1994-373-A	HT-1002 BOARD, COMPLETE
555	4-460-897-01	HOLDER, HT
556	X-2587-151-2	HINGE (40400) ASSY
557	1-965-937-21	HARNESS (COAXIAL CABLE) (Note 1)
558	4-460-894-01	COVER (U), HINGE
559	1-471-514-11	MAGNET (LM-30FH)
560	4-488-847-01	CABINET (C), P
561	A-1994-372-A	PD-1026 BOARD, COMPLETE
562	4-461-959-01	FRAME, PD

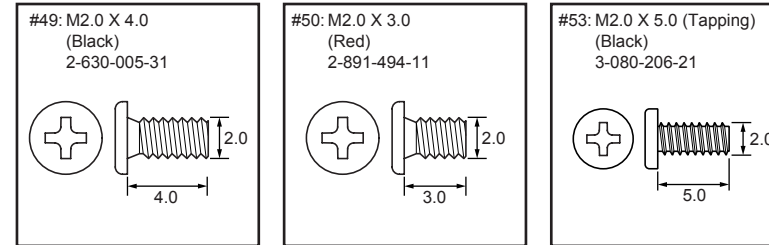
Ref. No.	Part No.	Description
* 563	4-488-846-01	SPACER, LCD
564	4-283-280-11	CUSHION (91000), LCD
565	1-487-270-11	BLOCK, LIGHT GUIDE PLATE (3.5)
566	3-089-986-01	SHEET (L), LIGHT INTERCEPTION
567	X-2588-894-1	CABINET (M) ASSY, P
568	4-460-898-01	GUARD, HARNESS
LCD901	1-811-403-11	LCD WITH TOUCH PANEL
#49	2-630-005-31	SCREW (M2), NEW TRUSTER, P2

2-1-12. MICROPHONE SECTION

ns: not supplied



Screw



Note

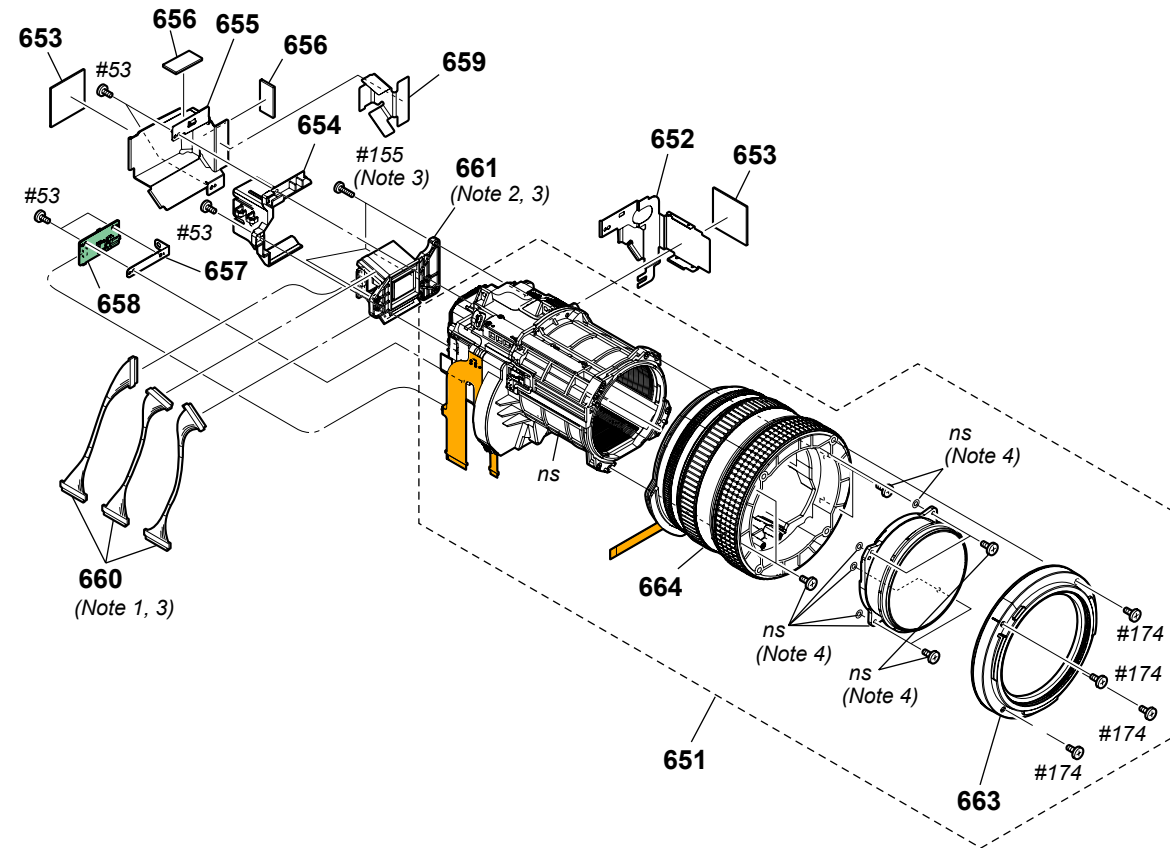
Note: Cut the NON WOVEN (T0.25) (Ref.No.604) for specified size and use it.

Ref. No.	Part No.	Description
601	A-2054-963-A	MICROPHONE BLOCK ASSY
602	1-846-792-11	FLEXIBLE FLAT CABLE (FFC-1047)
603	A-2057-246-A	VL-1001 BOARD, COMPLETE
604	3-076-631-01	NON WOVEN (T0.25) (Note)
605	A-1994-364-A	MA-1008 BOARD, COMPLETE
606	1-876-946-11	FP-975 FLEXIBLE BOARD
607	1-848-048-11	FLEXIBLE FLAT CABLE (FFC-1059)
608	A-2057-247-A	SW-1011 BOARD, COMPLETE

Ref. No.	Part No.	Description
MIC901	1-542-513-21	MICROPHONE
MIC902	1-542-513-21	MICROPHONE
#49	2-630-005-31	SCREW (M2), NEW TRUSTER, P2
#50	2-891-494-11	SCREW (M2), NEW TRUSTER, P2
#53	3-080-206-21	SCREW, TAPPING, P2

2-1-13. LENS SECTION

ns: not supplied



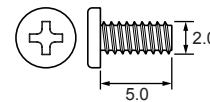
Ref. No.	Part No.	Description
651	1-788-775-61	LENS, VIDEO CF0025
652	4-488-839-01	HEAT SINK, LENS
653	4-119-362-01	SHEET (2828), LENS RADIATION
* 654	4-488-838-01	CLAMP (IM), HARNESS
* 655	4-488-837-01	HEAT SINK (IM)
656	4-119-356-01	SHEET (1122), LENS RADIATION
* 657	4-119-359-01	PLATE, GY GROUND
658	A-2042-264-A	GY-1004 BOARD, COMPLETE (SERVICE)
659	4-488-840-01	SHEET, CM RADIATION
660	1-970-000-11	HARNESS, COAXIAL (Note 1, 3)

Ref. No.	Part No.	Description
661	A-1989-359-A	DEVICE (SERVICE), PRISM (Note 2, 3)
663	4-542-662-01	FRAME (SERVICE), FILTER SCREW
664	4-542-663-01	RING (SERVICE), MANUAL
#53	3-080-206-21	SCREW, TAPPING, P2
#155	3-080-204-31	SCREW, TAPPING, P2 (Note 3)
#174	3-713-791-35	SCREW (M1.7X5), TAPPING, P2

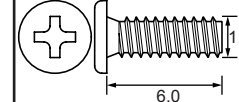
HXR-NX1

Screw

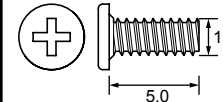
#53: M2.0 X 5.0 (Tapping)
(Black)
3-080-206-21



#155: M1.7 X 6.0 (Tapping)
(Black)
3-080-204-31



#174: M1.7 X 5.0 (Tapping)
(Black)
3-713-791-35

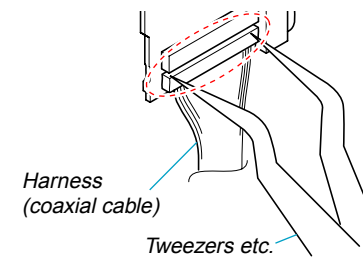


Note

Note 1:

Disconnecting the Harness (Coaxial Cable)

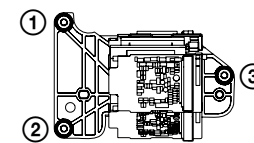
When disconnecting the Harness (Coaxial Cable), do not pull the harness part but pull off the connector body with tweezers etc.



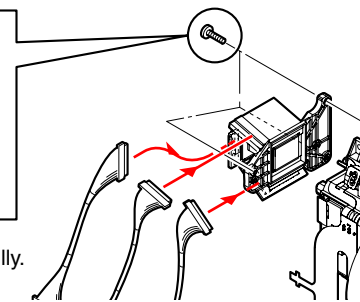
Note 2: Be sure to read "Precautions for Replacement of Imager" on page 6-1 when changing the imager.

Note 3: Prism Device cautions

Tighten screws in the following order.



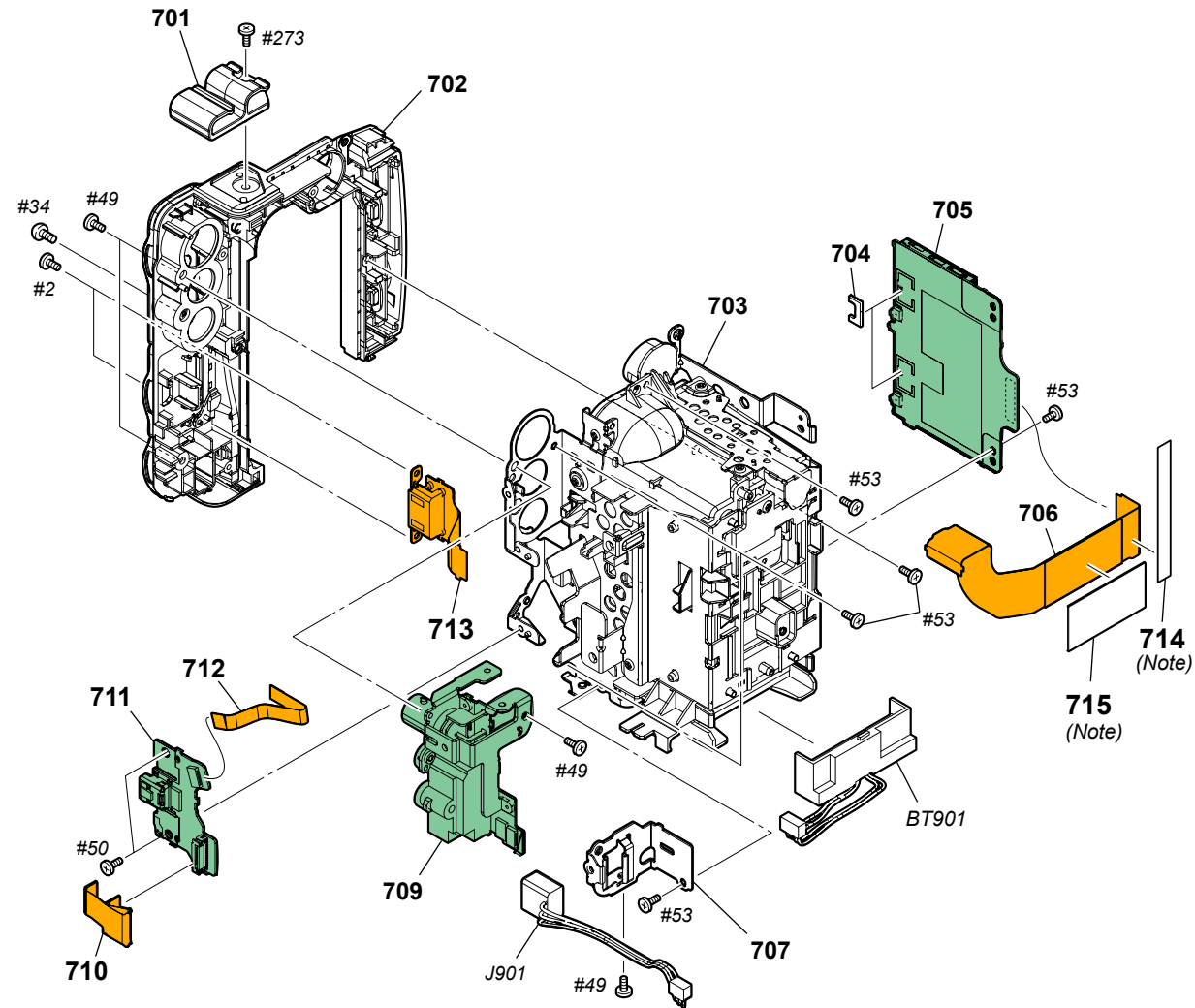
Be sure not to insert the harnesses forcefully.



Note 4: If this parts are disassembled, reassemble them correctly.

- Do not lose the adjustment washer.
- The adjustment washer may not be used.

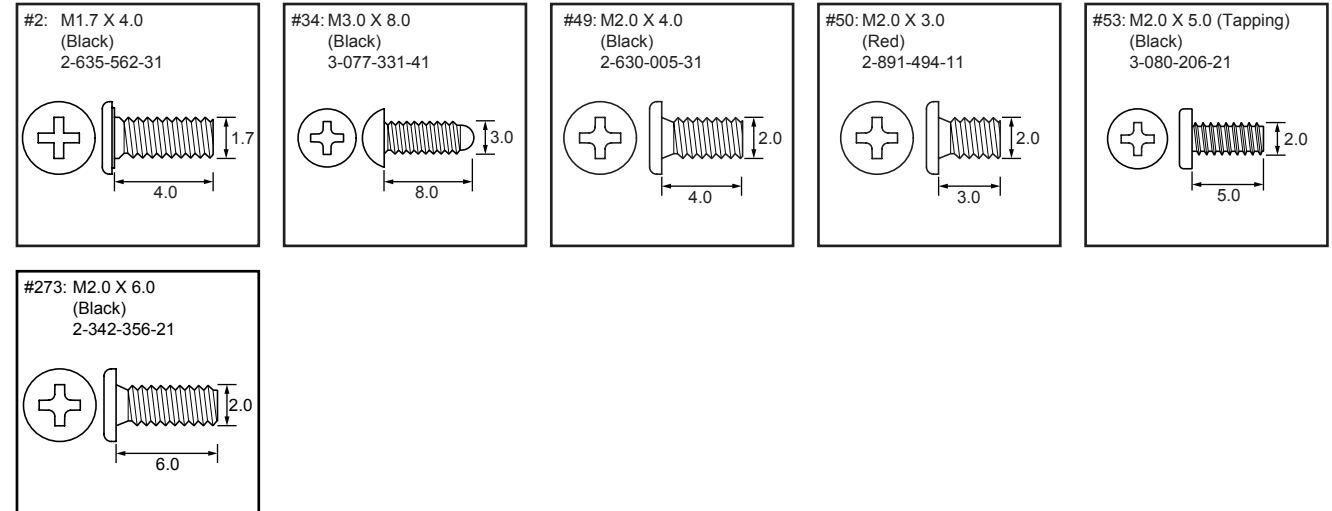
2-1-14. BT PANEL SECTION



Ref. No.	Part No.	Description
* 701	4-488-856-01	CLAMP, DC CABLE
702	X-2588-895-1	PANEL (93600) ASSY, BT
703	X-2588-896-1	HOLDER ASSY, BT
704	4-165-226-01	SHEET, MS LIGHT INTERCEPTION
705	A-1994-369-A	MS-1019 BOARD, COMPLETE
706	1-889-007-11	FP-2173 FLEXIBLE BOARD
* 707	4-165-378-01	HOLDER, DC
709	A-2015-618-A	CP-1002 BOARD, COMPLETE (SERVICE)
710	1-879-883-11	FP-1162 FLEXIBLE BOARD
711	A-1994-370-A	JK-1008 BOARD, COMPLETE
712	1-837-240-11	FLEXIBLE FLAT CABLE (FFC-194)
713	A-1752-133-A	FP-1149 FLEXIBLE BOARD, COMPLETE

Ref. No.	Part No.	Description
714	4-527-211-01	SHEET (FP2173), COUNTERMEASURE (Note)
715	4-531-811-01	SPACER (FP2173), COUNTERMEASURE (Note)
△ BT901	1-694-411-31	TERMINAL BOARD, BATTERY
△ J901	1-785-247-31	CONNECTOR, DC-IN
#2	2-635-562-31	SCREW (M1.7)
#34	3-077-331-41	+BV3 (3-CR)
#49	2-630-005-31	SCREW (M2), NEW TRUSTER, P2
#50	2-891-494-11	SCREW (M2), NEW TRUSTER, P2
#53	3-080-206-21	SCREW, TAPPING, P2
#273	2-342-356-21	SCREW (M2 (ECO, EG))

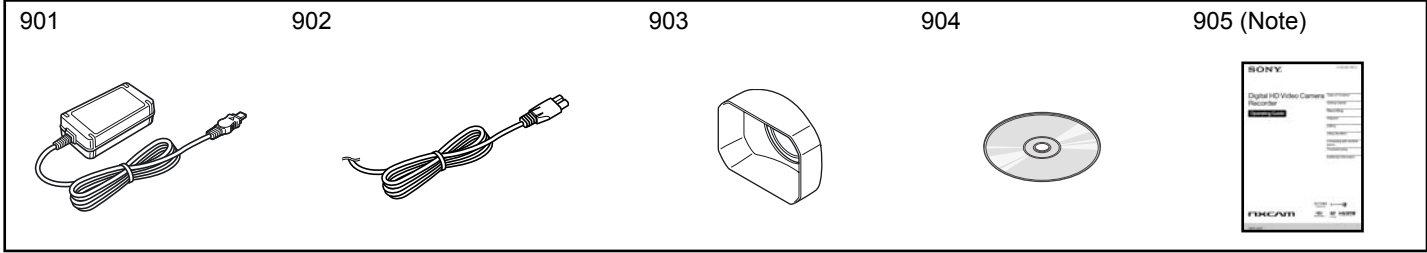
Screw



Note

Note: Do not reuse these Parts because their adhesive force decreases when they are removed once.

ACCESSORIES



Ref. No.	Part No.	Description
△ 901	1-479-286-62	AC Adaptor (AC-L100C)
△ 902	1-846-102-41	Power cord (mains lead) (EXCEPT IND)
△ 902	1-848-066-31	Power cord (mains lead) (IND)
903	X-2320-850-1	Lens hood with lens cover
904	4-543-695-11	CD-ROM "Manuals for Digital HD Video Camera Recorder"
* 905	4-543-697-11	Operating Guide (ENGLISH) (Note)

(Note)

The CD-ROM supplied contains of the Operating Instructions (PDF) for printing.

- The printed Operating Guide is not supplied. If required, please order it with the part number above.