

SONY[®]

SOLID-STATE MEMORY CAMCORDER

PMW-300

XDCM[™]

SXS

HDMI

MPEG HD422

Exmor

i

SERVICE MANUAL

1st Edition

Section 5

Spare Parts

5-1. Note on Repair Parts

1. Safety Related Components Warning

WARNING

Components marked △ are critical to safe operation. Therefore, specified parts should be used in the case of replacement.

2. Standardization of Parts

Some repair parts supplied by Sony differ from those used for the unit. These are because of parts commonality and improvement.

3. Stock of Parts

Parts marked with “o” at SP (Supply Code) column of the spare parts list may not be stocked. Therefore, the delivery date will be delayed.

4. Harness

Harnesses with no part number are not registered as spare parts.

1. 安全重要部品

△警告

△印のついた部品は安全性を維持するために重要な部品です。したがって、交換する時は必ず指定の部品を使ってください。

2. 部品の共通化

ソニーから供給する補修用部品は、セットに使われているものと異なることがあります。これは部品の共通化、改良等によるものです。

3. 部品の在庫

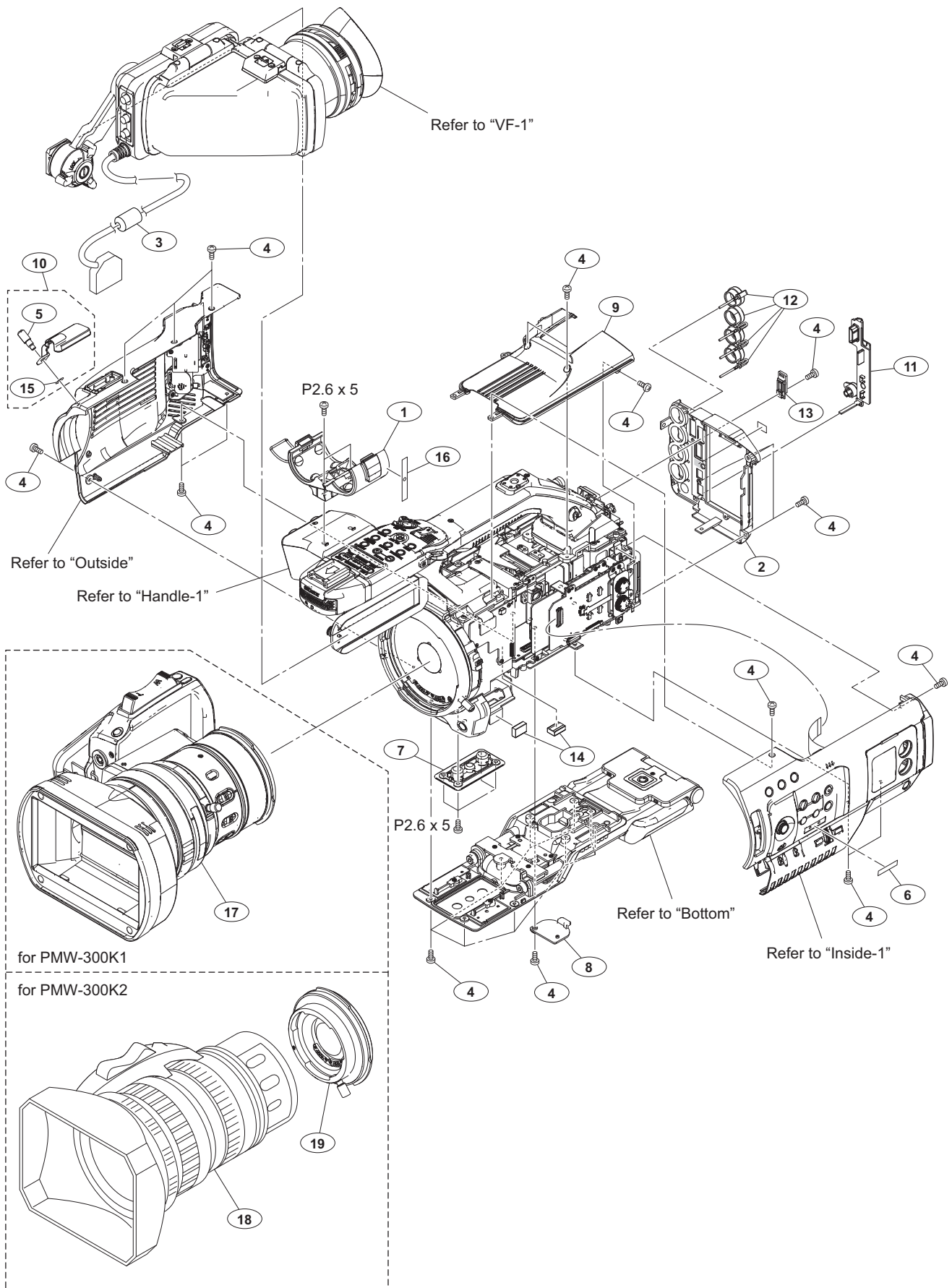
部品表の SP (Supply code) 欄に “o” で示される部品は在庫していないことがあります。納期が長くなる場合があります。

4. ハーネス

部品番号の記載されていないハーネスは、サービス部品として登録されていません。

5-2. Exploded Views

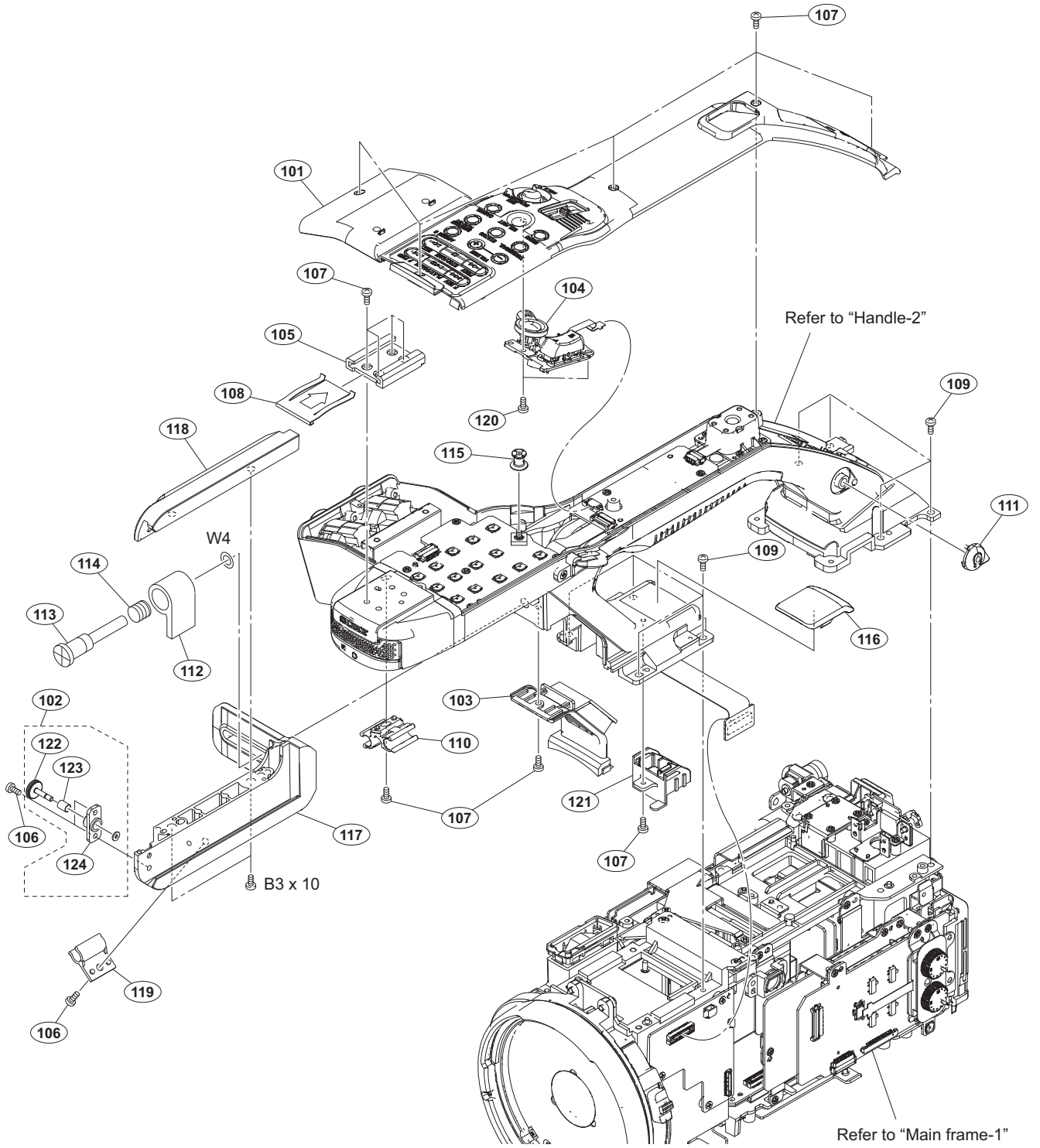
Overall



Overall

No.	Part No.	SP Description
1	X-2342-570-5	s HOLDER (93000) ASSY,MICROPHONE
2	X-2588-256-1	s PANEL ASSY, REAR
3	1-543-798-11	s FILTER, CLAMP (FERRITE CORE)
4	3-080-203-41	s SCREW(M2), LOCK ACE, P2 [P2X5] [Black]
5	3-678-629-04	s LEVER, MOUNT
6	3-870-012-02	s LABEL (HD1500), XDCAM
7	4-119-234-11	s WASHER, TRIPOD
8	4-427-934-02	s BATTERY LID
9	4-476-439-01	s PANEL, TOP
10	A-1991-188-A	s COVER ASSY, VF
11	4-477-896-01	s COVER (A), IO
12	4-477-897-01	s COVER (B), IO
13	4-477-898-01	s COVER, USB
14	4-477-930-01	s GASKET, SHAFT
15	3-669-596-01	s WASHER (2.3), STOPPER
16	4-528-275-01	s SHEET, MIC HOLDER
17	1-788-858-31	s LENS, ZOOM (VCL-614B2X) [PMW-300K1]
18	1-856-135-41	s 1/2INCH, ZOOMLENS [PMW-300K2]
19	1-788-852-12	s ADAPTOR, LENS (LO-3830) [PMW-300K2]
	7-627-556-58	s SCREW +P 2.6X5

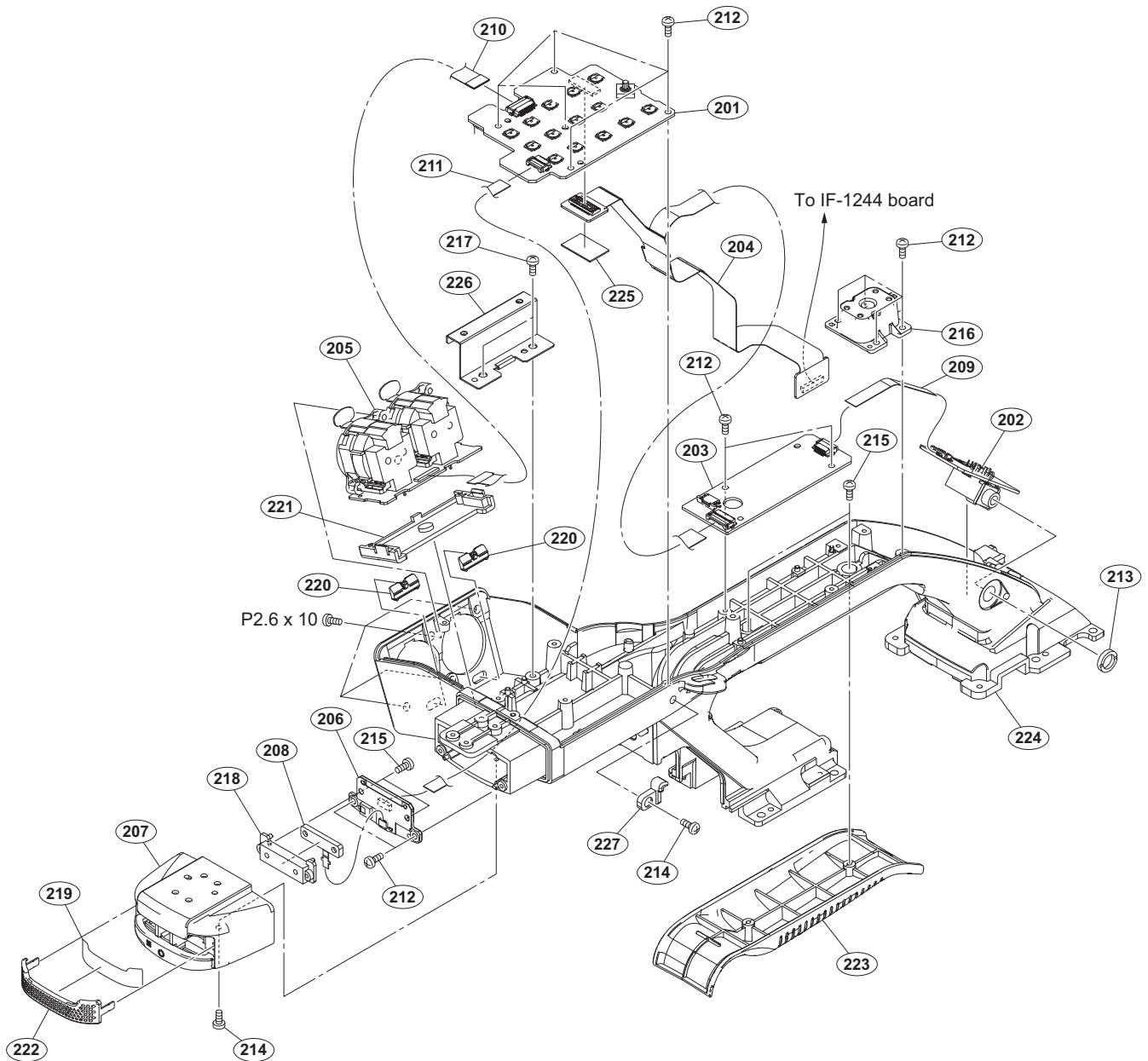
Handle-1



Handle-1

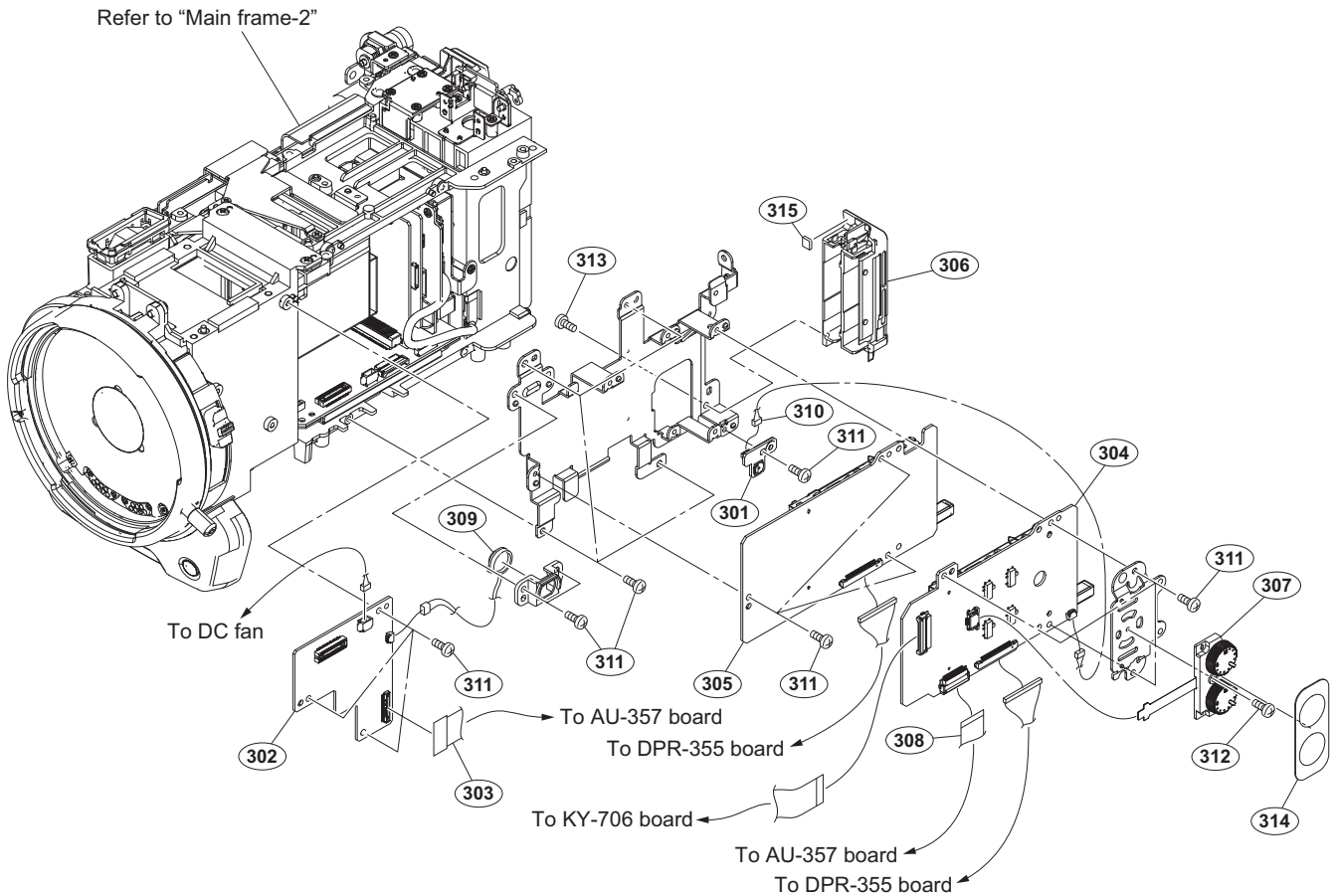
No.	Part No.	SP Description
101	X-2588-272-1	s U-CASE ASSY, HANDLE
102	X-2588-277-1	s STOPPER ASSY, VF
103	X-2588-278-1	s F-CASE ASSY, HANDLE
104	1-480-298-11	s SWITCH BLOCK, CONTROL (GZ92000)
105	3-069-286-03	s SHOE, ACCESSORY
106	3-080-203-31	s SCREW (M2), LOCK ACE, P2 [P2X4]
107	3-080-203-41	s SCREW(M2), LOCK ACE, P2 [P2X5]
108	3-288-615-02	s SPRING, SHOE
109	3-637-901-11	s SCREW M2.6X5
110	3-870-272-02	s CLAMP, CABLE
111	4-428-161-01	s COVER, HP JACK
112	4-458-121-01	s LEVER, INSIDE
113	4-458-123-01	s SCREW, ROD LOCK
114	4-458-124-01	s SPRING, ROD LOCK
115	4-478-720-01	s KNOB, JS
116	4-487-219-01	s PARASOL, DUCT LOUVER
117	4-479-736-01	s RAIL (A), VF
118	4-479-737-01	s RAIL (B), VF
119	4-487-001-01	s HOLDER (L), CABLE
120	3-056-233-21	s SCREW (M2), LOCK ACE, P2 [P2X4]
121	4-487-220-01	s BASE, DUCT LOUVER
122	2-277-457-11	s KNOB, STOPPER
123	2-277-466-11	s SPRING, COMPRESSION
124	3-710-008-11	s HOUSING, STOPPER
	7-682-549-09	s SCREW +B 3X10
	7-688-004-12	s W 4, MIDDLE

Handle-2



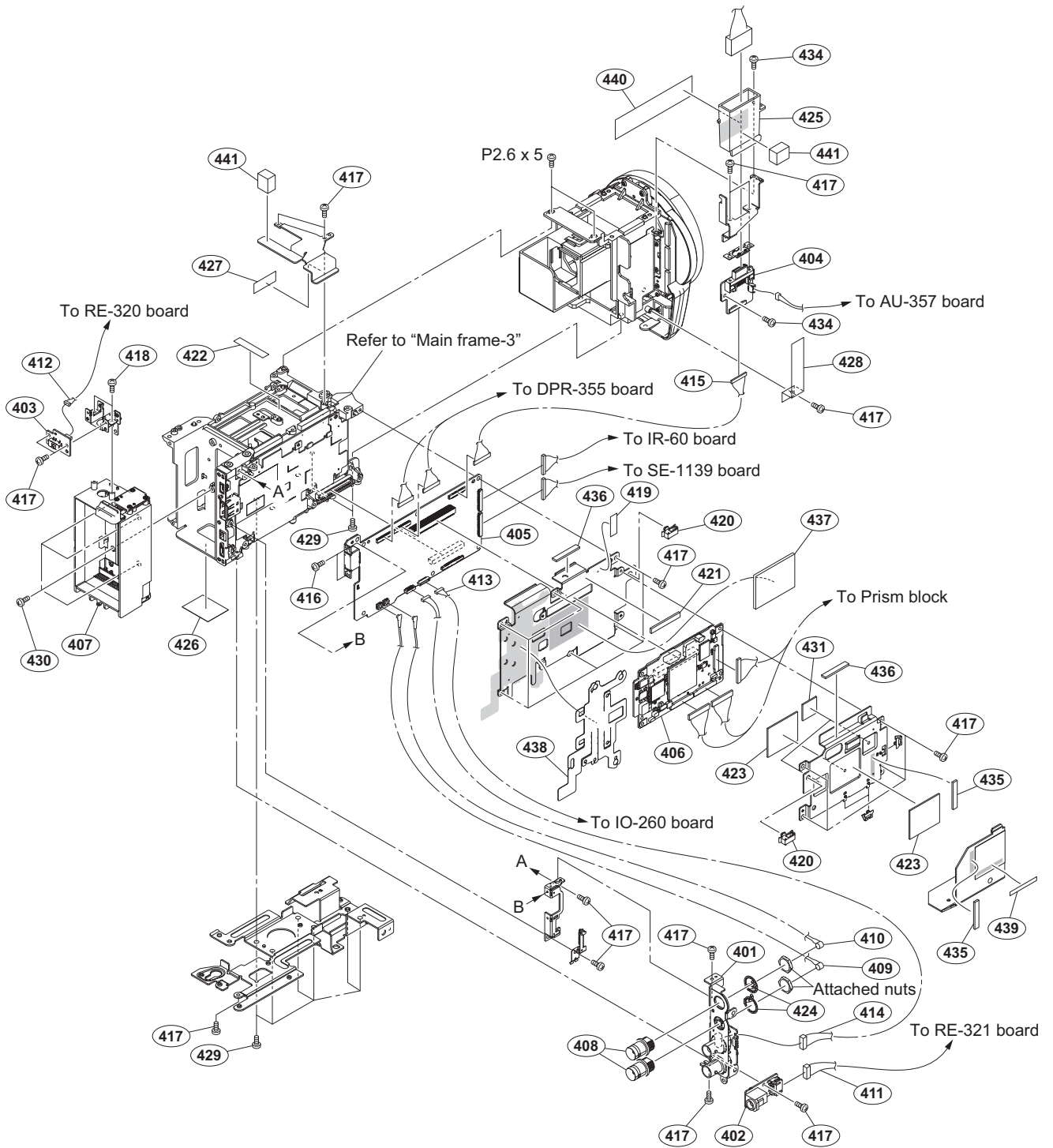
No.	Part No.	SP Description	No.	Part No.	SP Description
201	A-1968-683-A	s MOUNTED CIRCUIT BOARD, KSW-65	218	4-428-154-01	s CASE, MICROPHON
202	A-1968-688-A	s MOUNTED CIRCUIT BOARD, RM-241	219	4-428-159-01	s SCREEN, WIND
203	A-1968-691-A	s MOUNTED CIRCUIT BOARD, HN-411	220	4-428-163-04	s XLR SW KNOB
204	A-1968-717-A	s MOUNTED CIRCUIT BOARD, HN-413	221	4-428-164-01	s XLR SW RALL
205	A-1968-732-A	s MOUNTED CIRCUIT BOARD, AXM-50	222	4-476-900-01	s GRIL, MICROPHONE
206	A-1968-734-A	s MOUNTED CIRCUIT BOARD, FP-189	223	4-478-718-01	s GRIP COVER, HANDLE
207	X-2588-178-1	Y HOLDER, ASSY MICROPHONE	224	4-478-719-01	s HANDLE
208	1-542-862-11	s MICROPHONE UNIT	225	4-478-807-01	s CUSHION, CONNECTOR
209	1-831-072-11	s CABLE, FLEXIBLE FLAT (10 CORE)	226	4-480-308-01	s BRACKET, MICROPHONE
210	1-831-666-11	s CABLE, FLEXIBLE FLAT (15 CORE)	227	4-484-980-01	s PROTECTOR, HANDLE
211	1-846-023-11	s CABLE, FLEXIBLE FLAT (10 CORE)			
212	3-056-233-21	s SCREW (M2), LOCK ACE, P2 [P2X4]			
213	3-061-234-01	s NUT (M6X0.5)		7-685-135-19	s SCREW +P 2.6X10 TYPE2 NON-SLIT
214	3-080-203-41	s SCREW (M2), LOCK ACE, P2 [P2X5] [Black]			
215	3-080-206-21	s SCREW, TAPPING, P2 [P2X5] [Black]			
216	3-288-538-11	s SHOE, REAR (COLD)			
217	3-637-901-11	s SCREW M2.6X5			

Main Frame-1



No.	Part No.	SP Description
301	A-1968-694-A s	MOUNTED CIRCUIT BOARD, SW-1612
302	A-1968-715-A s	MOUNTED CIRCUIT BOARD, IF-1244
303	A-1968-716-A s	MOUNTED CIRCUIT BOARD, HN-412
304	A-1968-727-A s	MOUNTED CIRCUIT BOARD, SWC-56
305	A-1968-731-A s	MOUNTED CIRCUIT BOARD, EC-78
306	X-2588-273-1 s	ESCUTCHEON ASSY, SXS
307	1-480-457-41 s	BLOCK, AU VOLUME
308	1-846-286-11 s	CABLE, FLEXIBLE FLAT (20 CORE)
309	1-858-462-11 s	LOUDSPEAKER (1.0CM)
310	1-967-191-11 s	HARNESS (LED)
311	3-056-233-21 s	SCREW (M2), LOCK ACE, P2 [P2X4]
312	3-080-203-41 s	SCREW (M2), LOCK ACE, P2 [P2X5] [Black]
313	3-080-206-21 s	SCREW, TAPPING, P2 [TPT2X5] [Black]
314	4-428-985-01 s	COVER, AU VOLUME
315	4-487-222-01 s	CUSHION (SXS ESCUTCHEON)

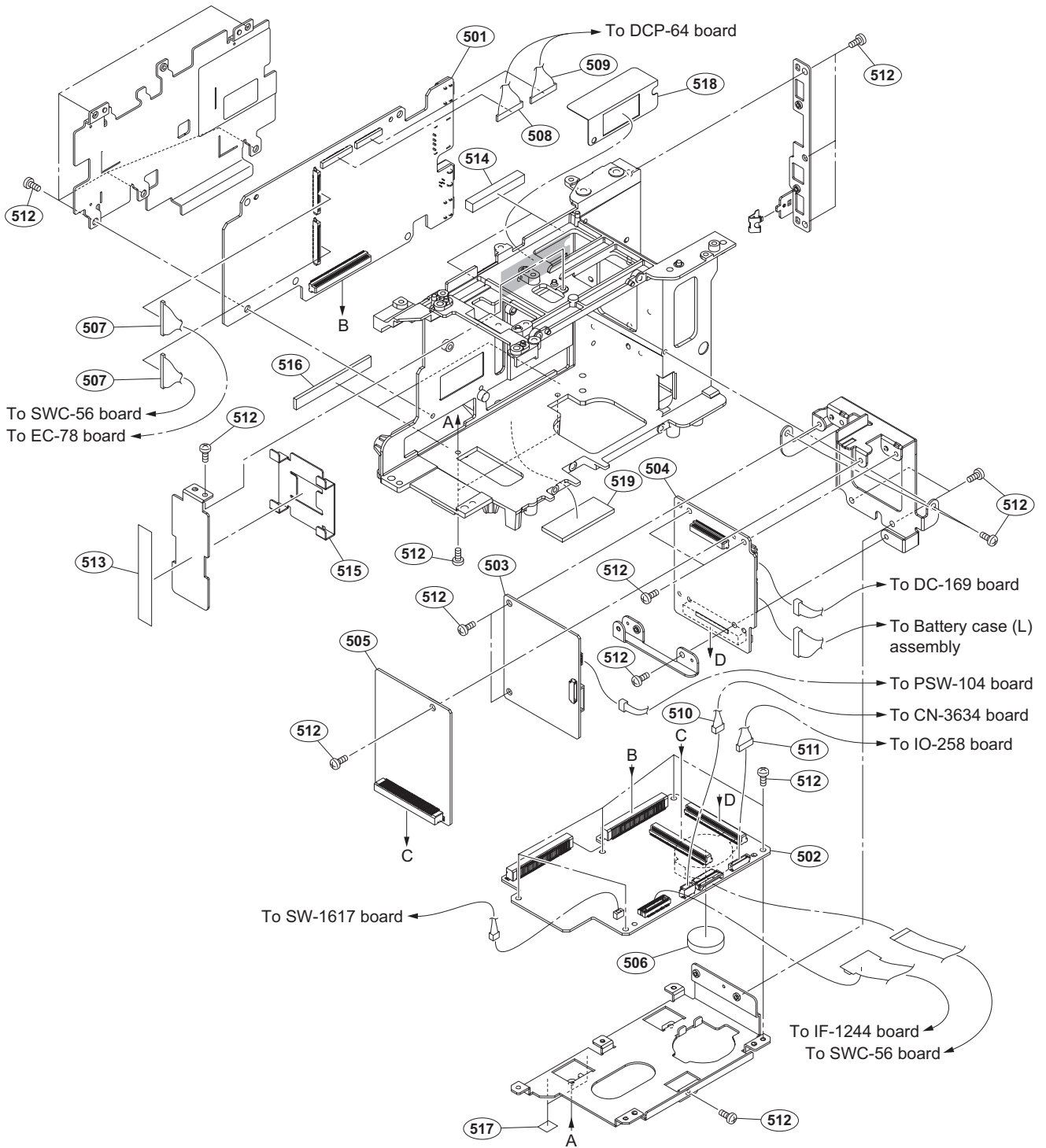
Main Frame-2



Main Frame-2

No.	Part No.	SP Description
401	A-1968-686-A	s MOUNTED CIRCUIT BOARD, IO-259
402	A-1968-692-A	s MOUNTED CIRCUIT BOARD, DC-169
403	A-1968-693-A	s MOUNTED CIRCUIT BOARD, PSW-104
404	A-1968-728-A	s MOUNTED CIRCUIT BOARD, CN-3634
405	A-1968-738-A	s MOUNTED CIRCUIT BOARD, DCP-64
406	A-1970-136-A	s MOUNTED CIRCUIT BOARD, VPR-124
407	A-1977-144-A	s CASE (L) (SUB ASSY), BATTERY
408	1-784-240-11	s CONVERTER, COAXIAL CONNECTOR
409	1-757-641-11	o CABLE ASSEMBLY, COAXIAL
410	1-839-550-11	s CABLE ASSEMBLY, COAXIAL
411	1-968-344-41	s SUB HARNESS (EXT DC-RE299)
412	1-968-345-11	s SUB HARNESS (PSW-RE298)
413	1-969-764-11	s SUB HARNESS (AV)
414	1-969-765-11	s SUB HARNESS (TC)
415	1-969-769-11	s HARNESS (LCDVF_XL)
416	2-635-562-31	s SCREW (M1.7) [P1.7X4]
417	3-056-233-21	s SCREW (M2), LOCK ACE, P2 [P2X4]
418	3-080-206-21	s SCREW, TAPPING, P2 [P2X5]
419	3-278-255-01	s TAPE (BT)
420	4-098-036-01	s SADDLE WIRE (A)
421	4-427-949-02	s RADIATION SHEET A
422	4-427-952-02	s RADIATION SHEET D
423	4-427-953-02	s RADIATION SHEET E
424	4-428-368-01	s WASHER, BNC COAXIAL FIXED
425	4-476-918-01	s COVER, VF INSERT
426	4-479-191-01	s SHEET, BOTTOM REAR
427	4-480-707-01	s RADIATION SHEET 15X24X1
428	4-480-727-01	s COVER, FRONT HARNESS
429	3-637-901-11	s SCREW M2.6X5
430	3-080-203-41	s SCREW (M2), LOCK ACE, P2 [P2X5]
431	4-427-951-02	s RADIATION SHEET C
434	3-080-203-41	s SCREW (M2), LOCK ACE, P2 [P2X5] [Black]
435	4-427-942-01	s GASKET MAIN A
436	4-428-812-01	s GASKET (D), MAIN
437	4-462-217-02	s SHEET (H), RADIATION
438	4-486-970-01	s SHEET, HARNESS GUIDE
439	4-487-770-02	s SHEET (10X30X1), RADIATION
440	4-489-170-01	s TAPE, VF HOLDER CONDUCTIVE
441	4-527-121-01	s GASKET (10X12X12)
	7-627-556-58	s SCREW +P 2.6X5

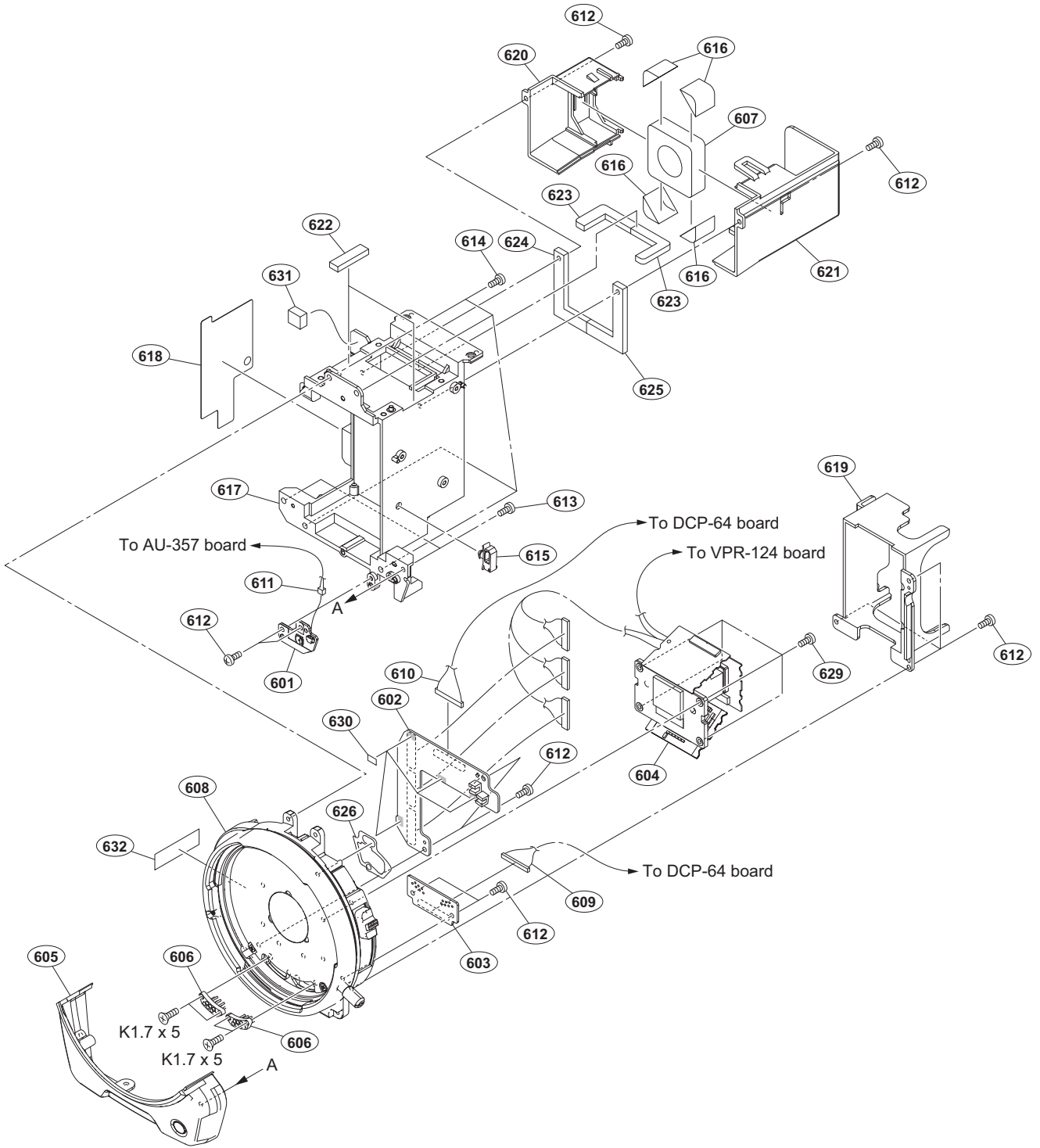
Main Frame-3



No.	Part No.	SP Description
501	A-1968-739-A	s MOUNTED CIRCUIT BOARD, DPR-355
502	A-1968-740-A	s MOUNTED CIRCUIT BOARD, AU-357
503	A-1968-741-A	s MOUNTED CIRCUIT BOARD, RE-320
504	A-1968-742-A	s MOUNTED CIRCUIT BOARD, RE-321
505	A-1968-743-A	s MOUNTED CIRCUIT BOARD, RE-322
506	△ 1-528-174-33	s BATTERY, LITHIUM (CR2032 TYPE)
507	1-968-346-11	s HARNESS (DPR-EC/SWC)
508	1-969-762-11	s HARNESS (DCP-DPR 40)
509	1-969-763-11	s HARNESS (DCP-DPR 32)
510	1-969-768-11	s SUB HARNESS (UNREG-VF)
511	1-969-773-11	s SUB HARNESS (RM)

No.	Part No.	SP Description
512	3-056-233-21	s SCREW (M2), LOCK ACE, P2 [P2X4]
513	4-427-939-02	s CONDUCTIVE TAPE (EC)
514	4-427-942-01	s GASKET MAIN A
515	4-427-947-01	s HOLDER EC HARNESS B
516	4-427-949-02	s RADIATION SHEET A
517	4-480-733-01	s GASKET 5X7X1
518	4-487-025-01	s SHEET (U), HARNESS GUIDE
519	4-480-706-01	s RADIATION SHEET 14X35X3

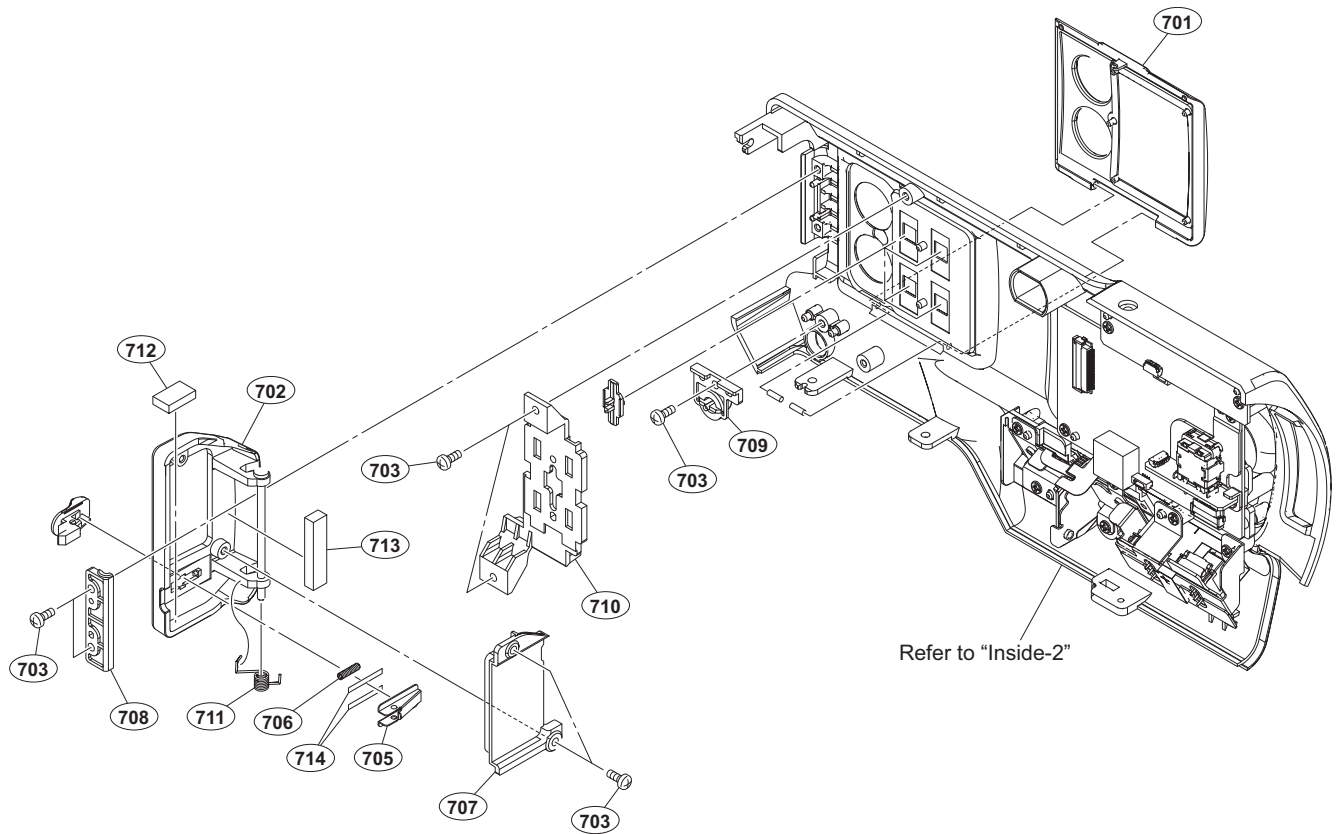
Front



Front

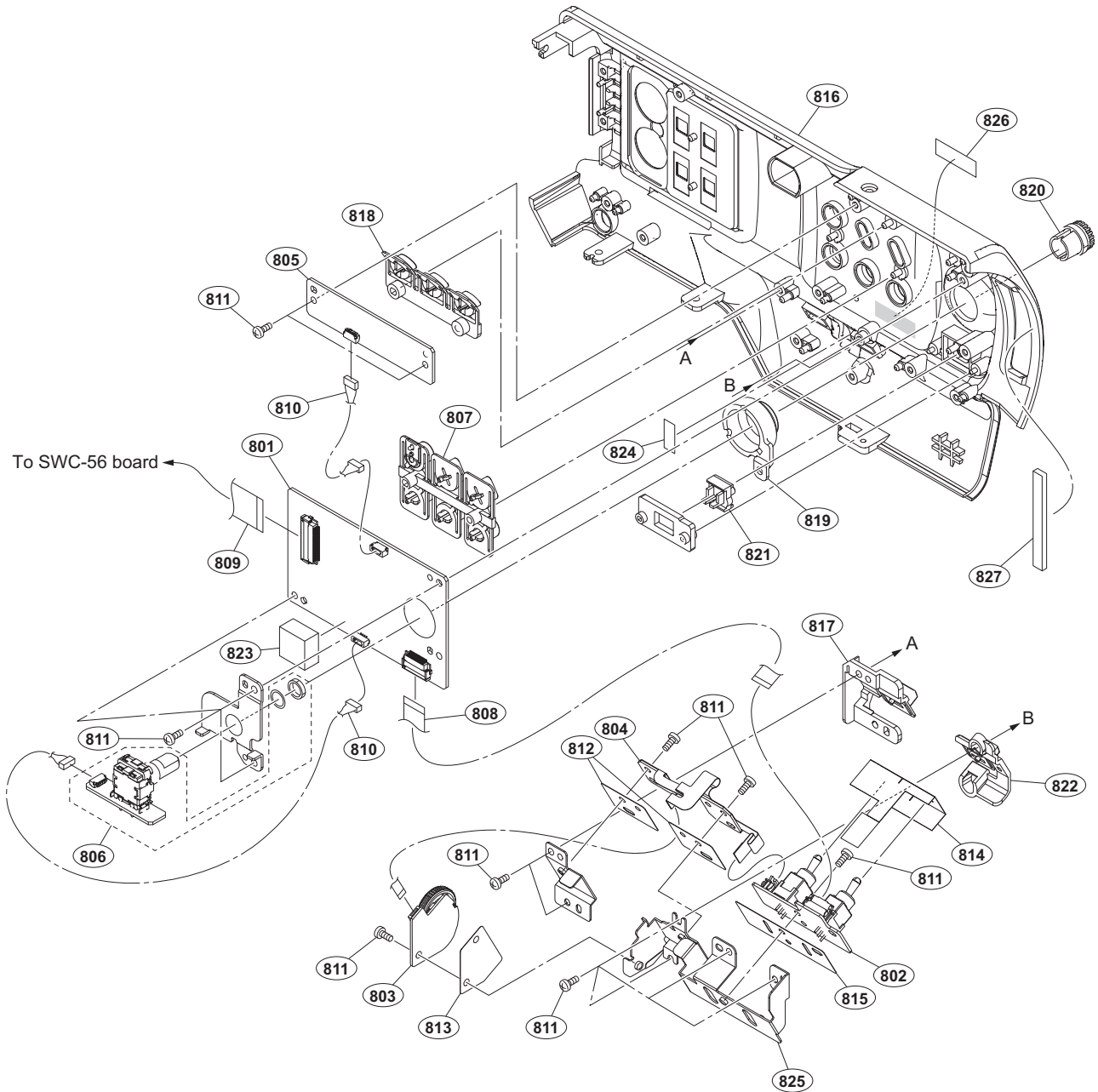
No.	Part No.	SP Description
601	A-1968-685-A	s MOUNTED CIRCUIT BOARD, SW-1617
602	A-1968-719-A	s MOUNTED CIRCUIT BOARD, SE-1139
603	A-1968-735-A	s MOUNTED CIRCUIT BOARD, IR-60
604	A-1970-744-A	Y PRISM BLOCK ASSY
605	X-2588-182-1	s PANEL, ASSY FRONT SWITCH
606	1-565-901-21	s CONNECTOR, MOUNT (C)
607	△ 1-855-292-11	s FAN, DC (30 SQUARE)
608	1-856-601-11	s MOUNT, LENS
609	1-969-766-11	s SUB HARNESS (IR-DCP)
610	1-969-767-11	s SUB HARNESS (SE-DCP)
611	1-969-771-11	s SUB HARNESS (KY-SW_17)
612	3-056-233-21	s SCREW (M2), LOCK ACE, P2 [P2X4]
613	3-080-206-21	s SCREW, TAPPING, P2 [P2X5]
614	3-637-901-11	s SCREW M2.6X5
615	4-098-036-01	s SADDLE WIRE (A)
616	4-458-849-01	s FAN HOLDER
617	4-476-855-01	s FRAME, FRONT
618	4-476-858-01	s SHEET, CMOS HARNESS GUIDE
619	4-476-913-01	s HOLDER, CMOS HARNESS
620	4-476-914-01	s DUCT (MAIN A)
621	4-476-915-01	s DUCT (MAIN B)
622	4-479-408-01	s CUSHION, HANDLE
623	4-479-409-01	s CUSHION, DUCT
624	4-480-728-01	s CUSHION, FRONT DUCT
625	4-486-717-01	s CUSHION (B), FRONT DUCT
626	4-487-936-01	s SHEET, FILTER
629	3-080-203-41	s SCREW(M2), LOCK ACE, P2 [P2X5] [Black]
630	4-487-625-01	s TAPE (5X8)
631	4-459-282-71	s GASKET (10X7)
632	4-527-120-01	s CONDUCTIVE TAPE (10X17)
	7-621-450-98	s SCREW, PRECISION +K 1.7X5 TYPE1

Inside-1



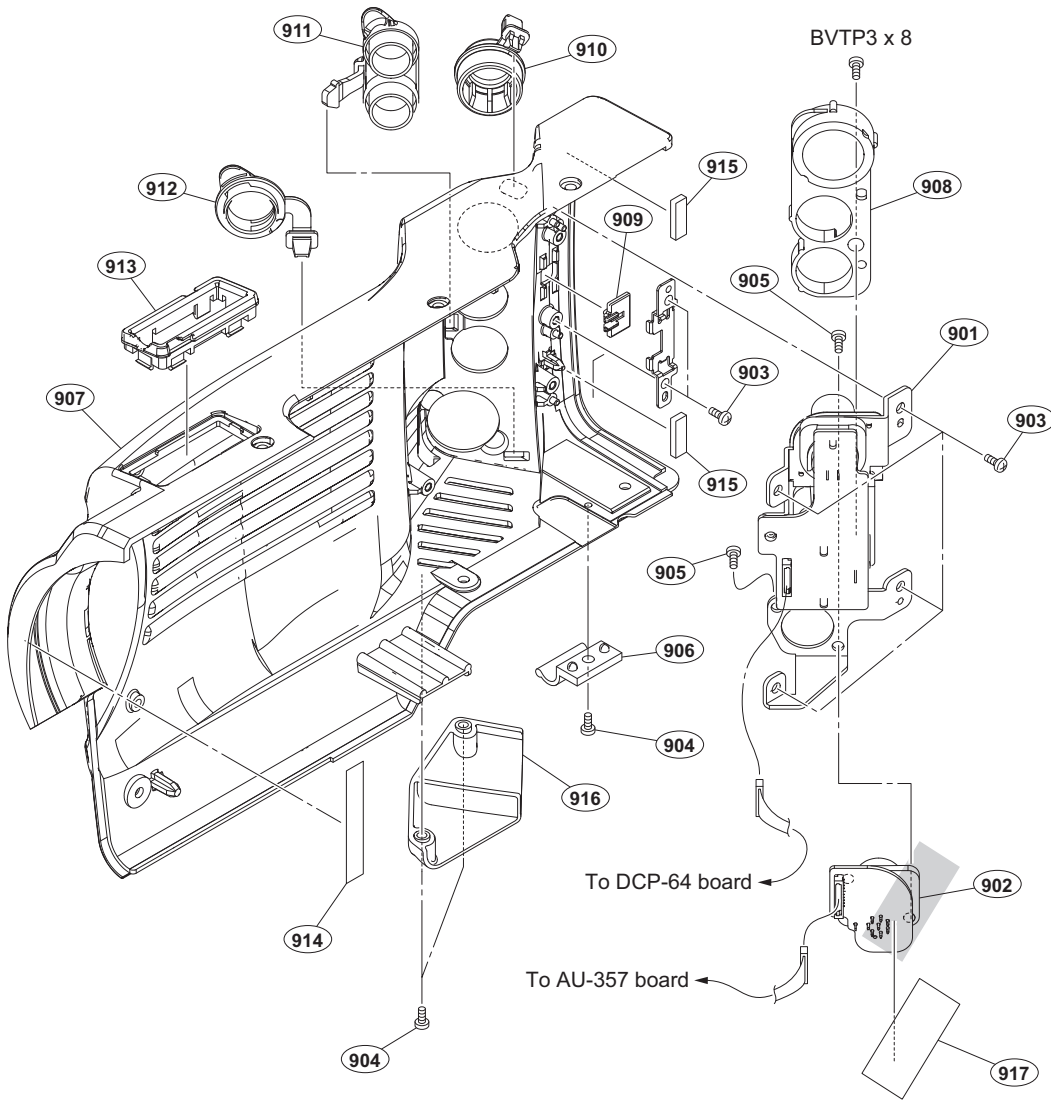
No.	Part No.	SP Description
701	X-2588-171-1 s	AU COVER ASSY
702	X-2588-306-1 s	SXS COVER, SUB ASSY
703	3-056-233-21 s	SCREW (M2), LOCK ACE, P2 [P2X4]
705	4-428-320-01 s	HOLDER, SXS LOCK
706	4-428-799-11 s	SPRING, COMPRESSION (1.8),
707	4-476-590-01 s	WINDOW, SXS COVER
708	4-476-591-01 s	HOLDER (SXS COVER)
709	4-476-594-01 s	BUTTON (SLOT)
710	4-476-602-01 s	HOLDER (AU)
711	4-476-603-01 s	SXS SPRING
712	4-476-606-01 s	CUSHION A (SXS COVER)
713	4-476-607-01 s	CUSHION B (SXS COVER)
714	4-486-291-01 s	SHEET (SXS KNOB)

Inside-2



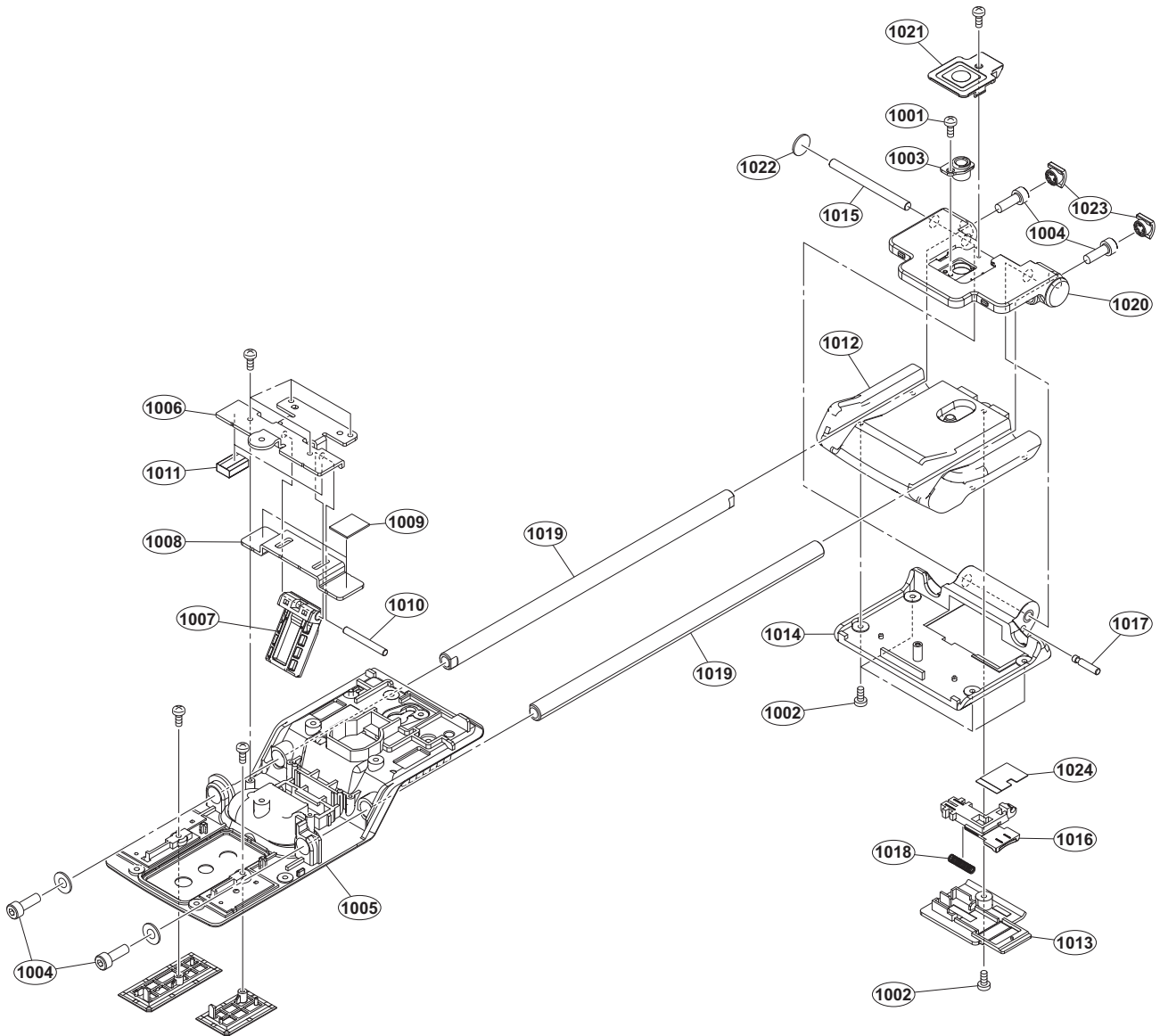
No.	Part No.	SP Description	No.	Part No.	SP Description
801	A-1968-684-A	s MOUNTED CIRCUIT BOARD, KY-706	819	4-476-595-01	s LIGHT (ENCODER), GUIDE,
802	A-1968-689-A	s MOUNTED CIRCUIT BOARD, SW-1610	820	4-476-597-01	s FRAME (ENCODER), TOP
803	A-1968-690-A	s MOUNTED CIRCUIT BOARD, SW-1611			
804	A-1968-718-A	s MOUNTED CIRCUIT BOARD, SW-1613	821	4-476-598-01	s SWITCH (SHUTTER)
805	A-1968-729-A	s MOUNTED CIRCUIT BOARD, SW-1616	822	4-476-600-01	s BUTTON (MENU)
			823	4-476-609-01	s CUSHION (HN412)
806	A-1968-730-A	s MOUNTED CIRCUIT BOARD, EN-164	824	4-488-949-01	s SW COVER (L)
807	X-2588-307-1	s BUTTON (MAIN) ASSY	825	X-2584-460-1	s BRACKET (A) ASSY, SWITCH
808	1-831-666-11	s CABLE, FLEXIBLE FLAT (15 CORE)			
809	1-837-554-11	s CABLE, FLEXIBLE FLAT (26 CORE)	826	3-870-012-02	s LABEL (HD1500), HDCAM
810	1-969-770-11	s SUB HARNESS (KY4P50)	827	4-527-123-01	s GASKET (INSIDE)
811	3-056-233-21	s SCREW (M2), LOCK ACE, P2 [P2X4]			
812	4-428-410-01	s SW INSULATING SHEET B			
813	4-428-411-01	s SW INSULATING SHEET C			
814	4-446-018-11	s SHEET (H), SW CONDUCTIVITY			
815	4-446-019-11	s INSULATING SHEET (H), SW			
816	4-476-585-01	s PANEL, INSIDE			
817	4-476-592-01	s BUTTON (CANCEL)			
818	4-476-593-01	s BUTTON (LENS)			

Outside



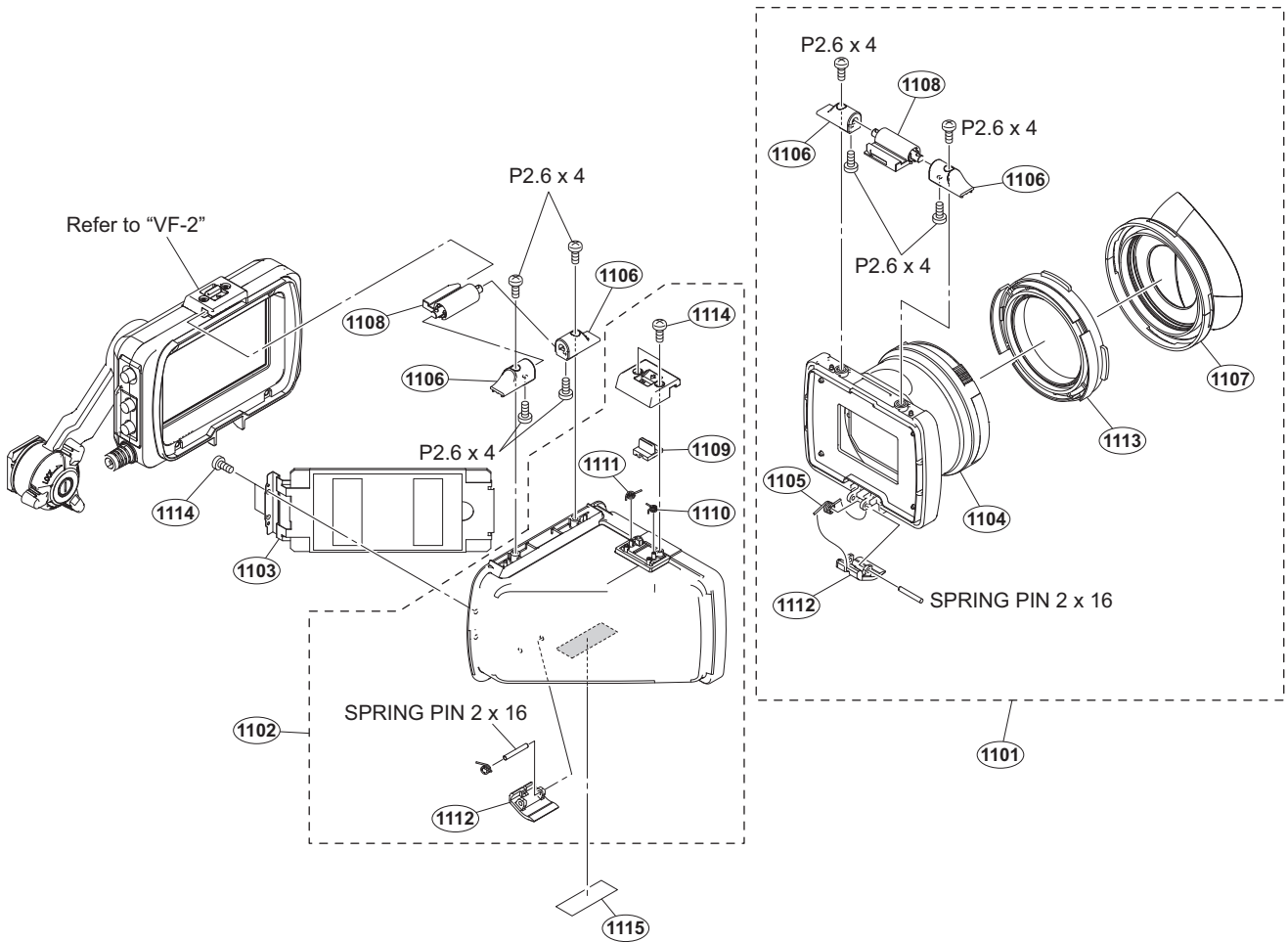
No.	Part No.	SP Description
901	A-1968-687-A	s MOUNTED CIRCUIT BOARD, IO-260
902	A-1969-552-A	s MOUNTED CIRCUIT BOARD, IO-258
903	3-056-233-21	s SCREW (M2), LOCK ACE, P2 [P2X4]
904	3-080-203-41	s SCREW (M2), LOCK ACE, P2 [P2X5]
905	3-637-901-11	s SCREW M2.6X5
906	3-678-684-01	o HOLDER, CABLE
907	4-476-423-01	s PANEL, OUT SIDE
908	4-476-425-01	s HOLDER, VIDEO CONNECTOR
909	4-476-428-01	s SLIDE (SW), IO SELECT
910	4-476-429-01	s VIDEO COVER
911	4-476-430-01	s AUDIO COVER
912	4-476-431-02	s REMOTE COVER
913	4-477-443-01	s VF COVER HOLDER
914	4-480-708-01	s GUSKET 40X5X0.5
915	4-433-494-01	s GASKET (F), MAIN
916	4-486-265-01	s COVER (OUTSIDE), VENTILATOR
917	4-414-598-01	s TAPE (12X35)
	7-685-646-19	s SCREW +BVTP 3X8 TYPE2 N-S

Bottom

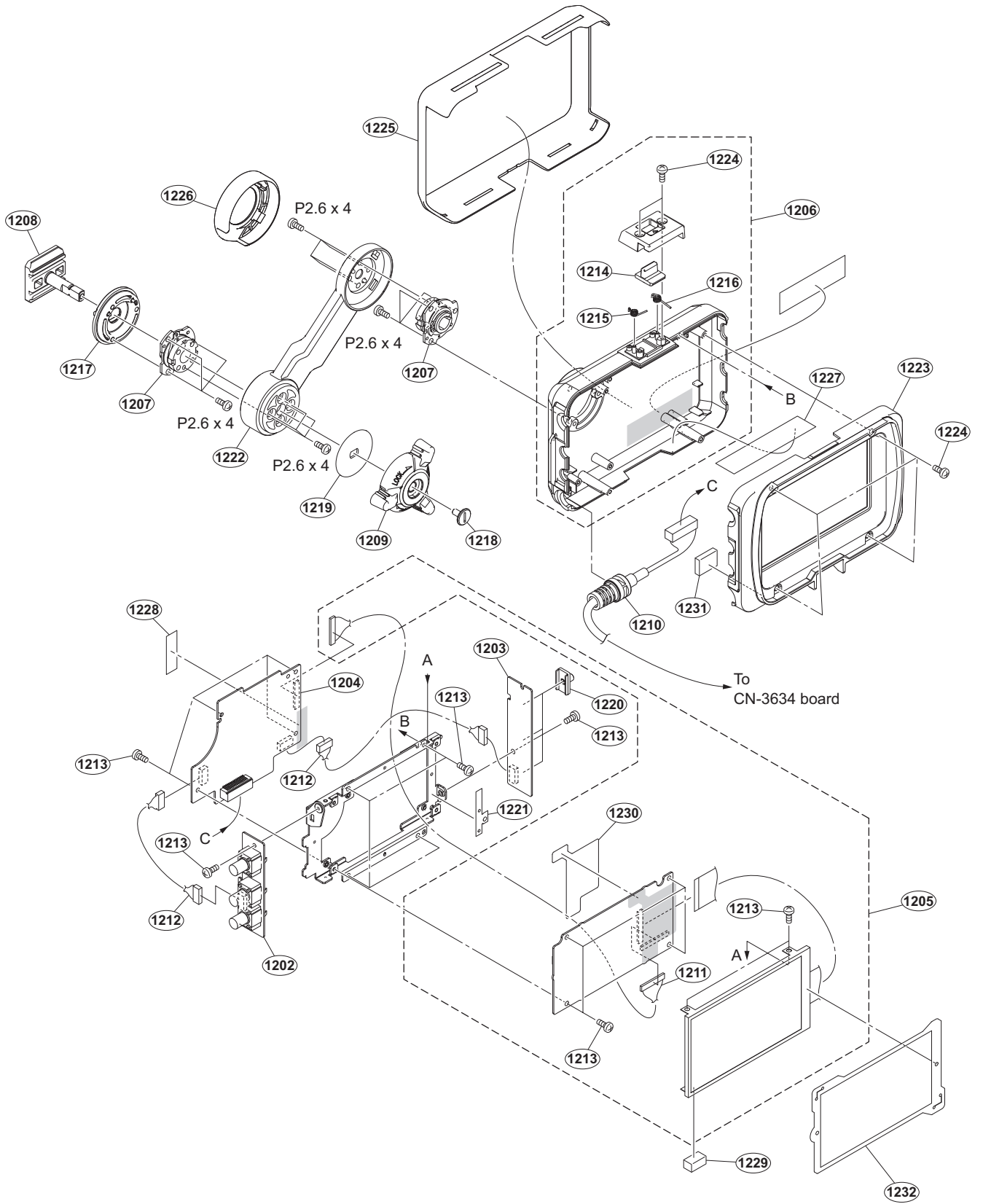


No.	Part No.	SP Description	No.	Part No.	SP Description
1001	2-635-562-31 s	SCREW (M1.7) [P1.7X4]	1023	4-478-014-01 s	CAP, SHAFT HOLDER
1002	3-080-203-41 s	SCREW (M2), LOCK ACE, P2 [P2X5]	1024	4-479-190-01 s	SHEET, PAD LOCK LEVER
1003	3-283-643-41 s	SCREW, TRIPOD			
1004	3-452-472-01 s	BOLT (M4 (SG)), HEXAGON HOLE			
1005	4-477-922-01 s	PANEL, BOTTOM			
1006	4-477-925-01 s	BASE, SHAFT LOCK			
1007	4-477-926-01 s	LEVER, SHAFT LOCK			
1008	4-477-927-01 s	PLATE, SHAFT LOCK			
1009	4-477-928-01 s	SHEET, SHAFT LOCK			
1010	4-477-929-01 s	SHAFT, SHAFT LOCK			
1011	4-477-930-01 s	GASKET, SHAFT			
1012	4-478-003-01 s	PAD (C), SHOULDER			
1013	4-478-004-01 s	PAD (U), SHOULDER			
1014	4-478-005-01 s	PAD (L), SHOULDER			
1015	4-478-006-01 s	SHAFT, SHOULDER PAD			
1016	4-478-007-01 s	LEVER, PAD LOCK			
1017	4-478-008-01 s	SHAFT, PAD LOCK			
1018	4-478-009-01 s	SPRING, PAD LOCK			
1019	4-478-010-01 s	SHAFT, PAD			
1020	4-478-011-01 s	HOLDER (U), SHAFT			
1021	4-478-012-01 s	HOLDER (L), SHAFT			
1022	4-478-013-01 s	SHEET, SHAFT HOLDER			

VF-1



No.	Part No.	SP Description
1101	A-1853-004-A	s LOUPE ASSY
1102	A-1972-297-A	s ELBOW SUB ASSY
1103	X-2541-756-2	s MIRROR ASSY
1104	1-856-308-12	s LOUPE, VF
1105	3-878-206-02	s SPRING ,TORSION COIL
1106	3-878-207-01	s BLOCK, SHAFT FIXED
1107	3-878-208-02	s EYE CUP
1108	3-878-209-02	s HINGE, SWITCHING
1109	3-878-231-11	s SW SLIDE
1110	3-878-232-11	s SPRING (A90), TORSION COIL
1111	3-878-233-11	s SPRING (A-70), TORSION COIL
1112	4-168-080-01	s LEVER, LOCK
1113	4-284-225-02	s HOLDER, EYE CUP
1114	4-654-273-02	s ACE (M2), LOCK [M2X5]
1115	3-602-979-02	s LABEL, CAUTION
	7-621-284-00	s SCREW +P 2.6X4
	7-626-314-31	s SPRING PIN 2X16



VF-2

No.	Part No.	SP Description
1202	A-1968-726-A	s MOUNTED CIRCUIT BOARD, VR-351
1203	A-1968-733-A	s MOUNTED CIRCUIT BOARD, SW-1603
1204	A-1968-736-A	s MOUNTED CIRCUIT BOARD, IF-1242
1205	A-1970-745-A	s LCD ASSY, 3.5 INCH
1206	A-1972-794-A	s BACK ASSY, VF CASE
1207	X-2318-442-1	s HINGE ASSY
1208	X-2586-817-1	s SHAFT ASSY, SHOE
1209	X-2588-503-1	s KNOB (A) ASSY, LOCK
1210	1-846-690-21	s CORD, CONNECTION (VF)
1211	1-969-524-11	s HARNESS (IF-LCD3)
1212	1-969-772-11	s SUB HARNESS (VF)
1213	3-968-729-52	s SCREW (M2), LOCK ACE, P2 [P2X3]
1214	3-878-231-11	s SW SLIDE
1215	3-878-232-11	s SPRING (A90), TORSION COIL
1216	3-878-233-11	s SPRING (A-70), TORSION COIL
1217	4-456-179-01	s ROCK RING
1218	4-456-181-01	s SCREW STOPPER
1219	4-456-183-01	s WASHER SLOCK
1220	4-458-703-02	s KNOB (VF), SWITCH
1221	4-479-399-01	s SHEET VFB
1222	4-479-738-01	s ARM (L), VF
1223	4-480-313-01	s CASE (FRONT), VF
1224	4-654-273-02	s ACE (M2), LOCK [M2X5]
1225	4-485-671-01	s PROTECT-COVER, VF
1226	4-485-931-01	s CAP, VF ARM
1227	4-486-797-01	s SHEET (VFB2)
1228	3-079-115-01	s TAPE AS
1229	4-459-282-71	s GASKET (10X7)
1230	4-460687-01	s SHEET, HARNESS PROTECTION
1231	4-461-425-01	s HINGE (B), GASKET
1232	4-487-751-01	s SHEET, LCD FRAME
	7-627-556-38	s SCREW +P 2.6X4.0

PMW-300 (J)
PMW-300 (UC)
PMW-300 (CE)
PMW-300 (E)
PMW-300 (CN) J, E
9-878-486-01

Sony Corporation

Printed in Japan
2013. 9 08
© 2013