

SONY®

SOLID-STATE MEMORY CAMCORDER

PMW-350

PMW-320

PMW-EX350

PMW-EX330

50 PIN IF AND DIGITAL EXTENDER
CBK-CE01

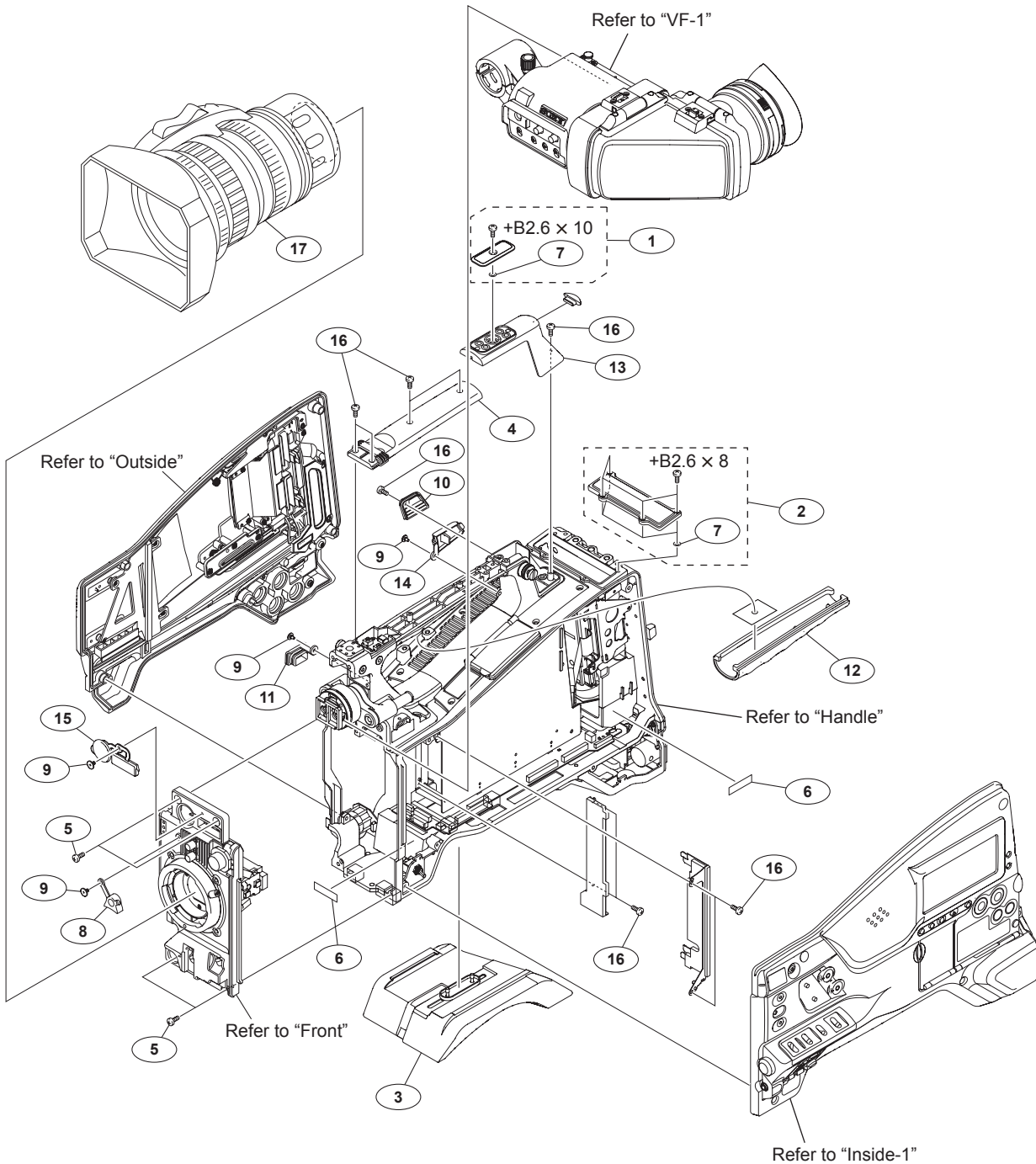
XDCMEX
CINEALTA

SXS
Exmor
FULL HD 3CMOS

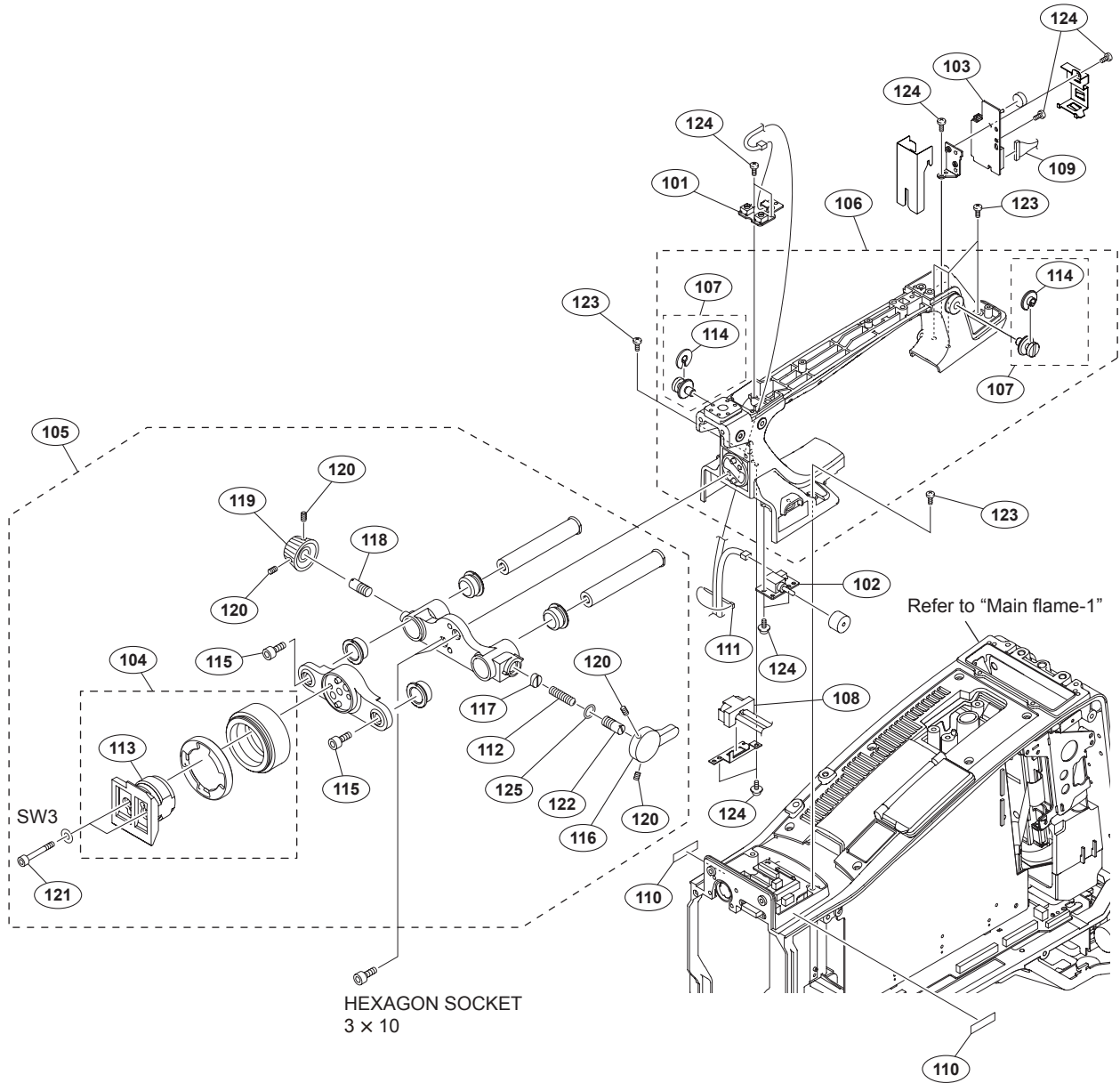
i
HDMI

SERVICE MANUAL
1st Edition (Revised 4)

5-2. Exploded Views



No.	Part No.	SP Description	No.	Part No.	SP Description
1	A-1106-989-A	s COVER ASSY, SHOE	11	4-168-996-01	s CAP (LIGHT CONNECTOR)
2	A-1541-534-A	s PLATE (WRR) ASSY, BLIND	12	4-168-997-02	s GRIP (for PMW-350/PMW-EX350)
3	A-1752-736-A	s SHOULDER PAD ASSY		4-168-997-11	s GRIP (for PMW-320/PMW-EX330)
4	X-2541-837-2	s COVER ASSY, HANDLE (TOP)	13	4-168-998-02	s COVER, TALLY
5	3-742-074-13	s SCREW (+B 3X8)	14	4-168-999-01	s CAP (USB)
6	3-079-115-01	s TAPE AS	15	4-169-085-02	s CAP, CONNECTOR
7	3-742-004-01	s RING, NYLON	16	4-654-273-02	s ACE (M2), LOCK
8	3-796-982-03	s HOLDER LENS MOUNT	17	1-856-053-22	s 1/2 INCH, ZOOMLENS
9	3-965-077-02	s SCREW, SPECIAL (M2)			(for PMW-350K/PMW-EX350)
10	4-168-989-01	s LID(USB)		1-856-135-21	s 1/2 INCH, ZOOMLENS
					(for PMW-320K/PMW-EX330K)
				7-621-775-40	s SCREW +B 2.6X8
				7-621-775-50	s SCREW +B 2.6X10

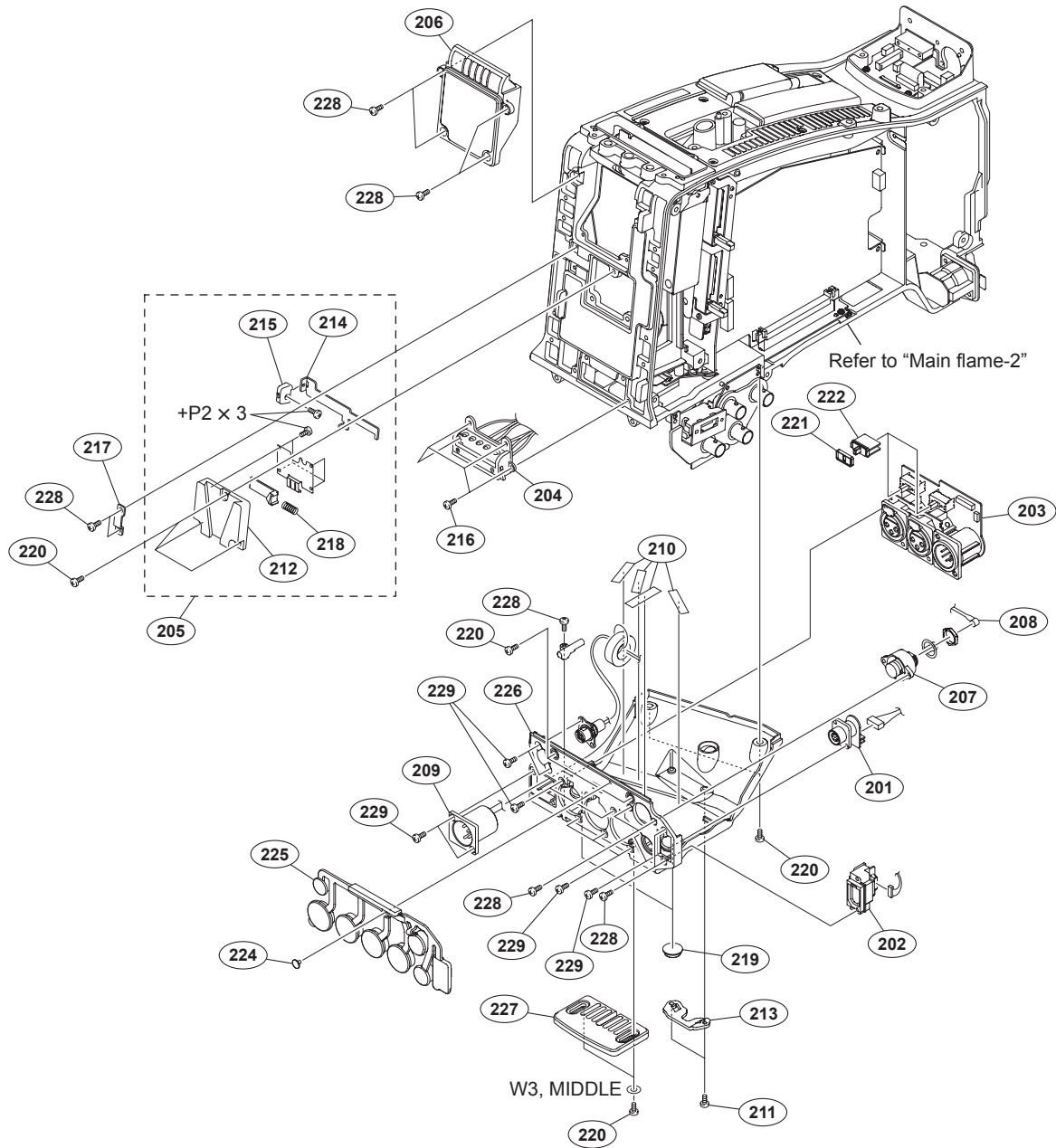


No.	Part No.	SP Description
101	A-1741-535-A	s MOUNTED CIRCUIT BOARD, SW-1475
102	A-1741-536-A	s MOUNTED CIRCUIT BOARD, SW-1476
103	A-1741-558-A	s MOUNTED CIRCUIT BOARD, LED-492
104	A-8278-412-J	s SHOE ASSY, VF
105	A-8286-289-A	s SLIDE ASSY, VF
106	X-2541-835-2	s HANDLE SUB ASSY
107	X-3710-037-1	s SUSPENSION ASSY (C)
108	1-967-028-11	s HARNESS, SUB (LIGHT)
109	1-967-071-11	s HARNESS, SUB (SUB LED)
110	3-079-115-01	s TAPE AS
111	3-337-402-01	o BAND, BINDING
112	3-612-822-01	s SPRING, COMPRESSION
113	3-627-853-07	s SHOE, SLIDE
114	3-654-615-02	s COLLAR, SUSPENSION
115	3-657-705-91	s BOLT (M4X8), HEXAGON HOLE

No.	Part No.	SP Description
116	3-673-046-21	s LEVER, LOCK
117	3-679-702-11	s CUSION, STOPPER
118	3-690-660-02	s LOCK, SCREW
119	3-690-674-02	s KNOB, LOCK
120	3-701-507-01	s SET SCREW, DOUBLE POINT, (M3X5)
121	3-711-765-01	s BOLT (M3), HEXAGON SOCKET
122	3-711-794-12	s PIN, STOPPER
123	3-742-074-13	s SCREW (+B 3X8)
124	3-855-938-01	s SCREW
125	3-895-622-01	s RING (DIA. 5), 0

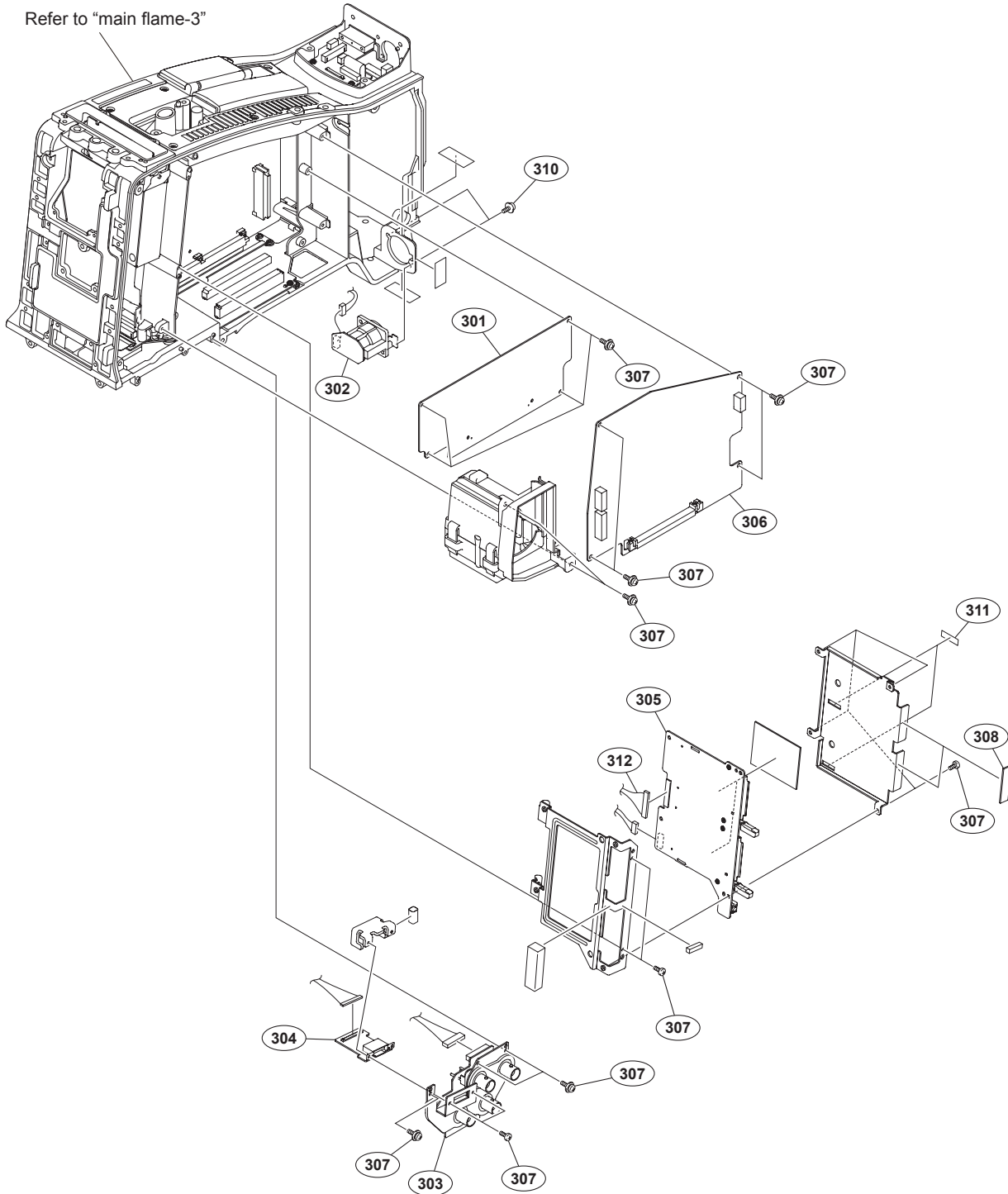
7-623-208-22 s SW 3, TYPE 2
 7-683-405-04 s BOLT, HEXAGON SOCKET 3X10

Main Flame-1



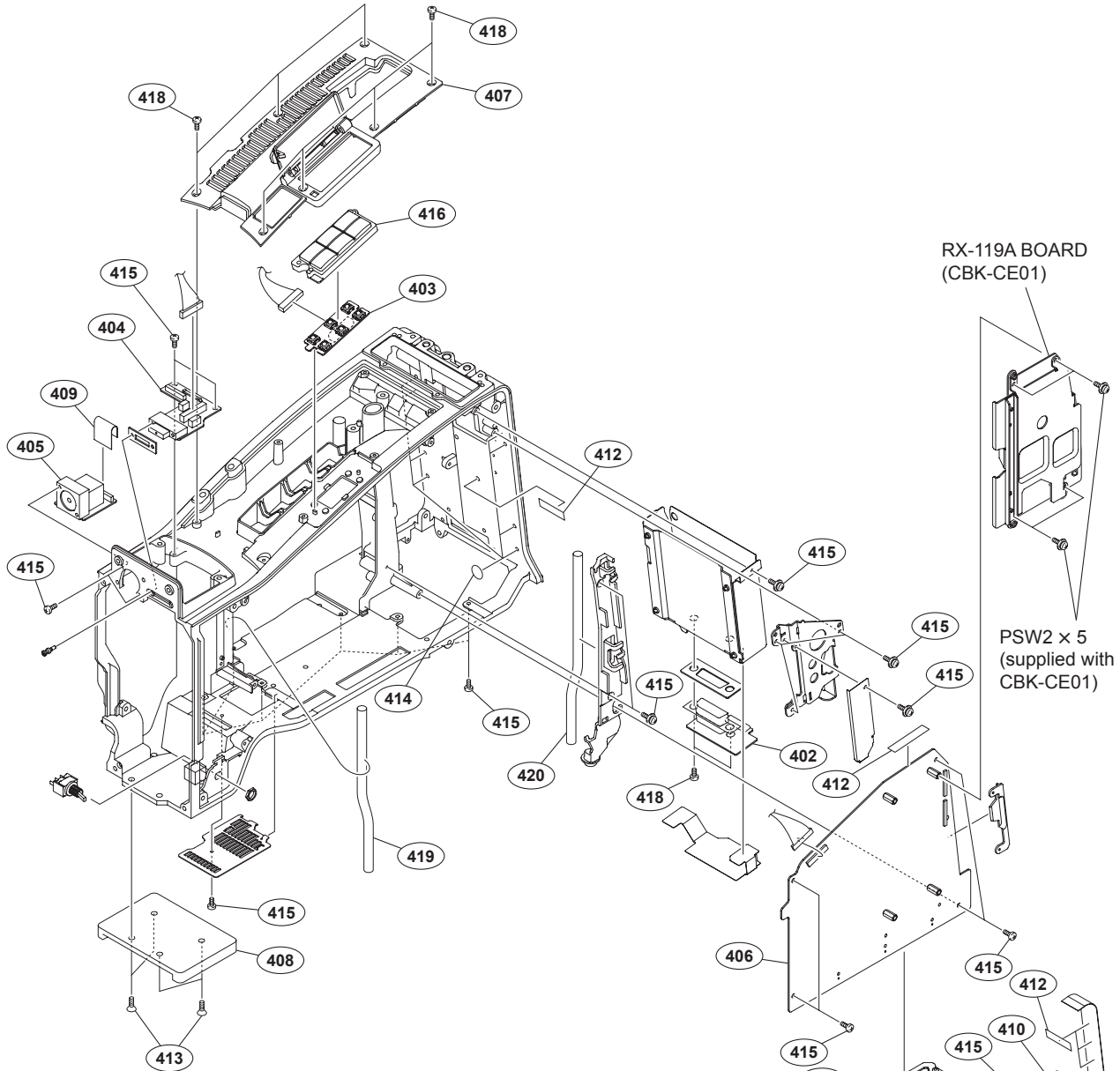
No.	Part No.	SP Description	No.	Part No.	SP Description
201	A-1741-534-A	s MOUNTED CIRCUIT BOARD, RM-222	216	3-694-181-03	s TYPE1,AROCK PRECISION +P2.6X5
202	A-1741-559-A	s MOUNTED CIRCUIT BOARD, CN-3270	217	3-697-119-03	s RETAINER
203	A-1771-388-A	s MOUNTED CIRCUIT BOARD, AXM-41 (RP)	218	3-704-964-01	s SPRING, COMPRESSION
204	A-1752-755-A	s HARNESS ASSY, BATTERY	219	3-723-097-01	o FOOT, RUBBER
205	A-8279-091-D	s MOUNT ASSY,V	220	3-742-074-13	s SCREW (+B 3X8)
206	X-2541-836-1	s ASSY,50P COVER	221	3-796-985-02	s CUSHION,DROP PROTECTION
207	1-784-240-11	s CONVERTER, COAXIAL CONNECTOR	222	3-796-986-01	s KNOB,SLIDE SW
208	1-837-372-11	s CABLE ASSEMBLY, COAXIAL	224	3-965-077-02	s SCREW, SPECIAL (M2)
209	1-967-024-13	s HARNESS, SUB (DC IN)	225	4-168-992-01	s COVER(XLR),DROP PROTECTION
210	3-079-115-01	s TAPE AS	226	4-169-125-02	s BOX, CONNECTOR
211	3-364-941-01	s SCREW (+B) (2.6X5), NYLOK	227	4-176-668-01	s BOTTOM GUARD
212	3-616-721-02	o MOUNT (2),V	228	4-654-273-02	s ACE (M2), LOCK
213	3-626-781-03	s STOPPER	229	4-674-315-01	s SCREW (M2.6X6)
214	3-679-688-03	s LEVER,RELEASE			
215	3-680-952-02	o KNOB,RELEASE LEVER			

7-627-553-38 s SCREW,Precision +P 2X3
 7-688-003-12 s W3, MIDDLE



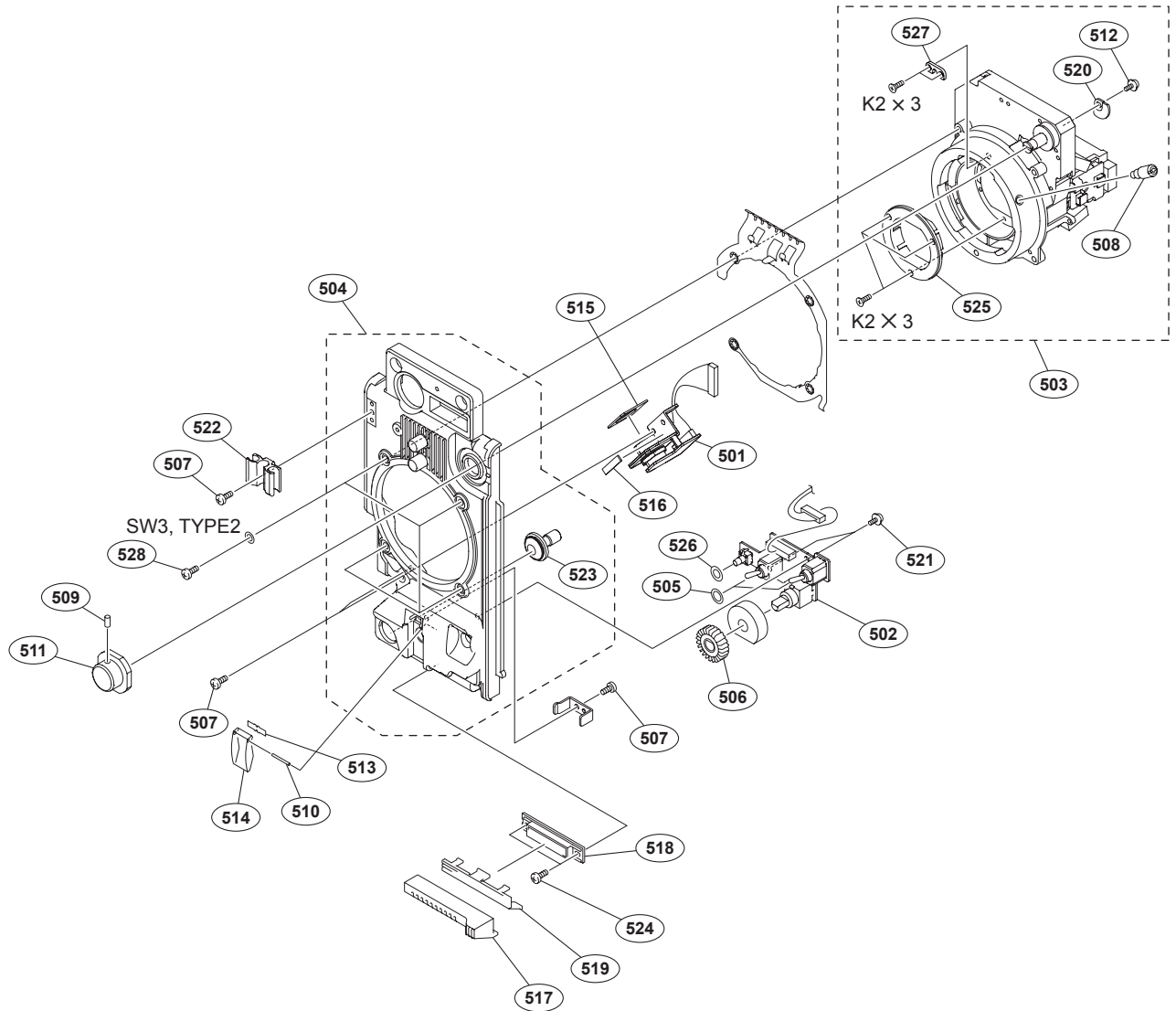
No.	Part No.	SP Description	No.	Part No.	SP Description
301	A-1771-387-A s	MOUNTED CIRCUIT BOARD, AU-327 (RP)	311	4-186-409-01 s	SHEET (EC)
302	A-1741-541-A s	MOUNTED CIRCUIT BOARD, CN-3269	312	1-967-037-11 s	HARNESS (DPR-EC)
303	A-1741-545-A s	MOUNTED CIRCUIT BOARD, IO-247			
304	A-1771-392-A s	MOUNTED CIRCUIT BOARD, DIF-193 (RP)			
305	A-1771-391-A s	MOUNTED CIRCUIT BOARD, EC-66 (RP)			
306	A-1742-370-A s	MOUNTED CIRCUIT BOARD, RE-271			
307	3-855-938-01 s	SCREW			
308	4-175-796-01 s	SHEET (CONNECT), RADIATION			
310	4-674-315-01 s	SCREW (M2.6X6)			

Main Flame-3



No.	Part No.	SP Description
401	A-1741-540-A s	MOUNTED CIRCUIT BOARD, MB-1154
402	A-1741-543-A s	MOUNTED CIRCUIT BOARD, RX-117
403	A-1741-544-A s	MOUNTED CIRCUIT BOARD, KY-658
404	A-1741-561-A s	MOUNTED CIRCUIT BOARD, HN-358
405	A-1741-562-A s	MOUNTED CIRCUIT BOARD, CN-3267
406	A-1742-369-A s	MOUNTED CIRCUIT BOARD, DPR-313 (RP) (for PMW-350)
	A-1813-919-A s	MOUNTED CIRCUIT BOARD, DPR-313 (RP) (for PMW-320)
	A-1814-239-A s	MOUNTED CIRCUIT BOARD, DPR-313 (RP) (for PMW-EX330)
	A-1897-978-A s	MOUNTED CIRCUIT BOARD, DPR-313 (RP) (for PMW-EX350)
407	A-1752-754-A s	COVER ASSY, TOP
408	A-8279-993-C s	SHOE(D) ASSY, V
409	1-837-295-11 s	CABLE, FLEXIBLE FLAT (30 CORE)
410	1-837-296-11 s	CABLE, FLEXIBLE FLAT (30 CORE)
411	1-837-297-11 s	CABLE, FLEXIBLE FLAT (30 CORE)
412	3-079-115-01 s	TAPE AS
413	3-729-072-02 s	SCREW, +K (4X8)
414	3-796-946-02 s	TAPE (A)
415	3-855-938-01 s	SCREW

No.	Part No.	SP Description
416	4-169-111-01 s	KEYSW COVER
418	4-654-273-02 s	ACE (M2), LOCK
419	4-169-108-02 s	TUBE, DRAIN
420	4-169-108-12 s	TUBE, DRAIN

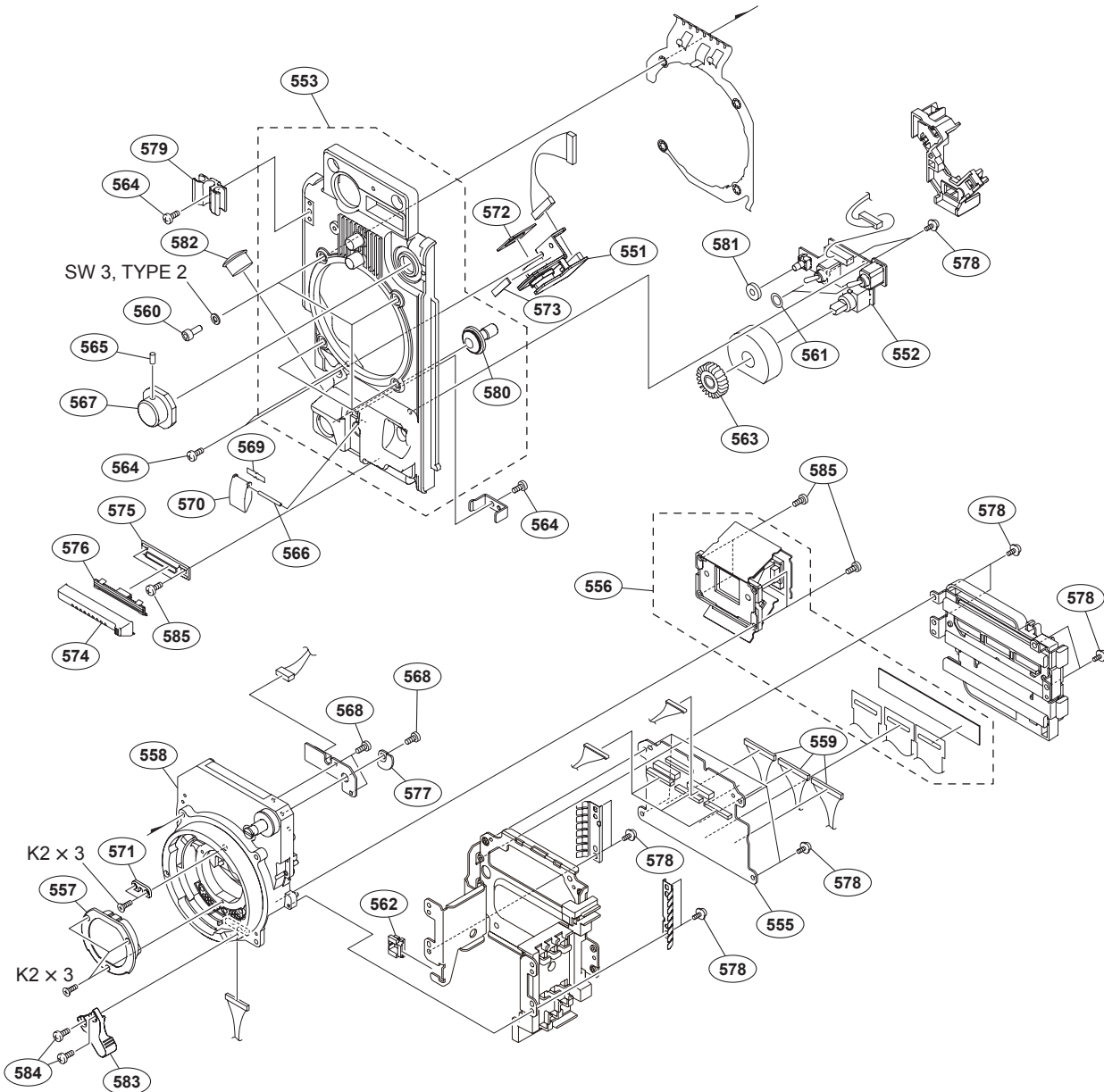


No.	Part No.	SP Description
501	A-1741-551-A	s MOUNTED CIRCUIT BOARD, CN-3268
502	A-1741-552-A	s MOUNTED CIRCUIT BOARD, SW-1474
503	A-1773-604-A	s CMOS BLOCK ASSY (RP)
504	A-1758-097-B	s FRONT PANEL SUB ASSY
505	3-312-823-01	s PACKING, KNOB
506	3-624-135-01	s KNOB, VR (AUDIO)
507	3-637-901-11	s SCREW M2.6X5
508	3-678-629-04	s LEVER, MOUNT
509	3-701-505-01	s SET SCREW, DOUBLE POINT 3X3
510	3-703-357-05	s PIN, PARALLEL (DIA. 1.6X8)
511	3-710-054-01	s KNOB, FILTER
512	3-729-076-11	s SCREW (+B) (2X4)
513	3-742-066-11	o SPRING, SHUTTER
514	3-742-067-06	s LID, SHUTTER
515	3-796-967-11	s CUSHION,DROP PROTECTION CONNEC

No.	Part No.	SP Description
516	3-796-970-11	s CUSHION,DROP PROTECTION CONNEC
517	3-854-361-01	s GUARD VOLUME FRONT
518	3-854-362-01	s HOLDER GUARD
519	3-854-363-01	s SLIDER
520	3-854-378-01	s PLATE,FILTER ID
521	3-855-938-01	s SCREW
522	3-870-272-02	s CLAMP, CABLE
523	3-986-632-02	s BUTTON,VTR START
524	4-654-273-02	s ACE (M2), LOCK
525	1-856-052-11	s FILTER UNIT, OPTICAL
526	3-990-897-01	s CUSHION REC (SW)
527	3-776-897-02	s GUIDE PLATE
528	2-623-773-11	s BOLT (M3X8), STAINLESS

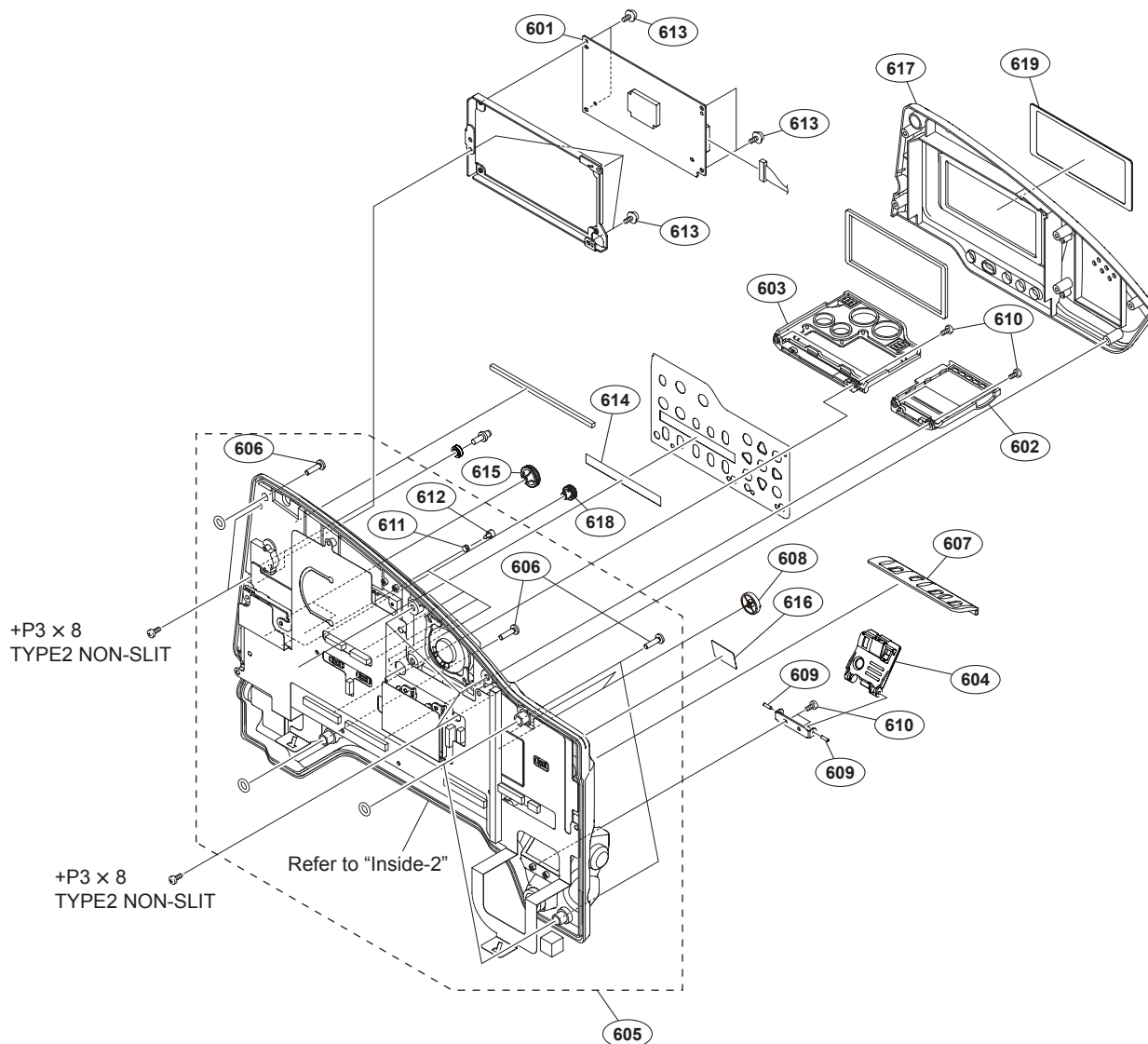
7-627-452-18 s SCREW, PRECISION +K 2X3
 7-623-208-22 s SW 3, TYPE 2

Front (PMW-320/PMW-EX330)



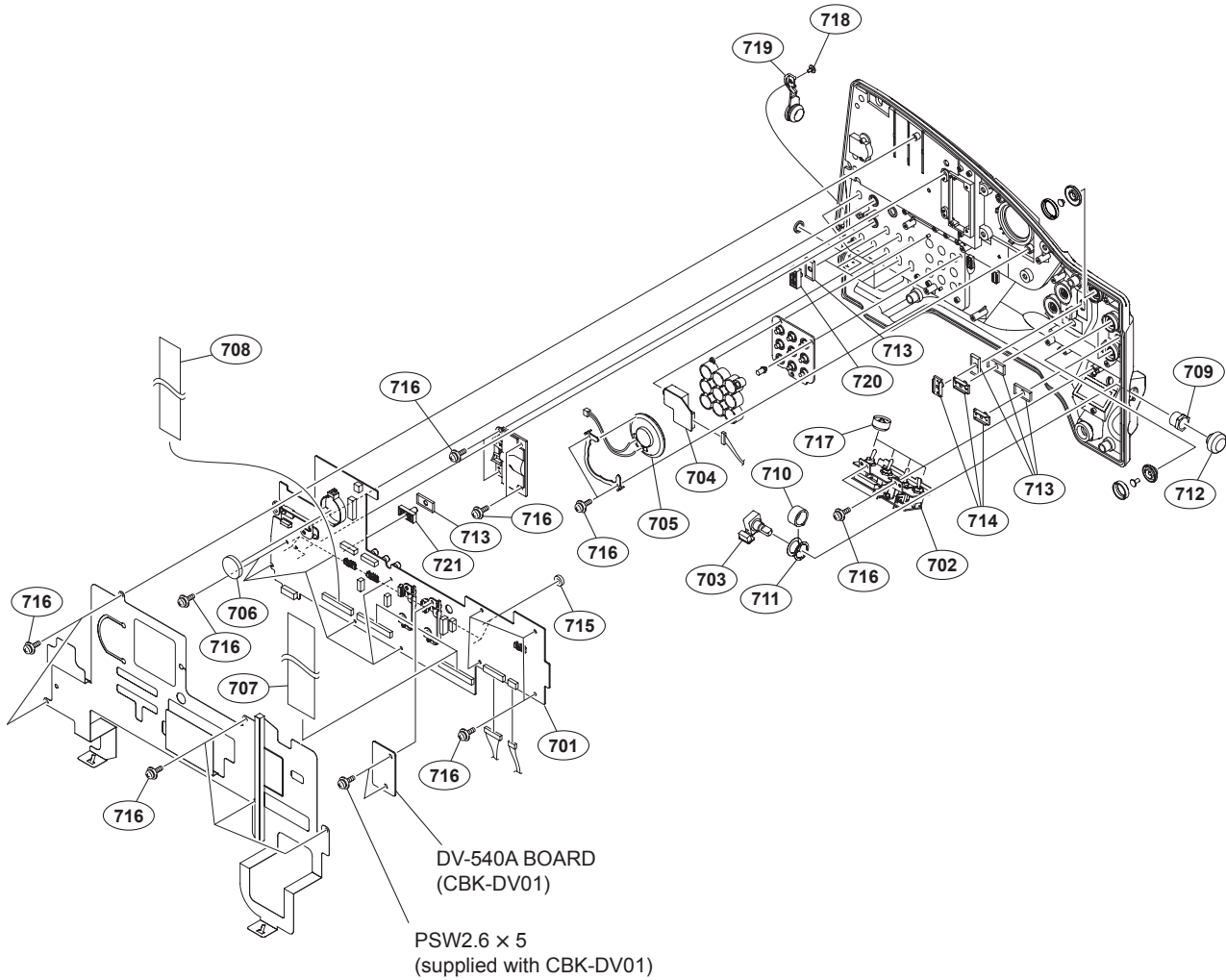
No.	Part No.	SP Description	No.	Part No.	SP Description
551	A-1741-551-A	s MOUNTED CIRCUIT BOARD, CN-3268	569	3-742-066-11	o SPRING, SHUTTER
552	A-1741-552-A	s MOUNTED CIRCUIT BOARD, SW-1474	570	3-742-067-06	s LID, SHUTTER
553	A-1758-097-B	s FRONT PANEL SUB ASSY	571	3-776-897-02	s GUIDE PLATE
555	A-1785-890-A	s MOUNTED CIRCUIT BOARD, HN-367 (RP)	572	3-796-967-11	s CUSHION, DROP PROTECTION CONNEC
556	A-1794-234-A	s PRISM ASSY (RP)	573	3-796-970-11	s CUSHION, DROP PROTECTION CONNEC
557	1-856-132-11	s FILTER UNIT, OPTICAL	574	3-854-361-01	s GUARD VOLUME FRONT
558	1-856-133-11	s MOUNT, LENS	575	3-854-362-01	s HOLDER GUARD
559	1-967-474-11	s HARNESS (DPR-CMOS)	576	3-854-363-01	s SLIDER
560	2-623-773-11	s BOLT (M3X8), STAINLESS	577	3-854-378-01	s PLATE, FILTER ID
561	3-312-823-01	s PACKING, KNOB	578	3-855-938-01	s SCREW
562	3-383-699-01	s CLAMP (EDGE)	579	3-870-272-02	s CLAMP, CABLE
563	3-624-135-01	s KNOB, VR (AUDIO)	580	3-986-632-02	s BUTON, VTR START
564	3-637-901-11	s SCREW M2.6X5	581	3-990-897-01	s CUSHION REC(SW)
565	3-701-505-01	s SET SCREW, DOUBLE POINT 3X3	582	3-991-431-01	s CAP, DROP PROTECTION
566	3-703-357-05	s PIN, PARALLEL (DIA. 1.6X8)	583	4-198-910-01	s LEVER, MOUNT
567	3-710-054-01	s KNOB, FILTER	584	4-644-492-72	s ACE (M2), LOCK
568	3-729-076-11	s SCREW (+B) (2X4)	585	4-654-273-02	s ACE (M2), LOCK

7-623-208-22 s SW 3,TYPE 2
 7-627-452-18 s SCREW, PRECISION +K 2X3

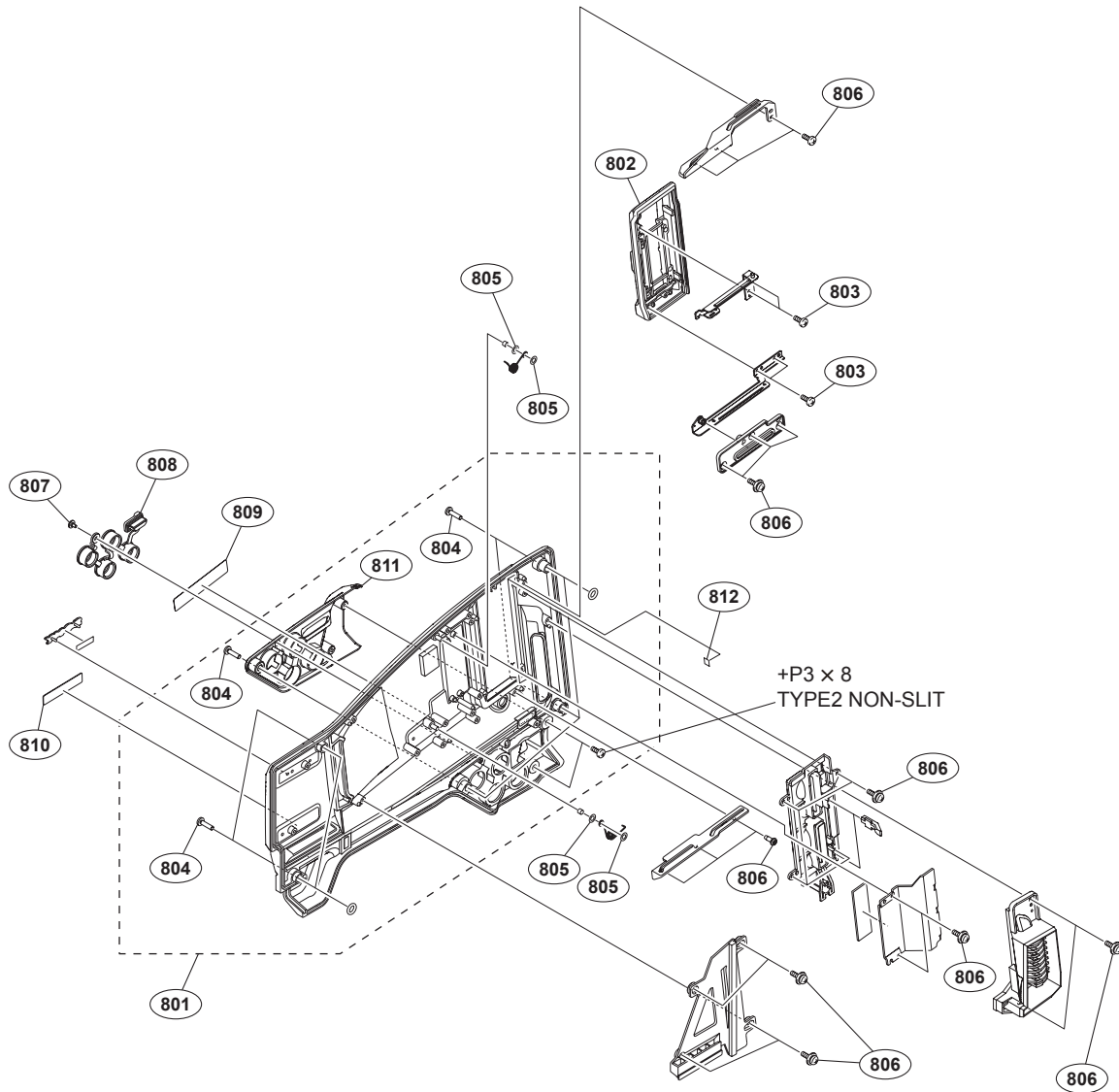


No.	Part No.	SP Description
601	A-1772-494-A	s MOUNTED CIRCUIT BOARD, PD-119 (RP)
602	A-1752-742-B	s DOOR (L) ASSY, SWITCH
603	A-1752-743-C	s DOOR (R) ASSY, SWITCH
604	A-1752-744-A	s DOOR ASSY, MENU
605	A-1752-745-B	s PANEL SUB ASSY, INSIDE
606	3-603-680-02	s STAINLESS SCREW +B3X12
607	3-629-768-52	s ORNAMENTAL PLATE(3), SW, CAMERA
608	3-680-219-03	s KNOB, VR
609	3-703-357-03	s PIN, PARALLEL (DIA. 1.6X6)
610	3-719-381-02	s SCREW (M2X4)
611	3-724-758-02	s RUBBER (PUSH), DROP PROTECTION
612	3-797-073-01	s RES, SW PUSE
613	3-855-938-01	s SCREW
614	3-879-092-01	s SHEET, SW PANEL
615	4-169-001-01	s VR KNOB(2)
616	4-169-004-01	s LABEL, FILTER INDICATION
617	4-169-006-01	s PAD, INSIDE
618	4-169-018-01	s VR KNOB(S)
619	4-169-021-01	s WINDOW, LCD

7-685-146-11 s SCREW +P 3X8 TYPE2 NON-SLIT

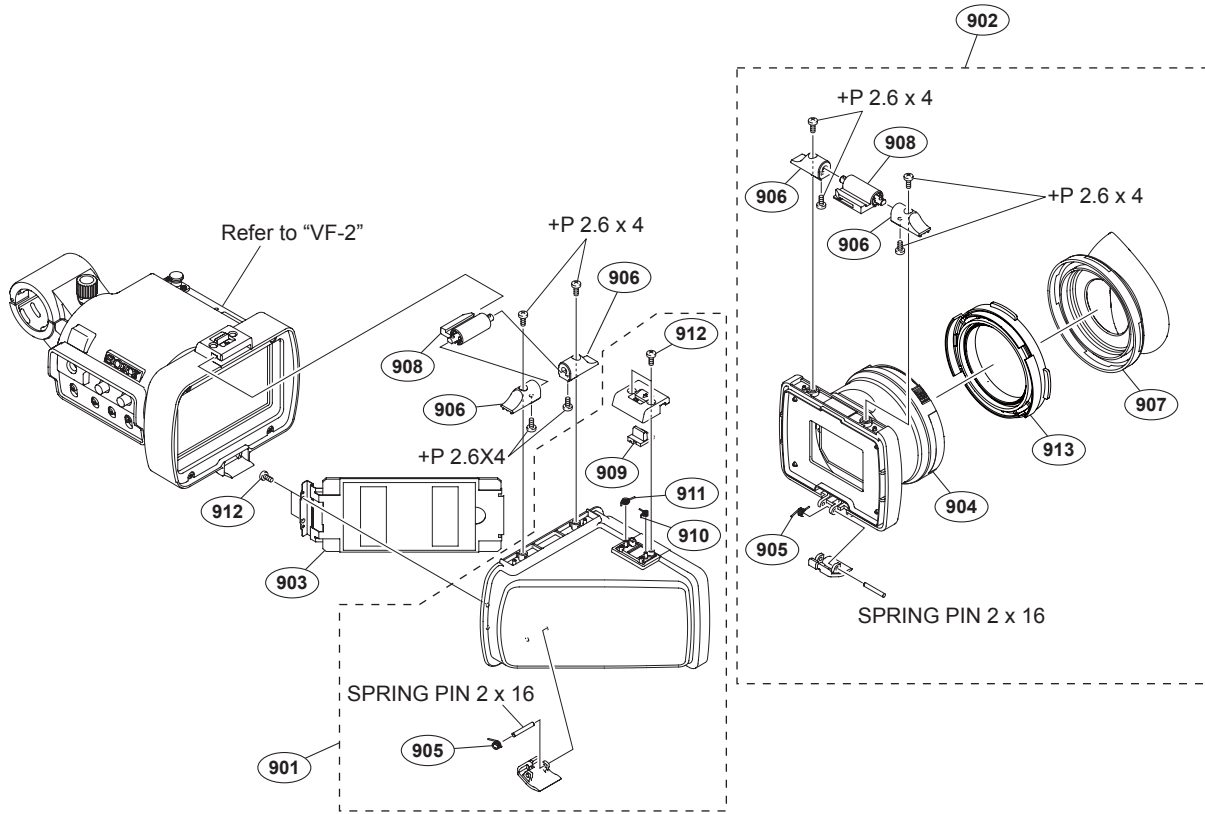


No.	Part No.	SP	Description
701	A-1771-389-A	s	MOUNTED CIRCUIT BOARD, FP-169 (RP)
702	A-1741-565-A	s	MOUNTED CIRCUIT BOARD, SW-1473
703	A-1741-566-A	s	MOUNTED CIRCUIT BOARD, ENC-130
704	A-1741-567-A	s	MOUNTED CIRCUIT BOARD, HP-159
705	1-503-293-12	s	SPEAKER
706	Δ 1-528-174-71	s	BATTERY, LITHIUM (CR2032 TYPE)
707	1-837-293-11	s	CABLE, FLEXIBLE FLAT (30 CORE)
708	1-837-294-11	s	CABLE, FLEXIBLE FLAT (25 CORE)
709	3-629-446-04	s	SLEEVE (ENC2)
710	3-629-447-03	o	SLEEVE (ENC1)
711	3-647-917-02	s	PLATE, EARTH
712	3-692-111-02	s	KNOB, RE
713	3-796-995-01	s	DROP PROTECTION (SW)
714	3-796-996-02	s	KNOB (A), SW
715	3-797-016-01	s	CUSHION VOLUME AUDIO
716	3-855-938-01	s	SCREW
717	3-870-137-02	s	CAP, DROP PROTECTION
718	3-965-077-02	s	SCREW, SPECIAL (M2)
719	4-168-991-01	s	COVER, HEADPHONE JACK
720	4-169-002-01	s	KNOB (C), SWITCH
721	4-169-003-01	s	KNOB (B), SWITCH



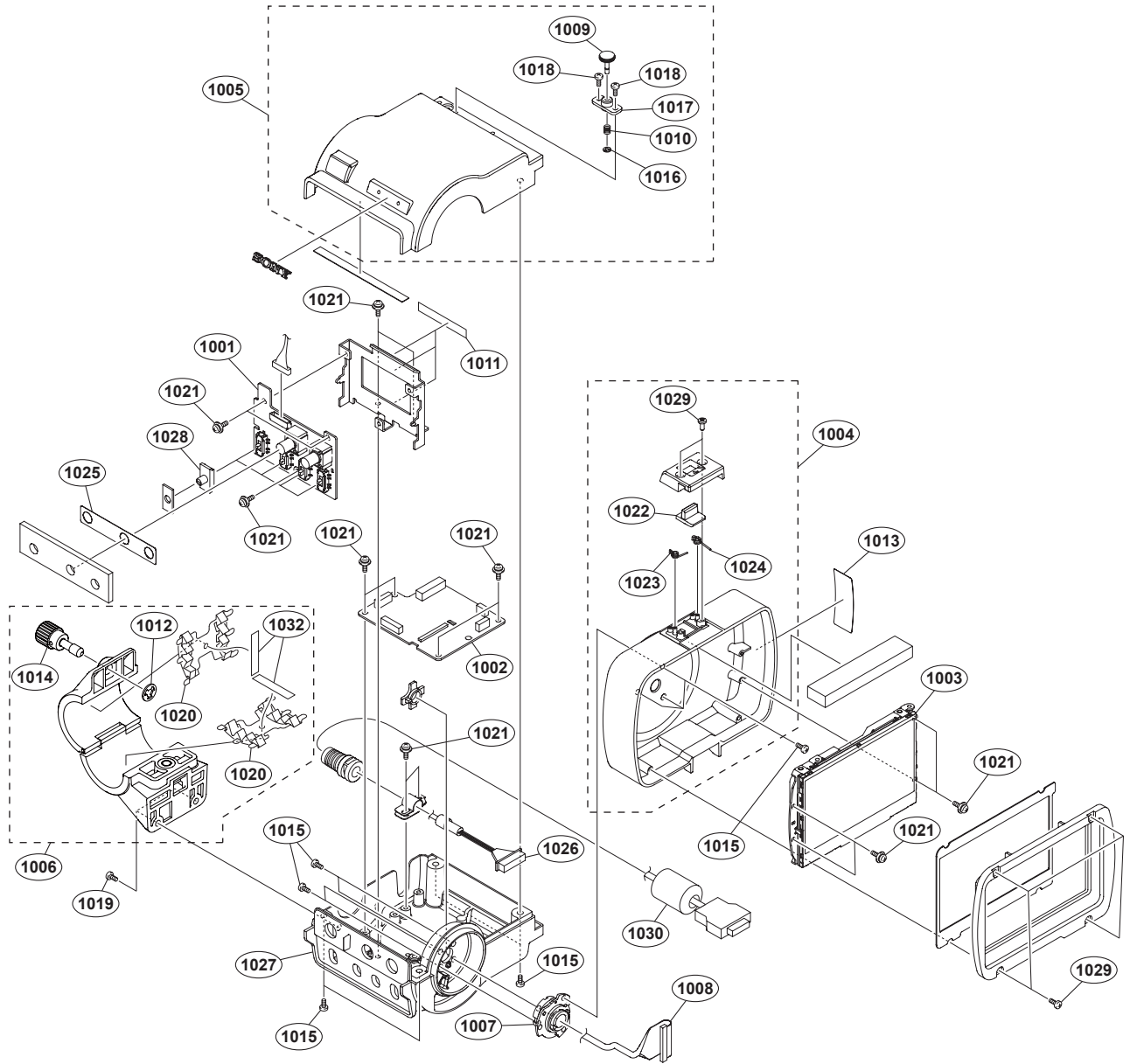
No.	Part No.	SP Description
801	A-1752-746-B	s PANEL SUB ASSY, OUTSIDE
802	A-1752-747-C	s LID ASSY, SLOT
803	3-080-206-21	s SCREW, TAPPING, P2
804	3-603-680-02	s STAINLESS SCREW +B3X12
805	3-223-464-01	s SPACER (SLIDER)
806	3-855-938-01	s SCREW
807	3-965-077-02	s SCREW, SPECIAL (M2)
808	4-168-993-01	s CAP, BNC
809	4-168-994-01	s EMBLEM (LEO), XDCAM EX
810	4-168-995-01	s EMBLEM (LEO), EXMOR (for PMW-350/PMW-EX350)
	4-168-995-11	s EMBLEM (LEO), EXMOR (for PMW-320/EX330)
811	4-169-055-02	s COVER (LEO), BNC
812	4-175-639-01	s STOPPER (OPEN)

7-685-146-11 s SCREW +P 3X8 TYPE2 NON-SLIT



No.	Part No.	SP Description
901	A-1752-655-A	s ELBOW SUB ASSY
902	A-1752-761-A	s LOUPE ASSY
903	X-2541-756-2	s MIRROR ASSY
904	1-856-060-12	s LOUPE, VF
905	3-878-206-02	s SPRING ,TORSION COIL
906	3-878-207-01	s BLOCK,SHAFT FIXED
907	3-878-208-02	s EYE CUP
908	3-878-209-02	s HINGE, SWITCHING
909	3-878-231-11	s SW SLIDE
910	3-878-232-11	s SPRING (A90), TORSION COIL
911	3-878-233-11	s SPRING (A-70),TORSION COIL
912	4-654-273-02	s ACE (M2), LOCK
913	4-284-225-02	s HOLDER, EYE CUP

7-621-775-10 s SCREW +P 2.6X4
 7-626-314-31 s SPRING PIN 2X16



No.	Part No.	SP Description	No.	Part No.	SP Description
1001	A-1741-537-A	s MOUNTED CIRCUIT BOARD, SW-1472	1016	3-669-465-01	s WASHER (1.5), STOPPER
1002	A-1771-390-A	s MOUNTED CIRCUIT BOARD, IF-1125 (RP)	1017	3-710-008-11	s HOUSING, STOPPER
1003	A-1748-439-A	s 3.5 INCH LCD ASSY	1018	3-719-381-02	s SCREW (M2X4)
1004	A-1752-654-A	s CASE ASSY, LCD	1019	3-742-074-13	s SCREW (+B 3X8)
1005	A-1752-757-A	s CASE ASSY, UPPER	1020	3-854-132-01	s GEL, MIC
1006	A-1511-856-B	s MIC HOLDER ASSY (SERVICE)	1021	3-855-938-01	s SCREW
1007	X-2318-442-1	s HINGE ASSY	1022	3-878-231-11	s SW SLIDE
1008	1-967-038-11	s HARNESS (IF-LCD2)	1023	3-878-232-11	s SPRING (A90), TORSION COIL
1009	2-277-457-11	s KNOB, STOPPER	1024	3-878-233-11	s SPRING (A-70), TORSION COIL
1010	2-277-466-11	s SPRING, COMPRESSION	1025	3-878-235-01	s PLATE, BLIND
1011	3-079-115-01	s TAPE AS	1026	1-837-530-11	s CORD, CONNECTION (VF)
1012	3-165-904-01	s WASHER, SCREW STOPPER	1027	4-169-158-03	s CASE, LOWER
1013	3-602-979-02	s LABEL, CAUTION	1028	4-169-160-02	s SW, SLIDE
1014	3-633-916-01	s SCREW (M5)	1029	4-654-273-02	s ACE (M2), LOC
1015	3-637-901-11	s SCREW M2.6X5	1030	1-469-969-11	s CLAMP, FERRITE
			1032	3-941-343-01	s TAPE (A)