

SONY[®]

SOLID-STATE MEMORY CAMCORDER

PMW-EX1

WIDE CONVERSION LENS
VCL-EX0877

XDCMEX **SXS** **i**

CINEALTA *Exmor*[™]
CMOS Sensor

SERVICE MANUAL
1st Edition (Revised 1)

Section 5 Spare Parts

5-1. Notes on Repair Parts

1. Safety Related Components Warning

WARNING

Components marked △ are critical to safe operation. Therefore, specified parts should be used in the case of replacement.

2. Standardization of Parts

Some repair parts supplied by Sony differ from those used for the unit. These are because of parts commonality and improvement.

3. Stock of Parts

Parts marked with “o” at SP (Supply Code) column of the spare parts list may not be stocked. Therefore, the delivery date will be delayed.

4. Harness

Harnesses with no part number are not registered as spare parts.

5-1. 補修部品注意事項

1. 安全重要部品

△警告

△印のついた部品は安全性を維持するために重要な部品です。したがって、交換する時は必ず指定の部品を使ってください。

2. 部品の共通化

ソニーから供給する補修用部品は、セットに使われているものと異なることがあります。これは部品の共通化、改良等によるものです。

3. 部品の在庫

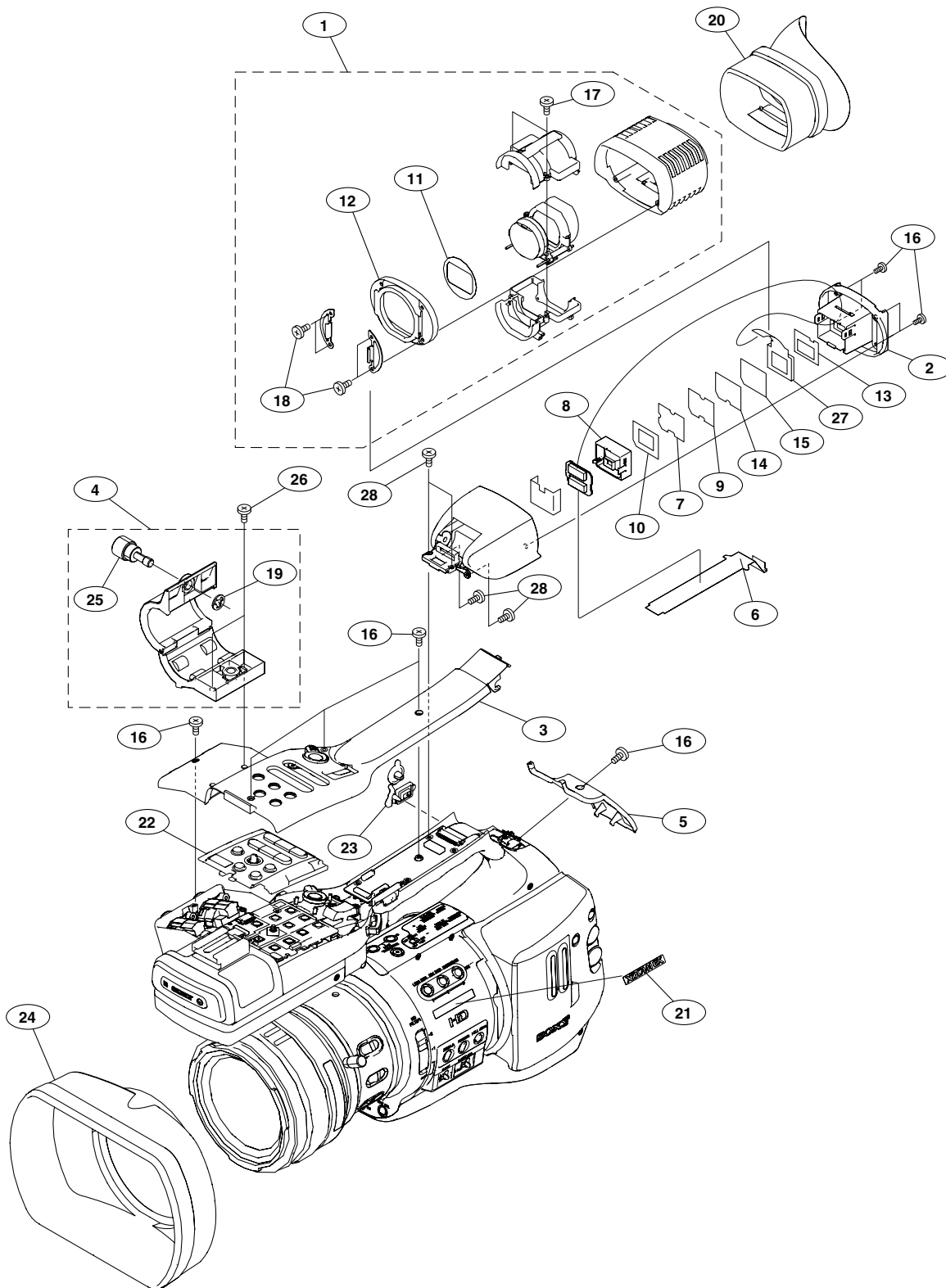
部品表のSP (Supply code) 欄に “o” で示される部品は在庫していないことがあり、納期が長くなることがあります。

4. ハーネス

部品番号が記載されていないハーネスは、サービス部品として登録されていません。

Handle Cover (Upper) Assembly and EVF

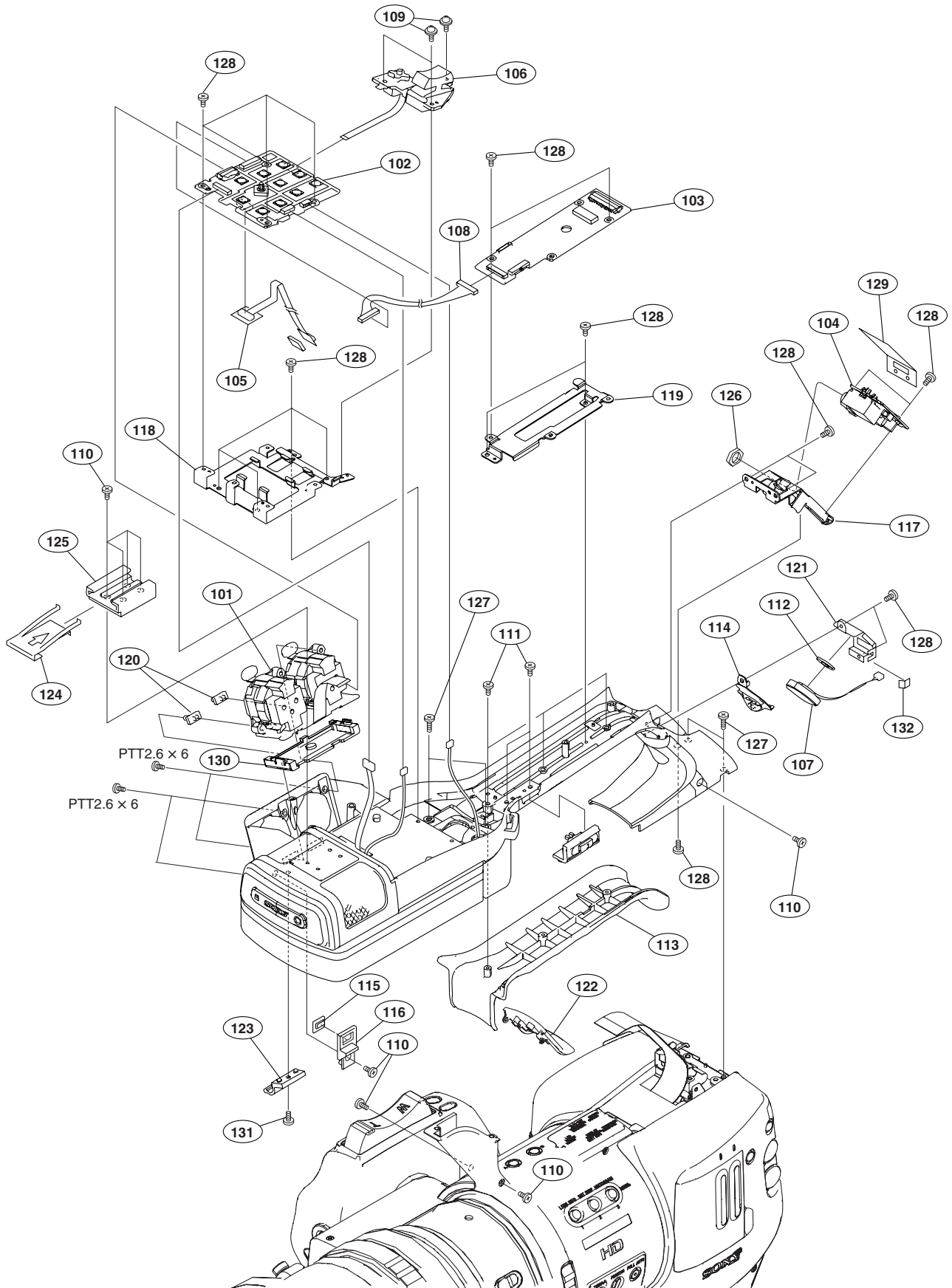
5-2. Exploded Views



Handle Cover (Upper) Assembly and EVF

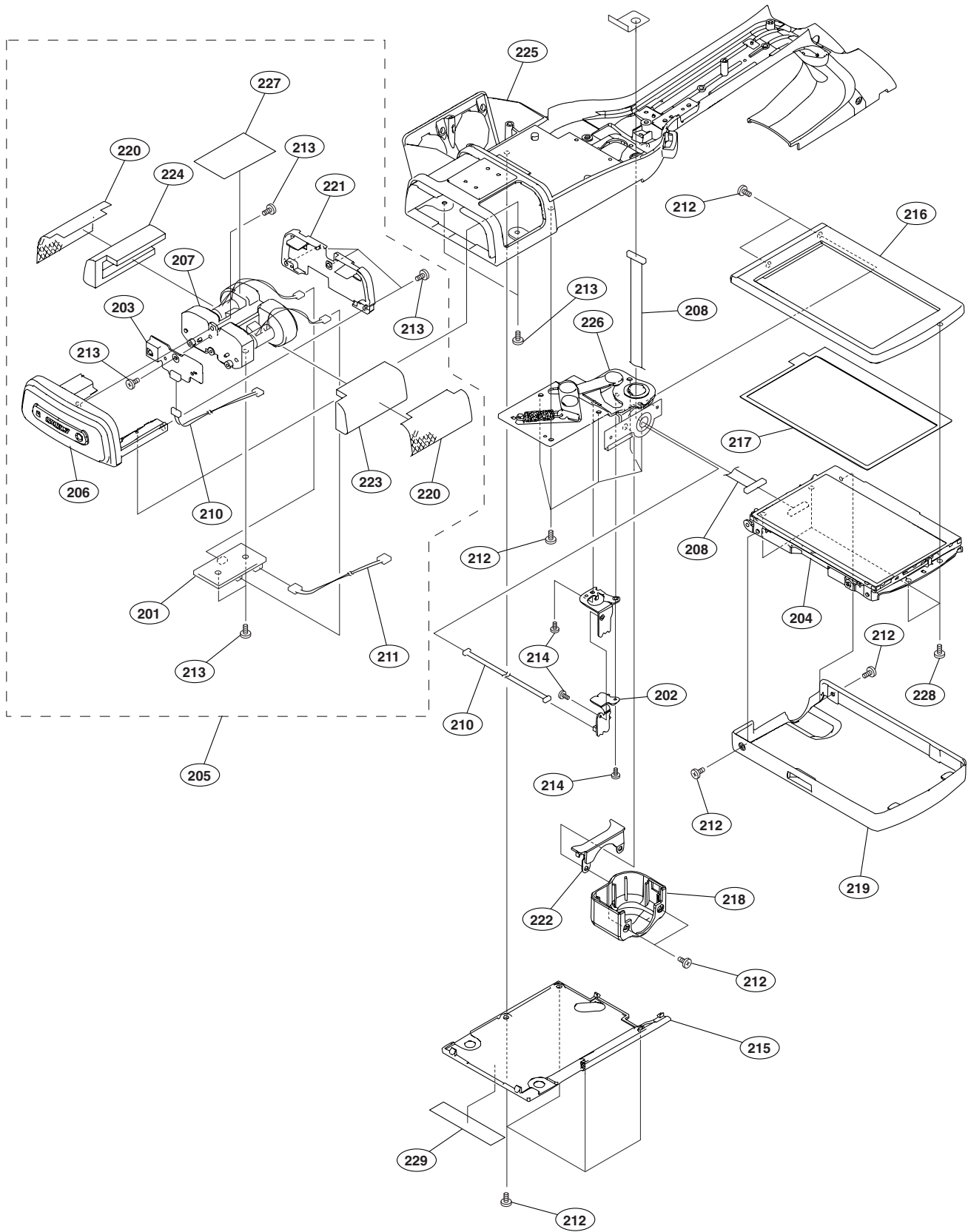
No.	Part No.	SP Description
1	A-1376-777-A	s CABINET REAR ASSY, VF
2	X-2023-924-3	s HOLDER ASSY, LCD
3	X-2187-186-1	s COVER (UPPER) ASSY, HANDLE
4	X-2187-352-1	s MICROPHONE HOLDER ASSY
5	X-2188-557-1	s COVER REAR ASSY,HANDLE
6	1-864-152-13	s PWB, FP-984 FLEXIBLE
7	2-179-257-01	s ILLUMINATOR (VF), LCD
8	2-179-258-01	s GUIDE, LAMP
9	2-179-260-01	s SHEET (B), PRISM
10	2-179-261-01	s CUSHION, LCD
11	2-179-265-01	s PANEL, POLARIZATION
12	2-179-266-01	s BASE, HOLDER
13	2-189-594-01	s PLATE , LCD GROUND
14	2-597-949-01	s SHEET (C), PRISM
15	2-597-950-01	s ILLUMINATOR (UPPER), LCD
16	3-080-203-31	s SREW(M2),LOCK ACE,P2
17	3-080-204-21	s SCREW, TAPPING, P2
18	3-080-206-21	s SCREW, TAPPING, P2
19	3-165-904-01	s WASHER, SCREW STOPPER
20	3-278-319-01	s EYE CUP
21	3-278-644-01	s XDCAM EMBLEM
22	3-278-648-01	s RUBBER SW KEY
23	3-285-383-01	s COVER CONNECTOR
24	3-286-664-01	s HOOD, LENS
25	3-657-657-02	s SCREW (M5)
26	4-673-655-01	s SCREW +B
27	8-753-210-99	s LCX068AK-1
28	3-056-233-21	s SCREW (M2), LOCK ACE, P2

Handle Block 1



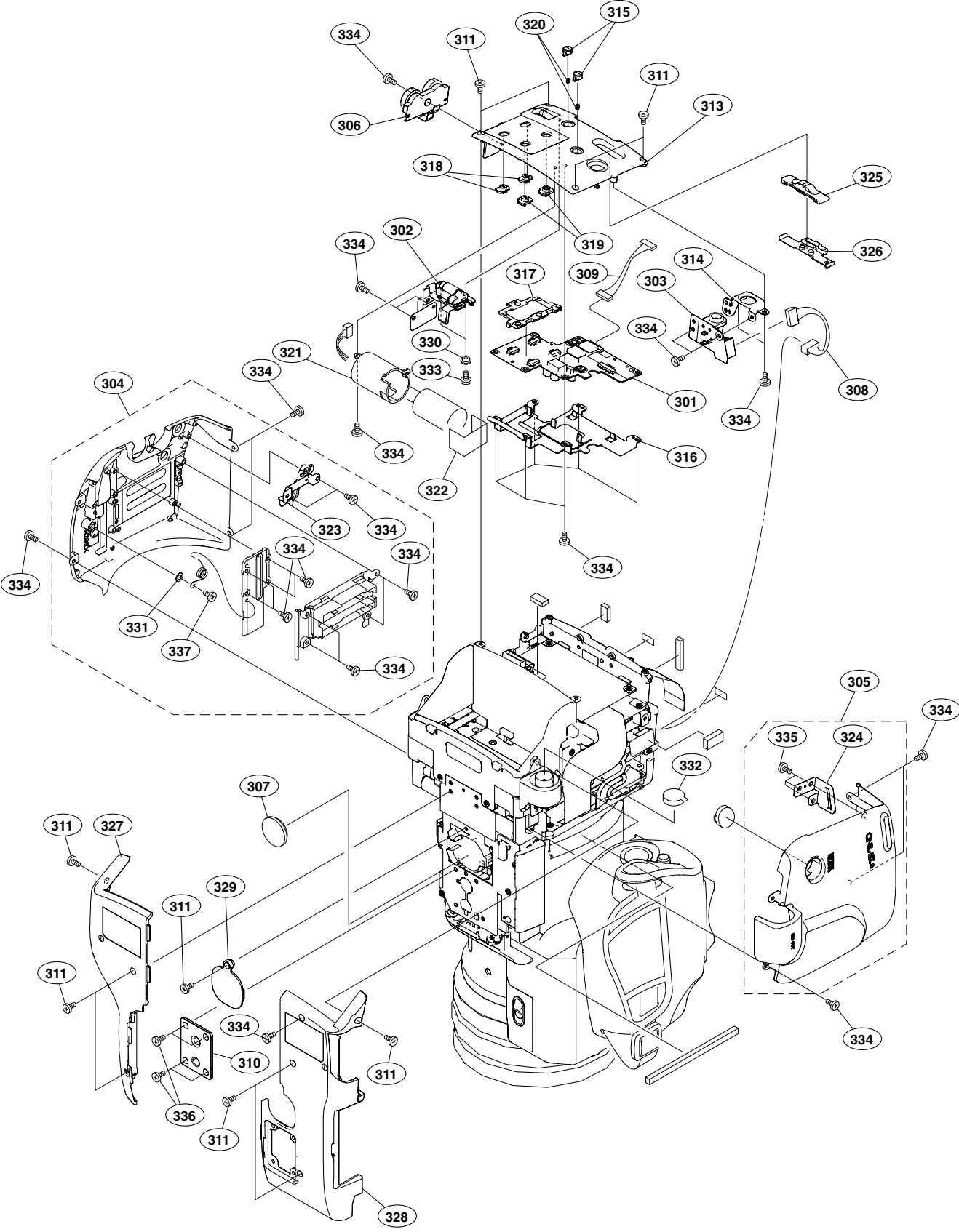
No.	Part No.	SP	Description
101	A-1363-025-A	s	MOUNTED CIRCUIT BOARD, AXM-35
102	A-1363-026-A	s	MOUNTED CIRCUIT BOARD, KSW-53
103	A-1363-027-A	s	MOUNTED CIRCUIT BOARD, DR-621
104	A-1363-029-A	s	MOUNTED CIRCUIT BOARD, LED-465
105	A-1363-030-A	s	MOUNTED CIRCUIT BOARD, HN-320
106	1-478-955-21	s	SWITCH BLOCK, CONTROL(ZS-5610)
107	1-825-968-11	s	LOUDSPEAKER (1.8CM)
108	1-965-718-11	s	HARNES, SUB (KSW53-DR621)
109	2-640-315-02	o	SCREW (M2X5), SMALL, +P, SW
110	3-080-203-31	s	SREW(M2), LOCK ACE, P2
111	3-080-206-21	s	SCREW, TAPPING, P2
112	3-276-443-01	s	SPEAKER CUSHION
113	3-276-875-02	s	HANDLE COVER LOW
114	3-276-876-01	s	SPEAKER GRILLE
115	3-276-877-01	s	DAMPER LCD
116	3-276-881-01	s	LCD SUPPORT
117	3-278-659-02	s	BRACKET, LED-465
118	3-278-663-01	s	KSW-53 BRACKET
119	3-278-664-01	s	BRACKET, DR-621
120	3-278-665-01	s	KNOB, XLR SW
121	3-278-667-02	s	HOLDER, SPEAKER
122	3-278-902-01	s	COVER (F HANDLE)
123	3-678-684-01	o	HOLDER, CABLE
124	3-688-754-11	s	SPRING
125	3-688-755-13	s	SHOE, ACCESSORY
126	3-724-182-01	s	NUT (SMALL JACK), M6
127	7-627-556-57	s	PRECISION SCREW +P 2.6X5 TYPE1
128	3-968-729-52	s	SCREW (M2), LOCK ACE, P2
129	3-282-659-01	s	SHEET, HANDLE REAR
130	3-278-666-02	s	RAIL, XLR SW
131	7-627-556-38	s	SCREW +P 2.6X4.0
132	3-452-727-01	s	SHEET, SPEAKER HOLDER
	7-685-792-09	s	SCREW +PTT 2.6X6 (S)

Handle Block 2



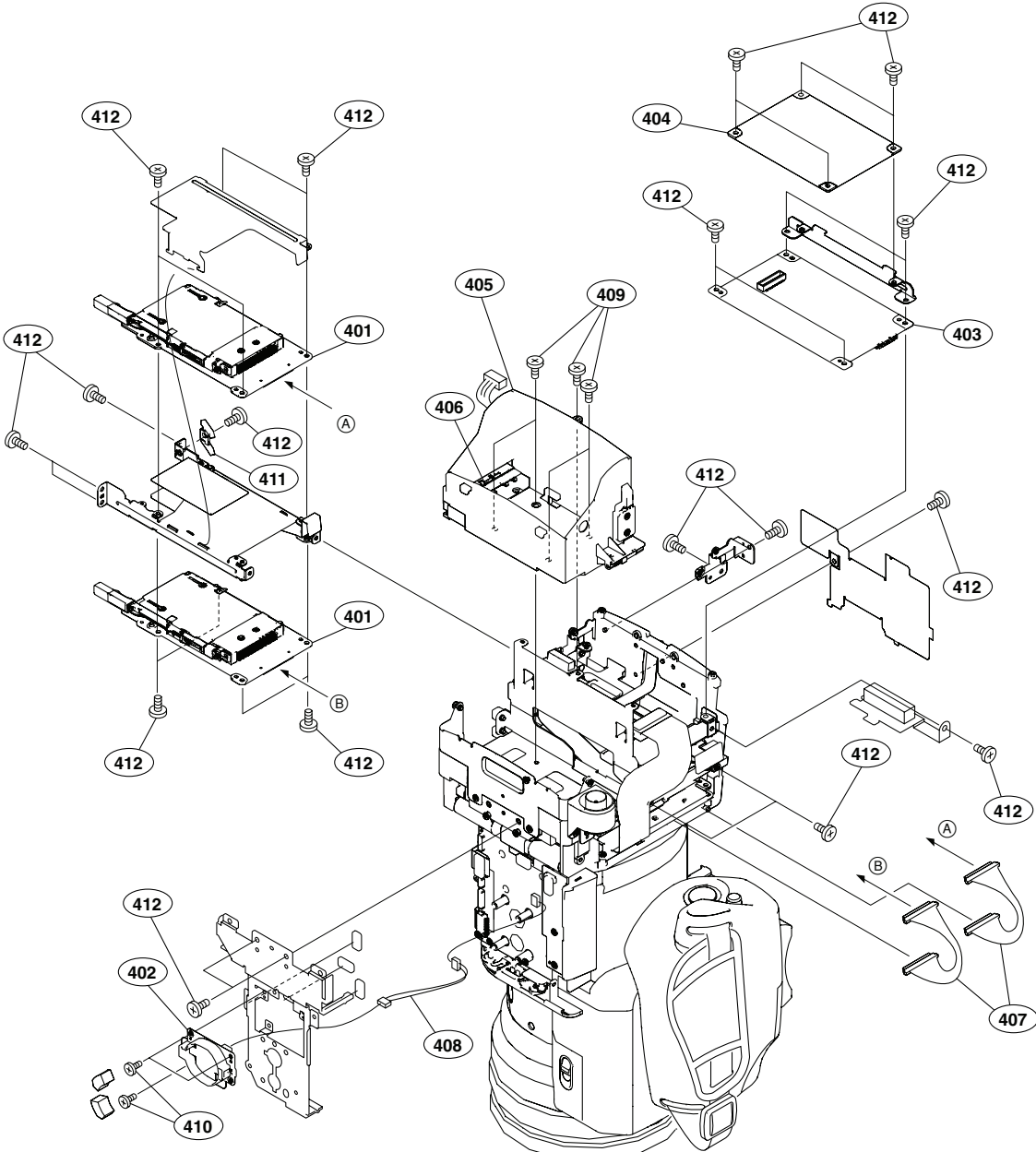
No.	Part No.	SP Description
201	A-1363-019-A	s MOUNTED CIRCUIT BOARD, MA-161
202	A-1363-022-A	s MOUNTED CIRCUIT BOARD, DET-44
203	A-1363-031-A	s MOUNTED CIRCUIT BOARD, RM-213
204	A-1363-183-A	s 3.5 INCH LCD ASSY
205	A-1376-954-A	s MICROPHONE UNIT ASSY
206	X-2187-184-1	s COVER ASSY, MICROPHONE
207	1-542-748-11	s MICROPHONE UNIT
208	1-965-709-21	s HARNESS (DPR-LCD)
209	1-965-715-11	s HARNESS, SUB (KSW53-DET44)
210	1-965-716-11	s HARNESS, SUB (KSW53-RM213)
211	1-965-717-11	s HARNESS, SUB (KSW53-MA161)
212	3-080-203-31	s SCREW(M2), LOCK ACE, P2
213	3-080-206-21	s SCREW, TAPPING, P2
214	3-086-368-31	s SCREW (M1.4), LOCK ACE P2
215	3-276-867-01	s PLATE, BLIND
216	3-276-871-01	s BEZEL LCD
217	3-276-872-01	s PACKING LCD
218	3-276-874-01	s HINGE COVER TOP
219	3-276-878-01	s LCD CABINET
220	3-278-656-02	s MIC SIDE GRILLE
221	3-278-657-01	s CASE, MICROPHONE
222	3-278-658-01	s HINGE COVER LOWER
223	3-278-660-01	s MIC CUSION(R)
224	3-278-661-01	s MIC CUSION(L)
225	3-278-662-01	s HANDLE (MAIN)
226	3-278-668-01	s HINGE
227	3-284-538-01	s SHIELD SHEET(MIC)
228	3-968-729-52	s SCREW (M2), LOCK ACE, P2
229	3-278-640-01	s SHEET PANEL BLIND

Rear, Inside, Outside Panel Block



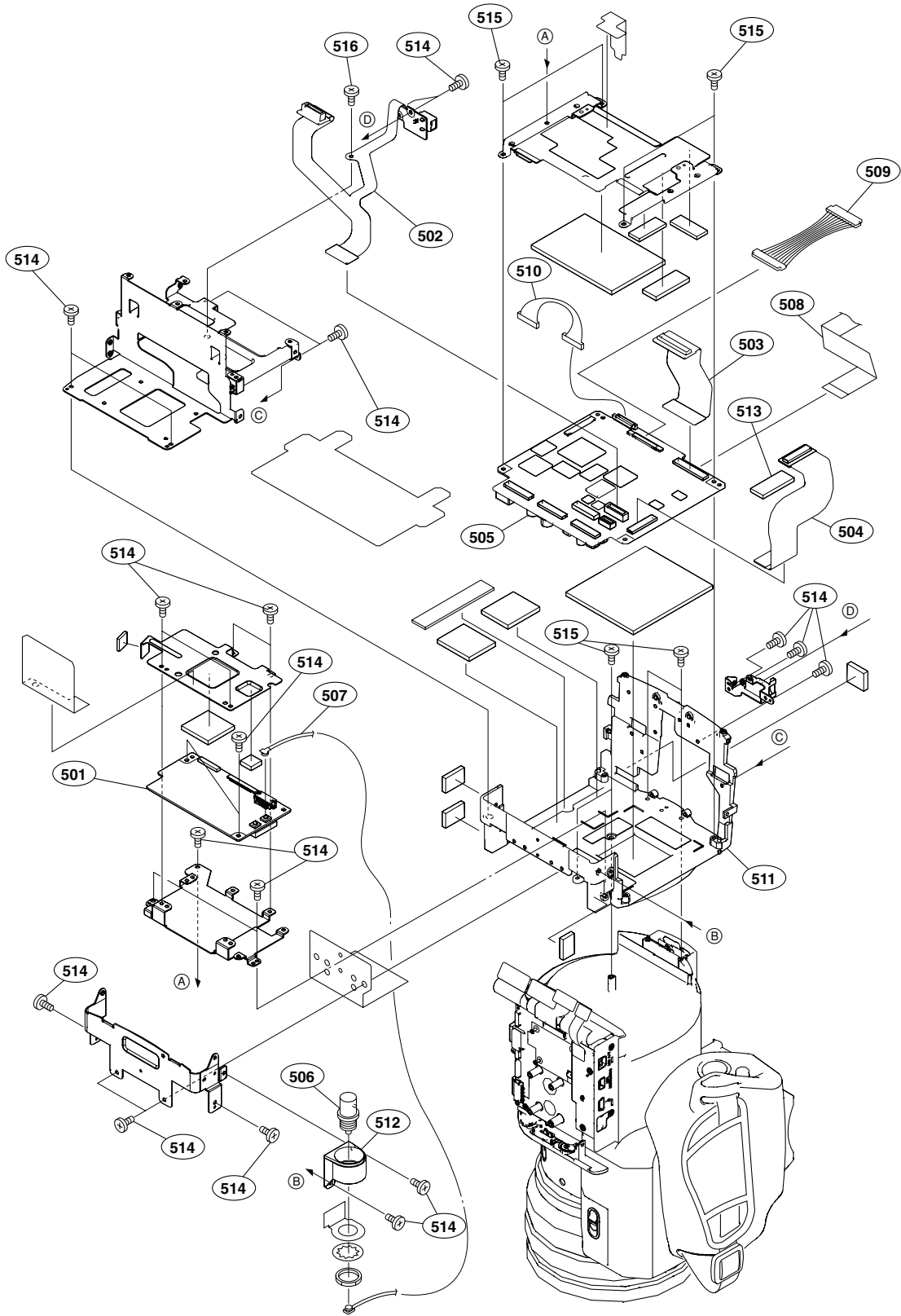
No.	Part No.	SP Description
301	A-1363-016-A	s MOUNTED CIRCUIT BOARD, ASW-65
302	A-1363-018-A	s MOUNTED CIRCUIT BOARD, SW-1397
303	A-1363-304-A	s MOUNTED CIRCUIT BOARD, DC-143
304	A-1376-923-A	s INSIDE PANEL ASSY
305	A-1376-924-A	s OUT SIDE PANEL ASSY
306	1-480-457-11	s BLOCK, AU VOLUME
307	△ 1-528-174-31	s BATTERY, LITHIUM (CR2032 TYPE)
308	1-965-712-11	s HARNESS, SUB (DC143-RE250)
309	1-965-714-11	s HARNESS, SUB (ASW65-LED465)
310	2-178-793-02	s BRACKET (TRIPOD)
311	3-080-203-31	s SREW(M2), LOCK ACE, P2
312	3-080-206-21	s SCREW, TAPPING, P2
313	3-278-307-01	s PANEL, REAR
314	3-278-308-01	s DC BRACKET JACK
315	3-278-309-01	s PUSH BUTTON REAR
316	3-278-310-01	s REAR PWD HOLDER PLATE
317	3-278-311-01	s SLIDE SW RAIL
318	3-278-312-01	s SLIDE SW REAR A
319	3-278-313-01	s SLIDE SW REAR B
320	3-278-314-01	s SPRING, COMPRESSION L2.5
321	3-278-315-01	s CAPACITOR BRACKET
322	3-278-316-01	s TAPE (C)
323	3-278-618-01	s PUSH BUTTON INSIDE
324	3-278-631-01	s BELT HOLDER PLATE
325	3-278-632-01	s POWER SW
326	3-278-633-01	s POWER SW SLIDE RAIL
327	3-278-649-02	s CASE (BOTTOM)L
328	3-278-650-02	s CASE (BOTTOM)R
329	3-278-651-01	s LID, LITHIUM BATTERY
330	3-285-186-01	s SW SPACER
331	3-701-439-01	s WASHER
332	3-285-384-01	s CUP BNC
333	3-729-013-61	s SCREW(M1.4X4.5), WASHERHEAD(+P)
334	3-968-729-52	s SCREW (M2), LOCK ACE, P2
335	4-644-493-11	s ACE (M2.6), LOCK
336	3-080-203-51	s SREW(M2), LOCK ACE, P2
337	4-644-492-21	s ACE (M2), LOCK

Main Frame 1



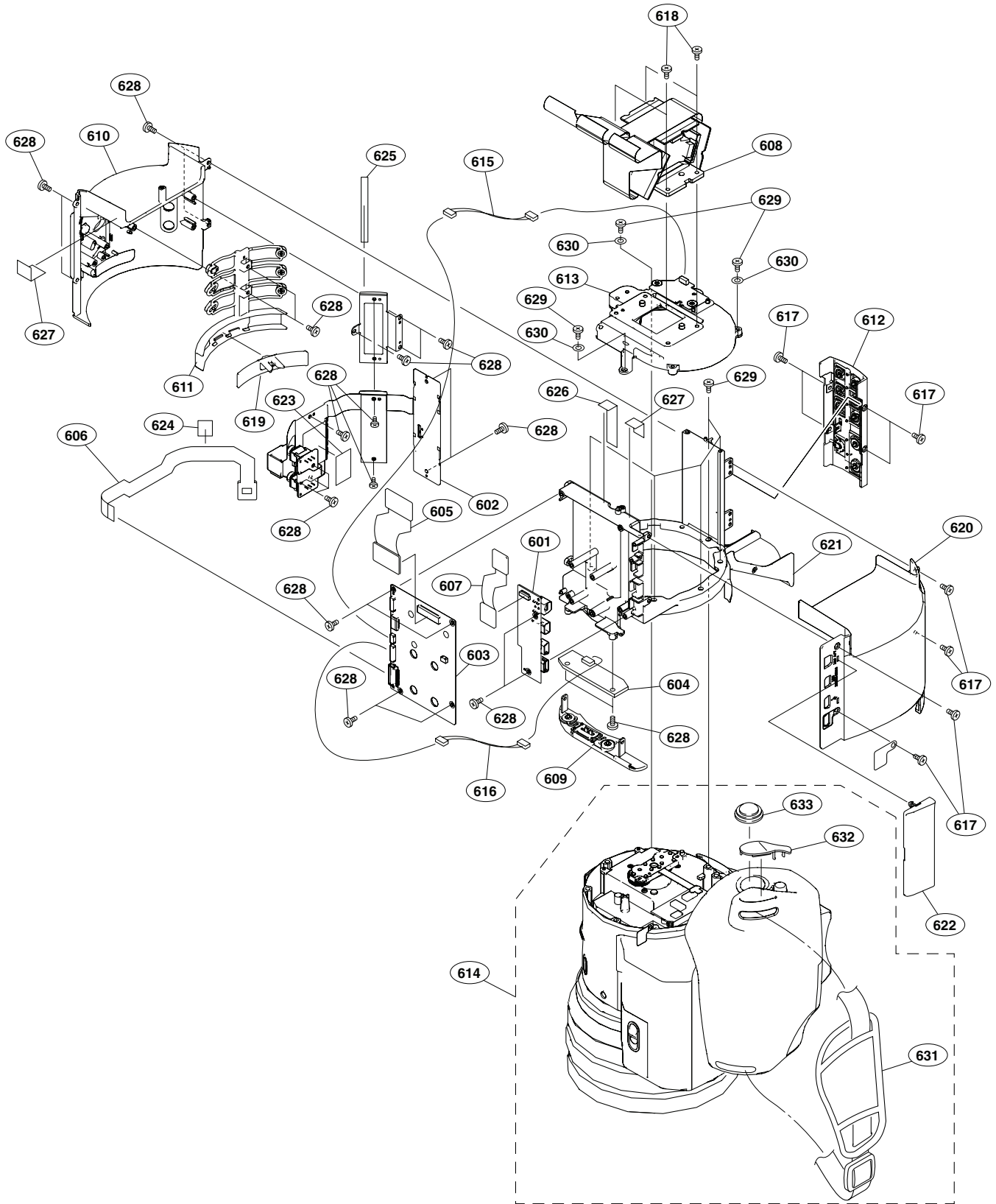
No.	Part No.	SP Description
401	A-1363-020-A	s MOUNTED CIRCUIT BOARD, EC-62
402	A-1363-309-A	s MOUNTED CIRCUIT BOARD, BP-43
403	A-1363-311-A	s MOUNTED CIRCUIT BOARD, RE-250
404	A-1363-312-A	s MOUNTED CIRCUIT BOARD, RE-251
405	A-1376-746-A	s BATTERY CASE ASSY
406	1-780-570-11	s TERMINAL BOARD, BATTERY
407	1-965-708-11	s HARNESS (DPR-EC)
408	1-965-720-11	s HARNESS, SUB (AU313-BP43)
409	3-080-203-31	s SCREW(M2), LOCK ACE, P2
410	3-086-368-31	s SCREW (M1.4), LOCK ACE P2
411	3-278-741-02	s EC-62 LED LENS
412	3-968-729-52	s SCREW (M2), LOCK ACE, P2

Main Frame 2

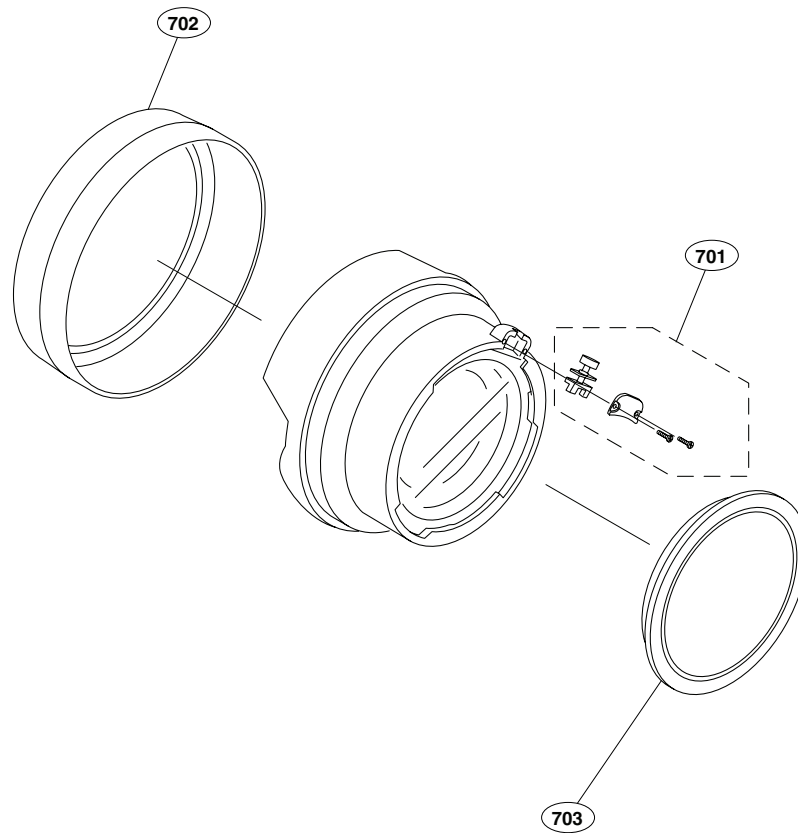


No.	Part No.	SP Description
501	A-1363-024-A	s MOUNTED CIRCUIT BOARD, TX-115
502	A-1363-306-A	s MOUNTED CIRCUIT BOARD, HN-319
503	A-1363-307-A	s MOUNTED CIRCUIT BOARD, CN-3006
504	A-1363-308-A	s MOUNTED CIRCUIT BOARD, CN-3007
505	A-1363-310-B	s MOUNTED CIRCUIT BOARD, DPR-289
506	1-784-240-11	s CONVERTER, COAXIAL CONNECTOR
507	1-832-333-11	s CABLE ASSEMBLY, COAXIAL
508	1-834-584-11	s CABLE, FLEXIBLE FLAT (30 CORE)
509	1-965-710-11	s HARNESS (DPR-TX)
510	1-965-719-11	s HARNESS, SUB (DPR289-TX115)
511	3-278-726-01	s MAIN FRAME REAR
512	3-278-727-01	s BNC COVER
513	3-286-759-01	s CUSHION CN3007
514	3-968-729-52	s SCREW (M2), LOCK ACE, P2
515	3-056-233-21	s SCREW (M2), LOCK ACE, P2
516	3-080-203-01	s SCREW(M2),LOCK ACE,P2

Front Block



No.	Part No.	SP Description
601	A-1363-014-A	s MOUNTED CIRCUIT BOARD, JK-77
602	A-1363-015-A	s MOUNTED CIRCUIT BOARD, SWC-47
603	A-1363-017-A	s MOUNTED CIRCUIT BOARD, AU-313
604	A-1363-021-A	s MOUNTED CIRCUIT BOARD, SW-1375
605	A-1363-023-A	s MOUNTED CIRCUIT BOARD, HN-318
606	A-1363-032-A	s MOUNTED CIRCUIT BOARD, HN-338
607	A-1363-033-A	s MOUNTED CIRCUIT BOARD, HN-339
608	A-1539-606-A	s UNIT, PRISM BLOCK
609	X-2187-350-1	s PANEL ASSY, FRONT
610	X-2187-375-1	s CASE L ASSY
611	X-2187-376-1	s BOTTON CASEL ASSY
612	X-2187-377-1	s COVER (CENTER) ASSY
613	1-788-703-11	s ND FILTER, OPTICAL
614	A-1539-605-A	s UNIT, LENS
615	1-965-711-11	s HARNESS, SUB (SE912-AU313)
616	1-965-713-11	s HARNESS, SUB (AU313-SW1375)
617	3-080-203-31	s SREW(M2), LOCK ACE, P2
618	3-080-206-21	s SCREW, TAPPING, P2
619	3-278-756-02	s BUTTON (ND)
620	3-278-757-01	s CASE (R)
621	3-278-758-01	s FRONT FRAME
622	3-278-764-01	s COVER, CONNECTOR
623	3-281-730-01	s SWC-47 ADHESIVE SHEET
624	3-281-751-01	s SHEET, HN-338 ADHESIVE
625	3-284-472-01	s CUSHION, ASSIGN
626	3-285-955-01	s CMOS PROTECTION SHEET A
627	3-285-956-01	s CMOS PROTECTION SHEET B
628	3-968-729-52	s SCREW (M2), LOCK ACE, P2
629	7-627-556-57	s PRECISION SCREW +P 2.6X5 TYPE1
630	3-294-691-01	s WASHER
631	3-452-468-01	s BELT, GRIP
632	3-875-399-01	s LID, REAR
633	3-875-400-01	s CAP



No.	Part No.	SP Description
701	A-1538-803-A	s FIXING SCREW ASSY
702	3-287-626-01	s CAP LENS (F)
703	3-287-627-01	s CAP LENS (R)

(TX-115 BOARD)

Ref. No. or Q'ty	Part No.	SP	Description
R311	1-208-887-81	s	RES, CHIP 1.0K (1005)
R312	1-218-990-81	s	CONDUCTOR, CHIP (1005)
R316	1-208-887-81	s	RES, CHIP 1.0K (1005)
R319	1-208-919-81	s	RES, CHIP 22K (1005)
R320	1-208-919-81	s	RES, CHIP 22K (1005)
R321	1-208-959-81	s	RES, CHIP 1M (1005)
R322	1-208-911-81	s	RES, CHIP 10K (1005)
R325	1-208-887-81	s	RES, CHIP 1.0K (1005)
R327	1-208-911-81	s	RES, CHIP 10K (1005)
R328	1-208-911-81	s	RES, CHIP 10K (1005)
R330	1-208-903-81	s	RES, CHIP 4.7K (1005)
R331	1-208-903-81	s	RES, CHIP 4.7K (1005)
R335	1-220-878-81	s	RES, CHIP 22 (1005)
R337	1-220-870-81	s	RES, CHIP 10 (1005)
R342	1-208-919-81	s	RES, CHIP 22K (1005)
R343	1-208-919-81	s	RES, CHIP 22K (1005)
R344	1-208-959-81	s	RES, CHIP 1M (1005)
R348	1-220-878-81	s	RES, CHIP 22 (1005)
R349	1-208-935-81	s	RES, CHIP 100K (1005)
R600	1-208-935-81	s	RES, CHIP 100K (1005)
R601	1-218-990-81	s	CONDUCTOR, CHIP (1005)
R602	1-218-990-81	s	CONDUCTOR, CHIP (1005)
R603	1-218-990-81	s	CONDUCTOR, CHIP (1005)
R604	1-218-990-81	s	CONDUCTOR, CHIP (1005)
R607	1-208-903-81	s	RES, CHIP 4.7K (1005)
R608	1-208-903-81	s	RES, CHIP 4.7K (1005)
R609	1-220-870-81	s	RES, CHIP 10 (1005)
R610	1-208-863-81	s	RES, CHIP 100 (1005)
R611	1-220-870-81	s	RES, CHIP 10 (1005)
R620	1-218-990-81	s	CONDUCTOR, CHIP (1005)
R643	1-208-903-81	s	RES, CHIP 4.7K (1005)
R649	1-218-990-81	s	CONDUCTOR, CHIP (1005)
R650	1-218-990-81	s	CONDUCTOR, CHIP (1005)
R651	1-218-990-81	s	CONDUCTOR, CHIP (1005)
R652	1-218-990-81	s	CONDUCTOR, CHIP (1005)
R653	1-218-990-81	s	CONDUCTOR, CHIP (1005)
R654	1-218-990-81	s	CONDUCTOR, CHIP (1005)
R655	1-218-990-81	s	CONDUCTOR, CHIP (1005)
R656	1-218-990-81	s	CONDUCTOR, CHIP (1005)
R657	1-218-990-81	s	CONDUCTOR, CHIP (1005)
R658	1-218-990-81	s	CONDUCTOR, CHIP (1005)
R659	1-218-990-81	s	CONDUCTOR, CHIP (1005)
R660	1-218-990-81	s	CONDUCTOR, CHIP (1005)
R661	1-218-990-81	s	CONDUCTOR, CHIP (1005)
R700	1-218-990-81	s	CONDUCTOR, CHIP (1005)
R701	1-218-990-81	s	CONDUCTOR, CHIP (1005)
R703	1-218-990-81	s	CONDUCTOR, CHIP (1005)
R705	1-218-990-81	s	CONDUCTOR, CHIP (1005)
R706	1-218-990-81	s	CONDUCTOR, CHIP (1005)
R707	1-208-951-81	s	RES, CHIP 470K (1005)
R709	1-208-939-81	s	RES, CHIP 150K (1005)
R710	1-208-955-81	s	RES, CHIP 680K (1005)
R711	1-218-990-81	s	CONDUCTOR, CHIP (1005)
R712	1-208-955-81	s	RES, CHIP 680K (1005)
R713	1-218-990-81	s	CONDUCTOR, CHIP (1005)
R714	1-208-951-81	s	RES, CHIP 470K (1005)
R715	1-208-911-81	s	RES, CHIP 10K (1005)
R719	1-208-935-81	s	RES, CHIP 100K (1005)
R720	1-218-990-81	s	CONDUCTOR, CHIP (1005)

(TX-115 BOARD)

Ref. No. or Q'ty	Part No.	SP	Description
RB600	1-234-375-21	s	RES, NETWORK 1K (1005X4)
X300	1-795-670-12	s	OSCILLATOR, CRYSTAL (VCXO)3.3V
X301	1-795-671-12	s	OSCILLATOR, CRYSTAL (VCXO)3.3V

5-4. Supplied Accessories

SUPPLIED ACCESSORIES

Ref. No. or Q'ty	Part No.	SP	Description
1pc	1-479-570-13	s	REMOTE COMMANDER (RM-F300)
1pc	Δ 1-757-562-11	s	CORD, POWER (UC)
1pc	Δ 1-782-476-13	s	CORD, POWER (CN)
1pc	1-828-544-12	s	CORD, CONNECTION (USB)
1pc	1-829-414-22	s	CABLE, CONNECTION (COMPONENT)
1pc	1-831-553-21	Y	CORD, CONNECTION (AV MULTIPLE)
1pc	3-278-903-01	s	SHORUDER BELT
1pc	Δ 3-278-905-01	s	MANUAL, INSTRUCTION (J)
1pc	Δ 3-278-905-11	s	MANUAL, INSTRUCTION (UC)
1pc	Δ 3-278-905-21	s	MANUAL, INSTRUCTION (CN)
1pc	Δ 3-278-906-01	s	CD-ROM

Viditec

Humberto 1° 2889 - C1231ACE - Bs As, Argentina
 Tel: +54 11 4122-1200 Fax: +54 11 4308-5493
 ingenieria@viditec.com.ar
 viditec.com