

SONY[®]

SOLID-STATE MEMORY CAMCORDER

PMW-EX3

XDCMEX **SXS** **i**

CINEALTA *Exmor*[™]
CMOS Sensor

SERVICE MANUAL

1st Edition

Section 4

Spare Parts

4-1. Notes on Repair Parts

1. Safety Related Components Warning

WARNING

Components marked △ are critical to safe operation. Therefore, specified parts should be used in the case of replacement.

2. Standardization of Parts

Some repair parts supplied by Sony differ from those used for the unit. These are because of parts commonality and improvement.

3. Stock of Parts

Parts marked with “o” at SP (Supply Code) column of the spare parts list may not be stocked. Therefore, the delivery date will be delayed.

4. Harness

Harnesses with no part number are not registered as spare parts.

4-1. 補修部品注意事項

1. 安全重要部品

△警告

△印のついた部品は安全性を維持するために重要な部品です。したがって、交換する時は必ず指定の部品を使ってください。

2. 部品の共通化

ソニーから供給する補修用部品は、セットに使われているものと異なることがあります。これは部品の共通化、改良等によるものです。

3. 部品の在庫

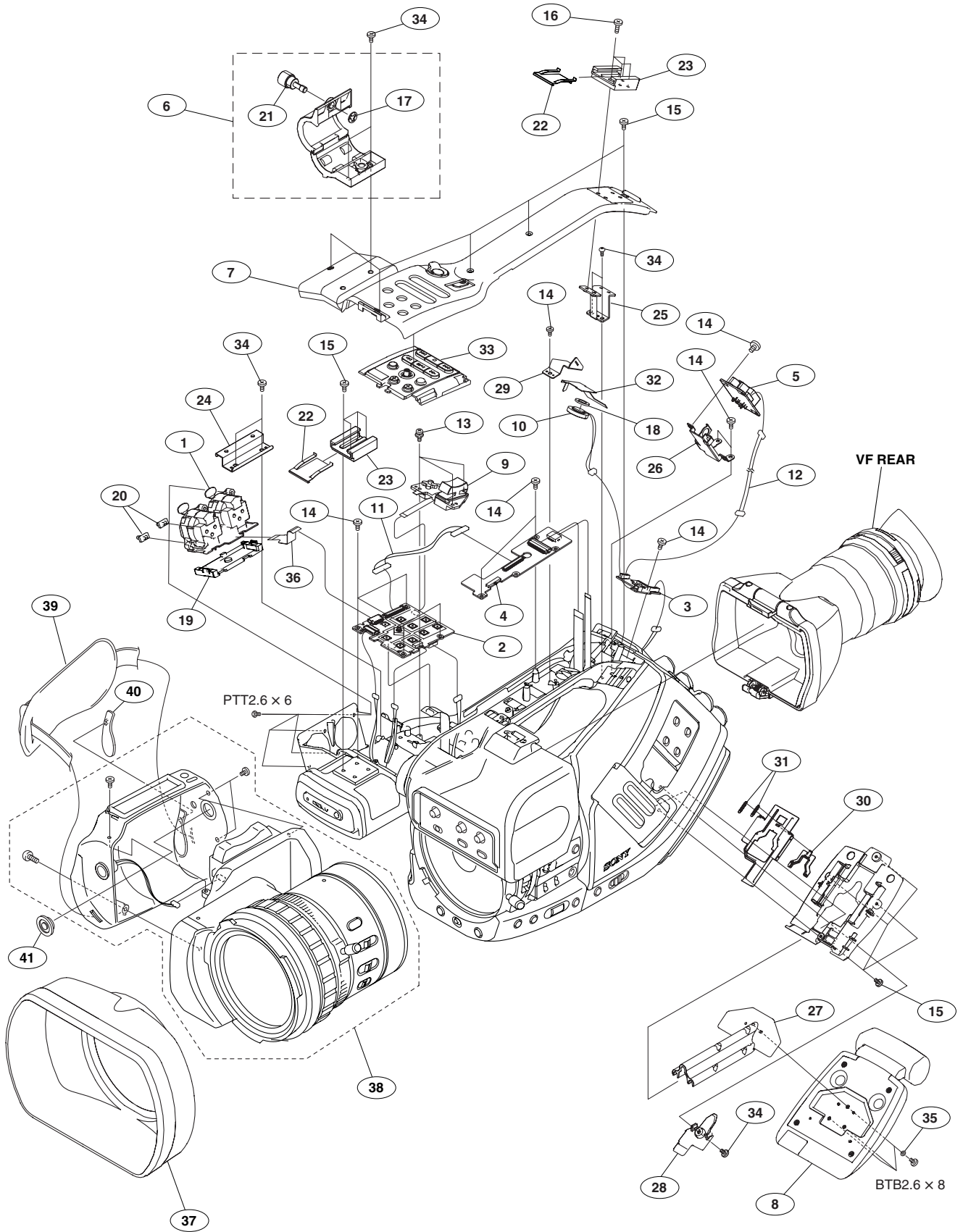
部品表のSP (Supply code) 欄に“o”で示される部品は在庫していないことがあり、納期が長くなることがあります。

4. ハーネス

部品番号が記載されていないハーネスは、サービス部品として登録されていません。

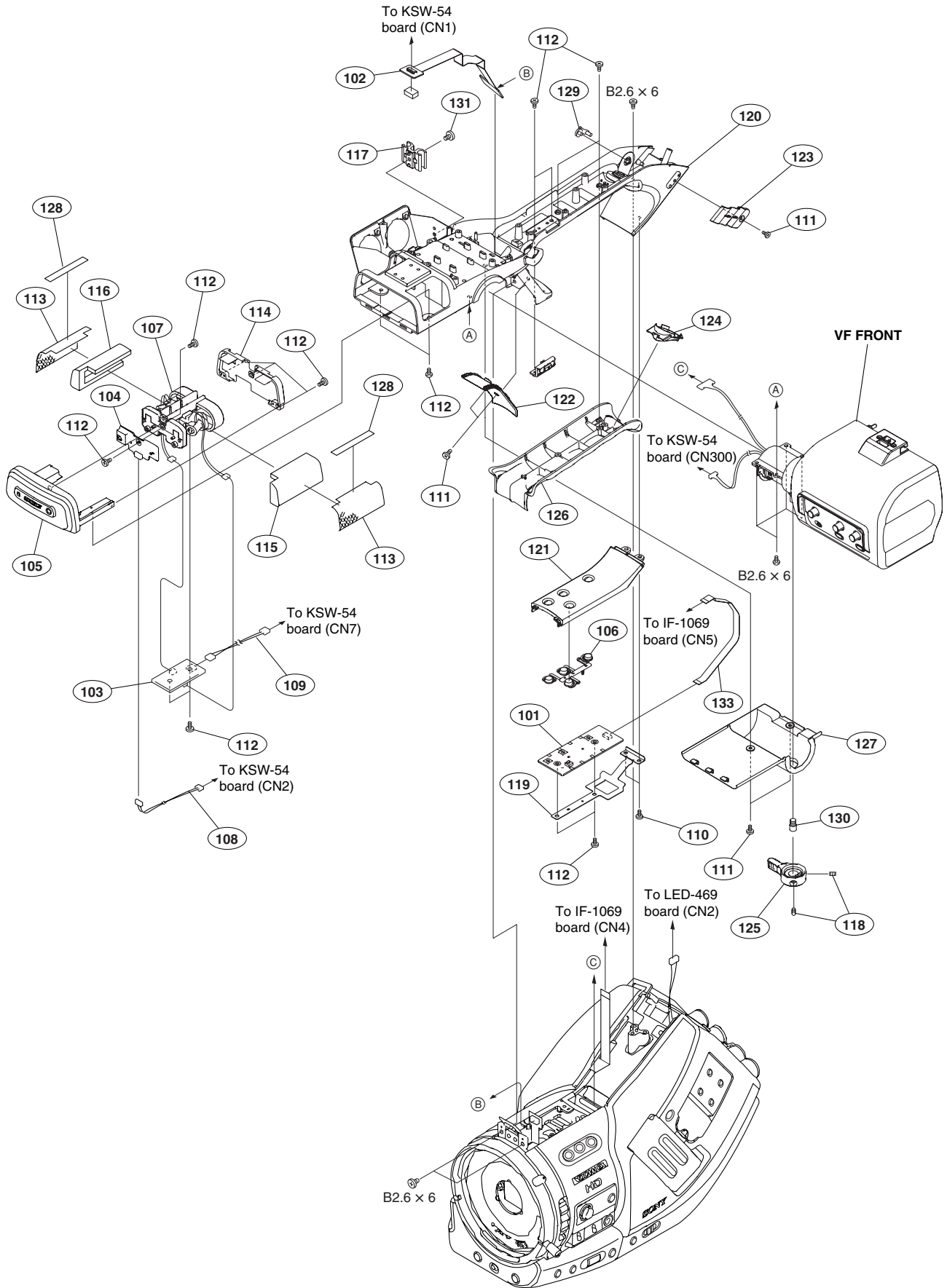
Handle Block 1

4-2. Exploded Views



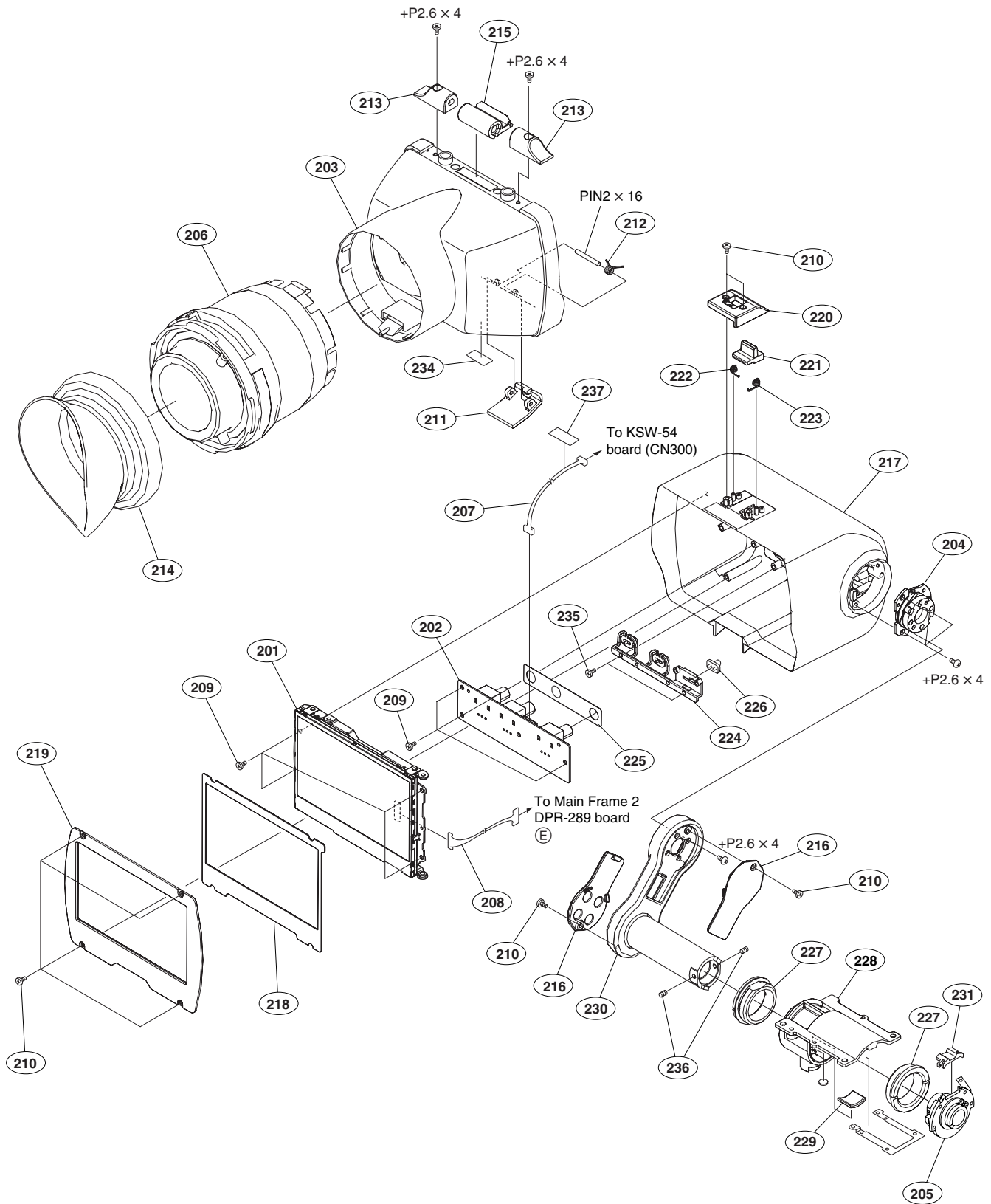
| No. | Part No. | SP Description |
|-----|--------------|-----------------------------------|
| 1 | A-1545-701-A | s MOUNTED CIRCUIT BOARD, AXM-36 |
| 2 | A-1545-702-A | s MOUNTED CIRCUIT BOARD, KSW-54 |
| 3 | A-1545-707-A | s MOUNTED CIRCUIT BOARD, LED-469 |
| 4 | A-1545-709-A | s MOUNTED CIRCUIT BOARD, IF-1069 |
| 5 | A-1545-799-A | s MOUNTED CIRCUIT BOARD, HP-144 |
| 6 | X-2187-352-1 | s MICROPHONE HOLDER ASSY |
| 7 | X-2318-445-2 | s TOP COVER ASSY, HANDLE |
| 8 | X-2318-450-1 | s PAD SUB ASSY |
| 9 | 1-478-955-21 | s SWITCH BLOCK, CONTROL (ZS-5610) |
| 10 | 1-825-968-11 | s LOUDSPEAKER (1.8CM) |
| 11 | 1-966-163-11 | s HARNESS, SUB (KSW54-IF1069) |
| 12 | 1-966-170-11 | s HARNESS, SUB (8PIN) |
| 13 | 2-640-315-02 | o SCREW (M2X5), SMALL, +P, SW |
| 14 | 3-056-233-21 | s SCREW (M2), LOCK ACE, P2 |
| 15 | 3-080-203-31 | s SREW(M2),LOCK ACE, P2 |
| 16 | 3-080-203-51 | s SREW(M2),LOCK ACE, P2 |
| 17 | 3-165-904-01 | s WASHER, SCREW STOPPER |
| 18 | 3-276-443-11 | s SPEAKER CUSHION |
| 19 | 3-278-666-02 | s RAIL, XLR SW |
| 20 | 3-295-151-01 | s XLR SW KNOB 2 |
| 21 | 3-657-657-02 | s SCREW (M5) |
| 22 | 3-688-754-11 | s SPRING |
| 23 | 3-688-755-13 | s SHOE, ACCESSORY |
| 24 | 3-876-723-01 | s BRACKET,OUT MICROPHONE |
| 25 | 3-876-730-01 | s BRACKET, REAR SHOE |
| 26 | 3-876-731-01 | s BRACKET, HP |
| 27 | 3-876-782-02 | s SHAFT PAD |
| 28 | 3-876-783-01 | s COVER,PAD CENTER |
| 29 | 3-878-244-01 | s BRACKET, SPEAKER |
| 30 | 3-878-246-01 | s COVER, PAD STOPPER |
| 31 | 3-878-248-01 | s SPRING PAD |
| 32 | 3-878-252-01 | s HARNESS COVER, HANDLE REAR |
| 33 | 3-878-256-02 | s RUBBER SW KEY |
| 34 | 4-673-655-01 | s SCREW +B |
| 35 | 3-654-058-12 | s SPACER (3X2) |
| 36 | 1-877-244-11 | s PRINTED WIRING BOARD, HN-349 |
| 37 | 4-110-064-01 | s HOOD, LENS |
| 38 | 1-788-858-11 | s LENS, ZOOM (VCL-614B2X) |
| 39 | 3-452-468-01 | s BELT, GRIP |
| 40 | 3-875-399-01 | s LID, REAR |
| 41 | 3-875-400-01 | s CAP |
| | 7-685-534-19 | s SCREW +BTP 2.6X8 TYPE2 N-S |
| | 7-685-792-09 | s SCREW +PTT 2.6X6 (S) |

Handle Block 2



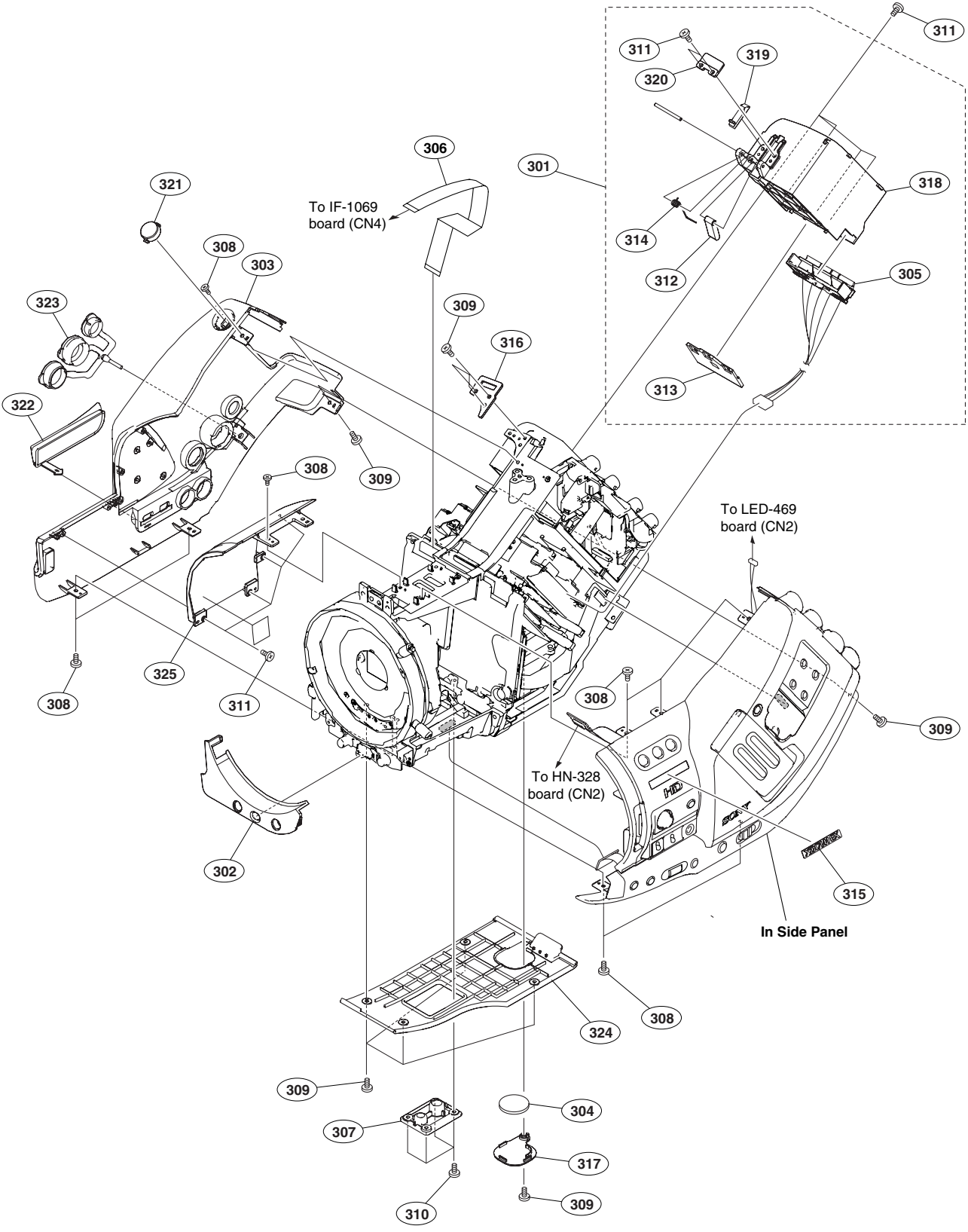
| No. | Part No. | SP Description |
|-----|--------------|---------------------------------|
| 101 | A-1545-706-A | s MOUNTED CIRCUIT BOARD, SWC-49 |
| 102 | A-1545-708-A | s MOUNTED CIRCUIT BOARD, HN-328 |
| 103 | A-1545-710-A | s MOUNTED CIRCUIT BOARD, MA-164 |
| 104 | A-1545-711-A | s MOUNTED CIRCUIT BOARD, RM-214 |
| 105 | X-2318-443-2 | s COVER ASSY, MICROPHONE |
| 106 | X-2318-444-1 | s KEY TOP (TOP PANEL) ASSY |
| 107 | 1-542-748-11 | s MICROPHONE UNIT |
| 108 | 1-966-160-11 | s HARNESS, SUB (KSW54-RM214) |
| 109 | 1-966-161-11 | s HARNESS, SUB (KSW54-MA164) |
| 110 | 3-056-233-21 | s SCREW (M2), LOCK ACE, P2 |
| 111 | 3-080-203-31 | s SREW(M2), LOCK ACE, P2 |
| 112 | 3-080-206-21 | s SCREW, TAPPING, P2 |
| 113 | 3-278-656-02 | s MIC SIDE GRILLE |
| 114 | 3-278-657-01 | s CASE, MICROPHONE |
| 115 | 3-278-660-01 | s MIC CUSION (R) |
| 116 | 3-278-661-01 | s MIC CUSION (L) |
| 117 | 3-679-659-05 | s CLAMP, CABLE |
| 118 | 3-701-505-01 | s SET SCREW, DOUBLE POINT 3X3 |
| 119 | 3-876-724-01 | s BRACKET, TOP PANEL EARTH |
| 120 | 3-876-775-01 | s FRAME, HANDLE MAIN |
| 121 | 3-876-776-01 | s COVER, TOP PANEL |
| 122 | 3-876-779-01 | s HANDLE, FRONT COVER |
| 123 | 3-876-880-02 | s CLAMP (REAR), CABLE |
| 124 | 3-876-881-01 | s CASE, SPEAKER |
| 125 | 3-878-238-01 | s LOCK LEVER (SLIDE) |
| 126 | 3-878-243-01 | s HANDLE, GRIP COVER |
| 127 | 3-878-245-01 | s COVER, BOTTOM, FRONT |
| 128 | 3-878-250-02 | s SHIELD SHEET (MIC) |
| 129 | 3-878-251-02 | s COVER (HP), CONNECTOR |
| 130 | 3-878-269-02 | s LOCK, SCREW |
| 131 | 4-641-726-13 | s SCREW (M2), SPECIAL HEAD |
| 133 | 1-887-248-11 | s PRINTED WIRING BOARD, HN-348 |
| | 7-621-770-67 | s SCREW +B 2.6X6 |

VF Front and VF Rear



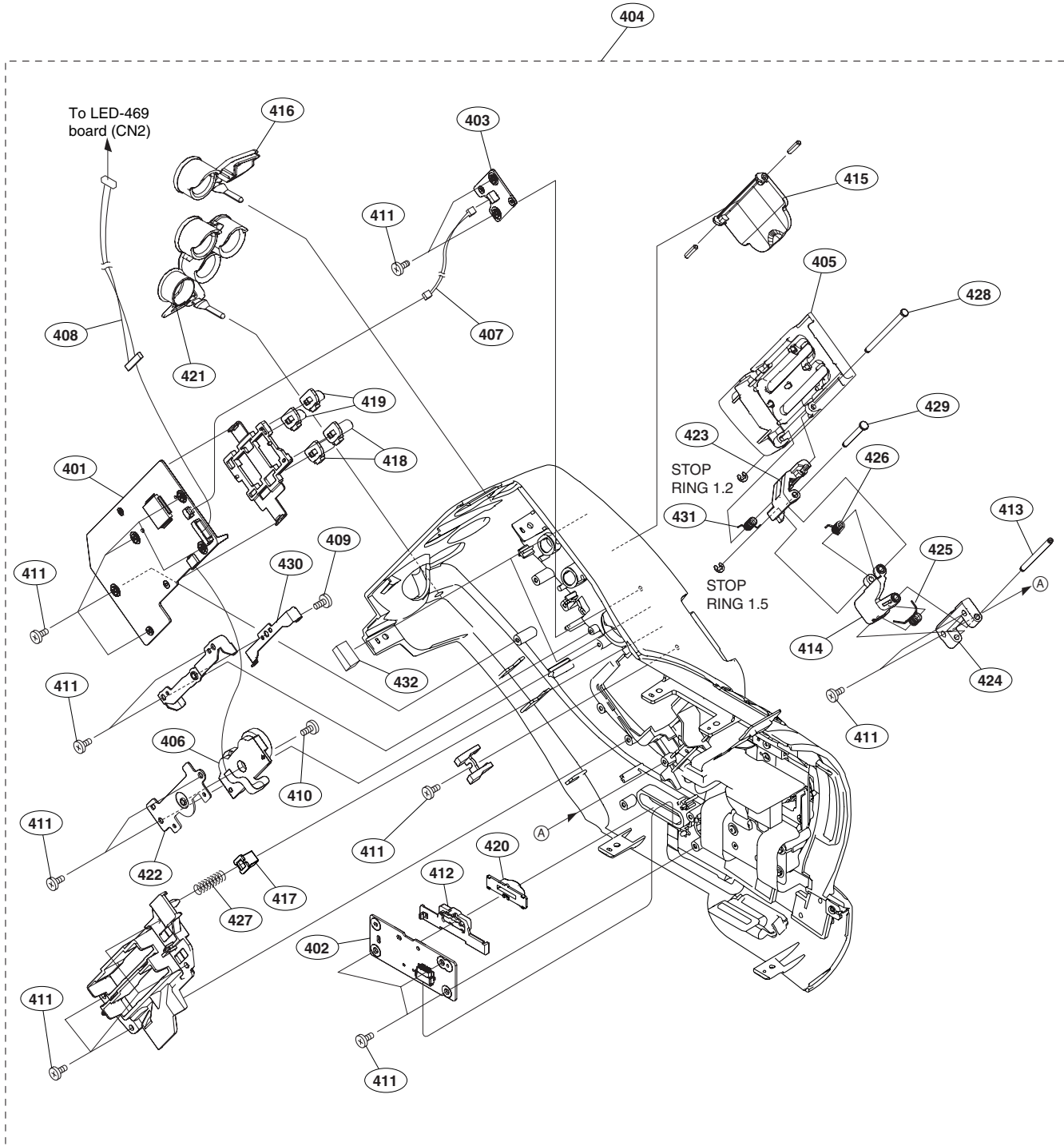
| No. | Part No. | SP Description |
|-----|--------------|---------------------------------|
| 201 | A-1363-183-B | s 3.5 INCH LCD ASSY |
| 202 | A-1545-705-A | s MOUNTED CIRCUIT BOARD, CT-251 |
| 203 | X-2318-436-1 | s BOX ASSY, REAR |
| 204 | X-2318-442-1 | s HINGE ASSY |
| 205 | X-2318-448-2 | s SLIDE ASSY, ROTARY |
| 206 | 1-788-766-11 | s LOUPE, VF |
| 207 | 1-966-171-11 | s HARNESS, SUB (KSW54-CT251) |
| 208 | 1-966-192-11 | s HARNESS (DPR-LCD) |
| 209 | 3-056-233-21 | s SCREW (M2), LOCK ACE, P2 |
| 210 | 3-080-203-31 | s SREW(M2), LOCK ACE,P2 |
| 211 | 3-878-205-01 | s LEVER (REAR BOX) |
| 212 | 3-878-206-02 | s SPRING, TORSION COIL |
| 213 | 3-878-207-01 | s BLOCK, SHAFT FIXED |
| 214 | 3-878-208-01 | s EYE CUP |
| 215 | 3-878-209-02 | s HINGE, SWITCHING |
| 216 | 3-878-226-01 | s COVER, ARM |
| 217 | 3-878-227-01 | s BOX, FRONT |
| 218 | 3-878-228-01 | s COVER LCD |
| 219 | 3-878-229-01 | s PLATE, DISPLAY |
| 220 | 3-878-230-01 | s GUIDE, SLIDE |
| 221 | 3-878-231-01 | s SW SLIDE |
| 222 | 3-878-232-01 | s SPRING (A90), TORSION COIL |
| 223 | 3-878-233-01 | s SPRING (A-70), TORSION COIL |
| 224 | 3-878-234-01 | s SWITCH, VF |
| 225 | 3-878-235-01 | s PLATE, BLIND |
| 226 | 3-878-236-01 | s SWITCH (IMAGE), SLIDE |
| 227 | 3-878-267-01 | s REST, ARM |
| 228 | 3-878-268-01 | s TABLE, FIXED,VF SLIDE |
| 229 | 3-878-270-02 | s CUSION, STOPPER |
| 230 | 3-878-271-02 | s ARM |
| 231 | 3-878-272-01 | s GUIDE |
| 234 | 4-109-147-01 | s LABEL, CAUTION |
| 235 | 4-641-726-13 | s SCREW (M2), SPECIAL HEAD |
| 236 | 3-701-505-01 | s SET SCREW, DOUBLE POINT 3X3 |
| 237 | 4-108-765-01 | s TAPE 25 |
| | 7-621-284-00 | s SCREW +P 2.6X4 |
| | 7-626-314-31 | s SPRING PIN 2X16 |

Outside Panel and Battery



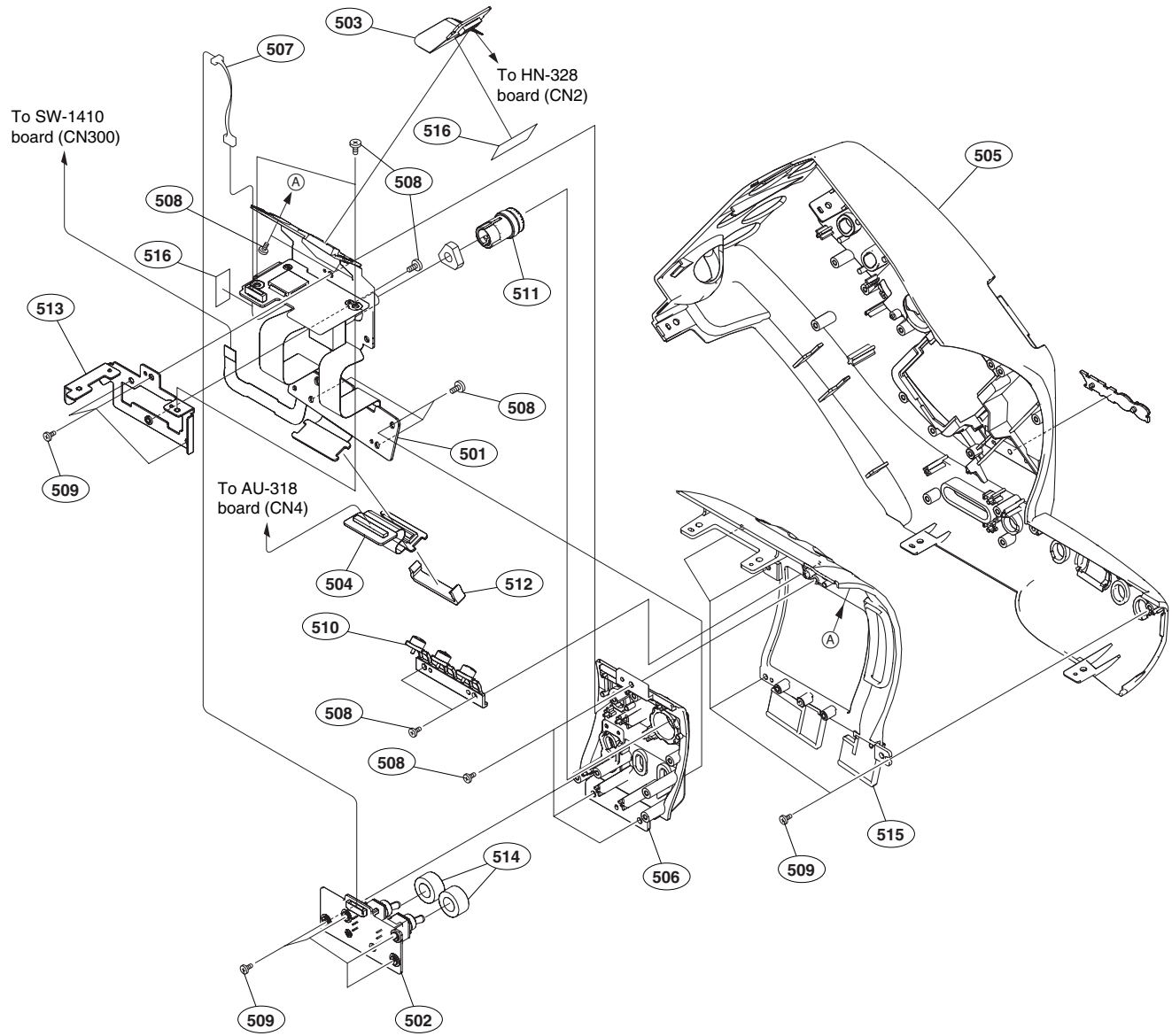
| No. | Part No. | SP Description |
|-----|----------------|----------------------------------|
| 301 | A-1548-381-A | s CASE ASSY, BATTERY |
| 302 | X-2318-447-2 | s PANEL ASSY, FRONT |
| 303 | X-2318-473-3 | s PANEL SUB ASSY, OUTSIDE |
| 304 | △ 1-528-174-31 | s BATTERY, LITHIUM (CR2032 TYPE) |
| 305 | 1-780-570-21 | s TERMINAL BOARD, BATTERY |
| 306 | 1-834-584-11 | s CABLE, FLEXIBLE FLAT (30 CORE) |
| 307 | 2-178-793-02 | s BRACKET (TRIPOD) |
| 308 | 3-056-233-21 | s SCREW (M2), LOCK ACE, P2 |
| 309 | 3-080-203-31 | s SREW(M2), LOCK ACE, P2 |
| 310 | 3-080-203-51 | s SREW(M2), LOCK ACE, P2 |
| 311 | 3-080-206-21 | s SCREW, TAPPING, P2 |
| 312 | 3-278-250-01 | s LOCK LEVER BT |
| 313 | 3-278-253-01 | s CONNECTOR BRACKET |
| 314 | 3-278-256-01 | s SPRING, TORSION (BT) |
| 315 | 3-278-644-01 | s XDCAM EMBLEM |
| 316 | 3-876-729-01 | s BRACKET, SHOULDER |
| 317 | 3-876-773-01 | s LID, BUTTON BATTERY |
| 318 | 3-876-774-01 | s CASE BATTERY |
| 319 | 3-876-777-01 | s LEVER EJECT |
| 320 | 3-876-778-01 | s COVER, LEVER EJECT |
| 321 | 3-876-781-01 | s SW EJECT |
| 322 | 3-877-746-02 | s COVER, CONNECTOR (1) |
| 323 | 3-877-980-01 | s COVER, CONNECTOR (2) |
| 324 | 3-878-253-02 | s PANEL, BOTTOM |
| 325 | 3-878-538-01 | s PANEL (1), OUT SIDE |

Inside Panel 1



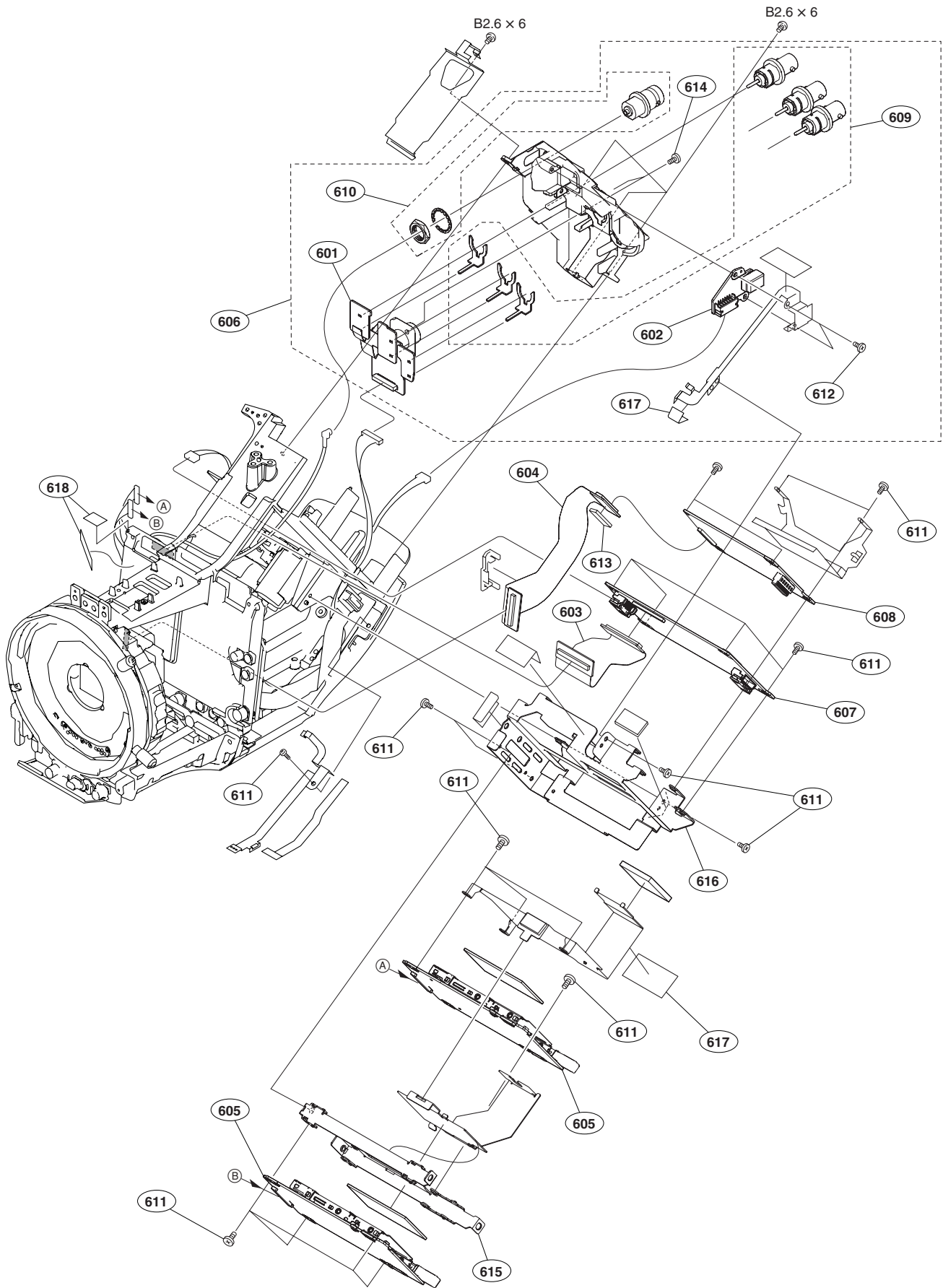
| No. | Part No. | SP Description |
|-----|--------------|----------------------------------|
| 401 | A-1545-695-A | s MOUNTED CIRCUIT BOARD, ASW-66 |
| 402 | A-1545-696-A | s MOUNTED CIRCUIT BOARD, SW-1410 |
| 403 | A-1545-698-A | s MOUNTED CIRCUIT BOARD, SW-1412 |
| 404 | A-1549-955-A | s PANEL ASSY, IN SIDE |
| 405 | X-2318-435-1 | s EX SUB ASSY, LID |
| 406 | 1-480-457-11 | s BLOCK, AU VOLUME |
| 407 | 1-966-165-11 | s HARNESS, SUB (ASW66-SW1412) |
| 408 | 1-966-172-11 | s HARNESS, SUB (ASW66-LED469) |
| 409 | 3-056-233-21 | s SCREW (M2), LOCK ACE, P2 |
| 410 | 3-080-203-51 | s SCREW(M2),LOCK ACE,P2 |
| 411 | 3-080-206-21 | s SCREW, TAPPING, P2 |
| 412 | 3-278-633-01 | s POWER SW SLIDE RAIL |
| 413 | 3-703-358-09 | s PIN, PARALLEL (DIA. 2X25) |
| 414 | 3-877-688-01 | s ARM(B),EX |
| 415 | 3-877-740-01 | s COVER,VOLUME |
| 416 | 3-877-748-03 | s COVER (UPPER), CONNECTOR |
| 417 | 3-877-960-01 | s GUARD,CABLE |
| 418 | 3-877-963-01 | s SWITCH, AU SLIDE (2) |
| 419 | 3-877-973-01 | s SWITCH, SLIDE, AU |
| 420 | 3-877-975-01 | s SW, POWER |
| 421 | 3-877-987-01 | s COVER (LOWER), CONNECTOR |
| 422 | 3-878-078-01 | s BRACKET (AU VOL) |
| 423 | 3-878-081-01 | s ARM(A), EX |
| 424 | 3-878-512-01 | s BASE, EX |
| 425 | 3-878-513-01 | s SPRING (1), TORSION COIL |
| 426 | 3-878-514-01 | s SPRING (2), TORSION COIL |
| 427 | 3-878-515-01 | s SPRING , COMPRESSION COIL |
| 428 | 3-878-516-01 | s SHAFT (1) |
| 429 | 3-878-517-02 | s SHAFT (3) |
| 430 | 3-878-530-01 | s SPRING (LID), PLATE |
| 431 | 3-878-627-01 | s SPRING, LID |
| 432 | 3-878-700-01 | s CUSHION INSIDE |
| | 7-624-101-04 | s STOP RING 1.2 (E TYPE) |
| | 7-624-102-04 | s STOP RING 1.5, TYPE -E |

Inside Panel 2



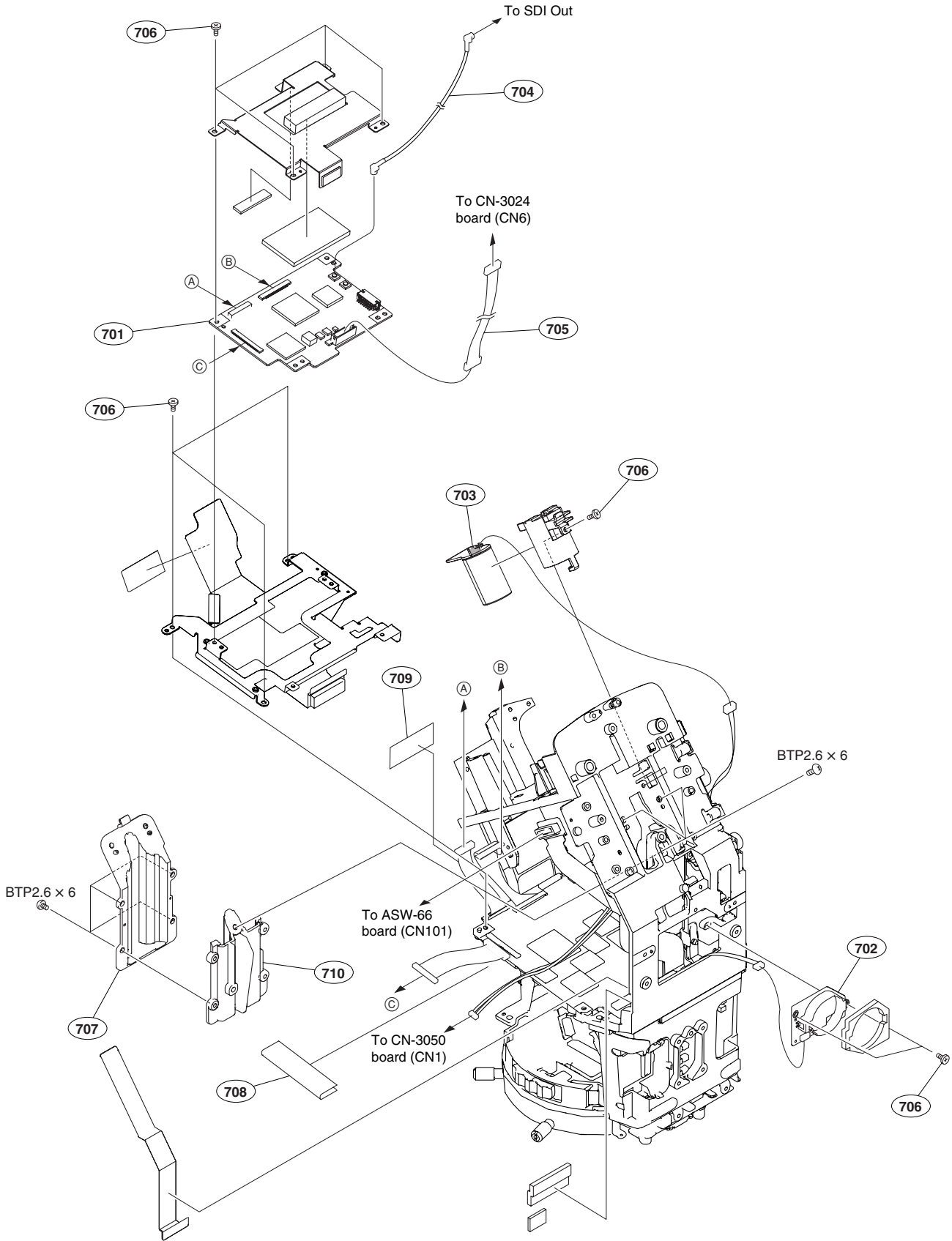
| No. | Part No. | SP Description |
|-----|--------------|----------------------------------|
| 501 | A-1545-694-A | s MOUNTED CIRCUIT BOARD, SWC-48 |
| 502 | A-1545-697-A | s MOUNTED CIRCUIT BOARD, SW-1411 |
| 503 | A-1545-699-A | s MOUNTED CIRCUIT BOARD, HN-343 |
| 504 | A-1545-700-A | s MOUNTED CIRCUIT BOARD, HN-344 |
| 505 | X-2318-470-3 | s PANEL (2) SUB ASSY, IN SIDE |
| 506 | X-2318-472-2 | s PANEL (3) SUB ASSY, INSIDE |
| 507 | 1-966-170-11 | s HARNESS, SUB (8PIN) |
| 508 | 3-056-233-21 | s SCREW (M2), LOCK ACE, P2 |
| 509 | 3-080-206-21 | s SCREW, TAPPING, P2 |
| 510 | 3-877-677-01 | s KEY TOP (ASSIGN) |
| 511 | 3-877-689-01 | s KEY TOP (FRAME) |
| 512 | 3-877-759-01 | s HOLDER, CN |
| 513 | 3-878-018-01 | s BRACKET (FRAME/FULL AUTO) |
| 514 | 3-878-080-01 | s SPACER, LIGHT INTERCEPTION |
| 515 | 3-878-532-01 | s PANEL(1) , IN SIDE |
| 516 | 3-878-890-02 | s TAPE (SWC48) |

EX-DD and Connector Rear



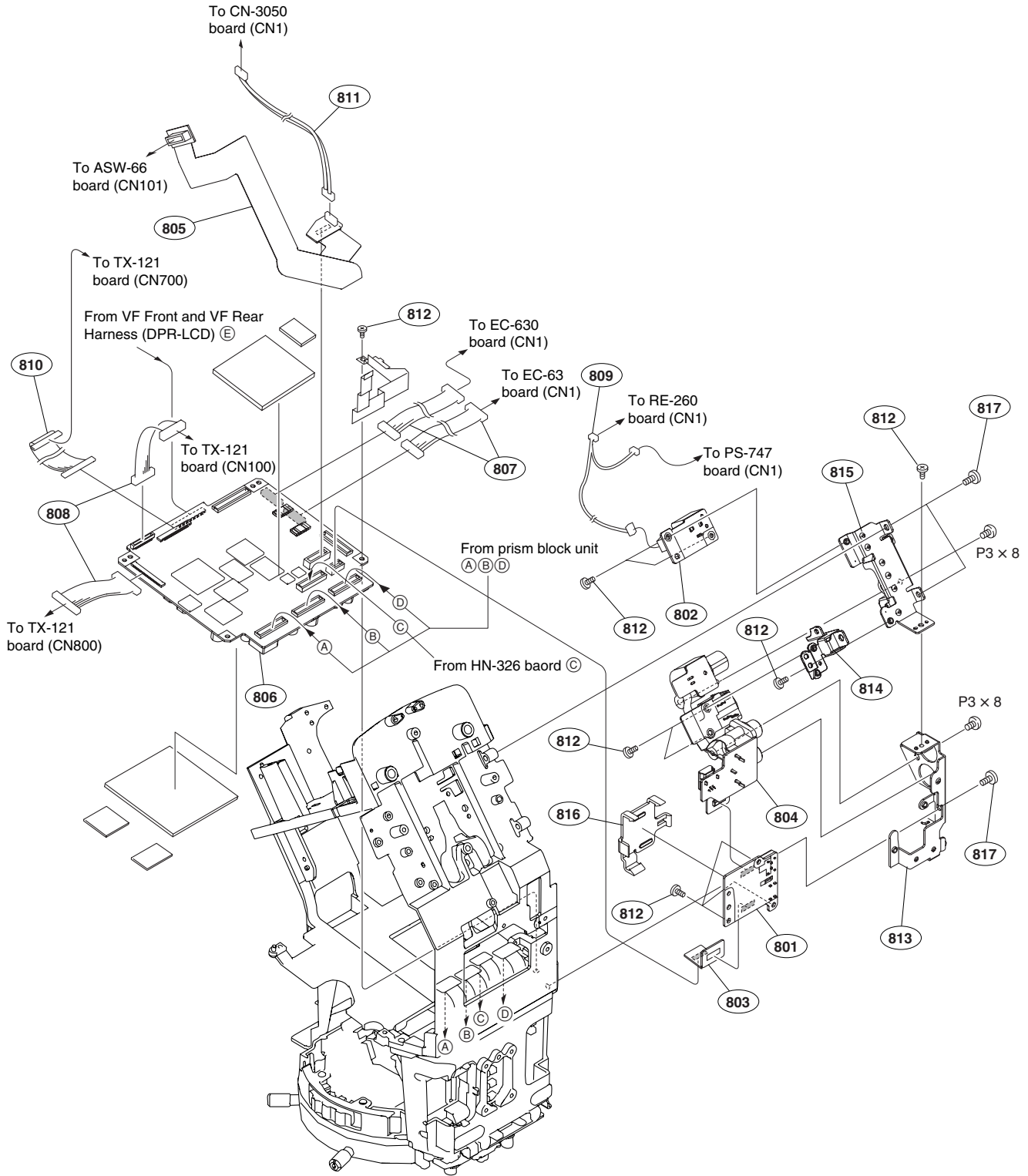
| No. | Part No. | SP | Description |
|-----|--------------|----|--------------------------------|
| 601 | A-1545-703-A | s | MOUNTED CIRCUIT BOARD, CN-3024 |
| 602 | A-1545-704-A | s | MOUNTED CIRCUIT BOARD, CN-3050 |
| 603 | A-1545-716-A | s | MOUNTED CIRCUIT BOARD, CN-3022 |
| 604 | A-1545-717-A | s | MOUNTED CIRCUIT BOARD, CN-3023 |
| 605 | A-1545-718-A | s | MOUNTED CIRCUIT BOARD, EC-63 |
| 606 | A-1549-958-A | s | REAR ASSY, CONNECTOR |
| 607 | A-1550-168-A | s | MOUNTED CIRCUIT BOARD, RE-260 |
| 608 | A-1550-169-A | s | MOUNTED CIRCUIT BOARD, RE-261 |
| 609 | 1-766-381-11 | s | CONNECTOR, COAXIAL (BNC TYPE) |
| 610 | 1-784-240-11 | s | CONVERTER, COAXIAL CONNECTOR |
| 611 | 3-056-233-21 | s | SCREW (M2), LOCK ACE, P2 |
| 612 | 3-080-206-21 | s | SCREW, TAPPING, P |
| 613 | 3-286-759-01 | s | CUSHION CN3007 |
| 614 | 3-694-181-03 | s | TYPE1,AROCK PRECISION +P 2.6X5 |
| 615 | 3-876-722-01 | s | BRACKET, EX |
| 616 | 3-878-258-02 | s | BRACKET, EX-DD |
| 617 | 3-878-890-02 | s | TAPE (SWC48) |
| 618 | 3-878-657-01 | s | TAPE50 |
| | 7-621-770-67 | s | SCREW +B 2.6X6 |

Main Frame 1



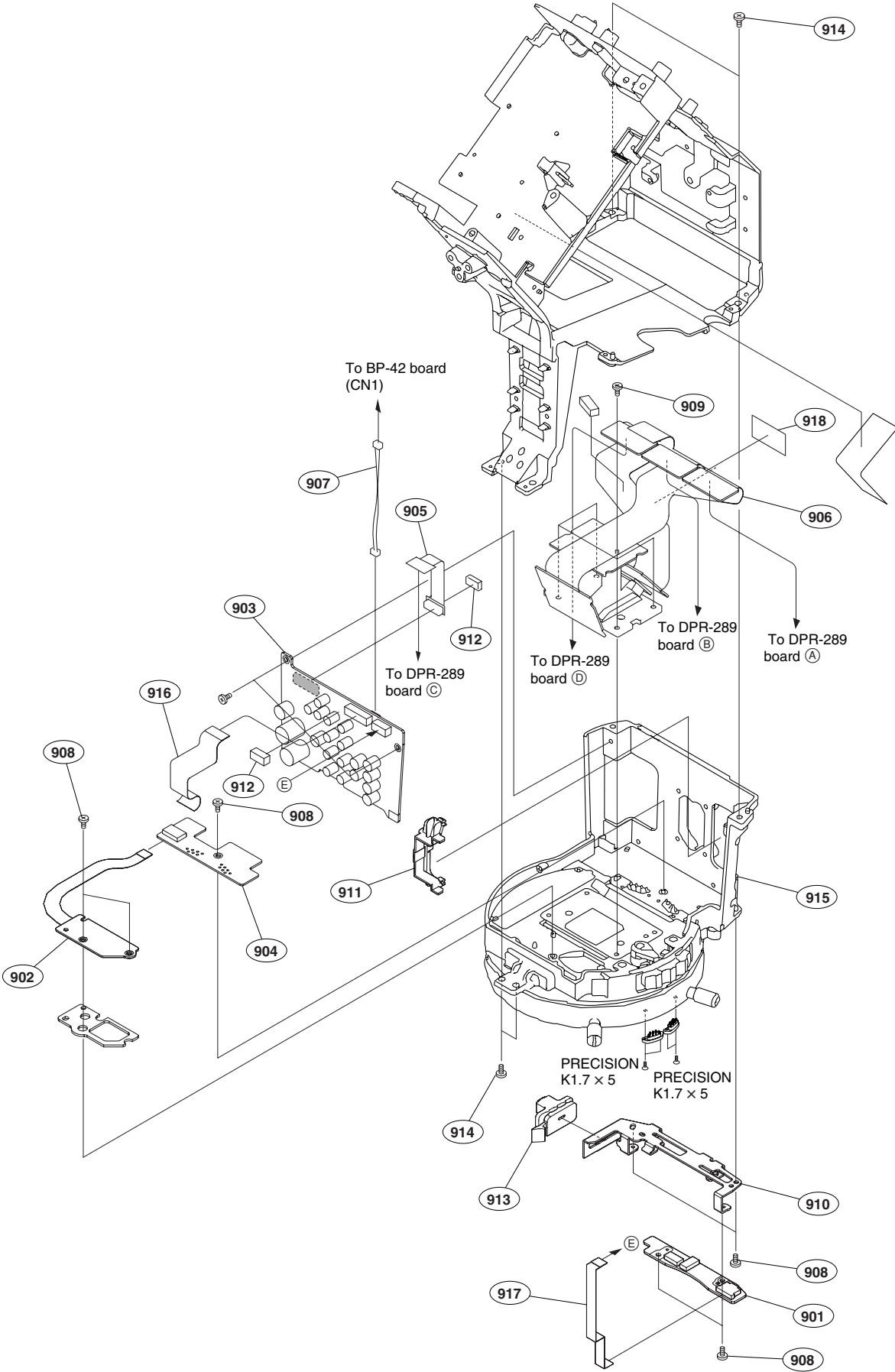
| No. | Part No. | SP | Description |
|-----|--------------|----|-------------------------------|
| 701 | A-1563-418-A | s | MOUNTED CIRCUIT BOARD, TX-129 |
| 702 | A-1545-691-A | s | MOUNTED CIRCUIT BOARD, BP-42 |
| 703 | A-1545-798-A | s | MOUNTED CIRCUIT BOARD, PS-747 |
| 704 | 1-829-055-11 | s | CABLE ASSEMBLY, COAXIAL |
| 705 | 1-966-168-11 | s | HARNES, SUB (TX121-CN3024) |
| 706 | 3-056-233-21 | s | SCREW (M2), LOCK ACE, P2 |
| 707 | 3-878-254-02 | s | RAIL, PAD TOP |
| 708 | 3-878-656-01 | s | TAPE 60 |
| 709 | 3-878-657-01 | s | TAPE 50 |
| 710 | 3-878-255-01 | s | RAIL, PAD BOTTOM |
| | 7-685-533-19 | s | SCREW +BTP 2.6X6 TYPE2 N-S |

Main Frame 2



| No. | Part No. | SP Description |
|-----|--------------|--|
| 801 | A-1545-791-A | s MOUNTED CIRCUIT BOARD, JK-81 |
| 802 | A-1545-792-A | s MOUNTED CIRCUIT BOARD, DC-146 |
| 803 | A-1545-795-A | s MOUNTED CIRCUIT BOARD, MOUNT, HN-347 |
| 804 | A-1545-796-A | s MOUNTED CIRCUIT BOARD, MOUNT, JK-84 |
| 805 | A-1545-797-A | s MOUNTED CIRCUIT BOARD, HN-337 |
| 806 | A-1555-158-A | s MOUNTED CIRCUIT BOARD, DPR-289A |
| 807 | 1-965-708-11 | s HARNESS (DPR-EC) |
| 808 | 1-965-710-11 | s HARNESS (DPR-TX) |
| 809 | 1-966-164-11 | s HARNESS, SUB (DC146-RE260) |
| 810 | 1-966-167-11 | s HARNESS, SUB (DPR289-TX121) |
| 811 | 1-966-169-11 | s HARNESS, SUB (HN337-CN3050) |
| 812 | 3-056-233-21 | s SCREW (M2), LOCK ACE, P2 |
| 813 | 3-876-718-02 | s BRACKET, CN (OUT) |
| 814 | 3-876-719-01 | s S BRACKET |
| 815 | 3-876-727-02 | s BRACKET (OUT) REAR, CONNECTOR |
| 816 | 3-876-885-01 | s CLAMP, CN OUTSIDE |
| 817 | 4-673-655-01 | s SCREW +B |
| | 7-685-146-11 | s SCREW +P 3X8 TYPE2 NON-SLIT |

Lens Mount



| No. | Part No. | SP Description |
|-----|--------------|-------------------------------------|
| 901 | A-1545-722-A | s MOUNTED CIRCUIT BOARD, SW-1389 |
| 902 | A-1545-723-A | s MOUNTED CIRCUIT BOARD, SE-923 |
| 903 | A-1545-724-A | s MOUNTED CIRCUIT BOARD, AU-318 |
| 904 | A-1545-725-A | s MOUNTED CIRCUIT BOARD, IR-42 |
| 905 | A-1545-726-A | s MOUNTED CIRCUIT BOARD, HN-326 |
| 906 | A-1557-692-A | s BLOCK UNIT, PRISM |
| 907 | 1-966-162-11 | s HARNESS, SUB (AU318-BP42) |
| 908 | 3-056-233-21 | s SCREW (M2), LOCK ACE, P2 |
| 909 | 3-080-203-41 | s SREW(M2), LOCK ACE,P2 |
| 910 | 3-876-720-01 | s BRACKET, SW PWB |
| 911 | 3-876-882-02 | s GUIDE, PC BOARD, INSIDE |
| 912 | 3-876-883-01 | s CUSHION (FRONT) |
| 913 | 3-878-241-01 | s HOLDER, LENS MOUNT |
| 914 | 4-673-655-01 | s SCREW +B |
| 915 | 1-788-851-11 | s LENS MOUNT |
| 916 | 1-877-242-11 | s PRINTED WIRING BOARD, HN-346 |
| 917 | 1-877-241-11 | s PRINTED WIRING BOARD, HN-345 |
| 918 | 3-878-657-01 | s TAPE50 |
| | 7-627-450-98 | s SCREW, PRECISION +K 1.7X5 TYPE1 S |

(TX-129 BOARD)

| Ref. No. or Q'ty | Part No. | SP Description |
|---------------------|--------------|--------------------------|
| R500 | 1-220-870-81 | s RES, CHIP 10 (1005) |
| R501 | 1-216-791-91 | s RES, CHIP 3.3 (1608) |
| R502 | 1-208-911-81 | s RES, CHIP 10K (1005) |
| R503 | 1-216-864-91 | s CONDUCTOR, CHIP (1608) |
| R504 | 1-216-864-91 | s CONDUCTOR, CHIP (1608) |
| R506 | 1-208-884-81 | s RES, CHIP 750 (1005) |
| R507 | 1-208-871-81 | s RES, CHIP 220 (1005) |
| R508 | 1-208-860-81 | s RES, CHIP 75 (1005) |
| R509 | 1-208-860-81 | s RES, CHIP 75 (1005) |
| R510 | 1-208-871-81 | s RES, CHIP 220 (1005) |
| R513 | 1-208-919-81 | s RES, CHIP 22K (1005) |
| R518 | 1-218-990-81 | s CONDUCTOR, CHIP (1005) |
| R519 | 1-218-990-81 | s CONDUCTOR, CHIP (1005) |
| R520 | 1-218-990-81 | s CONDUCTOR, CHIP (1005) |
| R521 | 1-208-911-81 | s RES, CHIP 10K (1005) |
| R522 | 1-208-860-81 | s RES, CHIP 75 (1005) |
| R523 | 1-208-895-81 | s RES, CHIP 2.2K (1005) |
| R550 | 1-218-990-81 | s CONDUCTOR, CHIP (1005) |
| R707 | 1-208-951-81 | s RES, CHIP 470K (1005) |
| R709 | 1-208-955-81 | s RES, CHIP 680K (1005) |
| R710 | 1-208-939-81 | s RES, CHIP 150K (1005) |
| R711 | 1-218-990-81 | s CONDUCTOR, CHIP (1005) |
| R712 | 1-208-955-81 | s RES, CHIP 680K (1005) |
| R713 | 1-218-990-81 | s CONDUCTOR, CHIP (1005) |
| R714 | 1-208-955-81 | s RES, CHIP 680K (1005) |
| R800 | 1-208-935-81 | s RES, CHIP 100K (1005) |
| R804 | 1-208-935-81 | s RES, CHIP 100K (1005) |
| R807 | 1-208-935-81 | s RES, CHIP 100K (1005) |
| R808 | 1-220-870-81 | s RES, CHIP 10 (1005) |
| R809 | 1-208-911-81 | s RES, CHIP 10K (1005) |
| R810 | 1-208-927-81 | s RES, CHIP 47K (1005) |
| R811 | 1-208-911-81 | s RES, CHIP 10K (1005) |
| R813 | 1-208-911-81 | s RES, CHIP 10K (1005) |
| R814 | 1-220-870-81 | s RES, CHIP 10 (1005) |
| R815 | 1-220-870-81 | s RES, CHIP 10 (1005) |
| R816 | 1-208-943-81 | s RES, CHIP 220K (1005) |
| R817 | 1-208-863-81 | s RES, CHIP 100 (1005) |
| R818 | 1-208-863-81 | s RES, CHIP 100 (1005) |
| R901 | 1-218-990-81 | s CONDUCTOR, CHIP (1005) |
| R902 | 1-208-911-81 | s RES, CHIP 10K (1005) |
| R903 | 1-208-860-81 | s RES, CHIP 75 (1005) |
| R905 | 1-220-878-81 | s RES, CHIP 22 (1005) |
| R906 | 1-220-878-81 | s RES, CHIP 22 (1005) |
| R908 | 1-220-878-81 | s RES, CHIP 22 (1005) |
| R909 | 1-208-899-81 | s RES, CHIP 3.3K (1005) |
| R911 | 1-208-927-81 | s RES, CHIP 47K (1005) |
| R912 | 1-208-927-81 | s RES, CHIP 47K (1005) |
| R913 | 1-208-891-81 | s RES, CHIP 1.5K (1005) |
| R914 | 1-208-895-81 | s RES, CHIP 2.2K (1005) |
| R915 | 1-208-895-81 | s RES, CHIP 2.2K (1005) |
| R918 | 1-208-891-81 | s RES, CHIP 1.5K (1005) |
| R919 | 1-208-935-81 | s RES, CHIP 100K (1005) |
| R920 | 1-208-891-81 | s RES, CHIP 1.5K (1005) |
| R921 | 1-208-935-81 | s RES, CHIP 100K (1005) |
| R922 | 1-208-903-81 | s RES, CHIP 4.7K (1005) |
| R923 | 1-208-935-81 | s RES, CHIP 100K (1005) |
| R924 | 1-208-915-81 | s RES, CHIP 15K (1005) |
| R925 | 1-208-931-81 | s RES, CHIP 68K (1005) |
| R926 | 1-208-903-81 | s RES, CHIP 4.7K (1005) |

(TX-129 BOARD)

| Ref. No. or Q'ty | Part No. | SP Description |
|---------------------|--------------|----------------------------------|
| R927 | 1-208-915-81 | s RES, CHIP 15K (1005) |
| R928 | 1-208-897-81 | s RES, CHIP 2.7K (1005) |
| R929 | 1-218-990-81 | s CONDUCTOR, CHIP (1005) |
| R931 | 1-208-863-81 | s RES, CHIP 100 (1005) |
| R932 | 1-208-911-81 | s RES, CHIP 10K (1005) |
| R934 | 1-208-863-81 | s RES, CHIP 100 (1005) |
| R1002 | 1-208-951-81 | s RES, CHIP 470K (1005) |
| R1003 | 1-208-931-81 | s RES, CHIP 68K (1005) |
| R1004 | 1-208-935-81 | s RES, CHIP 100K (1005) |
| R1006 | 1-208-935-81 | s RES, CHIP 100K (1005) |
| R1007 | 1-208-935-81 | s RES, CHIP 100K (1005) |
| R1008 | 1-218-990-81 | s CONDUCTOR, CHIP (1005) |
| R1009 | 1-216-864-91 | s CONDUCTOR, CHIP (1608) |
| R1010 | 1-208-927-81 | s RES, CHIP 47K (1005) |
| R1011 | 1-208-951-81 | s RES, CHIP 470K (1005) |
| R1012 | 1-208-939-81 | s RES, CHIP 150K (1005) |
| R1013 | 1-208-943-81 | s RES, CHIP 220K (1005) |
| R1014 | 1-208-935-81 | s RES, CHIP 100K (1005) |
| RB200 | 1-234-375-21 | s RES, NETWORK 1K (1005X4) |
| X300 | 1-795-670-12 | s OSCILLATOR, CRYSTAL (VCXO)3.3V |
| X301 | 1-795-671-12 | s OSCILLATOR, CRYSTAL (VCXO)3.3V |
| X500 | 1-814-162-11 | s OSCILLATOR (VCO) |

4-4. Supplied Accessories

SUPPLIED ACCESSORIES

| Ref. No. or Q'ty | Part No. | SP Description |
|---------------------|----------------|----------------------------------|
| 1pc | △ 1-479-570-14 | s REMOTE COMMANDER (RM-F300) |
| 1pc | △ 1-782-476-13 | s CORD, POWER (CN) |
| 1pc | △ 1-757-562-11 | s CORD, POWER (UC) |
| 1pc | 1-788-852-11 | s ADAPTOR, LENS (LO-3830) |
| 1pc | 1-829-414-22 | s CABLE, CONNECTION |
| 1pc | 1-830-863-11 | s USB CABLE |
| 1pc | 3-080-203-51 | s SREW(M2), LOCK ACE, P2 |
| 1pc | 3-278-903-01 | s SHORUDER BELT |
| 1pc | △ 3-878-037-01 | s CD-ROM |
| 1pc | △ 3-878-038-01 | s MANUAL, INSTRUCTION (JAPANESE) |
| 1pc | △ 3-878-038-11 | s MANUAL, INSTRUCTION (ENGLISH) |
| 1pc | △ 3-878-038-21 | s MANUAL, INSTRUCTION (CHINESE) |
| 1pc | 3-879-020-01 | s CLAMP, DC CABLE |
| 3pcs | 7-682-560-09 | s SCREW +B 4X6 |



Humberto 1º 2889 - C1231ACE - Bs As, Argentina
 Tel: +54 11 4122-1200 Fax: +54 11 4308-5493
 ingenieria@viditec.com.ar
 viditec.com