

SONY®

SOLID-STATE MEMORY CAMCORDER

PMW-F3



XDCMEX SXS

Exmor
Super 35 CMOS

HDMI i

SERVICE MANUAL

1st Edition

Section 5

Spare Parts

5-1. Note on Repair Parts

1. Safety Related Components Warning

WARNING

Components marked △ are critical to safe operation. Therefore, specified parts should be used in the case of replacement.

2. Standardization of Parts

Some repair parts supplied by Sony differ from those used for the unit. These are because of parts commonality and improvement.

3. Stock of Parts

Parts marked with “o” at SP (Supply Code) column of the spare parts list may not be stocked. Therefore, the delivery date will be delayed.

4. Harness

Harnesses with no part number are not registered as spare parts.

1. 安全重要部品

△ 警告

△印のついた部品は安全性を維持するために重要な部品です。したがって、交換する時は必ず指定の部品を使ってください。

2. 部品の共通化

ソニーから供給する補修用部品は、セットに使われているものと異なることがあります。これは部品の共通化、改良等によるものです。

3. 部品の在庫

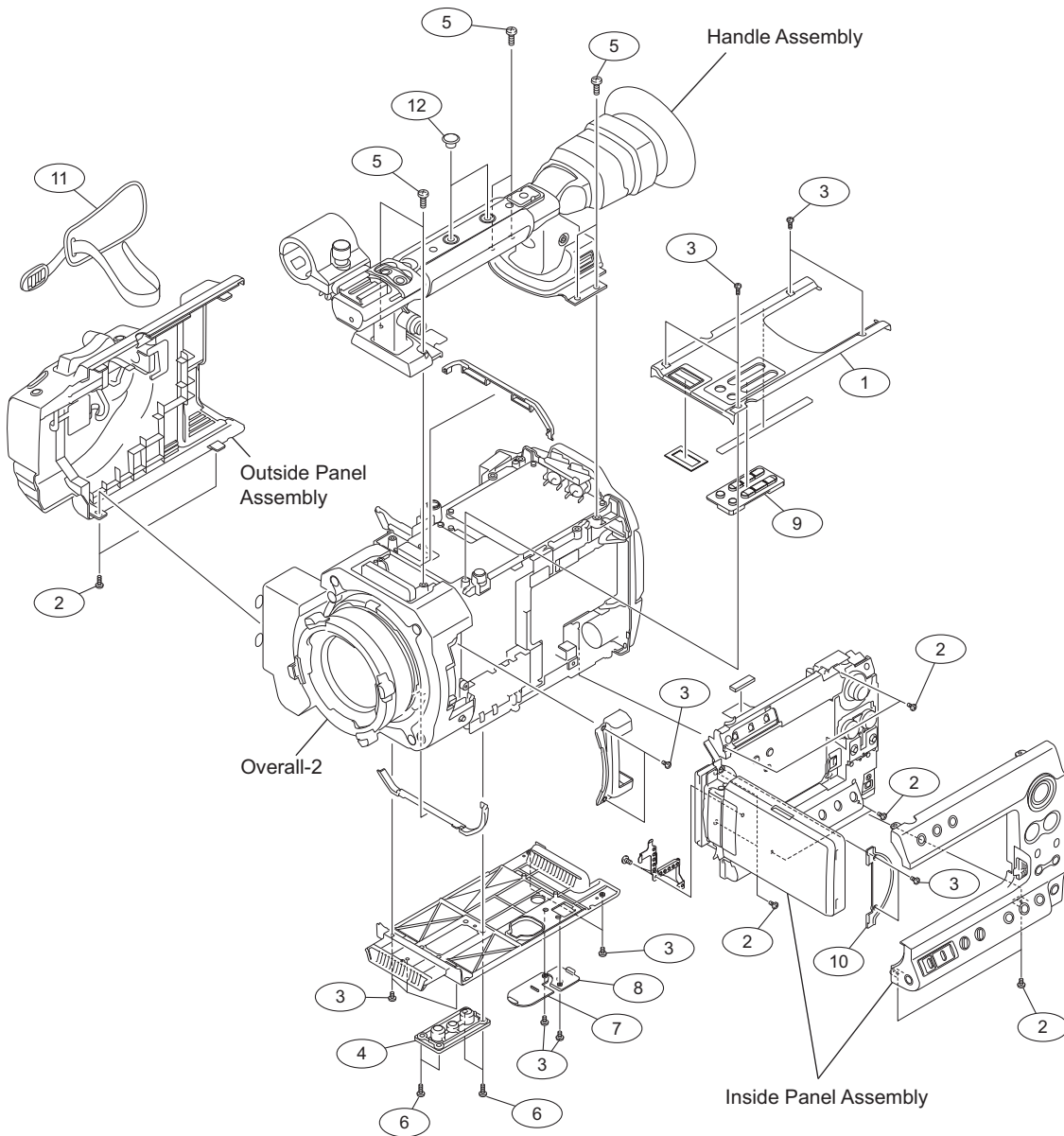
部品表の SP (Supply code) 欄に “o” で示される部品は在庫していないことがあり、納期が長くなることがあります。

4. ハーネス

部品番号の記載されていないハーネスは、サービス部品として登録されていません。

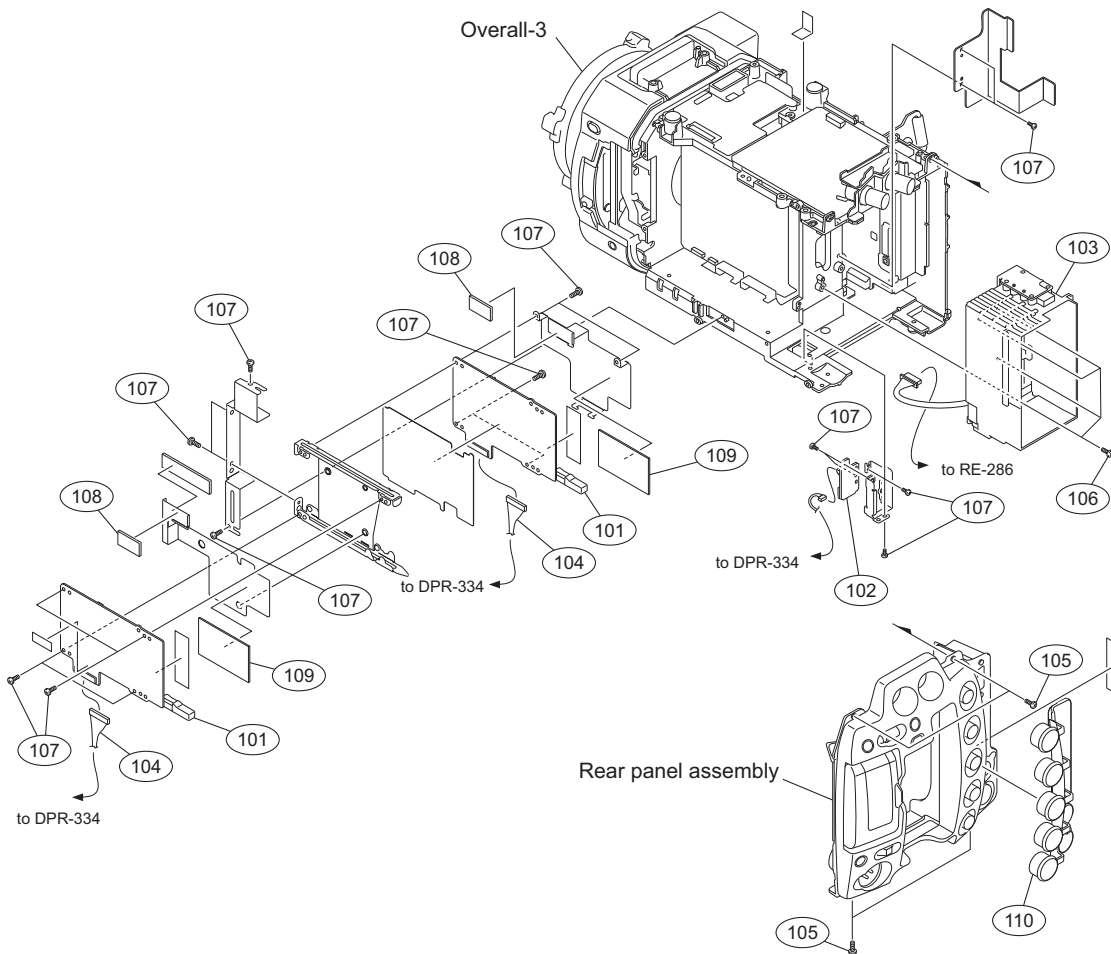
5-2. Exploded Views

Overall-1



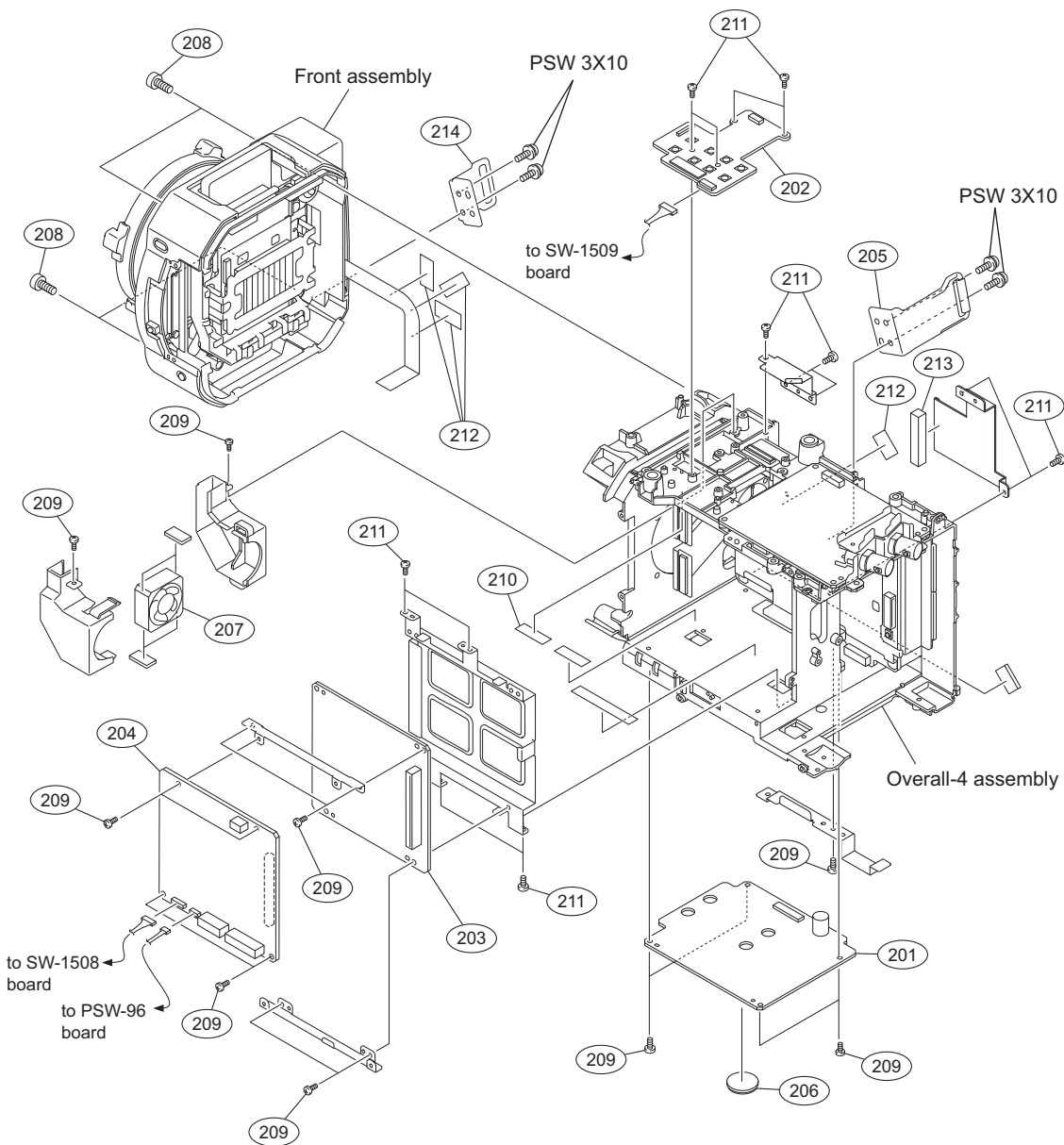
No.	Part No.	SP	Description
1	X-2580-849-1	s	SUB ASSY, TOP PANEL
2	3-056-233-21	s	SCREW (M2), LOCK ACE, P2
3	3-080-203-31	s	SREW (M2), LOCK ACE,P2
4	3-288-392-01	s	WASHER (D), TRIPOD
5	3-364-990-12	s	SCREW (M3X8)
6	4-183-321-01	s	M2.6 (ECOLOGY), LOCK
7	4-275-218-01	s	COVER, LITHIUM BATTERY
8	4-275-220-01	s	USB CN COVER
9	4-275-228-02	s	SW KEY, RUBBER
10	4-275-238-01	s	COVER, PANEL
11	4-275-256-01	s	BELT, GRIP
12	4-275-257-01	s	TOP CAP

Overall-2



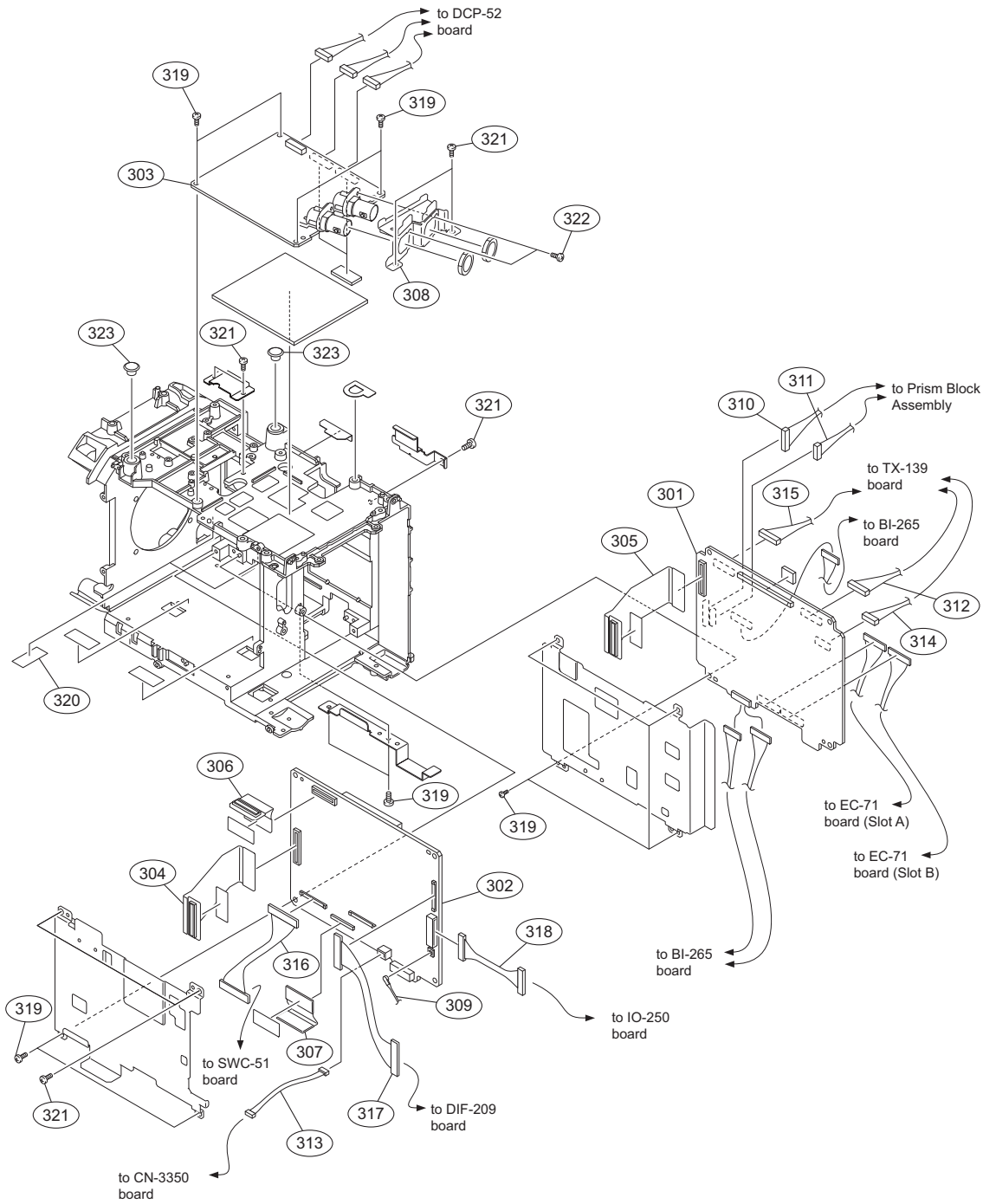
No.	Part No.	SP	Description
101	A-1799-070-A	s	MOUNTED CIRCUIT BOARD, EC-71
102	A-1799-073-A	s	MOUNTED CIRCUIT BOARD, CN-3350
103	A-1814-748-A	s	BATTERY CASE ASSY
104	1-967-684-11	s	HARNESS (EC_A)
105	3-056-233-21	s	SCREW (M2), LOCK ACE, P2
106	3-080-203-31	s	SREW (M2), LOCK ACE,P2
107	3-968-729-51	s	SCREW (M2), LOCK ACE, P2
108	4-164-628-01	s	SHEET RADIATION 1.5 D
109	4-164-656-01	s	SHEET RADIATION 1 A
110	4-275-245-02	s	IO COVER

Overall-3



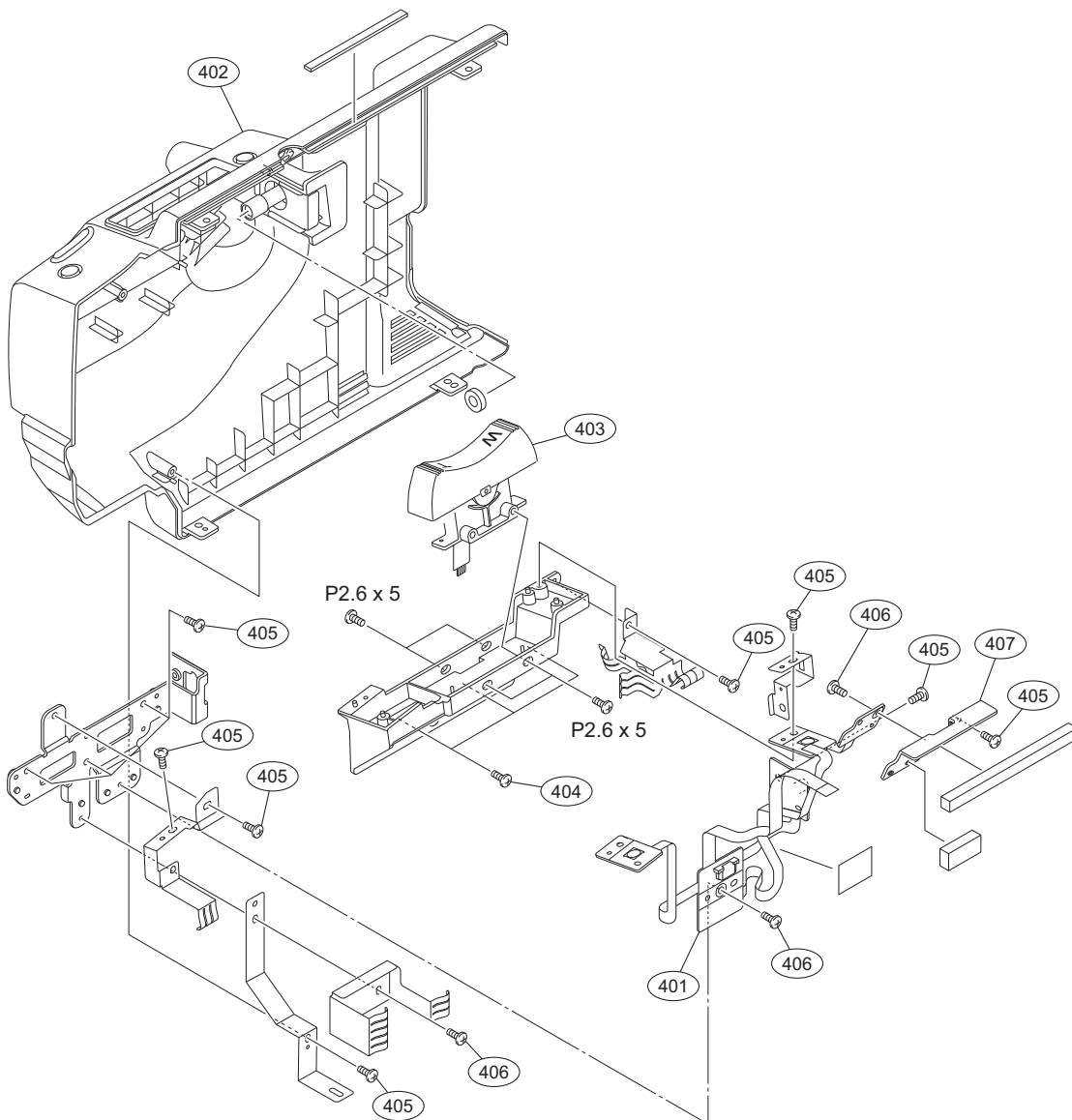
No.	Part No.	SP	Description
201	A-1799-072-A	s	MOUNTED CIRCUIT BOARD, AU-337
202	A-1799-083-A	s	MOUNTED CIRCUIT BOARD, KSW-58
203	A-1803-288-A	s	MOUNTED CIRCUIT BOARD, RE-285
204	A-1803-289-A	s	MOUNTED CIRCUIT BOARD, RE-286
205	X-2580-850-1	s	BRACKET A ASSY, BELT
206	1-528-174-33	s	BATTERY, LITHIUM (CR2032 TYPE)
207	1-855-061-11	s	FAN, DC (25 SQUARE)
208	2-623-773-21	s	BOLT (M3X10), STAINLESS
209	3-056-233-21	s	SCREW (M2), LOCK ACE, P2
210	3-079-115-01	s	TAPE AS
211	3-968-729-52	s	SCREW (M2), LOCK ACE, P2
212	3-878-890-02	s	TAPE (SWC48)
213	4-129-038-01	s	FOAM (MOF), SHIELD
214	4-275-212-01	s	BRACKET, BELT B
	7-682-949-01	s	SCREW +PSW 3X10

Overall-4



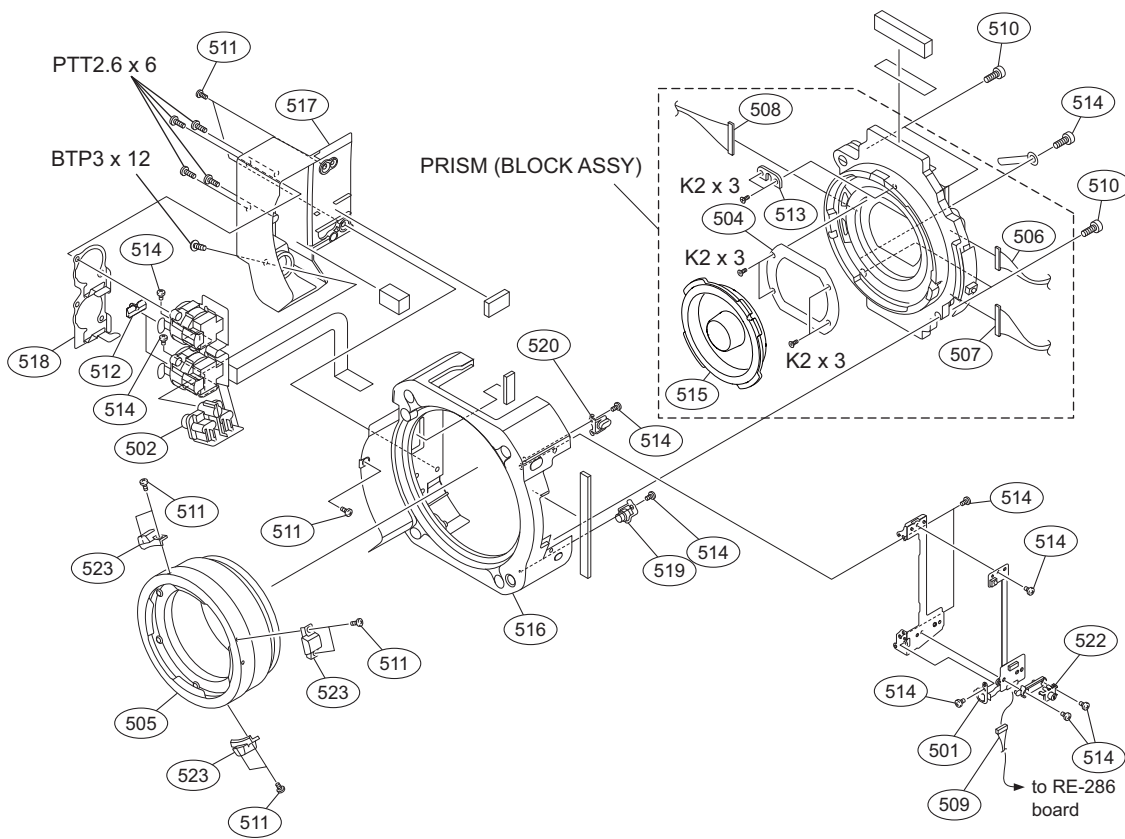
No.	Part No.	SP	Description	No.	Part No.	SP	Description
301	A-1829-731-A	s	MOUNTED CIRCUIT BOARD, DCP-52 (RP)	311	1-967-676-11	s	HARNESS, SUB (SE)
302	A-1829-732-A	s	MOUNTED CIRCUIT BOARD, DPR-334 (RP)	312	1-967-677-11	s	HARNESS, SUB (TX)
303	A-1829-733-A	s	MOUNTED CIRCUIT BOARD, TX-139 (RP)	313	1-967-678-11	s	HARNESS, SUB (USB)
304	A-1799-075-A	s	MOUNTED CIRCUIT BOARD, HN-370	314	1-967-680-11	s	HARNESS (DCP-TX1)
305	A-1799-076-A	s	MOUNTED CIRCUIT BOARD, HN-371	315	1-967-681-11	s	HARNESS (DCP-TX2)
306	A-1799-077-A	s	MOUNTED CIRCUIT BOARD, HN-373	316	1-967-682-11	s	HARNESS (LCD)
307	A-1799-085-A	s	MOUNTED CIRCUIT BOARD, HN-374	317	1-967-683-11	s	HARNESS (HDMI)
308	X-2580-847-1	s	BNC BRACKET ASSY	318	1-967-686-11	s	HARNESS, SUB (IO)
309	1-838-667-11	s	CABLE ASSEMBLY, COAXIAL	319	3-056-233-21	s	SCREW (M2), LOCK ACE, P2
310	1-967-675-11	s	HARNESS, SUB (LENS)	320	3-079-115-01	s	TAPE AS
				321	3-968-729-52	s	SCREW (M2), LOCK ACE, P2
				322	4-183-321-01	s	M2.6 (ECOLOGY), LOCK
				323	4-275-257-01	s	TOP CAP

Outside panel assembly



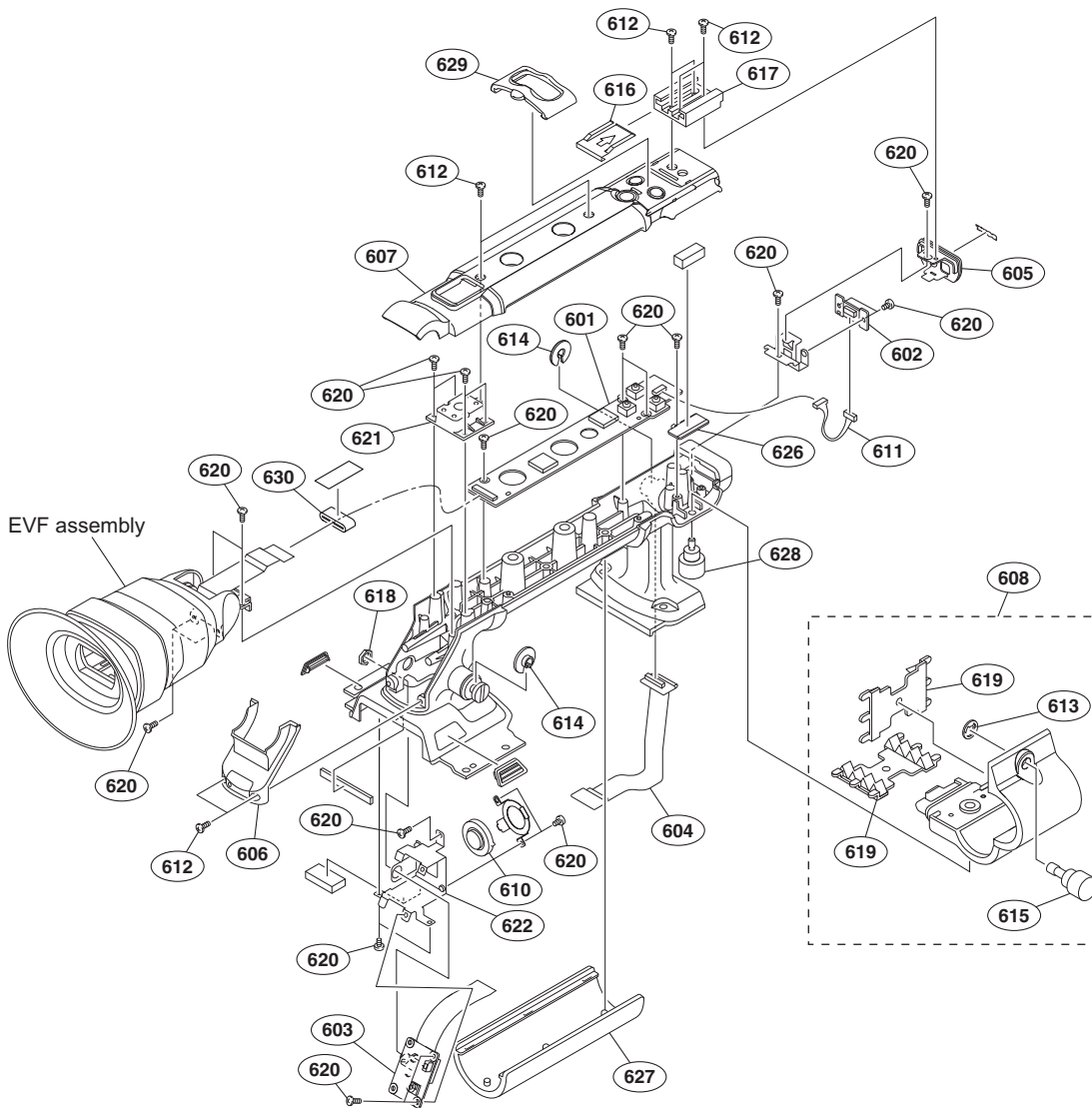
No.	Part No.	SP	Description
401	A-1799-154-A	s	MOUNTED CIRCUIT BOARD, SW-1511
402	X-2580-843-1	s	SUB ASSY, OUTSIDE PANEL
403	1-458-342-11	s	SEESAW, ZOOM
404	3-080-203-31	s	SREW(M2), LOCK ACE,P2
405	3-080-206-21	s	SCREW, TAPPING, P2
406	3-968-729-52	s	SCREW (M2), LOCK ACE, P2
407	4-275-104-01	s	BRACKET, SW
	7-685-132-19	s	SCREW +P 2.6X5 TYPE2 NON-SLIT

Front assembly



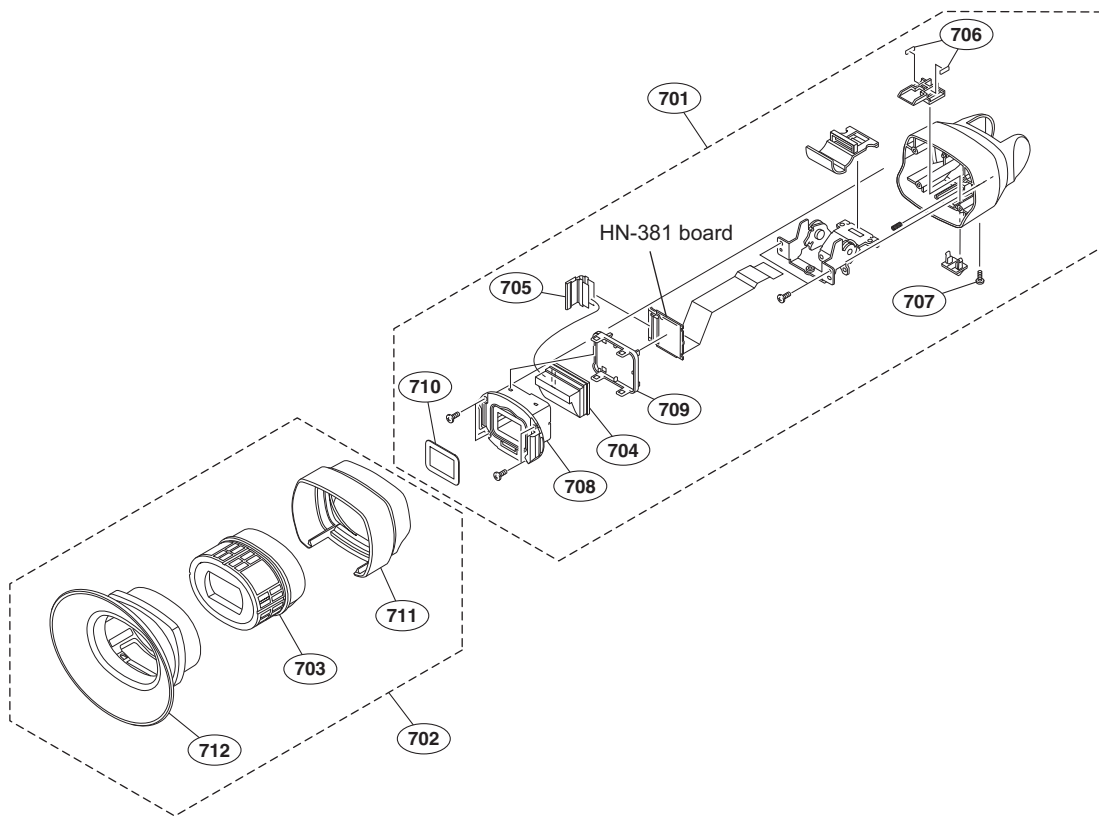
No.	Part No.	SP	Description
501	A-1799-080-A	s	MOUNTED CIRCUIT BOARD, SW-1508
502	A-1799-146-A	s	MOUNTED CIRCUIT BOARD, AXM-45
504	1-856-208-11	s	FILTER UNIT, OPTICAL
505	1-856-209-11	s	ADAPTOR, PL CAMERA
506	1-967-666-12	s	HARNESS, SUB (BI-DCP15)
507	1-967-667-12	s	HARNESS, SUB (BI-DCP22)
508	1-967-668-12	s	HARNESS (BI-DCP)
509	1-967-674-11	s	HARNESS, SUB (FRONT RE)
510	2-623-773-21	s	BOLT (M3X10), STAINLESS
511	3-080-203-31	s	SREW (M2), LOCK ACE, P2
512	3-278-665-02	s	KNOB, XLR SW
513	3-776-897-02	s	GUIDE PLATE
514	3-968-729-52	s	SCREW (M2), LOCK ACE, P2
515	4-104-999-02	s	CAP, MOUNT
516	4-260-152-01	s	PANEL, FRONT
517	4-260-153-02	s	BOX, MICROPHONE CONNECTOR
518	4-275-155-01	s	BRACKET (XLR)
519	4-275-156-01	s	BUTTON (ASSIGN)
520	4-275-157-01	s	BUTTON (5600K)
522	4-275-168-01	s	KNOB (SHUTTER)
523	4-275-298-02	s	LEVER, PL MOUNT
	7-627-452-18	s	SCREW, PRECISION +K 2X3
	7-685-548-19	s	SCREW +BTP 3X12 TYPE2 N-S
	7-685-792-09	s	SCREW +PTT 2.6X6 (S)

Handle assembly



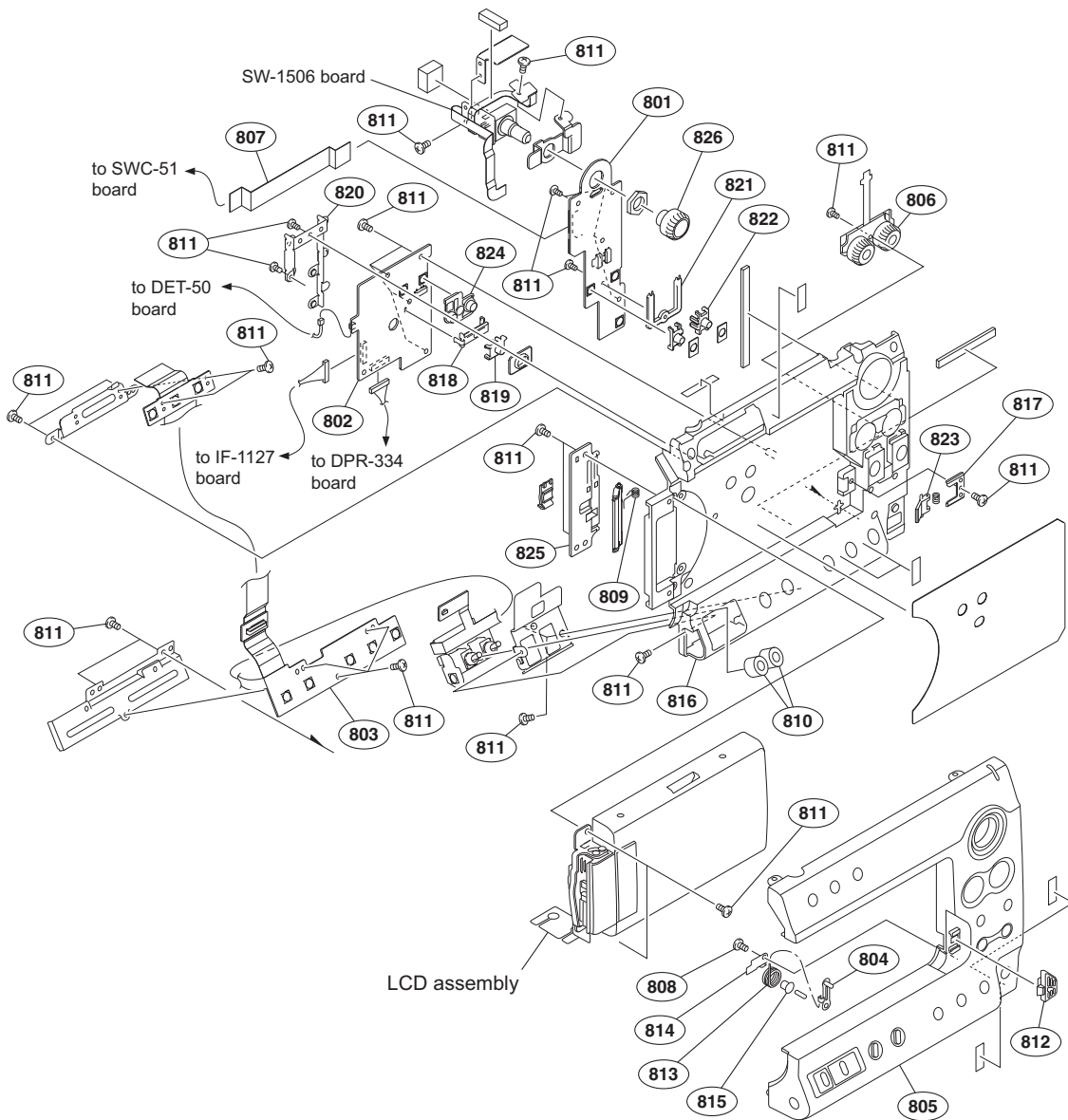
No.	Part No.	SP	Description	No.	Part No.	SP	Description
601	A-1799-078-A	s	MOUNTED CIRCUIT BOARD, DR-661	627	4-275-241-01	s	HANDLE GRIP
602	A-1799-148-A	s	MOUNTED CIRCUIT BOARD, RM-233	628	4-275-246-01	s	SCREW (M3)
603	A-1799-149-A	s	MOUNTED CIRCUIT BOARD, RM-234	629	4-275-254-01	s	ASSIGN GUARD
604	A-1799-153-A	s	MOUNTED CIRCUIT BOARD, HN-375	630	4-279-243-01	s	EVF FERRITE CORE
605	X-2580-844-1	s	HANDLE COVER (FRONT) ASSY				
606	X-2580-845-1	s	HANDLE COVER (REAR) ASSY				
607	X-2580-846-1	s	HANDLE COVER (TOP) ASSY				
608	X-2580-848-1	s	MICROPHONE HOLDER ASSY				
610	1-825-968-11	s	LOUDSPEAKER (1.8CM)				
611	1-967-688-11	s	HARNES, SUB (FRONT RM)				
612	3-080-203-31	s	SREW (M2), LOCK ACE,P2				
613	3-165-904-01	s	WASHER, SCREW STOPPER				
614	3-654-615-02	s	COLLAR, SUSPENSION				
615	3-657-657-02	s	SCREW (M5)				
616	3-688-754-11	s	SPRING				
617	3-688-755-13	s	SHOE, ACCESSORY				
618	3-724-182-01	s	NUT (SMALL JACK), M6				
619	3-854-132-01	s	GEL, MIC				
620	3-968-729-52	s	SCREW (M2), LOCK ACE, P2				
621	4-164-569-02	s	SHOE REAR ACCESSORY				
622	4-275-147-01	s	RM-234 BRACKET				
626	4-275-154-01	s	MIC BRACKET				

EVF assembly



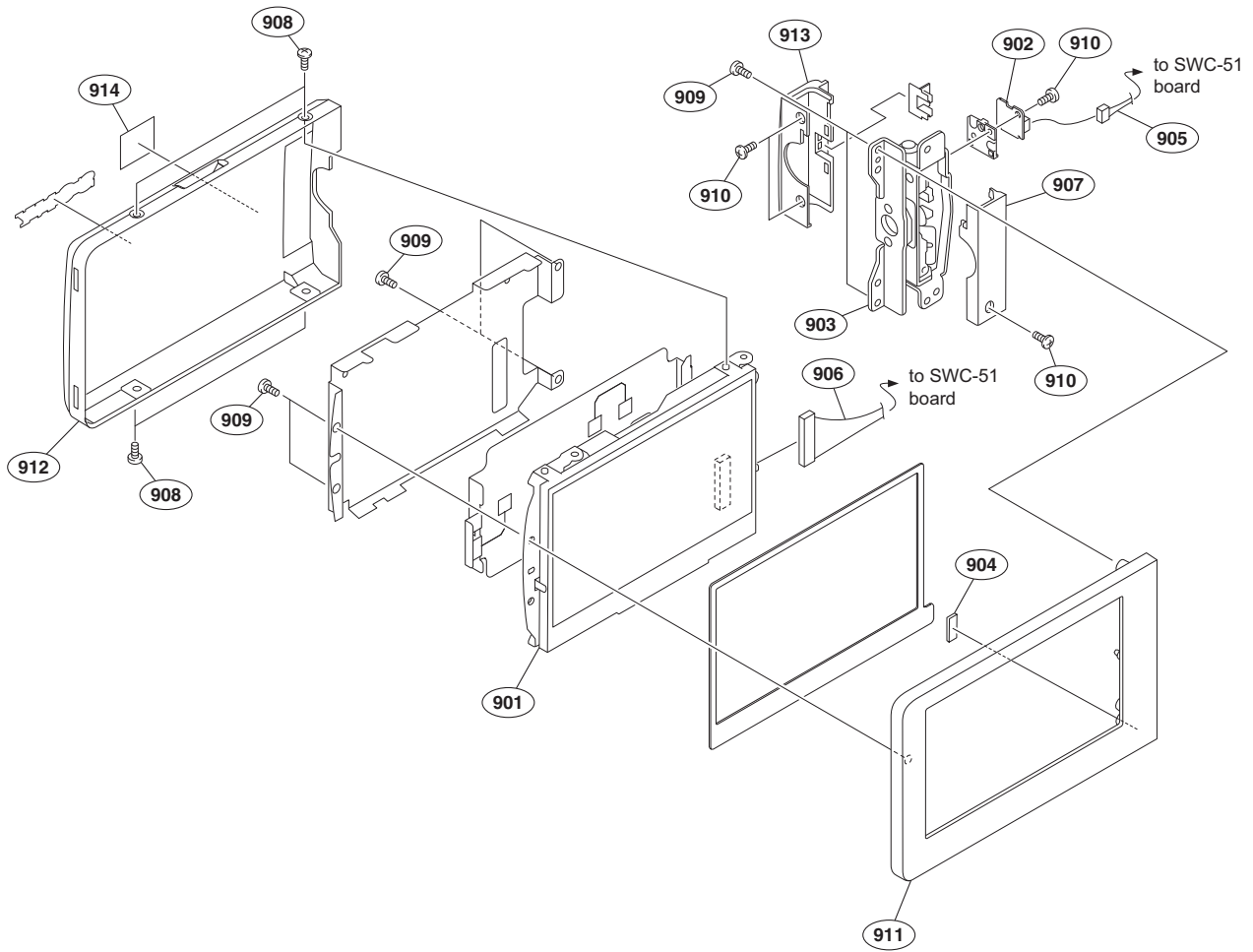
No.	Part No.	SP	Description
701	A-1814-746-A	s	EVF FRONT ASSY
702	A-1814-747-A	s	EVF REAR ASSY
703	X-2515-730-2	s	LOUPE ASSY
704	1-811-033-11	s	LCD MODULE
705	1-873-733-11	s	PWB, FP-776 FLEXIBLE
706	3-060-588-01	s	SPACER, LOCK
707	3-080-203-31	s	SREW (M2), LOCK ACE,P2
708	3-288-585-01	s	CASE, PANEL
709	3-288-586-01	s	LID, PANEL
710	3-288-591-01	s	SHEET, VF PROTECTION
711	4-275-142-01	s	EVF REAR CABINET
712	4-275-143-01	s	EYE CUP

Inside panel assembly



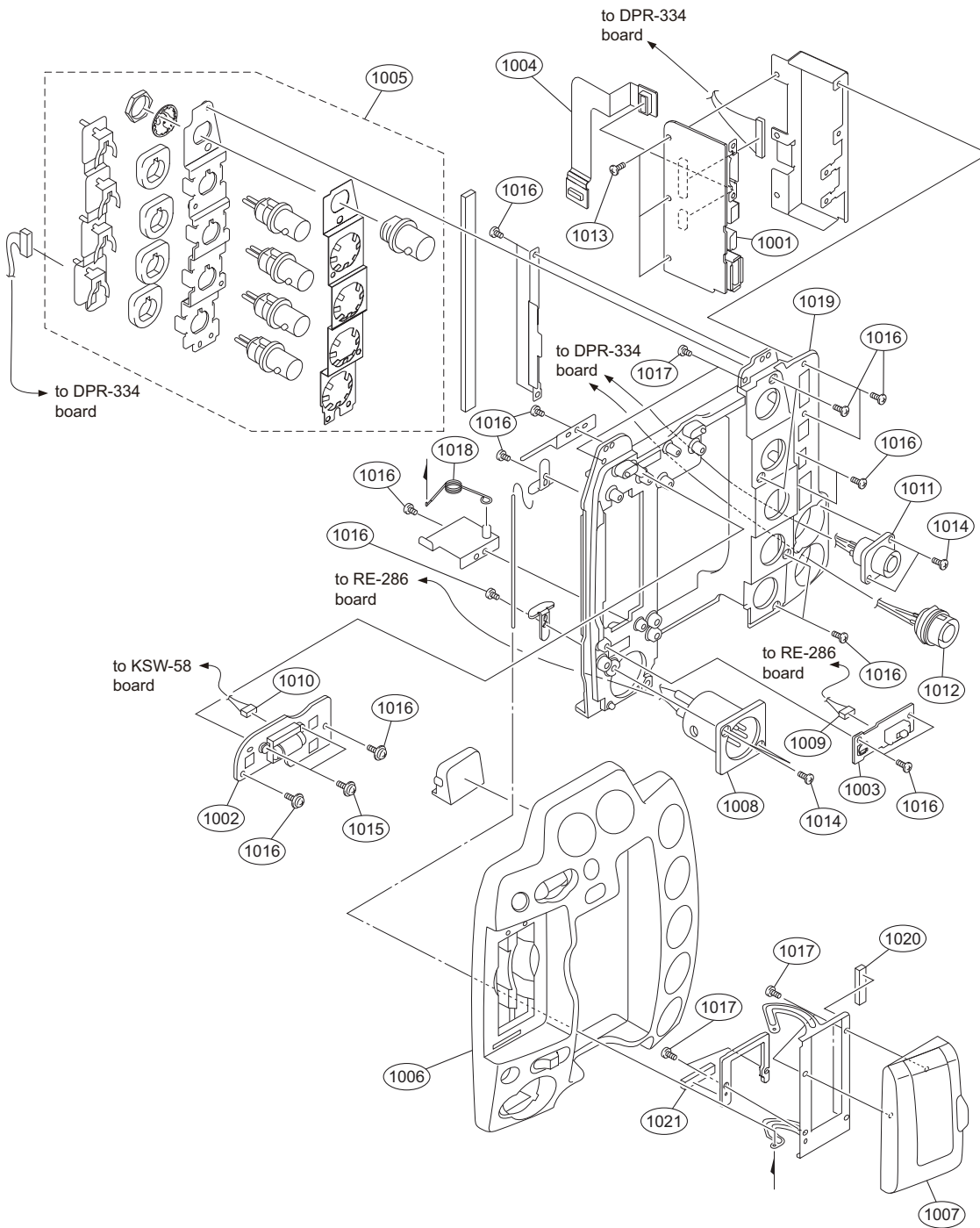
No.	Part No.	SP	Description	No.	Part No.	SP	Description
801	A-1799-079-A	s	MOUNTED CIRCUIT BOARD, SW-1505	821	4-275-089-01	s	RAIL, SLIDE
802	A-1799-084-A	s	MOUNTED CIRCUIT BOARD, SWC-51	822	4-275-090-01	s	SWITCH, SLIDE
803	A-1799-152-A	s	MOUNTED CIRCUIT BOARD, SW-1510	823	4-275-092-01	s	UP, POP
804	X-2580-841-1	s	ARM ASSY, LOCK	824	4-275-093-01	s	BUTTON (5)
805	X-2580-842-1	s	INSIDE PANEL ASSY	825	4-275-239-01	s	COVER, LCD HARNESS
806	1-480-457-31	s	BLOCK, AU VOLUME	826	4-275-242-01	s	KEY TOP
807	1-838-741-11	s	CABLE, FLEXIBLE FLAT (20 CORE)				
808	3-080-206-21	s	SCREW, TAPPING, P2				
809	3-870-139-01	s	SPRING, HELICAL TORSION				
810	3-878-080-01	s	SPACER, LIGHT INTERCEPTION				
811	3-968-729-52	s	SCREW (M2), LOCK ACE, P2				
812	4-275-076-01	s	KNOB, LOCK				
813	4-275-077-01	s	SPRING (LCD LOCK)				
814	4-275-078-01	s	BRACKET, LOCK				
815	4-275-079-01	s	SLEEVE (LCD LOCK)				
816	4-275-080-01	s	PANEL (SUB), INSIDE				
817	4-275-083-01	s	SPRING, HELICAL TORSION COIL				
818	4-275-085-01	s	SLIDE RAIL BL				
819	4-275-086-01	s	SWITCH (BL), SLIDE				
820	4-275-087-01	s	HOLDER (DU)				

LCD assembly



No.	Part No.	SP	Description
901	A-1748-439-A	s	3.5 INCH LCD ASSY
902	A-1786-301-A	s	MOUNTED CIRCUIT BOARD, DET-50
903	X-2580-838-1	s	HINGE ASSY
904	1-471-483-11	s	MAGNET, LCD
905	1-967-679-11	s	HARNESS, SUB (LCD DET)
906	1-967-687-11	s	HARNESS (COLOR LCD)
907	3-060-694-11	s	COVER (REAR), HINGE
908	3-080-203-31	s	SREW (M2), LOCK ACE,P2
909	3-968-729-51	s	SCREW (M2), LOCK ACE, P2
910	3-989-735-11	s	SCREW (M1.7), LOCK ACE, P2
911	4-275-060-01	s	BEZEL, LCD
912	4-275-061-02	s	COVER, LCD
913	4-275-063-01	s	COVER, HINGE
914	4-275-281-01	s	EMBLEM (L20), CINEALTA

Rear panel assembly



No.	Part No.	SP	Description
1001	A-1799-074-A	s	MOUNTED CIRCUIT BOARD, DIF-209
1002	A-1799-081-A	s	MOUNTED CIRCUIT BOARD, SW-1509
1003	A-1799-082-A	s	MOUNTED CIRCUIT BOARD, PSW-96
1004	A-1799-147-A	s	MOUNTED CIRCUIT BOARD, HN-372
1005	A-1799-150-A	s	MOUNTED CIRCUIT BOARD, IO-250
1006	X-2580-839-2	s	COVER ASSY, REAR PANEL
1007	X-2580-840-1	s	COVER ASSY (SXS)
1008	1-967-669-11	s	HARNESS, SUB (DC IN)
1009	1-967-670-12	s	HARNESS, SUB (POWER SW)
1010	1-967-671-11	s	HARNESS, SUB (REAR SW)
1011	1-967-672-11	s	HARNESS, SUB (RM)
1012	1-967-673-12	s	HARNESS, SUB (3D)
1013	3-080-203-31	s	SREW (M2), LOCK ACE, P2

No.	Part No.	SP	Description
1014	3-637-901-11	s	SCREW M2.6X5
1015	3-729-013-21	s	SCREW (M1.4X2.5), WASHERHEAD (+P)
1016	3-968-729-52	s	SCREW (M2), LOCK ACE, P2
1017	3-080-206-21	s	SCREW, TAPPING, P2
1018	4-275-131-02	s	SXS SPRING (0.6)
1019	4-275-134-01	s	PANEL, REAR
1020	4-277-556-02	s	SXS CUSHION
1021	4-279-161-01	s	SXS SUB CUSHION

Viditec

Humberto 1° 2889 - C1231ACE - Bs As, Argentina
 Tel: +54 11 4122-1200 Fax: +54 11 4308-5493
ingenieria@viditec.com.ar
viditec.com