

**SONY**<sup>®</sup>

SOLID-STATE MEMORY CAMCORDER

**PMW-F5**  
**PMW-F55**



**SxS** **HDMI**

**XAVC**

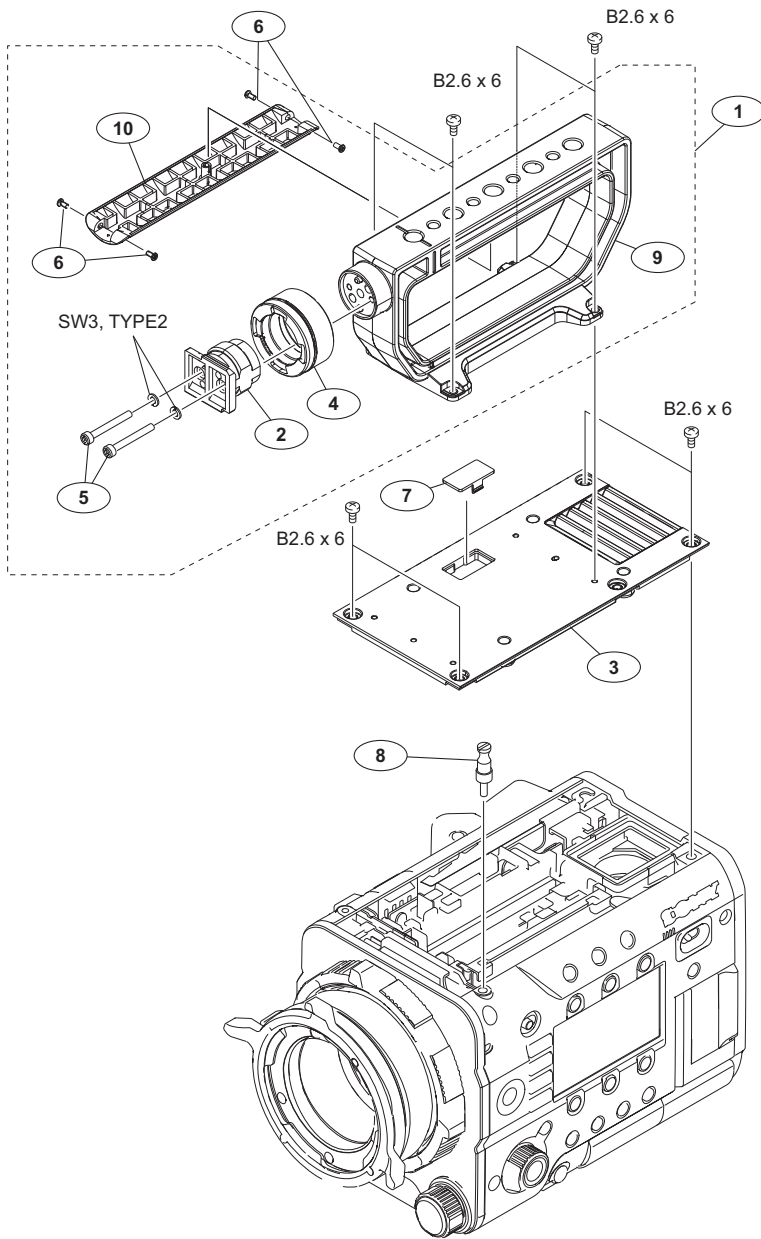
**MPEG HD422**

**SERVICE MANUAL**

1st Edition

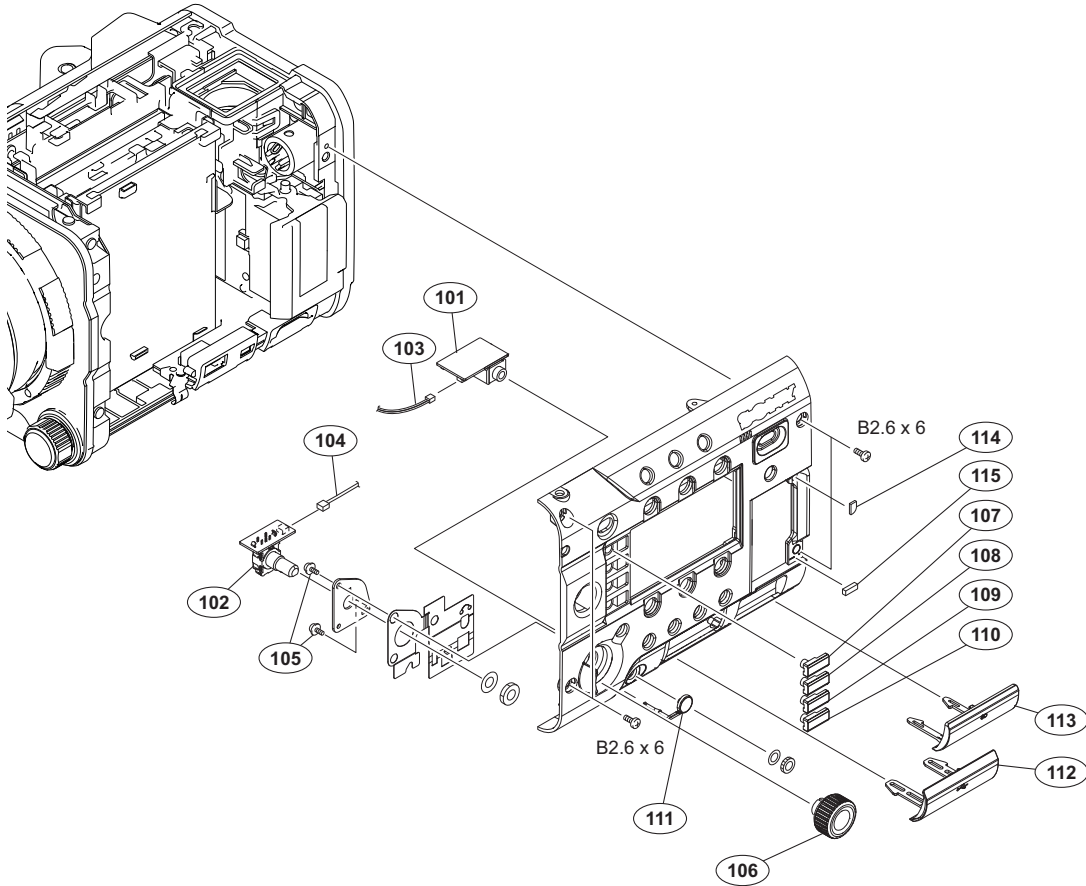
## 6-2. Exploded Views

### Handle assembly



No.	Part No.	SP Description
1	A-1927-754-A	s HANDLE ASSY
2	A-8278-412-J	s SHOE ASSY, VF
3	X-2586-795-1	s TOP COVER ASSY
4	3-627-853-07	s SHOE, SLIDE
5	3-711-765-01	s BOLT (M3), HEXAGON SOCKET
6	3-719-381-02	s SCREW (M2X4)
7	4-458-554-01	s COVER, USB TOP
8	4-458-622-01	s MEASURE HOOK
9	4-458-854-02	s HANDLE
10	4-458-855-02	s COVER, HANDLE
	7-621-773-95	s SCREW +B 2.6X6
	7-623-208-22	s SW 3, TYPE 2

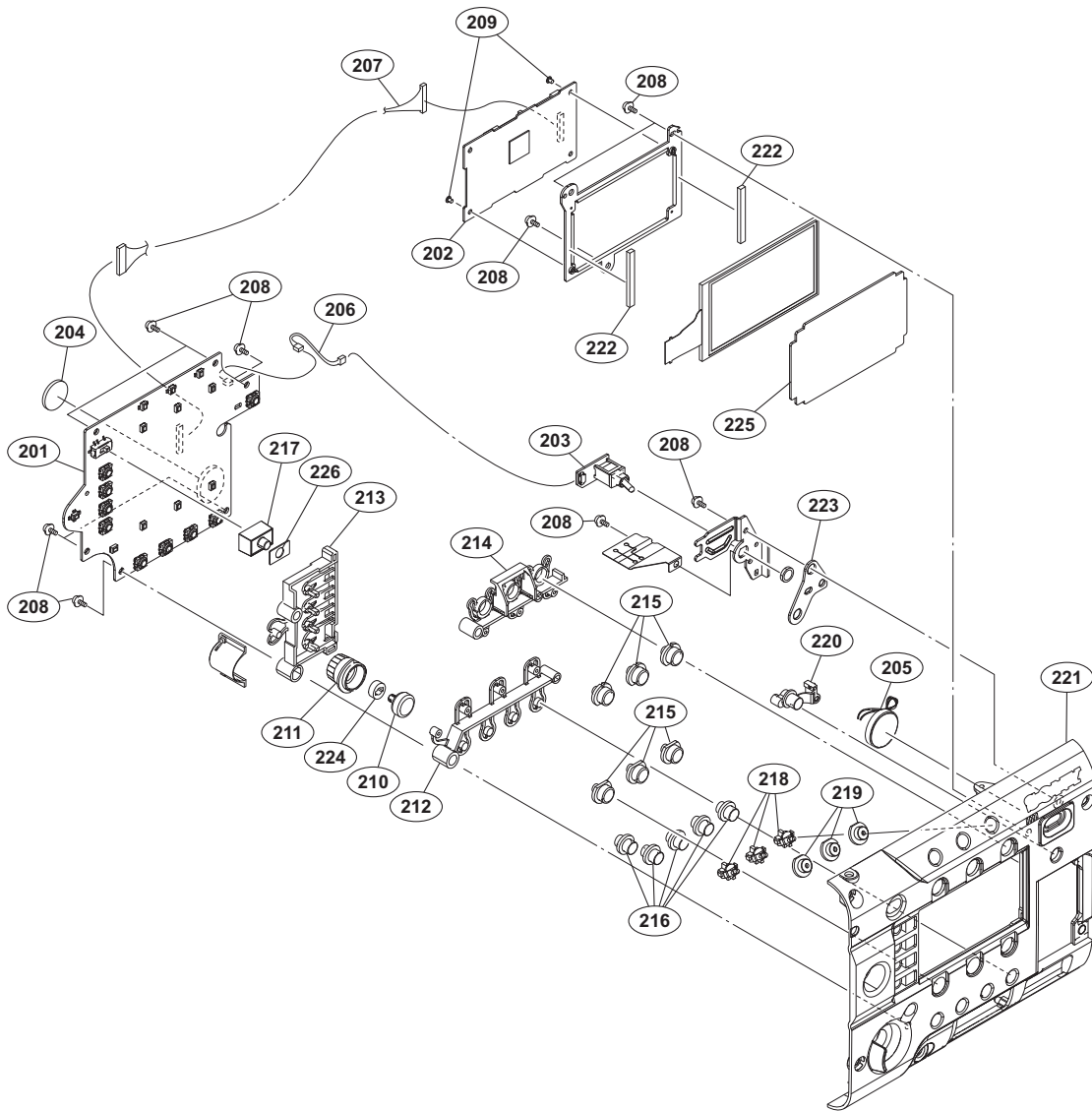
## Inside panel 1



No.	Part No.	SP Description
101	A-1908-363-A s	MOUNTED CIRCUIT BOARD, HP-161
102	A-1908-441-A s	MOUNTED CIRCUIT BOARD, SW-1569
103	1-969-452-11 s	HARNESS, SUB (HP-KY)
104	1-969-453-11 s	HARNESS, SUB (KY-SW)
105	2-640-315-02 o	SCREW (M2X5), SMALL, +P, SW
106	4-458-650-01 s	DIAL KNOB (MSD)
107	4-458-655-01 s	SW TOP (A)
108	4-458-655-11 s	SW TOP (A)
109	4-458-655-21 s	SW TOP (A)
110	4-458-655-31 s	SW TOP (A)
111	4-458-663-01 s	CAP, HP
112	4-458-664-01 s	COVER (IN SIDE) A
113	4-458-665-01 s	COVER (IN SIDE) B
114	4-458-673-01 s	CUSHION (LID)
115	4-458-674-01 s	CUSHION (LID) (B)

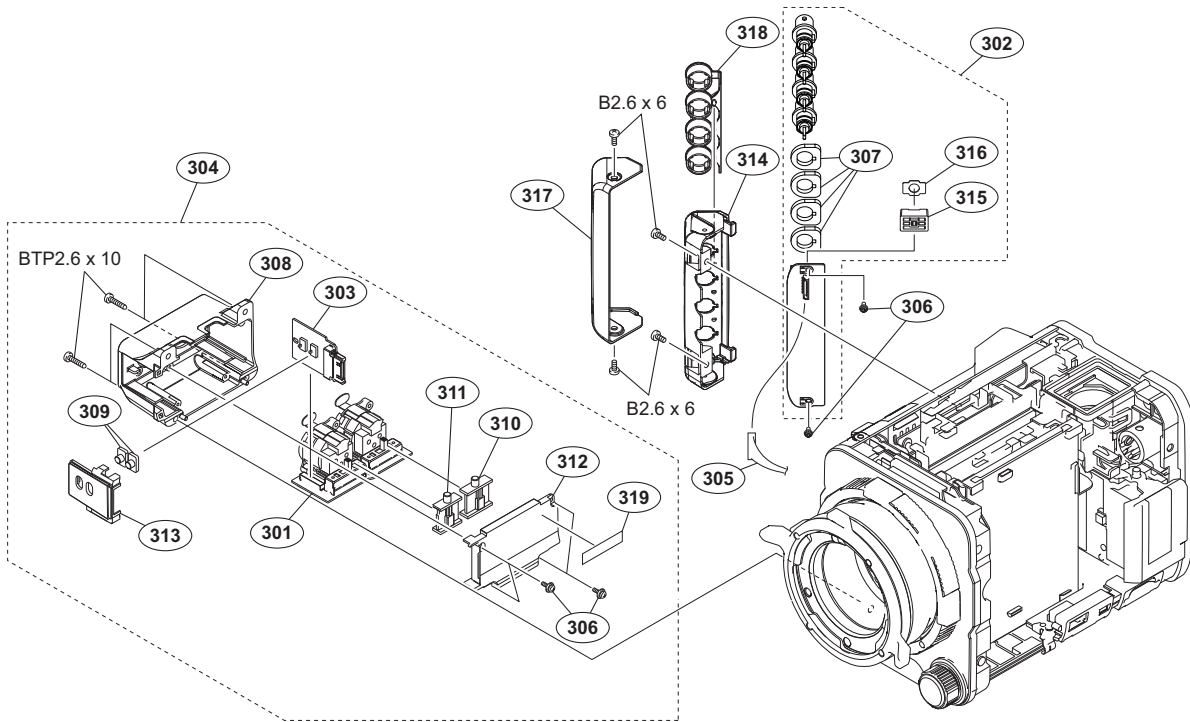
7-621-773-95 s SCREW +B 2.6X6

## Inside panel 2



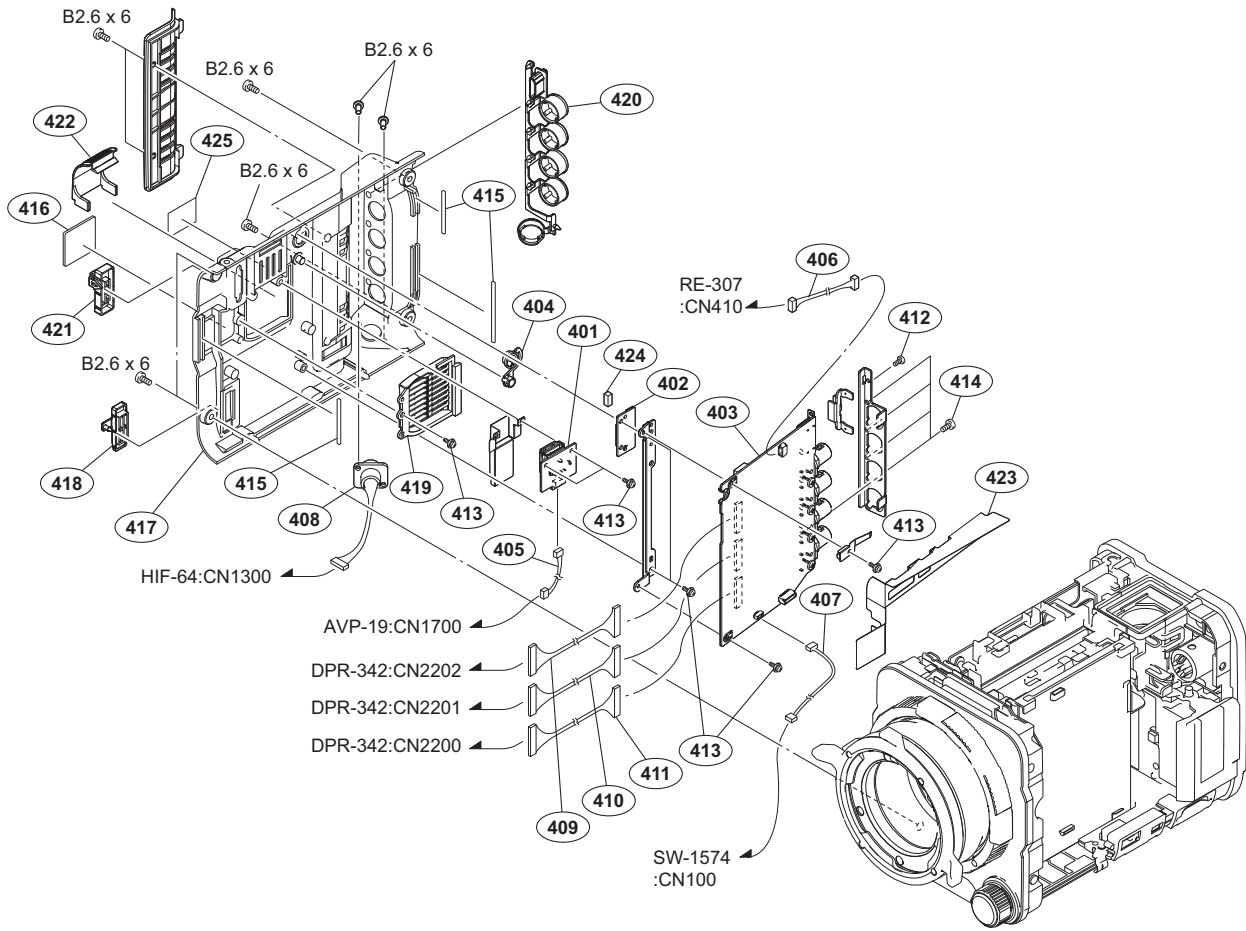
No.	Part No.	SP Description	No.	Part No.	SP Description
201	A-1945-777-A	s MOUNTED CIRCUIT BOARD, KY-686	223	4-458-669-01	s CUSHION (PW)
202	A-1908-350-A	s MOUNTED CIRCUIT BOARD, IF-1208	224	4-458-670-01	s REC, CUSHION
203	A-1908-447-A	s MOUNTED CIRCUIT BOARD, PSW-99	225	4-458-671-01	s PROTECTOR(LCD)
204	△ 1-528-174-72	s BATTERY, LITHIUM (CR2032 TYPE)	226	4-458-672-01	s SHEET, SW-INDICATOR
205	1-858-706-11	s LOUDSPEAKER (1.8CM)			
206	1-969-462-11	s HARNESS, SUB (KY-PSW)			
207	1-969-483-11	s WIRE, CONNECTOR WITH LEAD (KY-SLCD)			
208	2-640-315-02	o SCREW (M2X5), SMALL, +P, SW			
209	3-287-278-11	s M1.7X2 (D3X0.3)			
210	4-458-649-01	s REC BUTTON			
211	4-458-651-01	s PRISM, INDICATOR, REC			
212	4-458-652-01	s SW, ACTUATOR (B)			
213	4-458-653-01	s SW, ACTUATOR (A)			
214	4-458-654-01	s SW, ACTUATOR (C)			
215	4-458-656-01	s SW TOP (F-SEL)			
216	4-458-657-01	s SW, TOP (MENU)			
217	4-458-658-01	s SW KNOB			
218	4-458-659-01	s PRISM, INDICATOR (ASSIGN)			
219	4-458-660-01	s SW TOP (ASSIGN)			
220	4-458-661-01	s SW TOP (SSEL)			
221	4-458-662-01	s PANEL INSIDE			
222	4-458-668-01	s CUSHION (LCD)			

## Outside panel 1



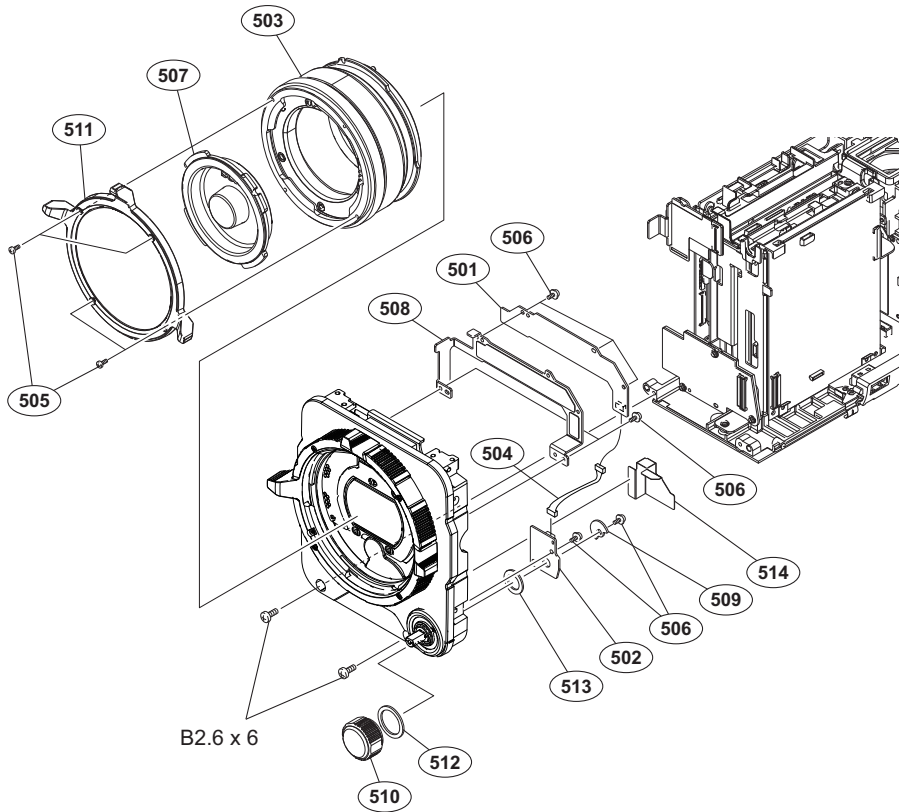
No.	Part No.	SP Description
301	A-1908-355-A	s MOUNTED CIRCUIT BOARD, AXM-47
302	A-1908-356-A	s MOUNTED CIRCUIT BOARD, CN-3527
303	A-1908-365-A	s MOUNTED CIRCUIT BOARD, CN-3569
304	A-1922-132-A	s XLR BOX ASSY
305	1-969-460-11	s HARNESS, SUB (HIF-CN)
306	2-640-315-02	o SCREW (M2X5), SMALL, +P, SW
307	4-428-365-01	s SPACER, V-OUT
308	4-458-543-01	s CASE (AUBOX)
309	4-458-556-01	s KNOB (2P SLIDE)
310	4-458-557-01	s KNOB (AU1), SWITCH
311	4-458-558-01	s KNOB (AU), SWITCH
312	4-458-561-01	s PANEL (AUBOX), BACK
313	4-458-562-01	s PANEL (AUBOX), SIDE
314	4-458-856-02	s FRAME (BNC BOX)
315	4-458-857-01	s KNOB (TC), SWITCH
316	4-458-858-01	s PLATE, TC ORNAMENTAL
317	4-458-859-02	s CASE (BNC BOX)
318	4-458-860-02	s CAP, BNC
319	4-462-463-01	s SHEET, AU BOX
	7-621-773-95	s SCREW +B 2.6X6
	7-685-535-19	s SCREW +BTP 2.6X10 TYPE2 N-S

## Outside panel 2



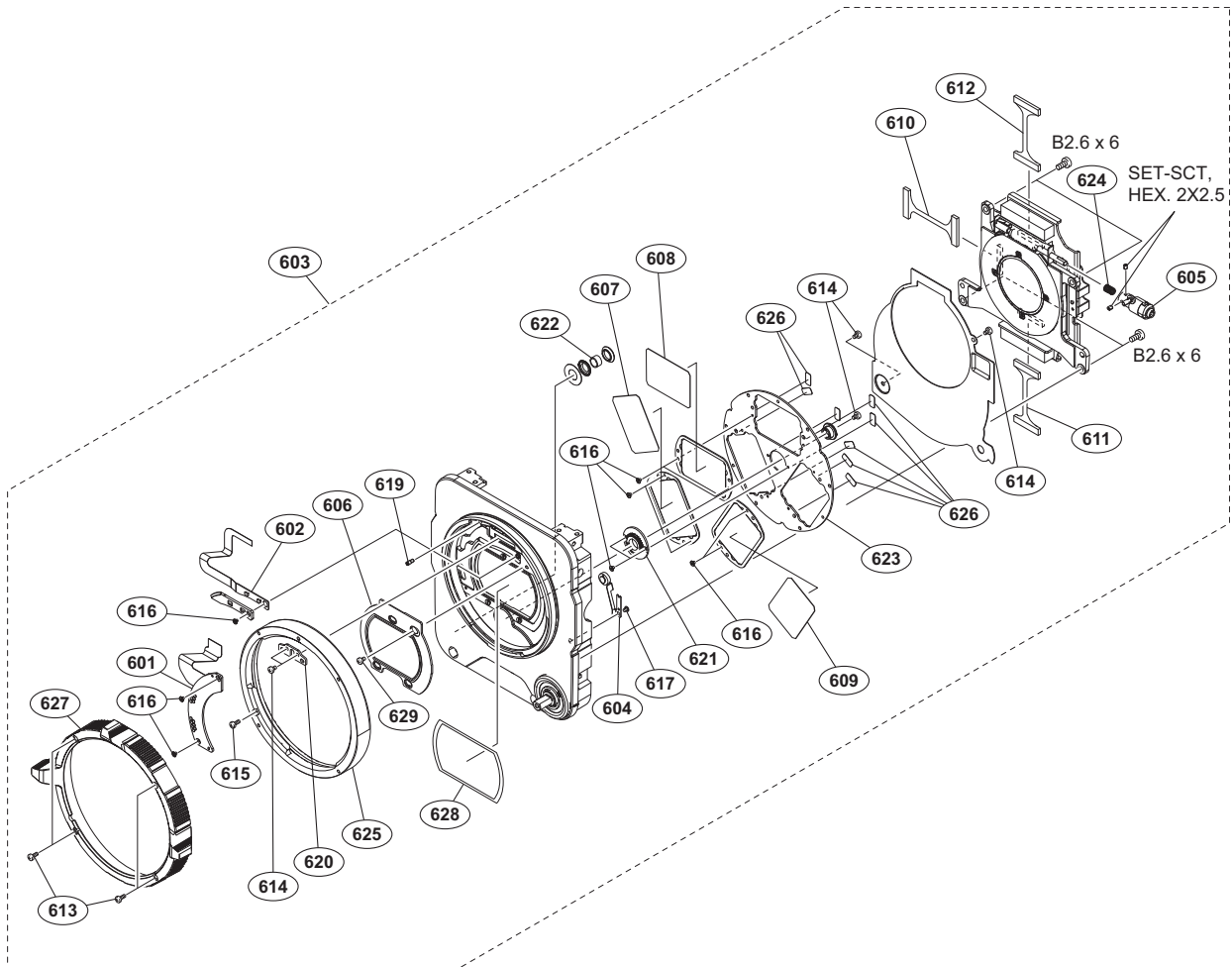
No.	Part No.	SP Description
401	A-1908-347-A	s MOUNTED CIRCUIT BOARD, CN-3559
402	A-1908-446-A	s MOUNTED CIRCUIT BOARD, SW-1574
403	A-1912-753-A	s MOUNTED CIRCUIT BOARD, HIF-64
404	X-2586-793-1	s OUTSIDE SW ASSY
405	1-969-454-11	s HARNESS, SUB (AVP-CN2)
406	1-969-458-11	s HARNESS, SUB (RE-HIF)
407	1-969-463-11	s HARNESS, SUB (HIF-SW)
408	1-969-464-11	s HARNESS, SUB (HIF-RMT)
409	1-969-472-11	s WIRE, CONNECTOR WITH LEAD (BI-DPR1 DPR-)
410	1-969-482-11	s WIRE, CONNECTOR WITH LEAD (DPR-HIF3)
411	1-969-484-11	s WIRE, CONNECTOR WITH LEAD (DPR-HIF2)
412	2-630-005-31	s SCREW (M2), NEW TRUSTER, P2
413	2-640-315-02	o SCREW (M2X5), SMALL, +P, SW
414	3-364-941-01	s SCREW (+B) (2.6X5), NYLOK
415	3-624-455-01	s TUBE, SHIELD
416	4-415-168-01	s EMBLEM, CINEALTA
417	4-458-547-02	s PANEL, OUT SIDE
418	4-458-555-01	s CAP, AU
419	4-458-559-01	s LOUVER (OUT SIDE)
420	4-458-560-01	s CAP, OUTSIDE
421	4-458-567-01	s CAP, VF
422	4-458-568-01	s WINDOW (WIFI)
423	4-458-576-01	s GUIDE, OUT SIDE HARNESS
424	4-458-967-01	s CUSHION, OUTSIDE SW
425	4-462-464-01	s SHEET, OUT SIDE USB
	7-621-773-95	s SCREW +B 2.6X6

## Front panel assembly



No.	Part No.	SP Description
501	A-1908-362-A	s MOUNTED CIRCUIT BOARD, HN-400
502	A-1908-445-A	s MOUNTED CIRCUIT BOARD, SE-1111
503	A-1922-878-A	s PL MOUNT ADAPTER ASSY
504	1-969-461-11	s HARNESS, SUB (HN-SE1)
505	2-630-005-31	s SCREW (M2), NEW TRUSTER, P2
506	2-640-315-02	o SCREW (M2X5), SMALL, +P, SW
507	4-104-999-02	s CAP, MOUNT
508	4-458-600-01	s PLATE, HN
509	4-458-614-01	s REFLECTOR, ND
510	4-458-617-01	s DIAL, ND
511	4-458-620-01	s LEVER, RING
512	4-458-629-02	s SHEET, ND DIAL
513	4-458-630-02	s SHEET, ND SHAFT
514	4-458-635-02	s SE GUARD
	7-621-773-95	s SCREW +B 2.6X6

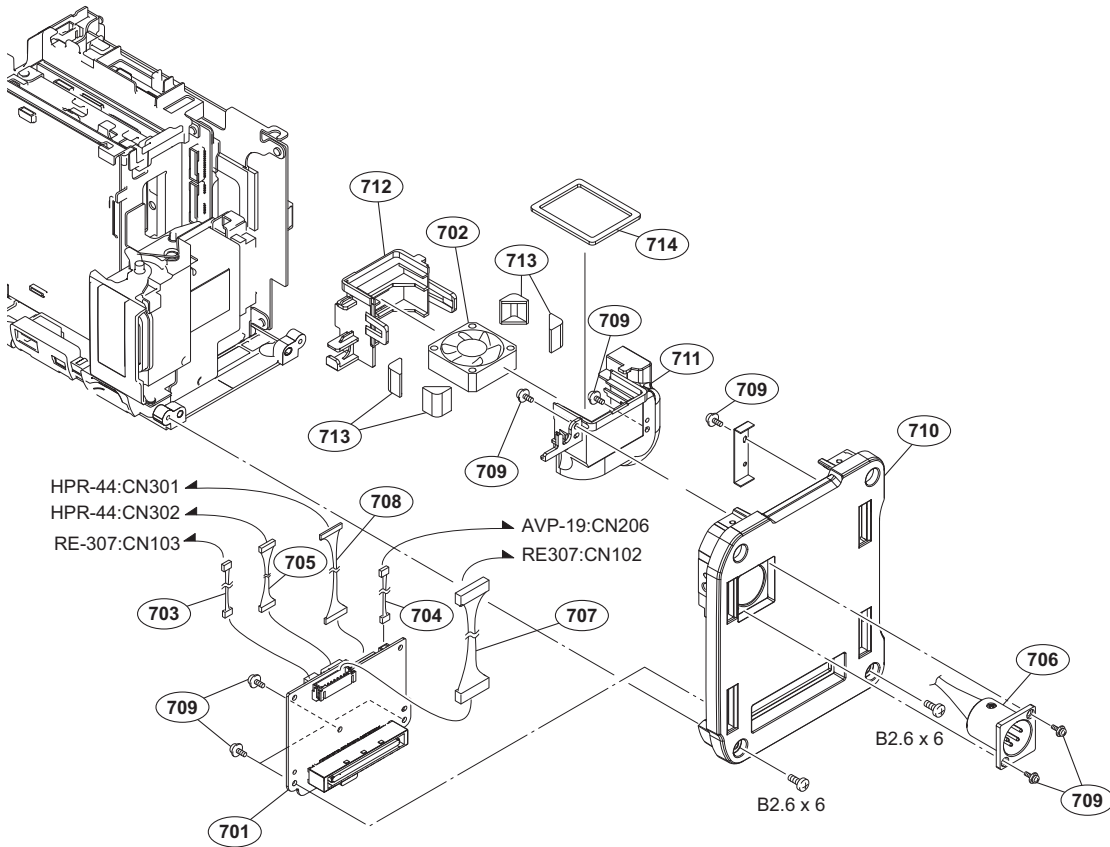
## Front block assembly



No.	Part No.	SP Description	No.	Part No.	SP Description
601	A-1908-348-A	s MOUNTED CIRCUIT BOARD, IR-57	627	4-458-641-01	s LEVER,RING FZ (PMW-F5)
602	A-1908-440-A	s MOUNTED CIRCUIT BOARD, SE-1114	628	4-458-641-11	s LEVER,RING FZ (PMW-F55)
603	A-1925-728-A	s FRONT BLOCK ASSY (PMW-F5)	629	4-462-952-01	s SHEET, OLPF
	A-1925-729-A	s FRONT BLOCK ASSY (PMW-F55)		4-672-836-01	s SCREW ,M2 SPECIAL HEAD,EG GRIP
604	X-2586-796-1	s PLATE ASSY, CLICK			
605	X-2586-797-1	s SLIP CLUTCH ASSY	7-621-731-08	s SET-SCT,HEX. 2X2.5,FLAT POINT	
606	1-856-508-11	s FILTER UNIT, OPTICAL	7-621-773-95	s SCREW +B 2.6X6	
607	1-856-509-11	s FILTER, OPTICAL (CLEAR)	7-624-108-04	s STOP RING 4.0, TYPE -E	
608	1-856-510-11	s FILTER, OPTICAL (ND0.9)	7-627-552-38	s SCREW,PRECISION +P 1.7X3	
609	1-856-511-11	s FILTER, OPTICAL (ND1.8)			
610	1-969-470-11	s WIRE, CONNECTOR WITH LEAD (BI-DPR3)			
611	1-969-471-11	s WIRE, CONNECTOR WITH LEAD (BI-DPR2)			
612	1-969-472-11	s WIRE, CONNECTOR WITH LEAD (BI-DPR1)			
613	2-630-005-31	s SCREW (M2),NEW TRUSTER,P2			
614	2-655-582-01	s SCREW 0+P2 M2 NEWTRU-STAR			
615	3-080-198-41	s SCREW (M1.7), LOCK ACE,P2			
616	3-215-158-01	s SCREW M1.4X1.6, 0 +Z			
617	3-287-278-11	s M1.7X2 (D3X0.3)			
619	4-458-594-01	s FZ STOPPER			
620	4-458-595-01	s PLATE, GUIDE			
621	4-458-596-01	s GEAR, ND TURRET			
622	4-458-597-01	s COLLAR, ND			
623	4-458-608-01	s ND TURRET			
624	4-458-618-01	s SPRING, SCREW			
625	4-458-619-01	s RING, MOUNT			
626	4-458-632-02	s TAPE, ND TURRET			

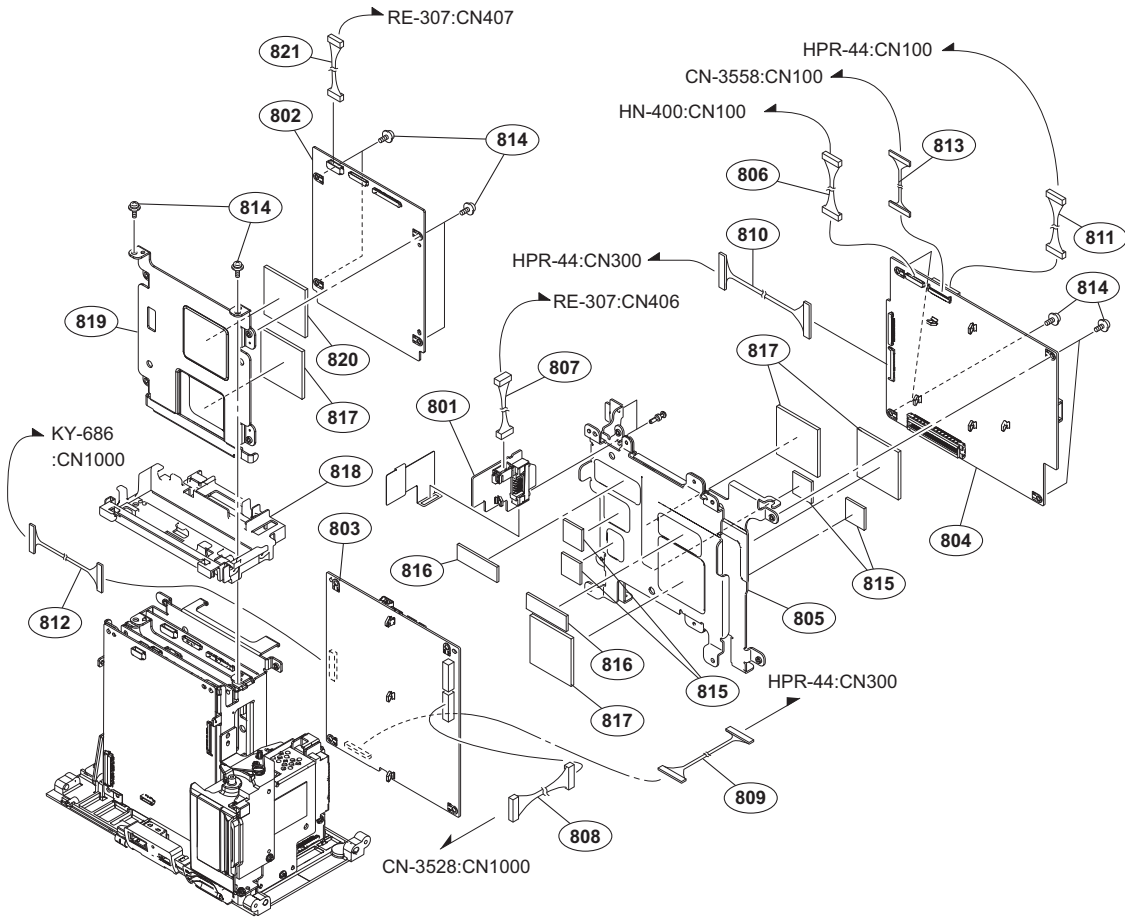


## Rear panel assembly



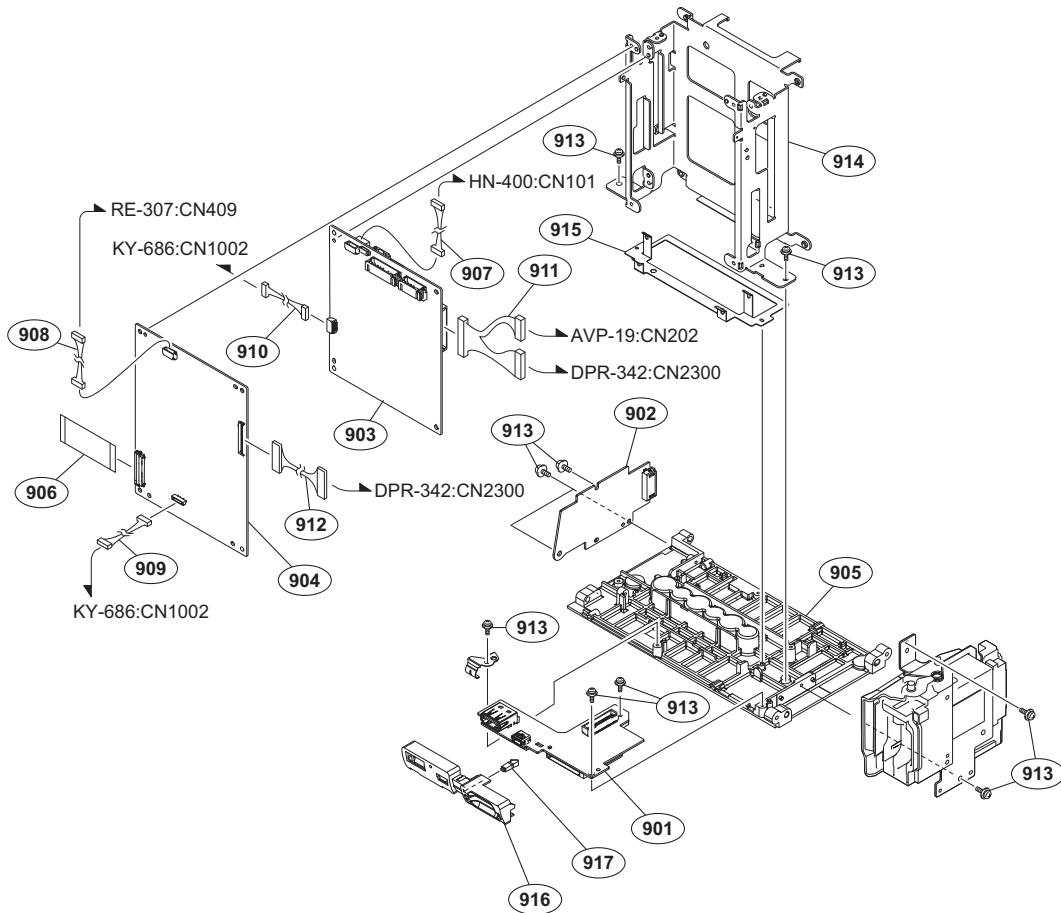
No.	Part No.	SP Description
701	A-1945-778-A	s MOUNTED CIRCUIT BOARD, IF-1195
702	△ 1-855-292-11	s FAN, DC (30 SQUARE)
703	1-969-451-11	s HARNESS, SUB (IF-RE2)
704	1-969-455-11	s HARNESS, SUB (AVP-IF)
705	1-969-456-11	s HARNESS, SUB (HPR-IF2)
706	1-969-457-11	s HARNESS, SUB (DC-RE)
707	1-969-459-11	s HARNESS, SUB (IF-RE1)
708	1-969-481-11	s WIRE, CONNECTOR WITH LEAD (HPR-IF1)
709	2-640-315-02	o SCREW (M2X5), SMALL, +P, SW
710	4-458-846-01	s PANEL, REAR
711	4-458-847-02	s DUCT (A)
712	4-458-848-01	s DUCT (B)
713	4-458-849-01	s FAN HOLDER
714	4-458-851-01	s CUSHION (DUCT)
	7-621-773-95	s SCREW +B 2.6X6

# Chassis 1



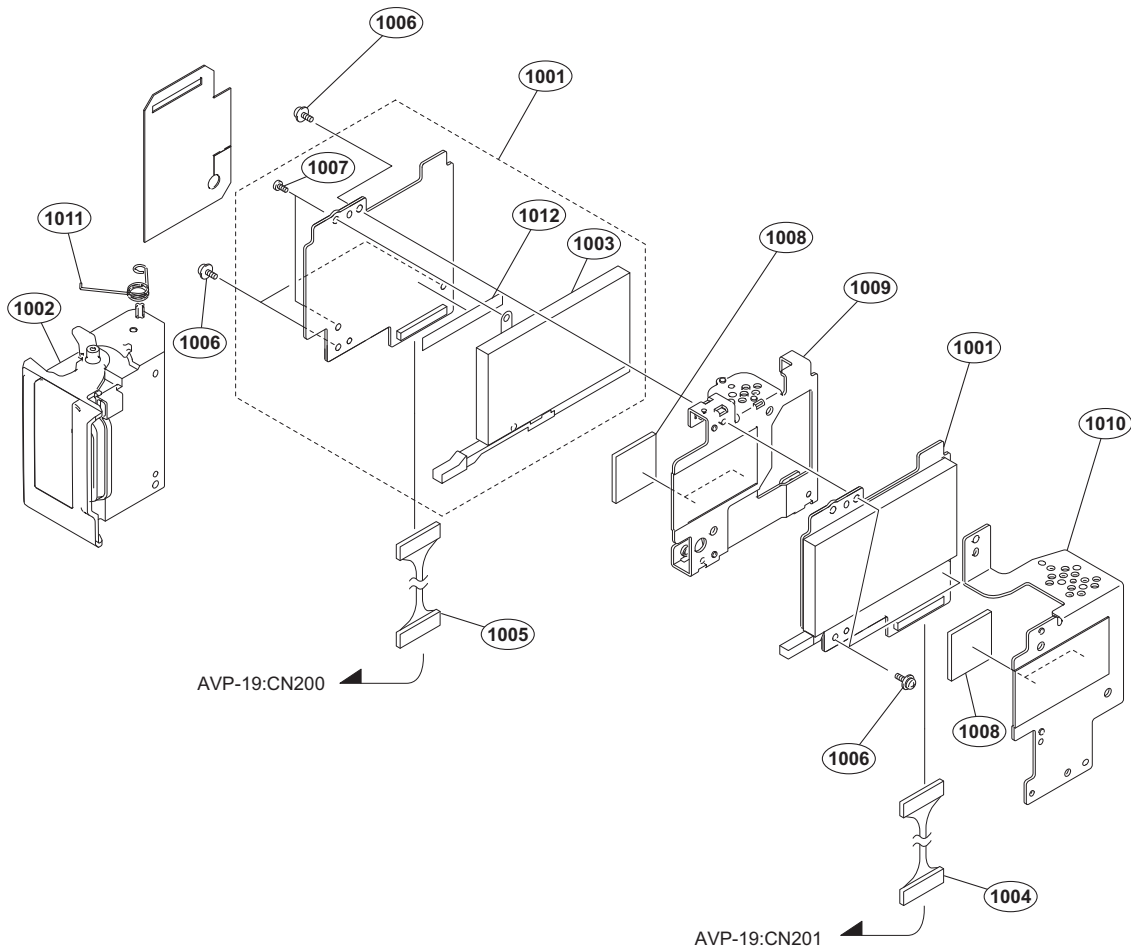
No.	Part No.	SP Description
801	A-1908-346-A	s MOUNTED CIRCUIT BOARD, CN-3558
802	A-1912-750-A	s MOUNTED CIRCUIT BOARD, HPR-44
803	A-1912-751-A	s MOUNTED CIRCUIT BOARD, AVP-19
804	A-1912-752-A	s MOUNTED CIRCUIT BOARD, DPR-342
805	X-2586-792-1	s PLATE, ASSY_DPR_AVP
806	1-969-446-11	s HARNESS, SUB (DPR-HN)
807	1-969-447-11	s HARNESS, SUB (RE-CN)
808	1-969-465-11	s HARNESS, SUB (AVP-CN1)
809	1-969-473-11	s WIRE, CONNECTOR WITH LEAD (AVP-HPR)
810	1-969-474-11	s WIRE, CONNECTOR WITH LEAD (DPR-HPR1)
811	1-969-475-11	s WIRE, CONNECTOR WITH LEAD (DPR-HPR2)
812	1-969-476-11	s WIRE, CONNECTOR WITH LEAD (AVP-KY)
813	1-969-479-11	s WIRE, CONNECTOR WITH LEAD (DPR-CN)
814	2-640-315-02	o SCREW (M2X5), SMALL, +P, SW
815	4-427-951-02	s RADIATION SHEET C
816	4-427-952-02	s RADIATION SHEET D
817	4-427-955-02	s RADIATION SHEET G
818	4-458-542-02	s CABLE HOLDER MAIN
819	4-458-550-01	s CHASSIS, HPR
820	4-462-217-01	s SHEET (H), RADIATION
821	1-969-445-11	s HARNESS, SUB (RE-HN_RE-HPR)

## Chassis 2



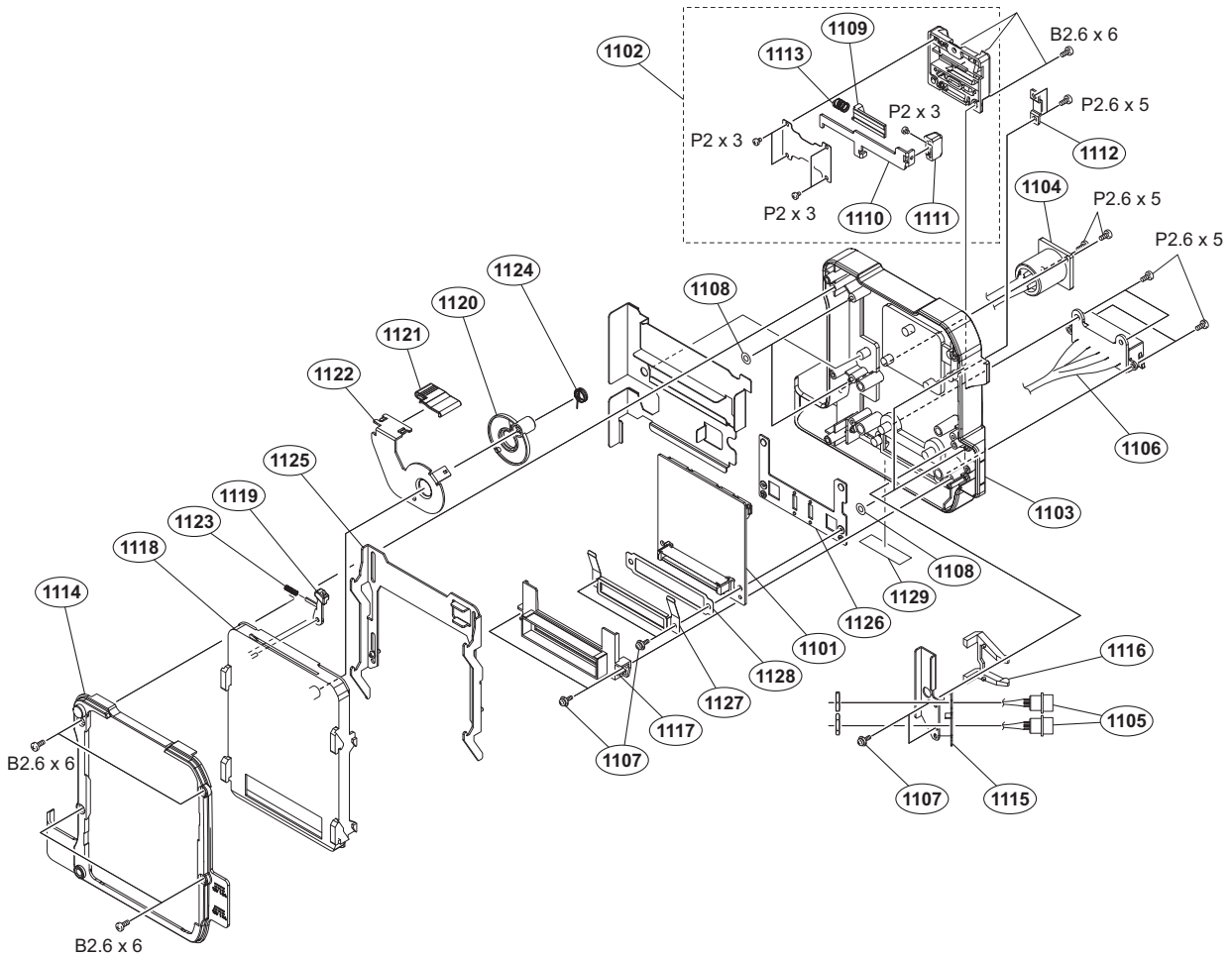
No.	Part No.	SP Description
901	A-1908-357-A	s MOUNTED CIRCUIT BOARD, CN-3528
902	A-1908-358-A	s MOUNTED CIRCUIT BOARD, CN-3530
903	A-1912-748-A	s MOUNTED CIRCUIT BOARD, RE-307
904	A-1912-749-A	s MOUNTED CIRCUIT BOARD, APR-94
905	X-2586-794-2	s BOTTOM COVER ASSY
906	1-836-688-11	s CABLE, FLEXIBLE FLAT (36 CORE)
907	1-969-445-11	s HARNESS, SUB (RE-HN RE-HPR)
908	1-969-448-11	s HARNESS, SUB (RE-APR)
909	1-969-449-11	s HARNESS, SUB (APR-HP)
910	1-969-450-11	s HARNESS, SUB (RE-KY)
911	1-969-466-11	s HARNESS, SUB (RE-DPR_AVP)
912	1-969-478-11	s WIRE, CONNECTOR WITH LEAD (APR-DPR)
913	2-640-315-02	o SCREW (M2X5), SMALL, +P, SW
914	4-458-551-01	s CHASSIS, MAIN
915	4-458-552-01	s PLATE, BOTTOM PWB
916	4-458-666-01	s ESCUTCHEON (USB/SD)
917	4-458-667-01	s LIGHT GUIDE (SD)

## SxS slot assembly



No.	Part No.	SP Description
1001	A-1908-360-A	s MOUNTED CIRCUIT BOARD, EC-74
1002	A-1927-758-A	s BOX, SXS
1003	1-821-531-13	s CONNECTOR, EX CARD (GUIDE UNIT)
1004	1-969-477-11	s WIRE, CONNECTOR WITH LEAD (AVP-EC1)
1005	1-969-480-11	s WIRE, CONNECTOR WITH LEAD (AVP-EC2)
1006	2-640-315-02	o SCREW (M2X5), SMALL, +P, SW
1007	3-968-729-52	s SCREW (M2), LOCK ACE, P2
1008	4-167-983-01	s SHEET, RADIATION
1009	4-458-868-01	s BRACKET (A), SXS
1010	4-458-869-01	s BRACKET (B), SXS
1011	4-458-875-02	s SPRING(SXS)
1012	4-458-876-01	s GUARD (SXS), PATTERN

# Battery adaptor assembly



No.	Part No.	SP Description	No.	Part No.	SP Description
1101	A-1908-351-A	s MOUNTED CIRCUIT BOARD, DC-166	1129	4-462-887-01	s SHEET, BAT ADAPT
1102	A-8278-025-G	s MOUNT,V ASSY			
1103	X-2586-775-1	s _ASSYSUB_BASE,ADAPTER			
1104	1-969-467-11	s HARNESS, SUB (ADPT-DCIN)		7-621-773-95	s SCREW +B 2.6X6
1105	1-969-468-11	s HARNESS, SUB (ADPT-DCOUT)		7-627-553-38	s SCREW,PRECISION +P 2X3
				7-627-556-58	s SCREW +P 2.6X5
1106	1-969-469-11	s HARNESS, SUB (ADPT-BATT)			
1107	2-640-315-02	o SCREW (M2X5), SMALL, +P, SW			
1108	3-052-149-01	s WASHER (2.0)			
1109	3-679-687-02	s LOCK,SLIDE			
1110	3-679-688-03	s LEVER,RELEASE			
1111	3-680-952-02	o KNOB,RELEASE LEVER			
1112	3-697-119-03	s RETAINER			
1113	3-704-964-01	s SPRING,COMPRESSION			
1114	4-458-404-02	s COVER, ADAPTER			
1115	4-458-405-02	s BRACKET, DC (OUT)			
1116	4-458-406-02	s INDICATER, DC-OUT			
1117	4-458-407-01	s GUARD, CN			
1118	4-458-408-02	s SLIDER, LOCK			
1119	4-458-409-01	s LEVER,LOCK			
1120	4-458-410-01	s ARM, SLIDE			
1121	4-458-411-01	s KNOB_LOCK_RELEASE			
1122	4-458-412-02	s LEVER,RELEASE			
1123	4-458-413-01	s SPRING,COMPRESSION			
1124	4-458-414-01	s SPRING_TORSION(POPUP)			
1125	4-458-415-01	s PLATE, SLIDE			
1126	4-458-416-01	s SUPPORT, DC BOARD			
1127	4-458-417-02	s COVER, CN			
1128	4-458-418-01	s SHEET, INSULATING			