

SONY®

Solid-State Memory Camcorder

PXW-FS5

PXW-FS5K

PXW-FS5M2

PXW-FS5M2K



XDCAM

XAVC

AVCHD
Progressive

Exmor
CMOS Sensor



HDMI
HIGH DEFINITION MULTIMEDIA INTERFACE

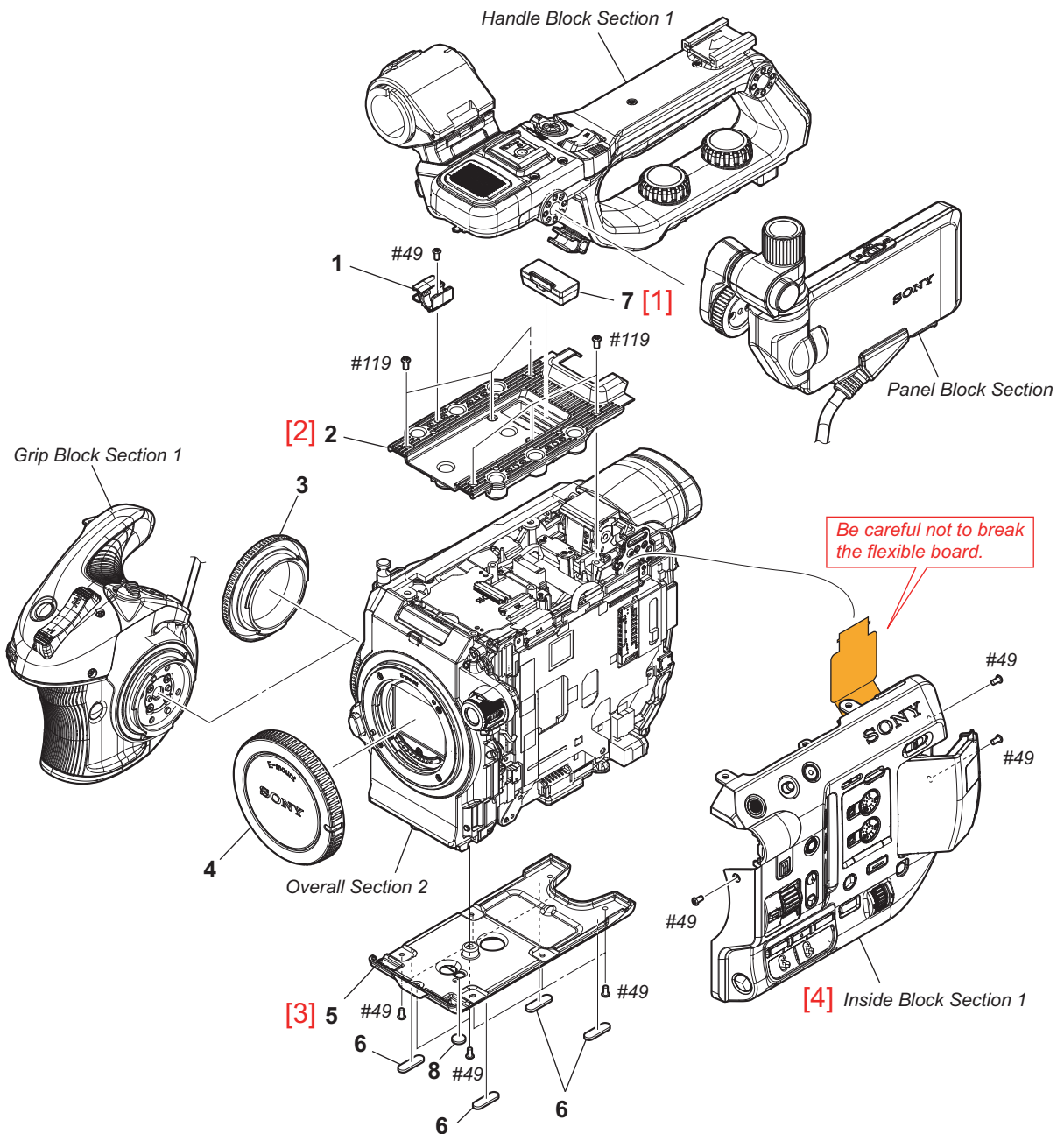


SERVICE MANUAL

1st Edition (Revised 1)

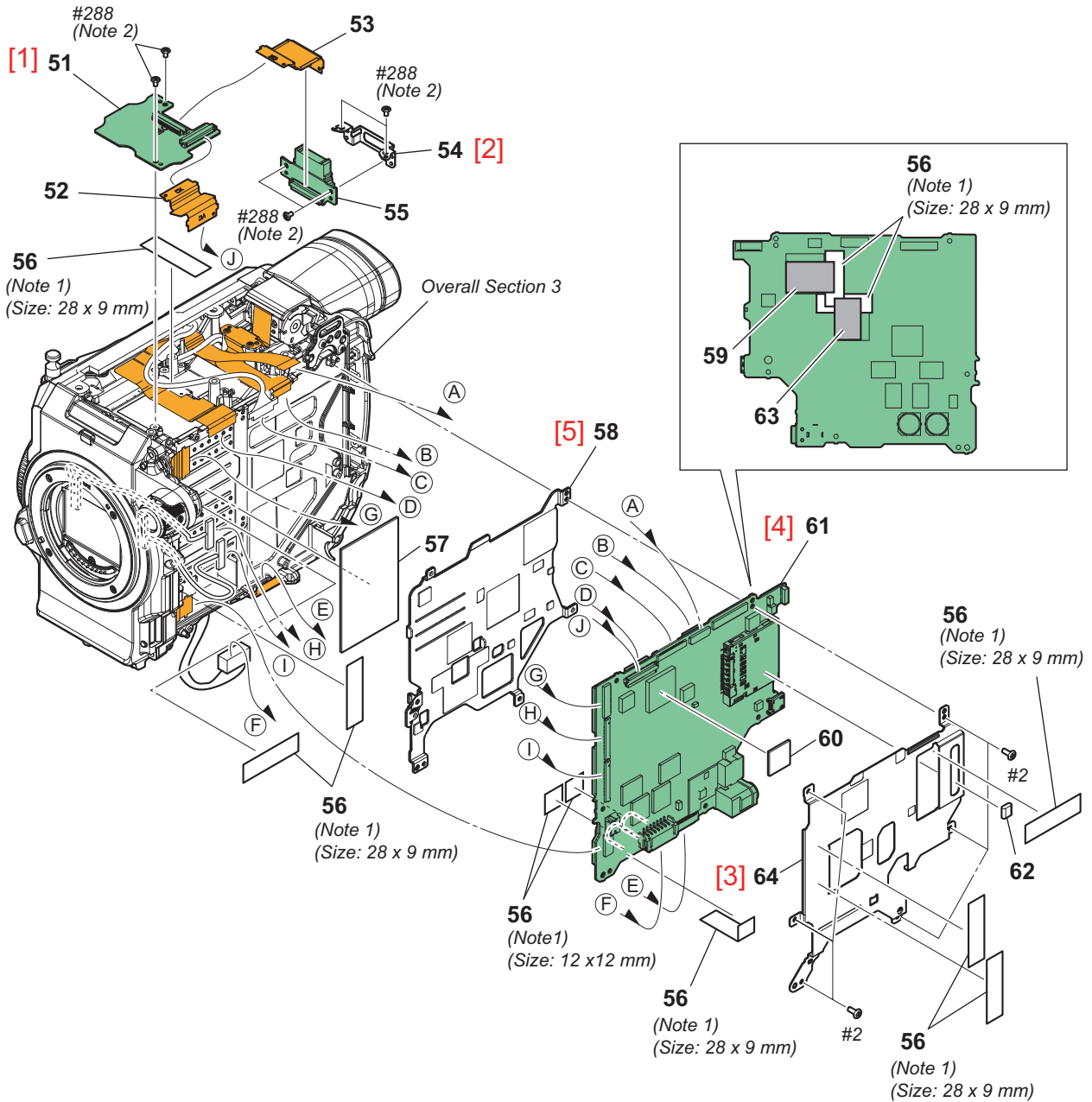
5-2. Exploded View

Overall Section 1



Ref. No. or Q'ty	Part No.	SP Description
1	4-579-745-01	CLAMP (964), CABLE
2	4-576-417-01	CABINET (TOP)
3	4-579-209-01	GRIP MOUNT COVER
4	4-188-536-01	CAP, BODY
5	4-576-419-01	CABINET (BM)
6	4-540-533-01	FOOT (941), RUBBER
7	4-579-210-01	HANDLE CONNECTOR COVER
8	4-587-420-01	LID, BM
#49	2-630-005-31	SCREW (M2), NEW TRUSTER, P2
#119	7-627-556-58	SCREW +P 2.6X5

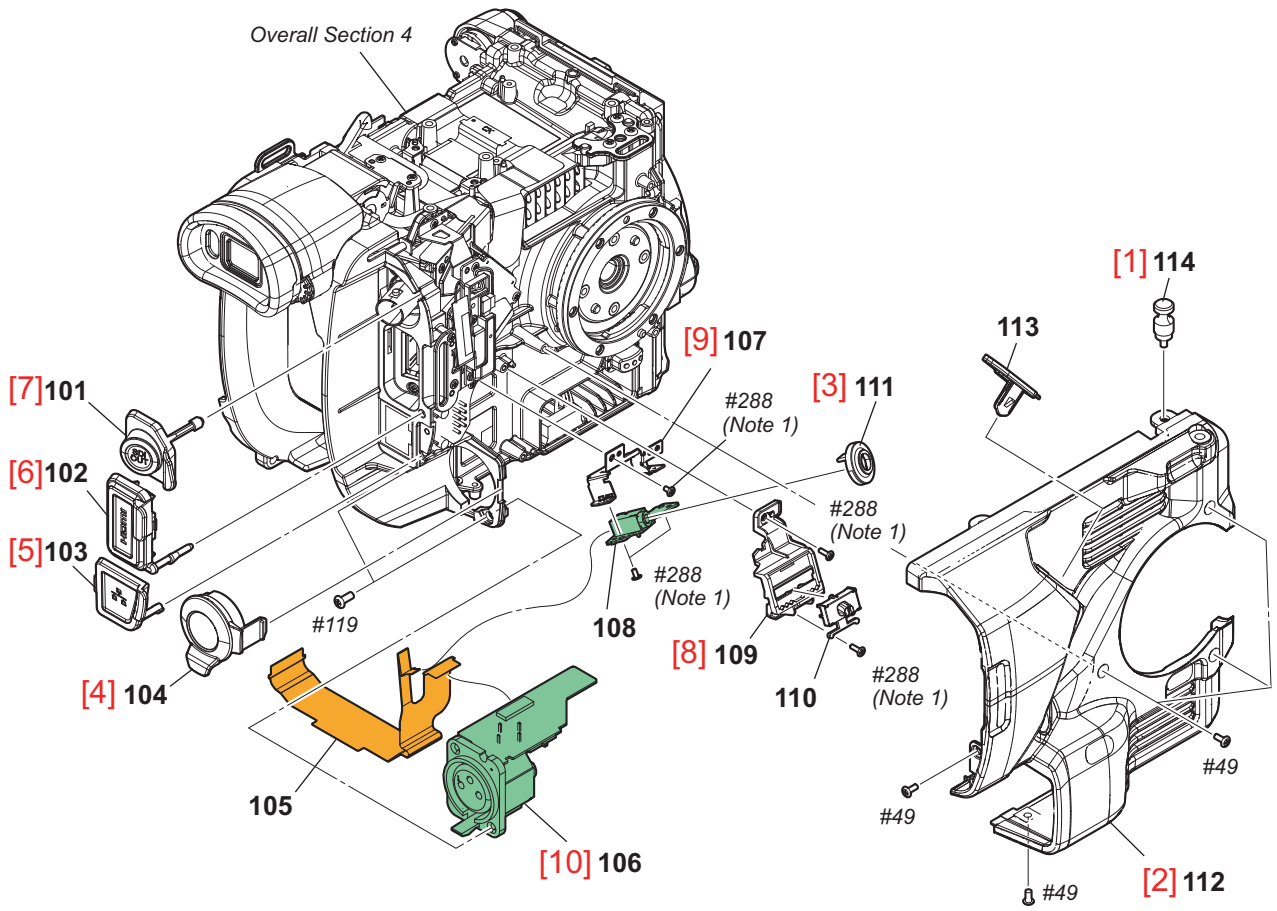
Overall Section 2



Ref. No. or Q'ty	Part No.	SP Description
51	A-2076-332-A	CK-1015 BOARD, COMPLETE
52	1-894-946-11	FP-2332 FLEXIBLE BOARD
53	1-894-947-11	FP-2333 FLEXIBLE BOARD
54	4-576-397-01	PLATE, HANDLE CONNECTOR
55	A-2076-340-A	HN-1017 BOARD, COMPLETE
56	4-446-014-01	TAPE AS (2040)
57	4-579-201-01	SHEET (MF), RADIATION
58	4-576-459-01	HEAT SINK (B), VC
59	4-579-202-01	SHEET (L), VC RADIATION
60	4-579-203-01	SHEET (M), VC RADIATION
61	A-2094-229-A	VC-1039 BOARD, COMPLETE (SERVICE) (PXW-FS5/FS5K)
	A-2224-299-A	FS5M2 VC-1039 BOARD, COMPLETE (SERVICE) (PXW-FS5M2/FS5M2K)
62	4-534-480-01	BM, GASKET
63	4-587-491-01	SHEET (MT), VC RADIATION

Ref. No. or Q'ty	Part No.	SP Description
64	4-576-458-01	HEAT SINK (A), VC
#2	2-635-562-31	SCREW (M1.7)
#288	2-187-345-21	SCREW (M1.7), P2

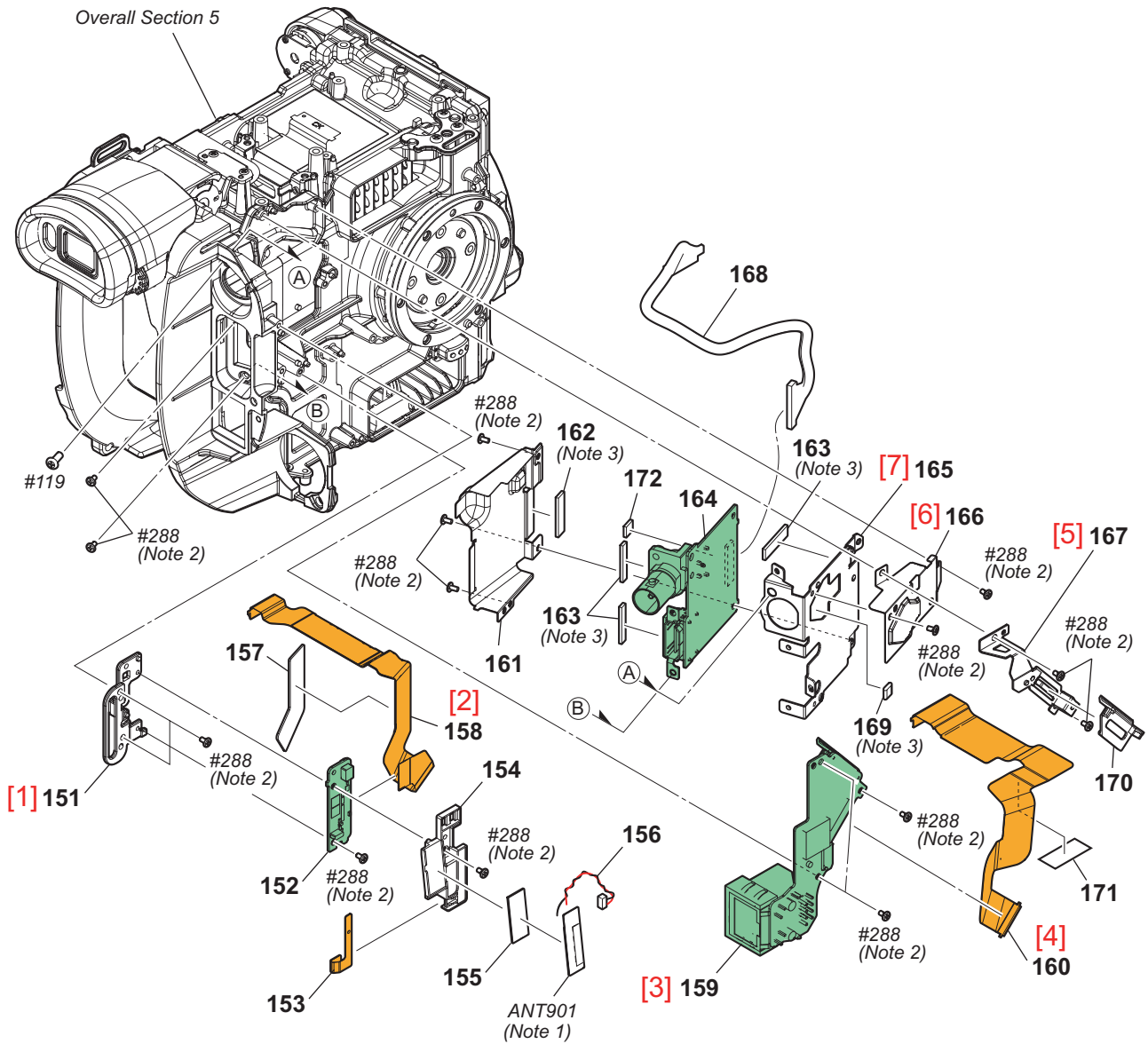
Overall Section 3



Ref. No. or Q'ty	Part No.	SP Description
101	4-576-203-01	COVER (S), TERMINAL
102	4-576-204-01	COVER (H), TERMINAL
103	4-576-205-01	COVER (L), TERMINAL
104	4-576-206-01	COVER (X), TERMINAL
105	1-894-953-11	FP-2339 FLEXIBLE BOARD
106	A-2076-337-A	XL-1006 BOARD, COMPLETE
107	4-576-222-01	PLATE, LANC
108	A-2076-345-A	LC-1032 BOARD, COMPLETE
109	4-576-214-01	BASE, XLR SWITCH
110	4-576-213-01	SWITCH, XLR
111	4-576-217-01	HOLDER (O), LANC
112	4-576-211-01	CABINET, OUT SIDE
113	4-576-216-01	COVER (V), TERMINAL
114	4-269-040-01	HOOK, MEGEYAR
#49	2-630-005-31	SCREW (M2), NEW TRUSTER, P2

Ref. No. or Q'ty	Part No.	SP Description
#119	7-627-556-58	SCREW +P 2.6X5
#288	2-187-345-21	SCREW (M1.7), P2

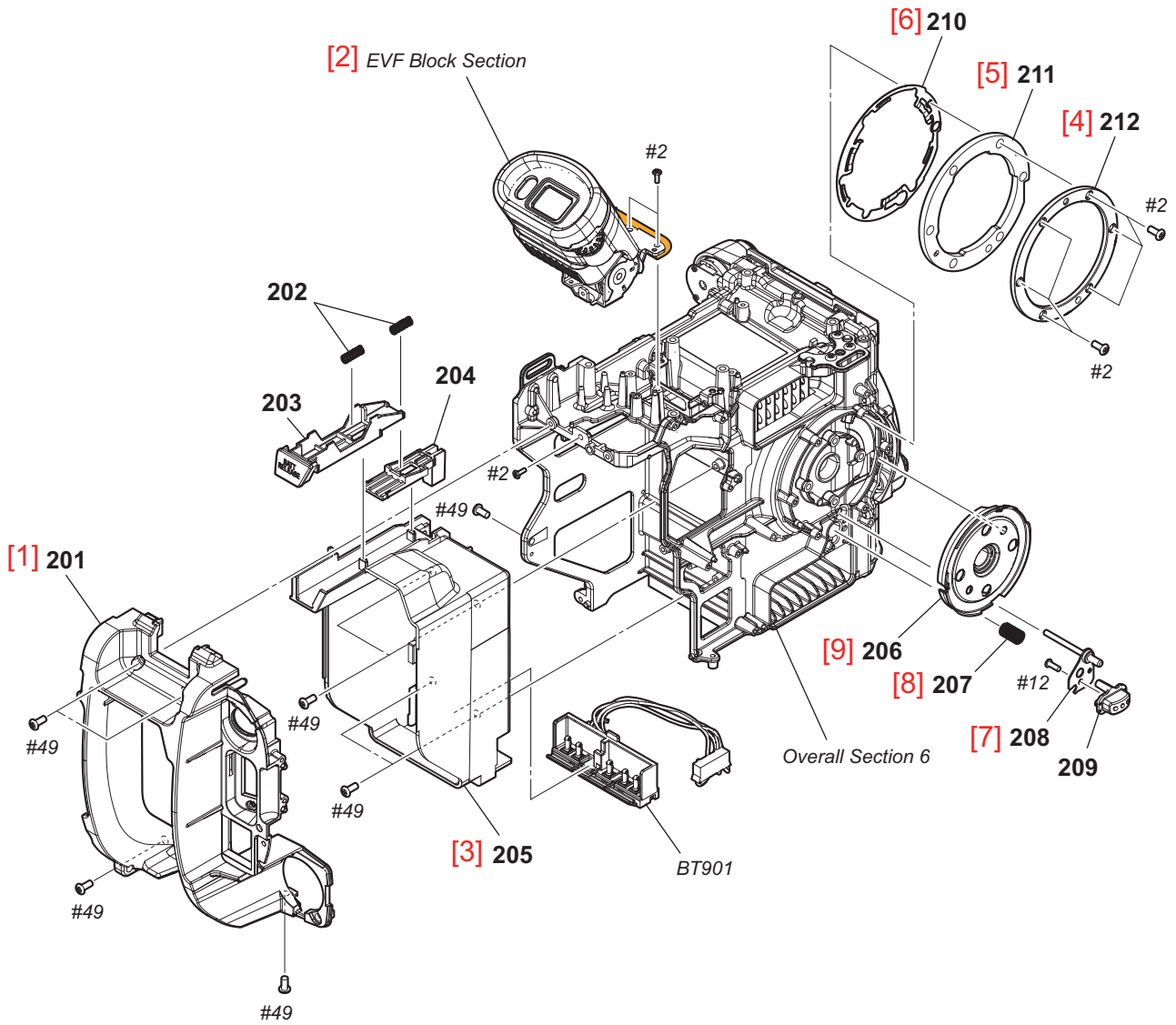
Overall Section 4



Ref. No. or Q'ty	Part No.	SP Description
151	4-576-202-01	CLAMPER BT
152	A-2087-122-A	WF-1004 BOARD, COMPLETE
153	1-889-592-11	AN-1006 FLEXIBLE BOARD
154	4-576-212-01	HOLDER WIFI
155	4-489-010-01	SHEET (ANT), ADHESIVE
156	1-846-787-31	CABLE
157	4-583-915-01	WF SPACER
158	1-894-948-11	FP-2334 FLEXIBLE BOARD
159	A-2076-335-A	VF-1016 BOARD, COMPLETE
160	1-894-949-11	FP-2335 FLEXIBLE BOARD
161	4-576-219-01	PLATE (UPPER), HS
162	4-576-223-01	GASKET (L)
163	4-279-310-11	GASKET, USB BOTTOM
164	A-2076-334-A	HS-1006 BOARD, COMPLETE
165	4-576-218-01	PLATE (LOWER), HS
166	4-576-220-01	CASE, HS SHIELD

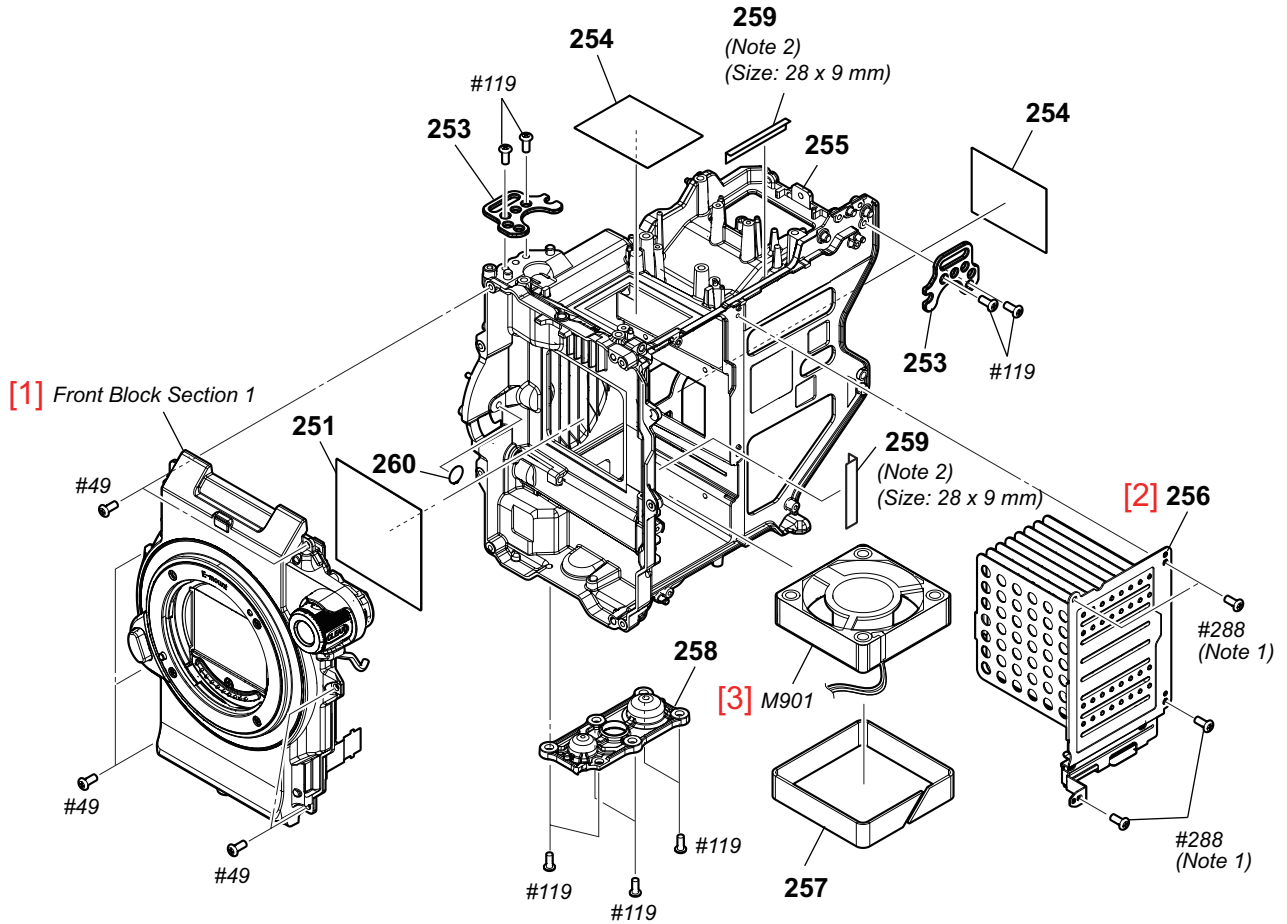
Ref. No. or Q'ty	Part No.	SP Description
167	4-576-221-01	PLATE, VF
168	1-965-937-31	HARNESS (COAXIAL CABLE)
169	4-534-480-01	BM, GASKET
170	4-579-196-01	COVER, VF CONNECTOR
171	4-587-354-01	SPACER, VF FLEXIBLE SHEET (SD), RADIATION SERVICE, NFC INDIVIDUAL
172	4-587-355-01	SPACER, VF FLEXIBLE SHEET (SD), RADIATION SERVICE, NFC INDIVIDUAL
ANT901	A-2079-995-A	SERVICE, NFC INDIVIDUAL
#119	7-627-556-58	SCREW +P 2.6X5
#288	2-187-345-21	SCREW (M1.7), P2

Overall Section 5



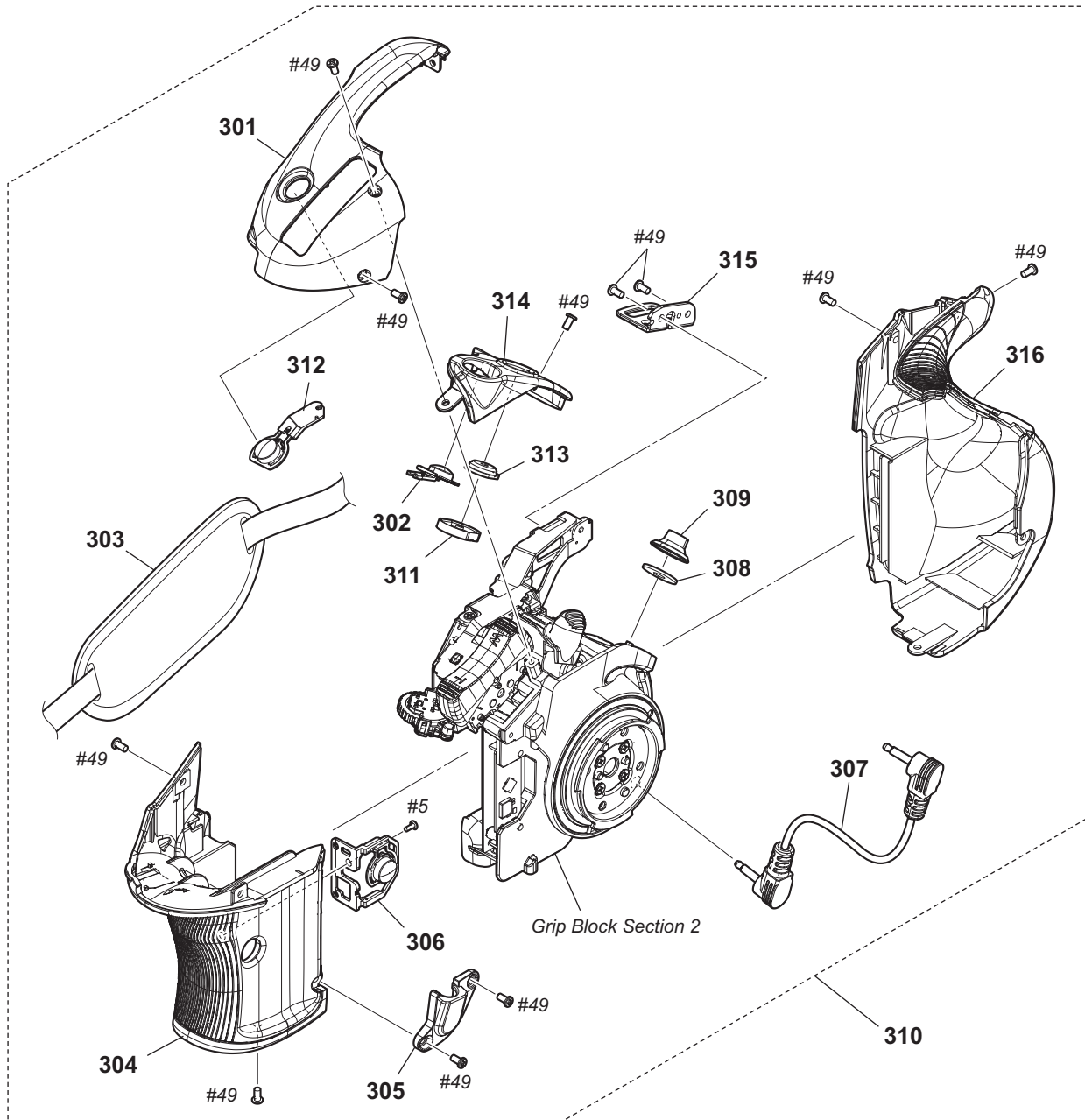
Ref. No. or Q'ty	Part No.	SP Description
201	4-576-198-01	CABINET REAR
202	4-165-273-01	SPRING, BT RELEASE
203	4-576-200-01	BT RELEASE BUTTON
204	4-576-201-01	LOCK, BT RELEASE
205	4-576-199-01	PANEL, BT
206	4-576-460-01	COVER, GRIP BASE
207	4-546-545-01	IM LENS LOCK SPRING
208	X-2591-961-1	PIN ASSY, GP MOUNT LOCK
209	4-576-423-01	BUTTON, GRIP RELEASE
210	4-576-421-01	SPRING, GRIP MOUNT
211	4-576-422-01	RETAINER, GRIP
212	4-576-420-02	RING, GRIP MOUNT
BT901	△ 1-780-986-11	TERMINAL BOARD, BATTERY
#2	2-635-562-31	SCREW (M1.7)
#12	3-080-204-21	SCREW, TAPPING, P2
#49	2-630-005-31	SCREW (M2), NEW TRUSTER, P2

Overall Section 6



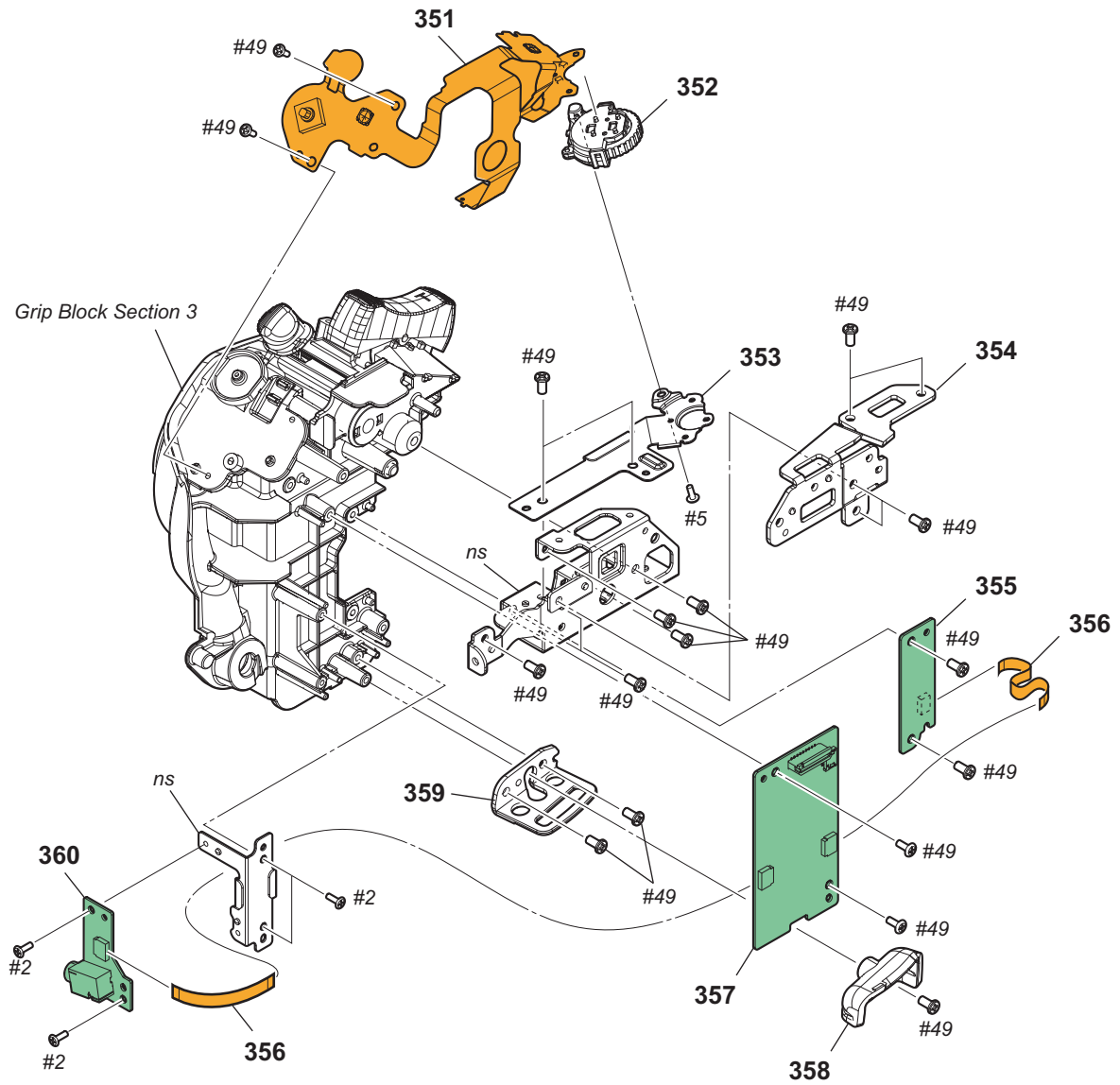
Ref. No. or Q'ty	Part No.	SP Description
251	4-579-207-01	SHEET (MF), L
253	4-576-415-01	BRACKET (IN), BELT
254	4-579-208-01	SHEET (MF), S
255	4-576-412-01	FRAME, MAIN
256	X-2591-960-1	FIN ASSY, VC RADIATION
257	4-576-416-01	HOLDER, FAN
258	4-576-418-11	SCREW, TRIPOD
259	4-446-014-01	TAPE AS (2040)
260	4-546-540-01	IM MOUNT TAPE
M901	△ 1-855-369-11	DC FAN
#49	2-630-005-31	SCREW (M2), NEW TRUSTER, P2
#119	7-627-556-58	SCREW +P 2.6X5
#288	2-187-345-21	SCREW (M1.7), P2

Grip Block Section 1



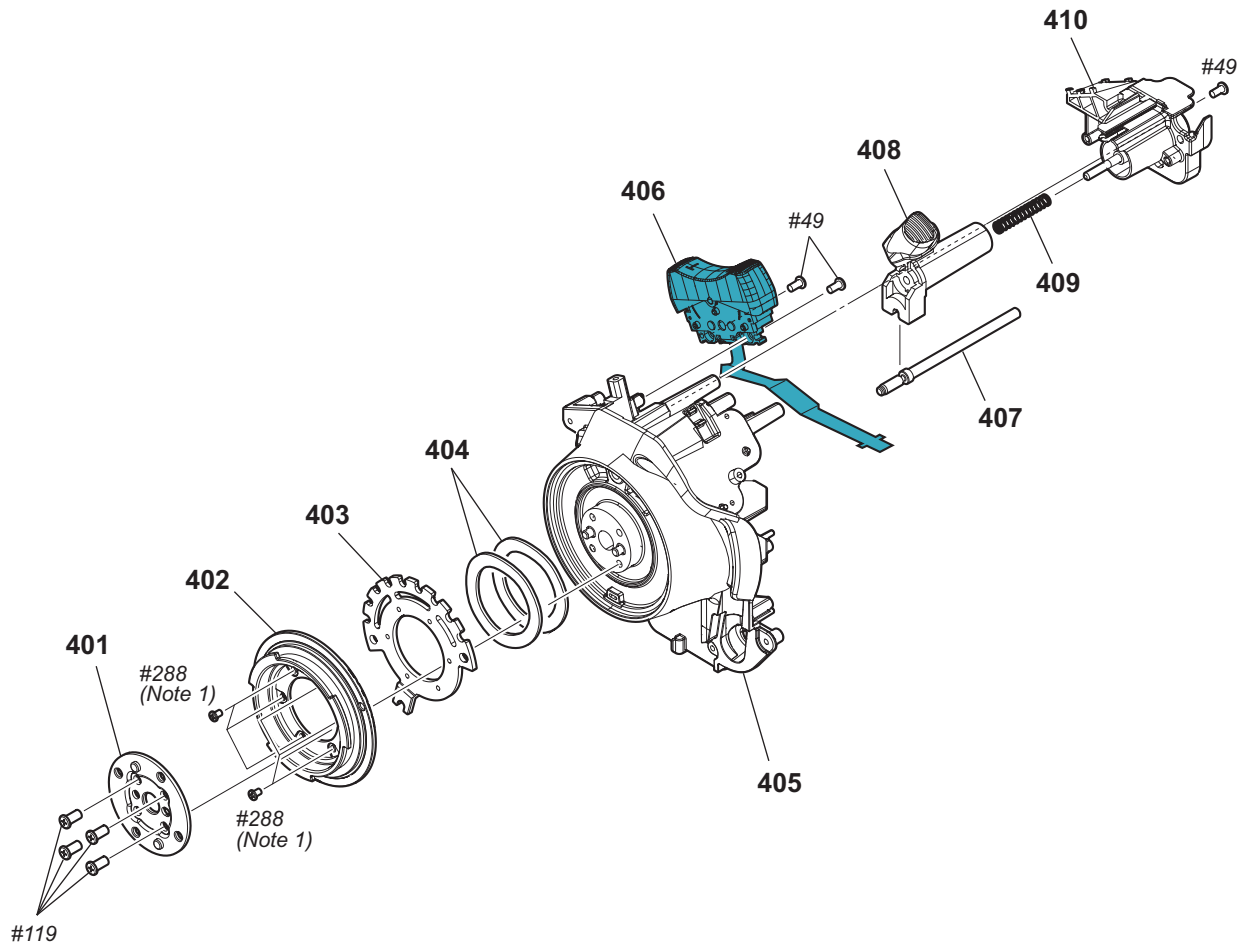
Ref. No. or Q'ty	Part No.	SP Description	Ref. No. or Q'ty	Part No.	SP Description
301	4-576-349-01	TOP COVER, GRIP	#5	3-080-204-01	SCREW, TAPPING, P2
302	4-576-358-01	BUTTON, ASSIGN 5	#49	2-630-005-31	SCREW (M2), NEW TRUSTER, P2
303	4-541-719-11	BELT (913), GRIP			
304	X-2591-958-1	COVER ASSY (FRONT), GRIP			
305	4-576-513-01	COVER (G), LANC			
306	4-576-359-01	BUTTON, ASSIGN 6			
307	1-849-162-11	CONNECTION CABLE (LANC)			
308	4-541-676-01	SHEET (G), MUFFLE			
309	4-544-480-01	JOYSTICK			
310	A-2081-877-A	G BLOCK ASSY			
311	4-269-121-01	RUBBER, SS BUTTON			
312	4-576-357-01	BUTTON, ASSIGN 4			
313	4-576-356-01	BUTTON (GRIP), REC			
314	4-576-351-01	COVER, GRIP BUTTON			
315	4-576-370-01	BRACKET (LOWER), GRIP BELT			
316	X-2591-957-1	COVER ASSY (REAR), GRIP			

Grip Block Section 2



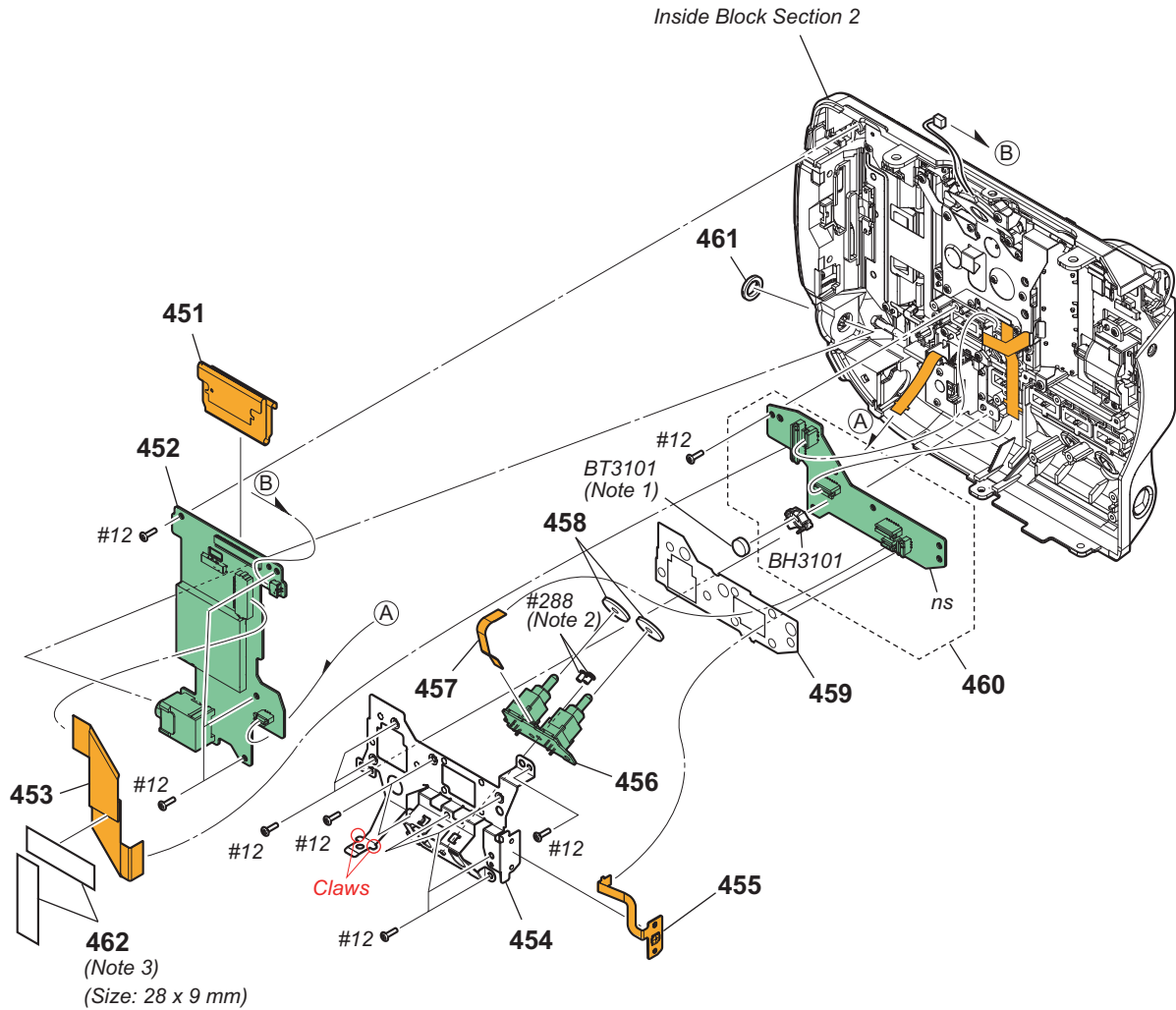
Ref. No. or Q'ty	Part No.	SP Description
351	A-2076-368-A	FP-2328 FLEXIBLE BOARD, COMPLETE
352	X-2590-703-3	DIAL ASSY (786), CONT
353	4-576-365-01	RETAINER, SS
354	4-576-369-01	BRACKET (UPPER), GRIP BELT
355	A-2076-349-A	SW-1022 BOARD, COMPLETE
356	1-836-006-11	FLEXIBLE FLAT CABLE (FFC-172)
357	A-2076-343-A	CT-1001 BOARD, COMPLETE
358	4-576-350-01	COVER (BOTTOM), GRIP
359	4-576-370-01	BRACKET (LOWER), GRIP BELT
360	A-2087-121-A	CN-1044 BOARD, COMPLETE
#2	2-635-562-31	SCREW (M1.7)
#5	3-080-204-01	SCREW, TAPPING, P2
#49	2-630-005-31	SCREW (M2), NEW TRUSTER, P2

Grip Block Section 3



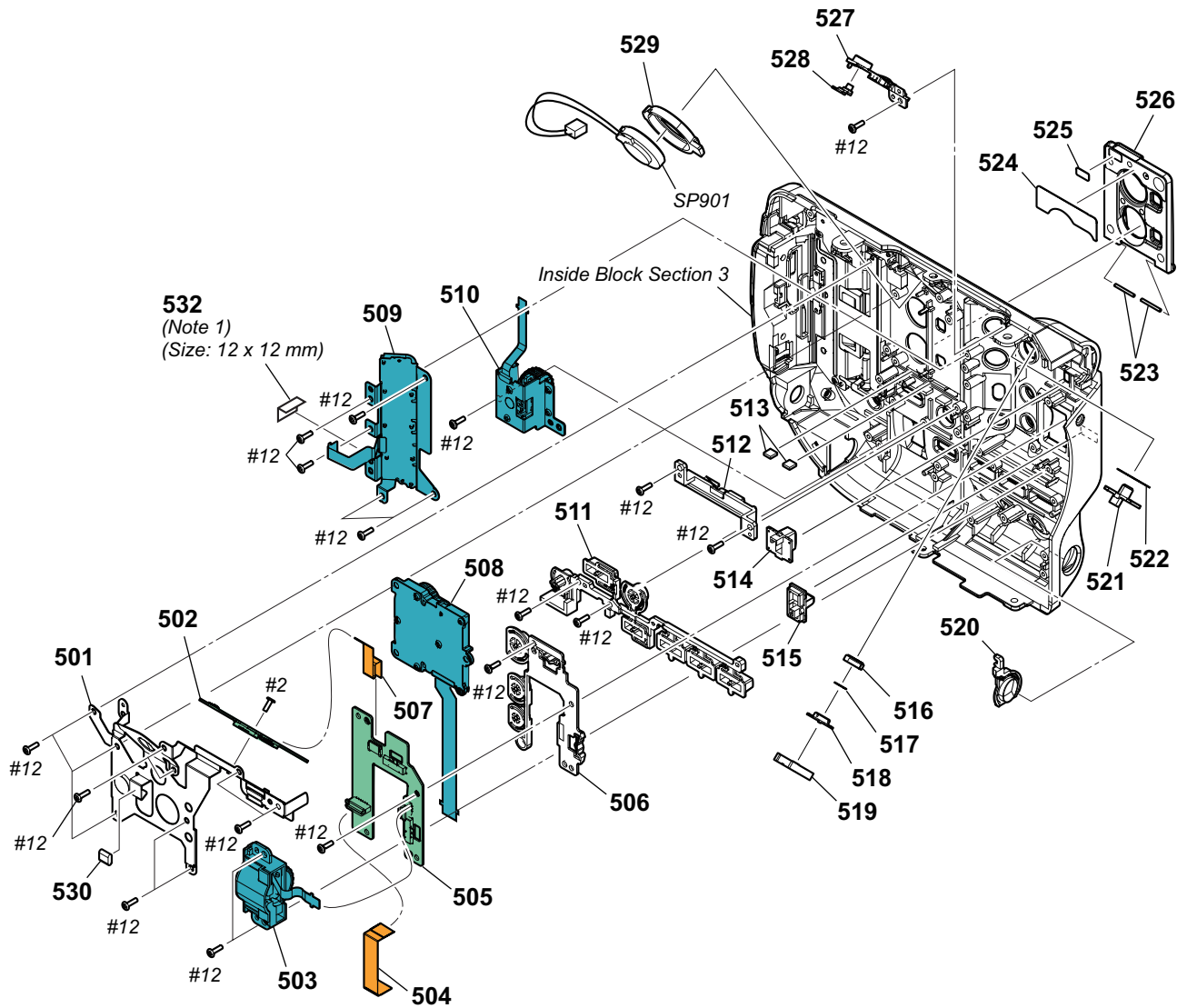
Ref. No. or Q'ty	Part No.	SP Description
401	4-576-362-01	RETAINER, DISK
402	4-576-363-01	MOUNT, GRIP
403	4-576-361-01	DISK, ROTARY
404	7-623-711-07	WASHER 20, WAVE
405	4-576-340-01	CHASSIS, GRIP
406	1-490-411-11	SWITCH BLOCK, CONTROL (PZ96000)
407	4-576-360-01	PIN, ROTARY LOCK
408	4-576-354-01	LEVER, ROTARY LOCK
409	4-478-009-01	SPRING, PAD LOCK
410	4-576-353-01	CASE, LOCK PIN
#49	2-630-005-31	SCREW (M2), NEW TRUSTER, P2
#119	7-627-556-58	SCREW +P 2.6X5
#288	2-187-345-21	SCREW (M1.7), P2

Inside Block Section 1



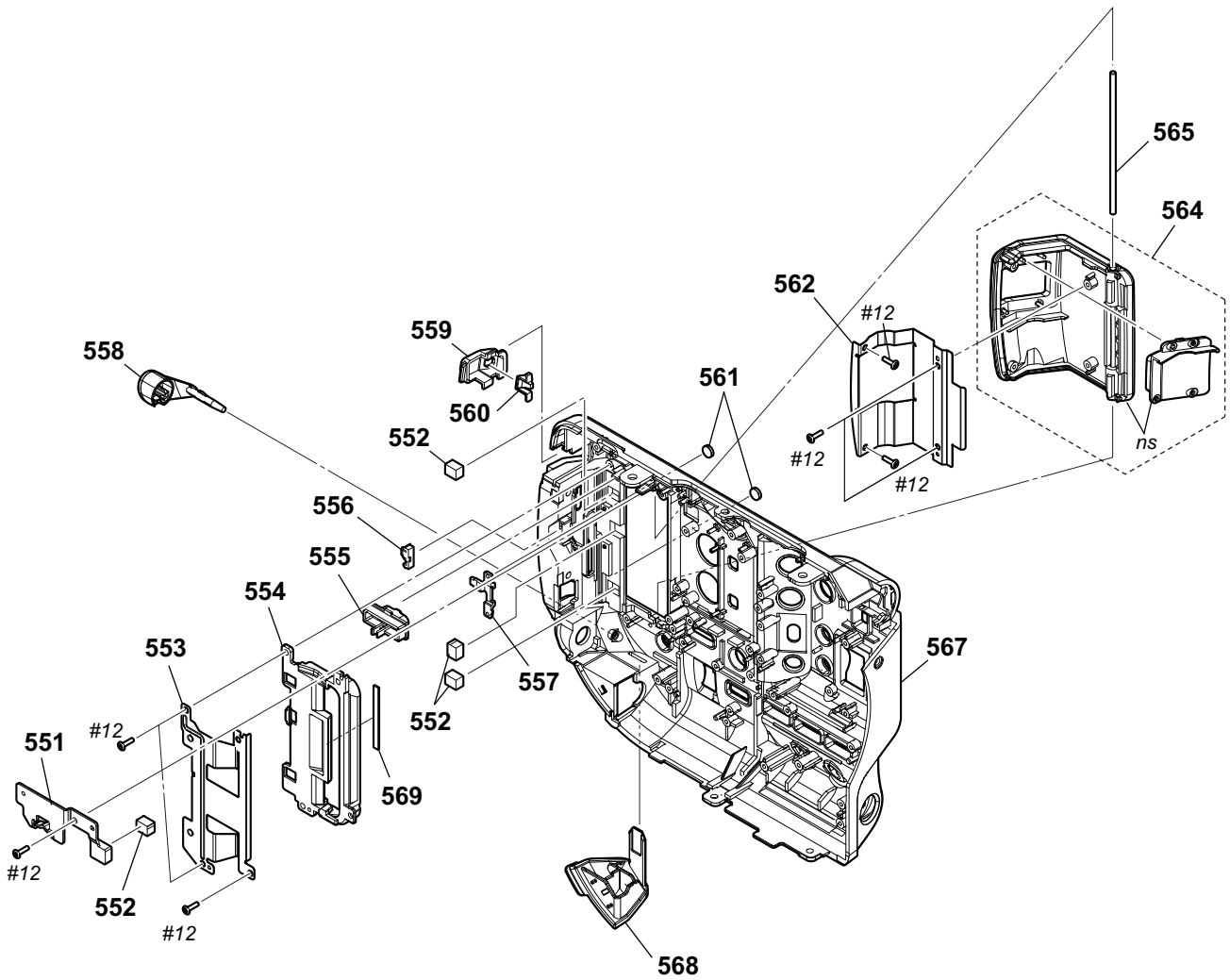
Ref. No. or Q'ty	Part No.	SP Description
451	1-894-951-11	FP-2337 FLEXIBLE BOARD
452	A-2076-341-A	SD-1006 BOARD, COMPLETE
453	1-849-143-11	FLEXIBLE FLAT CABLE (FFC-1074)
454	4-576-334-01	BRACKET, TG
455	A-2076-369-A	FP-2330 FLEXIBLE BOARD, COMPLETE
456	A-2076-346-A	TG-1004 BOARD, COMPLETE
457	1-836-006-11	FLEXIBLE FLAT CABLE (FFC-172)
458	4-547-022-11	CUSHION (SW), WATERPROOF
459	4-584-012-01	SHEET (KY), INSULATING
460	A-2076-344-A	KY-1012 BOARD, COMPLETE
461	3-061-234-01	NUT (M6X0.5)
462	4-446-014-01	TAPE AS (2040)
BH3101	△ 1-251-928-21	SOCKET, BATTERY
BT3101	△ 1-756-135-32	BATTERY LITHIUM SECONDARY
#12	3-080-204-21	SCREW, TAPPING, P2
#288	2-187-345-21	SCREW (M1.7), P2

Inside Block Section 2



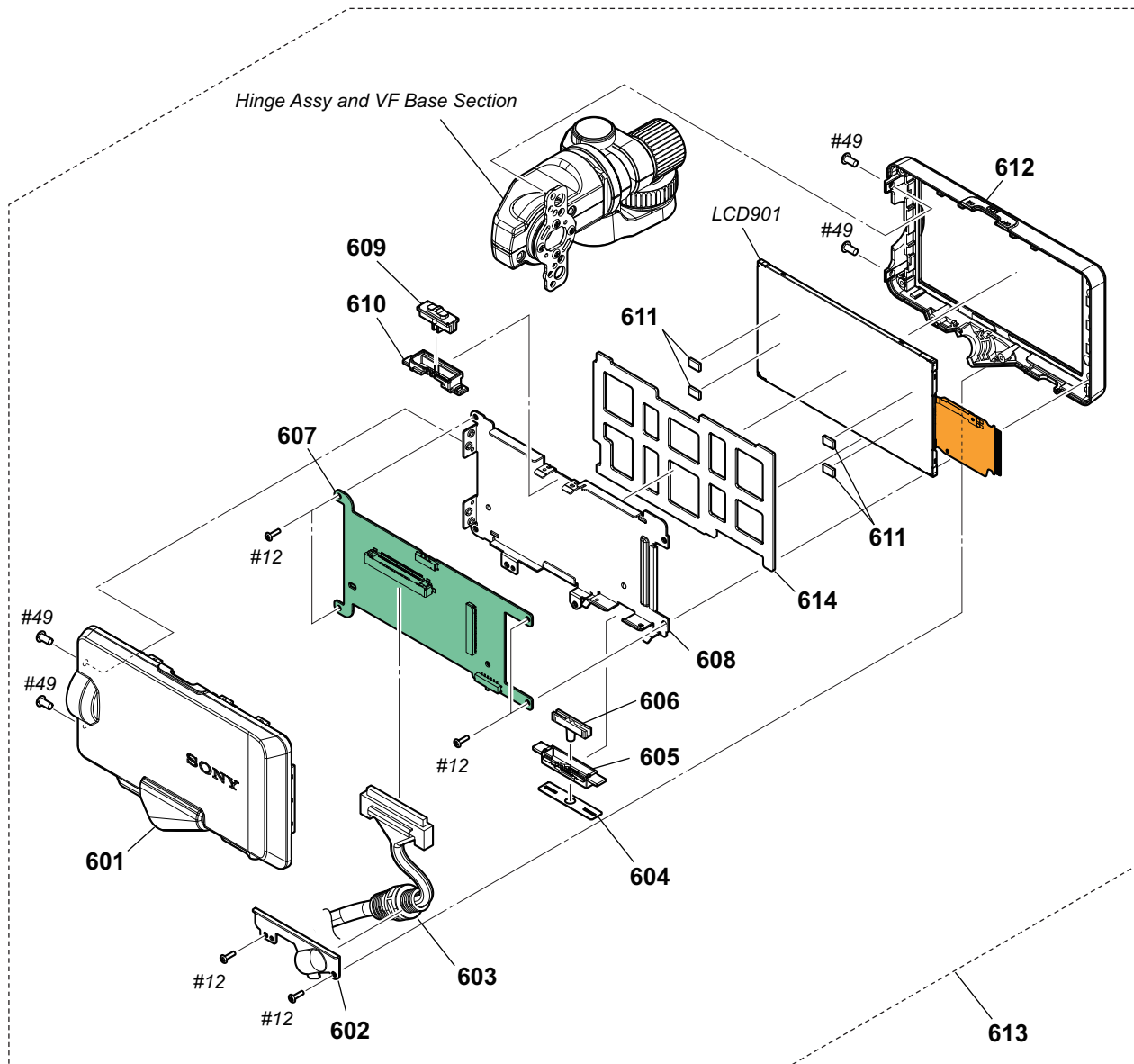
Ref. No. or Q'ty	Part No.	SP Description	Ref. No. or Q'ty	Part No.	SP Description
501	4-576-331-01	BRACKET, XS	520	4-576-316-01	BUTTON, WB
502	A-2076-348-A	XS-1001 BOARD, COMPLETE	521	4-576-310-01	SWITCH, HOLD
503	1-492-897-11	SWITCH BLOCK CONTROL (ID94100)	522	4-579-198-01	SHEET, HOLD
504	1-839-086-11	CABLE, FLEXIBLE FLAT (FFC-256)	523	4-165-324-01	SHAFT, AL
505	A-2076-347-A	NI-1001 BOARD, COMPLETE	524	4-579-199-01	SHEET, AU MAGNET
506	4-576-314-01	BUTTON, ASSIGN	525	4-576-332-01	PLATE, MAGNET
507	1-838-558-11	CABLE, FLEXIBLE FLAT (FFC-254)	526	4-576-327-01	LID, AU
508	1-493-063-11	SWITCH BLOCK, CONTROL (AU96400)	527	4-576-311-01	BUTTON, FULL AUTO
509	1-493-064-11	SWITCH BLOCK, CONTROL (ICS96400)	528	4-576-324-01	LIGHT, FULL AUTO GUIDE
510	1-492-342-21	SWITCH BLOCK, CONTROL (KP50080)	529	2-178-550-01	HOLDER, SPEAKER
511	4-576-317-01	BUTTON, MENU	530	4-534-480-01	BM, GASKET
512	4-576-328-01	BASE, AU	532	4-446-014-01	TAPE AS (2040)
513	4-547-150-01	SHEET (941), RUBBER	SP901	1-858-706-21	LOUDSPEAKER (1.8CM)
514	4-576-312-01	KNOB, PRESET	#2	2-635-562-31	SCREW (M1.7)
515	4-576-313-01	KNOB, ND	#12	3-080-204-21	SCREW, TAPPING, P2
516	4-576-335-01	BUTTON, REC			
517	4-576-339-01	SHEET, REC BUTTON ADHESIVE			
518	4-576-309-01	BASE, REC BUTTON			
519	4-269-121-01	RUBBER, SS BUTTON			

Inside Block Section 3



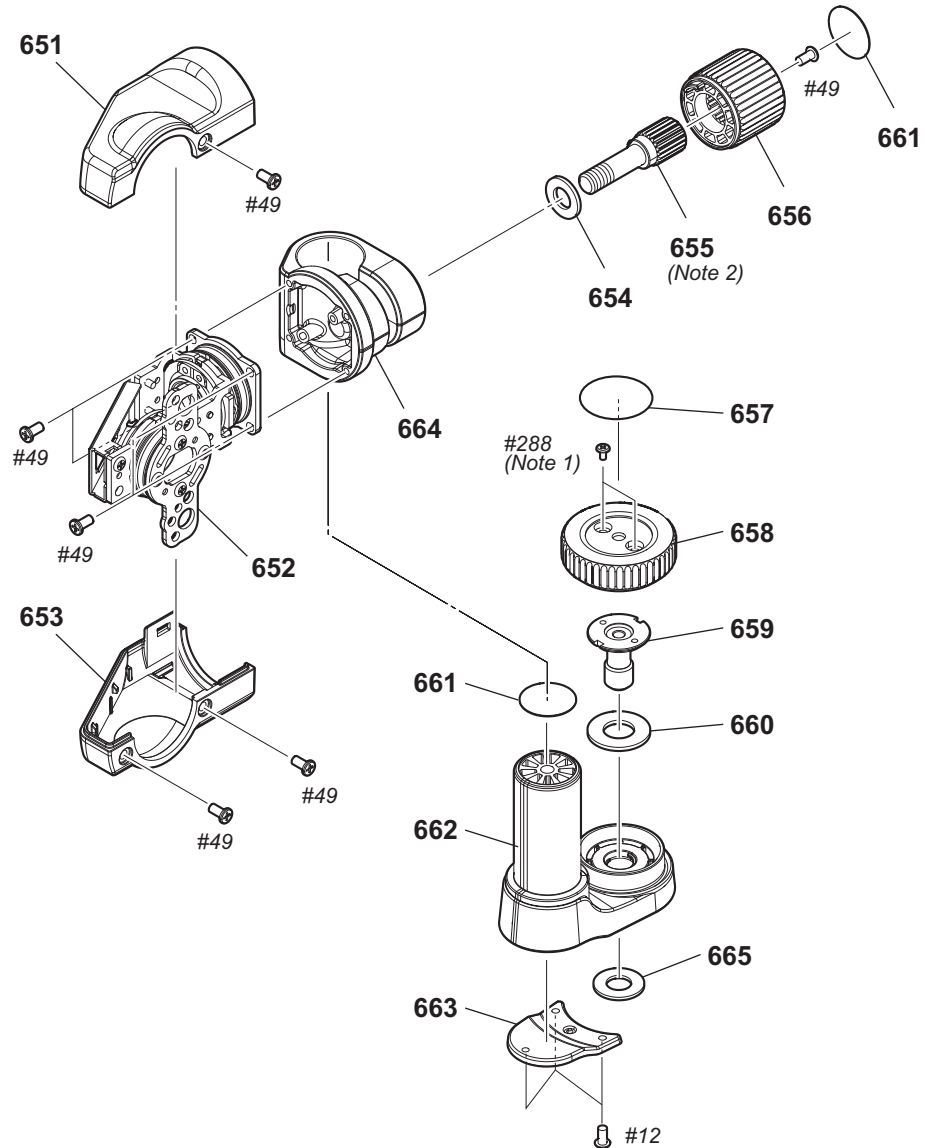
Ref. No. or Q'ty	Part No.	SP Description
551	4-576-511-01	GUIDE, POWER SWITCH
552	1-471-573-11	MAGNET
553	4-576-330-01	SPRING, MEDIA LID CLICK
554	4-576-308-01	RETAINER, MEDIA LID
555	4-576-318-01	SWITCH, POWER
556	4-576-323-01	LIGHT, VC GUIDE
557	4-576-322-01	LIGHT, SD GUIDE
558	4-576-319-01	LID, HP
559	4-576-325-01	WINDOW, IR
560	4-576-321-01	LIGHT, TALLY GUIDE
561	4-579-200-01	CUSHION, MD
562	4-577-102-01	PLATE (MD), MAGNET
564	A-2179-168-A	SERVICE, MD LID ASSY (PXW-FS5/ FS5K)
	A-2224-298-A	SERVICE, MD LID ASSY (PXW-FS5M2/ FS5M2K)
565	4-576-338-01	SHAFT, LID HINGE
567	4-576-306-01	CABINET, IN SIDE
568	4-576-320-01	LID, DC
569	4-587-356-01	CUSHION, MEDIA LID RETAINER
#12	3-080-204-21	SCREW, TAPPING, P2

LCD Block Section



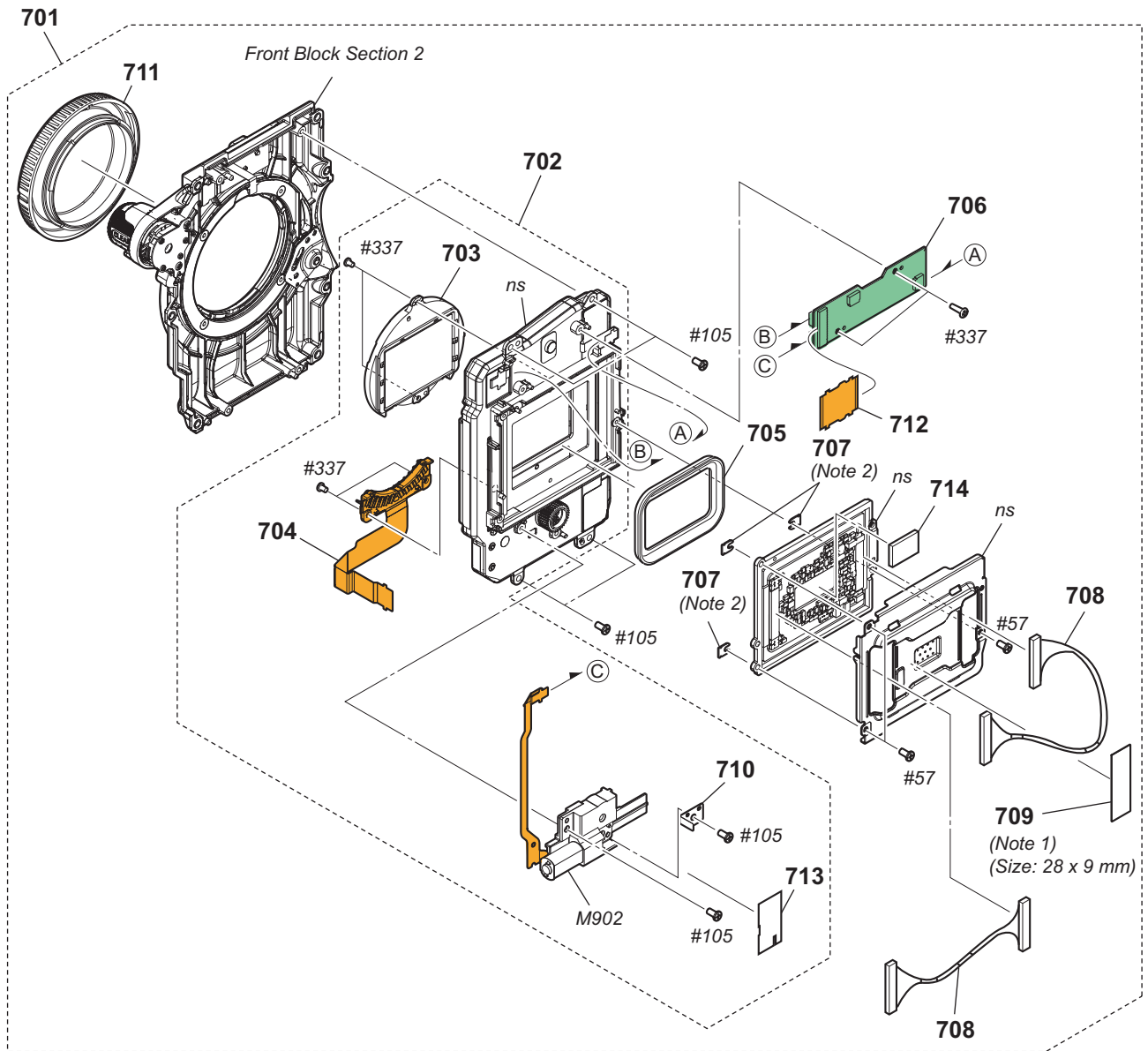
Ref. No. or Q'ty	Part No.	SP Description	Ref. No. or Q'ty	Part No.	SP Description
601	4-576-373-01	CABINET (C), P	#49	2-630-005-31	SCREW (M2), NEW TRUSTER, P2
602	4-577-103-01	BRACKET, VF CABLE			
603	1-848-672-13	CABLE, CONNECTION			
604	4-579-432-01	SHEET, SELECTION (SW)			
605	4-576-382-01	BASE, SELECTION (SW)			
606	4-576-381-01	SELECTION (SW)			
607	A-2087-120-A	PD-1046 BOARD, COMPLETE			
608	4-576-371-01	FRAME, PD			
609	4-583-117-01	LCD SW KNOB			
610	4-583-118-01	LCD SW BASE			
611	4-535-706-01	ESD GASKET			
612	4-576-372-01	CABINET (M), P			
613	A-2094-228-A	LCD BLOCK ASSY (SERVICE)			
614	4-583-883-02	CUSHION (964), LCD			
LCD901	A-2066-639-A	SERVICE, LCD BLOCK ASSY			
#12	3-080-204-21	SCREW, TAPPING, P2			

Hinge Assy and VF Base Section



Ref. No. or Q'ty	Part No.	SP Description	Ref. No. or Q'ty	Part No.	SP Description
651	4-576-375-01	COVER (O), HINGE	664	4-576-377-01	HOLDER, CLAMP
652	X-2591-959-1	HINGE (964) ASSY	665	4-587-495-01	POLY-SLIDER (964)
653	4-576-374-01	COVER (U), HINGE	#12	3-080-204-21	SCREW, TAPPING, P2
654	7-688-005-11 *	W 5, MIDDLE	#49	2-630-005-31	SCREW (M2), NEW TRUSTER, P2
655	4-576-380-01	SHAFT, HANDLE CLAMP	#288	2-187-345-21	SCREW (M1.7), P2
656	4-576-379-01	KNOB, HANDLE CLAMP			
657	4-587-493-01	SHEET (964), HANDLE SHAFT			
658	4-583-369-01	KNOB, VF FIXED			
659	4-576-378-01	SCREW, VF BASE FIXED			
660	7-688-006-11 *	W 6, MIDDLE			
661	4-583-371-01	SHEET, VF BASE			
662	4-576-376-01	BASE, VF			
663	4-583-370-01	COVER, VF BASE			

Front Block Section 1



Ref. No. or Q'ty	Part No.	SP Description	Ref. No. or Q'ty	Part No.	SP Description
701	A-2090-932-A	SERVICE, FRONT BLOCK ASSY	M902	A-2090-585-A	BLOCK ASSY, ND MOTOR UNIT
702	A-2070-920-A	FIX-2000	#57	7-627-852-18	SCREW, PRECISION +P 1.7X4 TYPE3
703	1-856-728-21	OPTICALFILTERBLOCK (OFB-01-129)	#105	2-891-494-31	SCREW (M2), NEW TRUSTER, P2
704	X-2591-836-1	E-BL ASSY 2000	#337	4-577-672-01	SCREW (M1.7)
705	4-583-112-01	IM SEAL RUBBER 2000			
706	A-2076-333-A	GY-1009 BOARD, COMPLETE			
707	Selection	SHIM			
	Parts				
708	1-968-297-11	HARNESS (COAXIAL CABLE)			
709	4-446-014-01	TAPE AS (2040)			
710	4-574-970-01	PLATE, ND GEAR (C) RETAINER			
711	4-188-536-01	CAP, BODY			
712	1-894-945-11	FP-2331 FLEXIBLE BOARD			
713	4-582-338-02	GEAR BOX TAPE			
714	4-579-206-01	SHEET (IM), RADIATION			

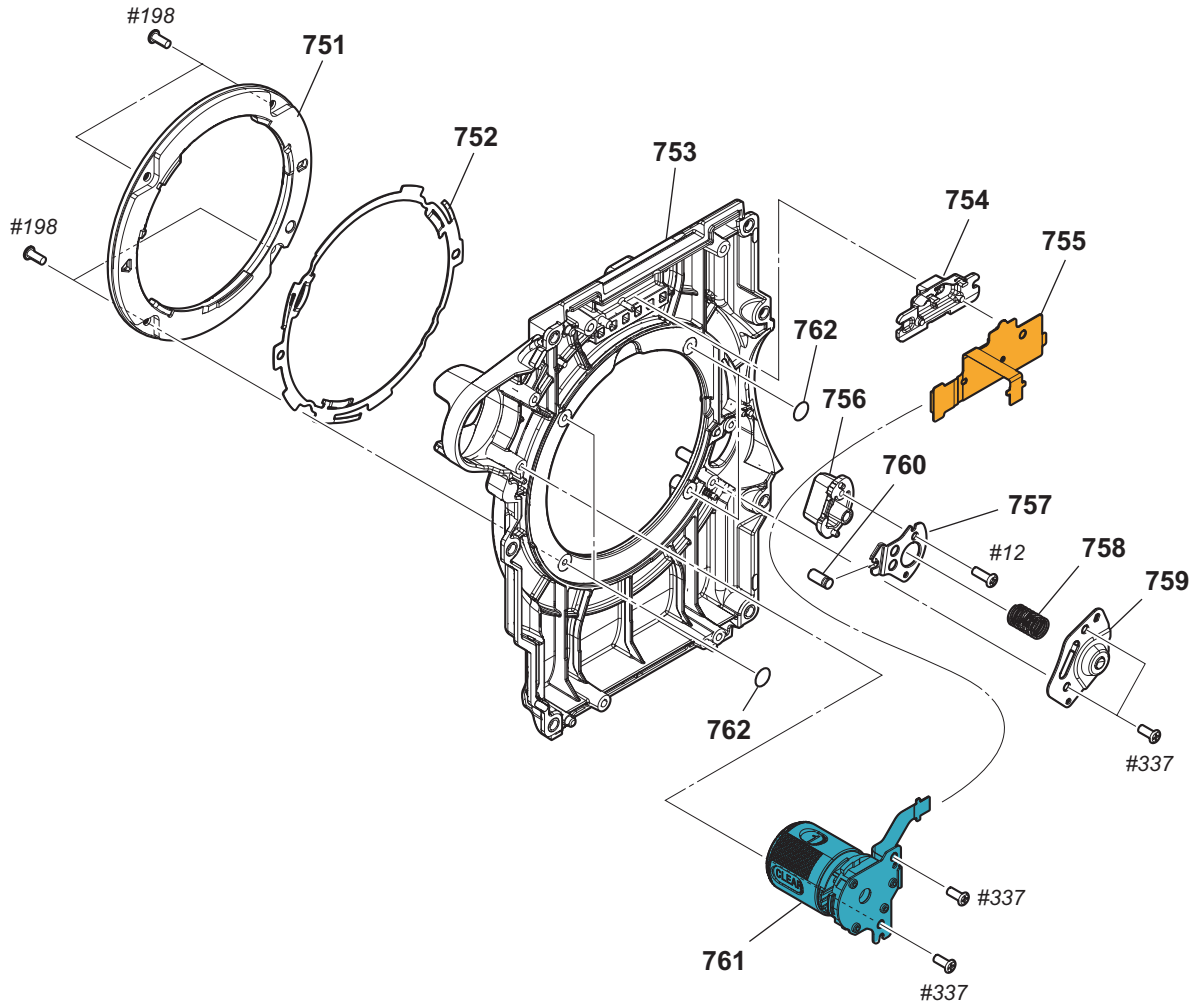
Selection Parts

Ref. No.707

These parts are provided for shift and tilt adjustment. Change the thickness (t) according to result of adjustment.

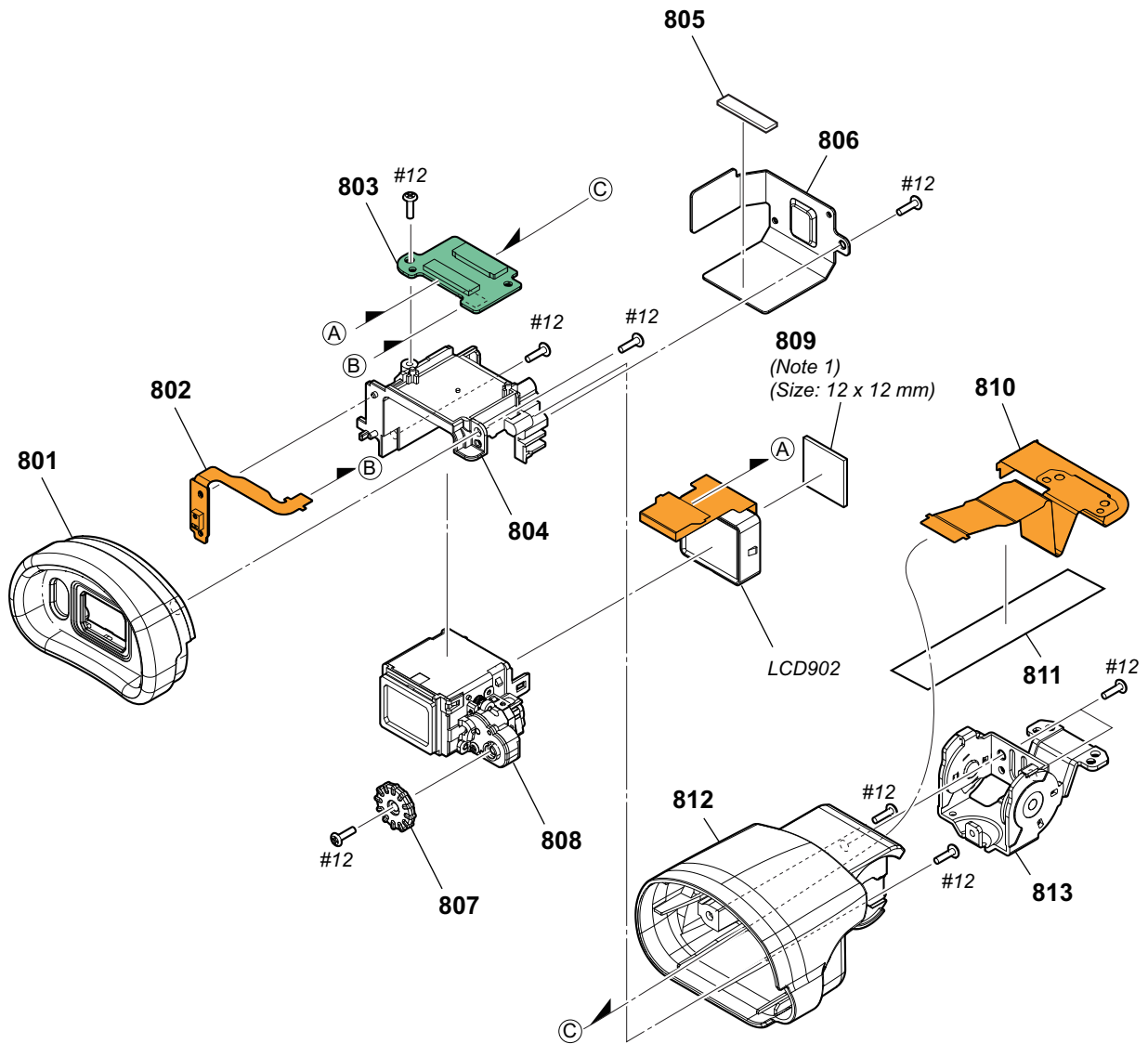
Ref. No. or Q'ty	Part No.	SP Description
	4-443-059-01	SHIM (t=0.12)
	4-443-059-11	SHIM (t=0.14)
	4-443-059-21	SHIM (t=0.16)
	4-443-059-31	SHIM (t=0.18)
	4-443-059-41	SHIM (t=0.20)
	4-443-059-51	SHIM (t=0.22)
	4-443-059-61	SHIM (t=0.24)
	4-443-059-71	SHIM (t=0.26)
	4-443-059-81	SHIM (t=0.28)
	4-443-059-91	SHIM (t=0.30)
	4-443-060-01	SHIM (t=0.32)
	4-443-060-11	SHIM (t=0.34)
	4-443-060-21	SHIM (t=0.36)
	4-443-060-31	SHIM (t=0.38)
	4-443-060-41	SHIM (t=0.40)
	4-443-060-51	SHIM (t=0.42)
	4-443-060-61	SHIM (t=0.44)
	4-443-060-71	SHIM (t=0.46)
	4-443-060-81	SHIM (t=0.48)
	4-443-060-91	SHIM (t=0.50)
	4-443-061-01	SHIM (t=0.52)
	4-443-061-11	SHIM (t=0.54)
	4-443-061-21	SHIM (t=0.56)
	4-443-061-31	SHIM (t=0.58)
	4-443-061-41	SHIM (t=0.60)

Front Block Section 2



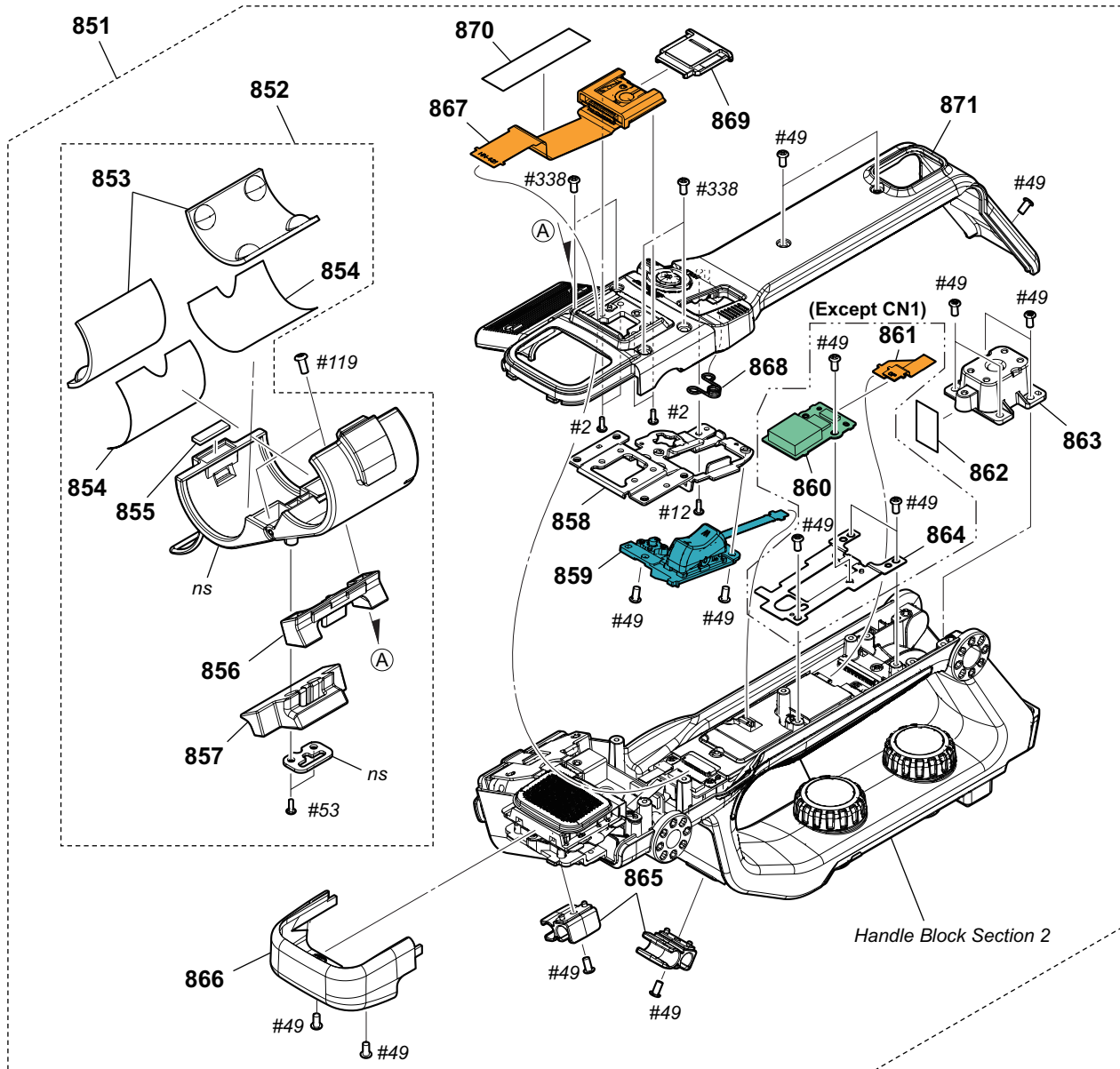
Ref. No. or Q'ty	Part No.	SP Description	Ref. No. or Q'ty	Part No.	SP Description
751	4-546-544-01	IM N PLATE A (1000)	#198	4-186-545-01	SCREW, 0+Z M1.7 SG (SPIN)
752	4-185-963-01 *	MB N PLATE SP	#337	4-577-672-01	SCREW (M1.7)
753	4-576-193-01	CHASSIS FRONT			
754	4-576-197-01	TALLY FRONT			
755	A-2076-367-A	FP-2325 FLEXIBLE BOARD, COMPLETE			
756	4-576-195-01	BUTTON LENS LOCK			
757	4-576-194-01	PLATE, LENS LOCK			
758	4-546-545-01	IM LENS LOCK SPRING			
759	X-2591-962-1	GUIDE (964) ASSY, LOCK BUTTON			
760	4-546-543-01	IM LENS LOCK PIN			
761	A-2090-933-A	SERVICE, ND DIAL BLOCK ASSY (PXW-FS5/FS5K)			
	A-2224-297-A	SERVICE, ND DIAL BLOCK ASSY (PXW-FS5M2/FS5M2K)			
762	4-546-540-01	IM MOUNT TAPE			
#12	3-080-204-21	SCREW, TAPPING, P2			

EVF Block Section



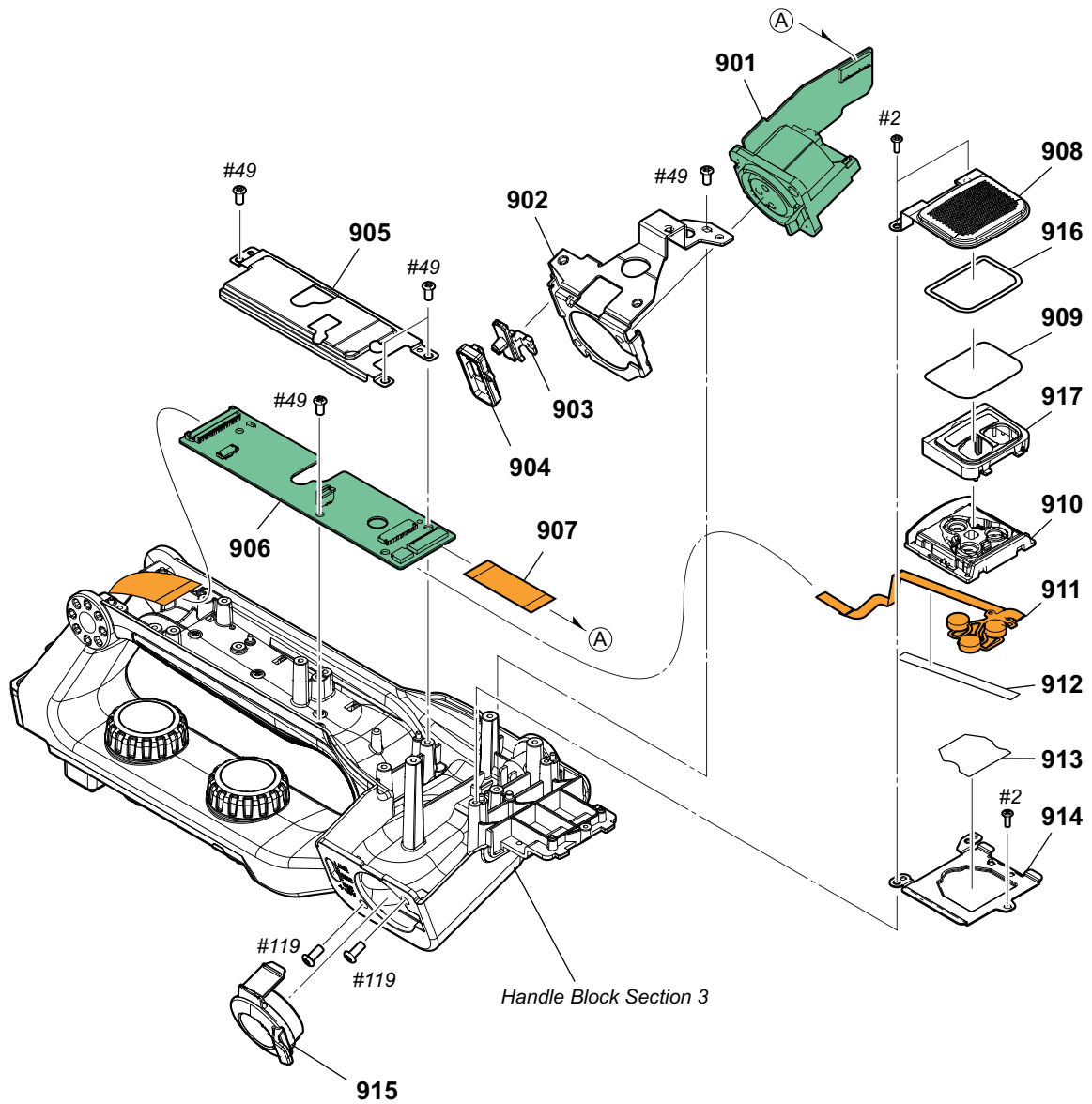
Ref. No. or Q'ty	Part No.	SP Description
801	4-533-013-01	EYE CUP
802	A-2076-370-A	FP-2347 FLEXIBLE BOARD, COMPLETE
803	A-2076-336-A	EV-1014 BOARD, COMPLETE
804	4-576-207-01	HOLDER, VF
805	4-578-351-01	CUSHION, HANDLE CONNECTOR
806	4-576-209-01	HEAT SINK, VF
807	4-533-011-01	DIAL, DIOPTER
808	X-2588-236-1	VF UNIT ASSY
809	4-533-041-01	SHEET (L), VC RADIATION
810	1-894-950-11	FP-2336 FLEXIBLE BOARD
811	4-576-210-01	TAPE (VF)
812	4-576-208-01	CABINET, VF
813	X-2549-590-1	HINGE ASSY, VF
LCD902	A-2047-084-A	ECX333AA-1 SERVICE
#12	3-080-204-21	SCREW, TAPPING, P2

Handle Block Section 1



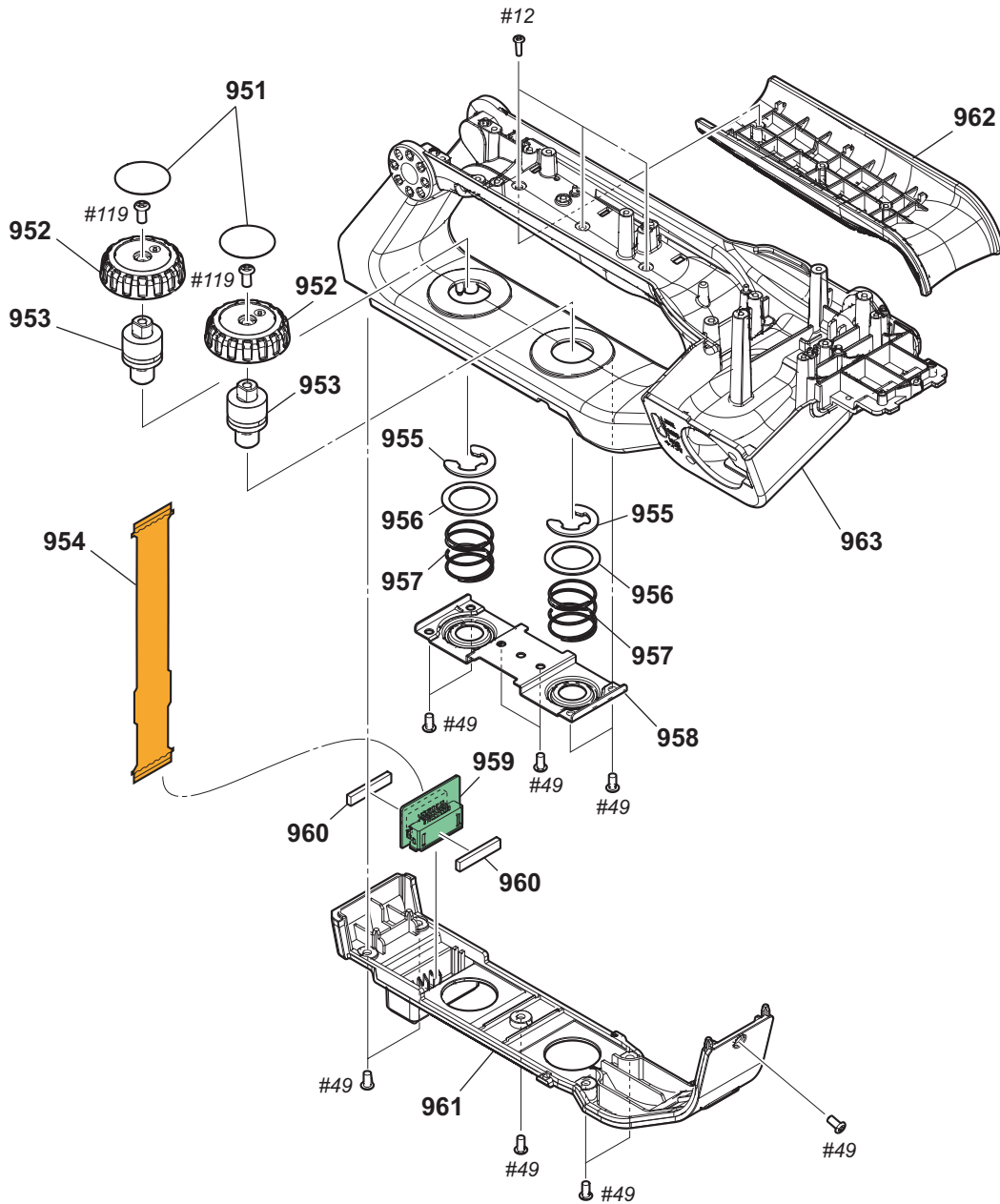
Ref. No. or Q'ty	Part No.	SP Description	Ref. No. or Q'ty	Part No.	SP Description
851	A-2081-881-A	HANDLE BLOCK ASSY (EXCEPT CN1)	867	A-2087-123-A	FP-2329 FLEXIBLE BOARD, COMPLETE
851	A-2090-913-A	HANDLE BLOCK ASSY (CN1)	868	3-288-483-01	SPRING, SS LOCK
852	X-2342-570-1	HOLDER (93000) ASSY, MICROPHONE	869	4-438-734-02	SHOE CAP (875)
853	3-284-080-01	RUBBER, MICROPHONE	870	4-548-624-01	CUSHION (MI), SPACER
854	3-284-081-11	SHEET, RUBBER ADHESIVE	871	A-2115-490-A	SERVICE, HANDLE COVER (UPPER) (EXCEPT CN1)
855	3-284-621-11	CUSHION, MICROPHONE HOLDER	871	A-2115-491-A	SERVICE, HANDLE COVER (UPPER) (CN1)
856	3-284-075-02	COVER, MICROPHONE HOLDER RUBBER	#2	2-635-562-31	SCREW (M1.7)
857	4-119-861-01	RUBBER (93000), HOLDER	#12	3-080-204-21	SCREW, TAPPING, P2
858	4-576-402-01	BRACKET, SS	#49	2-630-005-31	SCREW (M2), NEW TRUSTER, P2
859	1-480-298-11	SWITCH BLOCK, CONTROL (GZ92000)	#53	3-080-206-21	SCREW, TAPPING, P2
860	A-2059-048-A	GP-1019 BOARD, COMPLETE (EXCEPT CN1)	#119	7-627-556-58	SCREW +P 2.6X5
861	1-893-019-11	FP-2231 FLEXIBLE BOARD (EXCEPT CN1)	#338	2-630-005-41	SCREW (M2), NEW TRUSTER, P2
862	4-274-987-01	TAPE (AS 1/2) (C)			
863	3-288-538-11	SHOE, REAR (COLD)			
864	4-540-586-01	BRACKET (GP) (EXCEPT CN1)			
865	4-579-745-01	CLAMP (964), CABLE			
866	4-576-396-01	COVER (FRONT), HANDLE			

Handle Block Section 2



Ref. No. or Q'ty	Part No.	SP Description	Ref. No. or Q'ty	Part No.	SP Description
901	A-2076-339-A	XR-1001 BOARD, COMPLETE	917	4-576-394-01	MOLD, MICROPHONE INNER
902	4-576-399-01	BRACKET, HANDLE (XLR)	#2	2-635-562-31	SCREW (M1.7)
903	4-576-392-01	SWITCH, XLR SLIDE	#49	2-630-005-31	SCREW (M2), NEW TRUSTER, P2
904	4-576-393-01	BASE, XLR SLIDE			
905	4-576-401-01	PLATE, HK SHIELD	#119	7-627-556-58	SCREW +P 2.6X5
906	A-2076-338-A	HK-1001 BOARD, COMPLETE			
907	1-834-809-11	CABLE, FLEXIBLE FLAT (FFC-338)			
908	4-576-404-01	GRILLE, MICROPHONE			
909	4-576-405-01	SCREEN, WIND			
910	4-534-920-01	INSULATOR (470), MICROPHONE			
911	1-542-950-21	MICROPHONE UNIT			
912	4-583-917-01	CUSHION, MICROPHONE FLEXIBLE			
913	4-451-056-01	CUSHION, MICROPHONE			
914	4-576-406-01	FRAME, MICROPHONE			
915	4-576-206-01	COVER (X), TERMINAL			
916	4-578-348-01	SHEET, MICROPHONE			

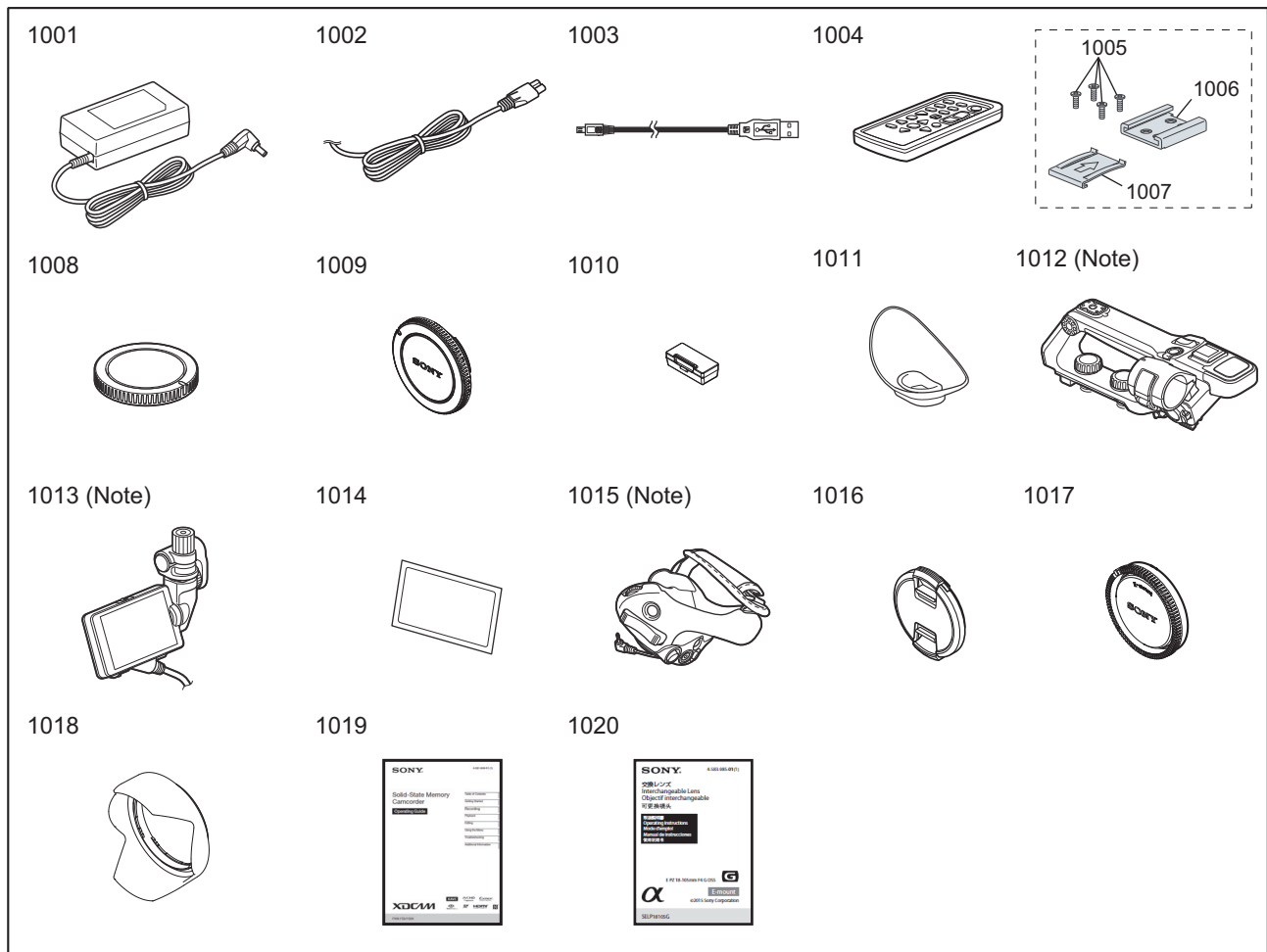
Handle Block Section 3



Ref. No. or Q'ty	Part No.	SP Description	Ref. No. or Q'ty	Part No.	SP Description
951	4-587-493-01	SHEET (964), HANDLE SHAFT	#49	2-630-005-31	SCREW (M2), NEW TRUSTER, P2
952	4-576-439-01	KNOB, HANDLE SHAFT	#119	7-627-556-58	SCREW +P 2.6X5
953	4-544-464-01	SHAFT, HANDLE			
954	1-894-954-11	FP-2340 FLEXIBLE BOARD			
955	7-624-111-04	STOP RING 7.0, TYPE -E			
956	4-544-461-01	PLATE, HANDLE SHAFT FIXED			
957	4-544-462-01	SPRING, HANDLE SHAFT			
958	4-576-403-01	PLATE, HANDLE (BOTTOM)			
959	A-2076-342-A	HC-1001 BOARD, COMPLETE			
960	4-578-351-01	CUSHION, HANDLE CONNECTOR			
961	4-576-390-01	COVER (LOWER), HANDLE			
962	4-576-395-01	GRIP, HANDLE			
963	4-576-388-01	HANDLE			
#12	3-080-204-21	SCREW, TAPPING, P2			

5-3. Accessories

Except Japanese Model



Ref. No. or Q'ty	Part No.	SP Description
1001	△ 1-493-042-33	AC Adaptor (AC-UES1230)
1002	△ 1-846-101-51	Power cord (mains lead) (UC)
1002	△ 1-846-428-33	Power cord (mains lead) (CEE)
1002	△ 1-846-433-33	Power cord (mains lead) (CN1)
1002	△ 1-848-066-31	Power cord (mains lead) (CEE)
1003	1-846-615-12	USB cable
1004	1-487-540-13	Wireless Remote Commander (RMT-845)
1005	2-630-005-31	screws
1006	3-069-286-03	Accessory shoe
1007	3-288-615-02	Accessory shoe plate
1008	4-188-536-01	Body cap
1009	4-579-209-01	Grip attachment point cover
1010	4-579-210-01	Handle connector protective cap
1011	X-2590-187-1	Large eyecup
1012	(Note)	XLR handle
1013	(Note)	LCD screen
1014	4-587-497-01	LCD screen protective sheet
1015	(Note)	Grip
1016	X-2582-127-1	Front lens cap (PXW-FS5K/FS5M2K)
1017	4-159-701-03	Rear lens cap (PXW-FS5K/FS5M2K)
1018	4-475-055-01	Lens hood (PXW-FS5K/FS5M2K)
1019	4-581-849-11 *	Operating Guide (ENGLISH)
1019	4-581-849-21 *	Operating Guide (SIMPLIFIED CHINESE)

Ref. No. or Q'ty	Part No.	SP Description
1019	4-581-849-31 *	Operating Guide (FRENCH)
1019	4-581-849-41 *	Operating Guide (GERMAN)
1019	4-581-849-51 *	Operating Guide (ITALIAN)
1019	4-581-849-61 *	Operating Guide (SPANISH)
1020	4-583-985-01 *	Operating Guide (JAPANESE, ENGLISH, FRENCH, SPANISH, SIMPLIFIED CHINESE) (PXW-FS5K/FS5M2K)
1020	4-583-985-11 *	Operating Guide (GERMAN, DUTCH, SWEDISH, ITALIAN, PORTUGUESE) (PXW-FS5K/FS5M2K)

Note

- Refer to “Handle Block Section 1” for the XLR handle.
- Refer to “LCD Block Section” for the LCD screen.
- Refer to “Grip Block Section 1” for the Grip.