

SONY[®]

SOLID-STATE MEMORY CAMCORDER

PXW-X200

PXW-X280

XDCM

MPEG HD422

SxS

Exmor

HDMI

i

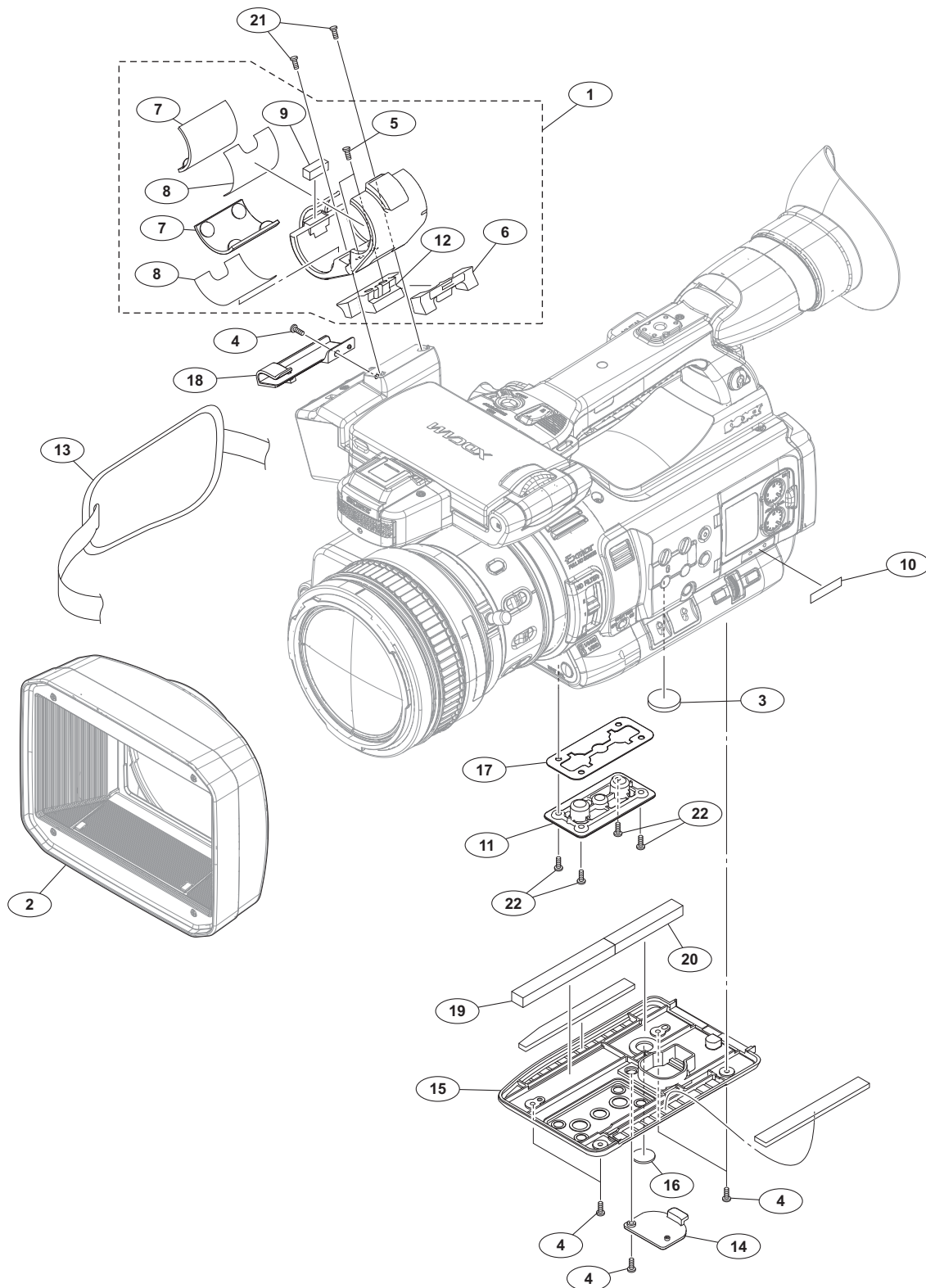
XAVC

SERVICE MANUAL

1st Edition

5-2. Exploded Views

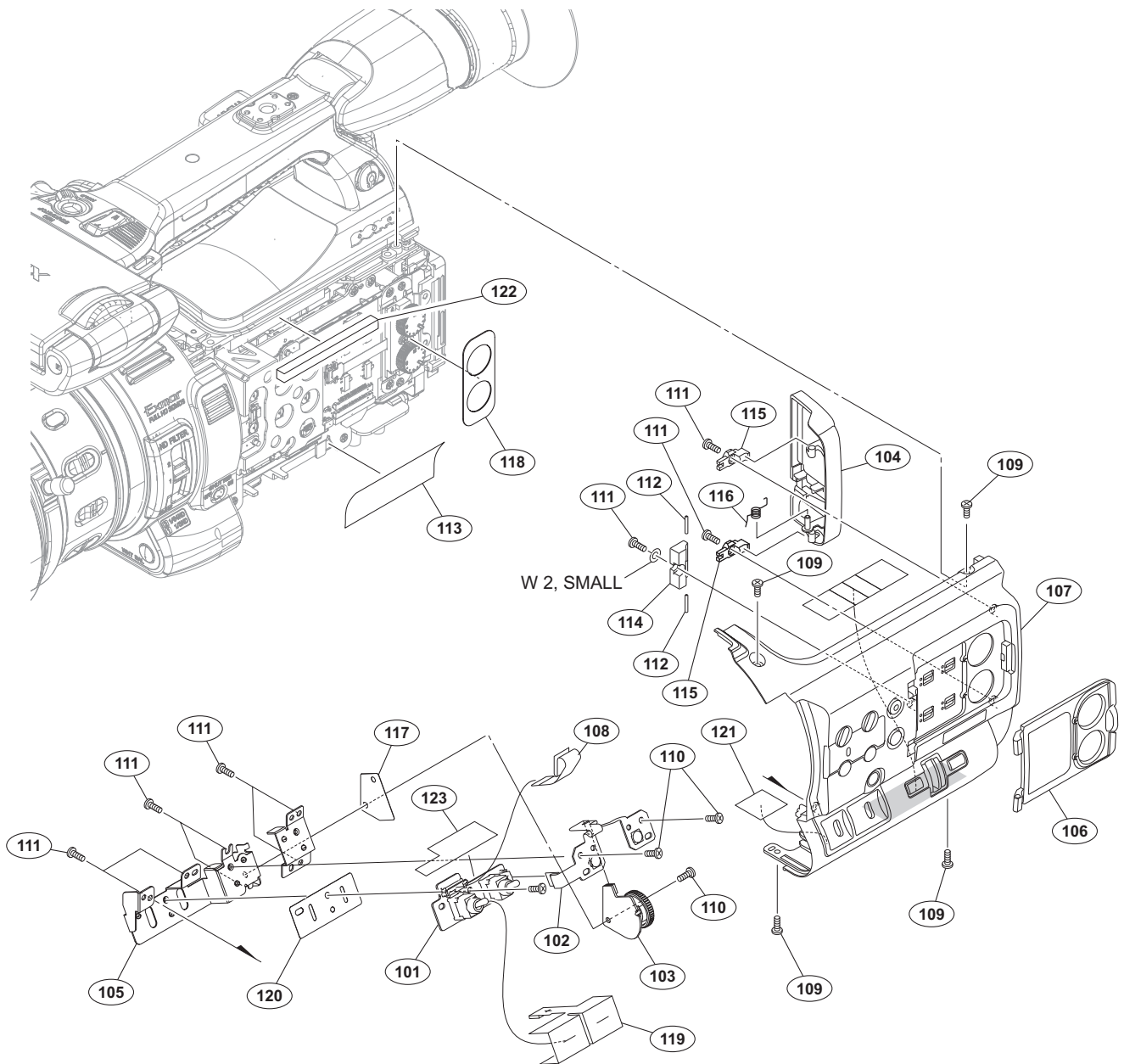
Overall



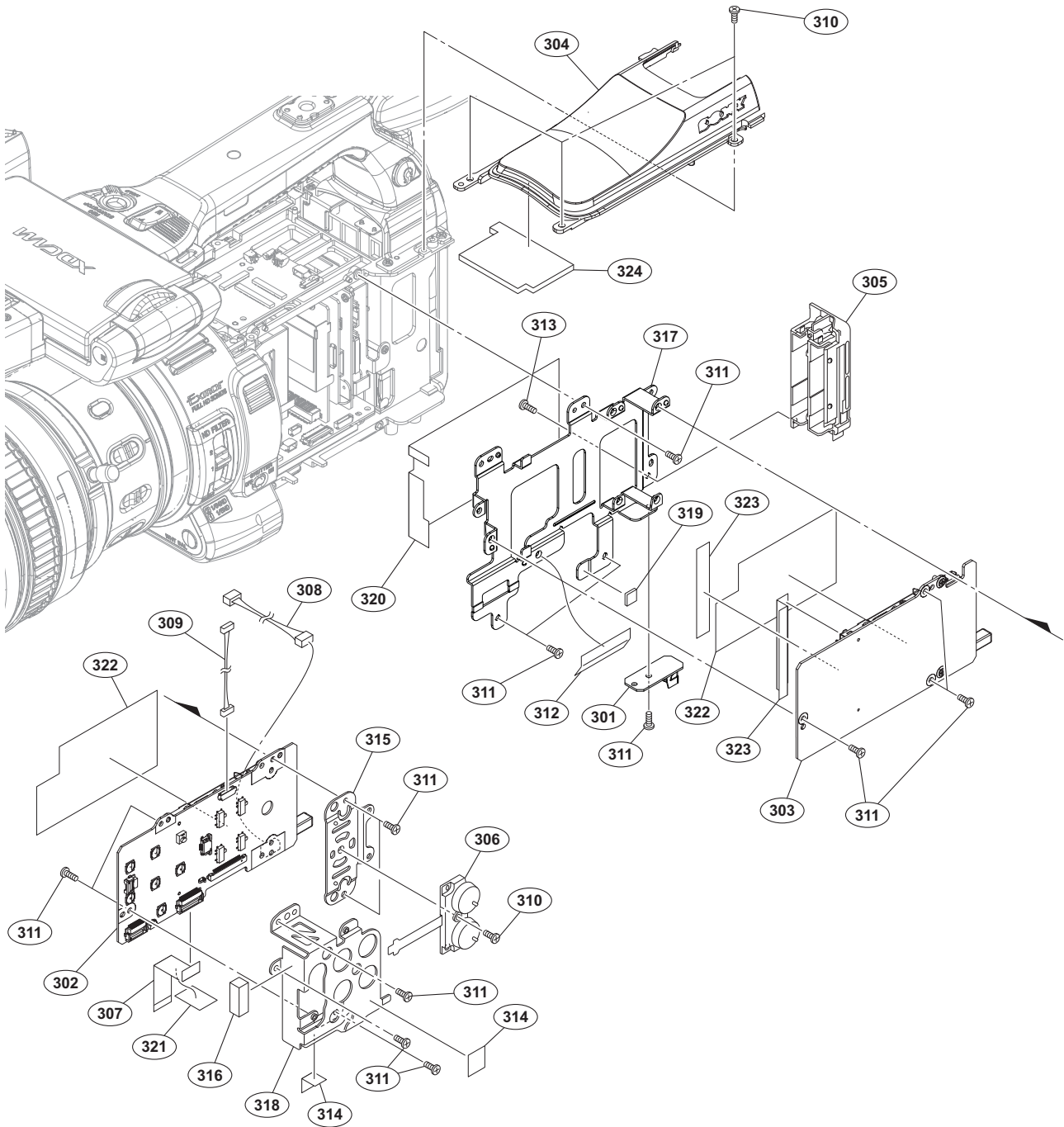
Overall

No.	Part No.	SP Description
1	X-2342-570-5	s HOLDER (93000) ASSY, MICROPHONE
2	X-2590-218-1	s HOOD ASSY
3	△ 1-528-174-72	s BATTERY, LITHIUM (CR2032 TYPE)
4	2-630-005-01	s SCREW (M2), NEW TRUSTER, P2 [P2X5]
5	3-080-206-21	s SCREW, TAPPING, P2 [TP2X5]
6	3-284-075-03	s COVER, MICROPHONE HOLDER RUBBER
7	3-284-080-02	s RUBBER, MICROPHONE
8	3-284-081-11	s SHEET, RUBBER ADHESIVE
9	3-284-621-11	s CUSHION, MICROPHONE HOLDER
10	3-870-012-02	s LABEL (HD1500), XDCAM
11	4-119-234-21	s WASHER, TRIPOD
12	4-119-861-01	s RUBBER (93000), HOLDER
13	4-275-256-01	s BELT, GRIP
14	4-427-934-02	s BATTERY LID
15	4-427-935-03	s PANEL, BOTTOM
16	4-427-940-01	s COVER USER TAP
17	4-433-453-01	s SPACER, BOTTOM
18	4-549-881-01	s HOLDER, MICROPHONE CABLE
19	4-562-943-01	s CUSHION, BOTTOM F
20	4-562-947-01	s CUSHION, BOTTOM R
21	7-621-775-20	s SCREW +P 2.6X5
22	7-627-556-58	s SCREW +P 2.6X5

Inside

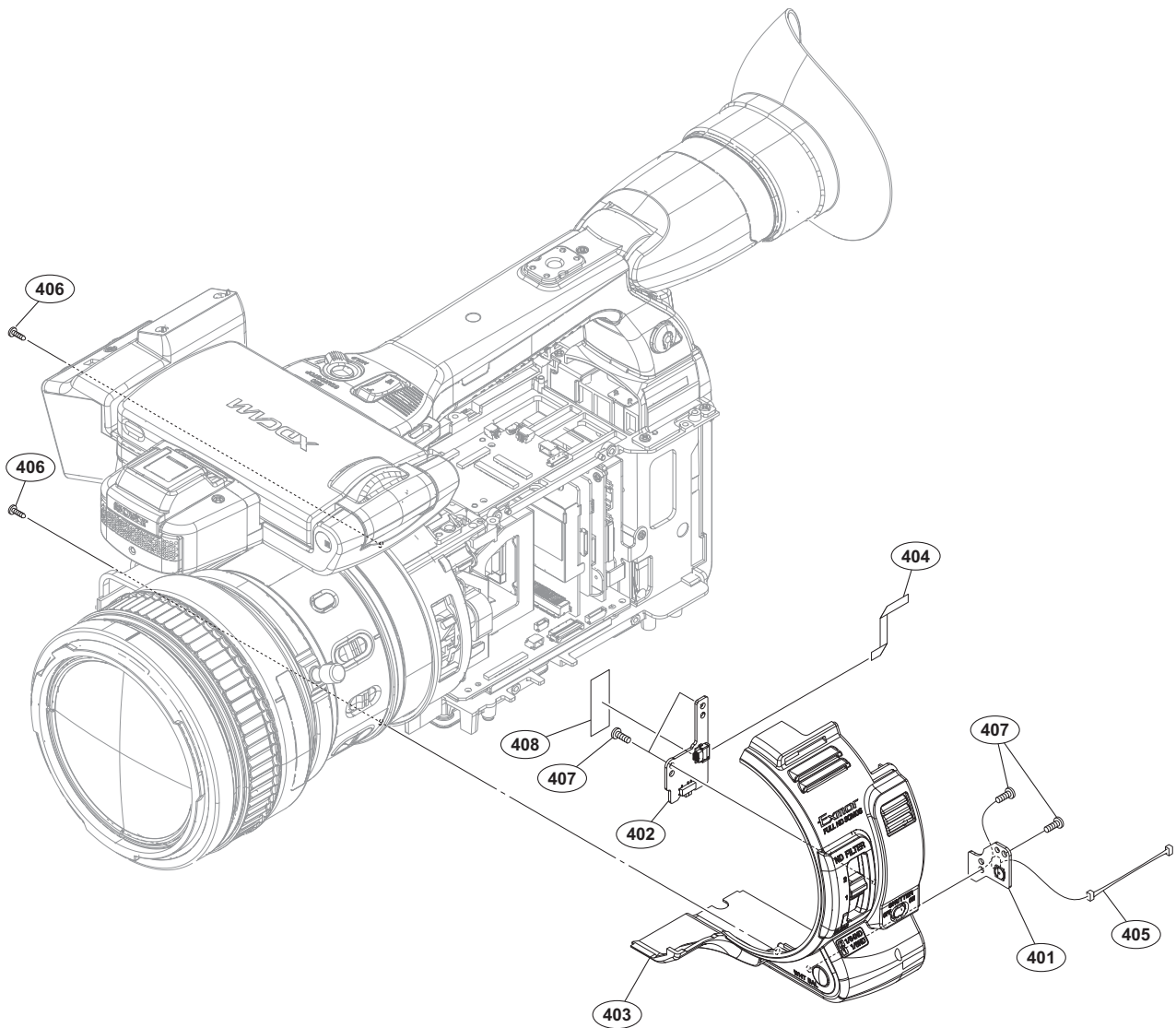


No.	Part No.	SP Description	No.	Part No.	SP Description
101	A-2060-375-A	s MOUNTED CIRCUIT BOARD, SW-1639	119	4-446-018-01	s SHEET (H), SW CONDUCTIVITY
102	A-2060-377-A	s MOUNTED CIRCUIT BOARD, SW-1640	120	4-446-019-01	s INSULATING SHEET (H), SW
103	A-2060-387-A	s MOUNTED CIRCUIT BOARD, SW-1633	121	4-454-159-02	s SHEET (E), LIGHT INTERCEPTION
104	X-2584-458-3	s LID ASSY, SXS	122	4-562-944-01	s CUSHION, INSIDE
105	X-2584-460-1	s BRACKET (A) ASSY, SWITCH	123	4-565-499-01	s SHEET (B), LIGHT INTERCEPTION
106	X-2584-461-3	s AU COVER SUB ASSY			
107	X-2590-565-1	s PANEL SUB ASSY, INSIDE			
108	1-846-287-12	s CABLE, FLEXIBLE FLAT (15 CORE)	7-688-001-02	s W 2, SMALL	
109	2-630-005-01	s SCREW (M2), NEW TRUSTER, P2 [P2X5]			
110	3-056-233-21	s SCREW (M2), LOCK ACE, P2 [P2X4]			
111	3-080-206-21	s SCREW, TAPPING, P2 [TP2X5]			
112	3-669-481-08	s PIN (DIA.1X8), PARALLEL			
113	3-878-657-01	s TAPE 50			
114	4-428-406-03	s RETAINER, AU SHAFT			
115	4-428-407-01	s RETAINER, LID SHAFT			
116	4-428-408-01	s SPRING, HELICAL TORSION COIL			
117	4-428-411-01	s SW INSULATING SHEET C			
118	4-428-985-01	s COVER, AU VOLUME			



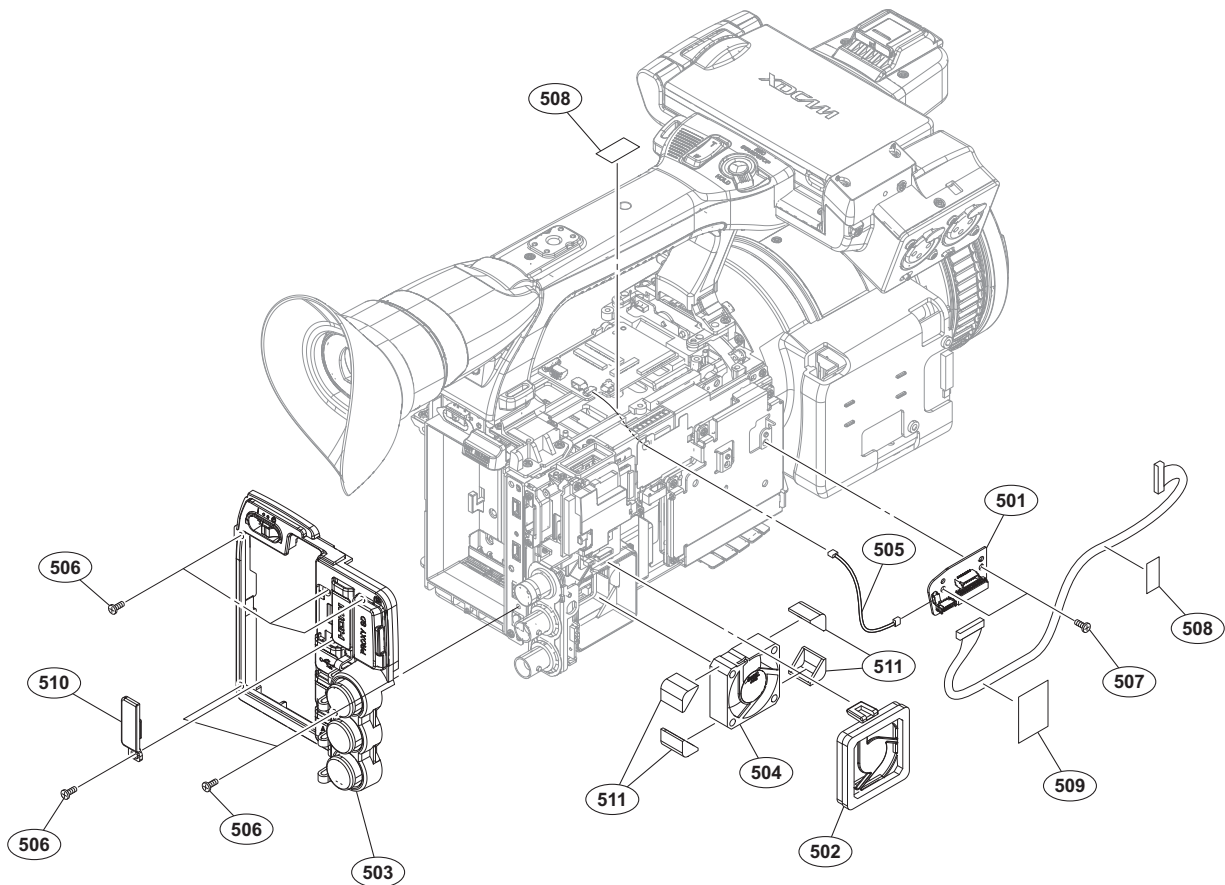
No.	Part No.	SP Description	No.	Part No.	SP Description
301	A-2060-383-A	s MOUNTED CIRCUIT BOARD, SW-1641	315	4-428-300-02	s PLATE, AU HOLD
302	A-2060-388-A	s MOUNTED CIRCUIT BOARD, SWC-57	316	4-435-865-02	s GASKET (G), MAIN
303	A-2063-057-A	s MOUNTED CIRCUIT BOARD, EC-84	317	4-437-101-01	s PLATE (H), INSIDE MAIN
304	A-2069-612-A	s PANEL ASSY (RP), TOP	318	4-437-102-01	s PLATE (H), INSIDE SHIELD
305	X-2584-450-3	s ESCUTCHEON ASSY, SXS	319	4-446-005-02	s GASKET MAIN L
306	1-480-457-41	s BLOCK, AU VOLUME	320	4-456-801-02	s SHEET (J), LIGHT INTERCEPTION
307	1-846-286-11	s CABLE, FLEXIBLE FLAT (20 CORE)	321	4-541-840-01	s SHEET, FFC PROTECTION
308	1-967-191-11	s HARNESS (LED)	322	4-559-332-01	s SHIELD TAPE (SXS)
309	1-970-573-11	s SUB HARNESS (IF1264-SWC57)	323	4-564-121-01	s SHEET (A), LIGHT INTERCEPTION
310	2-630-005-01	s SCREW (M2), NEW TRUSTER, P2 [P2X5]	324	4-564-642-01	s SHEET (C), LIGHT INTERCEPTION
311	3-056-233-21	s SCREW (M2), LOCK ACE, P2 [P2X4]			
312	3-079-115-01	s TAPE AS			
313	3-080-206-21	s SCREW, TAPPING, P2 [TP2X5]			
314	3-278-255-01	s TAPE (BT)			

Front

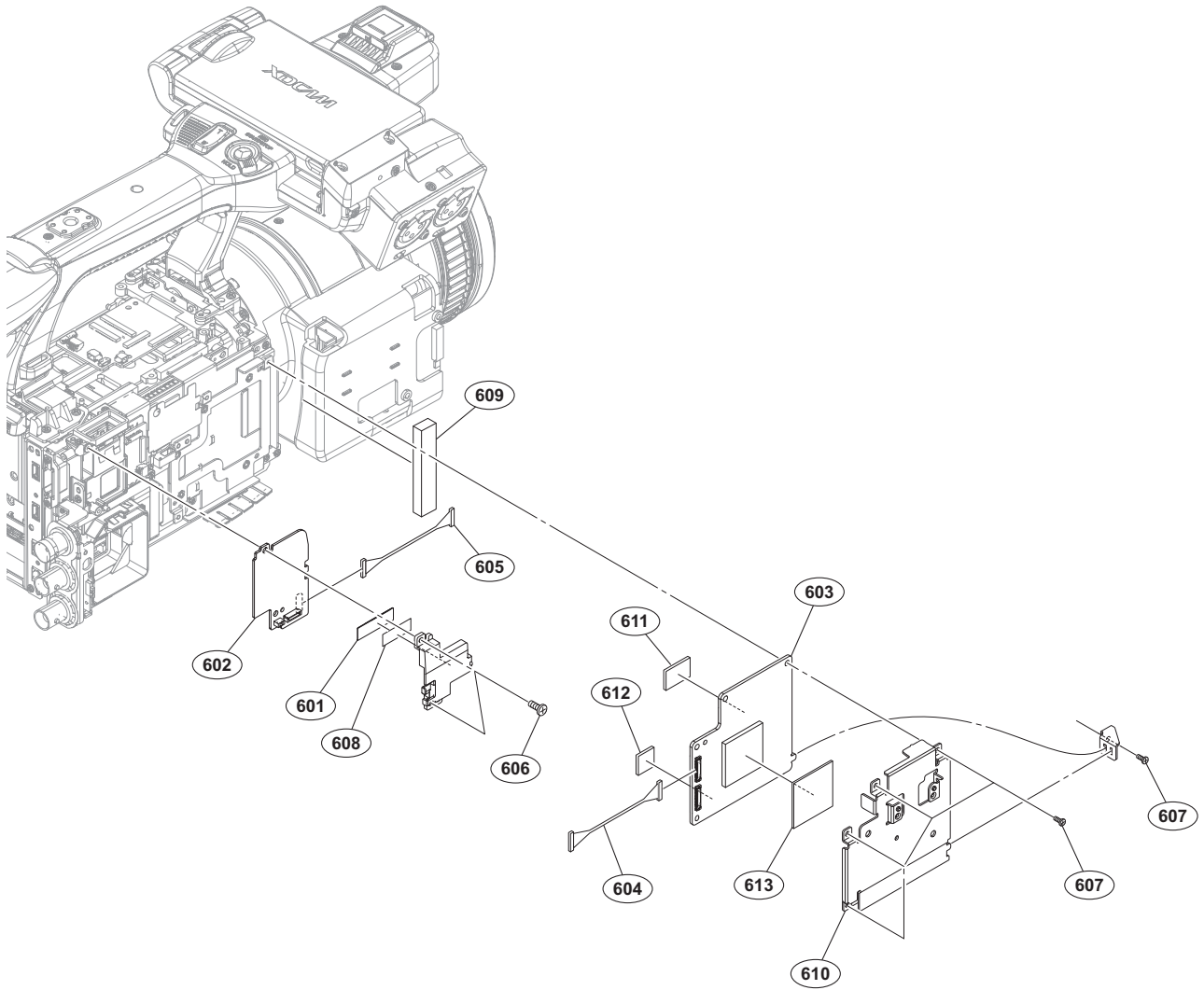


No.	Part No.	SP Description
401	A-1912-040-A	s MOUNTED CIRCUIT BOARD, SW-1559
402	A-1885-984-A	s MOUNTED CIRCUIT BOARD, SW-1573
403	X-2590-564-1	s PANEL SUB ASSY, FRONT
404	1-846-304-11	s CABLE, FLEXIBLE FLAT (6 CORE)
405	1-967-534-11	s SUB HARNESS (LCD-DET)
406	3-080-206-21	s SCREW, TAPPING, P2 [TP2X5]
407	3-080-205-31	s SCREW, TAPPING, P2 [TP2X6]
408	3-278-255-01	s TAPE (BT)

Rear

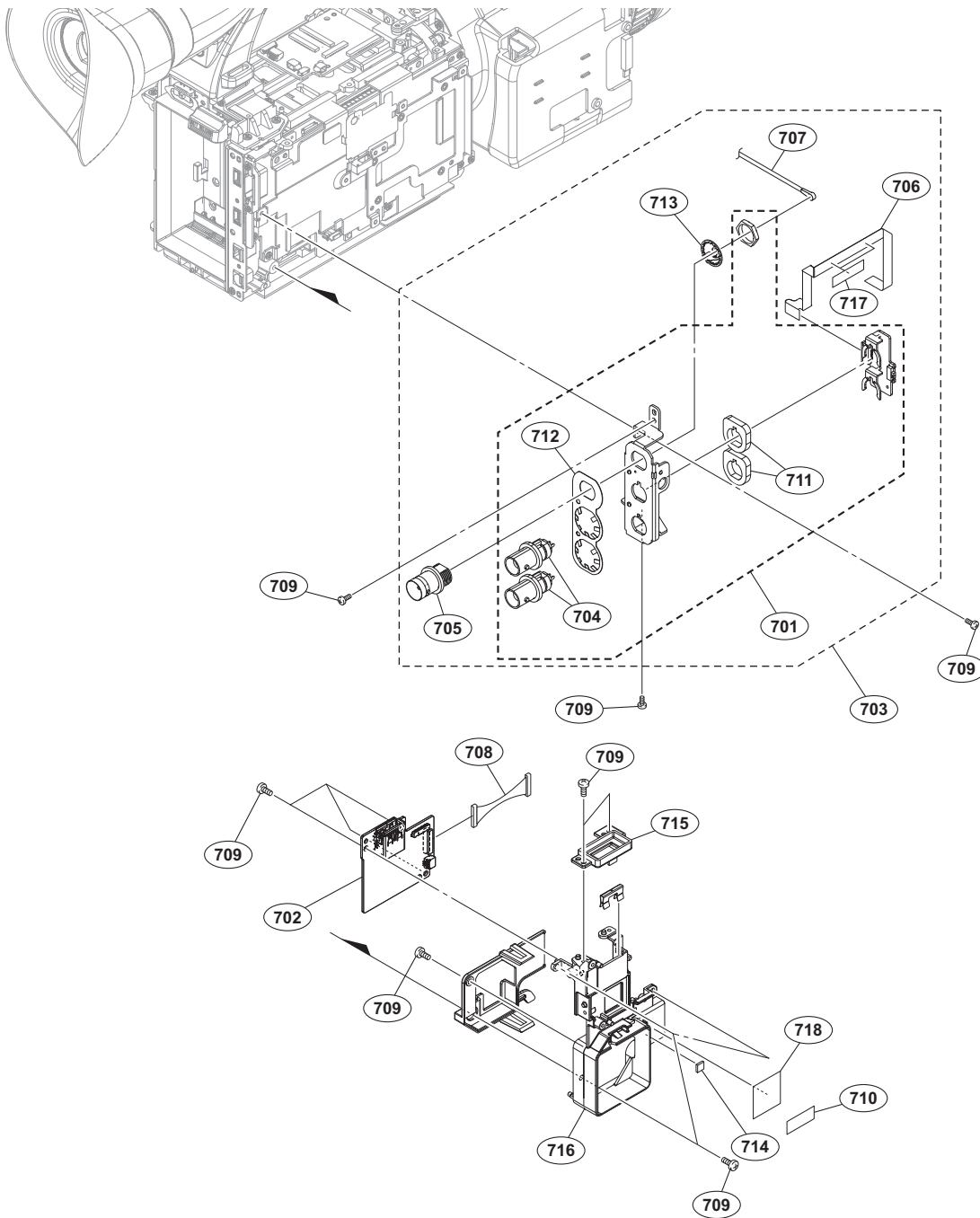


No.	Part No.	SP Description
501	A-2060-372-A s	MOUNTED CIRCUIT BOARD, CN-3749
502	X-2590-559-1 s	COVER (F) ASSY, FAN CASE
503	X-2590-560-1 s	REAR PANEL ASSY
504	△ 1-855-292-21 s	FAN, DC (30 SQUARE)
505	1-970-563-11 s	SUB HARNESS (IF1264-CN3749)
506	2-630-005-01 s	SCREW (M2), NEW TRUSTER, P2 [P2X5]
507	3-056-233-21 s	SCREW (M2), LOCK ACE, P2 [P2X4]
508	3-278-255-01 s	TAPE (BT)
509	4-121-237-01 s	TAPE (20X30)
510	4-428-375-01 s	USB COVER
511	4-458-849-01 s	FAN HOLDER



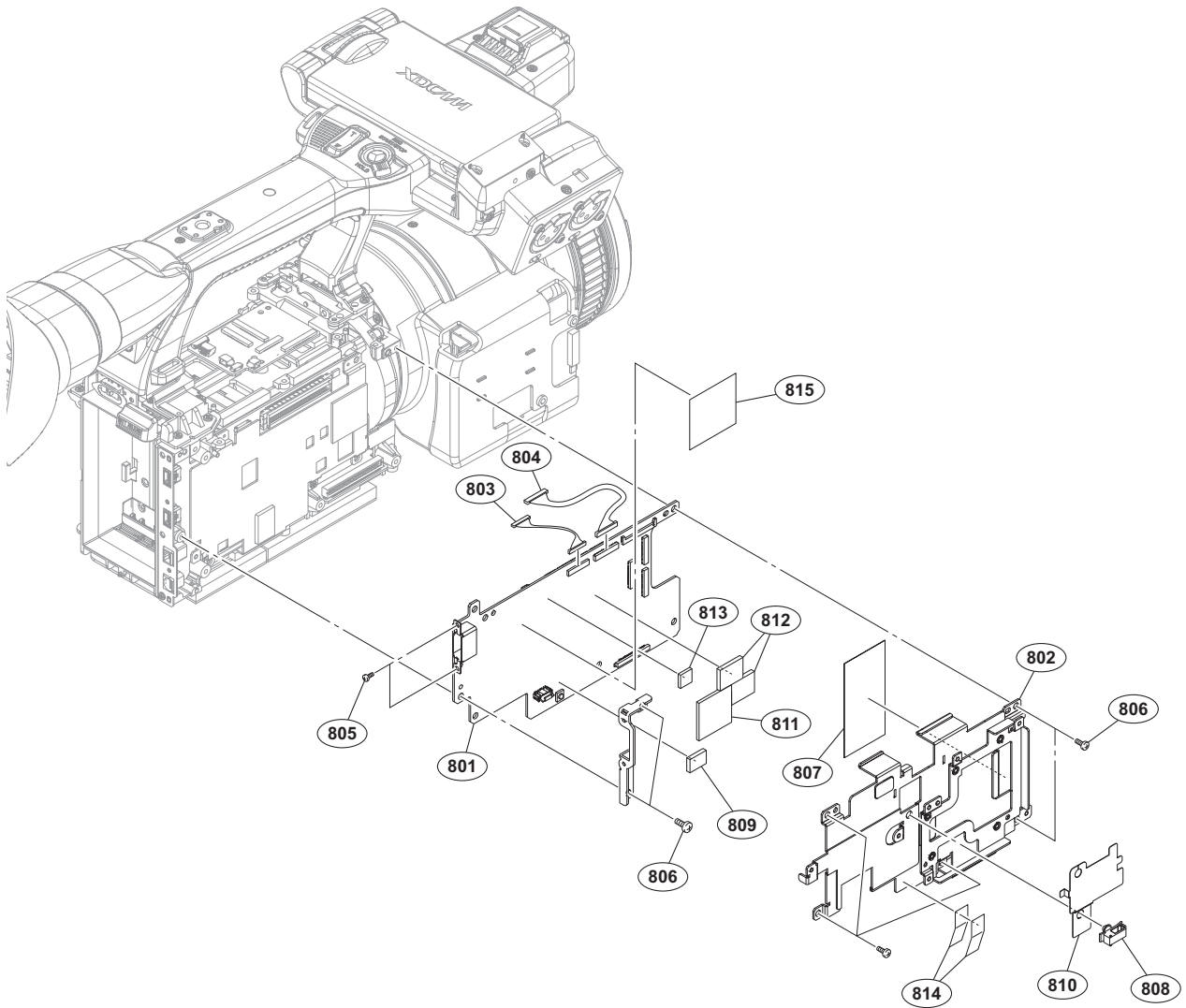
No.	Part No.	SP Description
601	A-2040-499-A	s ANT ASSY
602	A-2060-409-A	s MOUNTED CIRCUIT BOARD, SD-59
603	A-2063-702-B	s MOUNTED CIRCUIT BOARD, WM (RP)
604	1-970-567-11	s HARNESS (IO-WA-20P)
605	1-970-574-11	s HARNESS (SD-WA-20P)
606	2-630-005-01	s SCREW (M2), NEW TRUSTER, P2 [P2X5]
607	3-056-233-21	s SCREW (M2), LOCK ACE, P2 [P2X4]
608	4-489-010-01	s SHEET (ANT), ADHESIVE
609	4-542-419-01	s GASKET (10X15X50)
610	4-549-844-01	s SHIELD COVER, WIFI
611	4-549-854-01	s SHEET 2 (10X15), RADIATION
612	4-549-855-01	s SHEET 2.5 (12X12), RADIATION
613	4-549-856-01	s SHEET 1 (24X24), RADIATION

IO Assembly/IO-263 Board



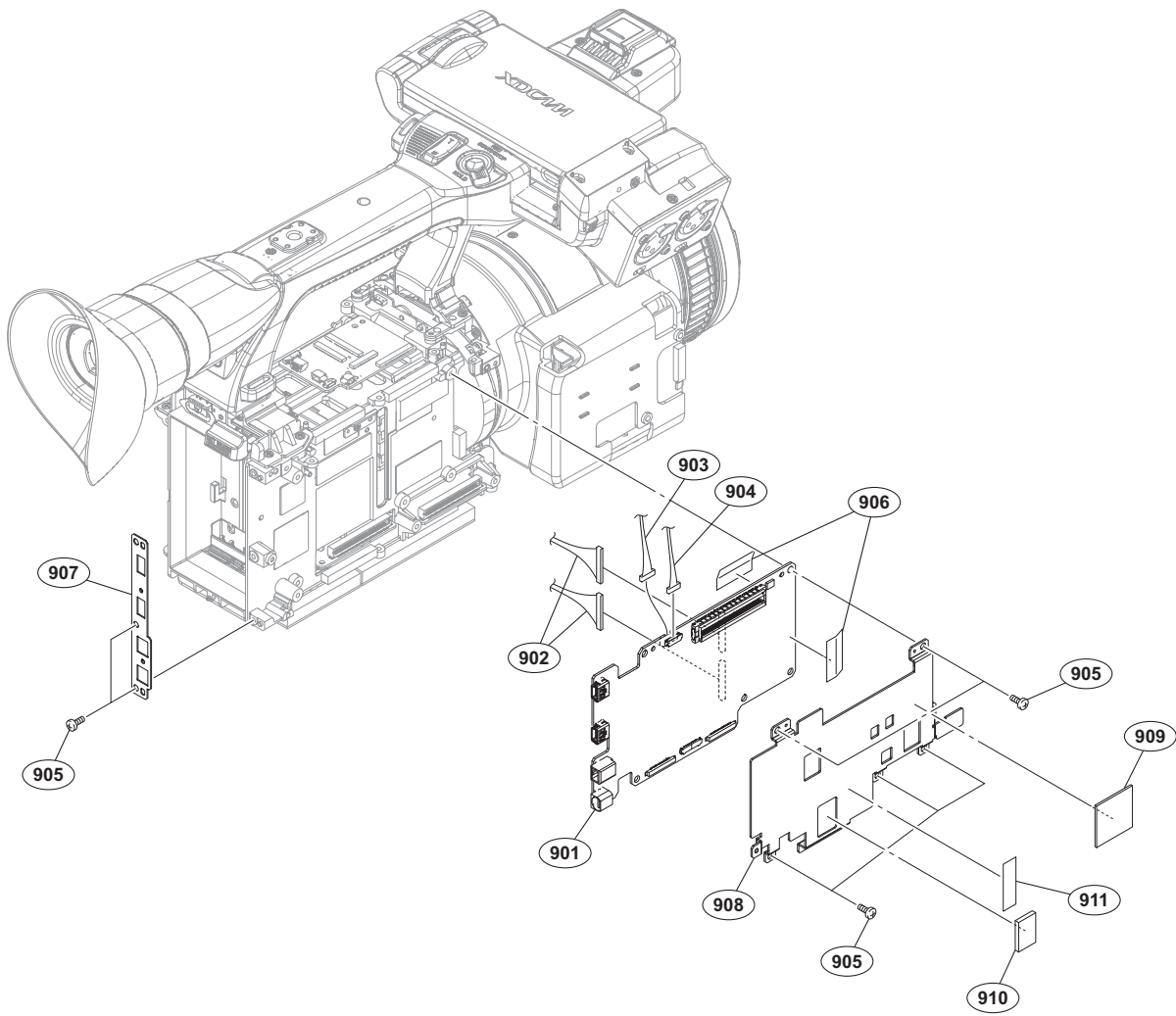
No.	Part No.	SP Description	No.	Part No.	SP Description
701	A-2060-402-A	s MOUNTED CIRCUIT BOARD, IO-264	716	4-549-848-01	s CASE, FAN
702	A-2060-408-A	s MOUNTED CIRCUIT BOARD, IO-263	717	4-563-402-11	s SHIELD TAPE (DCP)
703	A-2064-924-A	s IO-264 ASSY	718	4-564-813-01	s CONDUCTIVE TAPE (SDI)
704	1-766-380-11	s CONNECTOR, COAXIAL (BNC TYPE)			
705	1-784-240-11	s CONVERTER, COAXIAL CONNECTOR			
706	1-848-636-11	s FFC (10 CORE) TYPEG			
707	1-970-550-11	s COAXIAL HARNESS (135MM)			
708	1-970-570-11	s SUB HARNESS (WA_POWER XH)			
709	3-056-233-21	s SCREW (M2), LOCK ACE, P2 [P2X4]			
710	3-278-255-01	s TAPE (BT)			
711	4-428-365-01	s SPACER, V-OUT			
712	4-428-367-02	s PLATE, BNC GND			
713	4-428-368-01	s WASHER, BNC COAXIAL FIXED			
714	4-463-553-01	s GASKET (4X4X1)			
715	4-549-846-01	s ESCUTCHEON, USB			

DCP



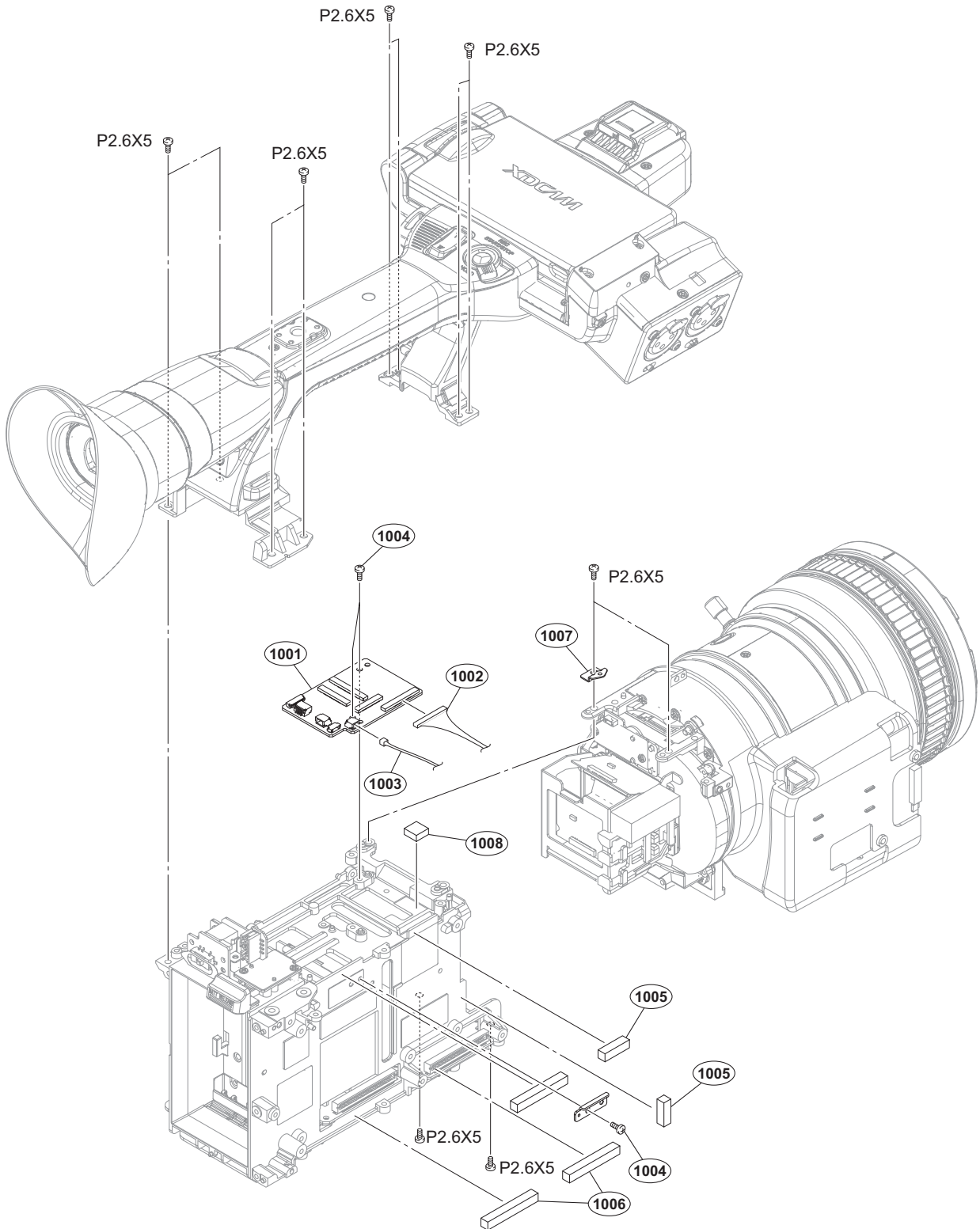
No.	Part No.	SP Description
801	A-2060-738-A s	MOUNTED CIRCUIT BOARD, DCP-69
802	X-2590-561-1 s	HEAT SPREADER DCP ASSY
803	1-970-569-11 s	HARNESS (DCP-WA-20P)
804	1-970-571-11 s	HARNESS (DCP-IF-32P)
805	2-635-562-21 s	SCREW (M1.7) [P1.7X3]
806	3-056-233-21 s	SCREW (M2), LOCK ACE, P2 [P2X4]
807	3-878-657-01 s	TAPE 50
808	4-098-036-01 s	SADDLE WIRE (A)
809	4-549-839-01 s	SHEET 2 (10X7), RADIATION
810	4-549-841-01 s	HOLDER, HARNESS IO
811	4-549-842-01 s	SHEET T1.5 (20X20) RADIATION
812	4-549-843-01 s	SHEET T2 (14X11) RADIATION
813	4-549-857-01 s	SHEET 1.5 (7X7), RADIATION
814	4-563-402-11 s	SHIELD TAPE (DCP)
815	4-564-583-01 s	SHIELD TAPE (ANDX)

DPR



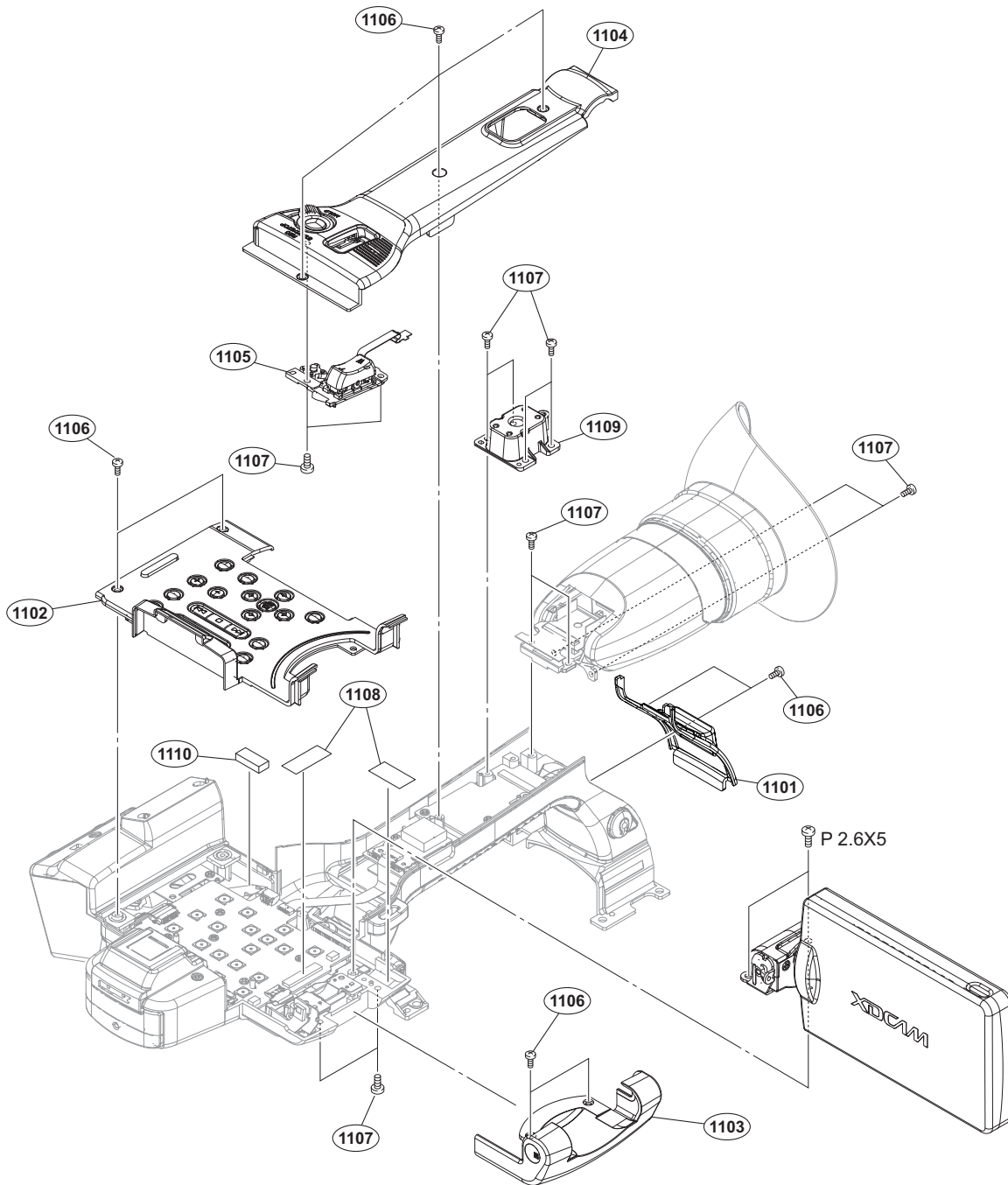
No.	Part No.	SP Description
901	A-2060-737-A	s MOUNTED CIRCUIT BOARD, DPR-364
902	1-968-346-11	s HARNESS (DPR-EC/SWC)
903	1-970-568-11	s HARNESS (IO-DPR-10P)
904	1-970-575-11	s SUB HARNESS (DPR364-SD59)
905	3-056-233-21	s SCREW (M2), LOCK ACE, P2 [P2X4]
906	3-278-255-01	s TAPE (BT)
907	4-427-938-01	s BRACKET USB
908	4-549-852-01	s HEAT SPREADER DPR
909	4-549-853-01	s SHEET 1 (21X21), RADIATION
910	4-549-854-01	s SHEET 2 (10X15), RADIATION
911	4-563-402-11	s SHIELD TAPE (DCP)

IF-1264 Board



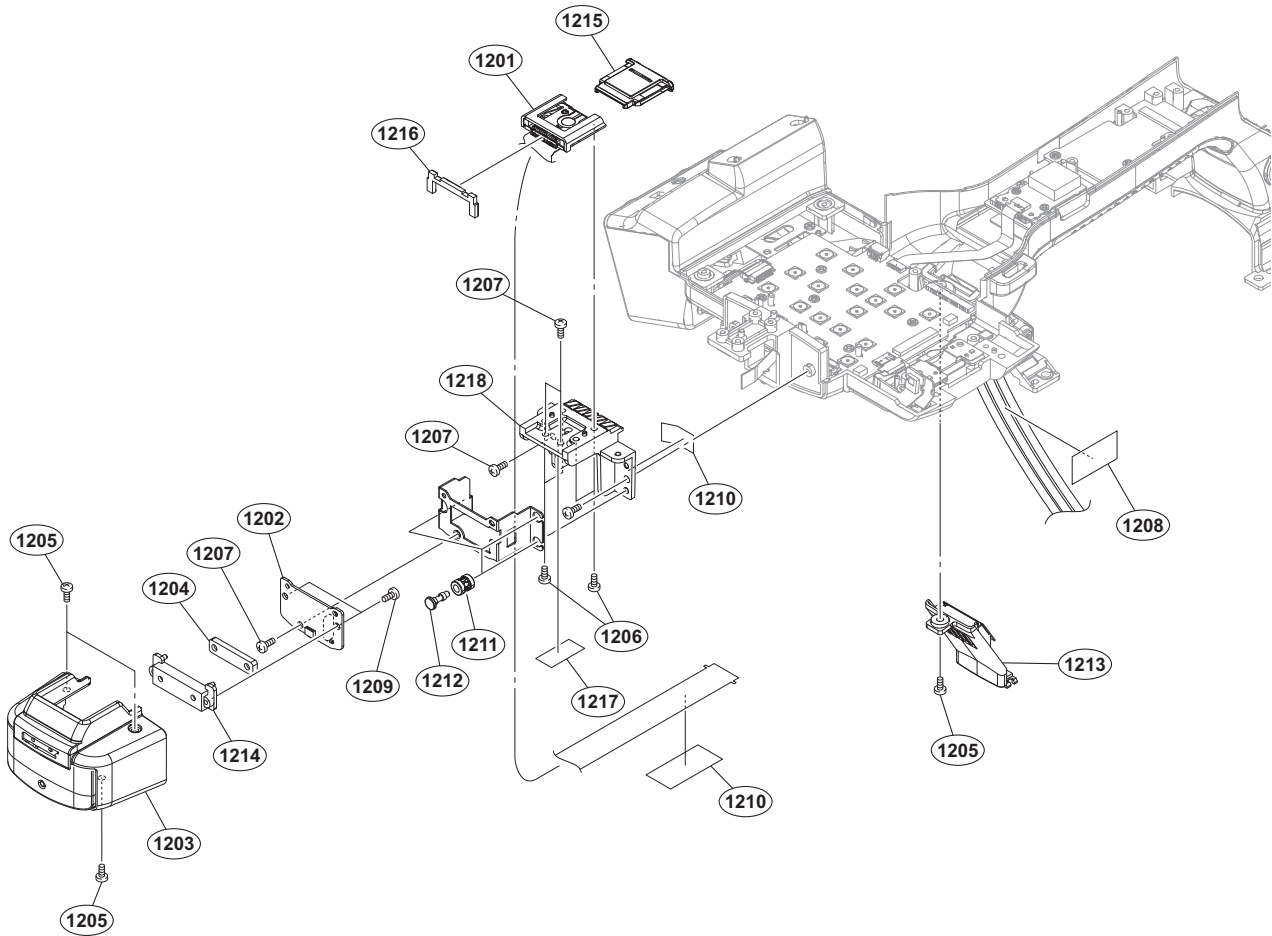
No.	Part No.	SP Description	No.	Part No.	SP Description
1001	A-2060-407-A	s MOUNTED CIRCUIT BOARD, IF-1264	1008	4-549-866-01	s IF CUSHION
1002	1-970-564-11	s HARNESS (AU-IF-50P)			
1003	1-970-565-11	s SUB HARNESS (AU361-IF1264)			
1004	3-056-233-21	s SCREW (M2), LOCK ACE, P2 [P2X4]		7-627-556-58	s SCREW +P 2.6X5
1005	4-129-036-02	s FOAM (HF), SHIELD			
1006	4-427-942-02	s GASKET MAIN A			
1007	4-441-556-01	s BRACKET, FRONT			

Handle-1



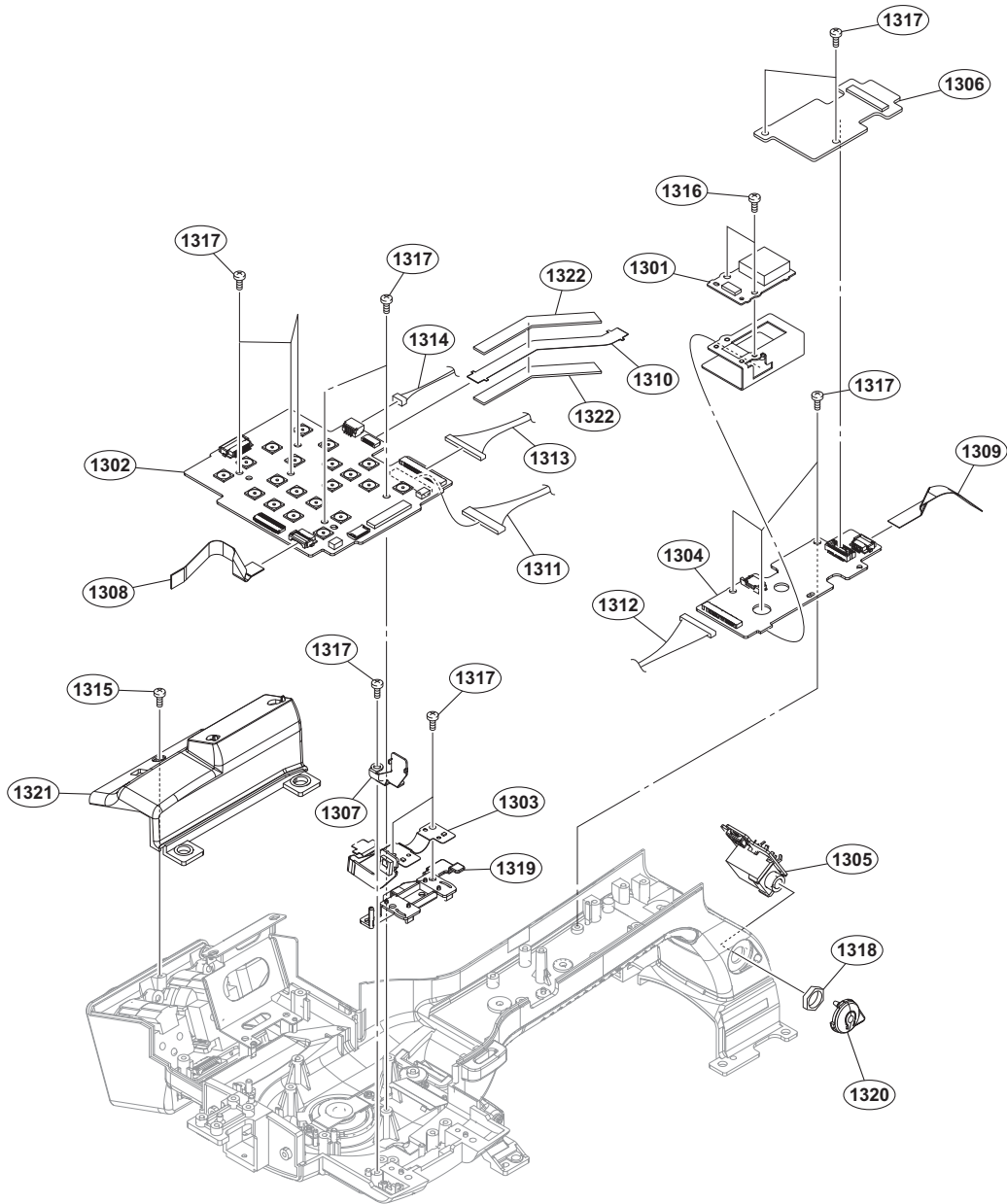
No.	Part No.	SP Description
1101	X-2584-439-2	s CABINET ASSY, HANDLE (REAR)
1102	X-2584-441-7	s PANEL ASSY, CONTROL
1103	X-2584-442-2	s COVER ASSY, HINGE (FRONT)
1104	X-2590-567-1	s CASE ASSY, HANDLE (UPPER)
1105	1-480-298-11	s SWITCH BLOCK, CONTROL (GZ92000)
1106	2-630-005-01	s SCREW (M2), NEW TRUSTER, P2 [P2X5]
1107	3-056-233-21	s SCREW (M2), LOCK ACE, P2 [P2X4]
1108	3-278-255-01	s TAPE (BT)
1109	3-288-538-11	s SHOE, REAR (COLD)
1110	4-433-494-02	s GASKET (F), MAIN
	7-627-556-58	s SCREW +P 2.6X5

Handle-2



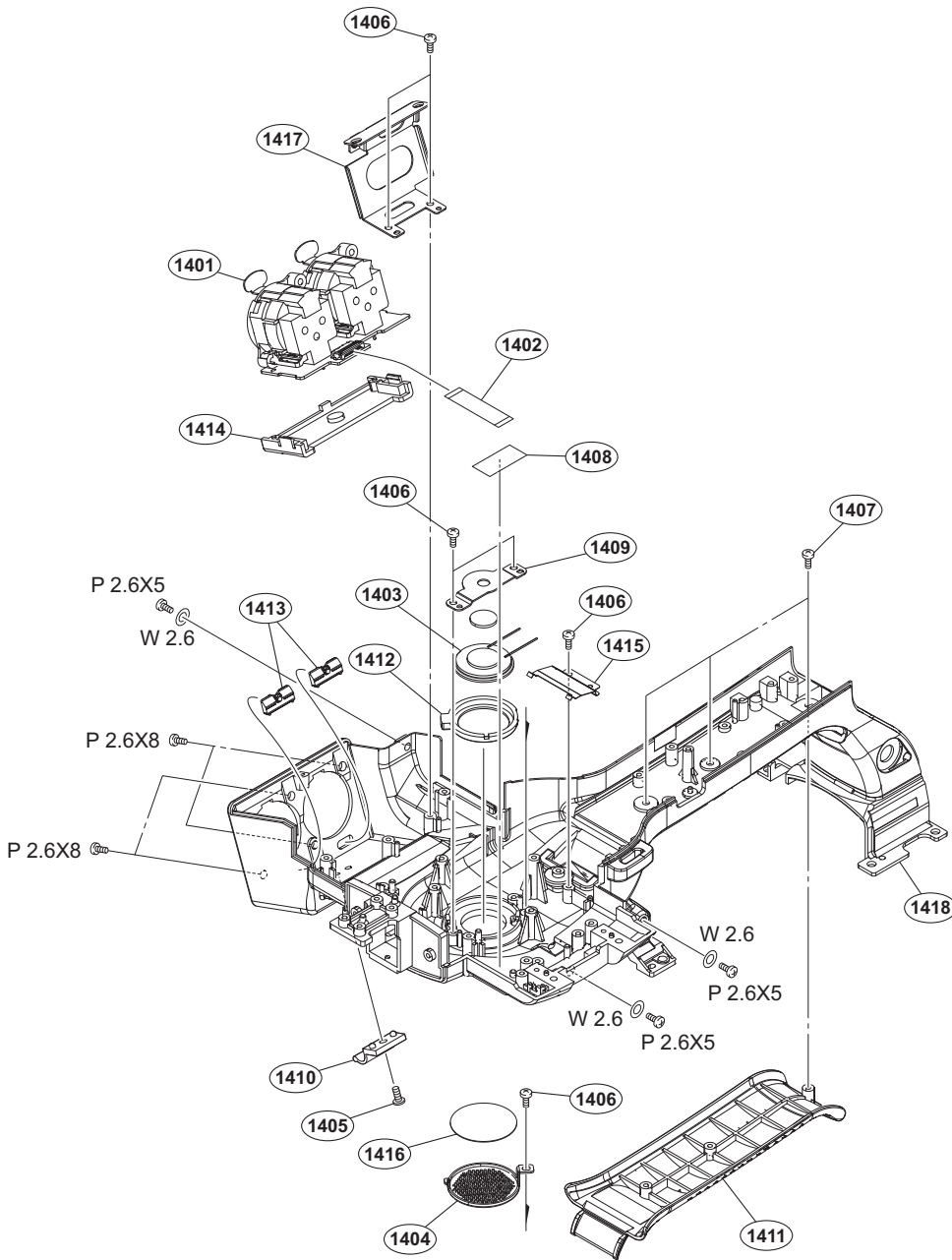
No.	Part No.	SP Description
1201	A-2058-847-A	s MOUNTED CIRCUIT BOARD, FP-2245
1202	A-2060-386-A	s MOUNTED CIRCUIT BOARD, FP-210
1203	A-2069-611-A	s CABINET ASSY (RP), MICROPHONE
1204	1-542-862-11	s MICROPHONE UNIT
1205	2-630-005-01	s SCREW (M2), NEW TRUSTER, P2 [P2X5]
1206	2-635-562-31	s SCREW (M1.7) [P1.7X4]
1207	3-056-233-21	s SCREW (M2), LOCK ACE, P2 [P2X4]
1208	3-079-115-01	s TAPE AS
1209	3-080-206-21	s SCREW, TAPPING, P2 [TP2X5]
1210	3-278-255-01	s TAPE (BT)
1211	3-617-812-01	s VIBRATION PROOF, RUBBER
1212	3-825-467-02	s SCREW, STEP
1213	4-428-150-03	s FR-CABINET, HANDLE
1214	4-428-154-01	s CASE, MICROPHON
1215	4-438-734-02	s SHOE CAP (875)
1216	4-440-573-01	s WP SHOE CUSHION
1217	4-489-010-01	s SHEET (ANT), ADHESIVE
1218	4-549-883-02	s HOLDER, MI SHOE

Handle-3



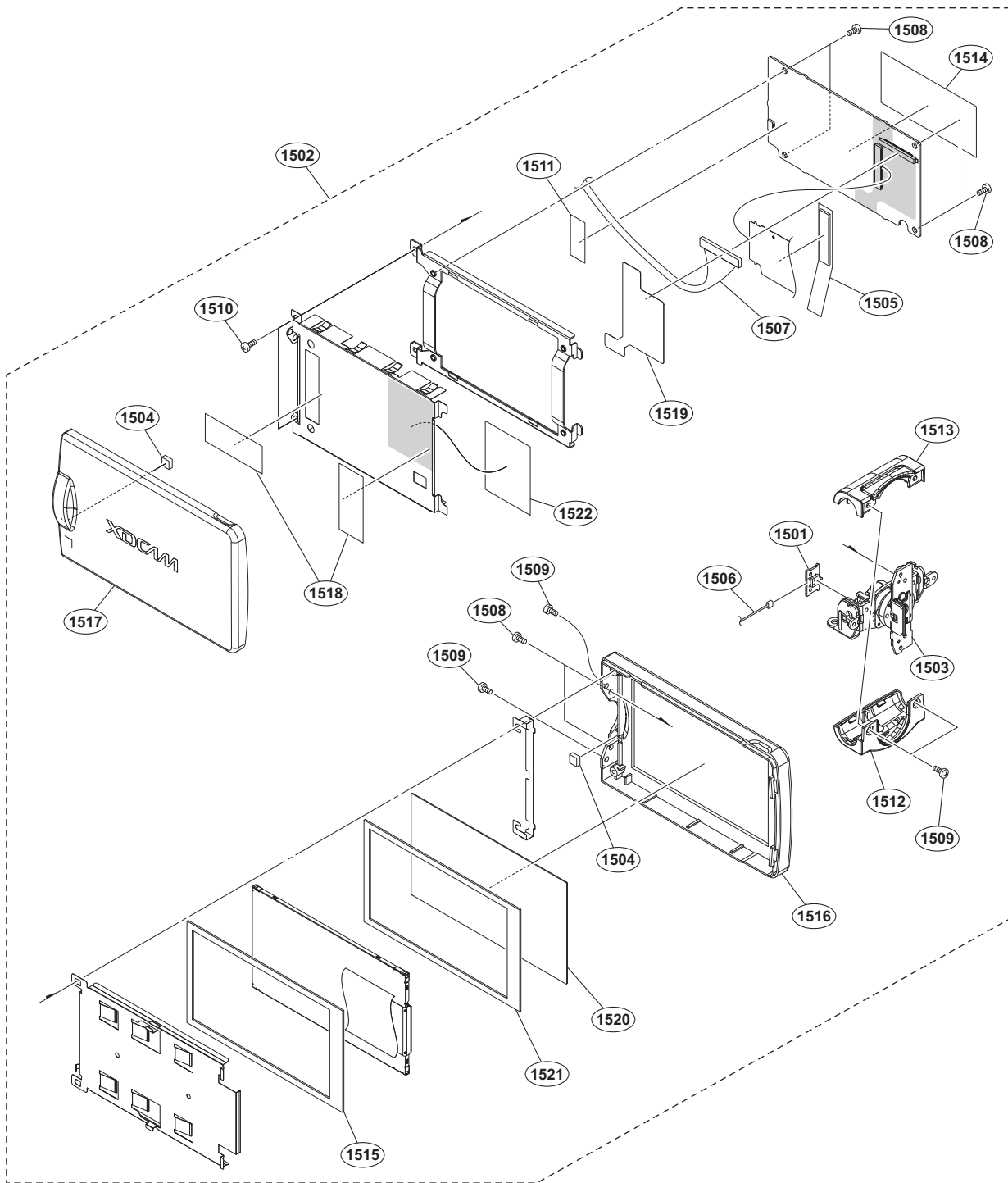
No.	Part No.	SP Description	No.	Part No.	SP Description
1301	A-2059-048-A	s MOUNTED CIRCUIT BOARD, GP-1019	1319	4-119-279-01	s HOLDER, FLEXIBLE
1302	A-2060-373-A	s MOUNTED CIRCUIT BOARD, KSW-66	1320	4-428-161-01	s COVER, HP JACK
1303	A-2060-379-A	s MOUNTED CIRCUIT BOARD, KSW-67	1321	4-549-880-01	s COVER, XLR
1304	A-2060-374-A	s MOUNTED CIRCUIT BOARD, RM-243	1322	4-567-069-01	s HYPERSHIELD FP-235
1305	A-2060-376-A	s MOUNTED CIRCUIT BOARD, RM-244			
1306	A-2065-825-A	s MOUNTED CIRCUIT BOARD, DR-670 (XH)			
1307	X-2188-609-1	s FIXED (759) ASSY			
1308	1-846-023-11	s CABLE, FLEXIBLE FLAT (10 CORE)			
1309	1-848-634-11	s FFC 8P (TYPEG)			
1310	1-894-037-13	s PWB, FP-235			
1311	1-968-343-11	s HARNESS (DCP-KSW)			
1312	1-970-561-11	s HARNESS (IF-RM-40P)			
1313	1-970-562-11	s HARNESS (KSW-IF-50P)			
1314	1-970-566-11	s SUB HARNESS (POWER_4P)			
1315	2-630-005-01	s SCREW (M2), NEW TRUSTER, P2 [P2X5]			
1316	2-635-562-31	s SCREW (M1.7) [P1.7X4]			
1317	3-056-233-21	s SCREW (M2), LOCK ACE, P2 [P2X4]			
1318	3-061-234-01	s NUT (M6X0.5)			

Handle-4

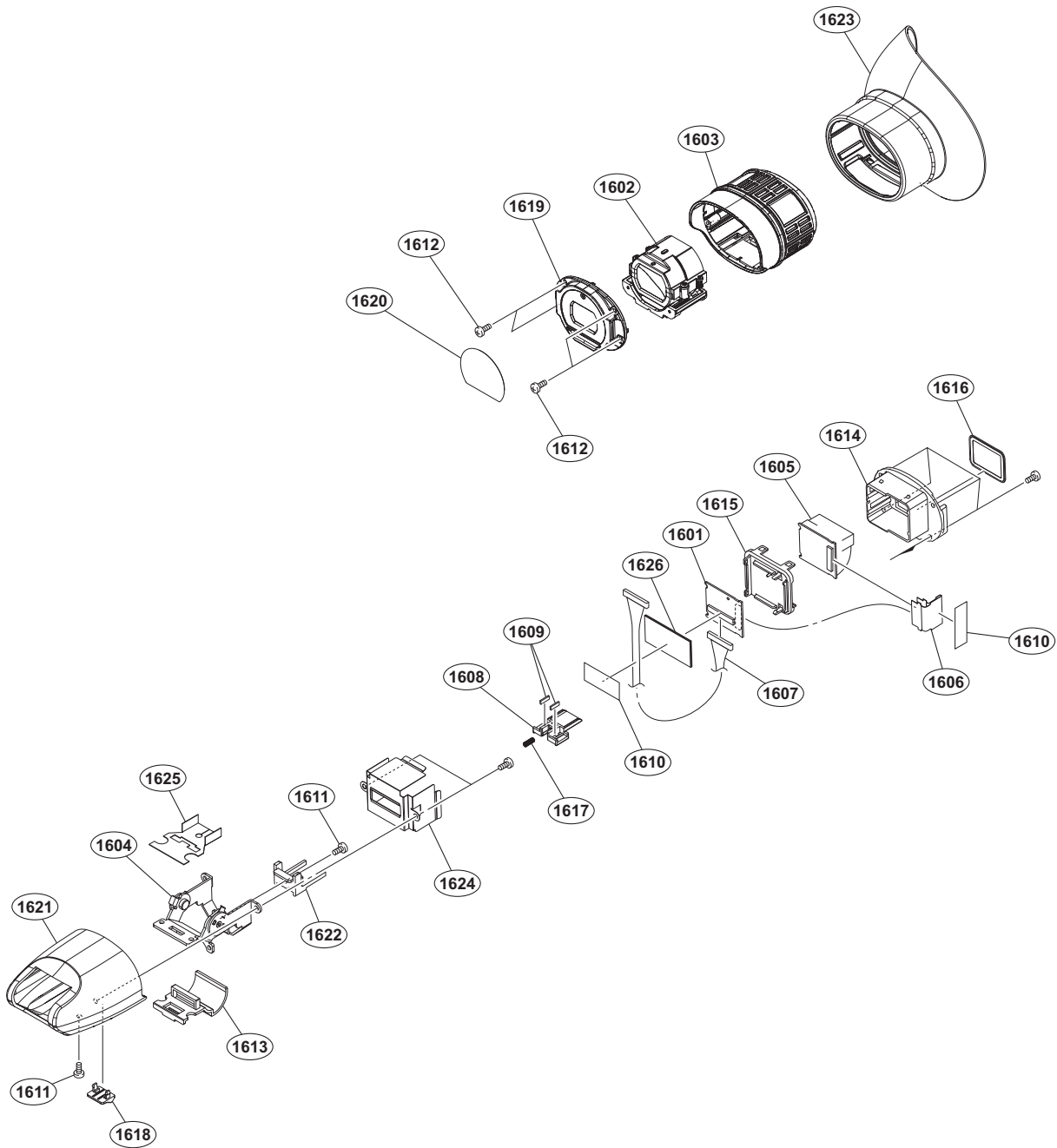


No.	Part No.	SP Description	No.	Part No.	SP Description
1401	A-2060-385-A	s MOUNTED CIRCUIT BOARD, AXM-53	1418	4-549-882-01	s HANDLE
1402	1-831-666-11	s CABLE, FLEXIBLE FLAT (15 CORE)			
1403	1-858-774-12	s LOUDSPEAKER (2.0 CM)			
1404	2-178-566-01	o GRILLE, SPEAKER		7-627-556-58	s SCREW +P 2.6X5
1405	2-630-005-01	s SCREW (M2), NEW TRUSTER, P2 [P2X5]		7-685-134-19	s SCREW +P 2.6X8 TYPE2 NON-SLIT
				7-688-002-02	s W 2.6, SMALL
1406	3-056-233-21	s SCREW (M2), LOCK ACE, P2 [P2X4]			
1407	3-080-206-21	s SCREW, TAPPING, P2 [TP2X5]			
1408	3-278-255-01	s TAPE (BT)			
1409	3-288-526-01	o RETAINER, SPEAKER			
1410	3-678-684-01	o HOLDER, CABLE			
1411	4-428-157-01	s GRIP			
1412	4-428-162-01	s SPEAKER HOLDER			
1413	4-428-163-04	s XLR SW KNOB			
1414	4-428-164-01	s XLR SW RALL			
1415	4-428-165-01	s PLATE LCD GROUND			
1416	4-428-166-01	s SCREEN, SPEAKER			
1417	4-549-878-01	s BRACKET, MICROPHONE			

LCD

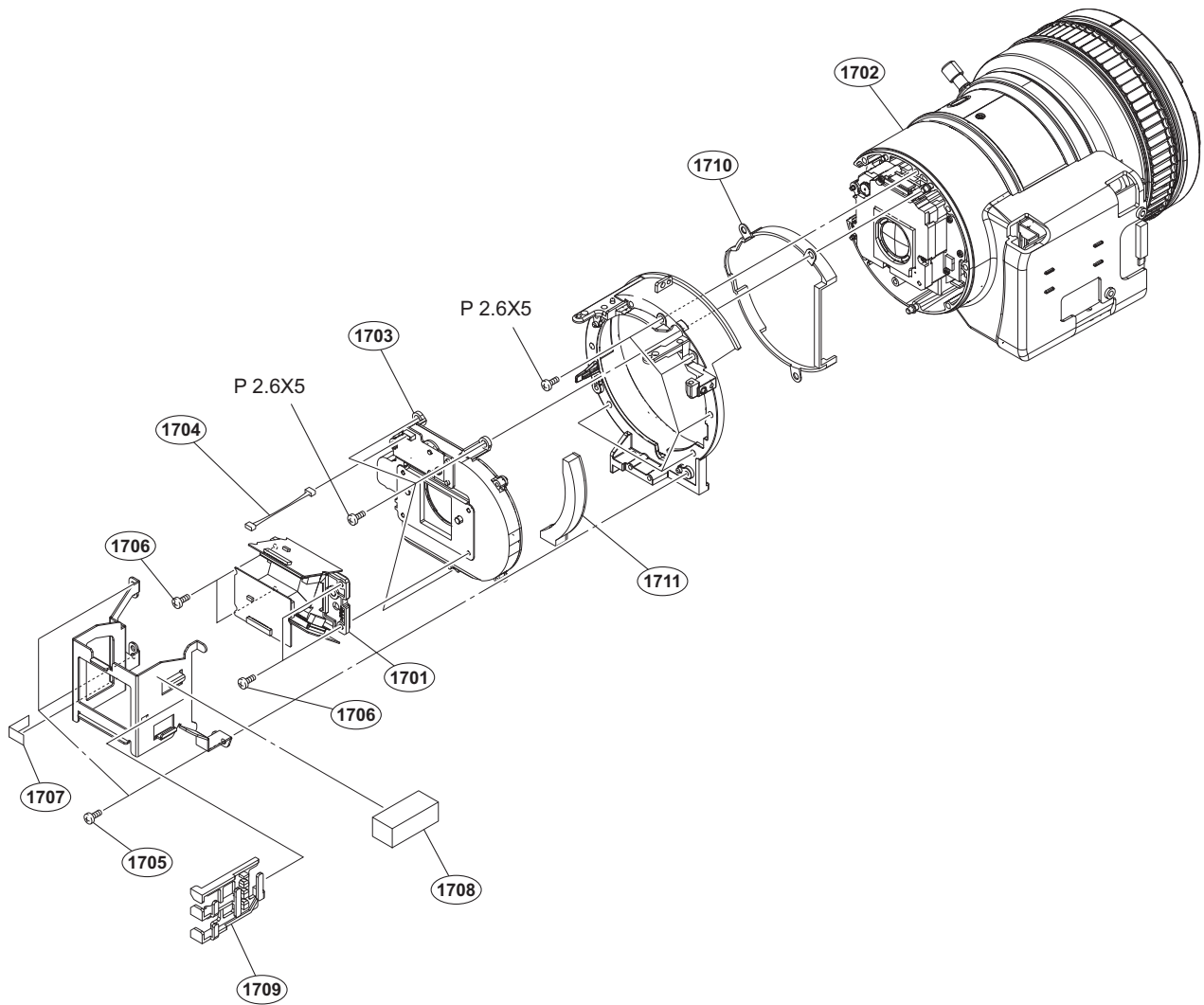


No.	Part No.	SP Description	No.	Part No.	SP Description
1501	A-2060-401-A	s MOUNTED CIRCUIT BOARD, DET-58	1513	3-288-567-21	s CABINET (B), PANEL HINGE
1502	A-2064-937-A	s LCD ASSY	1514	3-878-656-01	s TAPE 60
1503	X-2342-571-1	s HINGE (TYPE 07KAI) ASSY, PANEL	1515	4-428-128-01	s CUSHION, PANEL
1504	1-471-514-11	s MAGNET (LM-30FH)	1516	4-428-129-02	s BEZEL, LCD
1505	1-500-921-11	s FERRITE CORE	1517	4-428-130-02	s CABINET LCD
1506	1-968-339-11	s SUB HARNESS (REVERSE-KSW)	1518	4-435-868-01	s TAPE, LCD CONDUCTIVE
1507	1-970-559-11	s HARNESS (LCD-KSW66)	1519	4-460-687-01	s SHEET, HARNESS PROTECTION
1508	3-056-233-21	s SCREW (M2), LOCK ACE, P2 [P2X4]	1520	4-549-935-01	s WINDOW, LCD
1509	3-080-203-41	s SCREW (M2), LOCK ACE, P2 [P2X5]	1521	4-562-940-01	s CUSHION, PANEL XYT
1510	3-080-206-21	s SCREW, TAPPING, P2 [TP2X5]	1522	4-562-948-01	s HYPERSHIELD LCD
1511	3-278-255-01	s TAPE (BT)			
1512	3-288-566-21	s CABINET (T), PANEL HINGE			



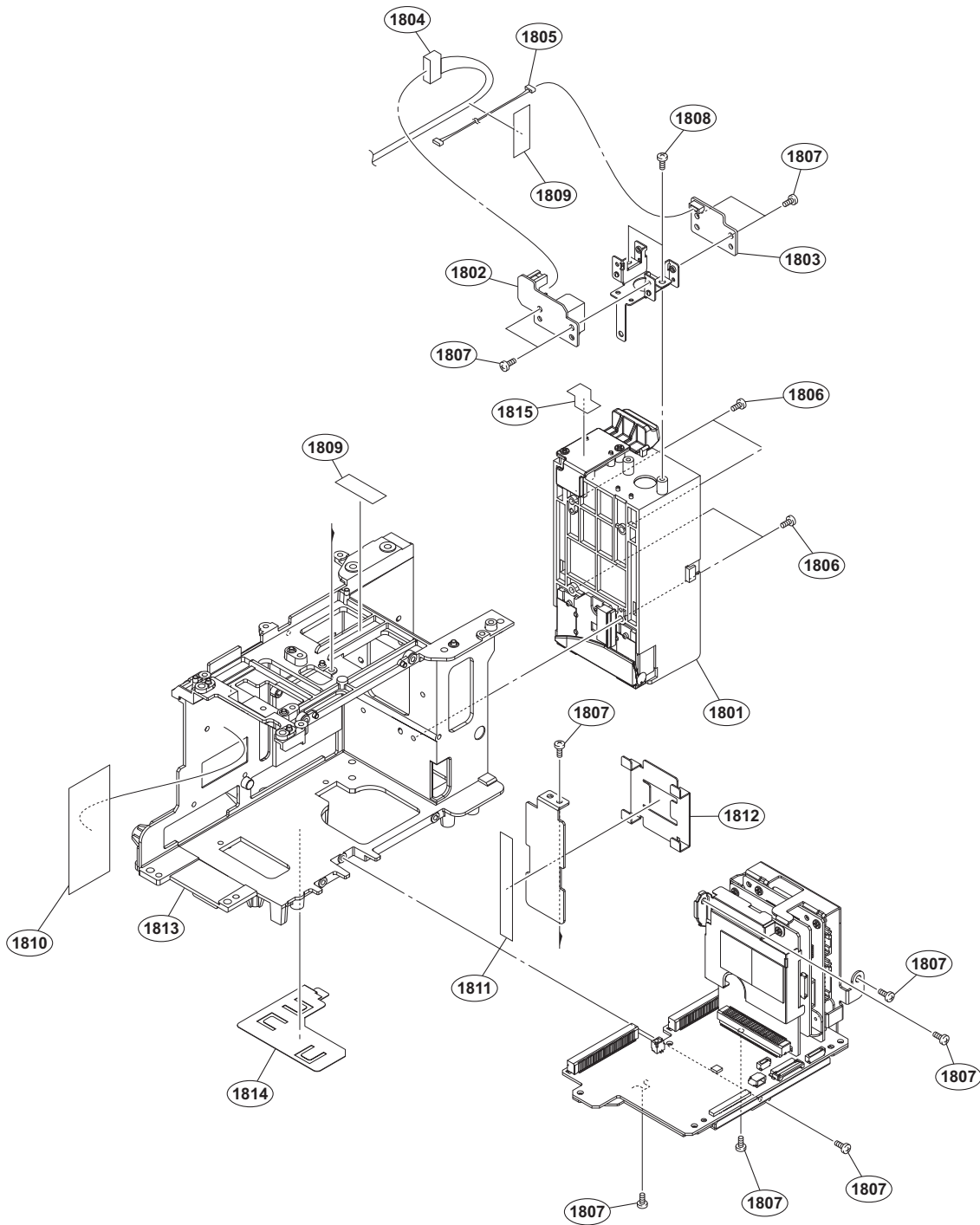
No.	Part No.	SP Description	No.	Part No.	SP Description
1601	A-2065-826-A	s MOUNTED CIRCUIT BOARD, HN-398 (XH)	1616	3-288-591-01	s SHEET, VF PROTECTION
1602	X-2320-861-2	s LENS ASSY, VF	1617	3-302-492-01	s SPRING, COMPRESSION
1603	X-2320-885-1	s EYE CUP (93000) ASSY	1618	3-963-822-12	s KNOB, LOCK
1604	X-2515-729-2	s HINGE ASSY	1619	4-119-302-01	s LID, EYE CUP CABINET
1605	1-811-033-12	s LCD MODULE	1620	4-119-303-01	s COVER, EYE CUP CABINET LID
1606	1-873-733-11	s PWB, FP-776 FLEXIBLE	1621	4-164-591-02	s CABINET EVF
1607	1-966-921-21	s HARNESS (COAXIAL CABLE)	1622	4-164-592-01	s GUIDE LOCK LEVER
1608	2-179-390-01	s HOOK, VF LOCK	1623	4-164-856-01	s EYE CUP
1609	3-060-588-01	s SPACER, LOCK	1624	4-445-605-01	s PLATE, EVF GROUND
1610	3-079-115-01	s TAPE AS	1625	4-445-606-02	s SHEET, EVF HARNESS
1611	3-080-203-31	s SCREW (M2), LOCK ACE, P2 [P2X4]	1626	4-549-936-01	s HYPERSHIELD EVF
1612	3-080-206-21	s SCREW, TAPPING, P2 [TP2X5]			
1613	3-278-317-02	s FPC GUIDE			
1614	3-288-585-01	s CASE, PANEL			
1615	3-288-586-01	s LID, PANEL			

Zoom Lens



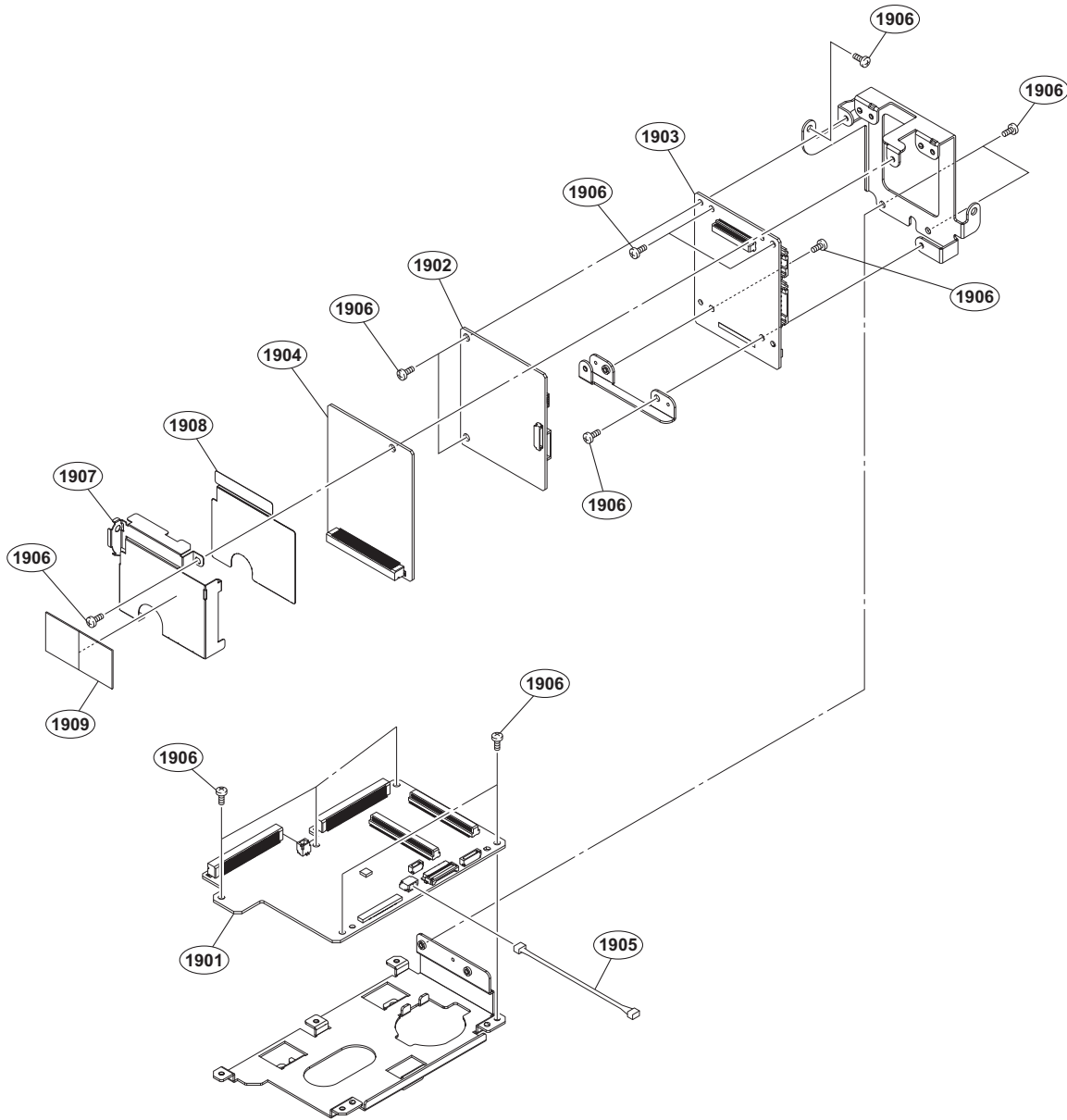
No.	Part No.	SP Description
1701	A-2068-824-A	s PRIZM BLOCK ASSY (RP)
1702	A-2068-825-A	s ZOOM LENS (RP)
1703	1-788-703-14	s ND FILTER, OPTICAL
1704	1-968-638-11	s SUB HARNESS (NDF-AU)
1705	3-056-233-21	s SCREW (M2), LOCK ACE, P2 [P2X4]
1706	3-080-206-21	s SCREW, TAPPING, P2 [TP2X5]
1707	3-278-255-01	s TAPE (BT)
1708	4-485-378-01	s GASKET (B), SOFT
1709	4-549-890-01	s CLAMP, HARNESS CHB
1710	4-549-891-01	s ND SPACER
1711	4-562-942-01	s CUSHION, FRONT
	7-627-556-58	s SCREW +P 2.6X5

Main Frame-1



No.	Part No.	SP Description	No.	Part No.	SP Description
1801	A-1881-601-C	s BATTERY CASE SUB ASSY	1813	4-549-863-01	s MAIN FRAME
1802	A-2060-380-A	s MOUNTED CIRCUIT BOARD, DC-173	1814	4-549-865-01	s SHEET, HARNESS AU
1803	A-2060-406-A	s MOUNTED CIRCUIT BOARD, PSW-106	1815	4-565-503-01	s SHEET (D), LIGHT INTERCEPTION
1804	1-968-344-21	s SUB HARNESS (EXT DC-RE299)			
1805	1-968-345-11	s SUB HARNESS (PSW-RE298)			
1806	2-630-005-01	s SCREW (M2), NEW TRUSTER, P2 [P2X5]			
1807	3-056-233-21	s SCREW (M2), LOCK ACE, P2 [P2X4]			
1808	3-080-206-21	s SCREW, TAPPING, P2 [TP2X5]			
1809	3-278-255-01	s TAPE (BT)			
1810	3-878-657-01	s TAPE 50			
1811	4-427-939-02	s CONDUCTIVE TAPE (EC)			
1812	4-427-947-01	s HOLDER EC HARNESS B			

Main Frame-2



No.	Part No.	SP Description
1901	A-2060-384-A	s MOUNTED CIRCUIT BOARD, AU-361
1902	A-2060-739-A	s MOUNTED CIRCUIT BOARD, RE-330
1903	A-2060-740-A	s MOUNTED CIRCUIT BOARD, RE-331
1904	A-2060-741-A	s MOUNTED CIRCUIT BOARD, RE-332
1905	1-970-572-11	s SUB HARNESS (AU361-IO263)
1906	3-056-233-21	s SCREW (M2), LOCK ACE, P2 [P2X4]
1907	4-465-265-02	s SHIELD PLATE,RE
1908	4-465-266-02	s INSULATING SHEET, RE
1909	4-487-107-01	s FFS SHEET