

SONY®

SOLID-STATE MEMORY CAMCORDER

PXW-Z280V

PXW-Z280T

XDCM™ **XAVC** **SXS** **N™**

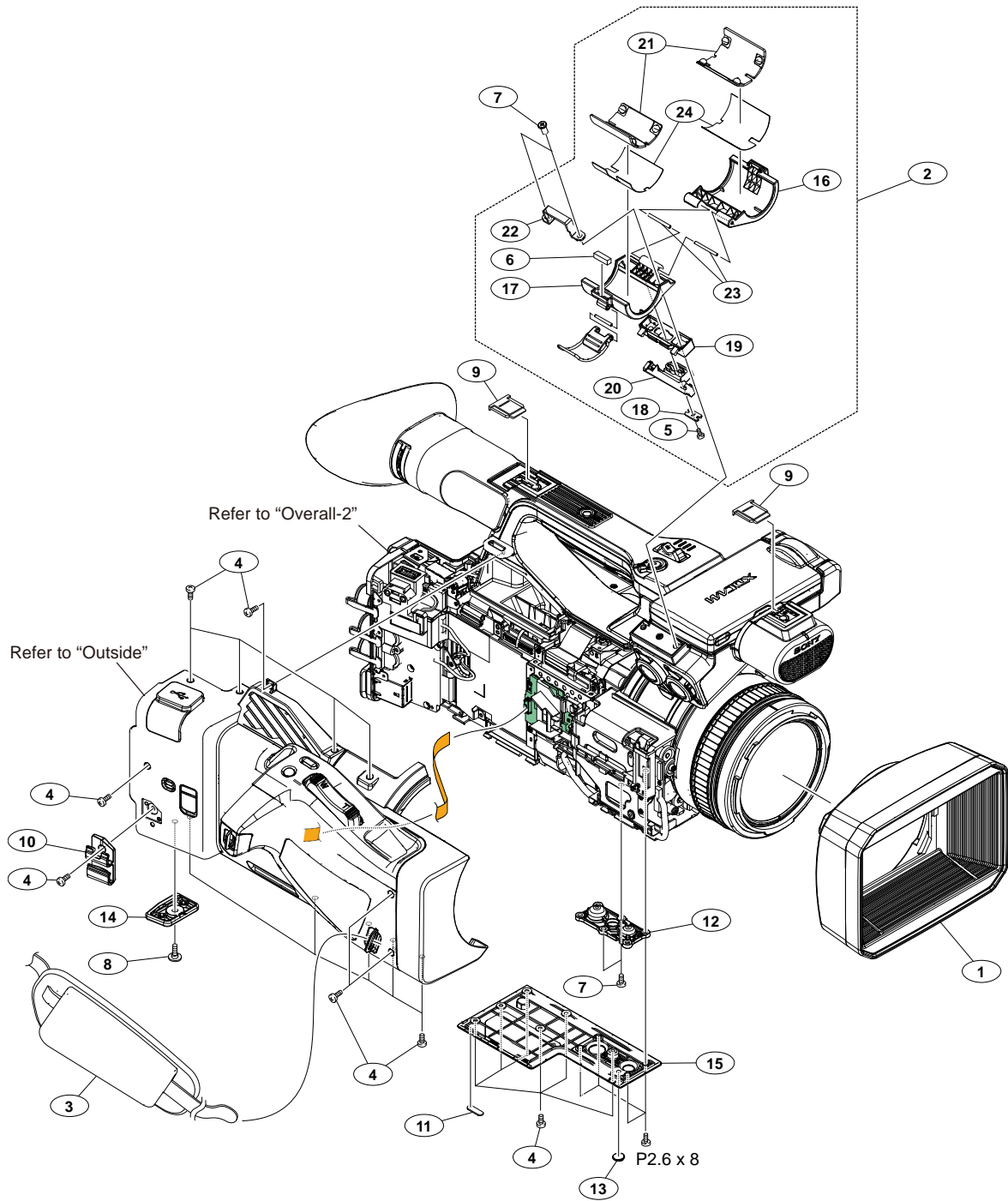
MPEG HD422 **HDMI™** **Exmor R**
HIGH DEFINITION MULTIMEDIA INTERFACE
CMOS Sensor

SERVICE MANUAL

1st Edition

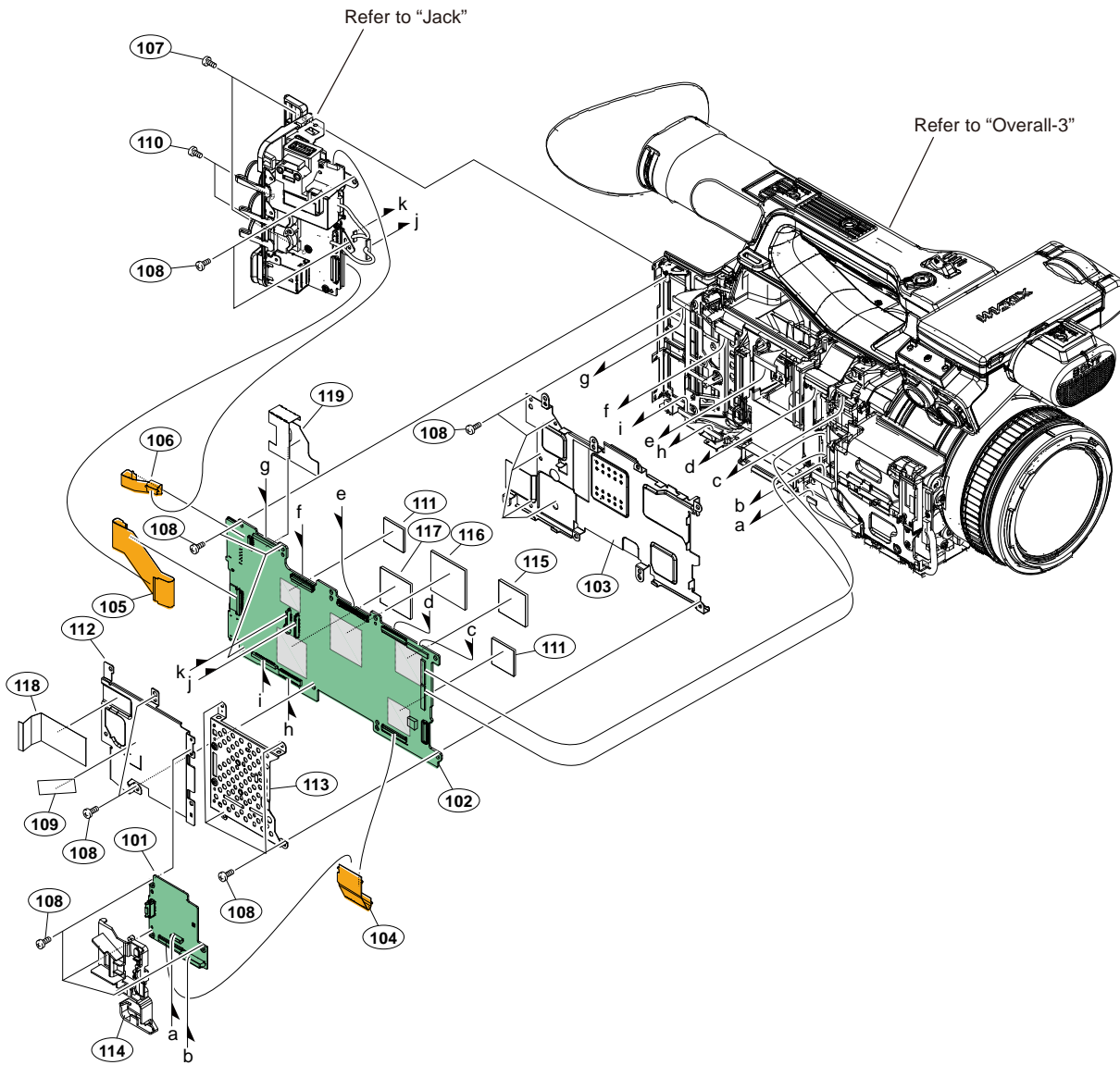
5-2. Exploded Views

Overall-1



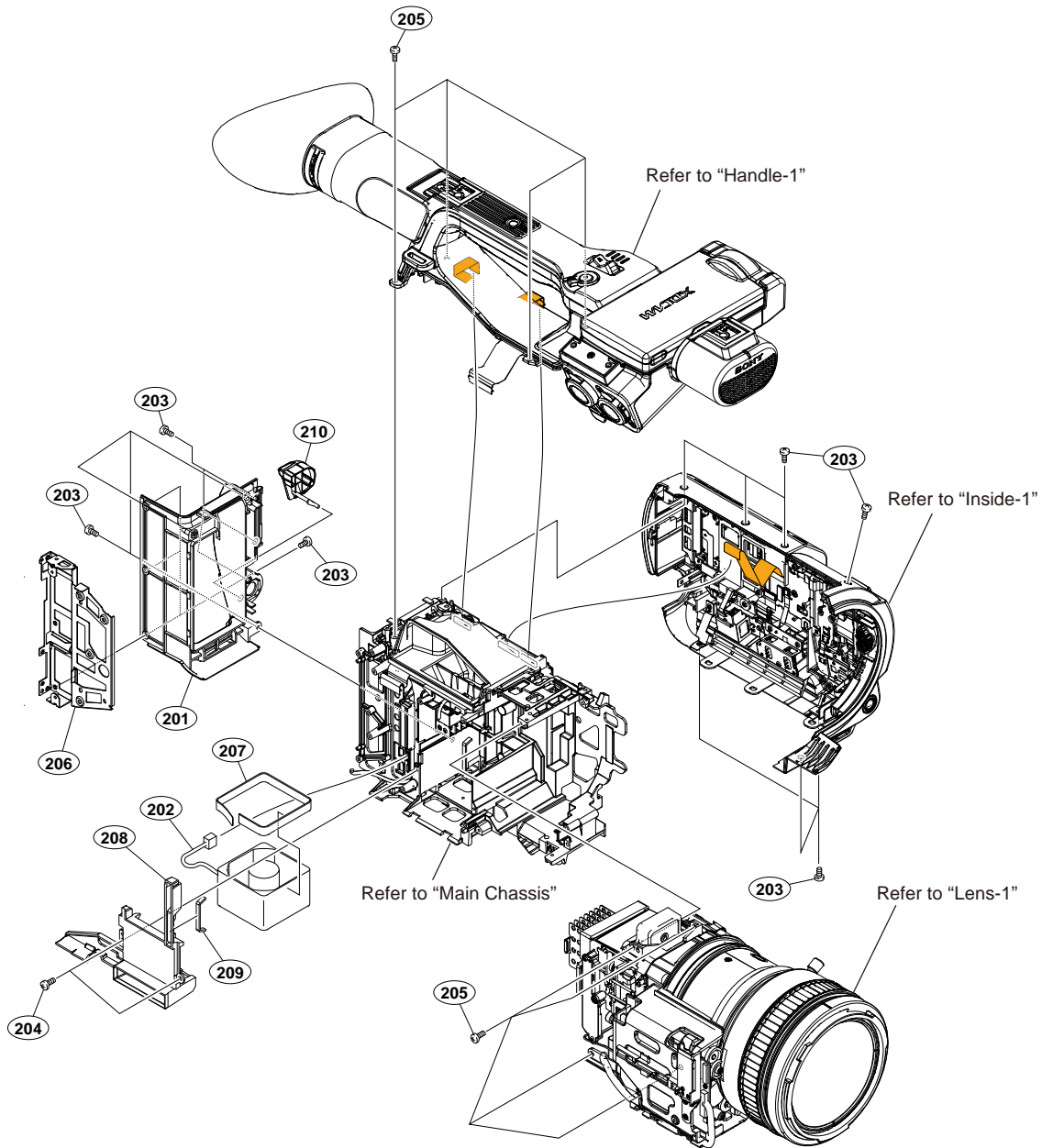
No.	Part No.	SPDescription
1	X-2596-732-1	s HOOD (973) ASSY
2	X-2596-733-1	s HOLDER (973) ASSY, MICROPHONE
3	2-178-804-02	s BELT, GRIP
4	2-630-005-31	s SCREW(M2),NEW TRUSTER,P2
5	3-080-206-21	s SCREW, TAPPING, P2
6	3-284-621-11	s CUSHION, MICROPHONE HOLDER
7	3-694-181-11	s TYPE1,AROCK PRECISION +P2.6X5
8	3-965-077-11	s SCREW, SPECIAL (M2)
9	4-438-734-12	s SHOE CAP (875)
10	4-488-856-01	o CLAMP, DC CABLE
11	4-540-533-01	s FOOT (941), RUBBER
12	4-576-418-21	s SCREW, TRIPOD
13	4-587-420-01	s LID, BM
14	4-737-145-01	s GUARD, OUT SIDE
15	4-737-160-01	s CABINET (BM)
16	4-740-435-01	s CABINET (UPPER (973)), HOLDER
17	4-740-436-01	s LOWER (973), HOLDER CABINET
18	4-740-437-01	s PLATE, MICROPHONE HOLDER
19	4-740-438-01	s BASE, MICROPHONE HOLDER
20	4-740-439-01	s INSULATOR, MICROPHONE HOLDER
21	4-740-440-01	s RUBBER (973), MICROPHONE
22	4-740-445-01	s RETAINER, MICROPHONE HOLDER
23	4-741-199-01	s SHAFT (973), MICROPHONE HOLDER
24	4-741-423-01	s SHEET (973), RUBBER ADHESIVE
	7-627-556-98	s SCREW,PRECISION +P 2.6X8 TYPE1

Overall-2



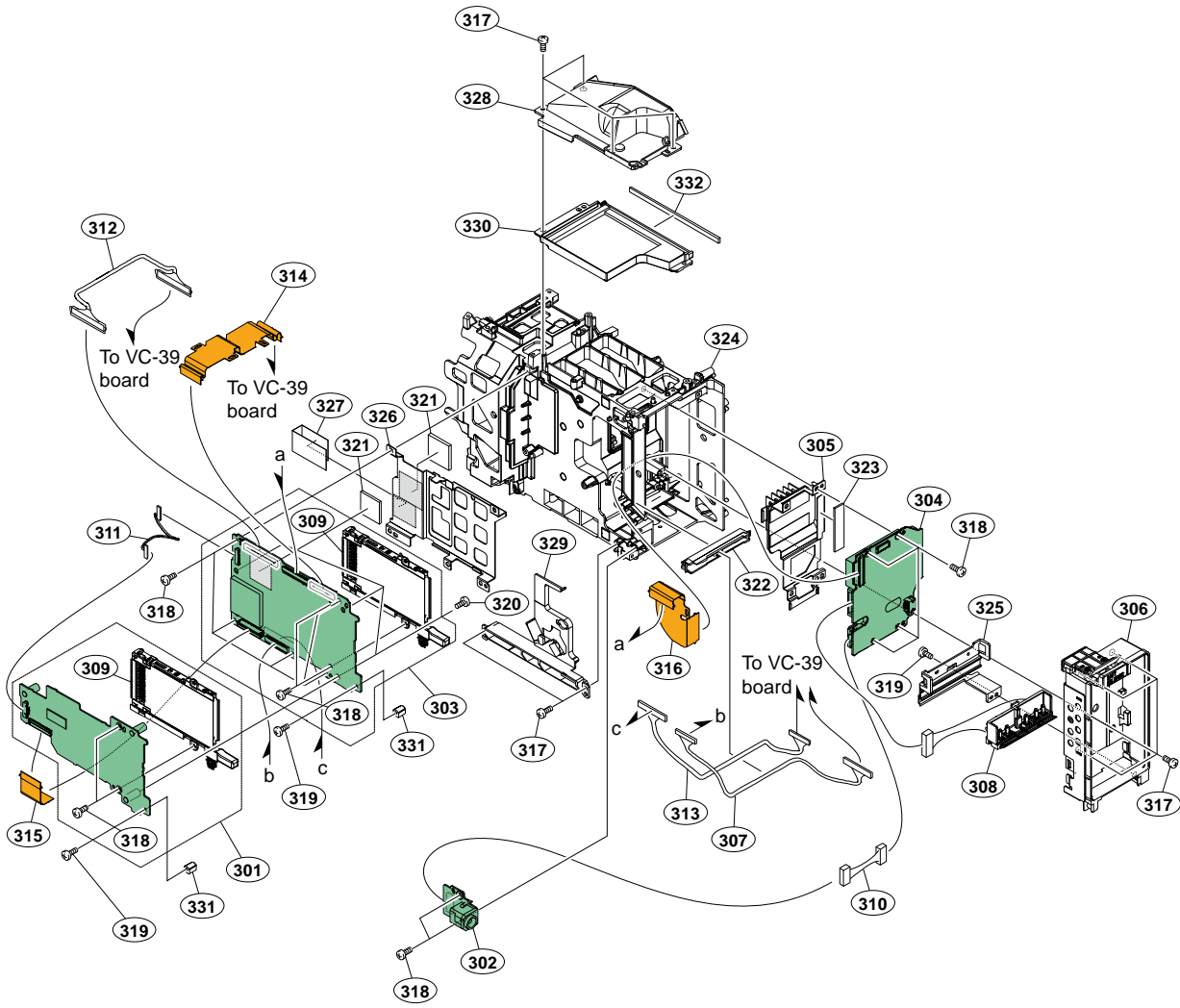
No.	Part No.	SPDescription
101	A-2225-399-A	s CT-287 COMPL
102	A-2225-401-A	s VC-39 COMPL
103	X-2596-728-1	s HEAT SINK ASSY, VC
104	1-983-027-11	s PWB, FP-273 FLEXIBLE
105	1-983-031-11	s PWB, FP-277 FLEXIBLE
106	1-983-033-11	s PWB, FP-279 FLEXIBLE
107	2-630-005-31	s SCREW(M2),NEW TRUSTER,P2
108	2-891-494-31	s SCREW(M2),NEW TRUSTER,P2
109	3-079-115-01	s TAPE AS
110	4-287-436-21	s SCREW (M1.7)
111	4-588-357-01	s SHEET (BT-1), RADIATION
112	4-737-122-01	s FRAME, VC SHIELD
113	4-737-124-01	s FRAME, CT
114	4-737-125-01	s INNER, CT
115	4-739-070-01	s SHEET (TG), VC RADIATION
116	4-739-071-01	s SHEET (RS), VC RADIATION
117	4-739-072-01	s SHEET (GM), VC RADIATION
118	4-739-078-01	s TAPE (VC), COPPER LEAF
119	4-741-103-01	s SHEET (VC), PROTECTION

Overall-3



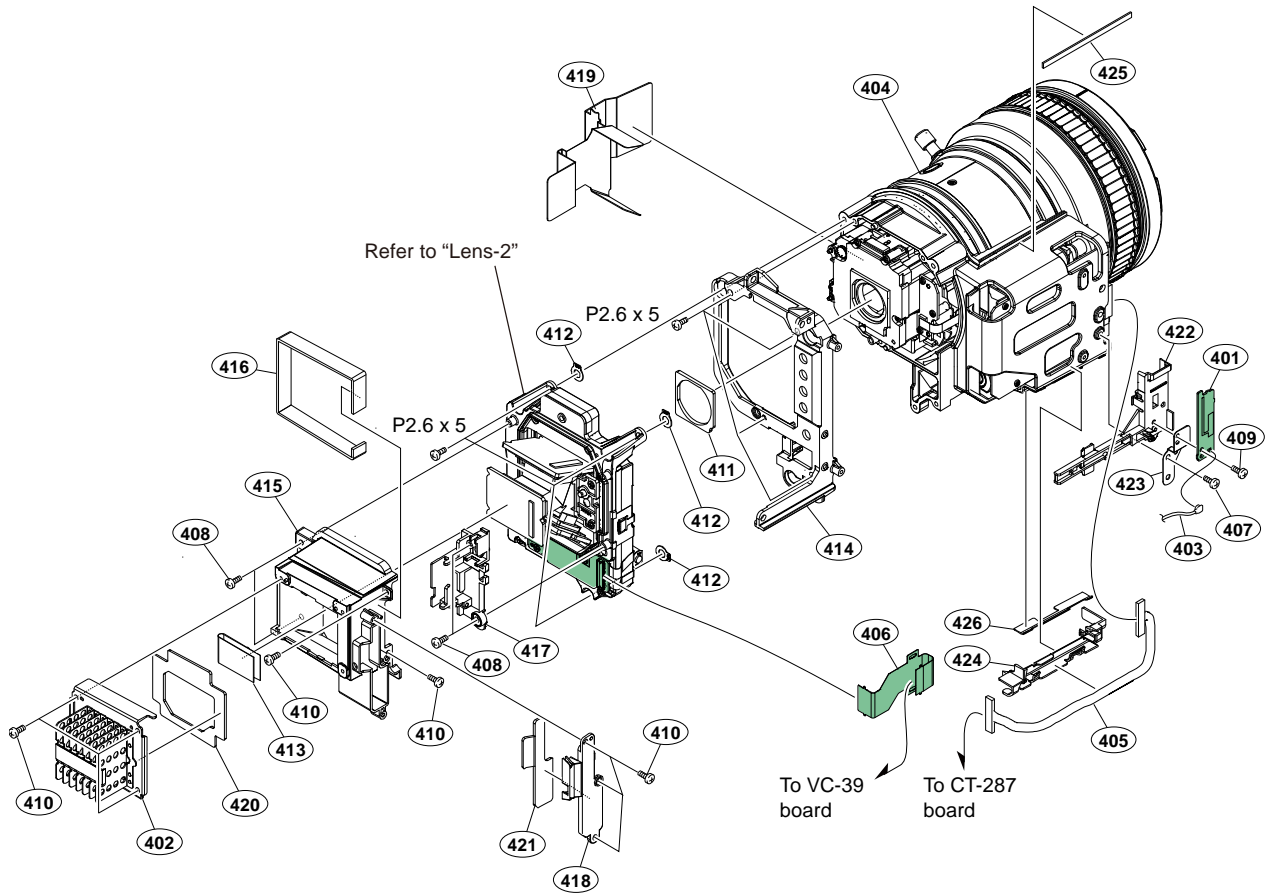
No.	Part No.	SPDescription
201	X-2596-721-1	s PANEL ASSY (973), BT
202	△ 1-855-374-11	s DC FAN
203	2-630-005-31	s SCREW(M2),NEW TRUSTER,P2
204	2-891-494-31	s SCREW(M2),NEW TRUSTER,P2
205	3-694-181-11	s TYPE1,AROCK PRECISION +P2.6X5
206	4-736-983-01	s FRAME, MAIN REAR
207	4-736-984-01	s CUSHION, FAN
208	4-736-985-01	s HOLDER, FAN
209	4-737-092-01	s CUSHION (DUCT) S, IM
210	4-737-098-01	s LID (973), DC

Main Chassis



No.	Part No.	SPDescription
301	A-2193-971-A	s EC-91 MOUNT
302	A-2193-977-A	s DC-184 MOUNT
303	A-2225-397-A	s AR-3 COMPL
304	A-2225-398-A	s DD-53 COMPL
305	X-2596-715-1	s HEAT SINK ASSY, DD
306	X-2596-716-1	s HOLDER ASSY, BT
307	1-969-036-11	s HARNESS (DPR-CMOS B)
308	△ 1-780-986-11	s TERMINAL BOARD, BATTERY
309	1-844-980-11	s CONNECTOR, EX CARD(GUIDE UNIT)
310	△ 1-970-362-11	s HARNESS (DD-1012)
311	1-970-568-11	s HARNESS(IO-DPR-10P)
312	1-972-386-11	s HARNESS (VC-AR-50P)
313	1-972-418-11	s HARNESS(VC-AR-40P)
314	1-983-029-11	s PWB, FP-275 FLEXIBLE
315	1-983-035-11	s PWB, FP-281 FLEXIBLE
316	1-983-036-11	s PWB, FP-282 FLEXIBLE
317	2-630-005-31	s SCREW(M2),NEW TRUSTER,P2
318	2-891-494-31	s SCREW(M2),NEW TRUSTER,P2
319	3-080-206-21	s SCREW, TAPPING, P2
320	3-694-181-11	s TYPE1,AROCK PRECISION +P2.6X5
321	4-588-357-01	s SHEET (BT-1), RADIATION
322	4-736-978-01	s CLAMP, DD
323	4-736-980-01	s SHEET, DD RADIATION
324	4-736-986-01	s CHASSIS, MAIN
325	4-736-991-01	s SUPPORT, TERMINAL
326	4-736-992-01	s HEAT SINK, AR
327	4-736-993-01	s SHEET, AR RADIATION
328	4-736-994-01	s COVER (UPPER), DUCT
329	4-736-995-01	s COVER (LOWER), DUCT
330	4-736-996-02	s GUIDE, DUCT COVER
331	4-736-997-01	s GUIDE, ME
332	4-737-177-01	s CUSHION, DUCT COVER

Lens-1



No.	Part No.	SPDescription
401	A-2225-112-A	s WF-1008 MOUNT
402	X-2596-727-1	s HEAT SINK ASSY, IM
403	1-846-474-31	s CABLE, COAXIAL (110MM)
404	1-856-669-31	s LENS, ZOOM
405	1-972-264-11	s SUB HARNESS (CT-LENS)
406	1-983-028-11	s PWB, FP-274 FLEXIBLE
407	2-630-005-31	s SCREW(M2),NEW TRUSTER,P2
408	2-891-494-31	s SCREW(M2),NEW TRUSTER,P2
409	3-080-204-21	s SCREW, TAPPING, P2
410	3-080-206-21	s SCREW, TAPPING, P2
411	4-731-281-01	s PACKING (A), DUST PROTECTION
412	Selection	s SHIM (4000)
	Parts	
413	4-736-993-01	s SHEET, AR RADIATION
414	4-737-100-01	s CHASSIS, LENS
415	4-737-101-01	s COVER (973), IM
416	4-737-103-01	s CUSHION, IM COVER
417	4-737-104-01	s CLAMP (973), IM
418	4-737-106-01	s LID, IM COVER
419	4-737-109-01	s SHEET (973), IM RADIATION
420	4-737-111-01	s CUSHION (FIN), IM
421	4-737-112-01	s CUSHION (DUCT), IM
422	4-737-113-01	s HOLDER, WIFI
423	4-737-114-01	s SHEET METAL, WIFI GND
424	4-737-117-01	s GUIDE, LENS HARNESS
425	4-737-118-01	s CUSHION (973), LENS
426	4-741-421-01	s SPACER (LE) (973)
	7-627-556-58	s SCREW +P 2.6X5

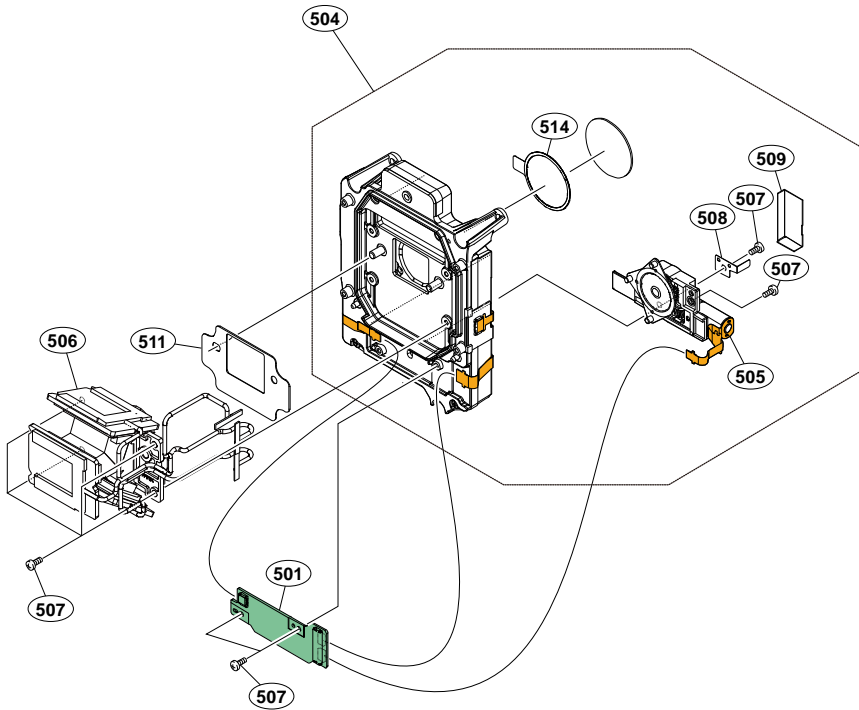
Selection Parts

Ref. No.412

Select the optimum thickness of shim.

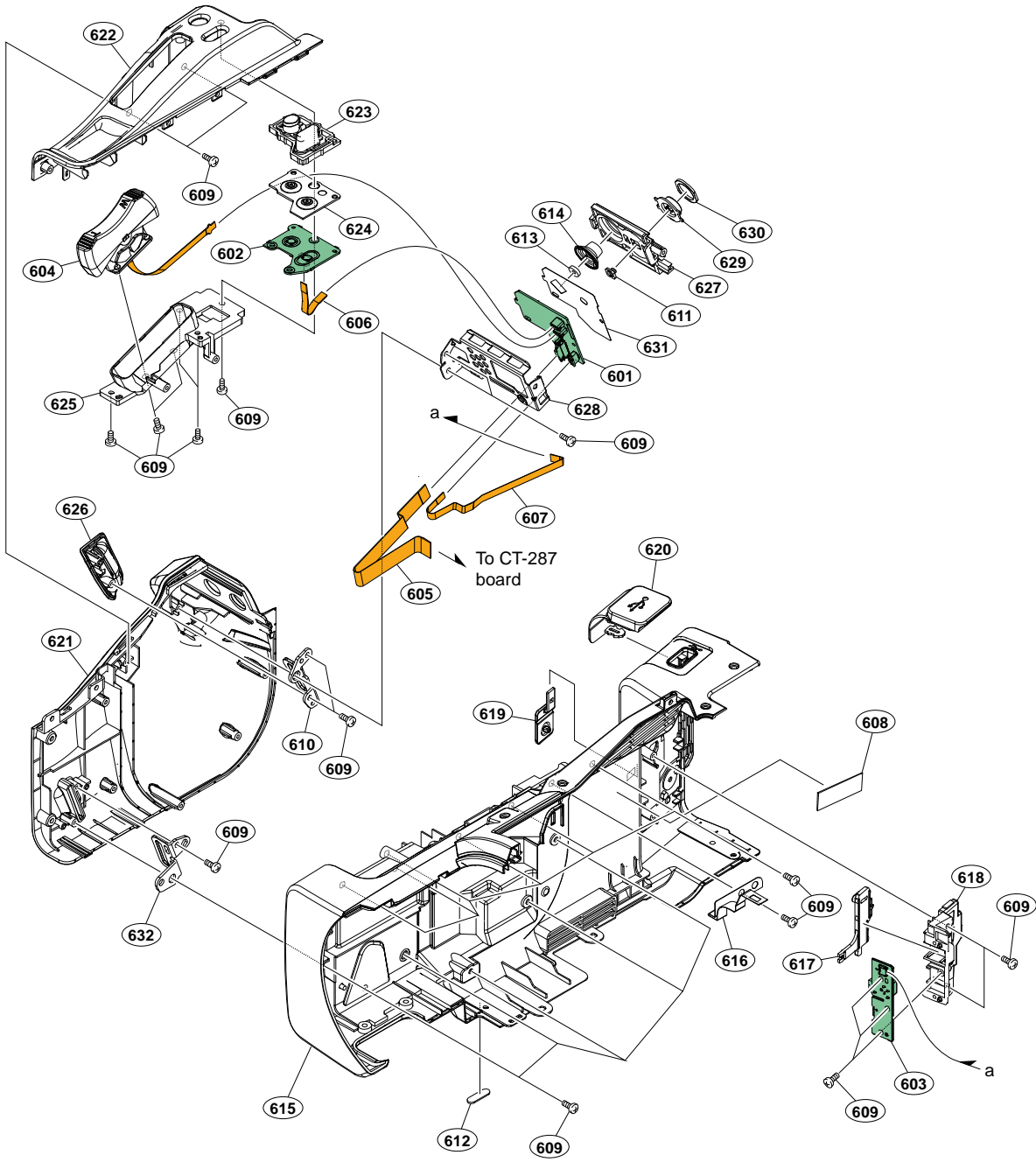
No.	Part No.	SPDescription
412	4-731-274-01	s SHIM (4000) [t=0.20 ±0.005mm]
412	4-731-274-11	s SHIM (4000) [t=0.22 ±0.005mm]
412	4-731-274-21	s SHIM (4000) [t=0.24 ±0.005mm]
412	4-731-274-31	s SHIM (4000) [t=0.26 ±0.005mm]
412	4-731-274-41	s SHIM (4000) [t=0.28 ±0.005mm]
412	4-731-274-51	s SHIM (4000) [t=0.30 ±0.005mm]
412	4-731-274-61	s SHIM (4000) [t=0.32 ±0.005mm]
412	4-731-274-71	s SHIM (4000) [t=0.34 ±0.005mm]
412	4-731-274-81	s SHIM (4000) [t=0.36 ±0.005mm]
412	4-731-274-91	s SHIM (4000) [t=0.38 ±0.005mm]
412	4-734-286-01	s SHIM (4000) [t=0.40 ±0.005mm]
412	4-734-286-11	s SHIM (4000) [t=0.42 ±0.005mm]
412	4-734-286-21	s SHIM (4000) [t=0.44 ±0.005mm]
412	4-734-286-31	s SHIM (4000) [t=0.46 ±0.005mm]
412	4-734-286-41	s SHIM (4000) [t=0.48 ±0.005mm]
412	4-734-286-51	s SHIM (4000) [t=0.50 ±0.005mm]
412	4-734-286-61	s SHIM (4000) [t=0.52 ±0.005mm]
412	4-734-286-71	s SHIM (4000) [t=0.54 ±0.005mm]
412	4-743-105-01	s SHIM (4000) [t=0.06 ±0.005mm]
412	4-743-105-11	s SHIM (4000) [t=0.08 ±0.005mm]
412	4-743-105-21	s SHIM (4000) [t=0.10 ±0.005mm]
412	4-743-105-31	s SHIM (4000) [t=0.12 ±0.005mm]
412	4-743-105-41	s SHIM (4000) [t=0.14 ±0.005mm]
412	4-743-105-51	s SHIM (4000) [t=0.16 ±0.005mm]
412	4-743-105-61	s SHIM (4000) [t=0.18 ±0.005mm]

Lens-2



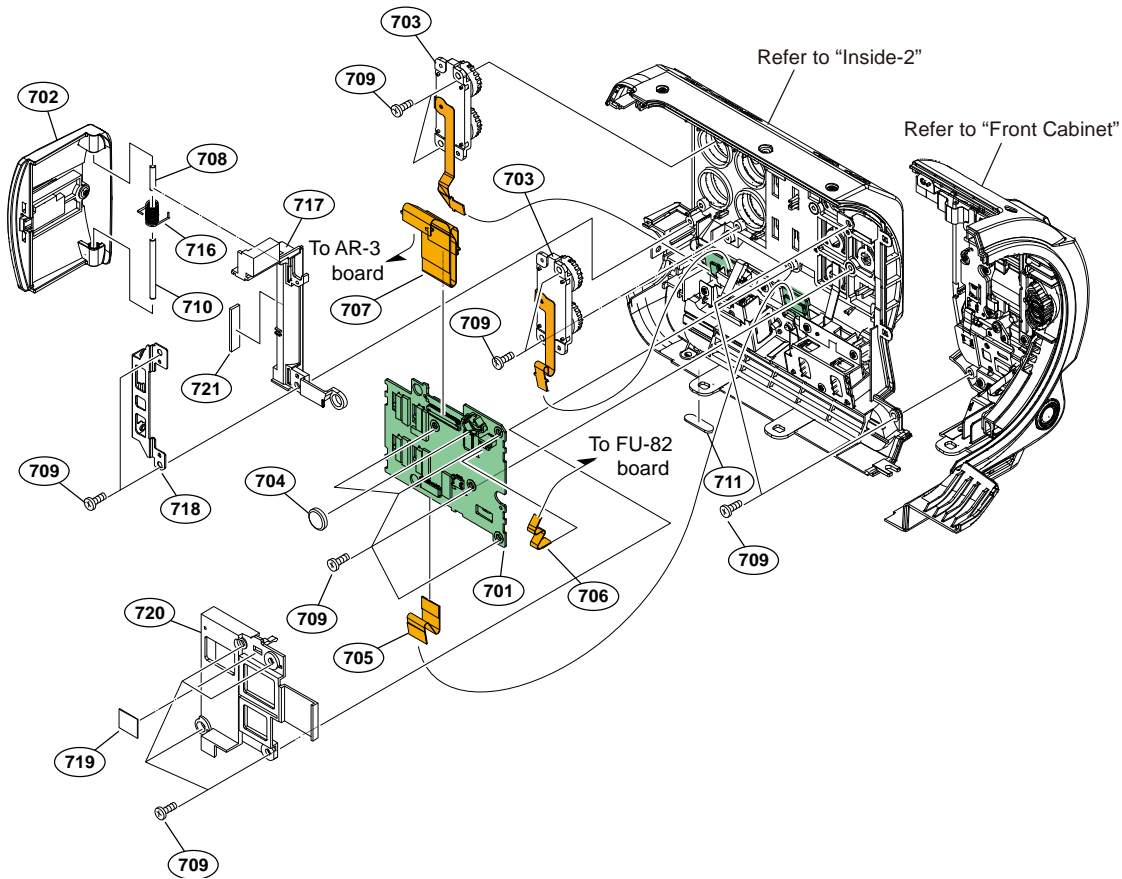
No.	Part No.	SPDescription
501	A-2193-974-A	s CR-52 MOUNT
504	A-2197-559-A	s FIX-4000
505	A-2197-572-A	s ND MOTOR UNIT BLOCK ASSY 4000
506	A-2225-428-A	s LSV-1940A(RP)
507	2-891-494-31	s SCREW(M2),NEW TRUSTER,P2
508	4-574-970-01	s PLATE, ND GEAR (C) RETAINER
509	4-582-338-02	s GEAR BOX TAPE
511	4-731-273-01	s PACKING (B), DUST PROTECTION
514	4-731-279-01	s TAPE, COVER GLASS

Outside



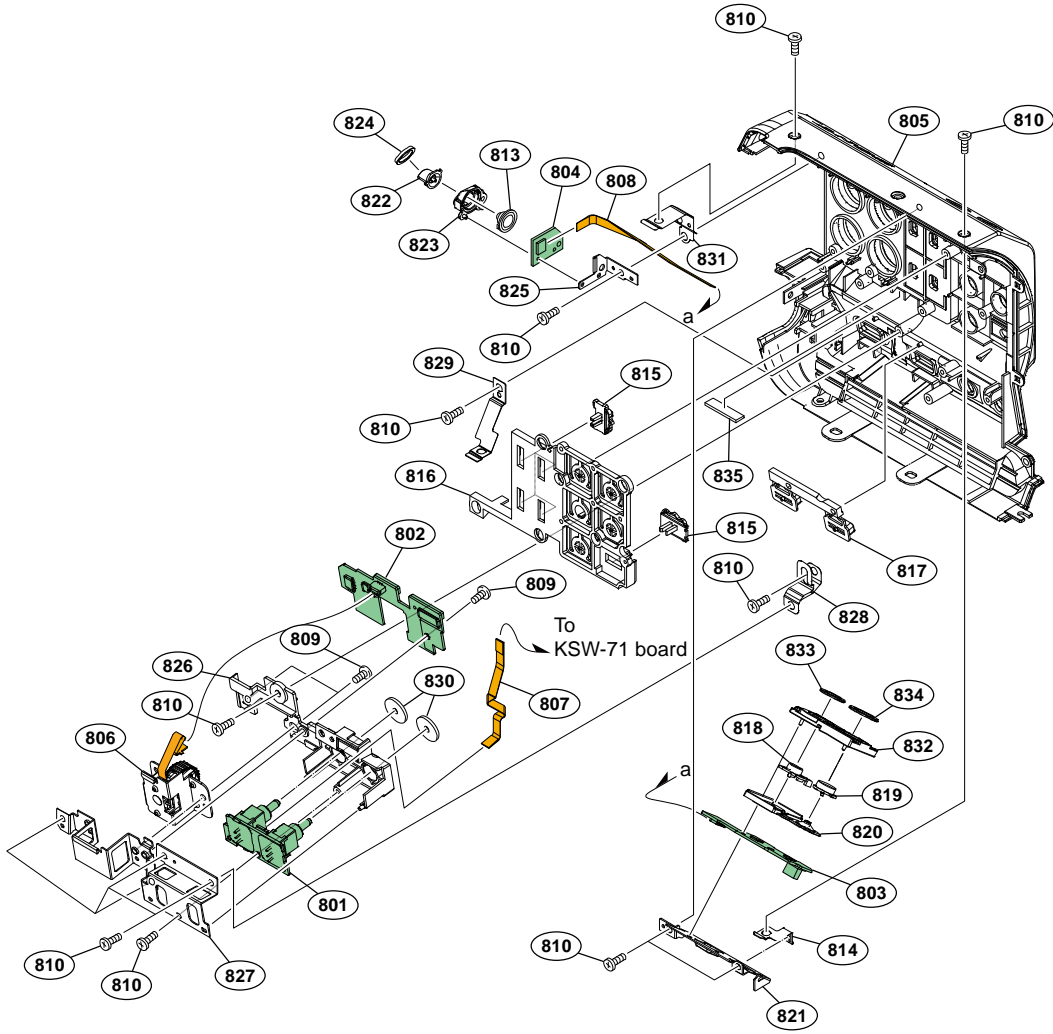
No.	Part No.	SPDescription
601	A-2193-988-A	s SS-107 MOUNT
602	A-2194-011-A	s SW-1735 MOUNT
603	A-2194-012-A	s TC-117 MOUNT
604	1-493-502-11	s SWITCH BLOCK CONTROL(PZ97300)
605	1-912-724-11	s CABLE, FLEXIBLE FLAT (16 CORE)
606	1-912-725-11	s CABLE, FLEXIBLE FLAT (6 CORE)
607	1-912-732-11	s CABLE, FLEXIBLE FLAT (6 CORE)
608	3-079-115-01	s TAPE AS
609	3-080-206-21	s SCREW, TAPPING, P2
610	4-165-331-01	s BRACKET (REAR), GRIP BELT
611	4-299-985-11	s RUBBER, SS
612	4-540-533-01	s FOOT (941), RUBBER
613	4-541-676-21	s SHEET (G), MUFFLE
614	4-544-480-01	s JOYSTICK
615	4-737-140-01	s CABINET (973), OUT SIDE
616	4-737-142-01	s TAPE (OUT SIDE), GND
617	4-737-143-01	s LEVER, TC SELECT
618	4-737-144-01	s HOLDER, TC SELECT LEVER
619	4-737-146-01	s LID, REMOTE
620	4-737-147-01	s LID (TOP), USB
621	4-737-148-01	s CABINET, GRIP
622	4-737-149-01	s CABINET, GRIP (UPPER)
623	4-737-150-01	s BUTTON (GRIP), ASSIGN
624	4-737-151-01	s PACKING (ASSIGN)
625	4-737-152-01	s CASE, ZOOM
626	4-737-153-01	s COVER, GRIP BELT
627	4-737-154-01	s BASE, SS
628	4-737-155-01	s FRAME, SS
629	4-737-156-01	s BUTTON, REC
630	4-737-157-01	s CUSHION (SS)
631	4-737-158-01	s SHEET (SS)
632	4-737-159-01	s BRACKET (FRONT), GRIP BELT

Inside-1



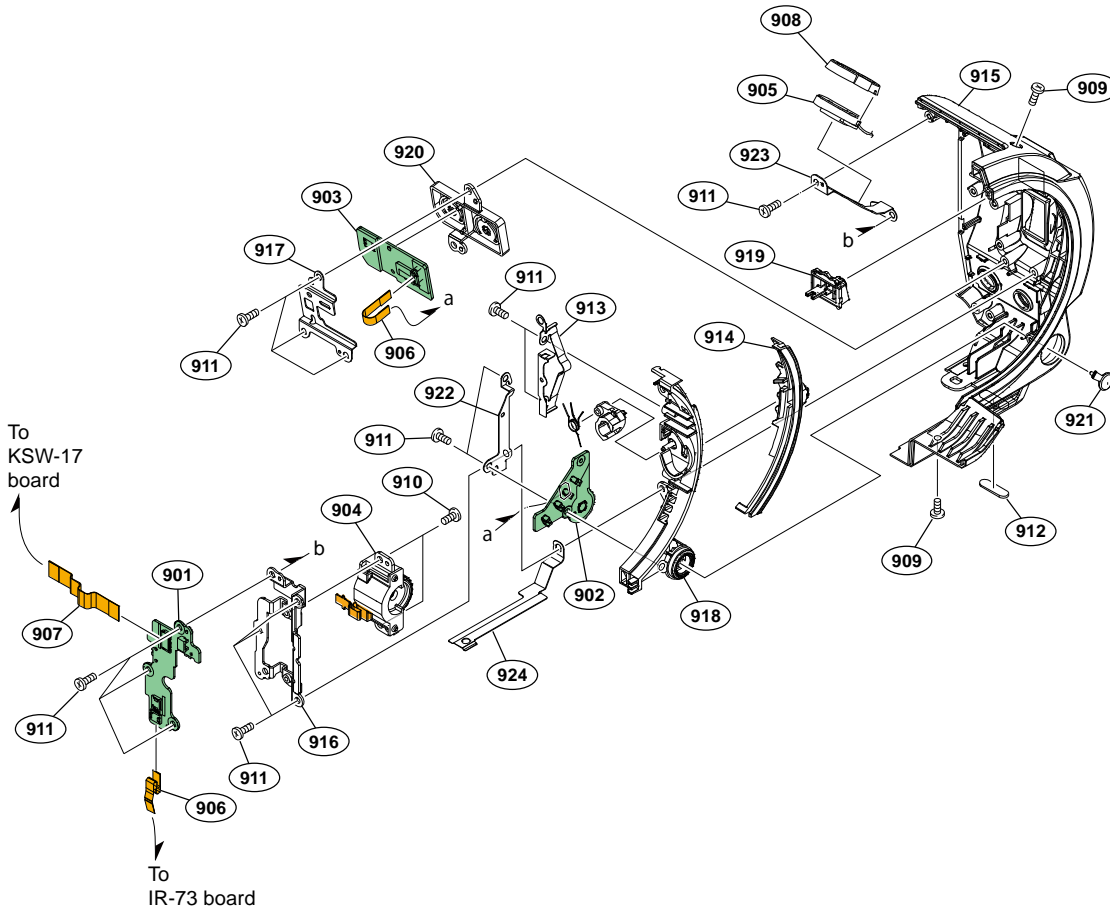
No.	Part No.	SPDescription
701	A-2193-986-A	s KSW-71 MOUNT
702	X-2596-725-1	s LID ASSY (973), ME
703	1-493-503-11	s SWITCH BLOCK CONTROL(AU97300)
704	△ 1-756-134-18	s BATTERY, LITHIUM (SECONDARY)
705	1-912-729-11	s CABLE, FLEXIBLE FLAT (16 CORE)
706	1-912-734-11	s CABLE, FLEXIBLE FLAT (6 CORE)
707	1-983-038-11	s PWB, FP-284 FLEXIBLE
708	2-249-361-01	s PIN, PARALLEL
709	3-080-206-21	s SCREW, TAPPING, P2
710	3-703-358-09	s PIN, PARALLEL (DIA. 2X25)
711	4-540-533-01	s FOOT (941), RUBBER
716	4-737-074-01	s SPRING, COVER
717	4-737-075-01	s RETAINER (973), ME SHAFT
718	4-737-077-01	s PLATE, REAR FIXED
719	4-737-081-01	s SHEET (AU)
720	4-737-093-01	s CLAW, AU LID LOCK
721	4-737-180-01	s CUSHION, ME LID

Inside-2



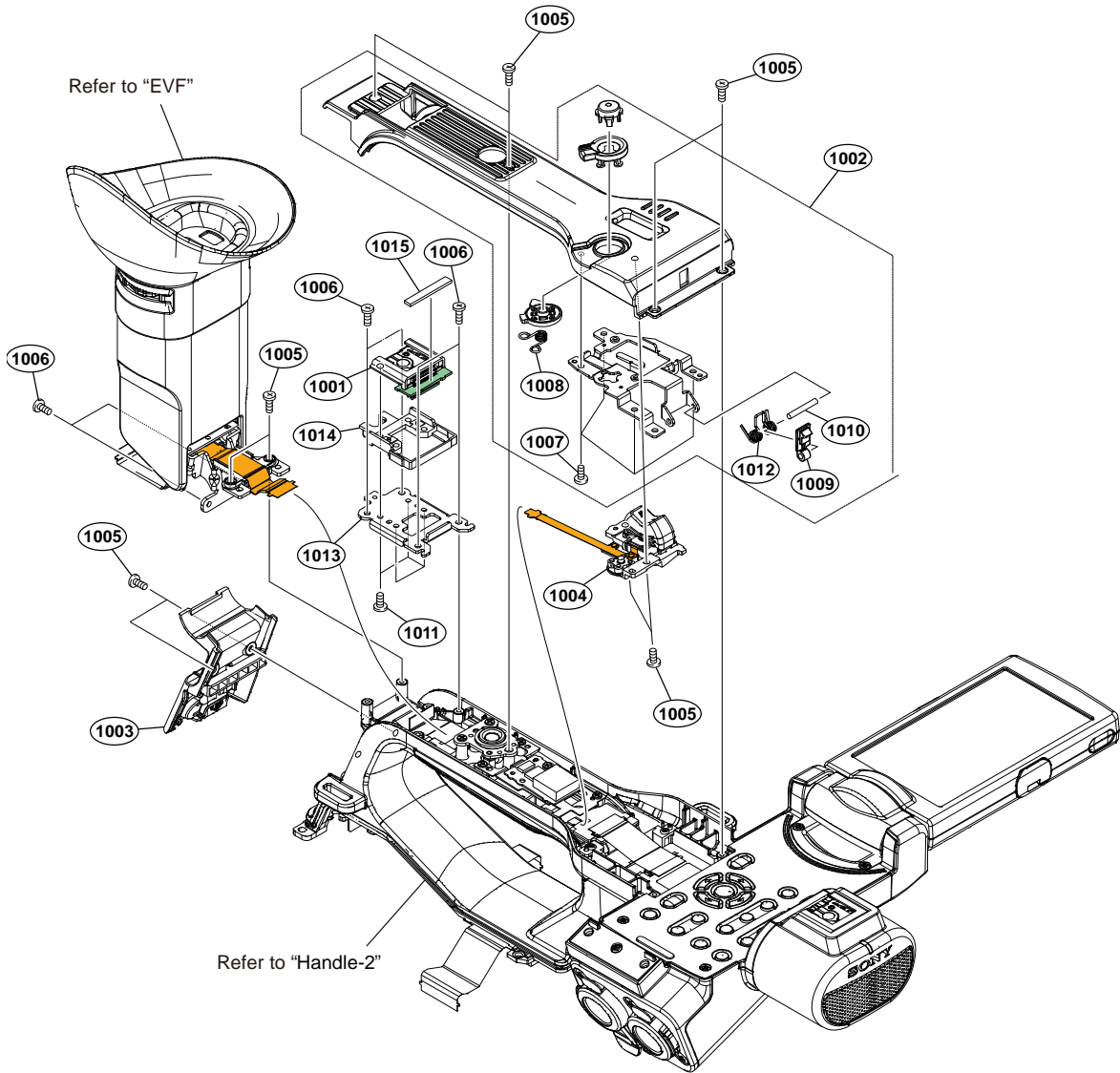
No.	Part No.	SPDescription
801	A-2194-006-A	s TG-289 MOUNT
802	A-2194-010-A	s MEC-43 MOUNT
803	A-2201-099-A	s FU-82 MOUNT
804	A-2201-100-A	s SEC-58 MOUNT
805	X-2596-723-1	s CABINET ASSY (973), IN SIDE
806	1-492-342-11	s SWITCH BLOCK, CONTROL(KP40400)
807	1-912-730-11	s CABLE, FLEXIBLE FLAT (6 CORE)
808	1-912-733-11	s CABLE, FLEXIBLE FLAT (6 CORE)
809	2-891-494-31	s SCREW(M2),NEW TRUSTER,P2
810	3-080-206-21	s SCREW, TAPPING, P2
813	4-737-066-01	s PACKING (SE)
814	4-737-073-01	s TAPE (FU), GND
815	4-737-079-01	s SELECTION, SHUTTER
816	4-737-080-01	s BUTTON (IN SIDE), ASSIGN
817	4-737-082-01	s BUTTON, MENU-CANCEL
818	4-737-084-01	s BUTTON, FULL AUTO
819	4-737-085-01	s BUTTON (IN SIDE TOP), ASSIGN
820	4-737-086-01	s PACKING (FU)
821	4-737-087-01	s FRAME, FU
822	4-737-088-01	s BUTTON, SLOT/SELECT
823	4-737-089-01	s HOLDER, SLOT/SELECT BUTTON
824	4-737-090-01	s CUSHION (SE)
825	4-737-091-01	s FRAME, SE
826	4-737-094-01	s HOLDER, TG
827	4-737-095-01	s FRAME, TG
828	4-737-096-01	s TAPE (IN SIDE FRONT), GND
829	4-737-097-01	s TAPE (INSIDE REAR), GND
830	4-737-099-01	s CUSHION (TG)
831	4-737-139-01	s TAPE (SE) (973), GND
832	4-737-174-01	s HOLDER, FULL AUTO BUTTON
833	4-737-178-01	s CUSHION (FU)
834	4-737-179-01	s CUSHION (AS)
835	4-741-338-01	s CUSHION (973), AU LID

Front Cabinet



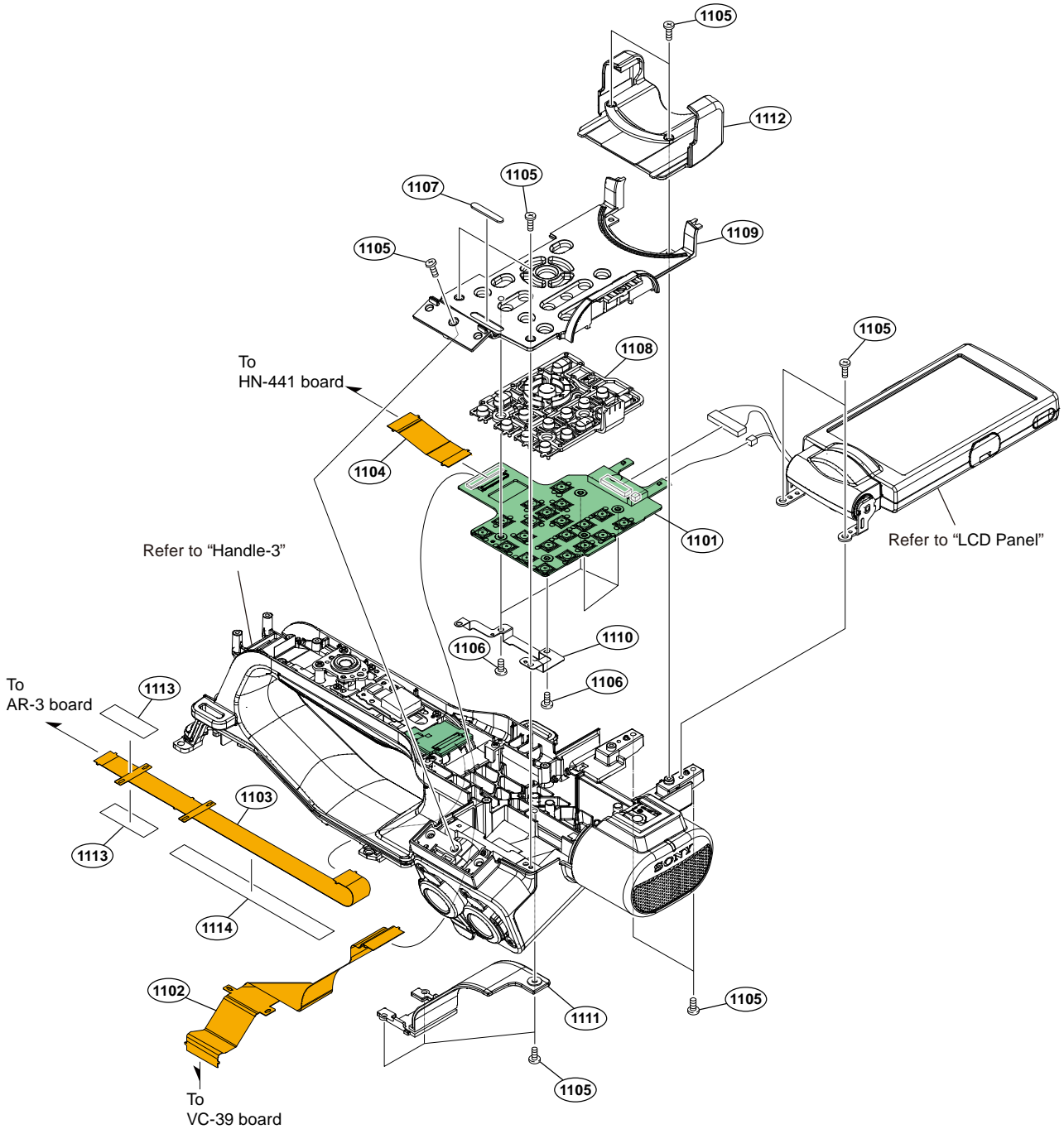
No.	Part No.	SPDescription
901	A-2194-007-A	s VSW-81 MOUNT
902	A-2194-008-A	s GCN-19 MOUNT
903	A-2194-009-A	s IR-73 MOUNT
904	1-492-897-11	s SWITCH BLOCK CONTROL (ID94100)
905	1-858-706-23	s LOUDSPEAKER (1.8CM)
906	1-912-725-11	s CABLE, FLEXIBLE FLAT (6 CORE)
907	1-912-731-11	s CABLE, FLEXIBLE FLAT (12 CORE)
908	2-178-550-01	s HOLDER, SPEAKER
909	2-630-005-31	s SCREW(M2),NEW TRUSTER,P2
910	2-891-494-31	s SCREW(M2),NEW TRUSTER,P2
911	3-080-206-21	s SCREW, TAPPING, P2
912	4-540-533-01	s FOOT (941), RUBBER
913	4-540-615-01	s CLICK (SP), ND
914	4-540-616-01	s KNOB, ND
915	4-737-048-01	s CABINET (973), FRONT
916	4-737-050-01	s FRAME, CMR DIAL
917	4-737-051-01	s FRAME, IRIS
918	4-737-052-01	s BASE, ND
919	4-737-053-01	s KNOB (CMR), MODE
920	4-737-054-01	s BUTTON (973), IRIS
921	4-737-056-01	s BUTTON, WB
922	4-737-057-01	s FRAME, GCN
923	4-737-060-01	s RETAINER, SPEAKER
924	4-737-061-01	s TAPE (FRONT), GND

Handle-1



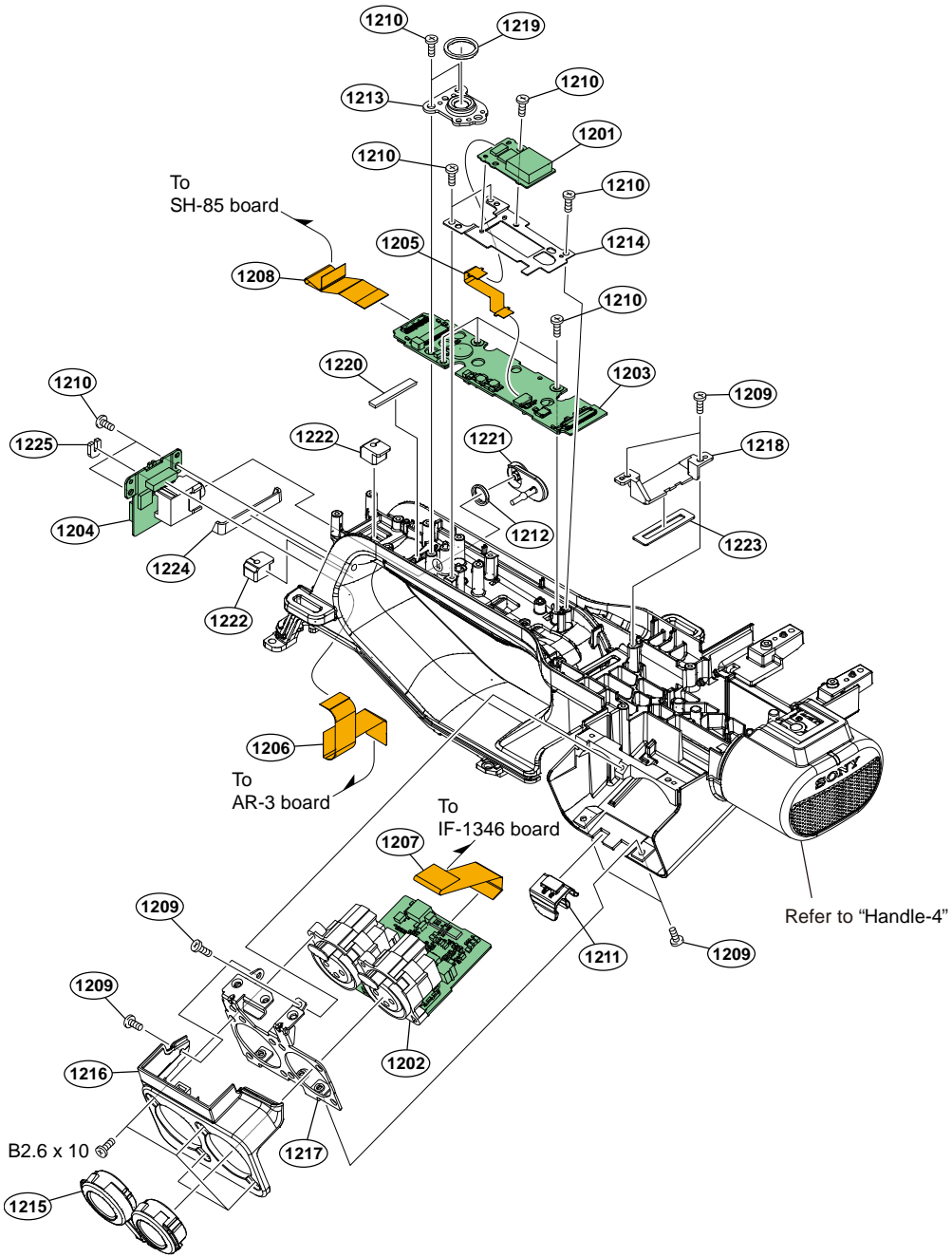
No.	Part No.	SPDescription
1001	A-2193-985-A	s SH-85 MOUNT
1002	X-2596-718-1	s CABINET ASSY, HANDLE (TOP)
1003	X-2596-719-1	s CABINET ASSY, HANDLE (REAR)
1004	1-480-298-11	s SWITCH BLOCK, CONTROL(GZ92000)
1005	2-630-005-31	s SCREW(M2),NEW TRUSTER,P2
1006	2-891-494-31	s SCREW(M2),NEW TRUSTER,P2
1007	3-080-206-21	s SCREW, TAPPING, P2
1008	3-288-483-01	s SPRING, SS LOCK
1009	3-288-511-02	s CLAW, LOCK
1010	3-703-358-06	s PIN, PARALLEL (DIA. 2X14)
1011	4-287-436-21	s SCREW (M1.7)
1012	4-577-882-01	s SPRING, LCD LOCK
1013	4-737-034-01	s BRACKET (REAR), MI
1014	4-737-036-01	s HOLDER (REAR), MI
1015	4-737-040-01	s SHEET (MI), WATERPROOF

Handle-2



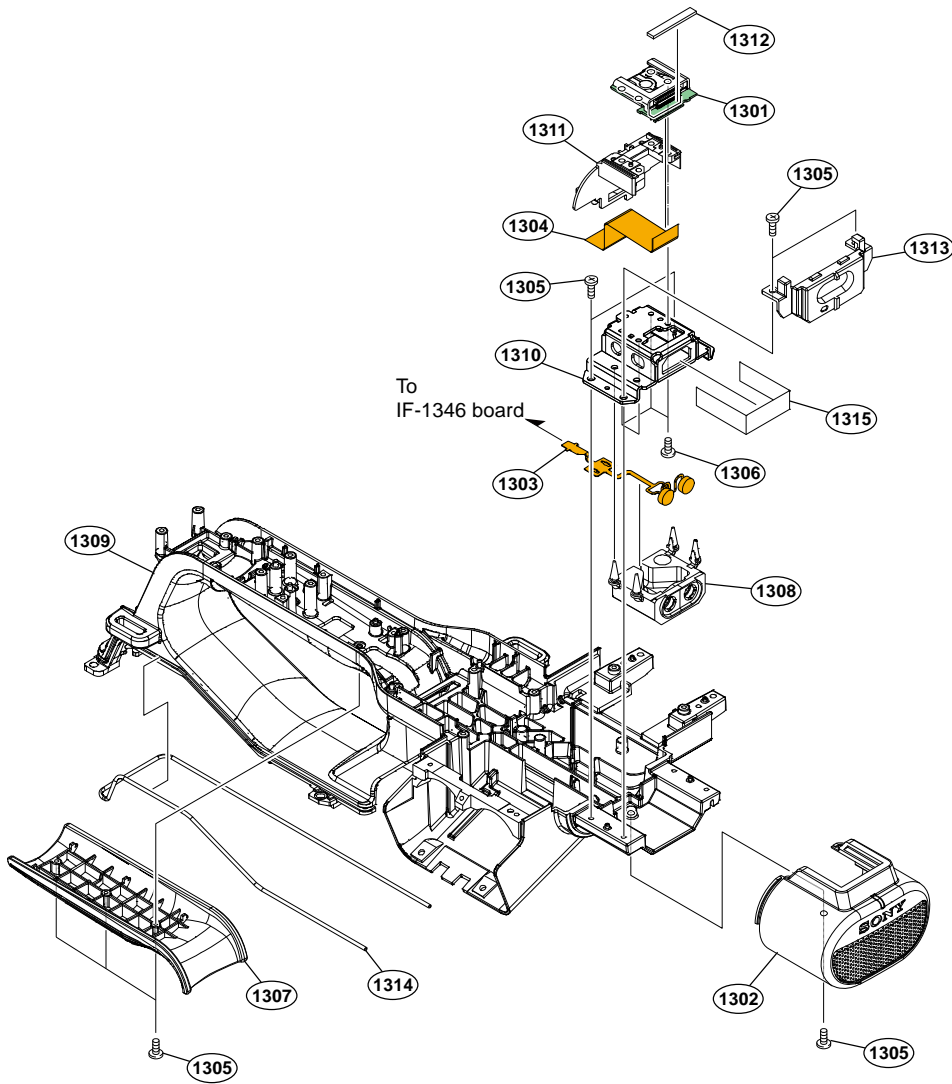
No.	Part No.	SPDescription
1101	A-2225-400-A	s IF-1346 COMPL
1102	1-983-032-11	s PWB, FP-278 FLEXIBLE
1103	1-983-037-11	s PWB, FP-283 FLEXIBLE
1104	1-983-039-11	s PWB, FP-285 FLEXIBLE
1105	2-630-005-31	s SCREW(M2),NEW TRUSTER,P2
1106	3-080-206-21	s SCREW, TAPPING, P2
1107	3-288-474-01	s RUBBER, PANEL RETAINER
1108	4-165-373-31	s BUTTON, CONTROL
1109	4-737-015-01	s PANEL, CONTROL
1110	4-737-016-01	s PLATE, PANEL ELECTROSTATIC
1111	4-737-029-01	s CABINET (FRONT), HANDLE
1112	4-737-030-01	s CABINET (HORIZONTAL), HANDLE
1113	4-739-076-01	s SHEET EFF03 (HN) S
1114	4-739-077-01	s SHEET EFF03 (HN) L

Handle-3



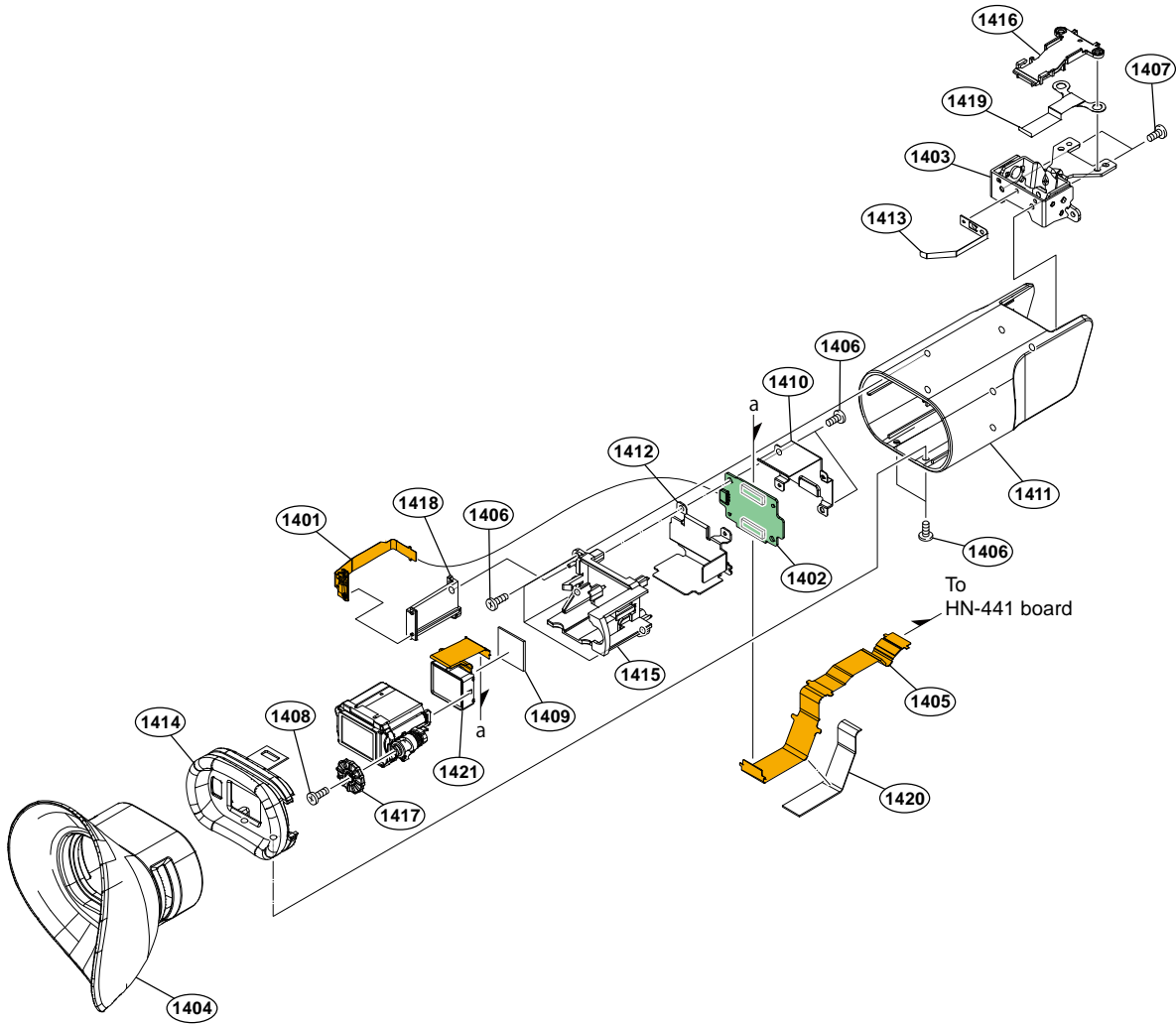
No.	Part No.	SPDescription
1201	A-2059-048-A	s GP-1019 COMPLE(SN11)
1202	A-2193-982-A	s AXM-60 MOUNT
1203	A-2193-984-A	s HN-441 MOUNT
1204	A-2193-987-A	s PSW-109 MOUNT
1205	1-893-019-11	s FP-2231 FLEXIBLE PWB
1206	1-912-726-11	s CABLE, FLEXIBLE FLAT (20 CORE)
1207	1-912-727-11	s CABLE, FLEXIBLE FLAT (26 CORE)
1208	1-912-728-11	s CABLE, FLEXIBLE FLAT (24 CORE)
1209	2-630-005-31	s SCREW(M2),NEW TRUSTER,P2
1210	2-891-494-31	s SCREW(M2),NEW TRUSTER,P2
1211	2-892-095-01	s CLAMP, CABLE
1212	3-061-234-01	s NUT (M6X0.5)
1213	4-269-035-01	s PLATE, SHOE TRIPOD
1214	4-540-586-01	s BRACKET (GP)
1215	4-577-874-01	s COVER, XLR RUBBER
1216	4-737-031-01	s COVER, XLR
1217	4-737-032-01	s BRACKET, XL
1218	4-737-037-02	s RETAINER (FRONT), FPC
1219	4-737-039-01	s SHEET (TRIPOD WASHER)
1220	4-737-040-01	s SHEET (MI), WATERPROOF
1221	4-737-041-01	s COVER, HP JACK
1222	4-737-042-01	s GROMMET (HN)
1223	4-737-083-01	s SHEET (HN), WATERPROOF
1224	4-737-182-01	s SHEET (HN REAR), WATERPROOF
1225	4-741-206-01	s SHEET (HN), LIGHT INTERCEPTION
	7-685-535-19	s SCREW +BTP 2.6X10 TYPE2 N-S

Handle-4



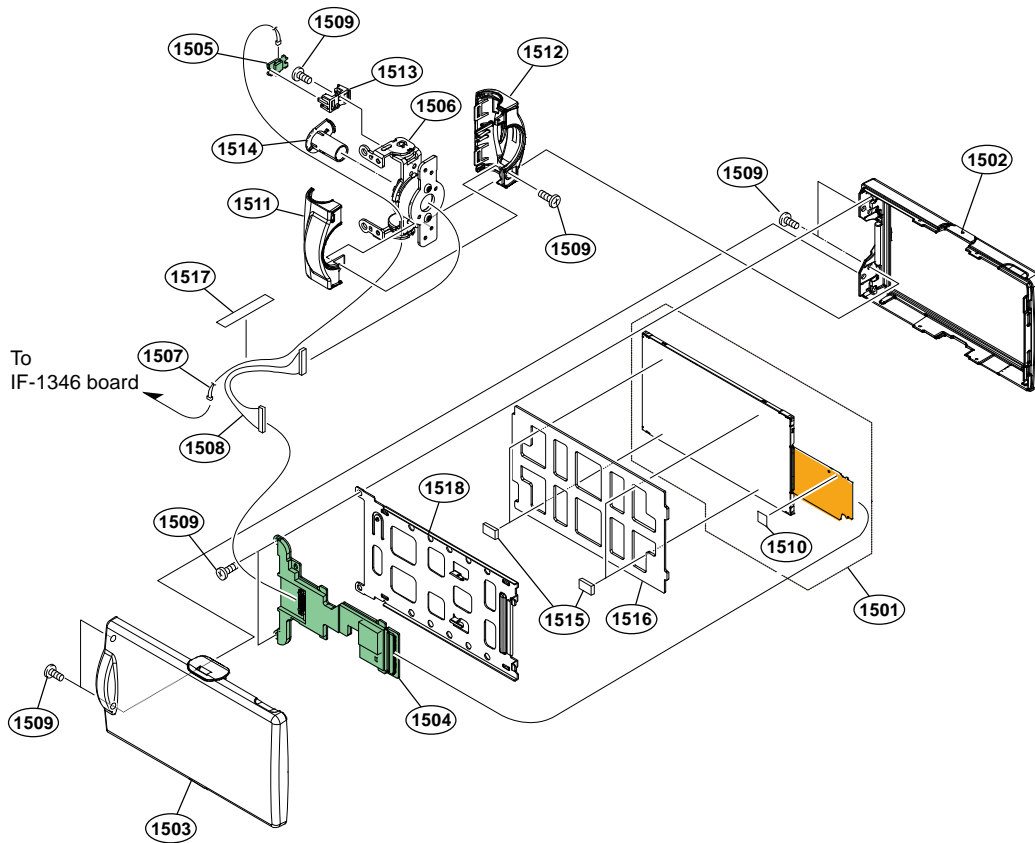
No.	Part No.	SPDescription
1301	A-2193-985-A	s SH-85 MOUNT
1302	X-2596-720-1	s CABINET ASSY, MICROPHONE
1303	1-894-979-11	s MIC UNIT
1304	1-912-728-11	s CABLE, FLEXIBLE FLAT (24 CORE)
1305	2-630-005-31	s SCREW(M2),NEW TRUSTER,P2
1306	4-287-436-21	s SCREW (M1.7)
1307	4-576-395-01	s GRIP, HANDLE
1308	4-577-869-01	s INSULATOR, MIC
1309	4-736-998-01	s HANDLE
1310	4-737-033-01	s BRACKET (FRONT), MI
1311	4-737-035-01	s HOLDER (FRONT), MI
1312	4-737-040-01	s SHEET (MI), WATERPROOF
1313	4-737-119-01	s INNER, MICROPHONE CABINET
1314	4-737-449-01	s TUBE, SILICON (1.3)
1315	4-741-207-01	s SHEET (MI), ACOUSTIC ISOLATION

EVF



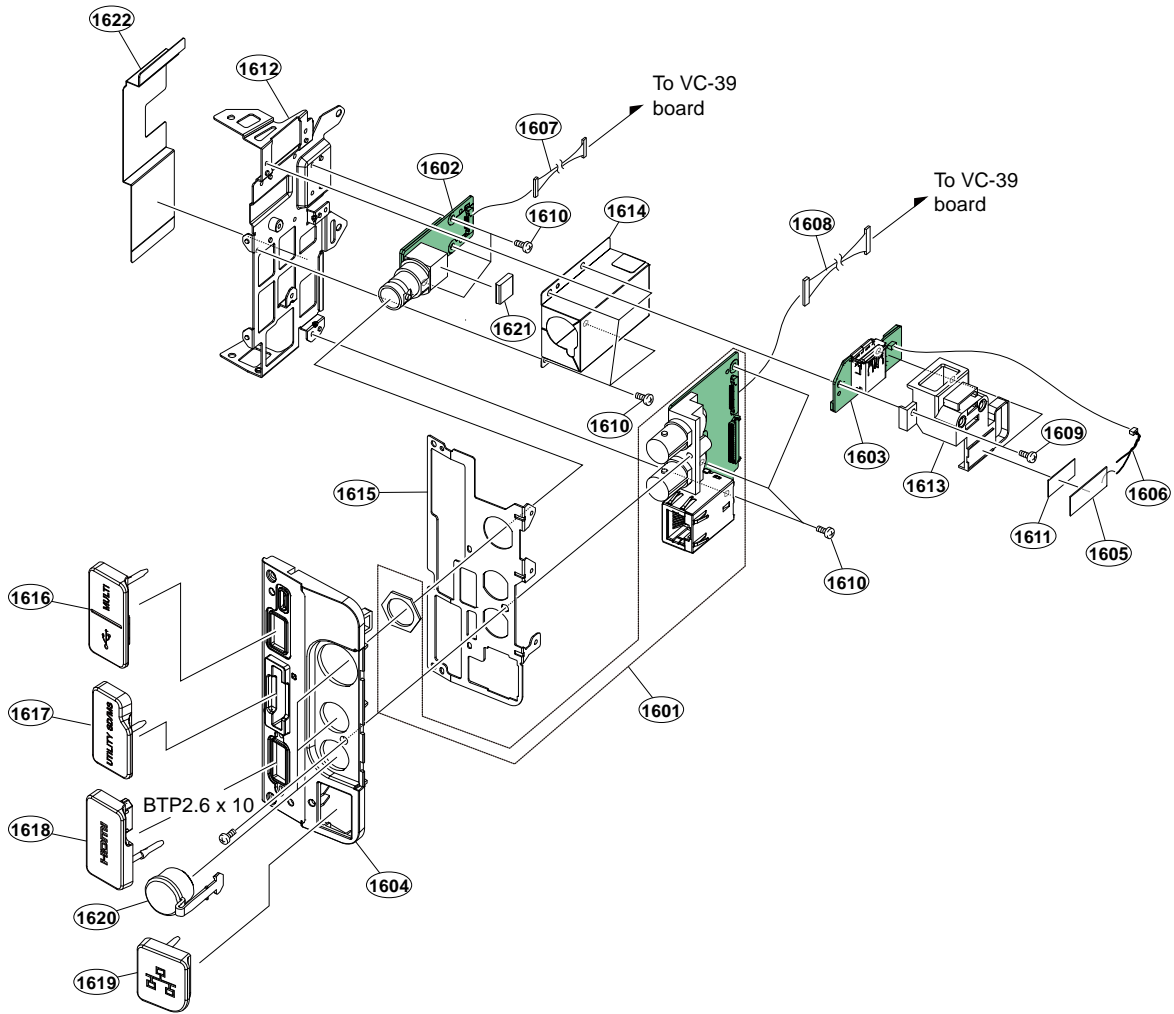
No.	Part No.	SPDescription
1401	A-1902-812-A	s FP-2005 MOUNT
1402	A-2193-975-A	s VF-97 MOUNT
1403	X-2596-717-1	s TILT ASSY, VF
1404	X-2597-449-1	s EYE CUP (LARGE) ASSY
1405	1-983-040-11	s PWB, FP-287 FLEXIBLE
1406	2-630-005-31	s SCREW(M2),NEW TRUSTER,P2
1407	3-080-206-21	s SCREW, TAPPING, P2
1408	4-300-106-11	s BTITE (1.4 (CH))
1409	4-437-473-01	s SHEET (VF), RADIATION
1410	4-547-809-01	s CASE (VF), SHIELD
1411	4-736-999-01	s CABINET, VF
1412	4-737-000-01	s HEAT SINK (973), VF
1413	4-737-002-01	s PLATE, VF ELECTROSTATIC
1414	4-737-003-01	s EYE CUP (973)
1415	4-737-005-01	s HOLDER (973), VF LENS
1416	4-737-007-01	s CABLE (CLAMP), VF
1417	4-737-008-01	s DIAL (973), DIOPTRER ADJ
1418	4-737-010-01	s BASE, EYE SENSOR
1419	4-737-123-01	s TAPE (VF), GND
1420	4-737-183-01	s CUSHION (VF)
1421	8-753-499-12	s ECX331DA-1

LCD Panel



No.	Part No.	SPDescription
1501	A-2066-639-A	s SERVICE, LCD BLOCK ASSY
1502	A-2066-640-A	s P CAB M ASSY (SERVICE)
1503	A-2116-011-A	s P CAB C ASSY (SERVICE)
1504	A-2193-981-A	s PD-126 MOUNT
1505	A-2193-983-A	s RS-55 MOUNT
1506	X-2592-325-2	s HINGE S (40400) ASSY
1507	1-963-030-22	s HARNESS (SW-116)
1508	1-967-783-31	s HARNESS (COAXIAL CABLE)
1509	2-630-005-31	s SCREW(M2),NEW TRUSTER,P2
1510	4-136-717-21	s SHEET (K)
1511	4-460-894-02	s COVER (U), HINGE
1512	4-460-895-02	s COVER (O), HINGE
1513	4-460-897-01	s HOLDER, HT
1514	4-460-898-01	s GUARD, HARNESS
1515	4-535-706-11	s ESD GASKET
1516	4-540-599-01	s CUSHION, LCD
1517	4-583-937-01	s PET SHEET (19X38)
1518	4-737-014-01	s FRAME, PD

Jack



No.	Part No.	SPDescription
1601	A-2193-972-A	s JK-105 MOUNT
1602	A-2193-973-A	s SD-65 MOUNT
1603	A-2193-978-A	s IO-283 MOUNT
1604	X-2596-729-1	s CABINET ASSY (973), JK
1605	1-754-972-12	s NFC ANTENNA
1606	1-846-787-31	s CABLE
1607	1-970-568-11	s HARNESS (IO-DPR-10P)
1608	1-971-952-11	s HARNESS (DPR-AVP)
1609	2-630-005-31	s SCREW(M2),NEW TRUSTER,P2
1610	2-891-494-31	s SCREW(M2),NEW TRUSTER,P2
1611	4-587-101-01	s SHEET, NFC ADHESIVE
1612	4-737-129-01	s FRAME, JK
1613	4-737-130-01	s HOLDER, NFC
1614	4-737-131-01	s CASE, SD SHIELD
1615	4-737-132-01	s BRACKET (973), BNC
1616	4-737-134-01	s LID (REAR), USB
1617	4-737-135-01	s LID, SD
1618	4-737-136-01	s LID, HDMI
1619	4-737-137-01	s LID, ETHER
1620	4-737-138-01	s LID, BNC
1621	4-739-079-01	s GASKET (SD)
1622	4-741-104-01	s SHEET (JK), PROTECTION
	7-685-535-19	s SCREW +BTP 2.6X10 TYPE2 N-S

5-3. Supplied Accessories

Q'ty	Part No.	SPDescription
1pc	X-2597-449-1	S EYE CUP (LARGE) ASSY
1pc	△ 1-846-424-32	S CORD SET, POWER-SUPPLY [For J]
1pc	△ 1-846-425-33	S CORD SET, POWER-SUPPLY [For UC]
1pc	△ 1-846-428-33	S CORD SET, POWER-SUPPLY [For CEE]
1pc	△ 1-846-433-34	S CORD SET, POWER-SUPPLY [For CN1]
1pc	1-846-615-12	S CABLE, CONNECTION (USB)
1pc	△ 1-848-066-32	S AC POWER SUPPLY CORD SET [For India]
1pc	3-278-903-02	S SHOULDER BELT
1pc	△ 4-740-707-01	S CD-ROM PACK