

SONY[®]

SOLID-STATE MEMORY CAMCORDER

PXW-X320

PMW-EX330R

XDCM

SXS

HDMI

MPEG HD422

Exmor
FULL HD 3CMOS

i

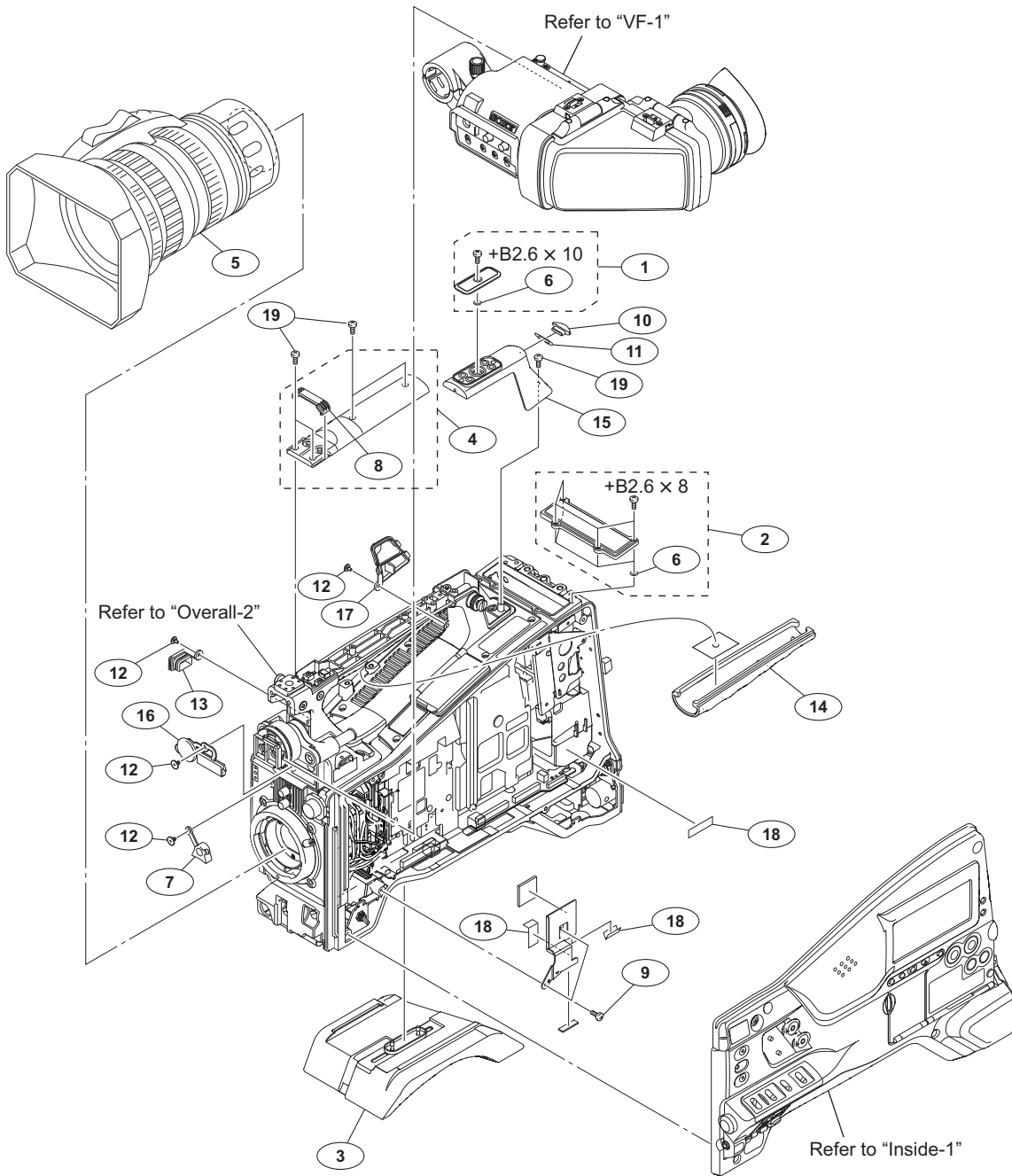
XAVC

SERVICE MANUAL

1st Edition

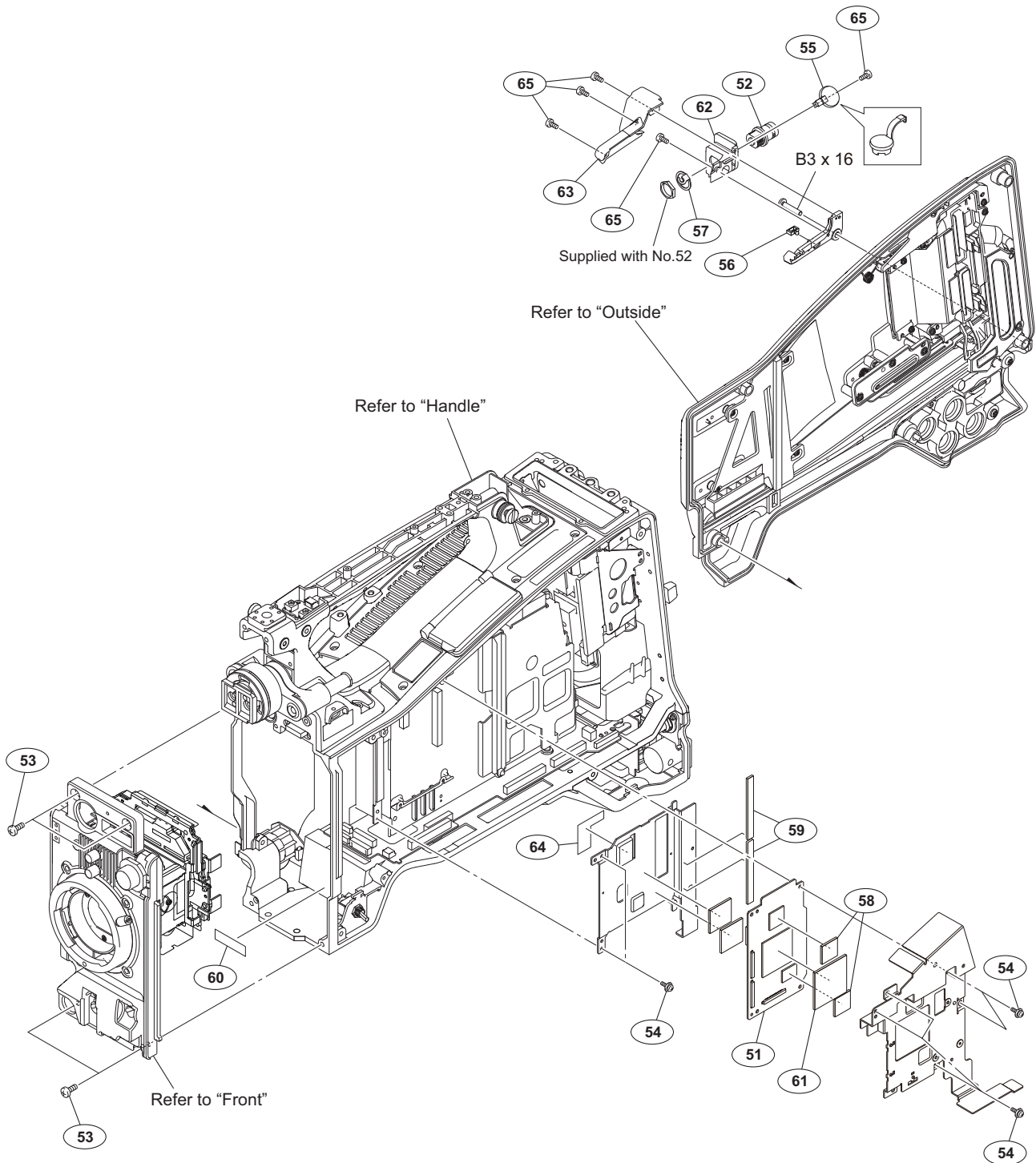
7-2. Exploded Views

Overall-1



No.	Part No.	SP Description	No.	Part No.	SP Description
1	A-1106-989-A	s COVER ASSY, SHOE	15	4-168-998-02	s COVER, TALLY
2	A-1541-534-A	s PLATE (WRR) ASSY, BLIND	16	4-169-085-02	s CAP, CONNECTOR
3	A-1752-736-A	s SHOULDER PAD ASSY	17	4-264-451-01	s CAP (USB2)
4	X-2541-837-4	s COVER ASSY, HANDLE (TOP)	18	4-446-014-01	s TAPE AS (2040)
5	1-856-053-22	s 1/2 INCH, ZOOMLENS	19	4-654-273-02	s ACE (M2), LOCK (B2X5)
6	3-742-004-01	s RING, NYLON			
7	3-796-982-03	s HOLDER LENS MOUNT			
8	3-805-990-01	s HANDLE TOP COVER (TOP)	7-621-775-40	s SCREW +B 2.6X8	
9	3-855-938-01	s SCREW (PSW 2X5)	7-621-775-50	s SCREW +B 2.6X10	
10	3-870-241-02	s COVER, LAMP			
11	3-870-243-02	s SEAL, LAMP COVER			
12	3-965-077-02	s SCREW, SPECIAL (M2) [M2X2.4]			
13	4-168-996-01	s CAP (LIGHT CONNECTOR)			
14	4-168-997-11	s GRIP			

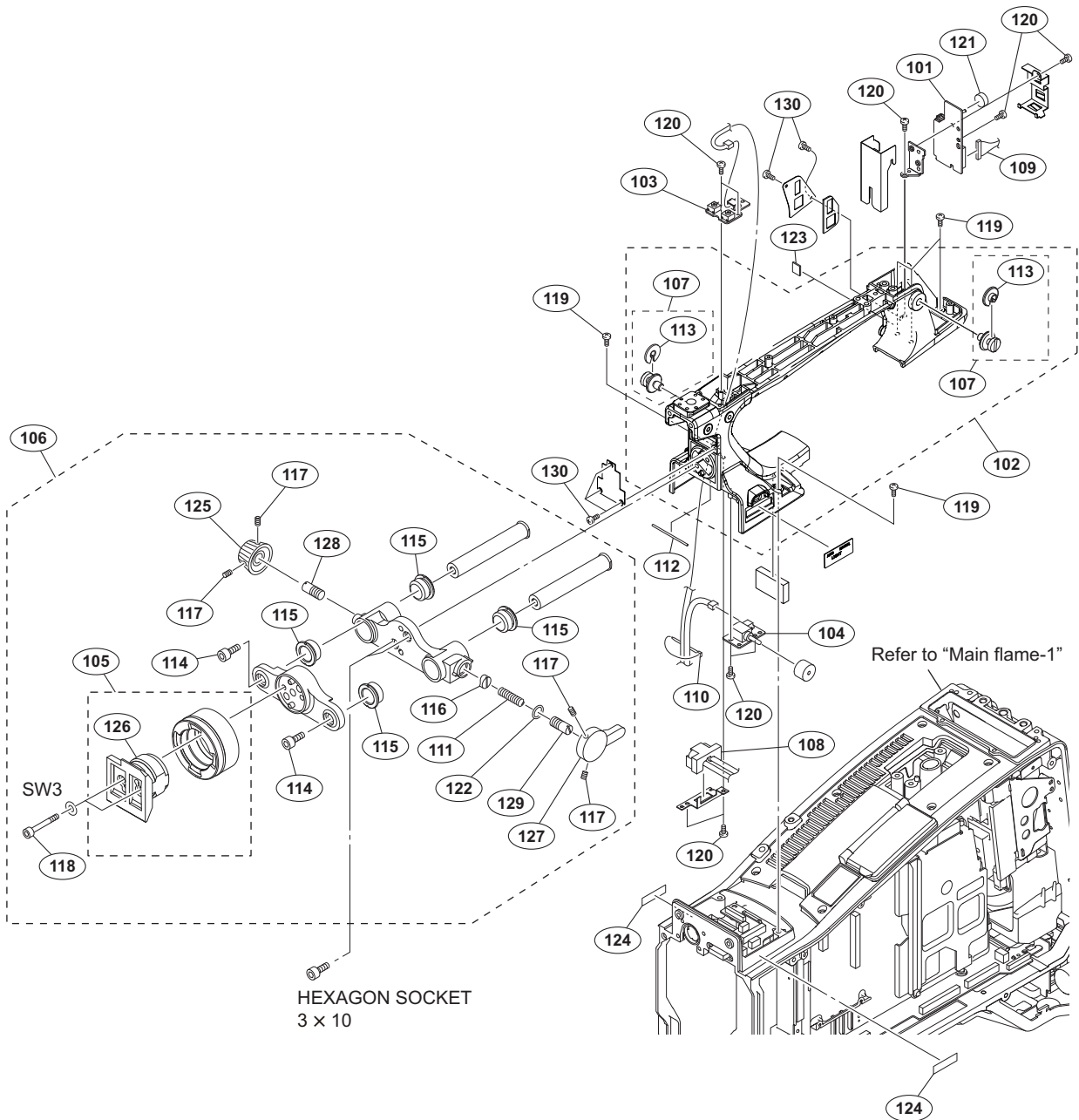
Overall-2



No.	Part No.	SP Description
51	A-1944-671-A	s MOUNTED CIRCUIT BOARD, VPR-122
52	1-784-240-11	s CONVERTER, COAXIAL CONNECTOR
53	3-742-074-13	s SCREW (+B 3X8)
54	3-855-938-01	s SCREW (PSW 2X5)
55	3-872-935-01	s CAP, BNC
56	3-906-254-01	o CLAMP
57	4-136-517-01	s WASHER, BNC COAXIAL FIXED
58	4-427-951-02	s RADIATION SHEET C
59	4-427-954-02	s RADIATION SHEET F
60	4-446-014-01	s TAPE AS (2040)
61	4-460-684-01	s RADIATION SHEET (I), EMC
62	4-469-253-01	s BRACKET (SDI CN)

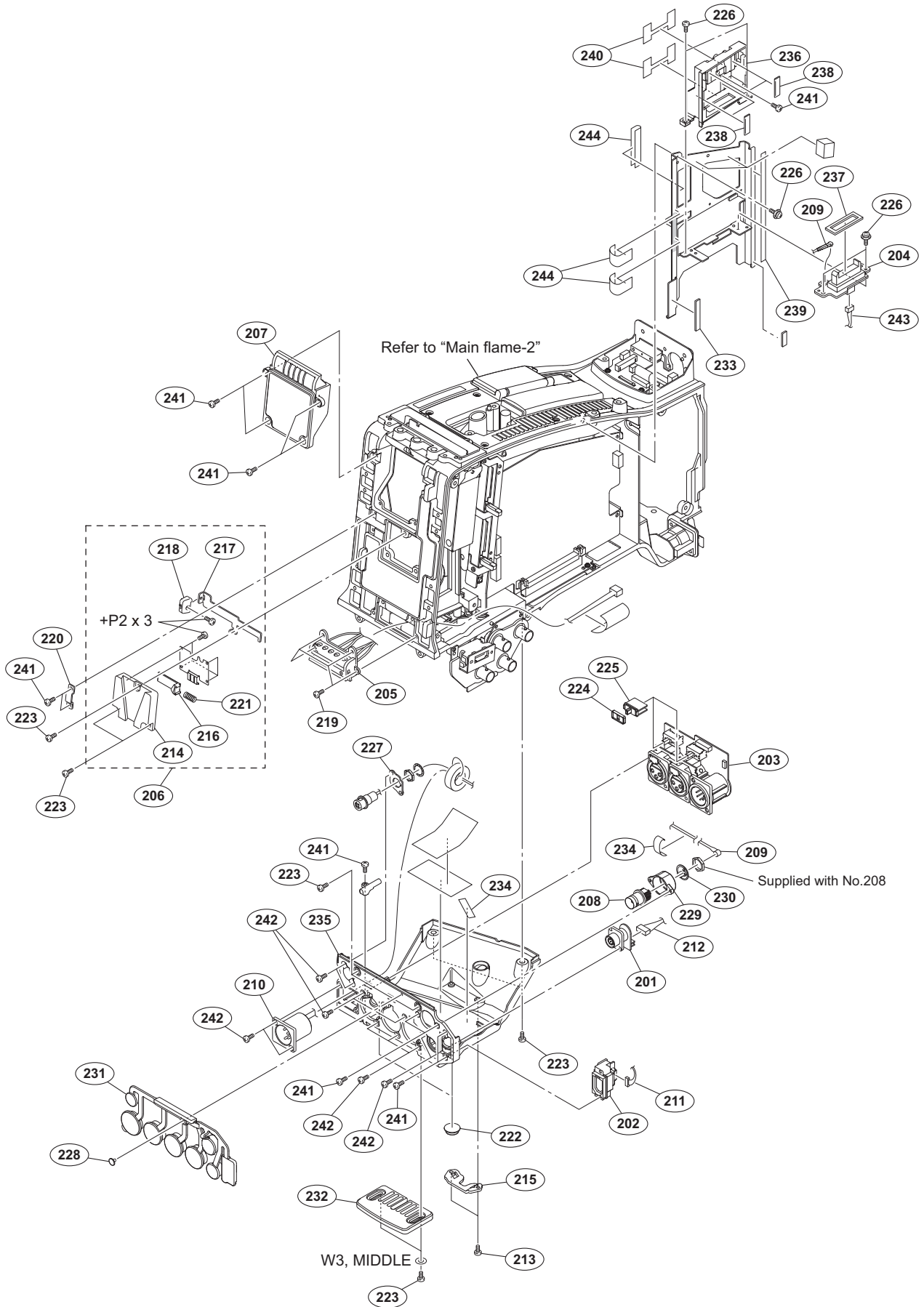
No.	Part No.	SP Description
63	4-469-254-01	s COVER (SDI CN)
64	4-479-540-01	s INSULATING SHEET HS-B
65	4-654-273-02	s ACE (M2), LOCK (B 2X5)
	7-682-552-04	s SCREW +B 3X16

Handle



No.	Part No.	SP Description	No.	Part No.	SP Description
101	A-1944-253-A	s MOUNTED CIRCUIT BOARD, LED-522	119	3-742-074-13	s SCREW (+B 3X8)
102	A-1964-815-A	s HANDLE SUB ASSY	120	3-855-938-01	s SCREW (PSW 2X5)
103	A-1983-530-A	s MOUNTED CIRCUIT BOARD, SW-1475A	121	3-868-631-01	s CUSHION, DROP PROTECTION
104	A-1983-531-A	s MOUNTED CIRCUIT BOARD, SW-1476A	122	3-895-622-01	s RING (DIA. 5), O
105	A-2065-043-A	s SHOE ASSY, VF	123	4-446-005-01	s GASKET MAIN L
106	A-2065-046-A	s SLIDE ASSY, VF	124	4-446-014-01	s TAPE AS (2040)
107	X-3710-037-1	s SUSPENSION ASSY (C)	125	4-549-633-01	s KNOB, LOCK
108	1-967-028-11	s HARNESS, SUB (LIGHT)	126	4-558-057-01	s SHOE, SLIDE
109	1-967-071-13	s HARNESS, SUB (SUB LED)	127	4-558-058-01	s LEVER, LOCK
110	3-337-402-01	o BAND, BINDING	128	4-558-190-01	s LOCK, SCREW
111	3-612-822-01	s SPRING, COMPRESSION	129	4-559-455-01	s PIN, STOPPER
112	3-624-455-01	s TUBE, SHIELD (30000 mm)	130	4-654-273-02	s ACE (M2), LOCK (B 2X5)
113	3-654-615-02	s COLLAR, SUSPENSION			
114	3-657-705-91	s BOLT (M4X8), HEXAGON HOLE			
115	3-679-684-01	s REST, ARM			
116	3-679-702-11	s CUSHION, STOPPER			
117	3-701-507-01	s SET SCREW, DOUBLE POINT, (M3X5)			
118	3-711-765-01	s BOLT (M3), HEXAGON SOCKET			
				7-623-208-22	s SW 3, TYPE 2
				7-683-405-04	s BOLT, HEXAGON SOCKET 3X10

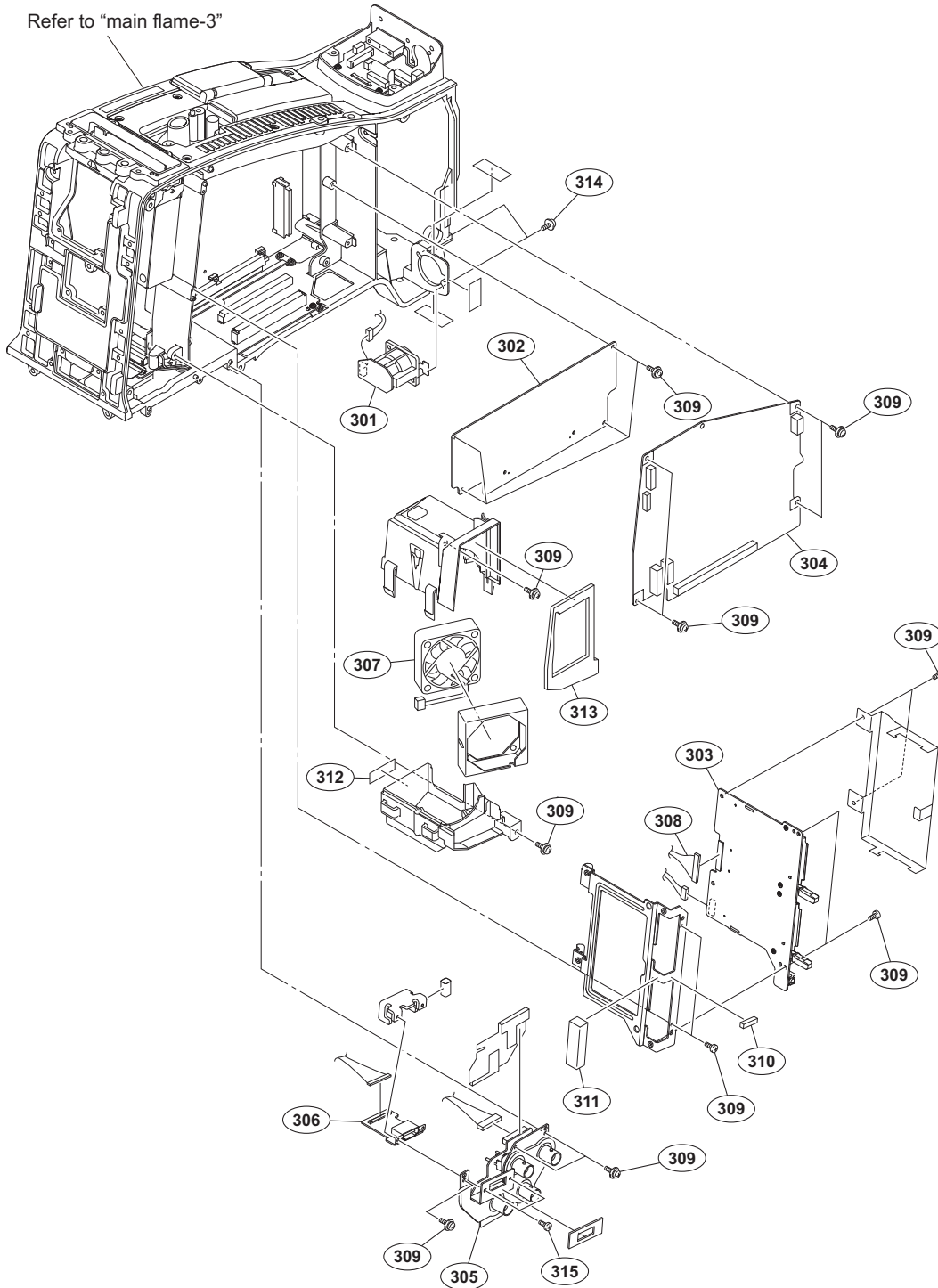
Main Frame-1



Main Frame-1

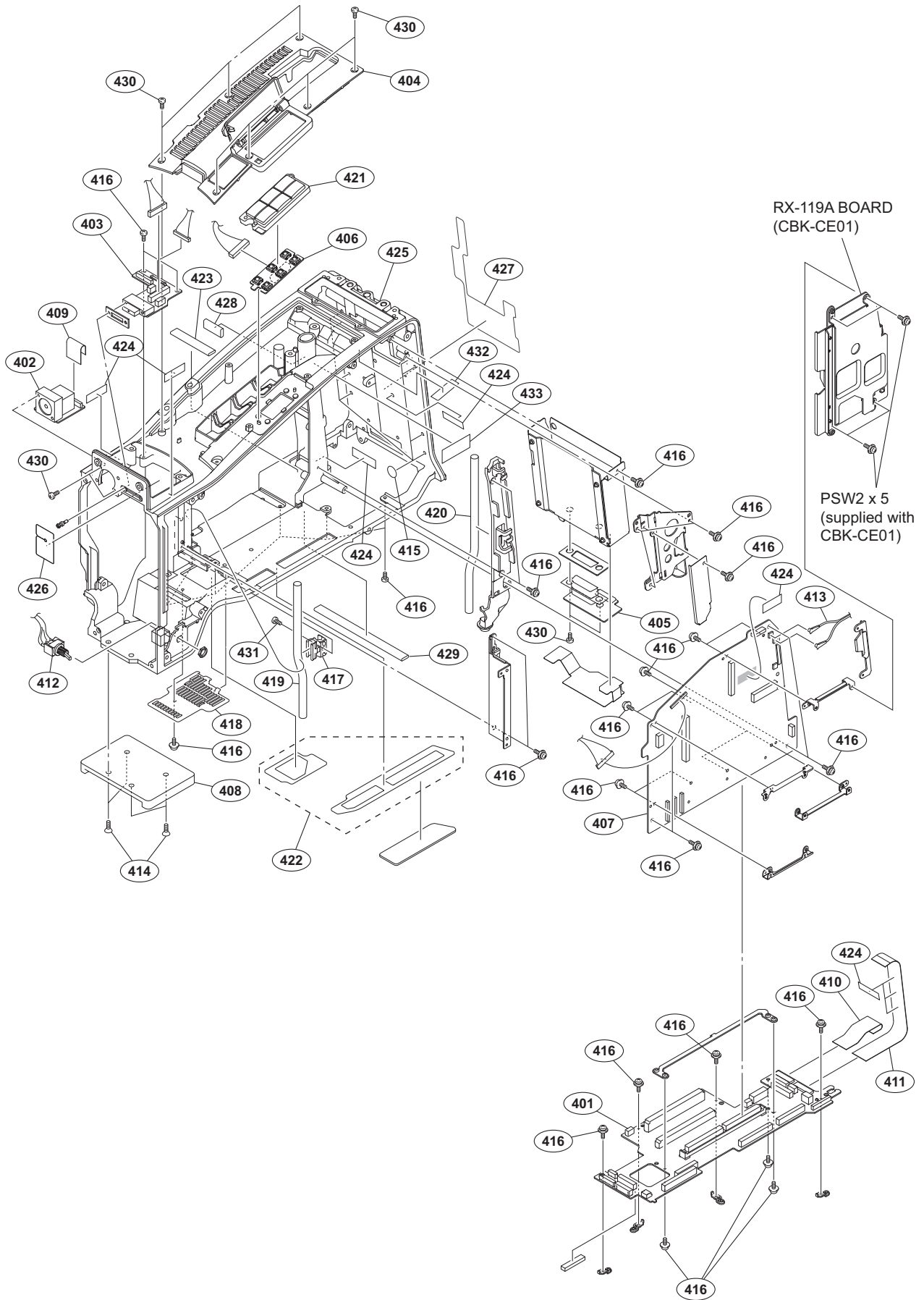
No.	Part No.	SP Description
201	A-1944-246-A	s MOUNTED CIRCUIT BOARD, RM-240
202	A-1944-250-A	s MOUNTED CIRCUIT BOARD, CN-3636
203	A-1944-670-A	s MOUNTED CIRCUIT BOARD, AXM-49
204	A-1962-311-B	s MOUNTED CIRCUIT BOARD, SDI-118
205	A-1968-119-A	s BATTERY HARNESS ASSY
206	A-8279-091-D	s MOUNT ASSY, V
207	X-2587-459-2	s 50P COVER ASSY
208	1-784-240-11	s CONVERTER, COAXIAL CONNECTOR
209	1-837-372-11	s CABLE ASSEMBLY, COAXIAL
210	1-967-024-21	s HARNESS, SUB (DC IN)
211	1-967-025-12	s HARNESS, SUB (ILINK)
212	1-967-026-12	s HARNESS, SUB (RM)
213	3-364-941-01	s SCREW (+B) (2.6X5), NYLOK
214	3-616-721-02	o MOUNT (2), V
215	3-626-781-03	s STOPPER
216	3-679-687-02	s LOCK, SLIDE
217	3-679-688-03	s LEVER, RELEASE
218	3-680-952-02	o KNOB, RELEASE LEVER
219	3-694-181-03	s TYPE1, AROCK PRECISION +P2.6X5
220	3-697-119-03	s RETAINER
221	3-704-964-01	s SPRING, COMPRESSION
222	3-723-097-01	o FOOT, RUBBER
223	3-742-074-13	s SCREW (+B 3X8)
224	3-796-985-02	s CUSHION, DROP PROTECTION
225	3-796-986-02	s KNOB, SLIDE SW
226	3-855-938-01	s SCREW (PSW 2X5)
227	3-870-176-02	s BRACKET (DC OUT)
228	3-965-077-02	s SCREW, SPECIAL (M2) [M2X2.4]
229	3-991-412-01	s BRACKET, BNC (S)
230	4-136-517-01	s WASHER, BNC COAXIAL FIXED
231	4-168-992-01	s COVER (XLR), DROP PROTECTION
232	4-176-668-01	s BOTTOM GUARD
233	4-427-942-02	s GASKET MAIN A
234	4-446-014-01	s TAPE AS (2040)
235	4-467-465-01	s BOX, CONNECTOR
236	4-472-283-01	s CASE (WA)
237	4-475-285-01	s CUSHION (SDI-118 CN)
238	4-475-300-01	s CUSHION (CASE WA)
239	4-475-302-01	s CUSHION (INT BCT)
240	4-475-306-01	s SHEET (CASE WA)
241	4-654-273-02	s ACE (M2), LOCK (B 2X5)
242	4-674-315-01	s SCREW (M2.6X6)
243	1-970-489-11	s SUB HARNESS (MB1205-SD118)
244	3-079-115-01	s TAPE AS
	7-627-553-38	s SCREW, PRECISION +P 2X3
	7-688-003-12	s W3, MIDDLE

Main Frame-2



No.	Part No.	SP Description	No.	Part No.	SP Description
301	A-1944-247-A	s MOUNTED CIRCUIT BOARD, CN-3623	313	4-468-131-01	s CUSHION, JOINT
302	A-1944-667-A	s MOUNTED CIRCUIT BOARD, AU-352	314	4-674-315-01	s SCREW (M2.6X6)
303	A-1944-669-A	s MOUNTED CIRCUIT BOARD, EC-77	315	2-635-562-31	s SCREW(M1.7) [P1.7X4]
304	A-1944-802-B	s MOUNTED CIRCUIT BOARD, RE-316			
305	A-1981-778-A	s MOUNTED CIRCUIT BOARD, IO-247C			
306	A-1983-525-A	s MOUNTED CIRCUIT BOARD, DIF-215A			
307	△ 1-855-024-11	s FAN, DC (40 SQUARE)			
308	1-967-037-11	s HARNESS (DPR-EC)			
309	3-855-938-01	s SCREW (PSW 2X5)			
310	4-000-497-01	s FOAM (ILI), SHIELD			
311	4-176-598-02	s FOAM(10X10X20), SHIELD			
312	4-446-014-01	s TAPE AS (2040)			

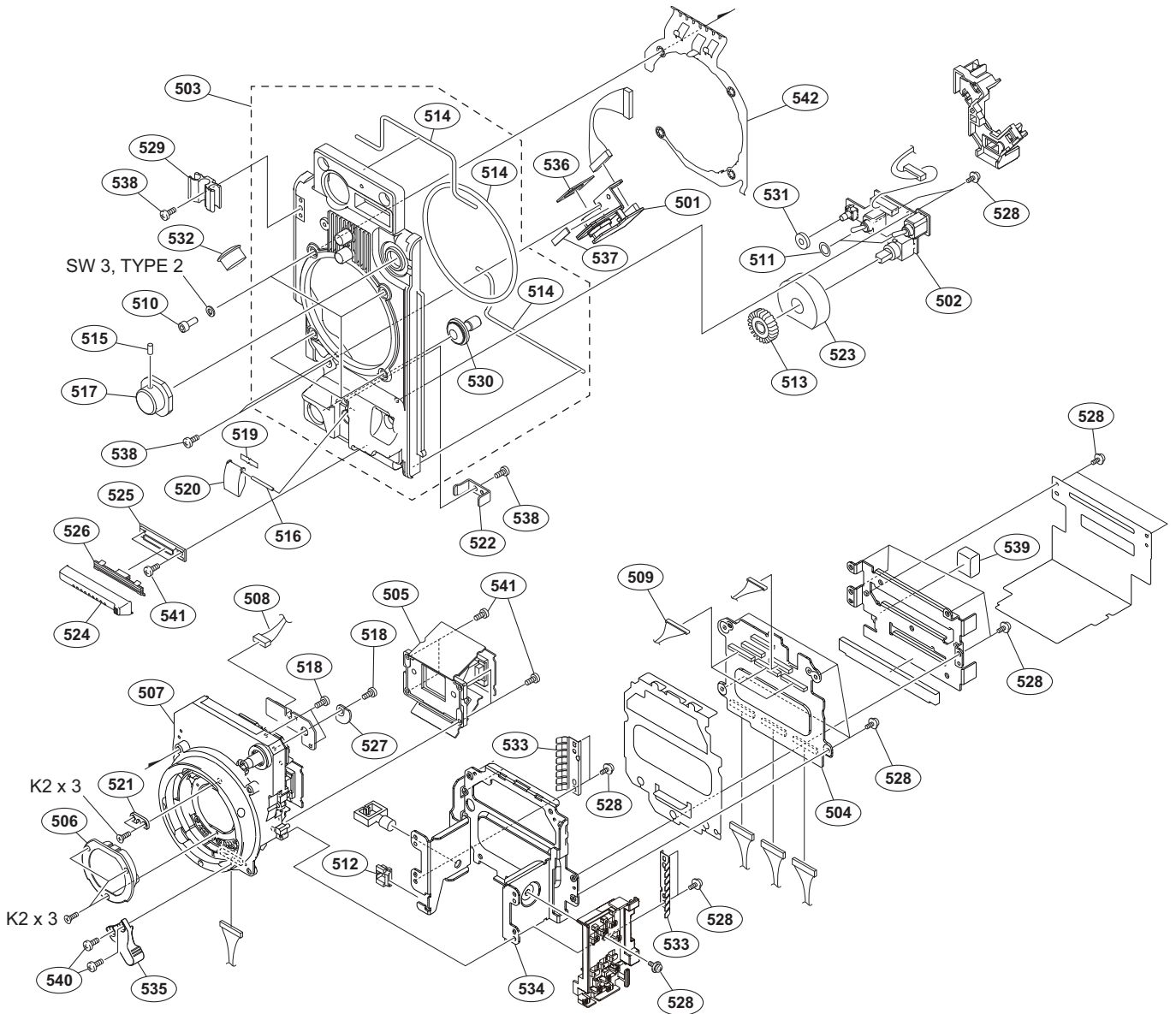
Main Frame-3



Main Frame-3

No.	Part No.	SP Description
401	A-1944-243-B s	MOUNTED CIRCUIT BOARD, MB-1205
402	A-1944-249-A s	MOUNTED CIRCUIT BOARD, CN-3635
403	A-1944-251-A s	MOUNTED CIRCUIT BOARD, HN-410
404	A-1968-118-A s	COVER ASSY, TOP
405	A-1983-526-A s	MOUNTED CIRCUIT BOARD, RX-117A
406	A-1983-527-A s	MOUNTED CIRCUIT BOARD, KY-658A
407	A-2077-434-A s	MOUNTED CIRCUIT BOARD, DPR-354 (X320)
	A-2077-436-A s	MOUNTED CIRCUIT BOARD, DPR-354 (EX330R)
408	A-8279-993-D s	SHOE (D) ASSY, V
409	1-837-295-11 s	CABLE, FLEXIBLE FLAT (30 CORE)
410	1-837-296-11 s	CABLE, FLEXIBLE FLAT (30 CORE)
411	1-837-297-11 s	CABLE, FLEXIBLE FLAT (30 CORE)
412	1-967-041-12 s	HARNES, SUB (POWER SW)
413	1-968-567-11 s	CABLE ASSEMBLY, COAXIAL
414	3-729-072-02 s	SCREW, +K (4X8)
415	3-796-946-03 s	TAPE (A)
416	3-855-938-01 s	SCREW (PSW 2X5)
417	4-138-678-01 s	CLAMP, CABLE
418	4-168-987-02 s	COVER BOTTOM
419	4-169-108-02 s	TUBE, DRAIN
420	4-169-108-12 s	TUBE, DRAIN
421	4-169-111-01 s	KEYSW COVER
422	4-169-114-03 s	MESH, BOTTOM
423	4-176-603-01 s	FAOM (7X2), SHIELD
424	4-446-014-01 s	TAPE AS (2040)
425	4-467-480-03 s	FRAME, MAIN
426	4-468-127-01 s	CUSHION (LIGHT)
427	4-468-130-01 s	SHEET, REAR
428	4-468-137-02 s	FOAM (10X6), SHIELD
429	4-468-138-02 s	FOAM (7X2), SHIELD
430	4-654-273-02 s	ACE (M2), LOCK (B 2X5)
431	4-674-315-01 s	SCREW (M2.6X6)
432	3-079-115-01 s	TAPE AS
433	4-488-383-01 s	TAPE (13X50) //C

Front

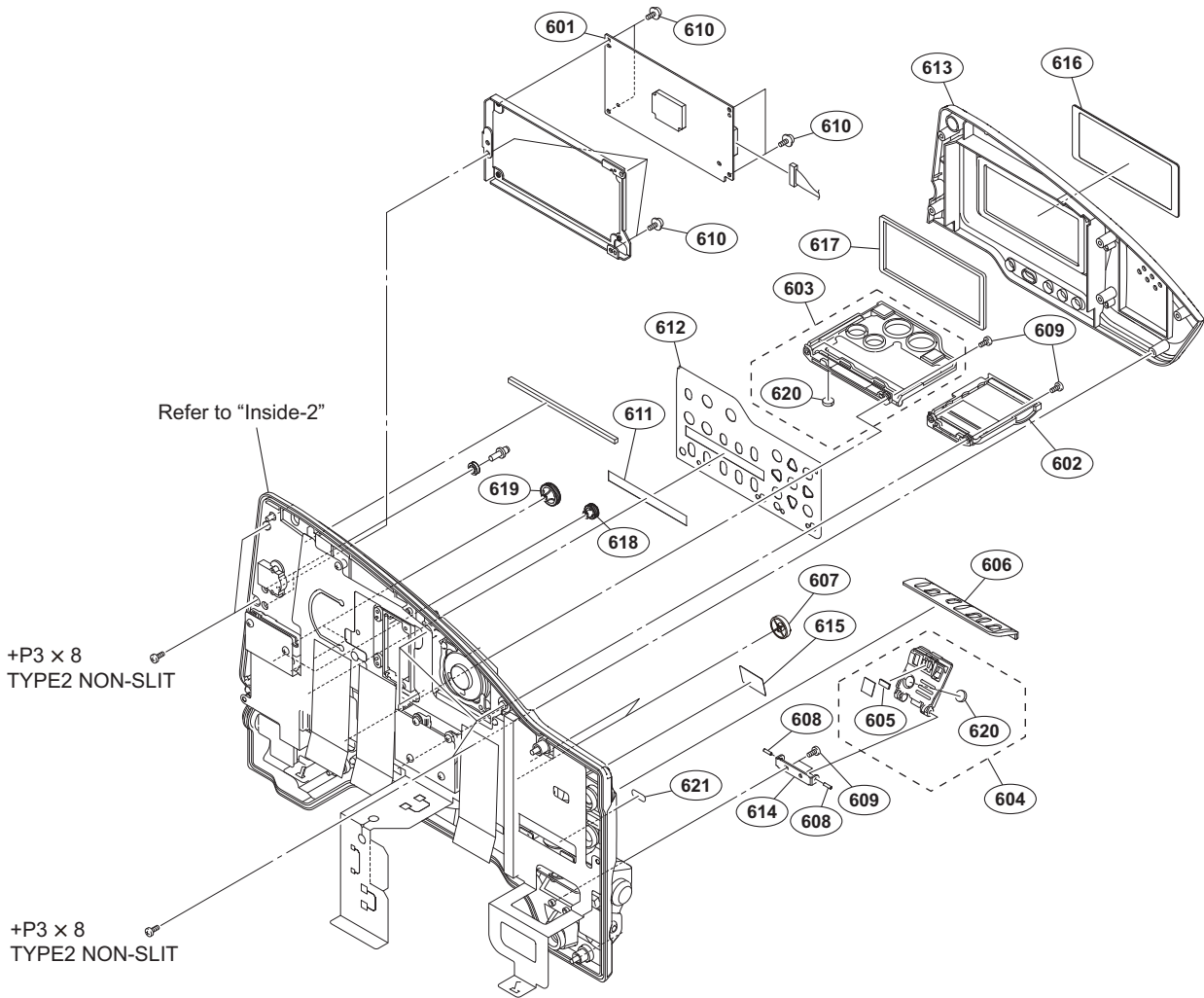


No.	Part No.	SP Description	No.	Part No.	SP Description
501	A-1945-346-A	s MOUNTED CIRCUIT BOARD, CN-3268A	522	3-796-965-01	s BRACKET, SHUTTER
502	A-1983-529-A	s MOUNTED CIRCUIT BOARD, SW-1474A	523	3-797-080-01	s DROP PROTECTION (MIC VR)
503	A-1989-370-A	s PANEL SUB ASSY (//C), FRONT	524	3-854-361-01	s GUARD VOLUME FRONT
504	A-2076-023-A	s MOUNTED CIRCUIT BOARD, HN-428	525	3-854-362-01	s HOLDER GUARD
505	A-2081-531-A	s PRISM ASSY (RP)	526	3-854-363-01	s SLIDER
506	1-856-132-11	s FILTER UNIT, OPTICAL	527	3-854-378-01	s PLATE, FILTER ID
507	1-856-133-11	s MOUNT, LENS	528	3-855-938-01	s SCREW [PSW2X5]
508	1-967-049-01	s HARNESS, SUB (SE)	529	3-870-272-02	s CLAMP, CABLE
509	1-970-801-11	s HARNESS, SUB (CMOS) (320)	530	3-986-632-02	s BUTTON, VTR START
510	2-623-773-11	s BOLT (M3X8), STAINLESS	531	3-990-897-01	s CUSHION REC (SW)
511	3-312-823-01	s PACKING, KNOB	532	3-991-431-01	s CAP, DROP PROTECTION
512	3-383-699-01	s CLAMP (EDGE)	533	4-000-739-02	s SHIELD FINGER (F-0)
513	3-624-135-01	s KNOB, VR (AUDIO)	534	4-198-548-02	s BRACKET HN
514	3-624-455-01	s TUBE, SHIELD	535	4-198-910-01	s LEVER, MOUNT
515	3-701-505-01	s SET SCREW, DOUBLE POINT 3X3	536	4-468-156-01	s CUSHION, DROPPROTECTION CONNEC
516	3-703-357-05	s PIN, PARALLEL (DIA. 1.6X8)	537	4-468-157-01	s CUSHION, DROP PROTECTION 2
517	3-710-054-01	s KNOB, FILTER	538	4-559-446-01	s SCREW, +P2.6X5 LOCK ACE
518	3-729-076-11	s SCREW (+B) (2X4)	539	4-573-036-01	s GASKET (10X13X7)
519	3-742-066-11	o SPRING, SHUTTER	540	4-644-492-72	s ACE (M2), LOCK [B2X4]
520	3-742-067-06	s LID, SHUTTER	541	4-654-273-02	s ACE (M2), LOCK [B2X5]
521	3-776-897-02	s GUIDE PLATE			

Front

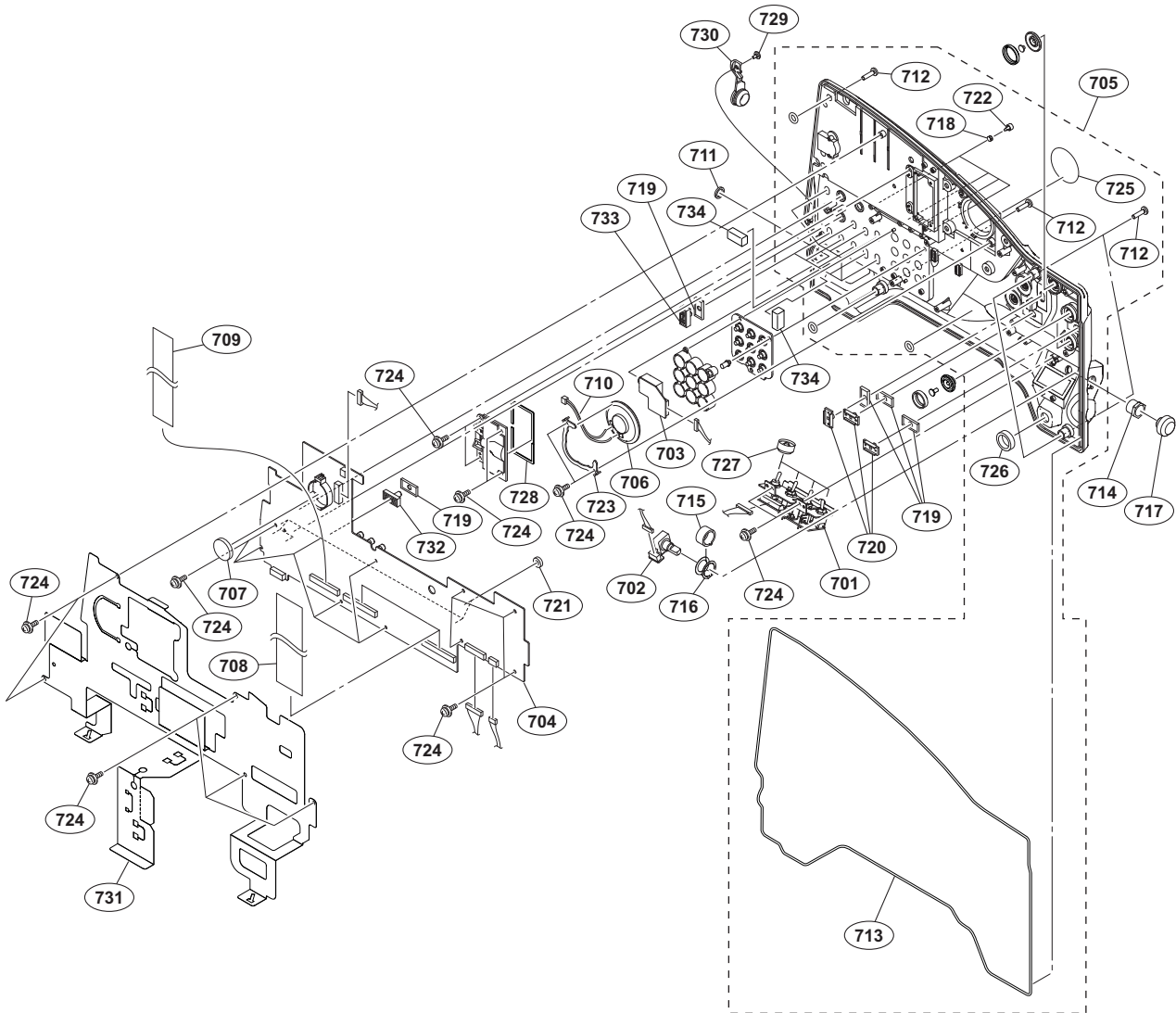
No.	Part No.	SP Description
542	3-879-494-02 s	FINGER (LM), SHIELD
	7-623-208-22 s	SW 3,TYPE 2
	7-627-452-18 s	SCREW, PRECISION +K 2X3

Inside-1



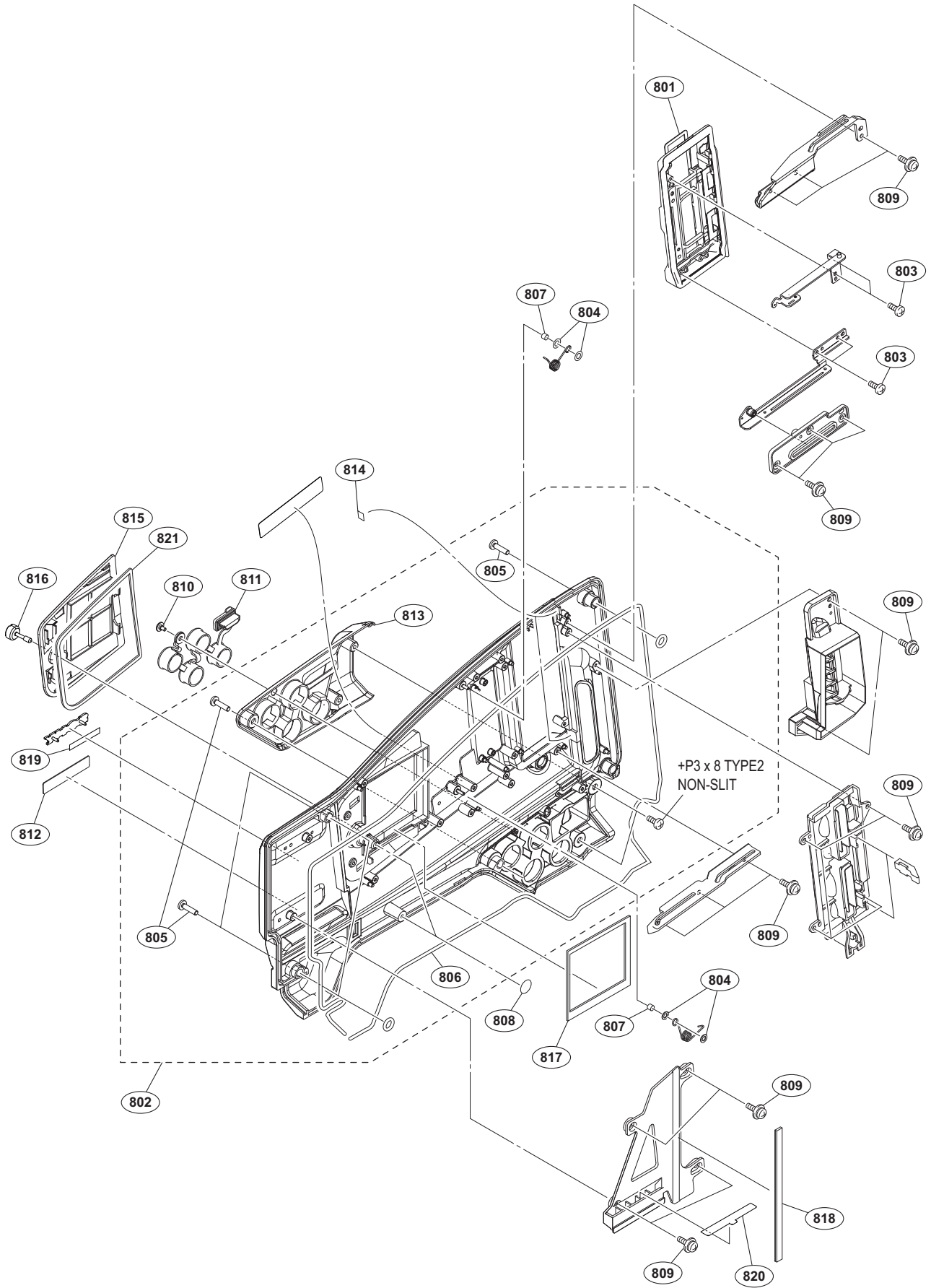
No.	Part No.	SP Description
601	A-1944-668-A	s MOUNTED CIRCUIT BOARD, PD-122
602	A-1968-122-A	s SWITCH DOOR (L) ASSY
603	A-1968-123-A	s SWITCH DOOR (R) ASSY
604	A-1989-371-A	s DOOR ASSY (//C), MENU
605	1-471-483-11	s MAGNET, LCD
606	3-629-768-52	s ORNAMENTAL PLATE(3), SW, CAMERA
607	3-680-219-03	s KNOB,VR
608	3-703-357-03	s PIN, PARALLEL (DIA. 1.6X6)
609	3-719-381-02	s SCREW (M2X4)
610	3-855-938-01	s SCREW (PSW 2X5)
611	3-879-092-01	s SHEET, SW PANEL
612	4-169-005-01	s PLATE, SW ORNAMENTAL
613	4-467-509-02	s PAD, INSIDE
614	4-467-510-01	s HINGE, MENU DOOR
615	4-468-152-01	s LABEL, FILTER INDICATION
616	4-468-153-01	s WINDOW, LCD
617	4-468-154-01	s CUSHION, LCD
618	4-472-861-01	s VR KNOB (S)
619	4-472-862-01	s VR KNOB (2)
620	4-644-879-11	s FOOT (B-2)
621	4-574-010-01	s LABEL, IMAGE FORMATION MARK
	7-685-146-11	s SCREW +P 3X8 TYPE2 NON-SLIT

Inside-2



No.	Part No.	SP Description	No.	Part No.	SP Description
701	A-1944-254-A	s MOUNTED CIRCUIT BOARD, SW-1602	725	3-868-597-01	s SHEET (SP), DROP PROTECTION
702	A-1944-255-A	s MOUNTED CIRCUIT BOARD, ENC-154	726	3-870-098-01	s CUSHION, POWER SWITCH
703	A-1944-257-A	s MOUNTED CIRCUIT BOARD, HP-165	727	3-870-137-02	s CAP, DROP PROTECTION
704	A-1945-345-B	s MOUNTED CIRCUIT BOARD, FP-169C	728	3-870-138-01	s SHEET, HARNESS DROP PROTECTION
705	A-2078-356-A	s INSIDE PANEL SUB ASSY	729	3-965-077-02	s SCREW, SPECIAL (M2) [M2X2.4]
706	1-503-293-12	s SPEAKER	730	4-168-991-01	s COVER, HEADPHONE JACK
707	△ 1-528-174-72	s BATTERY, LITHIUM (CR2032 TYPE)	731	4-468-537-01	s INSULATING SHEET, FP
708	1-837-293-11	s CABLE, FLEXIBLE FLAT (30 CORE)	732	4-472-863-01	s KNOB (B), SWITCH
709	1-837-294-11	s CABLE, FLEXIBLE FLAT (25 CORE)	733	4-472-864-01	s KNOB (C), SWITCH
710	1-967-045-12	s HARNESS, SUB (SPEAKER)	734	4-176-598-02	s FOAM(10X10X20), SHIELD
711	3-061-234-01	s NUT (M6X0.5)			
712	3-603-680-02	s STAINLESS SCREW +B3X12			
713	3-624-455-01	s TUBE, SHIELD (30000 mm)			
714	3-629-446-04	s SLEEVE (ENC2)			
715	3-629-447-03	o SLEEVE (ENC1)			
716	3-647-917-02	s PLATE, EARTH			
717	3-692-111-02	s KNOB, RE			
718	3-724-758-02	s RUBBER (PUSH), DROP PROTECTION			
719	3-796-995-01	s DROP PROTECTION (SW)			
720	3-796-996-03	s KNOB (A), SW			
721	3-797-016-01	s CUSHION VOLUME AUDIO			
722	3-797-073-01	s RES, SW PUSE			
723	3-797-084-01	s HOLDER SPEAKER			
724	3-855-938-01	s SCREW (PSW 2X5)			

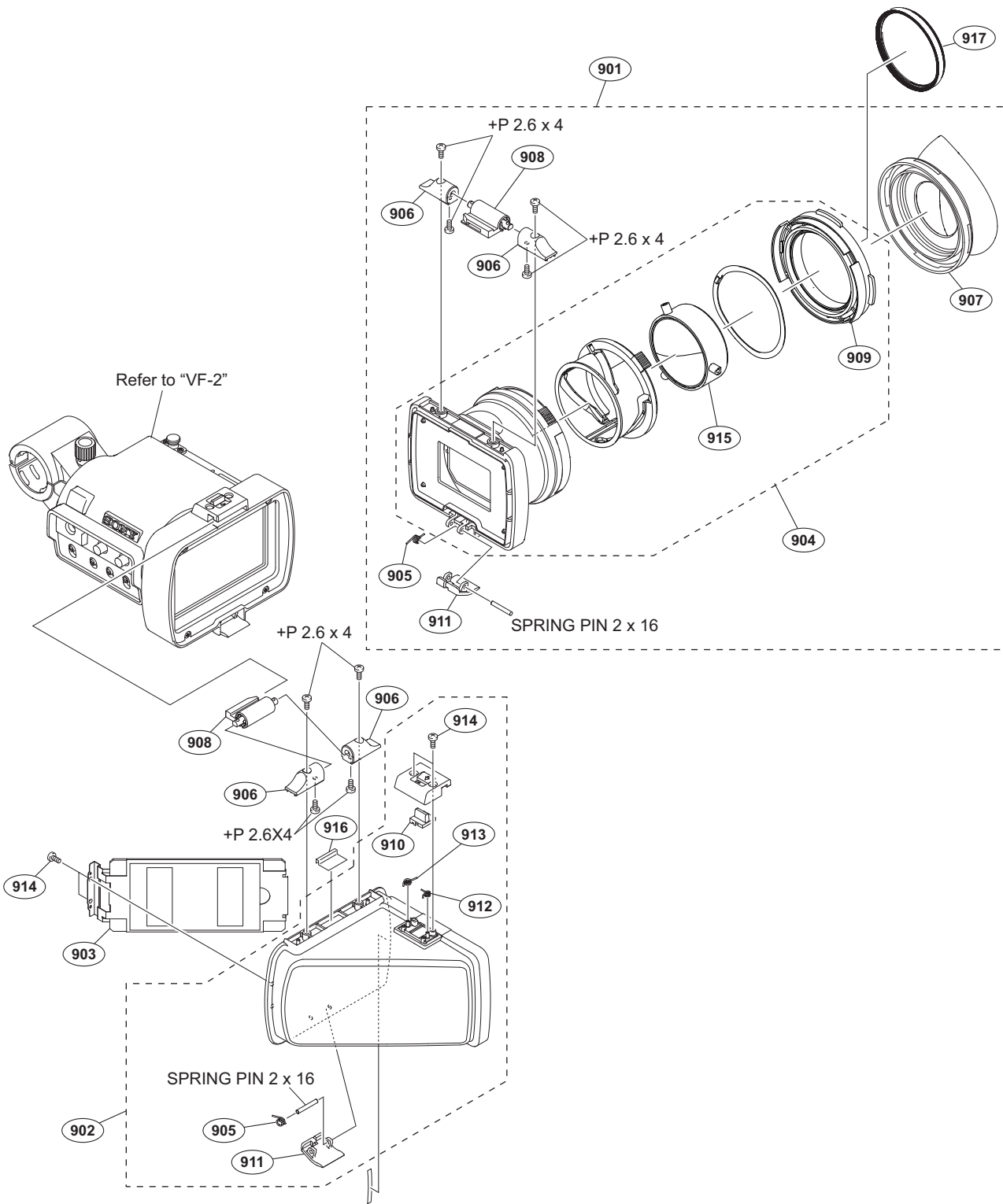
Outside



Outside

No.	Part No.	SP Description
801	A-1968-115-B s	LID ASSY, SLOT
802	A-1983-403-A s	PANEL SUB ASSY, OUTSIDE (RP)
803	3-080-206-21 s	SCREW, TAPPING, P2 (2X5)
804	3-223-464-01 s	SPACER (SLIDER)
805	3-603-680-02 s	STAINLESS SCREW +B3X12
806	3-624-455-01 s	TUBE, SHIELD (30000 mm)
807	3-657-841-31 s	SPACER (2X2.5)
808	3-796-946-03 s	TAPE (A)
809	3-855-938-01 s	SCREW (PSW 2X5)
810	3-965-077-02 s	SCREW, SPECIAL (M2) [M2X2.4]
811	4-168-993-01 s	CAP, BNC
812	4-168-995-01 s	EMBLEM (LEO), EXMOR
813	4-467-428-01 s	COVER, BNC
814	4-468-114-01 s	STOPPER (OPEN)
815	4-473-528-01 s	PANEL (WA), BLANK
816	4-474-177-01 s	SCREW, COIN
817	4-475-301-01 s	CUSHION (OS WA)
818	4-475-302-01 s	CUSHION (INT BCT)
819	3-870-153-01 s	SHEET (4.5X30), ADHESIVE
820	4-565-672-01 s	SHEET, OUTSIDE SEALING
821	4-475-686-01 s	CUSHION (BLANK PANEL)
	7-685-146-11 s	+P3X8 TYPE2 NON-SLIT

VF-1



No.	Part No.	SP Description	No.	Part No.	SP Description
901	A-1853-004-A	s LOUPE ASSY	910	4-559-613-01	s SWITCH, SLIDE
902	A-1971-905-B	s ELBOW SUB ASSY	911	4-559-616-01	s LEVER, LOCK
903	X-2541-756-2	s MIRROR ASSY	912	4-562-250-01	s SPRING (A90), TORSION
904	1-856-308-14	s LOUPE, VF	913	4-562-251-01	s SPRING (A-70), TORSION
905	3-878-206-02	s SPRING, TORSION COIL	914	4-654-273-02	s ACE (M2), LOCK (B 2X5)
906	3-878-207-02	s BLOCK, SHAFT FIXED	915	A-2067-540-A	s LENS HOLDER (REAR) SUB ASSY
907	3-878-208-02	s EYE CUP	916	4-181-855-01	s GASKET (ELBOW)
908	3-878-209-02	s HINGE, SWITCHING			
909	4-284-225-02	s HOLDER, EYE CUP			

VF-1

No.	Part No.	SP Description
917	4-558-737-01	s PROTECTOR, MC-N52
	7-621-284-00	s SCREW +P 2.6X4
	7-626-314-31	s SPRING PIN 2X16

7-3. Supplied Accessories

Q'ty	Part No.	SP Description
1pc	A-6772-374-C	s BELT ASSY, SHOULDER
1pc	X-2546-633-1	s KIT,COLD SHOE
1pc	1-542-823-14	s MICROPHONE (STEREO)
1pc	3-764-889-01	o CHART, ADJUSTMENT
1pc	3-991-419-01	s WIND SCREEN
1pc	△ 4-573-711-01	s CD-ROM (INSTRUCTION MANUAL) (for PXW-X320)