

**SONY**<sup>®</sup>

SOLID-STATE MEMORY CAMCORDER

**PXW-X400**

**PXW-X400KC**

**PXW-X400KF**

**PXW-X580**

**PXW-X580KC**

**PXW-X580KF**

**XDCAM SXS**

**MPEG HD422**

**MPEG IMX**

**HDMI XAVC**

**DVCAM**

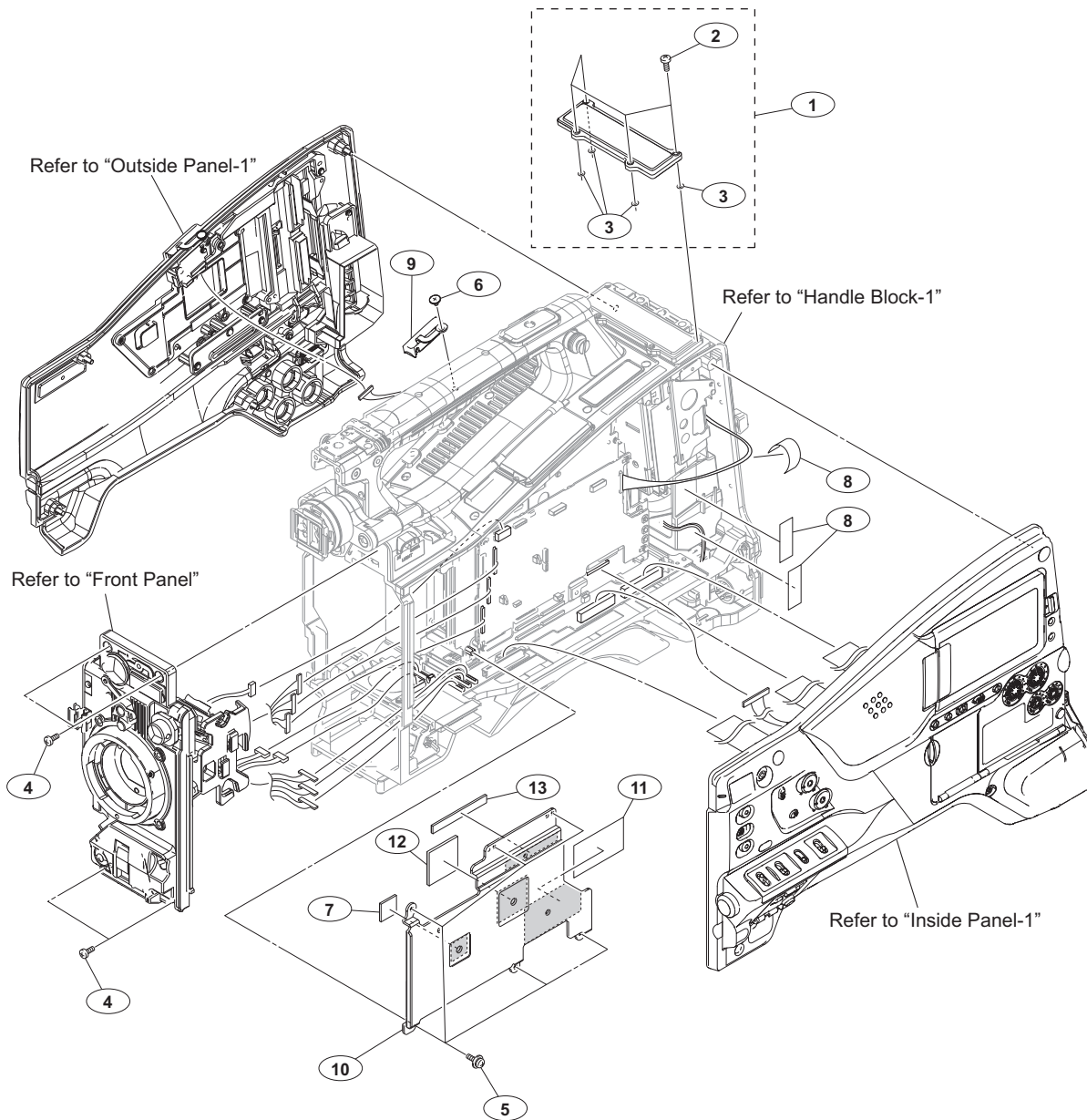
**Exmor**  
FULL HD 3CMOS

SERVICE MANUAL

1st Edition (Revised 1)

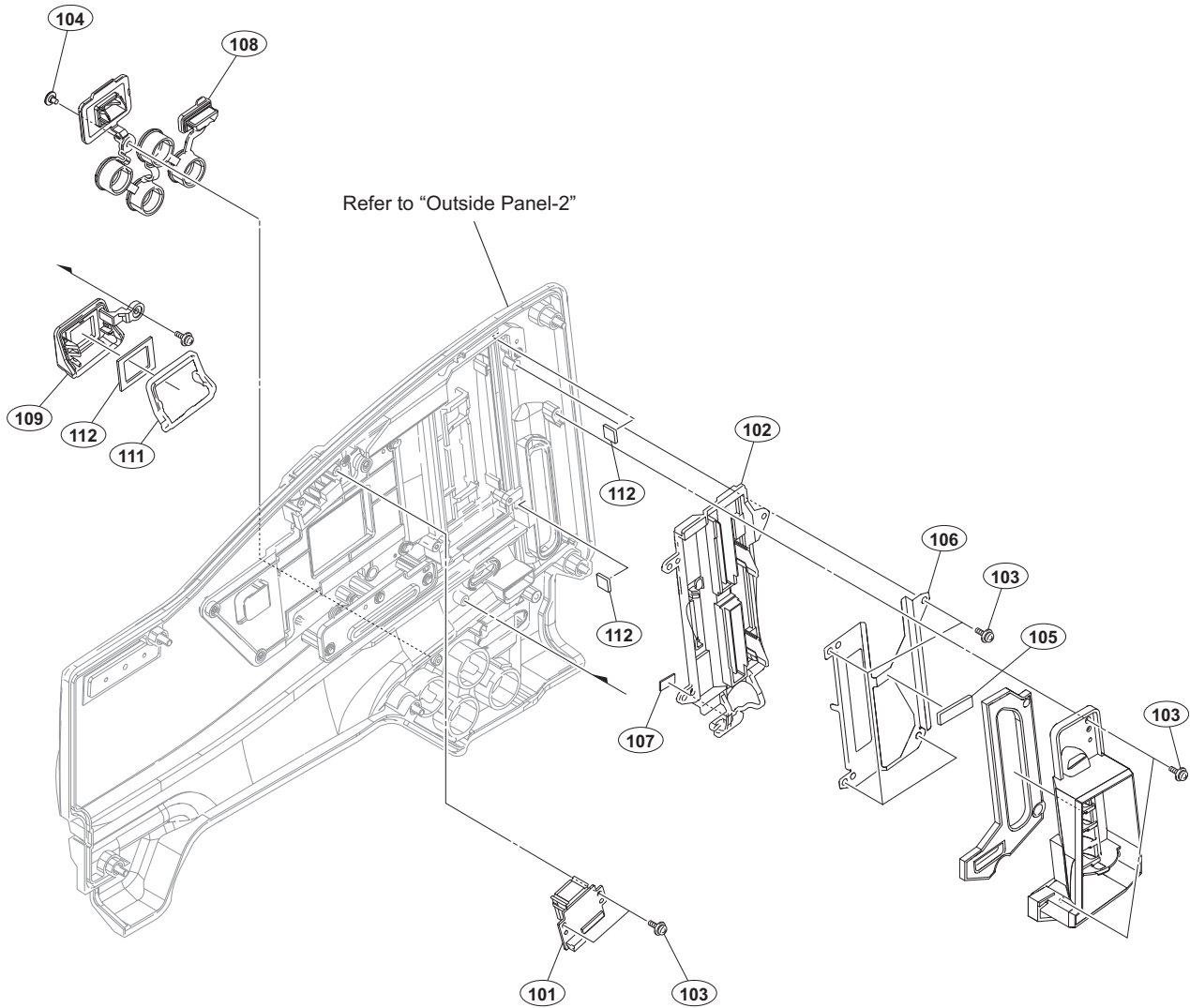
## 6-2. Exploded Views

### Overall



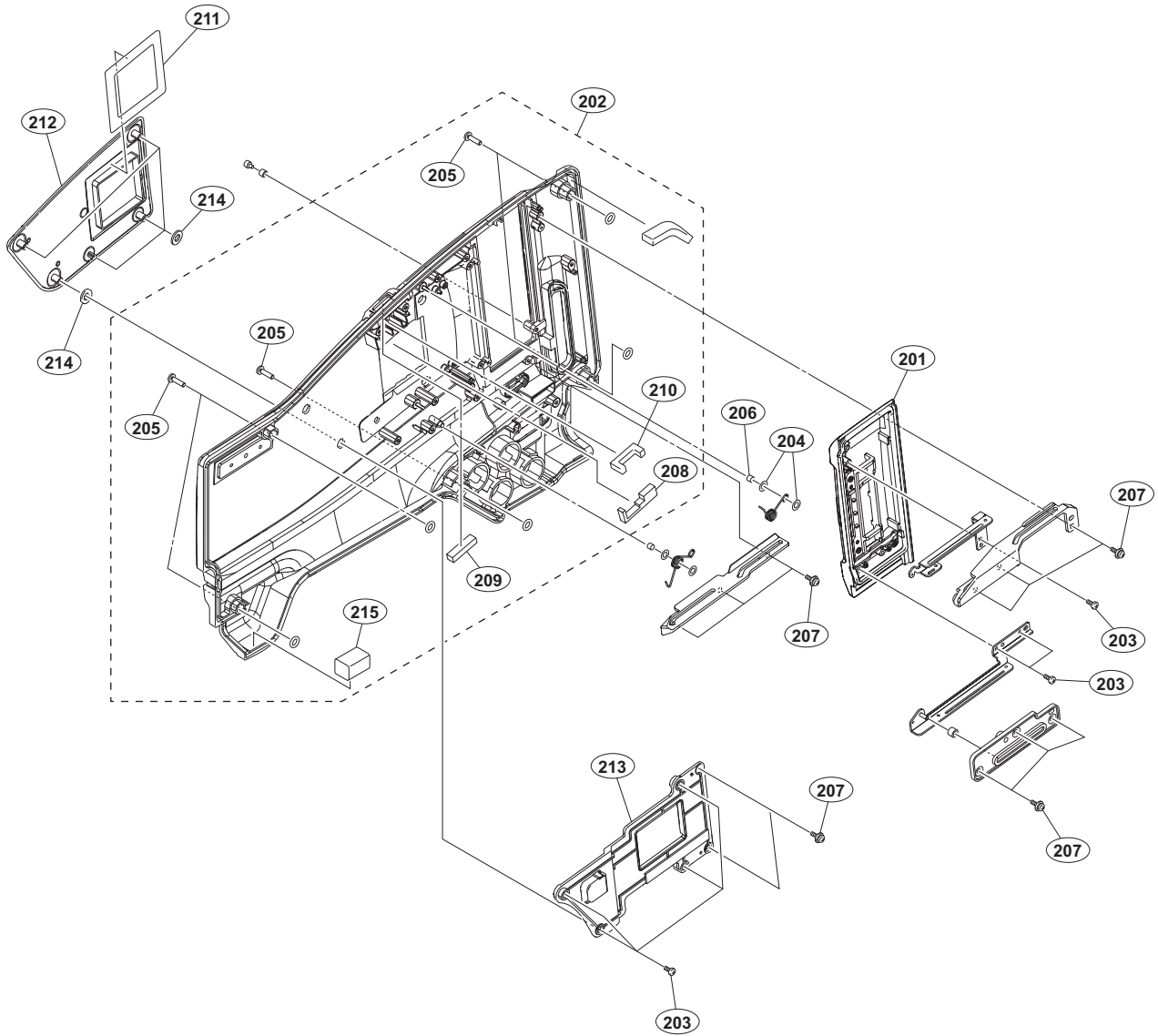
No.	Part No.	SP Description
1	A-2061-139-A	s PLATE (WRR) ASSY, BLIND
2	3-294-192-02	s +P M2.6X10
3	3-742-004-01	s RING, NYLON
4	3-742-074-13	s SCREW (+B 3X8)
5	3-855-938-01	s SCREW [+PSW 2x5]
6	3-965-077-03	s SCREW, SPECIAL (M2) [M2x2.4]
7	4-427-951-02	s RADIATION SHEET C
8	4-431-734-01	s TAPE AS
9	4-545-572-01	s COVER (NO DONGLE)
10	4-579-679-01	s HEAT SINK (30150), HPR-A
11	4-431-738-01	s TAPE 50
12	4-471-145-11	s SHEET, RADIATION (L)
13	4-477-224-11	s RADIATION SHEET 490615

# Outside Panel-1



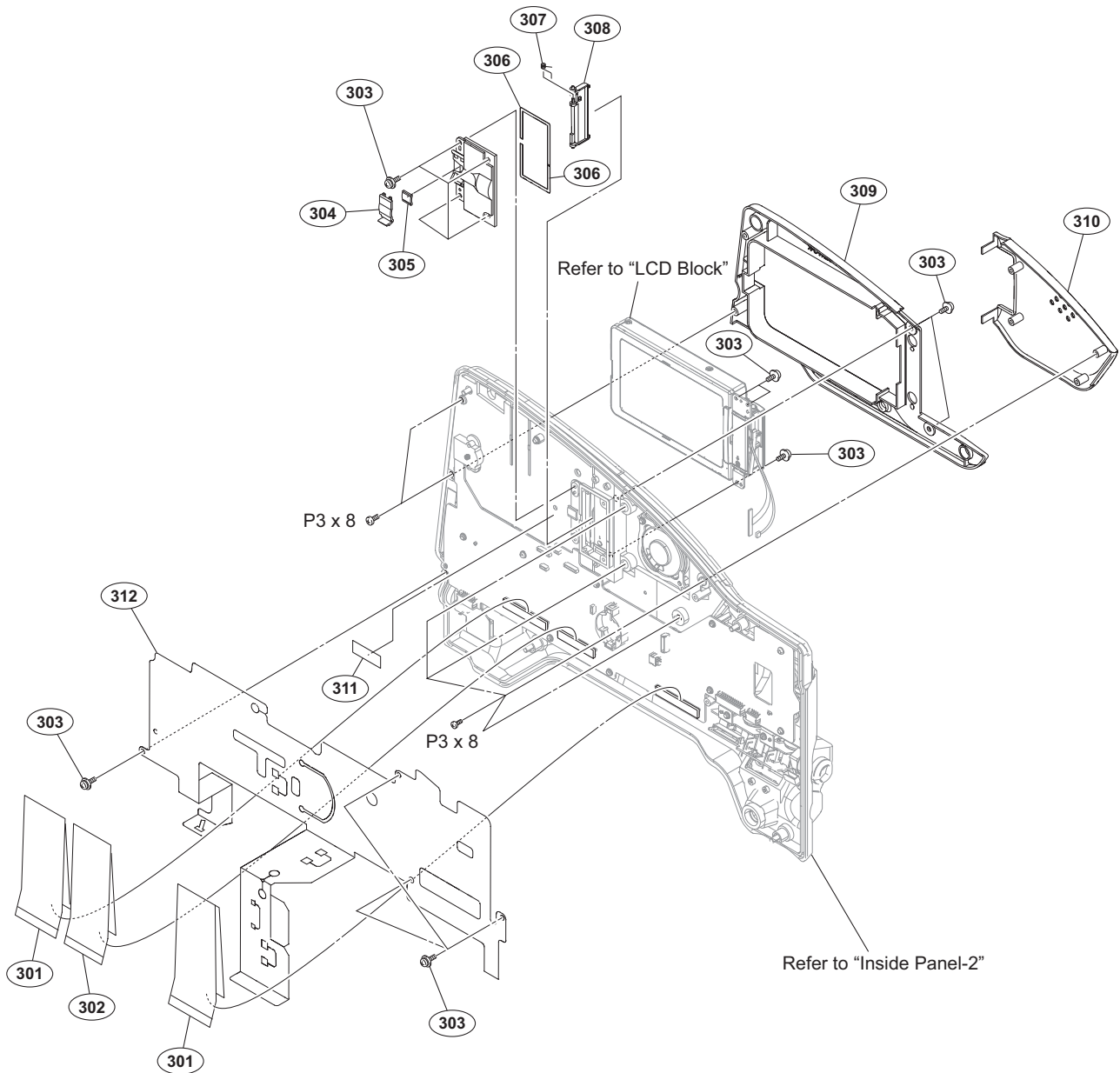
No.	Part No.	SP Description
101	A-2090-832-A	s MOUNTED CIRCUIT BOARD, CN-3808
102	X-2590-311-1	s ESCUTCHEON (EC) ASSY
103	3-855-938-01	s SCREW [+PSW 2x5]
104	3-965-077-03	s SCREW, SPECIAL (M2) [M2x2.4]
105	4-281-496-01	s GASKET , PRISM BLOCK
106	4-545-569-01	s PLATE, SLOT SHIELD
107	4-549-831-01	s SPACER (ESCUTCHEON)
108	4-579-682-01	s CAP (30150), BNC
109	4-579-689-01	s CABINET, LAN
110	4-579-690-01	s SEAL, LAN CABINET
111	4-579-691-01	s SEAL, LAN CONNECTOR
112	4-558-874-01	s STOPPER (OPEN) 2

## Outside Panel-2



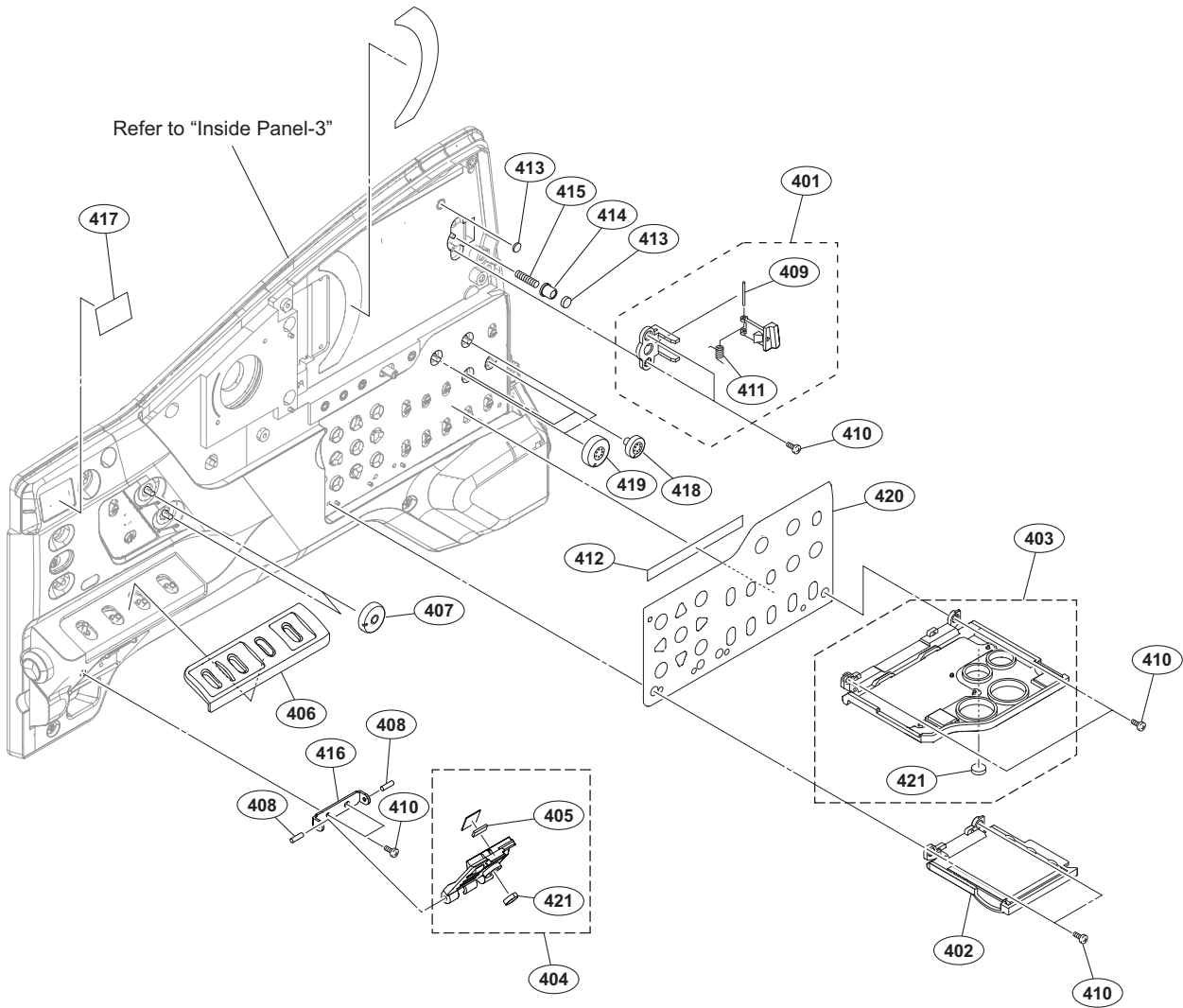
No.	Part No.	SP Description
201	A-2061-160-A s	LID ASSY, SLOT
202	A-2119-892-A s	PANEL SUB ASSY, OUTSIDE (RP)
203	3-080-206-21 s	SCREW, TAPPING, P2
204	3-223-464-01 s	SPACER (SLIDER)
205	3-603-680-02 s	STAINLESS SCREW +B3X12
206	3-657-841-31 s	SPACER (2X2.5)
207	3-855-938-01 s	SCREW [+PSW 2x5]
208	4-545-566-01 s	SHEET (USB), WP
209	4-562-622-01 s	SHEET (S), WP
210	4-562-623-01 s	SHEET (L), WP
211	4-579-677-01 s	SEAL (A), NFC COVER
212	4-579-684-01 s	COVER, NFC
213	4-579-685-01 s	HOLDER, NFC COVER
214	4-579-686-01 s	SEAL (B), NFC COVER
215	4-176-598-02 s	FORM (10X10X20), SHIELD

## Inside Panel-1



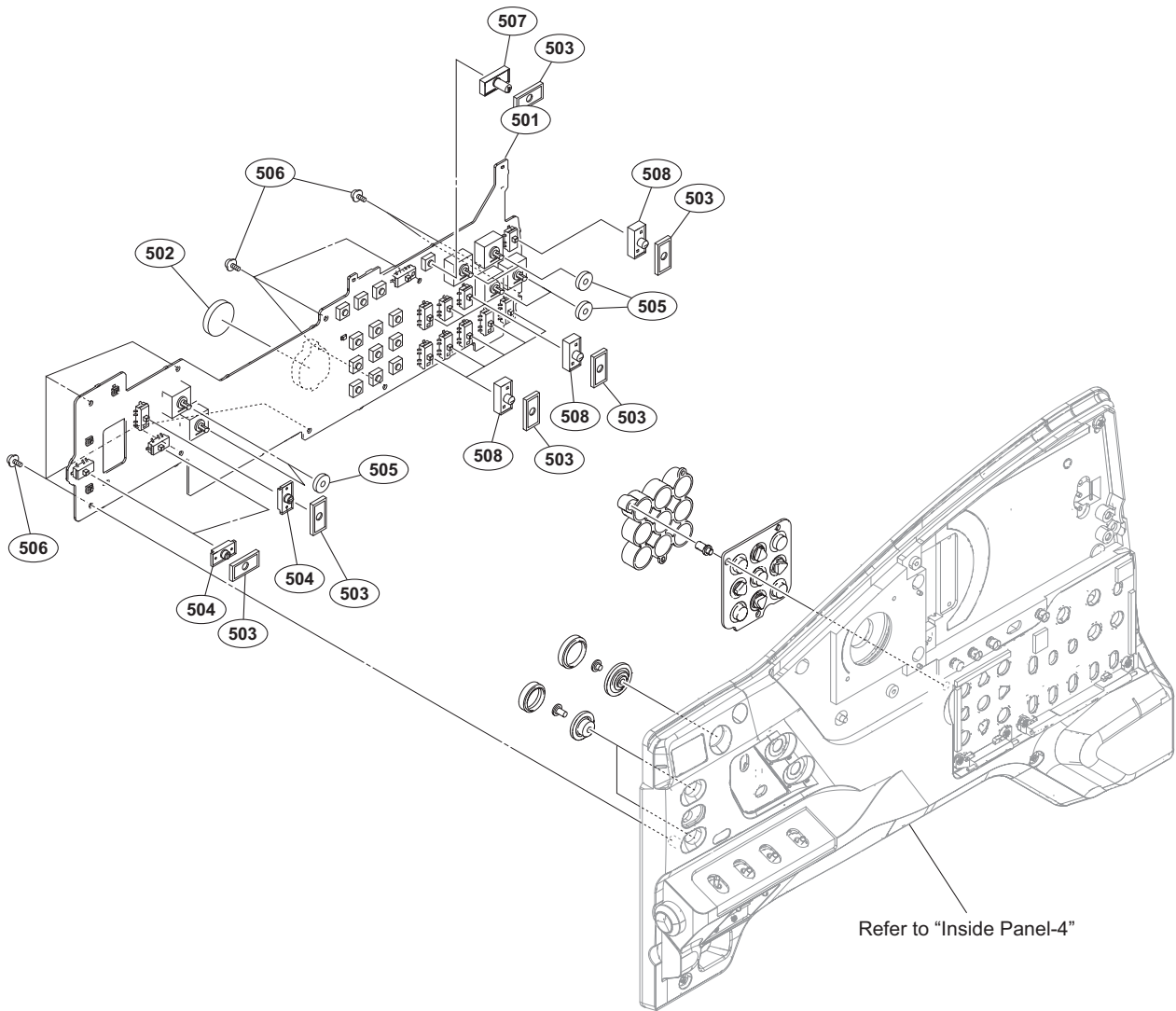
No.	Part No.	SP Description
301	1-837-293-11 s	CABLE, FLEXIBLE FLAT (30 CORE)
302	1-837-294-11 s	CABLE, FLEXIBLE FLAT (25 CORE)
303	3-855-938-01 s	SCREW [+PSW 2x5]
304	3-868-599-01 s	CLAMP HARNESS LCD
305	3-868-991-11 s	SHEEL HARNESS LCD
306	3-870-138-11 s	SHEET,HARNESS DROP PROTECTION
307	3-870-139-01 s	SPRING, HELICAL TORSION
308	4-264-413-01 s	PLATE BLIND, HINGE
309	4-264-414-11 s	PAD, INSIDE(R)
310	4-264-430-01 s	PAD(L), INSIDE
311	4-431-734-01 s	TAPE AS
312	4-545-555-01 s	INSULATING SHEET, FP
	7-685-146-11 s	SCREW +P 3X8 TYPE2 NON-SLIT

## Inside Panel-2



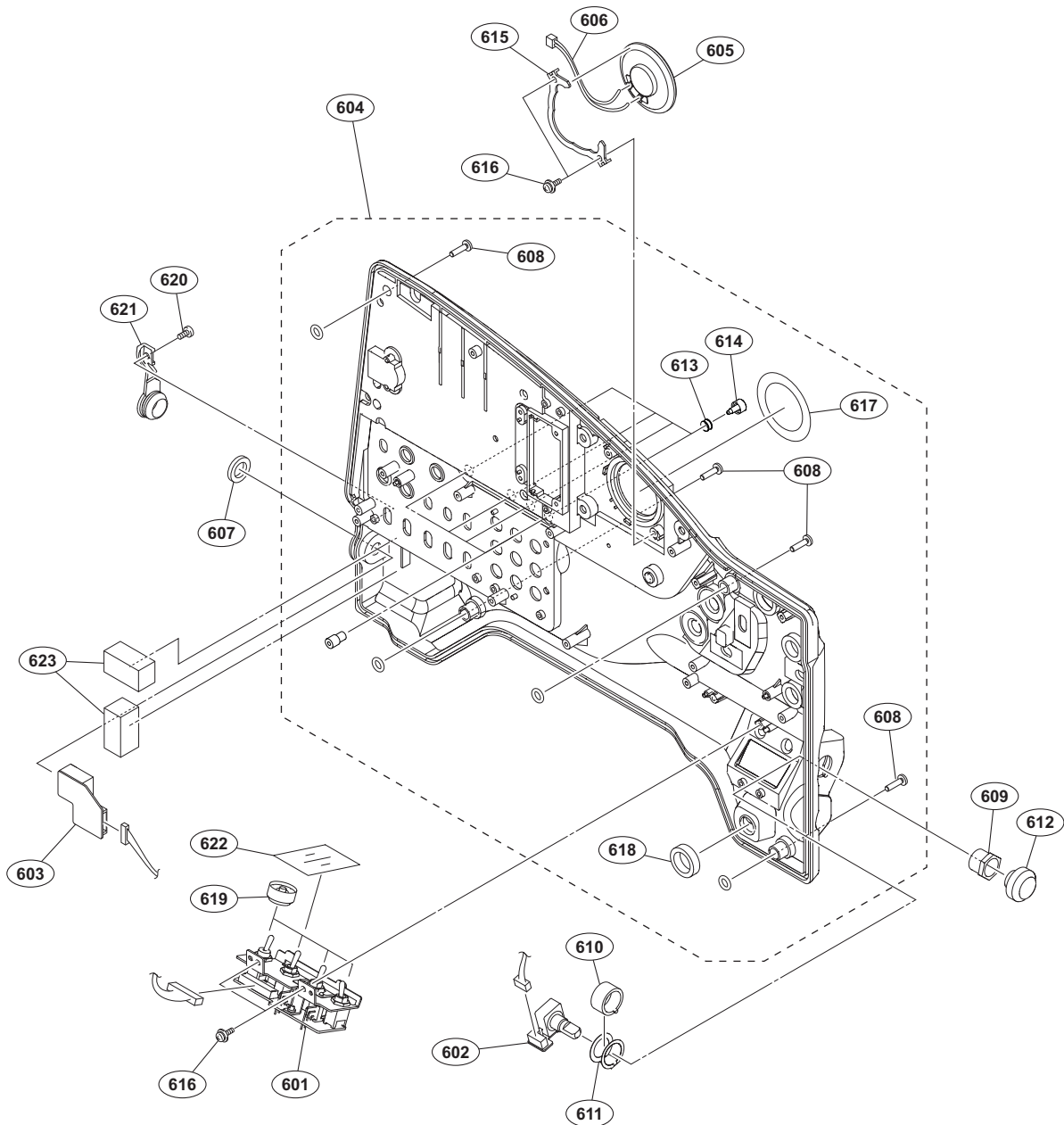
No.	Part No.	SP Description
401	A-1799-766-A	s LCD LOCK ASSY
402	A-2061-154-A	s DOOR (L) ASSY, SWITCH
403	A-2061-155-B	s DOOR (R) ASSY, SWITCH
404	A-2061-156-B	s DOOR ASSY, MENU
405	1-471-483-11	s MAGNET, LCD
406	3-629-768-52	s ORNAMENTAL PLATE(3), SW,CAMERA
407	3-680-219-03	s KNOB,VR
408	3-703-357-03	s PIN, PARALLEL (DIA. 1.6X6)
409	3-703-575-01	s PIN (DIA. 1.2), PARALLEL
410	3-719-381-02	s SCREW (M2X4)
411	3-869-457-01	s SPRING TORSION
412	3-879-092-01	s SHEET, SW PANEL
413	3-969-387-01	s FOOT, RUBBER
414	4-264-412-01	s LCD PANEL POPUP
415	4-264-416-01	s SPRING, COMPRESSION
416	4-467-510-01	s HINGE, MENU DOOR
417	4-468-152-01	s LABEL, FILTER INDICATION
418	4-472-861-01	s VR KNOB (S)
419	4-472-862-01	s VR KNOB (2)
420	4-562-472-02	s PLATE, SW ORNAMENTAL
421	4-644-879-11	s FOOT (B-2)

### Inside Panel-3



No.	Part No.	SP Description
501	A-2091-226-A	s MOUNTED CIRCUIT BOARD, FP-254
502	⚠ 1-528-174-73	s BATTERY, LITHIUM (CR2032 TYPE)
503	3-796-995-01	s DROP PROTECTION (SW)
504	3-796-996-03	s KNOB (A), SW
505	3-797-016-11	s CUSHION VOLUME AUDIO
506	3-855-938-01	s SCREW [+PSW 2x5]
507	4-472-863-01	s KNOB (B), SWITCH
508	4-472-864-01	s KNOB (C), SWITCH

## Inside Panel-4

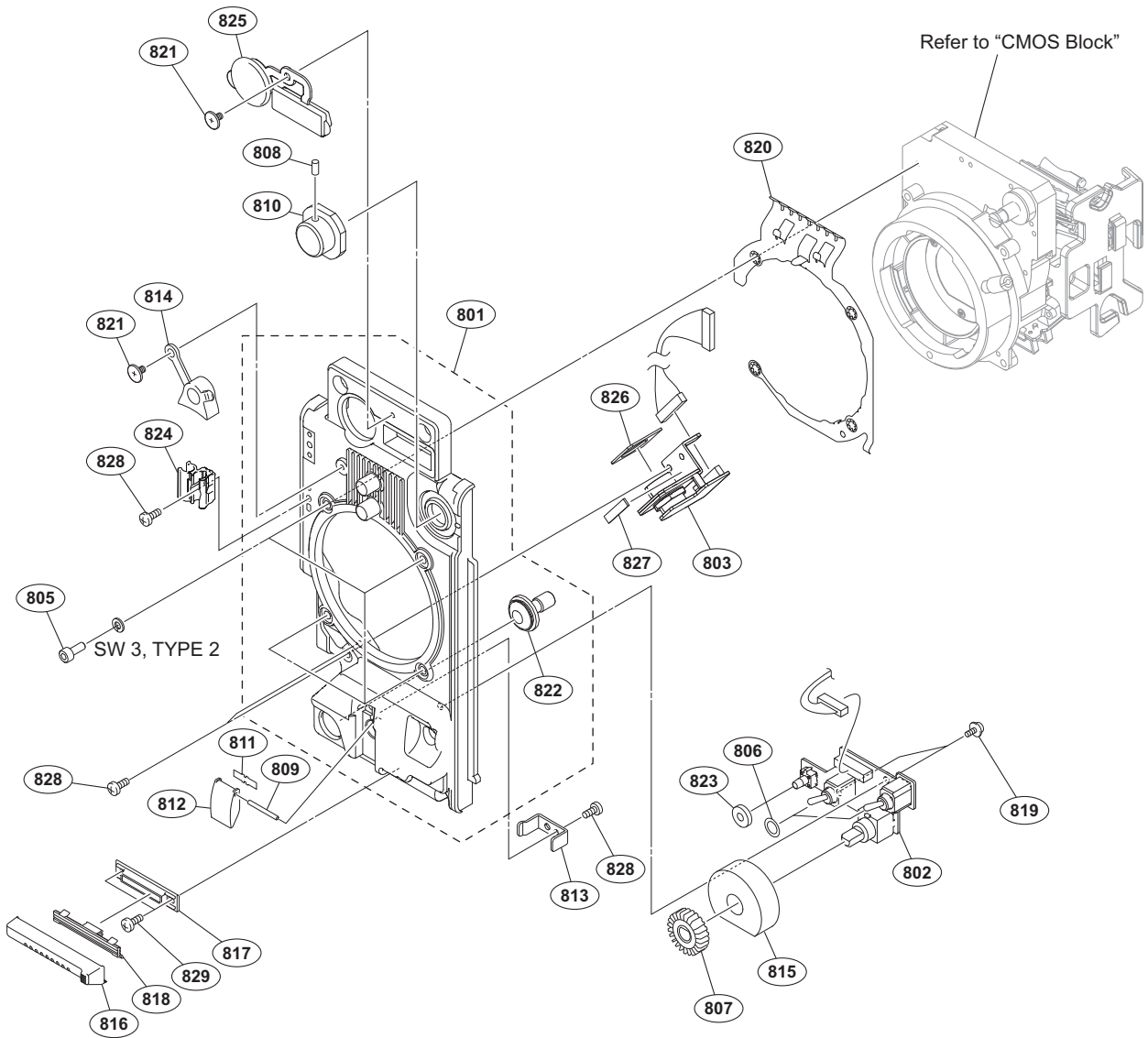


No.	Part No.	SP Description	No.	Part No.	SP Description
601	A-2090-837-A	s MOUNTED CIRCUIT BOARD, SW-1683	619	3-870-137-02	s CAP, DROP PROTECTION
602	A-2090-838-A	s MOUNTED CIRCUIT BOARD, ENC-167	620	3-965-077-03	s SCREW, SPECIAL (M2) [M2x2.4]
603	A-2090-840-A	s MOUNTED CIRCUIT BOARD, HP-176	621	4-168-991-01	s COVER, HEADPHONE JACK
604	A-2092-881-A	s PANEL SUB ASSY, INSIDE	622	4-588-072-01	s SW CONDUCTIVE SHEET (30150)
605	1-503-293-12	s SPEAKER	623	4-176-598-02	s FORM (10X10X20), SHIELD
606	1-967-045-12	s HARNESS, SUB (SPEAKER)			
607	3-061-234-01	s NUT (M6X0.5)			
608	3-603-680-02	s STAINLESS SCREW +B3X12			
609	3-629-446-04	s SLEEVE (ENC2)			
610	3-629-447-03	o SLEEVE (ENC1)			
611	3-647-917-02	s PLATE, EARTH			
612	3-692-111-02	s KNOB, RE			
613	3-724-758-02	s RUBBER (PUSH), DROP PROTECTION			
614	3-797-073-01	s RES, SW PUSH			
615	3-797-084-01	s HOLDER SPEAKER			
616	3-855-938-01	s SCREW [+PSW 2x5]			
617	3-868-597-11	s SHEET (SP), DROP PROTECTION			
618	3-870-098-11	s CUSHION, POWER SWITCH			



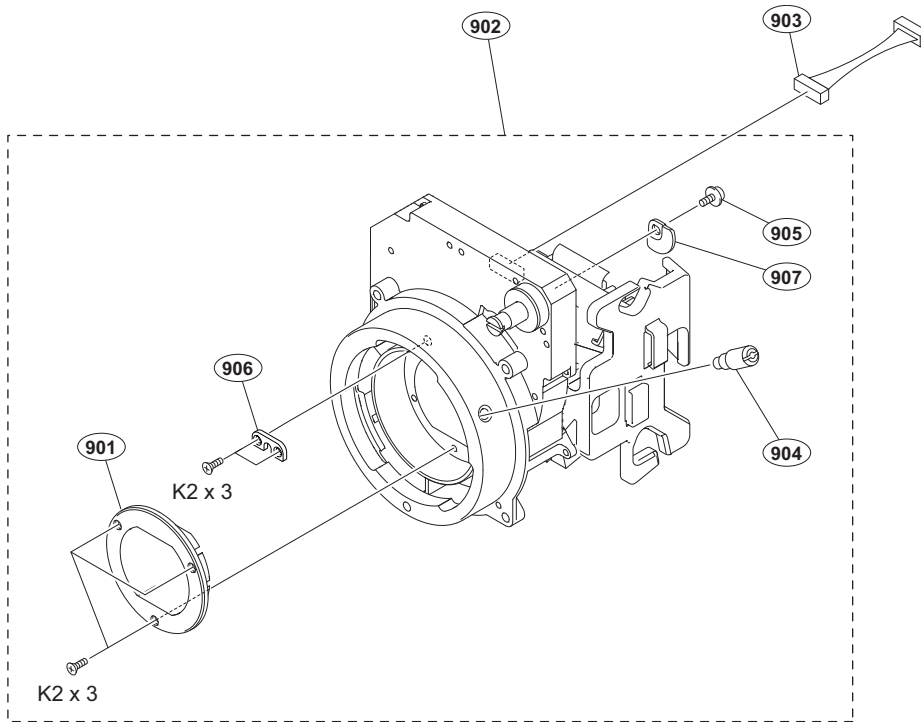


# Front Block



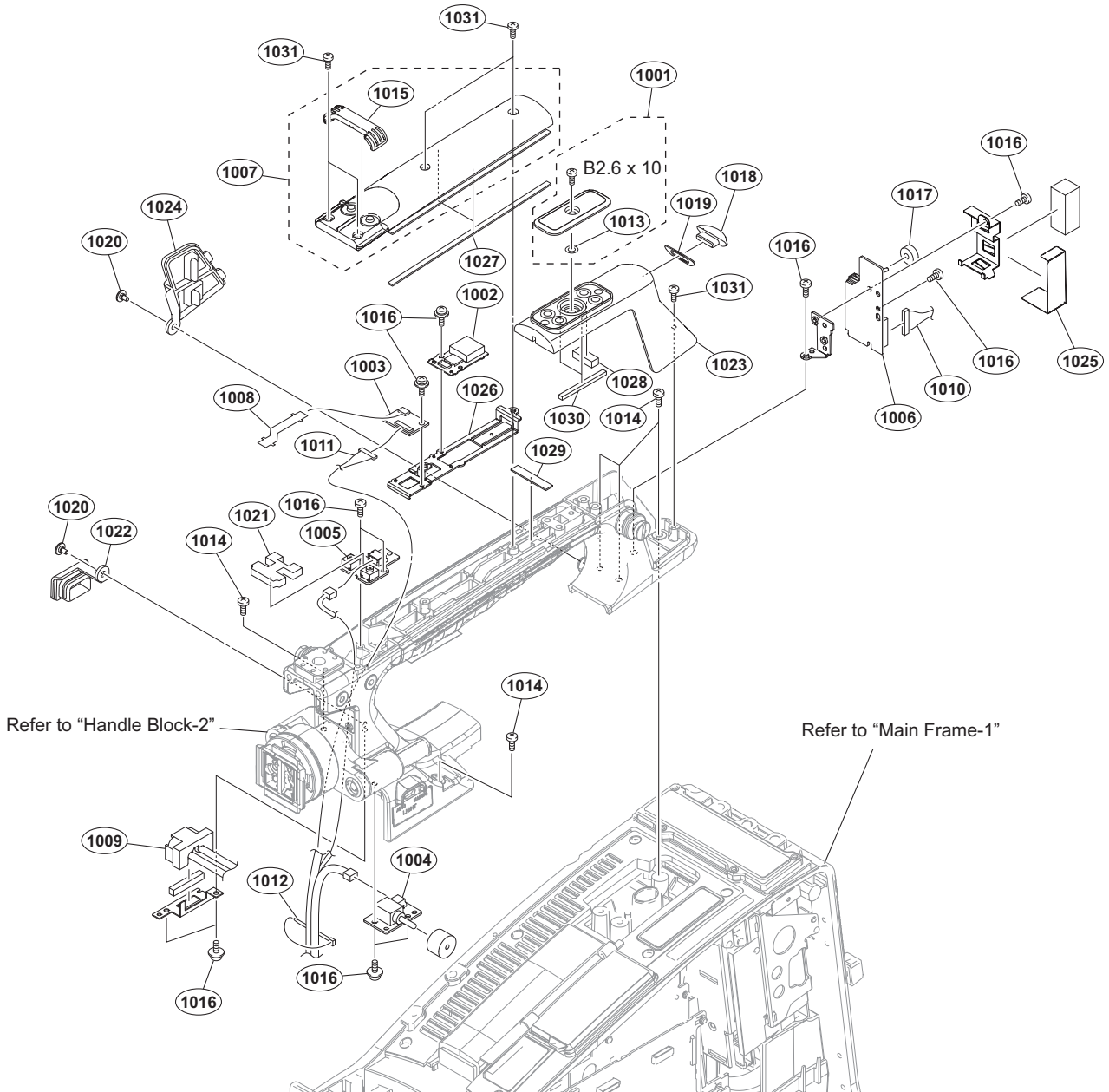
No.	Part No.	SP Description	No.	Part No.	SP Description
801	A-2061-145-A	s PANEL SUB ASSY, FRONT	825	4-169-085-02	s CAP, CONNECTOR
802	A-2090-836-A	s MOUNTED CIRCUIT BOARD, SW-1682	826	4-468-156-01	s CUSHION, DROPPROTECTION CONNEC
803	A-2090-839-A	s MOUNTED CIRCUIT BOARD, CN-3812	827	4-468-157-01	s CUSHION, DROP PROTECTION 2
805	2-623-773-11	s BOLT (M3X8), STAINLESS	828	4-559-446-02	s SCREW, +P2.6X5 NEW TRUSTER
806	3-312-823-02	s PACKING, KNOB	829	4-654-273-03	s SCREW, NEW TRUSTER (M2) [B2x5]
807	3-624-135-01	s KNOB, VR (AUDIO)			
808	3-701-505-01	s SET SCREW, DOUBLE POINT 3X3			
809	3-703-357-05	s PIN, PARALLEL (DIA. 1.6X8)			
810	3-710-054-01	s KNOB, FILTER			
811	3-742-066-11	o SPRING, SHUTTER			
812	3-742-067-06	s LID, SHUTTER			
813	3-796-965-01	s BRACKET, SHUTTER			
814	3-796-982-03	s HOLDER, LENS MOUNT			
815	3-797-080-01	s DROP PROTECTION (MIC VR)			
816	3-854-361-01	s GUARD VOLUME FRONT			
817	3-854-362-01	s HOLDER GUARD			
818	3-854-363-01	s SLIDER			
819	3-855-938-01	s SCREW [+PSW 2x5]			
820	3-879-494-02	s FINGER (LM), SHIELD			
821	3-965-077-03	s SCREW, SPECIAL (M2) [M2x2.4]			
822	3-986-632-02	s BUTTON, VTR START			
823	3-990-897-11	s CUSHION REC (SW)			
824	4-138-678-01	s CLAMP, CABLE			

# CMOS Block



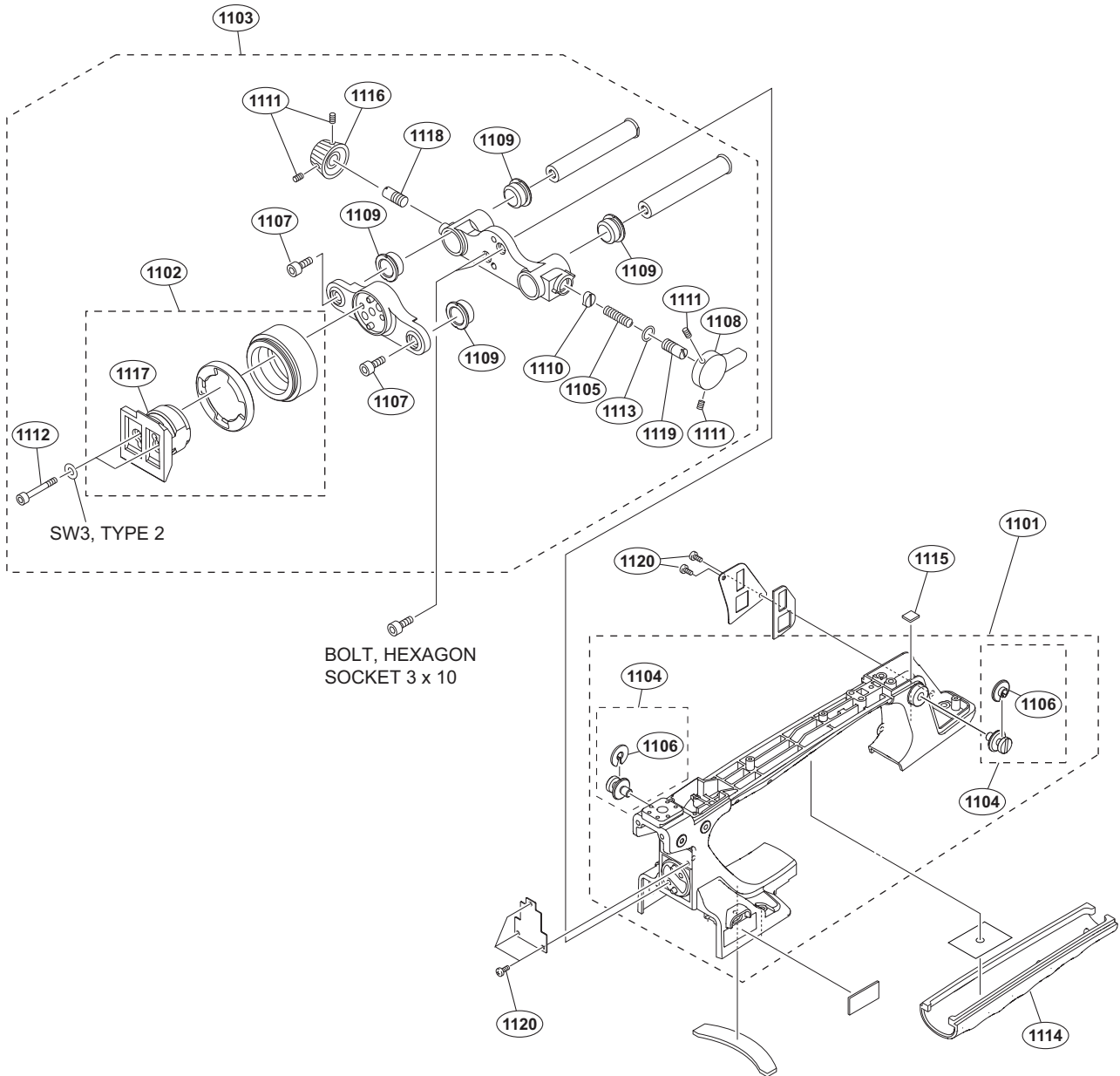
No.	Part No.	SP Description
901	A-2076-171-A s	OLPF ASSY
902	A-2119-891-A s	CMOS BLOCK ASSY (X400) (RP)
903	1-967-049-11 s	HARNESS, SUB (SE)
904	3-678-629-04 s	LEVER, MOUNT
905	3-729-076-11 s	SCREW (+B) (2X4)
906	3-776-897-02 s	GUIDE PLATE
907	3-854-378-01 s	PLATE, FILTER ID
	7-627-452-18 s	SCREW, PRECISION +K 2X3

# Handle Block-1



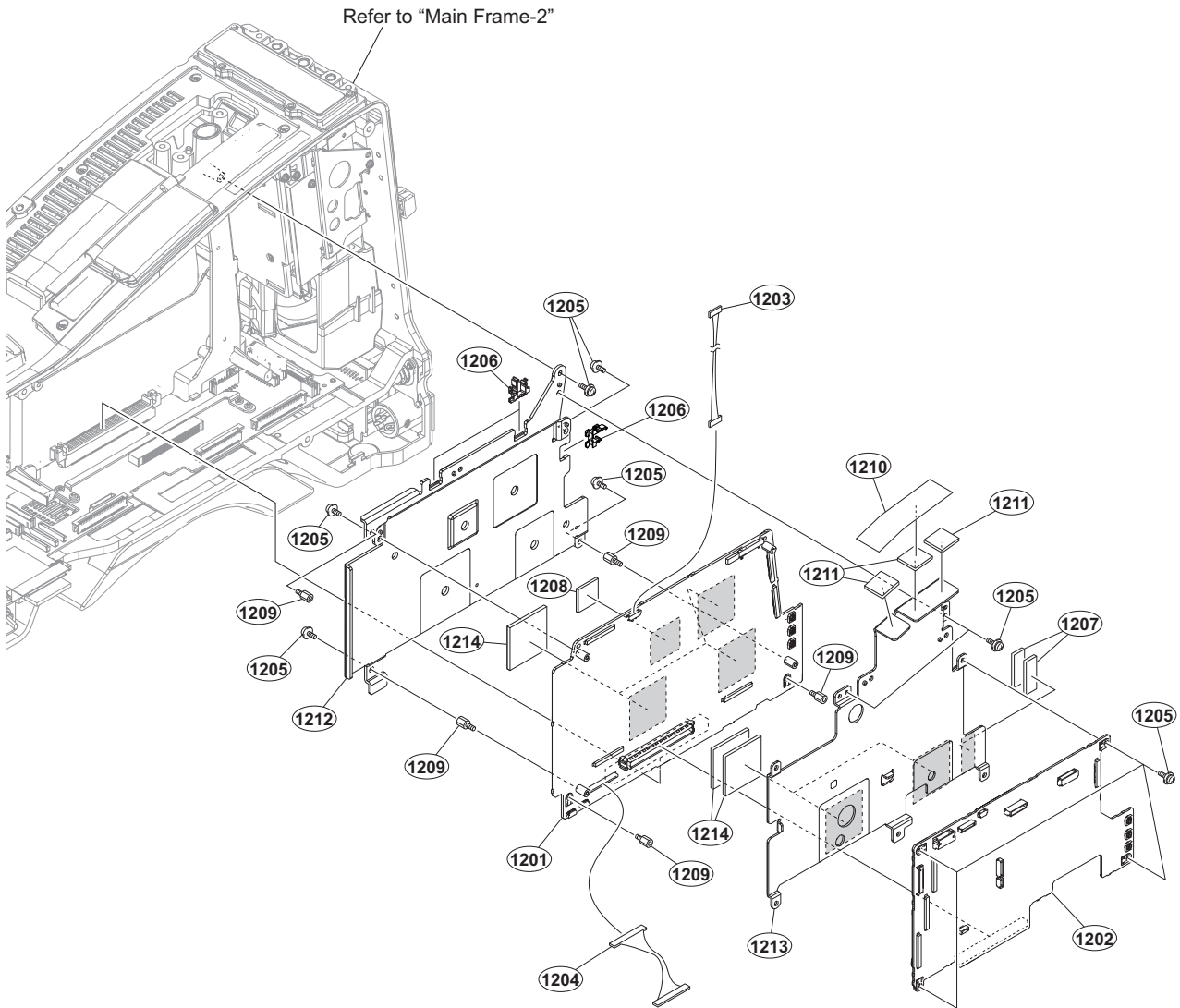
No.	Part No.	SP Description	No.	Part No.	SP Description
1001	A-1106-989-A	s COVER ASSY, SHOE	1020	3-965-077-03	s SCREW, SPECIAL (M2) [M2x2.4]
1002	A-2059-048-A	s MOUNTED CIRCUIT BOARD, GP-1019	1021	4-000-665-01	s SEALING (B), HANDLE
1003	A-2090-829-A	s MOUNTED CIRCUIT BOARD, CN-3809	1022	4-168-996-01	s CAP (LIGHT CONNECTOR)
1004	A-2090-850-A	s MOUNTED CIRCUIT BOARD, SW-1684	1023	4-168-998-02	s COVER, TALLY
1005	A-2090-851-A	s MOUNTED CIRCUIT BOARD, SW-1685	1024	4-264-451-01	s CAP (USB2)
1006	A-2090-854-A	s MOUNTED CIRCUIT BOARD, LED-532	1025	4-545-528-02	s SHEET (LED529), PROTECTION
1007	X-2541-837-5	s COVER ASSY, HANDLE (TOP)	1026	4-545-545-01	s BRACKET (GPS)
1008	1-893-019-11	s FP-2231 FLEXIBLE PWB	1027	4-549-672-02	s CUSHION (HTC A)
1009	1-967-028-11	s HARNESS, SUB (LIGHT)	1028	4-549-673-01	s CUSHION (TAC)
1010	1-967-783-11	s HARNESS (COAXIAL CABLE)	1029	4-549-674-01	s CUSHION (H MID)
1011	1-970-443-11	s SUB HARNESS (GPS)	1030	4-549-937-01	s CUSHION (HTC B)
1012	3-337-402-01	o BAND, BINDING	1031	4-654-273-03	s SCREW, NEW TRUSTER (M2) [B2x5]
1013	3-742-004-01	s RING, NYLON		7-621-775-50	s SCREW +B 2.6X10
1014	3-742-074-13	s SCREW (+B 3X8)			
1015	3-805-990-01	s HANDLE TOP COVER LID			
1016	3-855-938-01	s SCREW [+PSW 2x5]			
1017	3-868-631-01	s CUSHION, DROP PROTECTION			
1018	3-870-241-02	s COVER, LAMP			
1019	3-870-243-02	s SEAL, LAMP COVER			

## Handle Block-2



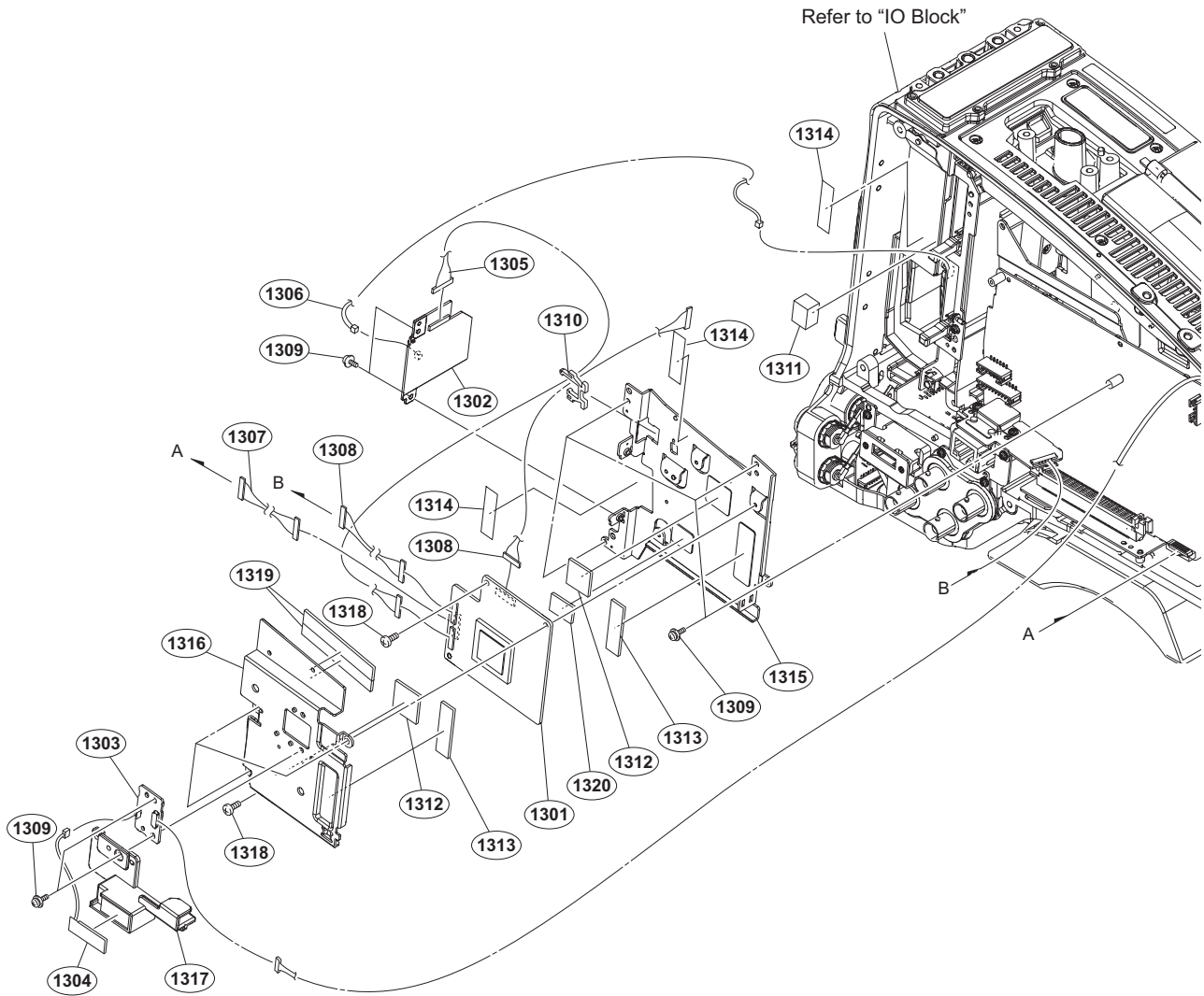
No.	Part No.	SP Description	No.	Part No.	SP Description
1101	A-2061-149-A	s HANDLE SUB ASSY	1120	4-654-273-03	s SCREW, NEW TRUSTER (M2) [B2x5]
1102	A-2065-043-A	s SHOE ASSY,VF			
1103	A-2065-046-B	s SLIDE ASSY,VF			
1104	X-3710-037-1	s SUSPENSION ASSY (C)		7-623-208-22	s SW 3,TYPE 2
1105	3-612-822-01	s SPRING,COMPRESSION		7-683-405-04	s BOLT,HEXAGON SOCKET 3X10
1106	3-654-615-02	s COLLAR, SUSPENSION			
1107	3-657-705-91	s BOLT (M4X8), HEXAGON HOLE			
1108	3-673-046-03	s LEVER, LOCK			
1109	3-679-684-01	o REST,ARM			
1110	3-679-702-01	o CUSHION, STOPPER			
1111	3-701-507-01	s SET SCREW, DOUBLE POINT, (M3X5)			
1112	3-711-765-01	s BOLT (M3), HEXAGON SOCKET			
1113	3-895-622-01	s RING (DIA. 5), O			
1114	4-168-997-02	s GRIP			
1115	4-446-005-12	s GASKET MAIN L			
1116	4-549-633-01	s KNOB, LOCK			
1117	4-558-057-01	s SHOE,SLIDE			
1118	4-558-190-01	s LOCK,SCREW			
1119	4-559-455-01	s PIN, STOPPER			

# Main Frame-1



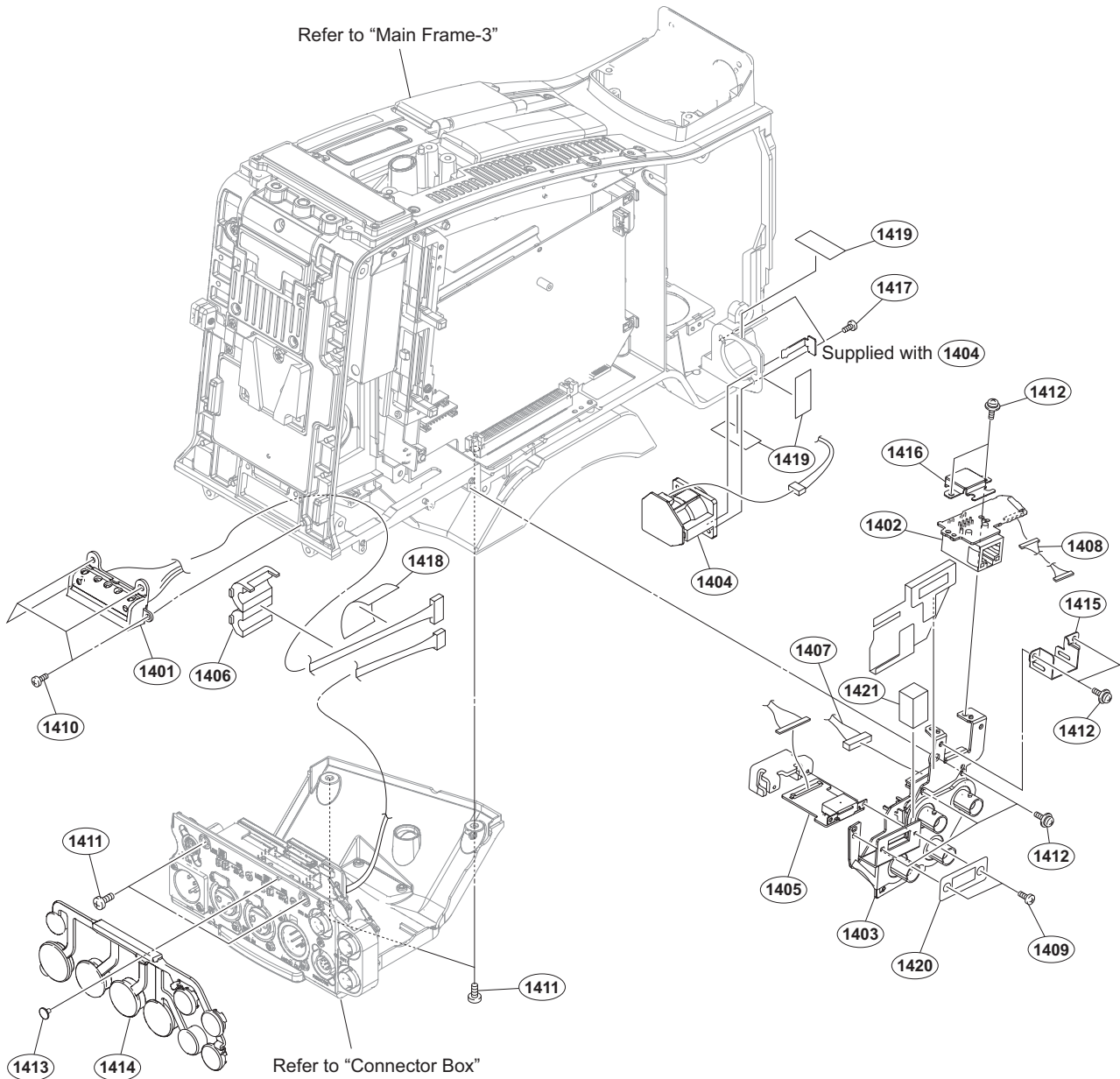
No.	Part No.	SP Description
1201	A-2091-222-A	s MOUNTED CIRCUIT BOARD, DPR-375
1202	A-2091-225-A	s MOUNTED CIRCUIT BOARD, HPR-61
1203	1-971-154-11	s HARNESS, SUB (DPR-NET-8P)
1204	1-971-156-11	s HARNESS (HPR-DPR-30P)
1205	3-855-938-01	s SCREW [+PSW 2x5]
1206	4-137-926-01	s SADDLE (LES-0505), EDGE
1207	4-427-950-02	s RADIATION SHEET B
1208	4-427-951-02	s RADIATION SHEET C
1209	4-545-526-01	s SPACER (BSB-2005_5E)
1210	4-545-529-01	s SHEET (HPR-B), SLIDE
1211	4-558-873-01	s SHEET (2.5 (12X12)), RADIATION
1212	4-579-678-01	s HEAT SINK (30150), DPR-B
1213	4-579-680-01	s HEAT SINK (30150), HPR-B
1214	4-471-145-11	s SHEET, RADIATION (L)

## Main Frame-2



No.	Part No.	SP Description
1301	A-2063-702-B	s BOARD, WM COMPLETE PC (RP)
1302	A-2090-828-A	s MOUNTED CIRCUIT BOARD, SD-64
1303	A-2090-841-A	s MOUNTED CIRCUIT BOARD, NET-27
1304	A-2092-878-A	s ANTENNA ASSY
1305	1-963-577-61	s HARNESS (COAXIAL CABLE)
1306	1-970-442-11	s SUB HARNESS (EC-SD)
1307	1-970-444-11	s SUB HARNESS (WA_POWER2)
1308	1-970-445-11	s HARNESS (CN-WA)
1309	3-855-938-01	s SCREW [+PSW 2x5]
1310	4-137-926-01	s SADDLE (LES-0505), EDGE
1311	4-284-134-11	s GASKET (B)
1312	4-427-951-02	s RADIATION SHEET C
1313	4-427-952-02	s RADIATION SHEET D
1314	4-431-734-01	s TAPE AS
1315	4-545-534-01	s BRACKET (WA)
1316	4-579-681-01	s HEAT SINK (30150), WA
1317	4-579-683-01	s HOLDER, NFC ANTENNA
1318	4-654-273-03	s SCREW, NEW TRUSTER (M2) [B2x5]
1319	4-477-224-11	s RADIATION SHEET 490615
1320	4-477-225-11	s RADIATION SHEET 081015

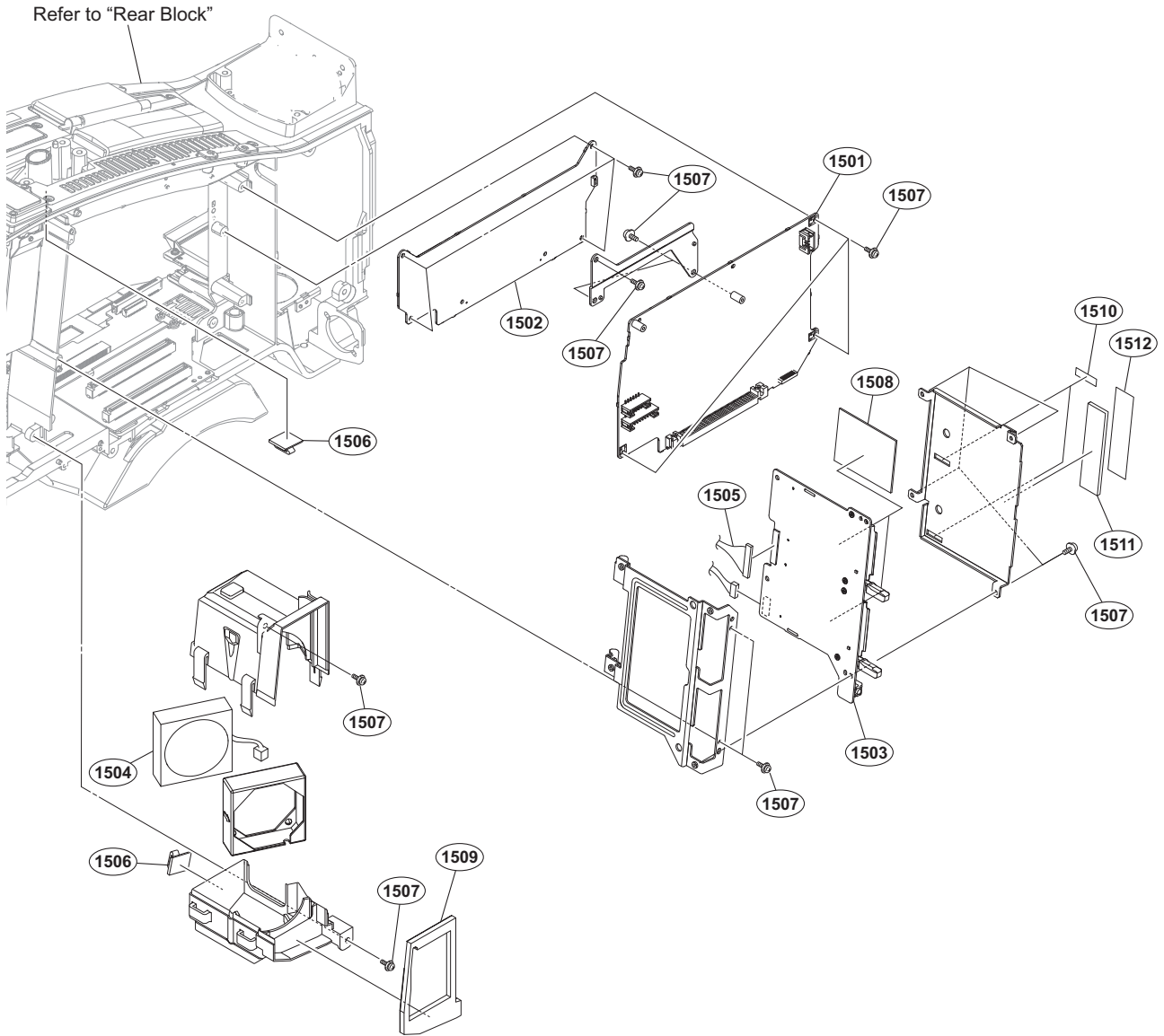
# IO Block



No.	Part No.	SP Description	No.	Part No.	SP Description
1401	A-1968-119-A	s BATTERY HARNESS ASSY	1420	4-468-129-01	s CUSHION (HDMI)
1402	A-2091-229-A	s MOUNTED CIRCUIT BOARD, CN-3813	1421	4-468-534-02	s FOAM (10X5), SHIELD
1403	A-2090-847-A	s MOUNTED CIRCUIT BOARD, IO-278			
1404	A-2090-852-A	s MOUNTED CIRCUIT BOARD, CN-3810			
1405	A-2091-228-A	s MOUNTED CIRCUIT BOARD, DIF-245			
1406	1-500-082-11	o CLAMP, SLEEVE FERRITE			
1407	1-970-440-11	s SUB HARNESS (IO)			
1408	1-971-155-11	s HARNESS (CN3808-CN3813-20P)			
1409	2-635-562-31	s SCREW(M1.7) [P 1.7x4]			
1410	3-694-181-03	s TYPE1,AROCK PRECISION +P2.6X5			
1411	3-742-074-13	s SCREW (+B 3X8)			
1412	3-855-938-01	s SCREW [+PSW 2x5]			
1413	3-965-077-03	s SCREW, SPECIAL (M2) [M2x2.4]			
1414	4-545-527-01	s CAP, CN, REAR			
1415	4-579-687-01	s PLATE, LAN ELECTROSTATIC			
1416	4-579-688-01	s PLATE, LAN SHIELD			
1417	4-674-315-01	s SCREW (M2.6X6)			
1418	4-431-738-01	s TAPE 50			
1419	4-176-606-11	s TAPE (MIC IN)			

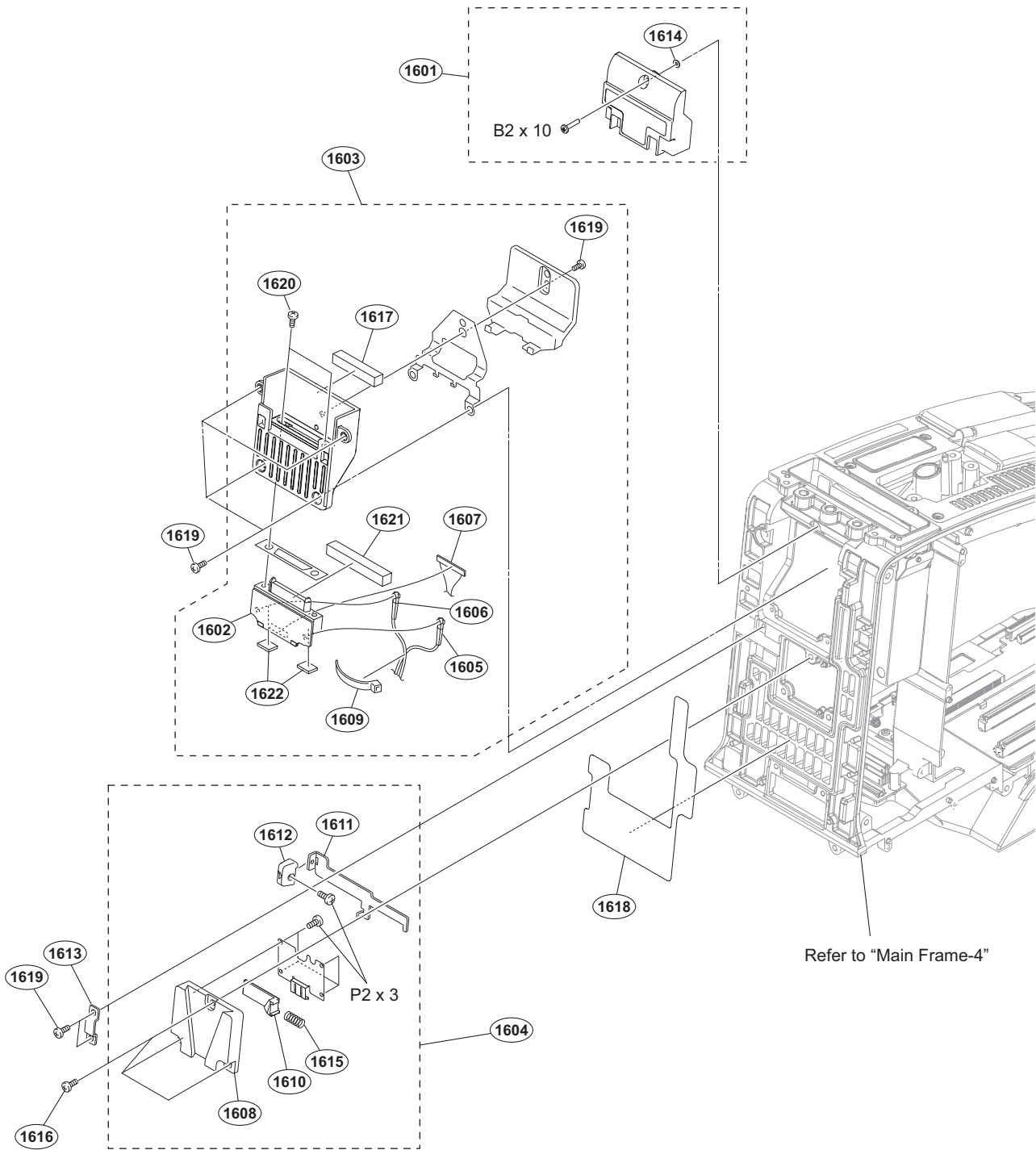


## Main Frame-3



No.	Part No.	SP Description
1501	A-2091-223-A	s MOUNTED CIRCUIT BOARD, RE-336
1502	A-2091-224-A	s MOUNTED CIRCUIT BOARD, AU-373
1503	A-2091-227-A	s MOUNTED CIRCUIT BOARD, EC-86
1504	△ 1-855-024-11	s FAN, DC (40 SQUARE)
1505	1-967-037-11	s HARNESS (DPR-EC)
1506	3-257-200-01	s CLAMP, CORD
1507	3-855-938-01	s SCREW [+PSW 2x5]
1508	4-165-223-01	o SHEET (4535T1), RADIATION
1509	4-468-131-01	s CUSHION, JOINT
1510	4-468-147-01	s SHEET (EC)
1511	4-545-551-01	s SHEET (SXS-MF), RADIATION
1512	4-545-552-01	s SHEET (SXS-MF), SLIDE

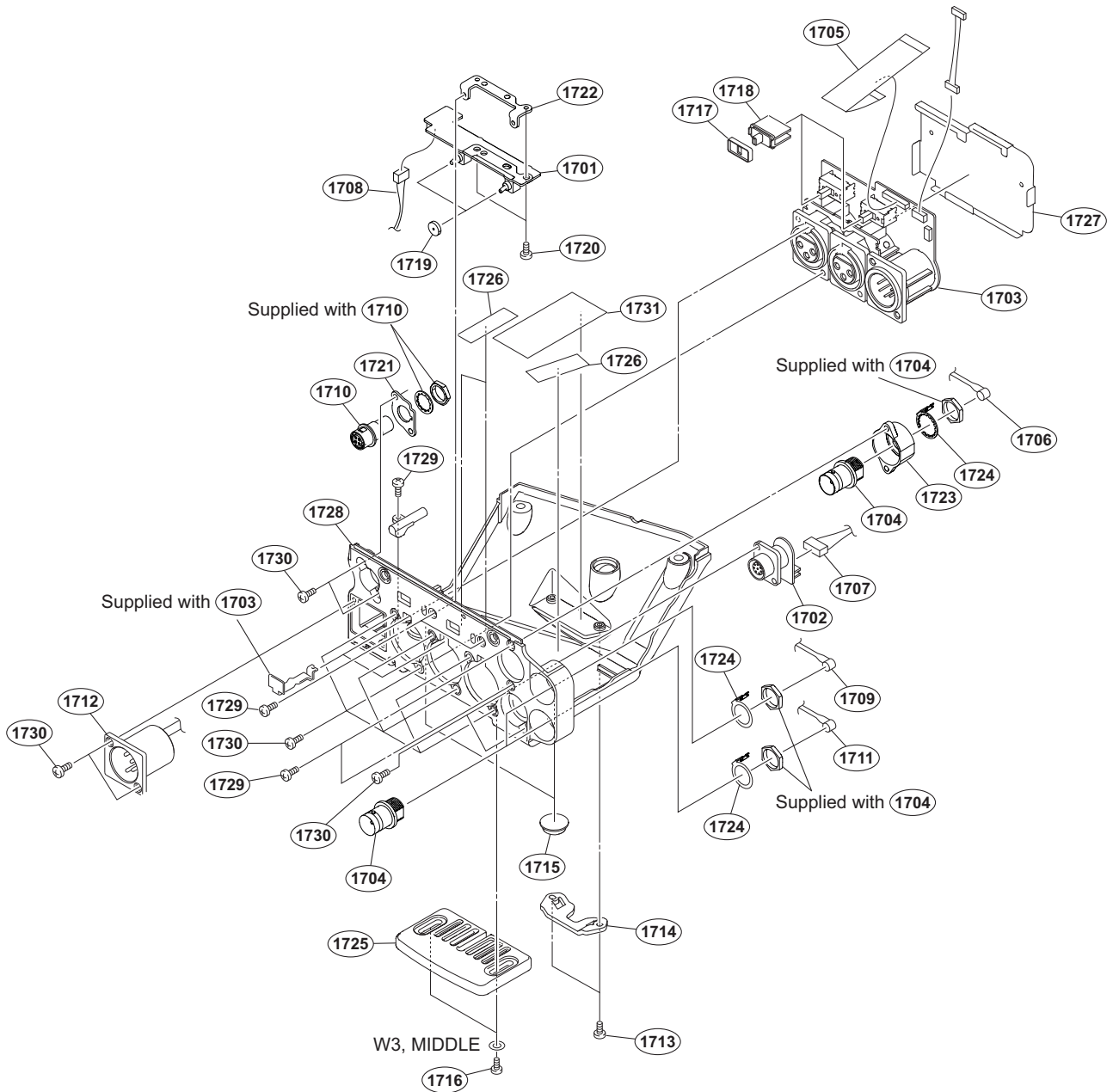
# Rear Block



No.	Part No.	SP Description
1601	A-1787-923-A	s 50P COVER ASSY
1602	A-2090-825-A	s MOUNTED CIRCUIT BOARD, CI-53
1603	A-2093-023-A	s 50P CN ASSY
1604	A-8279-091-D	s MOUNT ASSY,V
1605	1-829-055-11	s CABLE ASSEMBLY, COAXIAL [White]
1606	1-830-737-11	s CABLE ASSEMBLY, COAXIAL [Black]
1607	1-967-537-11	s HARNESS (CI)
1608	3-616-721-02	o MOUNT (2),V
1609	3-671-893-01	s CLAMP (LOW TYPE)
1610	3-679-687-02	s LOCK,SLIDE
1611	3-679-688-03	s LEVER,RELEASE
1612	3-680-952-02	o KNOB,RELEASE LEVER
1613	3-697-119-03	s RETAINER

No.	Part No.	SP Description
1614	3-701-436-21	s WASHER, POLYETHYLENE
1615	3-704-964-01	s SPRING,COMPRESSION
1616	3-742-074-13	s SCREW (+B 3X8)
1617	4-129-038-01	s FOAM (MOF), SHIELD
1618	4-468-130-01	s SHEET, REAR
1619	4-654-273-03	s SCREW, NEW TRUSTER (M2) [B2x5]
1620	4-674-315-01	s SCREW (M2.6X6)
1621	4-264-190-01	s CUSHION (CI)
1622	4-268-315-02	s FOAM (5X1), SHIELD
	7-621-772-50	s SCREW +B 2X10
	7-627-553-38	s SCREW,PRECISION +P 2X3

# Connector Box

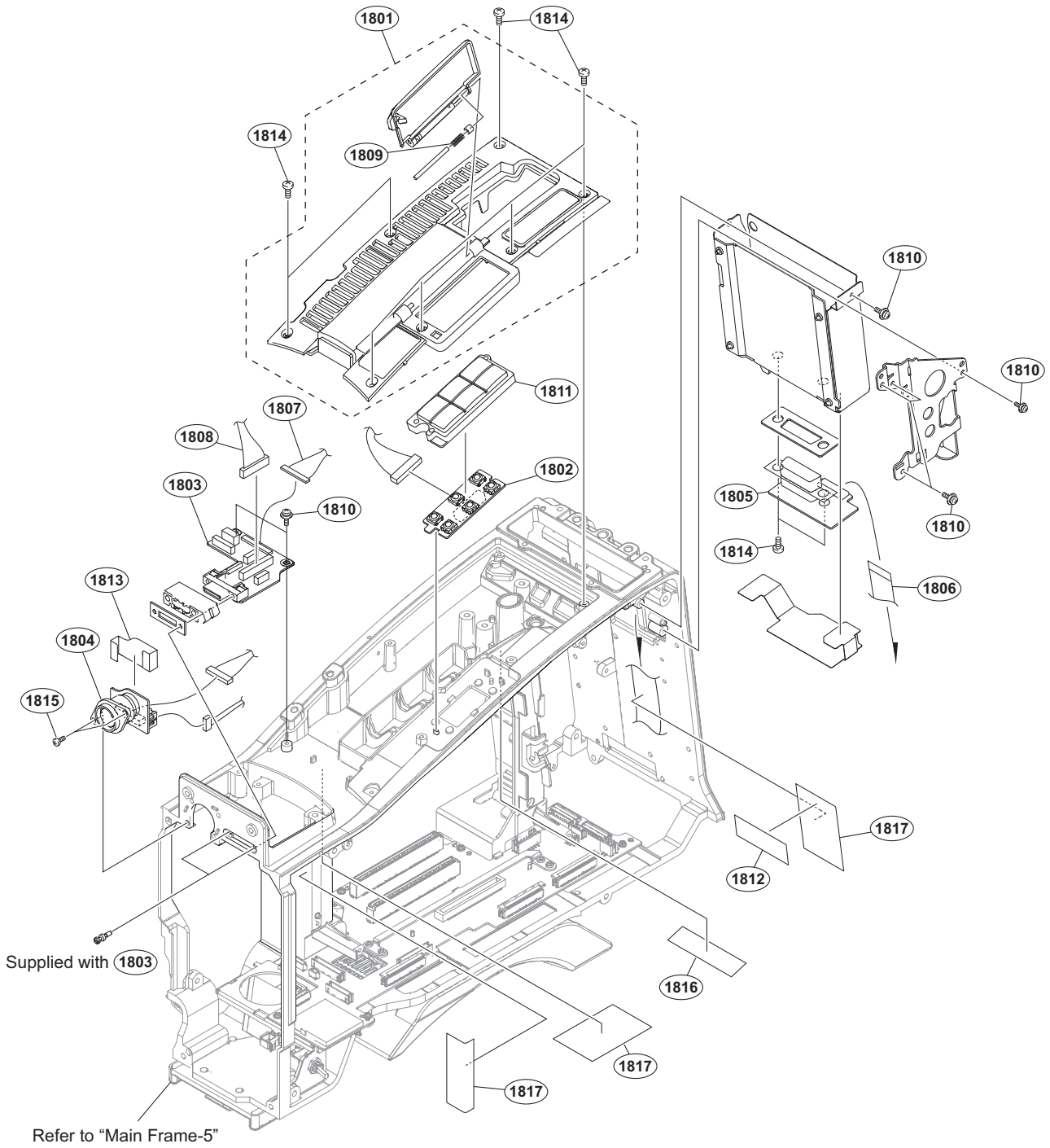


No.	Part No.	SP Description	No.	Part No.	SP Description
1701	A-2090-835-A	s MOUNTED CIRCUIT BOARD, SW-1681	1716	3-742-074-13	s SCREW (+B 3X8)
1702	A-2090-849-A	s MOUNTED CIRCUIT BOARD, RM-250	1717	3-796-985-02	s CUSHION, DROP PROTECTION
1703	A-2091-221-A	s MOUNTED CIRCUIT BOARD, AXM-57	1718	3-796-986-02	s KNOB, SLIDE SW
1704	1-784-240-11	s CONVERTER, COAXIAL CONNECTOR	1719	3-796-993-11	s CUSHION DROP PROTECTION TOGGLE
1705	1-837-296-11	s CABLE, FLEXIBLE FLAT (30 CORE)	1720	3-855-938-01	s SCREW [+PSW 2x5]
1706	1-837-331-11	s CABLE ASSY, COAXIAL (HDSDI) [Red]	1721	3-870-176-02	s BRACKET (DC OUT)
1707	1-967-026-12	s HARNESS, SUB (RM)	1722	3-870-177-01	s BRACKET (SW)
1708	1-970-438-11	s SUB HARNESS (AXM-SW)	1723	3-991-412-01	s BRACKET, BNC (S)
1709	1-970-439-11	s COAXIAL CABLE (DPR-HD/SDI_OUT1) [Yellow]	1724	4-136-517-01	s WASHER, BNC COAXIAL FIXED
1710	1-970-441-11	s SUB HARNESS (DC OUT)	1725	4-176-668-01	s BOTTOM GUARD
1711	1-970-449-11	s COAXIALCABLE (DPR-HD/SDI_OUT2) [Gray]	1726	4-431-734-01	s TAPE AS
1712	1-970-499-11	s SUB HARNESS (DC-IN)	1727	4-545-544-01	s SHEET (AXM), PROTECTION
1713	3-364-941-01	s SCREW (+B) (2.6X5), NYLOK	1728	4-545-554-01	s BOX, CONNECTOR
1714	3-626-781-03	s STOPPER	1729	4-654-273-03	s SCREW, NEW TRUSTER (M2) [B 2x5]
1715	3-723-097-01	o FOOT, RUBBER	1730	4-674-315-01	s SCREW (M2.6X6)
			1731	4-431-738-01	s TAPE 50

**Connector Box**

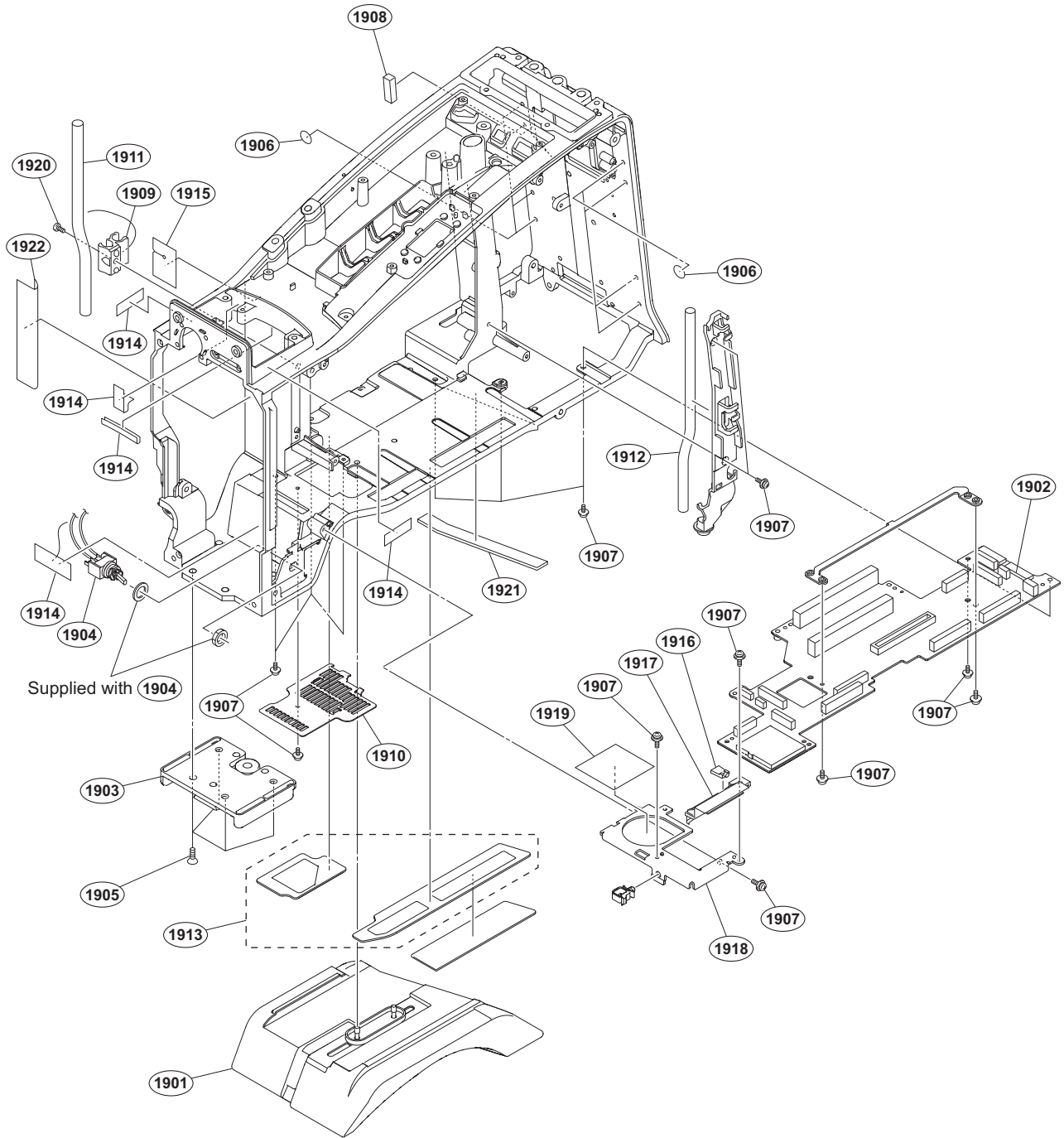
No.	Part No.	SP Description
	7-688-003-12 s	W 3, MIDDLE

# Main Frame-4



No.	Part No.	SP Description	No.	Part No.	SP Description
1801	A-2061-152-A	s COVER ASSY, TOP	1815	4-674-315-01	s SCREW (M2.6X6)
1802	A-2090-827-A	s MOUNTED CIRCUIT BOARD, KY-754	1816	4-488-383-01	s TAPE (13X50) //C
1803	A-2090-848-A	s MOUNTED CIRCUIT BOARD, HN-433	1817	4-431-738-01	s TAPE 50
1804	A-2090-853-A	s MOUNTED CIRCUIT BOARD, CN-3811			
1805	A-2090-855-A	s MOUNTED CIRCUIT BOARD, RX-140			
1806	1-837-297-11	s CABLE, FLEXIBLE FLAT (30 CORE)			
1807	1-967-683-11	s HARNESS (HDMI)			
1808	1-970-446-11	s SUB HARNESS (MB-HN)			
1809	3-234-710-01	o SPRING (OPEN), COMPRESSION COIL			
1810	3-855-938-01	s SCREW [+PSW 2x5]			
1811	4-169-111-01	s KEY SW COVER			
1812	4-431-734-01	s TAPE AS			
1813	4-545-550-01	s SHEET, CN3736			
1814	4-654-273-03	s SCREW, NEW TRUSTER(M2) [B 2x5]			

# Main Frame-5



No.	Part No.	SP Description
1901	A-1752-736-B	s SHOULDER PAD ASSY
1902	A-2090-822-A	s MOUNTED CIRCUIT BOARD, MB-1224
1903	A-8279-993-D	s SHOE (D) ASSY, V
1904	1-967-041-12	s HARNESS, SUB (POWER SW)
1905	3-729-072-02	s SCREW, +K (4X8)
1906	3-796-946-03	s TAPE (A)
1907	3-855-938-01	s SCREW [+PSW 2x5]
1908	4-000-497-02	s FOAM (ILI), SHIELD
1909	4-138-678-01	s CLAMP, CABLE
1910	4-168-987-02	s COVER BOTTOM
1911	4-169-108-21	s TUBE, DRAIN
1912	4-169-108-31	s TUBE, DRAIN
1913	4-169-114-03	s MESH, BOTTOM
1914	4-431-734-01	s TAPE AS

No.	Part No.	SP Description
1915	4-468-127-01	s CUSHION (LIGHT)
1916	4-545-547-01	s LIGHT GUIDE (MB SD)
1917	4-545-549-01	s ESCUTCHEON (MB SD)
1918	4-545-553-01	s MB BRACKET (FRONT)
1919	4-582-691-01	s SHEET, MB BRACKET
1920	4-674-315-01	s SCREW (M2.6X6)
1921	4-468-138-02	s FOAM (7X2), SHIELD
1922	4-431-738-01	s TAPE 50

## 6-3. Supplied Accessories

### PXW-X400

Q'ty	Part No.	SP Description
1pc	A-1963-392-C	s DONGLE ASSY(WW)
1pc	A-6772-374-C	s BELT ASSY, SHOULDER
1pc	X-2546-633-1	s KIT,COLD SHOE
4pcs	3-080-203-32	s SCREW (M2), NEW TRUSTER, P2
1pc	3-688-754-11	s SPRING
1pc	3-688-755-13	s SHOE, ACCESSORY
1pc	3-764-889-01	o CHART, ADJUSTMENT
1pc	4-279-469-01	s CAP (USB), WATERPROOF
1pc	4-559-711-01	s WIFI GUARD
1pc	△ 4-587-875-01	s CD-ROM (INSTRUCTION MANUAL)

### PXW-X400KC

Q'ty	Part No.	SP Description
1pc	A-1963-392-C	s DONGLE ASSY(WW)
1pc	A-6772-374-C	s BELT ASSY, SHOULDER
1pc	X-2546-633-1	s KIT,COLD SHOE
1pc	1-542-823-14	s MICROPHONE (STEREO)
4pcs	3-080-203-32	s SCREW (M2), NEW TRUSTER, P2
1pc	3-688-754-11	s SPRING
1pc	3-688-755-13	s SHOE, ACCESSORY
1pc	3-764-889-01	o CHART, ADJUSTMENT
1pc	3-991-419-01	s WIND SCREEN
1pc	4-279-469-01	s CAP (USB), WATERPROOF
1pc	4-559-711-01	s WIFI GUARD
1pc	△ 4-587-875-01	s CD-ROM (INSTRUCTION MANUAL)

### PXW-X400KF

Q'ty	Part No.	SP Description
1pc	A-1963-392-C	s DONGLE ASSY(WW)
1pc	A-6772-374-C	s BELT ASSY, SHOULDER
1pc	X-2546-633-1	s KIT,COLD SHOE
1pc	1-542-823-14	s MICROPHONE (STEREO)
4pcs	3-080-203-32	s SCREW (M2), NEW TRUSTER, P2
1pc	3-688-754-11	s SPRING
1pc	3-688-755-13	s SHOE, ACCESSORY
1pc	3-764-889-01	o CHART, ADJUSTMENT
1pc	3-991-419-01	s WIND SCREEN
1pc	4-279-469-01	s CAP (USB), WATERPROOF
1pc	4-559-711-01	s WIFI GUARD
1pc	△ 4-587-875-01	s CD-ROM (INSTRUCTION MANUAL)

### PXW-X580

Q'ty	Part No.	SP Description
1pc	A-1963-393-B	s DONGLE ASSY (CN)
1pc	A-6772-374-C	s BELT ASSY, SHOULDER
1pc	X-2546-633-1	s KIT,COLD SHOE
4pcs	3-080-203-32	s SCREW (M2), NEW TRUSTER, P2
1pc	3-688-754-11	s SPRING
1pc	3-688-755-13	s SHOE, ACCESSORY
1pc	3-764-889-01	o CHART, ADJUSTMENT
1pc	4-279-469-01	s CAP (USB), WATERPROOF
1pc	4-559-711-01	s WIFI GUARD

### PXW-X580

Q'ty	Part No.	SP Description
1pc	△ 4-587-878-01	s CD-ROM (INSTRUCTION MANUAL)

### PXW-X580KC

Q'ty	Part No.	SP Description
1pc	A-1963-393-B	s DONGLE ASSY (CN)
1pc	A-6772-374-C	s BELT ASSY, SHOULDER
1pc	X-2546-633-1	s KIT,COLD SHOE
1pc	1-542-823-14	s MICROPHONE (STEREO)
4pcs	3-080-203-32	s SCREW (M2), NEW TRUSTER, P2
1pc	3-688-754-11	s SPRING
1pc	3-688-755-13	s SHOE, ACCESSORY
1pc	3-764-889-01	o CHART, ADJUSTMENT
1pc	3-991-419-01	s WIND SCREEN
1pc	4-279-469-01	s CAP (USB), WATERPROOF
1pc	4-559-711-01	s WIFI GUARD
1pc	△ 4-587-878-01	s CD-ROM (INSTRUCTION MANUAL)

### PXW-X580KF

Q'ty	Part No.	SP Description
1pc	A-1963-393-B	s DONGLE ASSY (CN)
1pc	A-6772-374-C	s BELT ASSY, SHOULDER
1pc	X-2546-633-1	s KIT,COLD SHOE
1pc	1-542-823-14	s MICROPHONE (STEREO)
4pcs	3-080-203-32	s SCREW (M2), NEW TRUSTER, P2
1pc	3-688-754-11	s SPRING
1pc	3-688-755-13	s SHOE, ACCESSORY
1pc	3-764-889-01	o CHART, ADJUSTMENT
1pc	3-991-419-01	s WIND SCREEN
1pc	4-279-469-01	s CAP (USB), WATERPROOF
1pc	4-559-711-01	s WIFI GUARD
1pc	△ 4-587-878-01	s CD-ROM (INSTRUCTION MANUAL)

