

SONY®

Solid-State Memory Camcorder

PXW-Z150



XDCM



SERVICE MANUAL

1st Edition

Section 5

Repair Parts List

5-1. Note on Repair Parts

(ENGLISH)

NOTE:

- -XX, -X mean standardized parts, so they may have some differences from the original one.
- Items marked "*" are not stocked since they are seldom required for routine service. Some delay should be anticipated when ordering these items.
- The mechanical parts with no reference number in the exploded views are not supplied.
- Due to standardization, replacements in the parts list may be different from the parts specified in the diagrams or the components used on the set.
- ns: Not supplied part.
- CAPACITORS:
uF: μ F
- COILS
uH: μ H
- RESISTORS
All resistors are in ohms.
METAL: metal-film resistor
METAL OXIDE: Metal Oxide-film resistor
F: nonflammable
- SEMICONDUCTORS
In each case, u: μ , for example:
uA... : μ A..., uPA... : μ PA..., uPB... : μ PB...,
uPC... : μ PC..., uPD... : μ PD...

The components identified by mark \triangle or dotted line with mark \triangle are critical for safety.
Replace only with part number specified.

Les composants identifiés par une marque \triangle sont critiques pour la sécurité.
Ne les remplacer que par une pièce portant le numéro spécifié.

CAUTION

Danger of explosion if battery is incorrectly replaced.
Replace only with the same or equivalent type.
Dispose of used batteries according to the instructions.

注意

如果电池更换不当会有爆炸危险。
只能用同样类型或等效类型的电池来更换。
务必按照说明处置用完的电池。

- Color Indication of Appearance Parts
Example:
(SILVER) : Cabinet's Color
(Silver) : Parts Color

(JAPANESE)

【使用上の注意】

- -XX, -Xは標準化部品のため、セットに付いている部品と異なる場合があります。
- *印の部品は常備在庫していません。
- ここに記載されている部品は、補修用部品であるため、回路図及びセットに付いている部品と異なる場合があります。
- ns: 供給対象外部品。
- コンデンサの単位でuFは μ Fを示します。
- 抵抗の単位 Ω は省略してあります。
金 被 : 金属被膜抵抗。
サンキン : 酸化金属被膜抵抗。
- インダクタの単位でuHは μ Hを示します。
- 半導体の名称でuA..., uPA..., uPB..., uPC..., uPD...等はそれぞれ μ A..., μ PA..., μ PB..., μ PC..., μ PD...を示します。

\triangle 印の部品、または \triangle 印付の点線で囲まれた部品は、安全性を維持するために、重要な部品です。
従って交換時は、必ず指定の部品を使用してください。

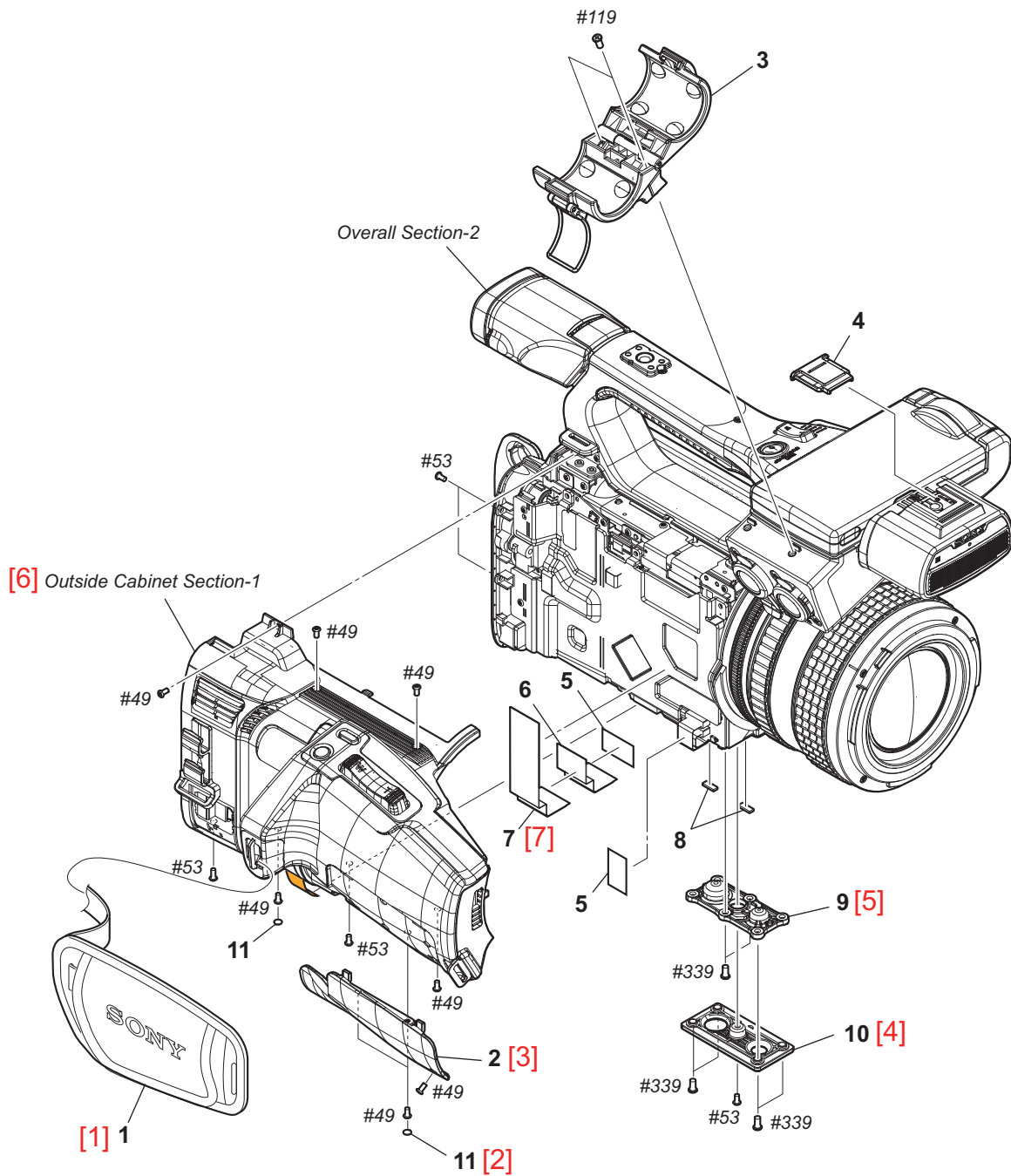
注意

電池の交換は、正しく行わないと破裂する恐れがあります。電池を交換する場合には必ず同じ型名の電池又は同等品と交換してください。
使用済み電池は、取扱指示に従って処分してください。

- 外装部品色表示
例：
(SILVER) : セットの色を表す。
(Silver) : 部品の色を表す。

5-2. Exploded View

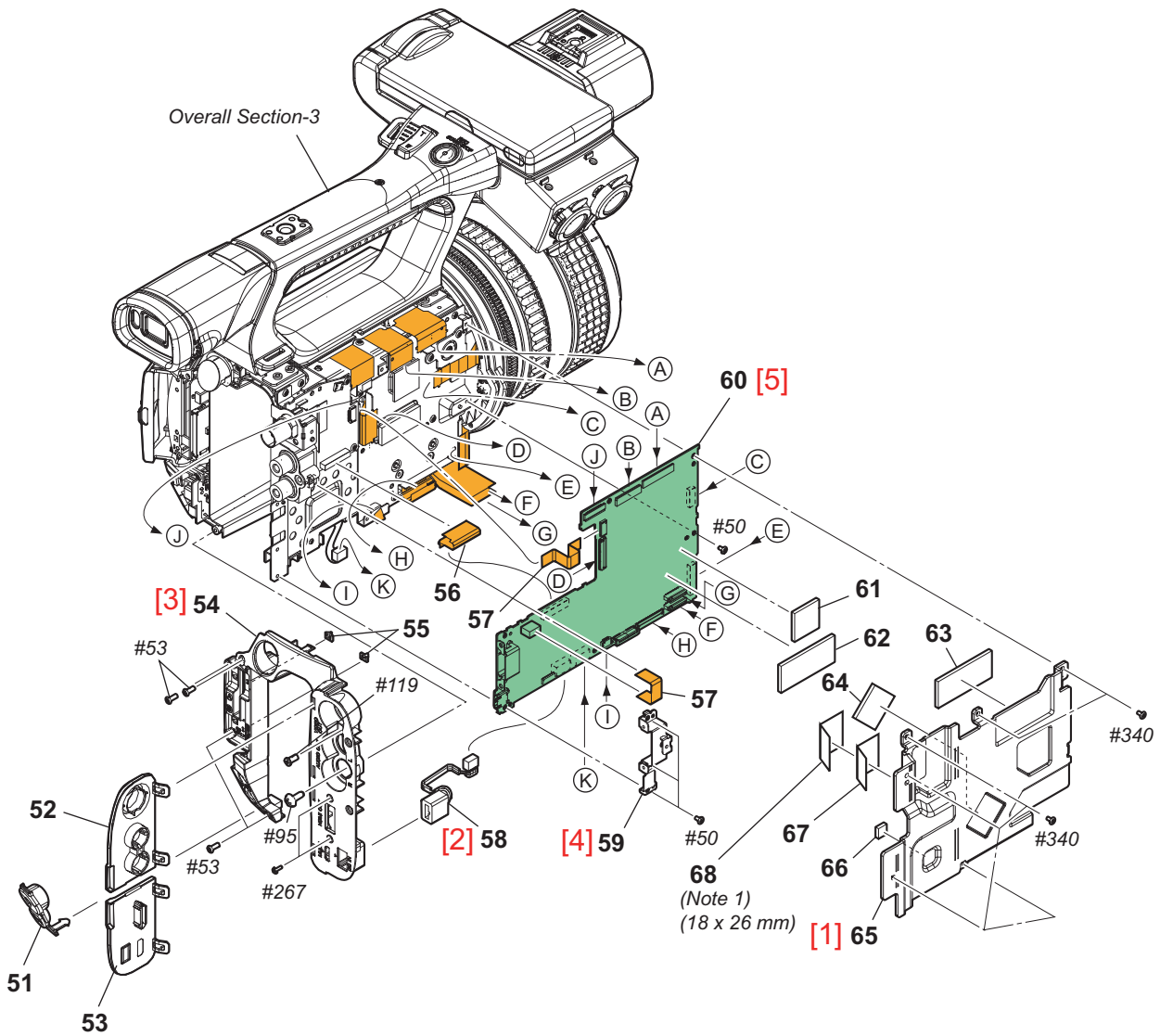
Overall Section-1



Ref. No. or Q'ty	Part No.	SP Description
1	2-178-804-01	BELT, GRIP
2	4-577-902-03	COVER, GRIP (931)
3	X-2592-389-1	HOLDER (931) ASSY, MICROPHONE
4	4-438-734-12	SHOE CAP (875)
5	4-475-841-11	SHEET (HN)
6	4-588-370-01	AMUMINIUM TAPE (1835)
7	4-533-043-01	SHEET (A), CM RADIATION
8	4-589-128-01	GASKET (T0.5)
9	4-576-418-01	SCREW, TRIPOD
10	4-577-837-01	CABINET, BOTTOM
11	4-590-839-01	SHEET, SCREW
#49	2-630-005-31	SCREW (M2), NEW TRUSTER, P2

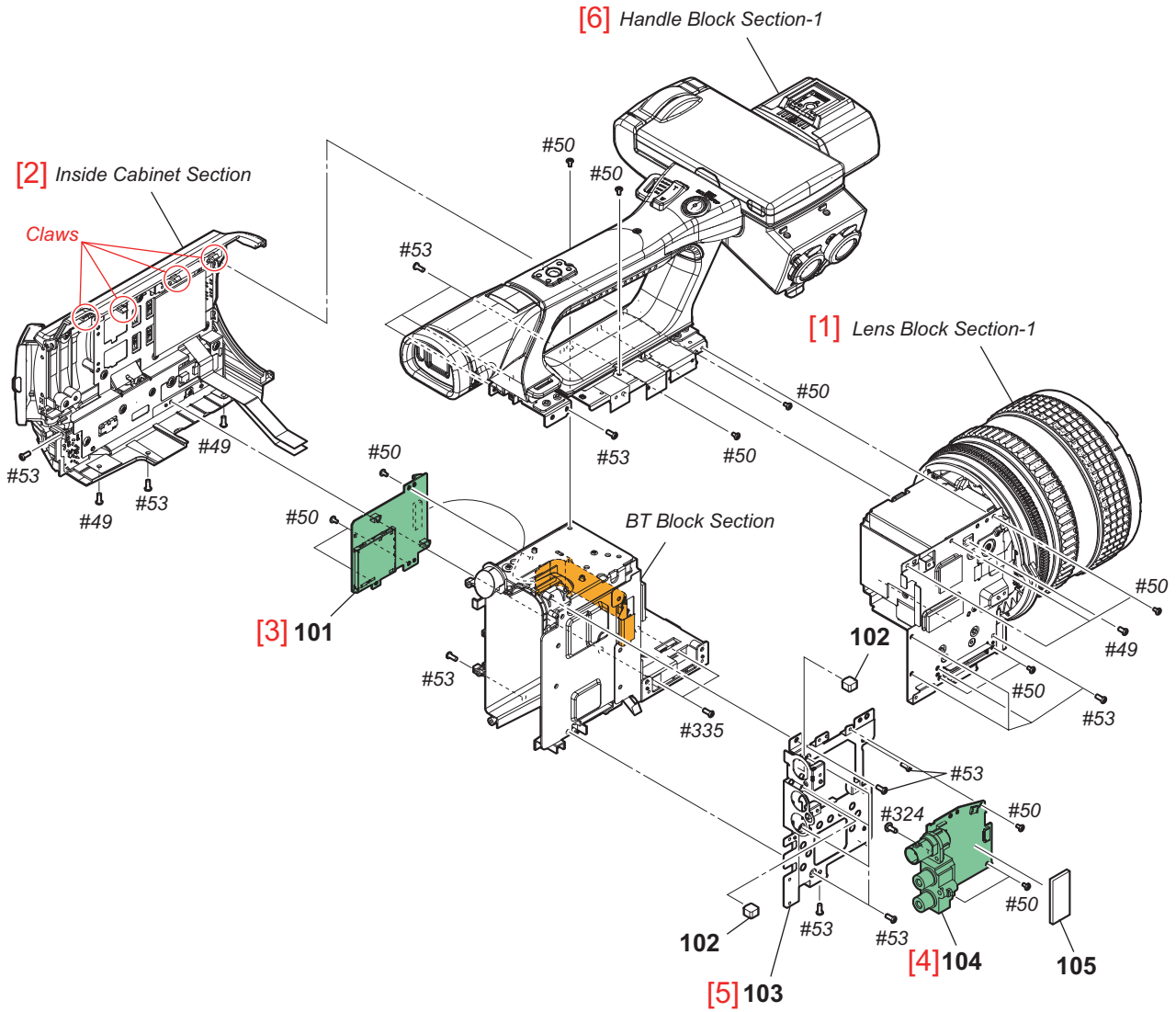
Ref. No. or Q'ty	Part No.	SP Description
#53	3-080-206-21	SCREW, TAPPING, P2
#119	7-627-556-58	SCREW +P 2.6X5
#339	7-627-556-98	SCREW, PRECISION +P 2.6X8 TYPE1

Overall Section-2



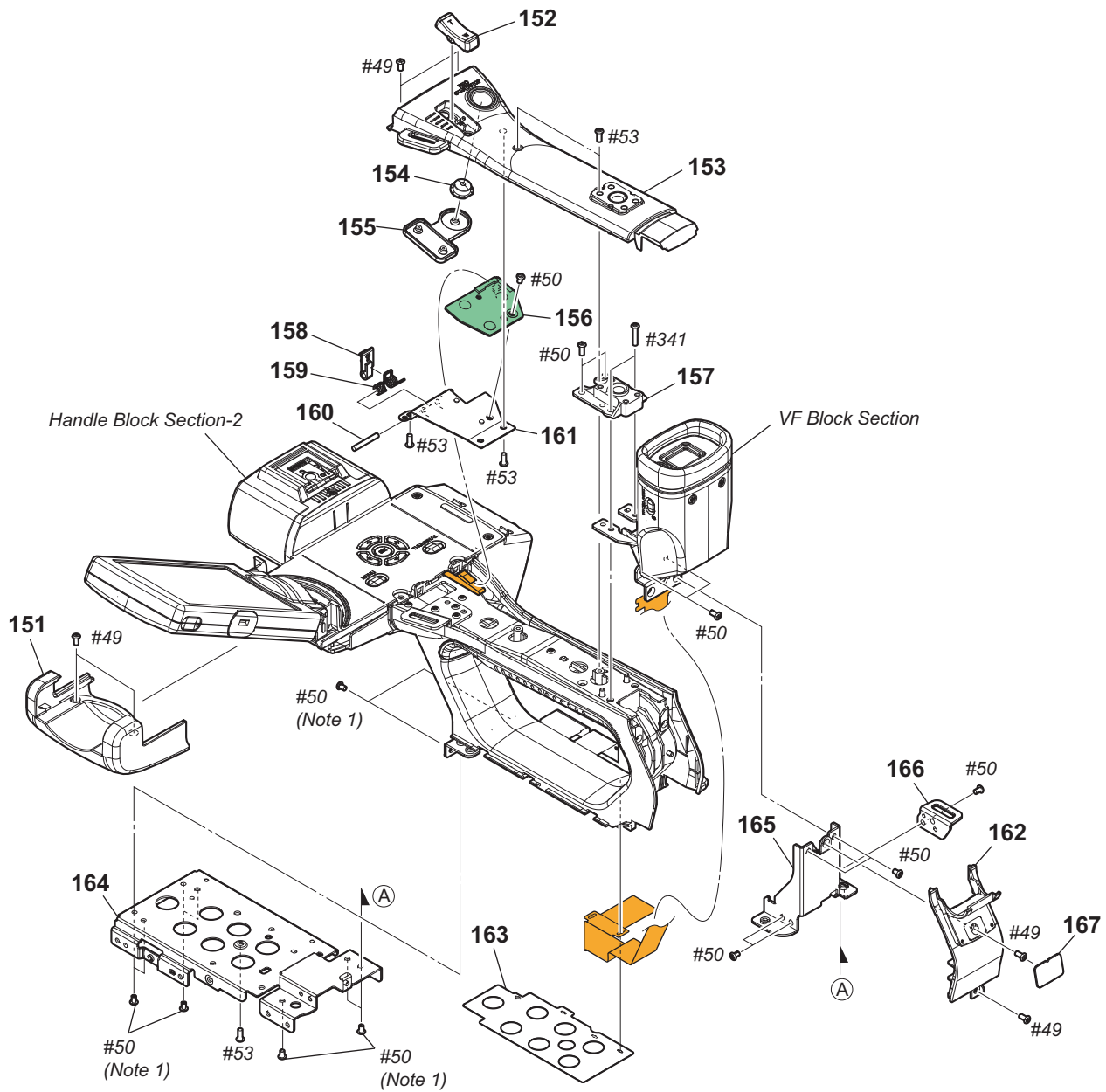
Ref. No. or Q'ty	Part No.	SP Description	Ref. No. or Q'ty	Part No.	SP Description
51	4-577-834-02	LID, HP	#340	3-056-233-22	SCREW (M2), NEW TRUSTER, P2
52	4-577-832-11	LID, AV			
53	4-577-833-01	LID, HDMI			
54	4-577-890-11	CABINET, REAR	#95	7-685-646-79	SCREW +BVTP 3X8 TYPE2 N-S
55	4-532-975-01	LIGHT, MS GUIDE,	#119	7-627-556-58	SCREW +P 2.6X5
56	1-894-981-11	FP-2346 FLEXIBLE BOARD			
57	1-839-086-21	CABLE, FLEXIBLE FLAT (FFC-256)			
58	1-785-247-31	CONNECTOR, DC-IN			
59	4-577-835-01	FRAME, HDMI			
60	A-2122-156-A	VC-1041 BOARD, COMPLETE (SERVICE)			
61	4-588-359-01	SHEET (D1919), RADIATION			
62	4-588-372-01	SHEET (D2551), RADIATION			
63	4-588-360-01	SHEET (1535), RADIATION			
64	4-588-362-01	SHEET (1717), RADIATION			
65	4-587-014-01	HEAT SINK (VC (971))			
66	4-588-358-01	SHEET (0606), RADIATION			
67	4-592-507-01	SHEET (1624), RADIATION			
68	4-583-937-01	PET SHEET (19X38)			
#50	2-891-494-11	SCREW (M2), NEW TRUSTER, P2			
#53	3-080-206-21	SCREW, TAPPING, P2			
#267	4-287-436-21	SCREW (M1.7)			

Overall Section-3



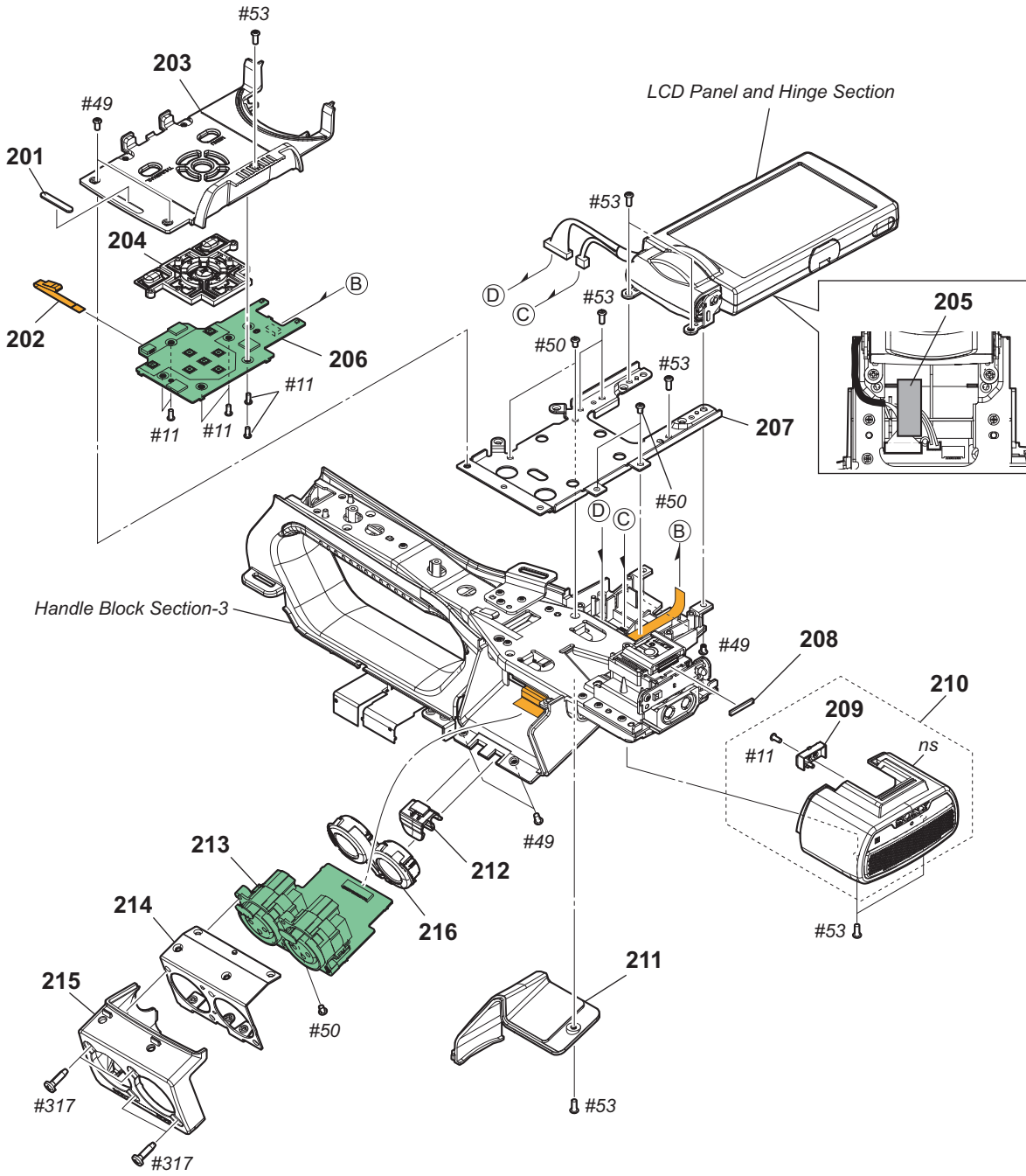
Ref. No. or Q'ty	Part No.	SP Description
101	A-2086-011-A	MS-1030 BOARD, COMPLETE
102	4-583-929-01	GASKET (HN BASE)
103	4-577-889-02	FRAME, JK
104	A-2126-493-A	SD-1007 BOARD, COMPLETE
105	4-588-355-01	SHEET (SD-A), RADIATION
#49	2-630-005-31	SCREW (M2), NEW TRUSTER, P2
#50	2-891-494-11	SCREW (M2), NEW TRUSTER, P2
#53	3-080-206-21	SCREW, TAPPING, P2
#324	3-364-941-01	SCREW (+B) (2.6X5), NYLOK
#335	3-080-205-31	SCREW, TAPPING, P2

Handle Block Section-1



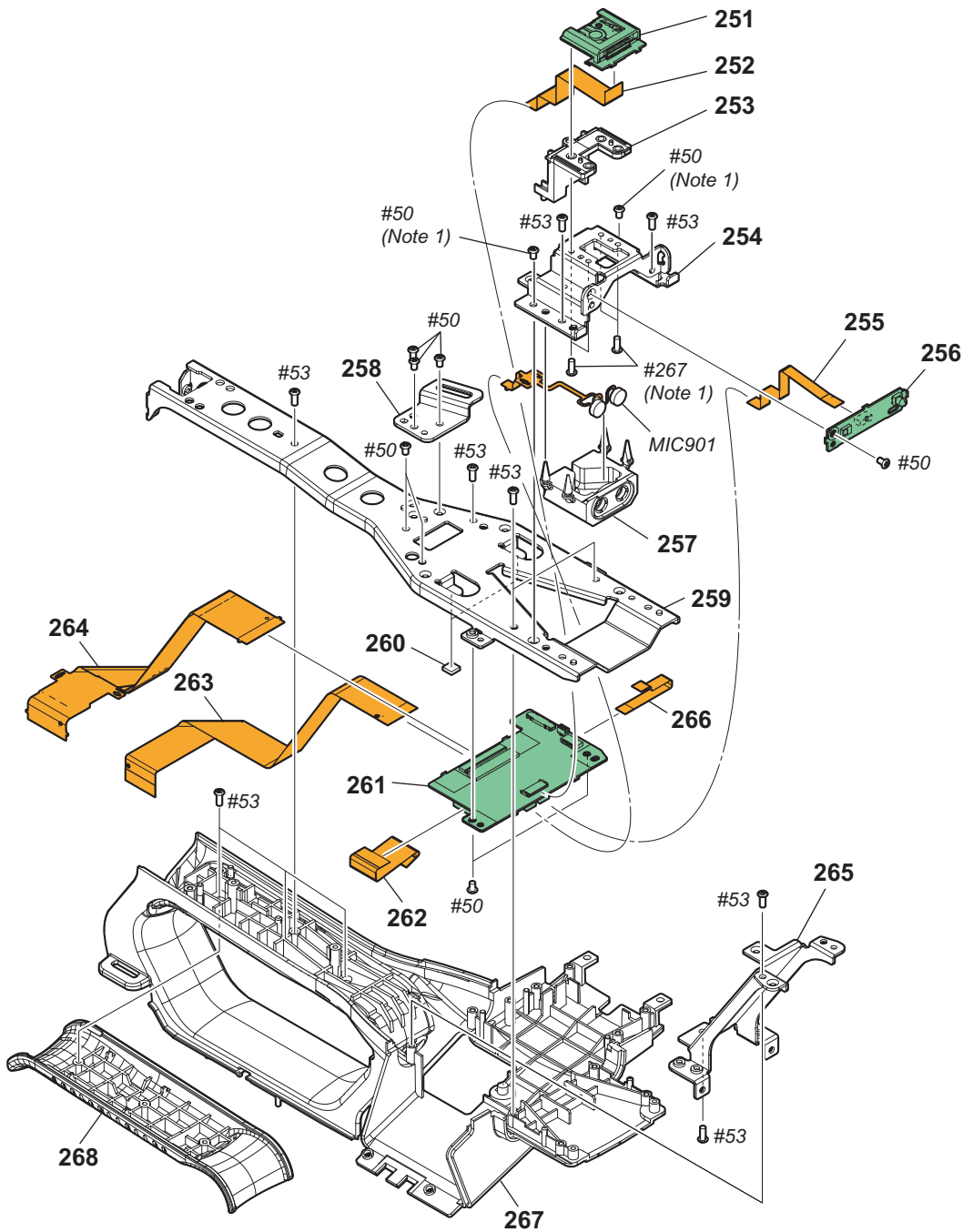
Ref. No. or Q'ty	Part No.	SP Description	Ref. No. or Q'ty	Part No.	SP Description
151	4-577-854-11	CABINET, HANDLE (HI)	#50	2-891-494-11	SCREW (M2), NEW TRUSTER, P2
152	4-577-878-01	KEY, ZOOM HS	#53	3-080-206-21	SCREW, TAPPING, P2
153	4-587-007-01	CABINET HANDLE (TOP) (971)	#341	3-080-205-51	SCREW, TAPPING, P2
154	4-577-880-01	BUTTON, HS SS			
155	4-577-879-01	RUBBER, HANDLE HS			
156	A-2086-005-A	HS-1005 BOARD, COMPLETE			
157	4-587-016-01	COLDSHOE (971)			
158	3-288-511-02	CLAW, LOCK			
159	4-577-882-01	SPRING, LCD LOCK			
160	3-703-358-06	PIN, PARALLEL (DIA. 2X14)			
161	4-577-881-01	PLATE, FIX HS			
162	4-577-859-11	CABINET, HANDLE (REAR)			
163	4-577-876-01	SHEET, ISOLATION (TOP)			
164	4-577-867-01	FRAME, TOP			
165	4-577-861-01	FRAME, HANDLE (REAR)			
166	4-577-866-01	FRAME, STRAP (REAR)			
167	4-583-934-01	SHEET, HANDLE (REAR)			
#49	2-630-005-31	SCREW (M2), NEW TRUSTER, P2			

Handle Block Section-2



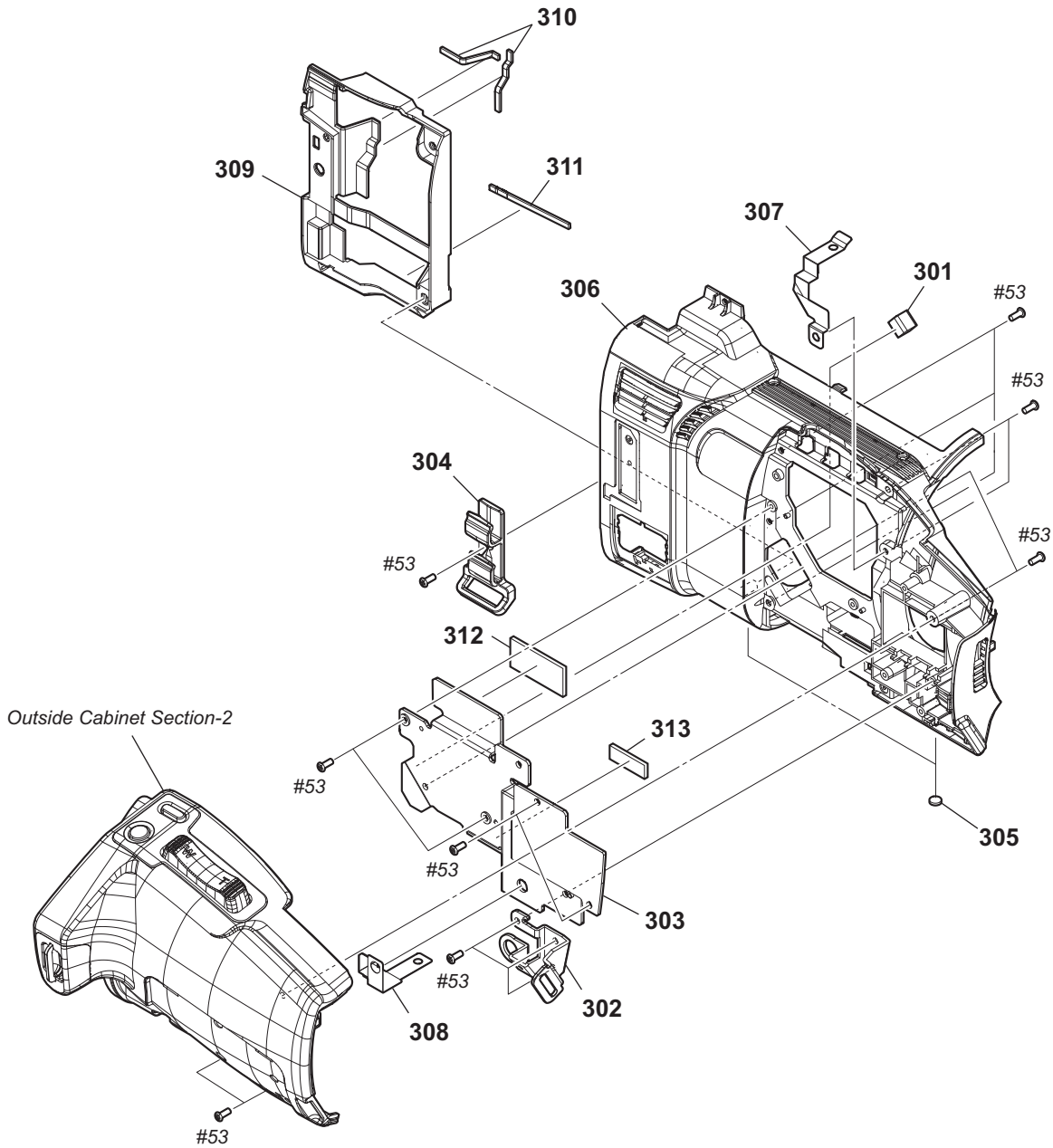
Ref. No. or Q'ty	Part No.	SP Description	Ref. No. or Q'ty	Part No.	SP Description
201	3-288-474-01	RUBBER, PANEL RETAINER	215	4-577-857-11	CABINET, HANDLE (XLR)
202	1-971-077-11	FLEXIBLE FLAT CABLE (FFC-1071)	216	4-577-874-01	COVER, XLR RUBBER
203	4-577-855-11	CABINET, HANDLE (HK)	#11	3-078-890-11	SCREW, TAPPING
204	4-577-877-01	BUTTON, HK	#49	2-630-005-31	SCREW (M2), NEW TRUSTER, P2
205	4-448-576-02	TAPE (AS (1025))	#50	2-891-494-11	SCREW (M2), NEW TRUSTER, P2
206	A-2086-003-A	HK-1002 BOARD, COMPLETE	#53	3-080-206-21	SCREW, TAPPING, P2
207	4-577-864-01	FRAME, HANDLE (HK)	#317	7-685-535-19	SCREW +BTP 2.6X10 TYPE2 N-S
208	4-588-373-01	CUSHION (T3), SHOE			
209	4-533-038-01	TALLY, REC			
210	A-2123-193-A	SERVICE, CABINET ASSY MIC			
211	4-577-856-11	CABINET, HANDLE (FRONT)			
212	2-892-095-01	CLAMP, CABLE			
213	A-2086-018-A	XL-1007 BOARD, COMPLETE			
214	4-577-875-02	PLATE, XLR			

Handle Block Section-3



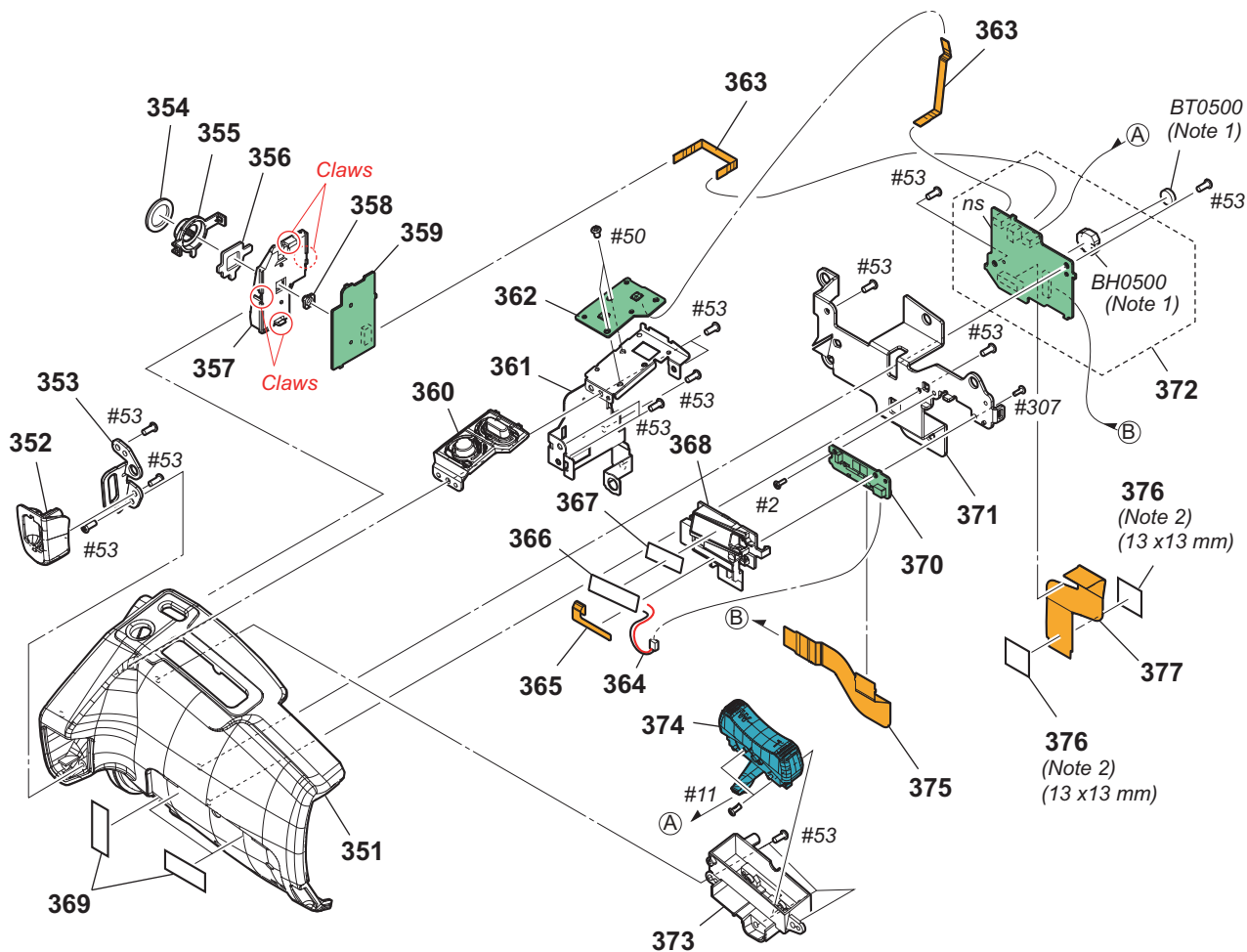
Ref. No. or Q'ty	Part No.	SP Description	Ref. No. or Q'ty	Part No.	SP Description
251	A-2086-010-A	MI-2004 BOARD, COMPLETE	265	4-577-860-01	FRAME, HANDLE (FRONT)
252	1-971-076-11	FLEXIBLE FLAT CABLE (FFC-1069)	266	1-971-078-11	FLEXIBLE FLAT CABLE (FFC-1072)
253	4-577-868-01	CABINET, SPACER MI SHOE	267	4-577-853-11	CABINET, HANDLE (MAIN)
254	4-577-862-01	FRAME, HANDLE (MIC)	268	4-165-278-01	GRIP
255	1-971-071-11	FLEXIBLE FLAT CABLE (FFC-1076)	MIC901	1-894-979-11	MIC UNIT
256	A-2086-007-A	IR-1008 BOARD, COMPLETE	#50	2-891-494-11	SCREW (M2), NEW TRUSTER, P2
257	4-577-869-01	INSULATOR, MIC	#53	3-080-206-21	SCREW, TAPPING, P2
258	4-577-865-01	FRAME, STRAP (FRONT)	#267	4-287-436-21	SCREW (M1.7)
259	4-577-863-01	FRAME, HANDLE (BASE)			
260	4-534-480-01	BM, GASKET			
261	A-2086-014-A	PI-1004 BOARD, COMPLETE			
262	1-971-072-11	FLEXIBLE FLAT CABLE (FFC-1077)			
263	1-971-079-21	FLEXIBLE FLAT CABLE (FFC-1073)			
264	1-894-978-11	FP-2343 FLEXIBLE BOARD			

Outside Cabinet Section-1



Ref. No. or Q'ty	Part No.	SP Description
301	4-588-354-01	GASKET (BT)
302	4-577-904-01	PLATE, GRIP BELT (FRONT)
303	4-587-015-01	HEAT SINK (OUT (971))
304	4-578-156-01	CLAMPER, HARNESS
305	2-589-376-01	FOOT (395), RUBBER
306	4-587-009-01	CABINET (971), OUT SIDE
307	4-577-903-01	TAPE (T), CONDUCTIVE
308	4-579-428-01	TAPE (B), CONDUCTIVE
309	4-587-010-01	DUCT (971), OUT SIDE
310	4-588-365-01	SHEET (M), DROP PROTECTION
311	4-588-366-01	SHEET (L), DROP PROTECTION
312	4-588-363-01	SHEET (1530), RADIATION
313	4-588-364-01	SHEET (0815), RADIATION
#53	3-080-206-21	SCREW, TAPPING, P2

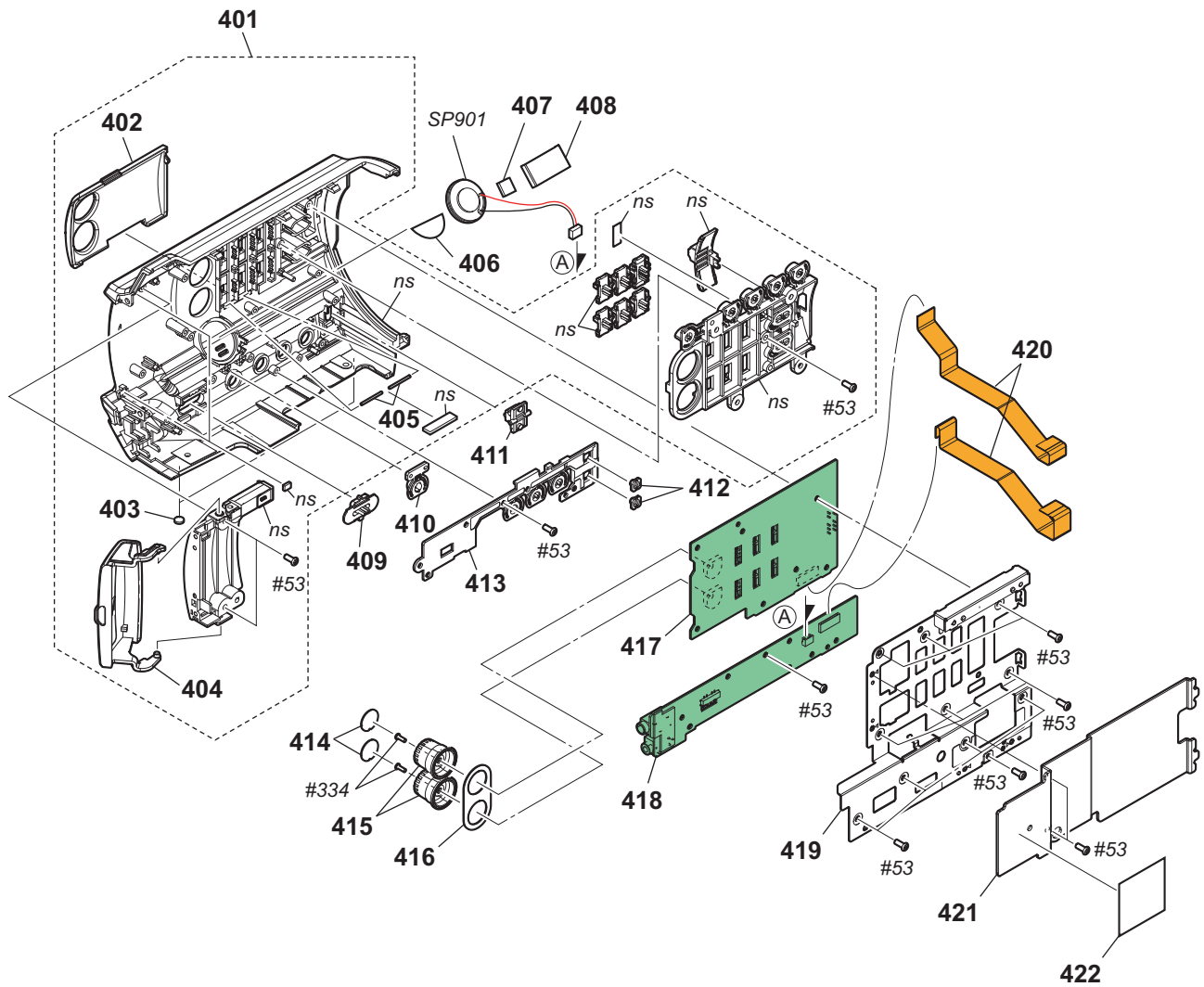
Outside Cabinet Section-2



Ref. No. or Q'ty	Part No.	SP Description
351	4-577-894-11	CABINET, GRIP
352	4-165-330-01	HOLDER, GRIP BELT
353	4-165-331-01	BRACKET (REAR), GRIP BELT
354	4-583-698-01	CUSHION (REC), MUFFLE
355	4-577-898-01	BUTTON, REC (931)
356	4-583-699-01	CUSHION (GUIDE, LIGHT), MUFFLE
357	4-577-897-01	GUIDE LIGHT, GIRP LED (931)
358	4-299-985-01	RUBBER, SS
359	A-2086-015-A	SS-1005 BOARD, COMPLETE
360	4-577-896-01	BUTTON, SWITCH (931)
361	4-577-899-01	FRAME, SS (931)
362	A-2086-013-A	PH-1003 BOARD, COMPLETE
363	1-971-077-11	FLEXIBLE FLAT CABLE (FFC-1071)
364	1-846-787-31	CABLE
365	1-889-592-12	AN-1006 FLEXIBLE BOARD
366	A-2079-995-A	SERVICE, NFC INDIVIDUAL
367	4-489-010-01	SHEET (ANT), ADHESIVE
368	4-488-861-01 *	HOLDER, WF
369	4-448-576-02	TAPE (AS (1025))
370	A-2107-207-A	WF-1004 BOARD, COMPLETE
371	4-488-860-01 *	HEAT SINK, G
372	A-2077-276-A	GC-1005 BOARD, COMPLETE
373	4-577-895-01	RETAINER, ZOOM
374	1-490-411-11	SWITCH BLOCK, CONTROL (PZ96000)
375	1-889-610-11	FP-2218 FLEXIBLE BOARD
376	4-579-426-01	SHEET (HANDLE FRONT), RADIATION
377	1-889-609-11	FP-2217 FLEXIBLE BOARD

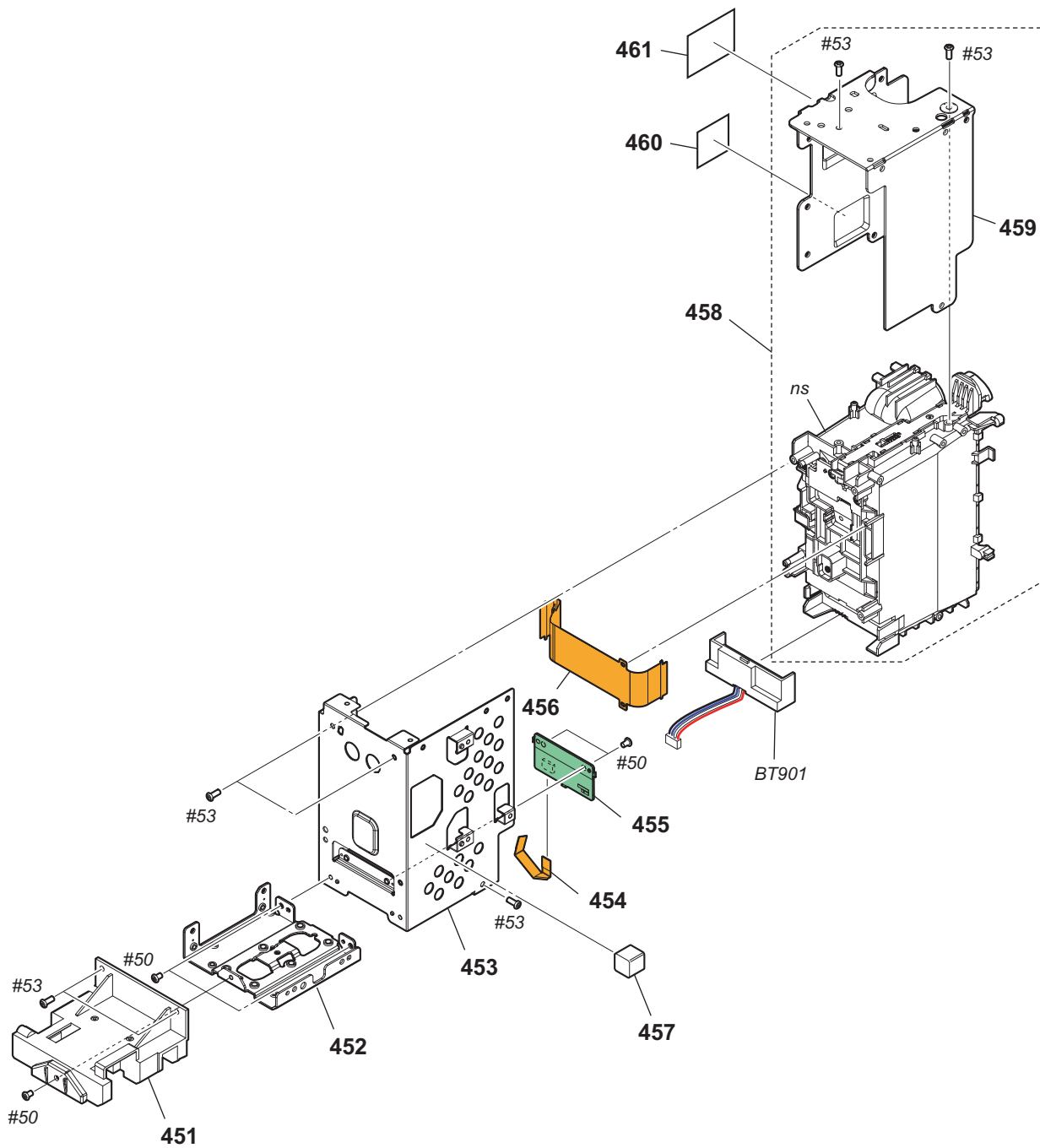
Ref. No. or Q'ty	Part No.	SP Description
BH0500 ⚠	1-251-928-21	SOCKET, BATTERY
BT0500 ⚠	1-756-134-16	BATTERY, LITHIUM (SECONDARY)
#2	2-635-562-31	SCREW (M1.7)
#11	3-078-890-11	SCREW, TAPPING
#50	2-891-494-11	SCREW (M2), NEW TRUSTER, P2
#53	3-080-206-21	SCREW, TAPPING, P2
#307	3-078-890-31	SCREW, TAPPING

Inside Cabinet Section



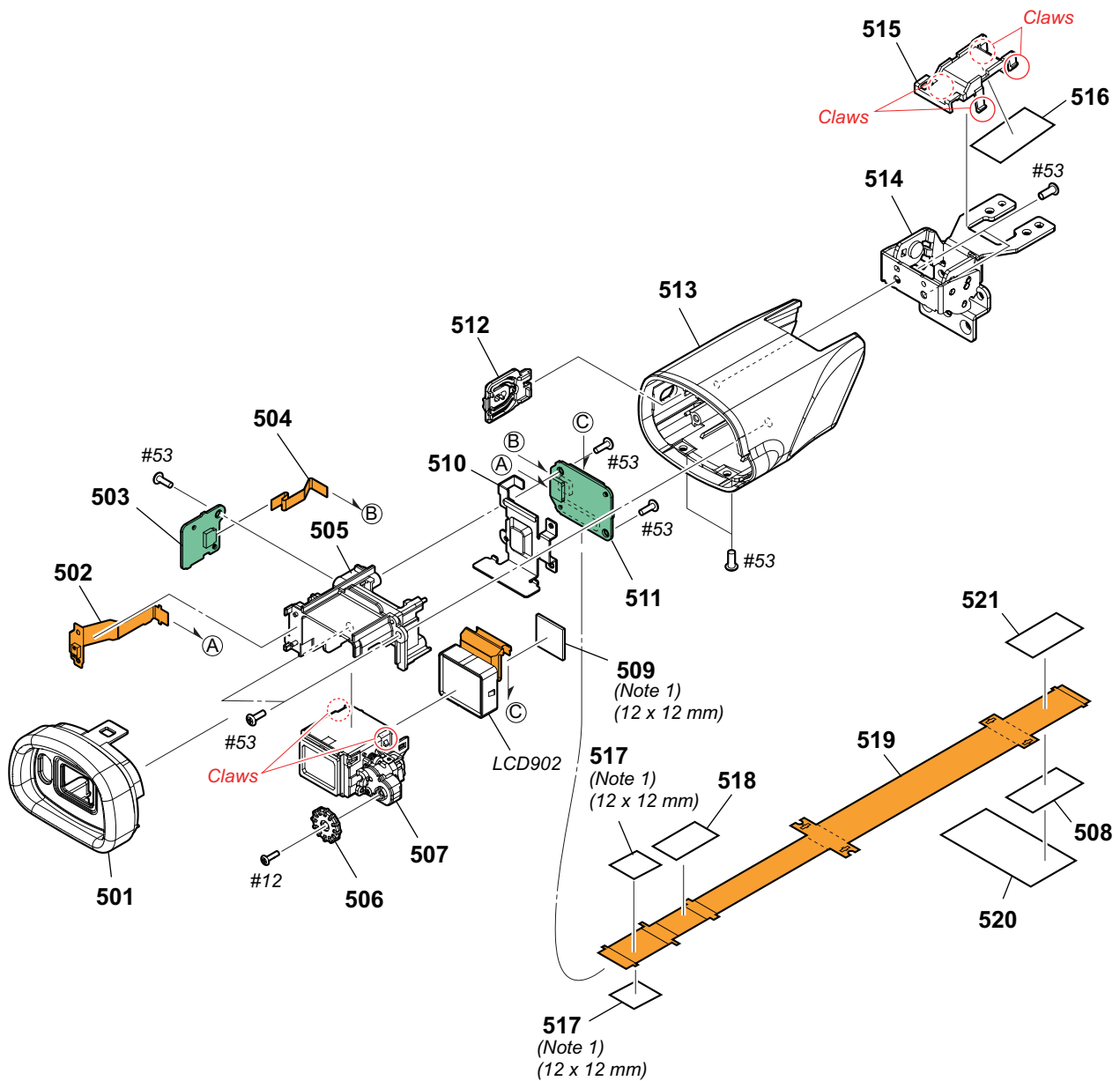
Ref. No. or Q'ty	Part No.	SP Description
401	A-2123-192-A	SERVICE, CABINET ASSY INSIDE
402	4-587-002-01	LID (971), AU
403	2-589-376-01	FOOT (395), RUBBER
404	4-577-852-02	LID, MS
405	3-669-481-04	PIN (DIA. 1X12), PARALLEL
406	4-579-425-01	SHEET, SPEAKER
407	4-584-050-01	CUSHION, SPEAKER
408	4-448-576-02	TAPE (AS (1025))
409	4-577-843-01	SW, IO SLIDE
410	4-577-844-01	BUTTON, AUTO
411	4-577-845-01	LEVER, SELECT
412	4-299-985-01	RUBBER, SS
413	4-577-848-01	HOLDER, GAIN BUTTON
414	4-577-850-01	SHEET, AU VOLUME
415	4-577-849-02	KNOB, AU VOLUME
416	4-579-424-01	CUSHION, AU VOLUME
417	A-2086-009-A	KY-1013 BOARD, COMPLETE
418	A-2086-004-A	HP-1010 BOARD, COMPLETE
419	4-577-851-01	FRAME, INSIDE
420	1-971-073-21	FLEXIBLE FLAT CABLE (FFC-1065)
421	4-587-013-01	HEAT SINK (IN (971))
422	4-588-371-01	SHEET (2626), RADIATION
SP901	1-858-075-51	SPEAKER (1.8CM)
#53	3-080-206-21	SCREW, TAPPING, P2
#334	4-412-769-51	SCREW (M1.4), NEW TRU-STAR, P2

BT Block Section



Ref. No. or Q'ty	Part No.	SP Description	Ref. No. or Q'ty	Part No.	SP Description
451	4-577-888-01	INNER MOLD (BM)	#53	3-080-206-21	SCREW, TAPPING, P2
452	4-577-884-01	FRAME, MAIN (BM)			
453	4-577-883-01	FRAME, MAIN			
454	1-839-082-11	CABLE, FLEXIBLE FLAT (FFC-246)			
455	A-2093-483-A	GY-1010 BOARD, COMPLETE (SERVICE)			
456	1-894-977-11	FP-2342 FLEXIBLE BOARD			
457	4-588-354-01	GASKET (BT)			
458	A-2093-163-A	CABINET BLOCK ASSY (SERVICE)			
459	4-577-887-02	PLATE, HEAT RADIATION SD			
460	4-588-357-01	SHEET (BT-1), RADIATION			
461	4-588-356-01	SHEET (SD-B), RADIATION			
BT901	△ 1-694-411-31	TERMINAL BOARD, BATTERY			
#50	2-891-494-11	SCREW (M2), NEW TRUSTER, P2			

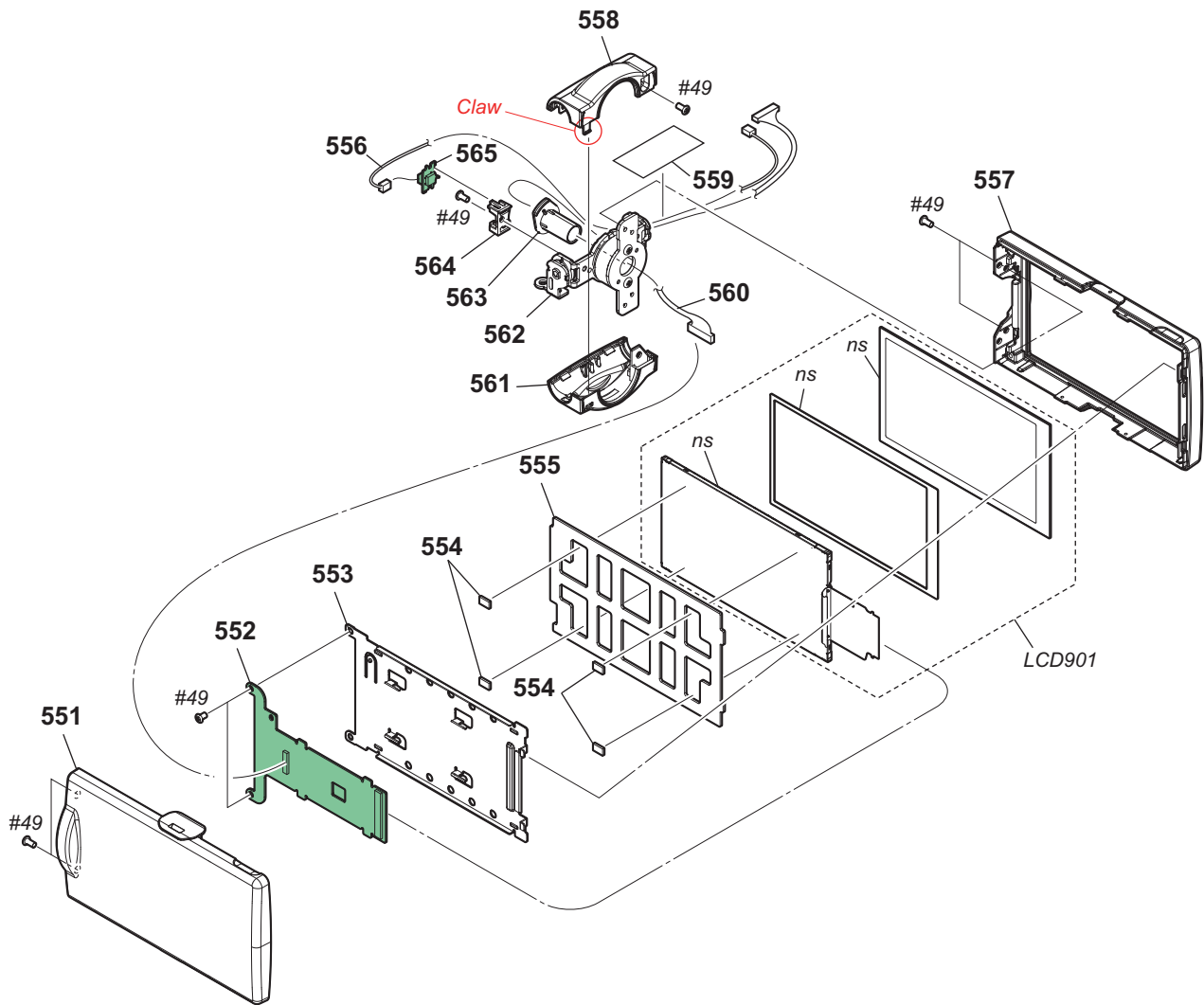
VF Block Section



Ref. No. or Q'ty	Part No.	SP Description
501	4-587-004-01	CABINET (TOP (971)), VF
502	A-2035-841-A	FP-2202 FLEXIBLE BOARD, COMPLETE
503	A-2107-469-A	VS-1001 BOARD, COMPLETE
504	1-834-869-11	CABLE, FLEXIBLE FLAT (FFC-141)
505	4-587-005-01	HOLDER (971), VF
506	4-533-011-01	DIAL, DIOPTER
507	X-2588-236-1	VF UNIT ASSY
508	4-579-427-01	SHEET (VF FPC), RADIATION
509	4-533-041-01	SHEET (L), VC RADIATION
510	4-587-012-01	HEAT SINK (971), VF
511	A-2077-291-A	VF-1018 BOARD, COMPLETE
512	4-587-006-01	BUTTON (971), VF SELECTION
513	4-587-003-01	CABINET (MAIN (971)), VF
514	X-2592-101-1	VF TILT ASSY (931)
515	4-577-911-01	CLAMPER, VF CABLE
516	4-571-218-01	SHEET (63680), HARNESS
517	4-579-426-01	SHEET (HANDLE FRONT), RADIATION
518	4-593-903-01	SHEET (0922), CUSHION
519	1-894-980-11	FP-2345 FLEXIBLE BOARD

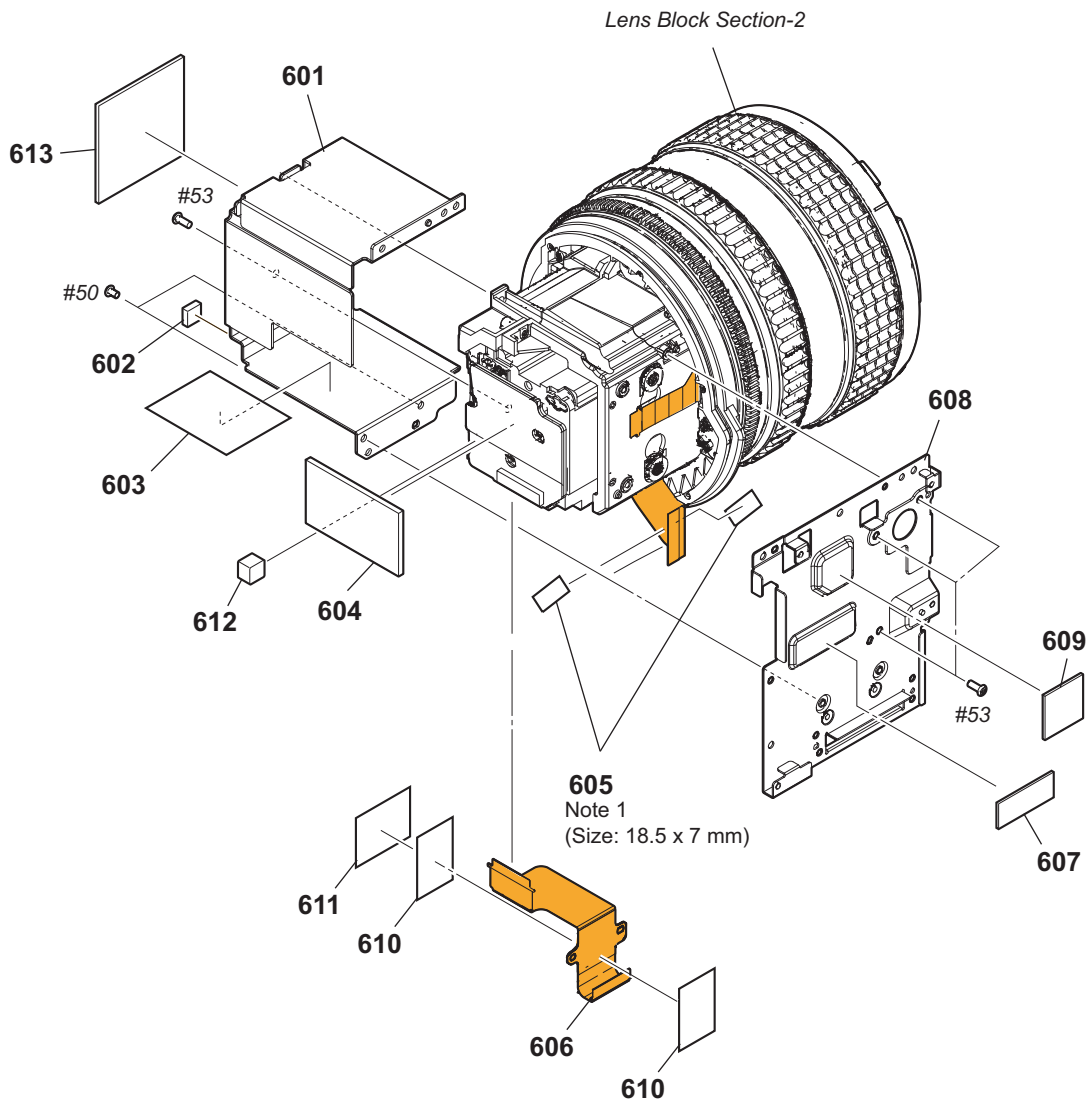
Ref. No. or Q'ty	Part No.	SP Description
520	4-583-937-01	PET SHEET (19X38)
521	4-583-936-01	SHEET (VF FPC5), RADIATION
#12	3-080-204-21	SCREW, TAPPING, P2
#53	3-080-206-21	SCREW, TAPPING, P2
LCD902	A-2047-084-A	ECX333AA-1_SERVICE

LCD Panel and Hinge Section



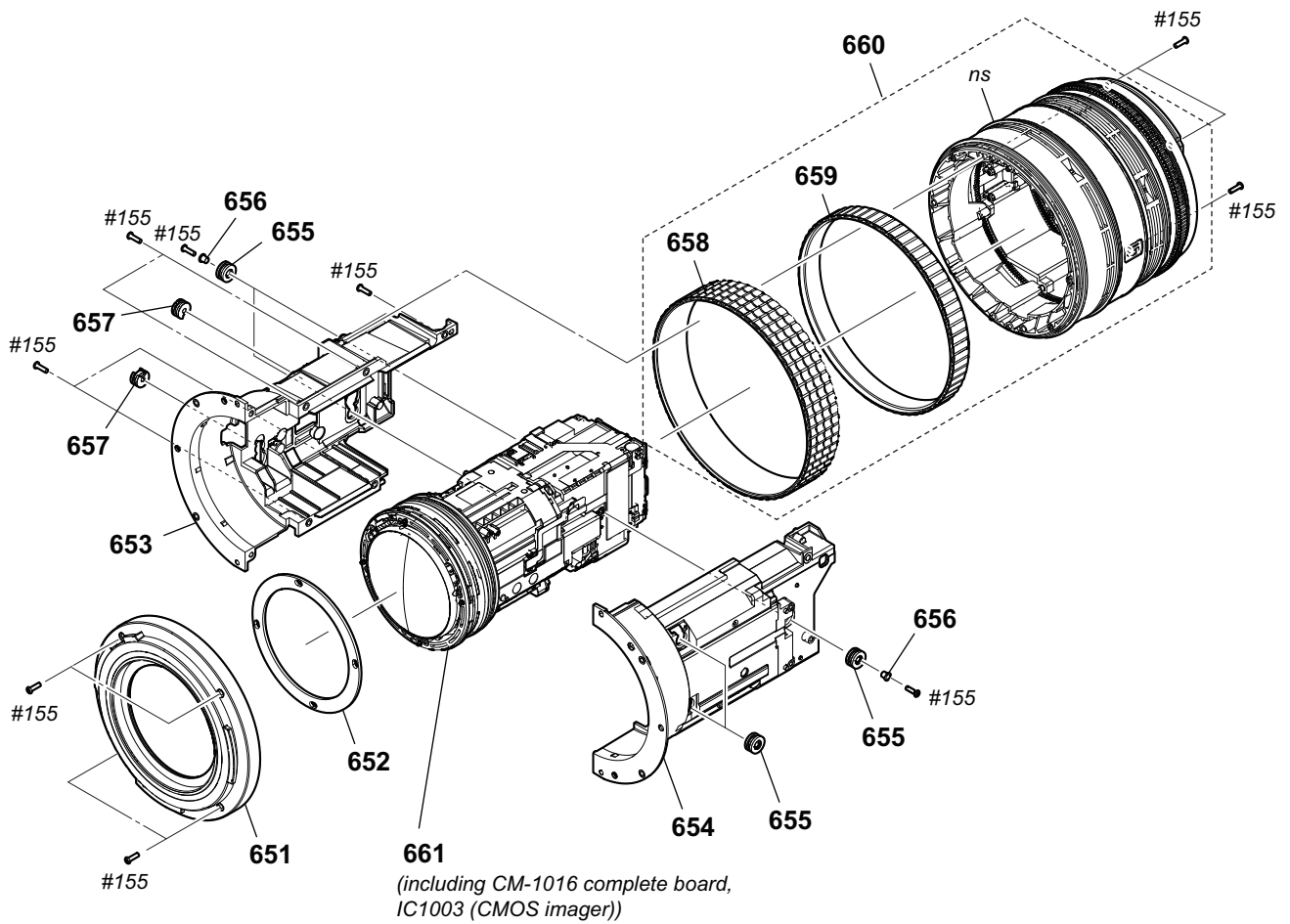
Ref. No. or Q'ty	Part No.	SP Description
551	A-2123-191-A	SERVICE, P CABINET C
552	A-2086-012-A	PD-1045 BOARD, COMPLETE
553	4-461-959-01	FRAME, PD
554	4-535-706-01	ESD GASKET
555	4-540-599-01	CUSHION, LCD
556	1-963-030-21	HARNESS (SW-116)
557	A-2123-190-A	SERVICE, P CABINET M
558	4-460-894-21	COVER (U), HINGE
559	4-583-937-01	PET SHEET (19X38)
560	1-967-783-11	HARNESS (COAXIAL CABLE)
561	4-460-895-21	COVER (O), HINGE
562	X-2592-325-1	HINGE S (40400) ASSY
563	4-460-898-01	GUARD, HARNESS
564	4-460-897-01	HOLDER, HT
565	A-2086-006-A	HT-1004 BOARD, COMPLETE
LCD901	A-2066-639-A	SERVICE, LCD BLOCK ASSY
#49	2-630-005-31	SCREW (M2), NEW TRUSTER, P2

Lens Block Section-1



Ref. No. or Q'ty	Part No.	SP Description
601	4-577-892-01	PLATE, HEAT RADIATION IMG
602	4-534-480-01	BM, GASKET
603	4-583-931-01	SHEET (LE)
604	4-577-891-01	SHEET, HEAT RADIATION IMG
605	4-583-936-01	SHEET (VF FPC5), RADIATION
606	1-894-976-11	FP-2341 FLEXIBLE BOARD
607	4-588-361-01	SHEET (1025), RADIATION
608	4-577-893-01	FRAME, VC
609	4-544-482-01	SHEET (M (913)), VC RADIATION
610	4-588-368-01	SHEET (1523), RADIATION
611	4-475-841-11	SHEET (HN)
612	4-583-929-01	GASKET (HN BASE)
613	4-588-353-01	SHEET (IN), RADIATION
#50	2-891-494-11	SCREW (M2), NEW TRUSTER, P2
#53	3-080-206-21	SCREW, TAPPING, P2

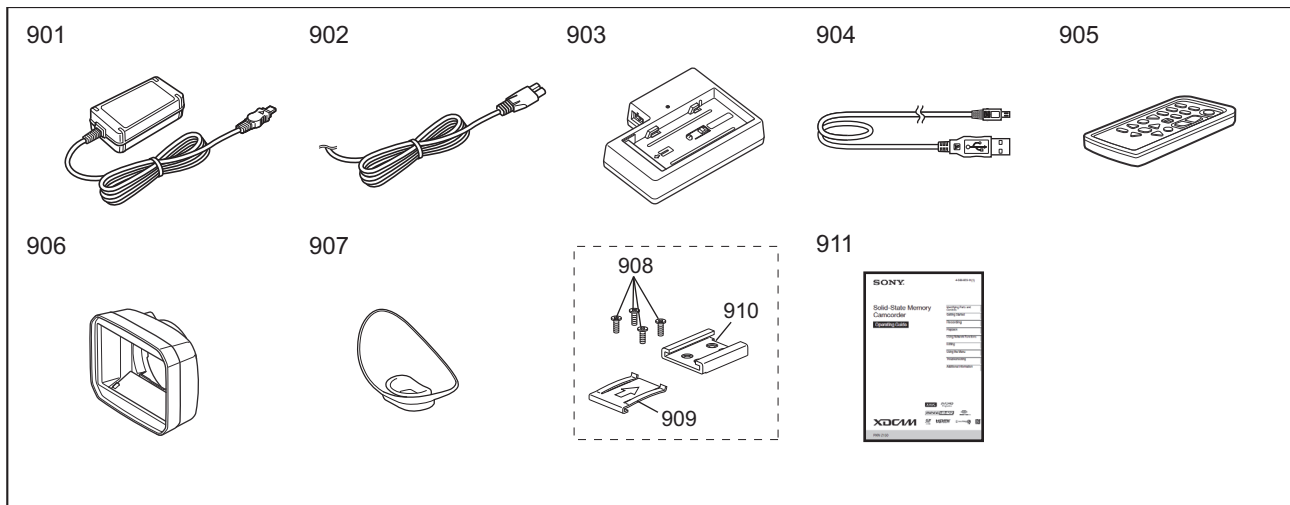
Lens Block Section-2



Ref. No. or Q'ty	Part No.	SP Description
651	4-571-749-11	RING, FRONT (1730B)
652	4-571-763-01	DUST PROTECTION SHEET A (1730B)
653	4-571-750-01	ADAPTOR L (1730B)
654	4-571-751-01	ADAPTOR R (1730B)
655	4-571-752-01	BUSHING A (1730B)
656	4-571-754-01	CYLINDER (1730B)
657	4-571-753-01	BUSHING B (1730B)
658	4-571-761-01	RUBBER, FOCUS (1730B)
659	4-571-760-01	RUBBER, ZOOM (1730B)
660	A-2103-580-A	RING ASSY (1730C), 3 GANGS
661	A-2115-065-A	1730C SERVICE
#155	3-080-204-31	SCREW, TAPPING, P2

5-3. Accessories

Except Japanese Model



Ref. No. or Q'ty	Part No.	SP Description
901	△ 1-479-286-64	AC Adaptor (AC-L100C) (UC)
901	△ 1-479-286-73	AC Adaptor (AC-L100C) (EXCEPT UC)
902	△ 1-846-101-51	Power cord (mains lead) (UC)
902	△ 1-846-428-33	Power cord (mains lead) (CEE)
902	△ 1-846-433-33	Power cord (mains lead) (CN1)
903	△ A-2089-873-A	Battery charger (BC-L1)
904	1-846-486-31	USB cable
905	1-487-540-13	Wireless Remote Commander (RMT-845)
906	X-2320-850-1	Lens hood
907	X-2592-351-1	Large eyecup
908	2-630-005-41	Screws
909	3-288-615-02	Accessory shoe plate
910	3-069-286-03	Accessory shoe
911	4-586-803-11 *	Operating Guide (ENGLISH)
911	4-586-803-21 *	Operating Guide (SIMPLIFIED CHINESE)
911	4-586-803-31 *	Operating Guide (FRENCH)
911	4-586-803-41 *	Operating Guide (GERMAN)
911	4-586-803-51 *	Operating Guide (ITALIAN)
911	4-586-803-61 *	Operating Guide (SPANISH)

Ref. No. or Q'ty	Part No.	SP Description
	△ 8-021-388-30	Rechargeable Battery Pack NP-F770/UC (UC (US, Canadian))
	△ 8-021-388-50	Rechargeable Battery Pack NP-F770/CE (CEE, UC (Except US, Canadian))
	△ 8-021-389-76	Rechargeable Battery Pack NP-F970/CN (CN1)