

**SONY**<sup>®</sup>

SOLID-STATE MEMORY CAMCORDER

**PXW-Z190V**

**PXW-Z190T**

**XDCM**<sup>™</sup> **XAVC** <sup>™</sup>

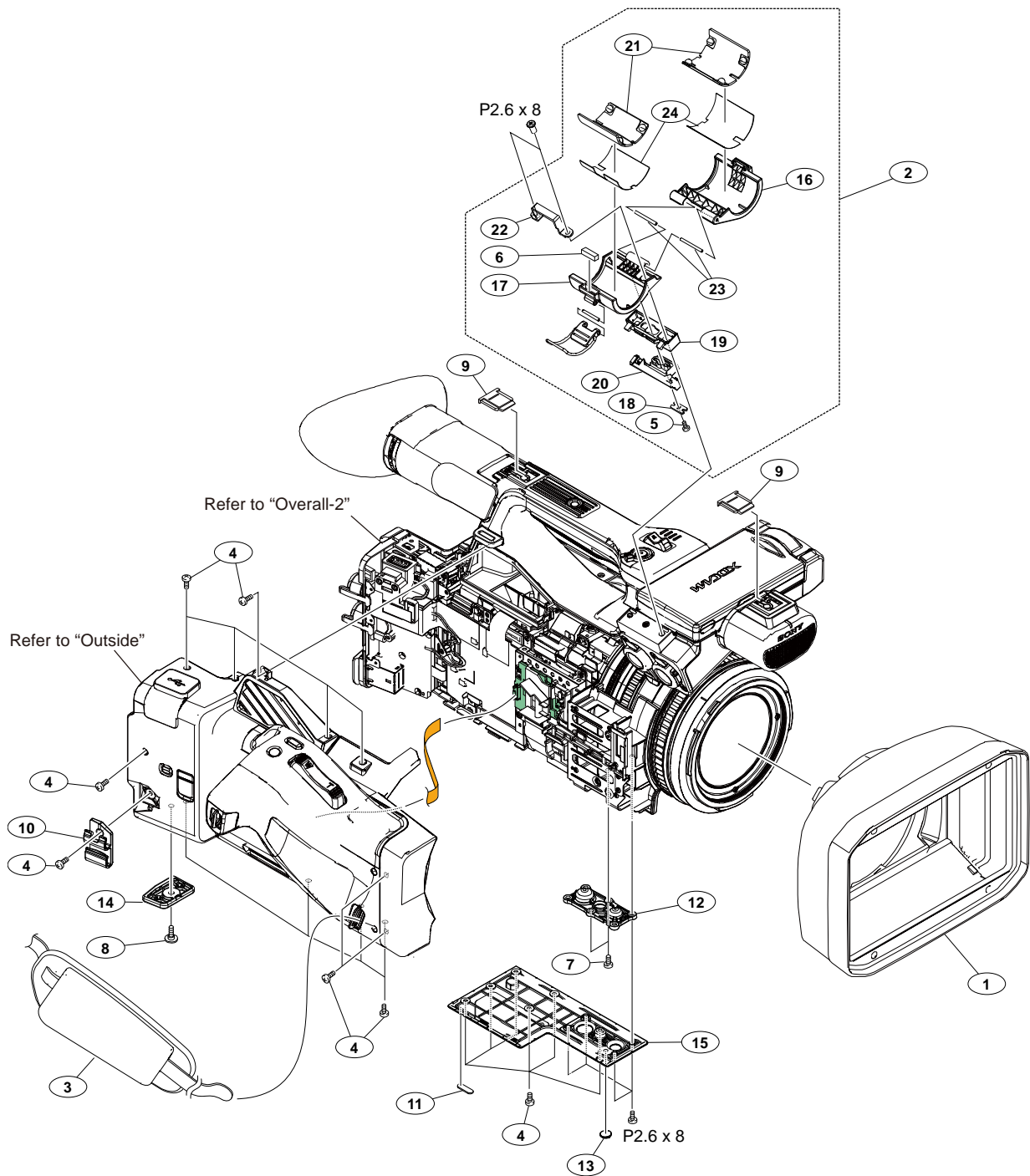
**HDMI**<sup>™</sup> *Exmor* <sup>™</sup>  
HIGH DEFINITION MULTIMEDIA INTERFACE CMOS Sensor

**SERVICE MANUAL**

1st Edition

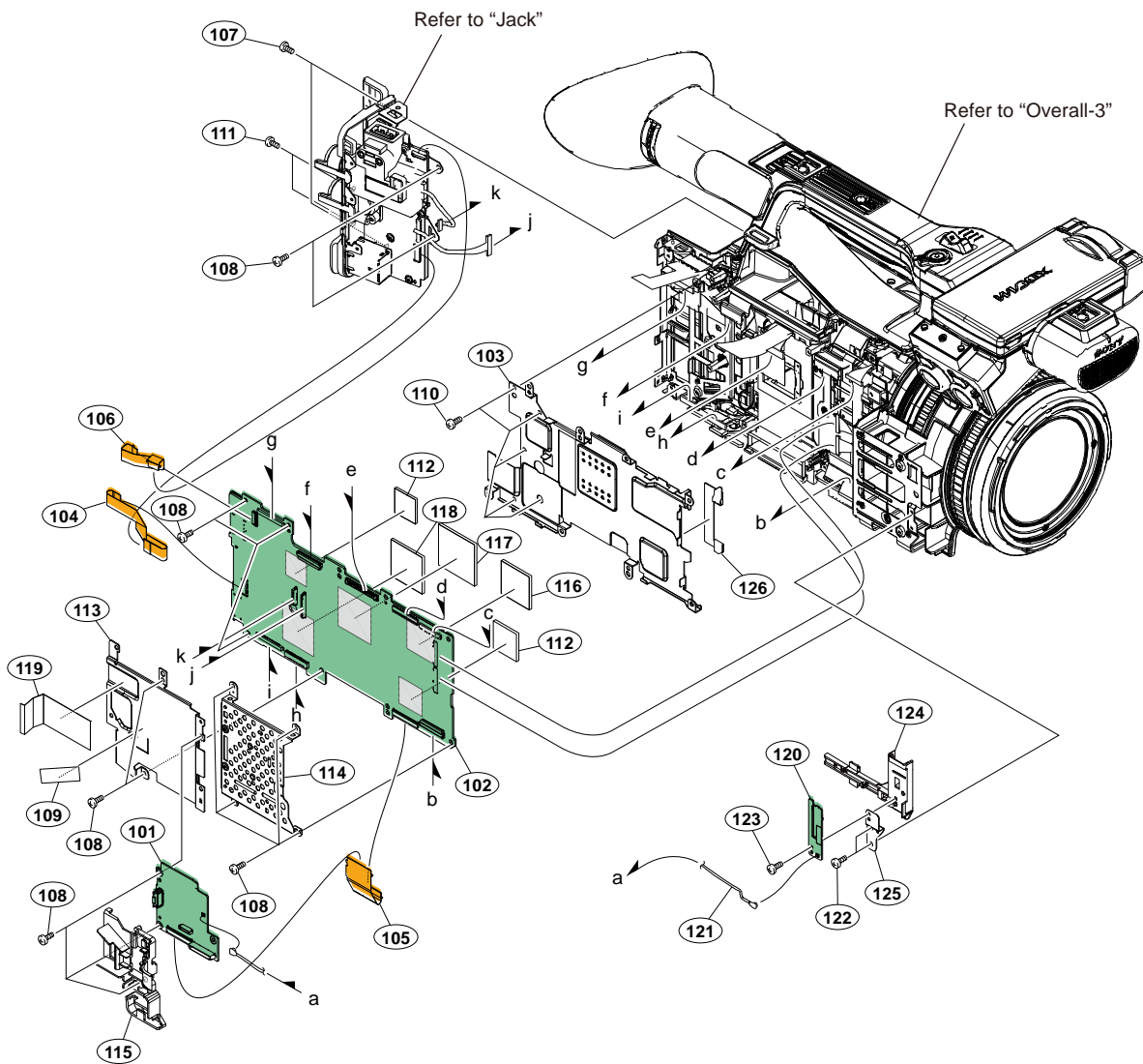
## 5-2. Exploded Views

### Overall-1



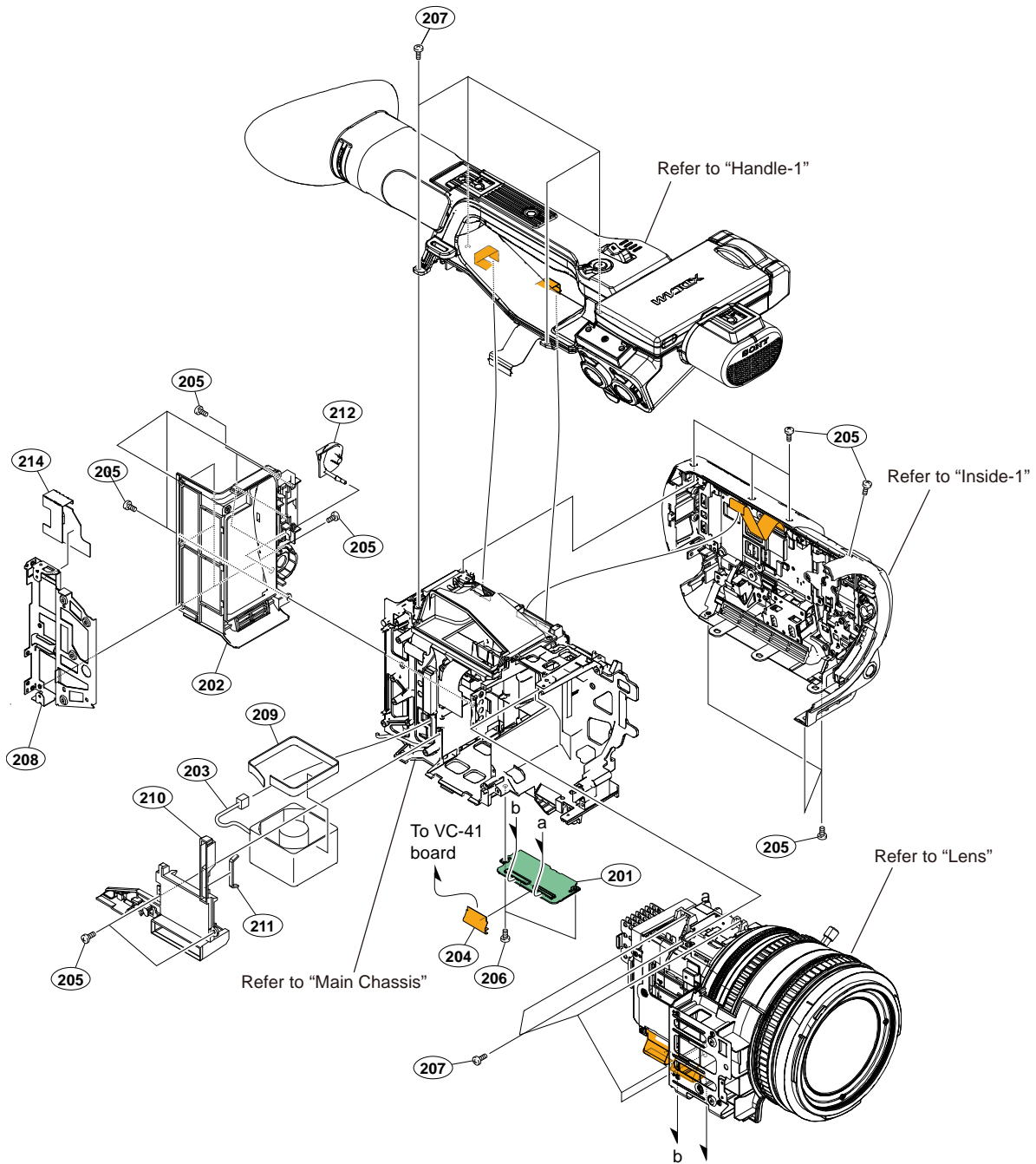
No.	Part No.	SPDescription
1	X-2589-888-4	s HOOD (941) ASSY
2	X-2596-733-1	s HOLDER (973) ASSY, MICROPHONE
3	2-178-804-02	s BELT, GRIP
4	2-630-005-31	s SCREW(M2),NEW TRUSTER,P2
5	3-080-206-21	s SCREW, TAPPING, P2
6	3-284-621-11	s CUSHION, MICROPHONE HOLDER
7	3-694-181-11	s TYPE1,AROCK PRECISION +P2.6X5
8	3-965-077-11	s SCREW, SPECIAL (M2)
9	4-438-734-12	s SHOE CAP (875)
10	4-488-856-01	o CLAMP, DC CABLE
11	4-540-533-01	s FOOT (941), RUBBER
12	4-576-418-02	s SCREW, TRIPOD
13	4-587-420-01	s LID, BM
14	4-737-145-01	s GUARD, OUT SIDE
15	4-737-160-01	s CABINET (BM)
16	4-740-435-01	s CABINET (UPPER (973)), HOLDER
17	4-740-436-01	s LOWER (973), HOLDER CABINET
18	4-740-437-01	s PLATE, MICROPHONE HOLDER
19	4-740-438-01	s BASE, MICROPHONE HOLDER
20	4-740-439-01	s INSULATOR, MICROPHONE HOLDER
21	4-740-440-01	s RUBBER (973), MICROPHONE
22	4-740-445-01	s RETAINER, MICROPHONE HOLDER
23	4-741-199-01	s SHAFT (973), MICROPHONE HOLDER
24	4-741-423-01	s SHEET (973), RUBBER ADHESIVE
	7-627-556-98	s SCREW,PRECISION +P 2.6X8 TYPE1

## Overall-2



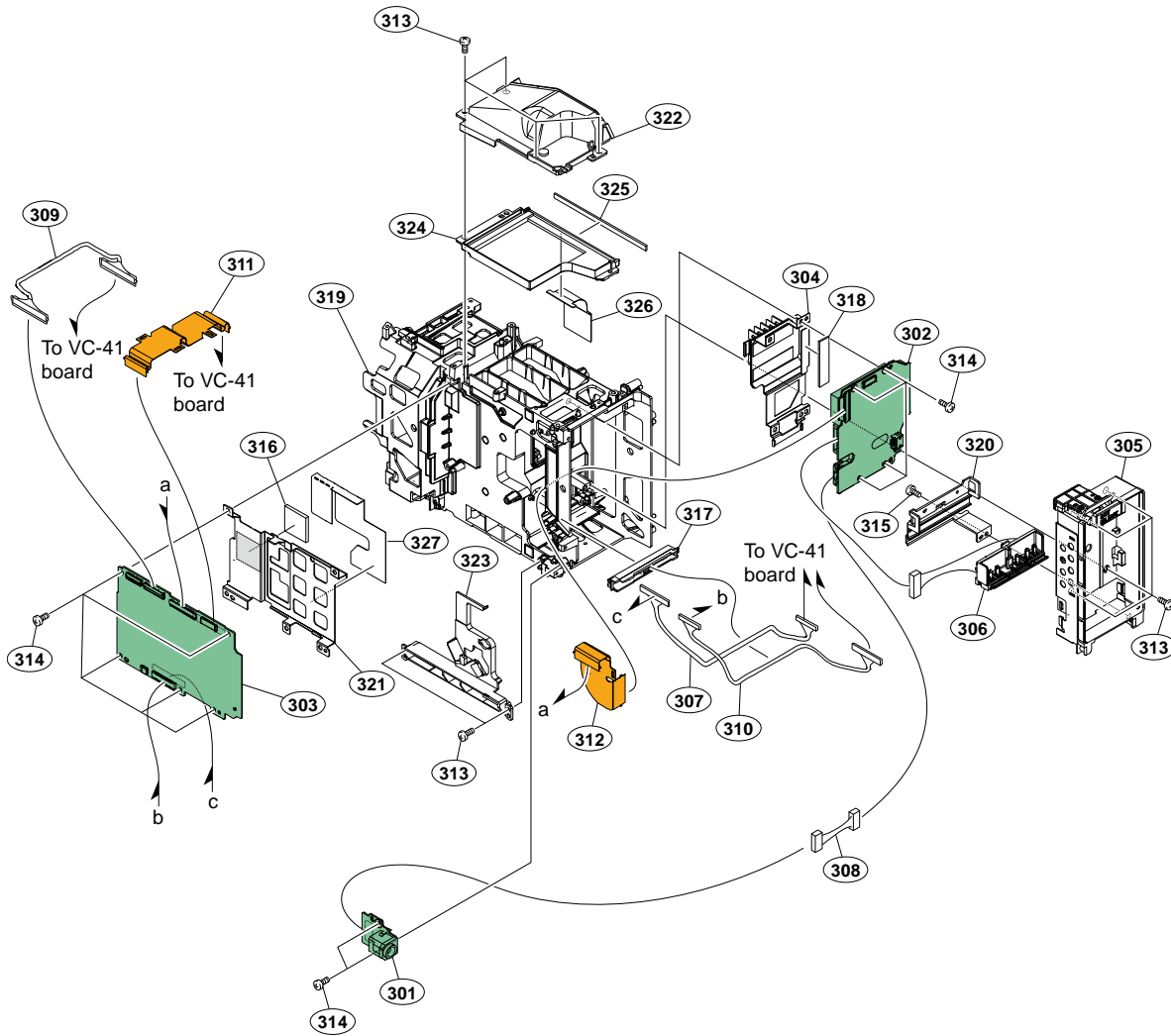
No.	Part No.	SPDescription
101	A-2195-610-A	s CT-287A MOUNT
102	A-2225-512-A	s VC-41 COMPL
103	X-2596-728-1	s HEAT SINK ASSY, VC
104	1-912-723-11	s CABLE, FLEXIBLE FLAT (18 CORE)
105	1-983-027-11	s PWB, FP-273 FLEXIBLE
106	1-983-033-11	s PWB, FP-279 FLEXIBLE
107	2-630-005-31	s SCREW(M2),NEW TRUSTER,P2
108	2-891-494-31	s SCREW(M2),NEW TRUSTER,P2
109	3-079-115-01	s TAPE AS
110	3-719-381-02	s SCREW (M2X4)
111	4-287-436-31	s SCREW (M1.7)
112	4-588-357-01	s SHEET (BT-1), RADIATION
113	4-737-122-01	s FRAME, VC SHIELD
114	4-737-124-01	s FRAME, CT
115	4-737-125-01	s INNER, CT
116	4-739-070-01	s SHEET (TG), VC RADIATION
117	4-739-071-01	s SHEET (RS), VC RADIATION
118	4-739-073-01	s SHEET (PM), VC RADIATION
119	4-739-078-01	s TAPE (VC), COPPER LEAF
120	A-2225-112-A	s WF-1008 MOUNT
121	1-846-474-31	s CABLE, COAXIAL (110MM)
122	2-891-494-31	s SCREW(M2),NEW TRUSTER,P2
123	3-080-204-21	s SCREW, TAPPING, P2
124	4-737-113-01	s HOLDER, WIFI
125	4-737-114-01	s SHEET METAL, WIFI GND
126	4-739-074-01	s SHEET (IM), PROTECTION

# Overall-3



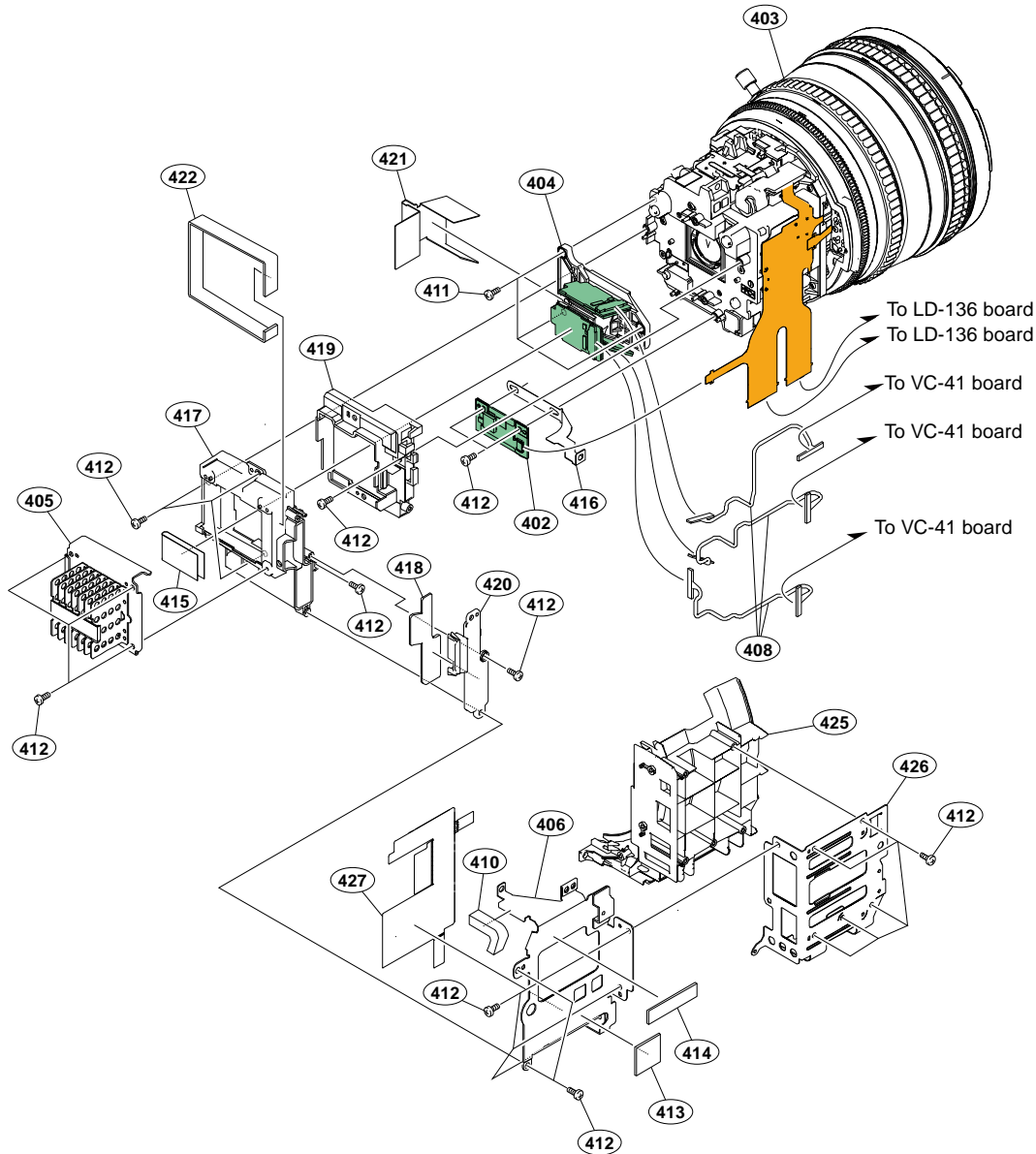
No.	Part No.	SPDescription
201	A-2194-018-A	s LD-136 MOUNT
202	X-2596-722-1	s PANEL ASSY (972), BT
203	△ 1-855-374-11	s DC FAN
204	1-893-191-11	s FP-2244 FLEXIBLE PWB
205	2-630-005-31	s SCREW(M2),NEW TRUSTER,P2
206	2-891-494-31	s SCREW(M2),NEW TRUSTER,P2
207	3-694-181-11	s TYPE1,AROCK PRECISION +P2.6X5
208	4-736-983-01	s FRAME, MAIN REAR
209	4-736-984-01	s CUSHION, FAN
210	4-736-985-01	s HOLDER, FAN
211	4-737-092-01	s CUSHION (DUCT) S, IM
212	4-737-175-01	s LID (972), DC
214	4-741-103-01	s SHEET (VC), PROTECTION

# Main Chassis



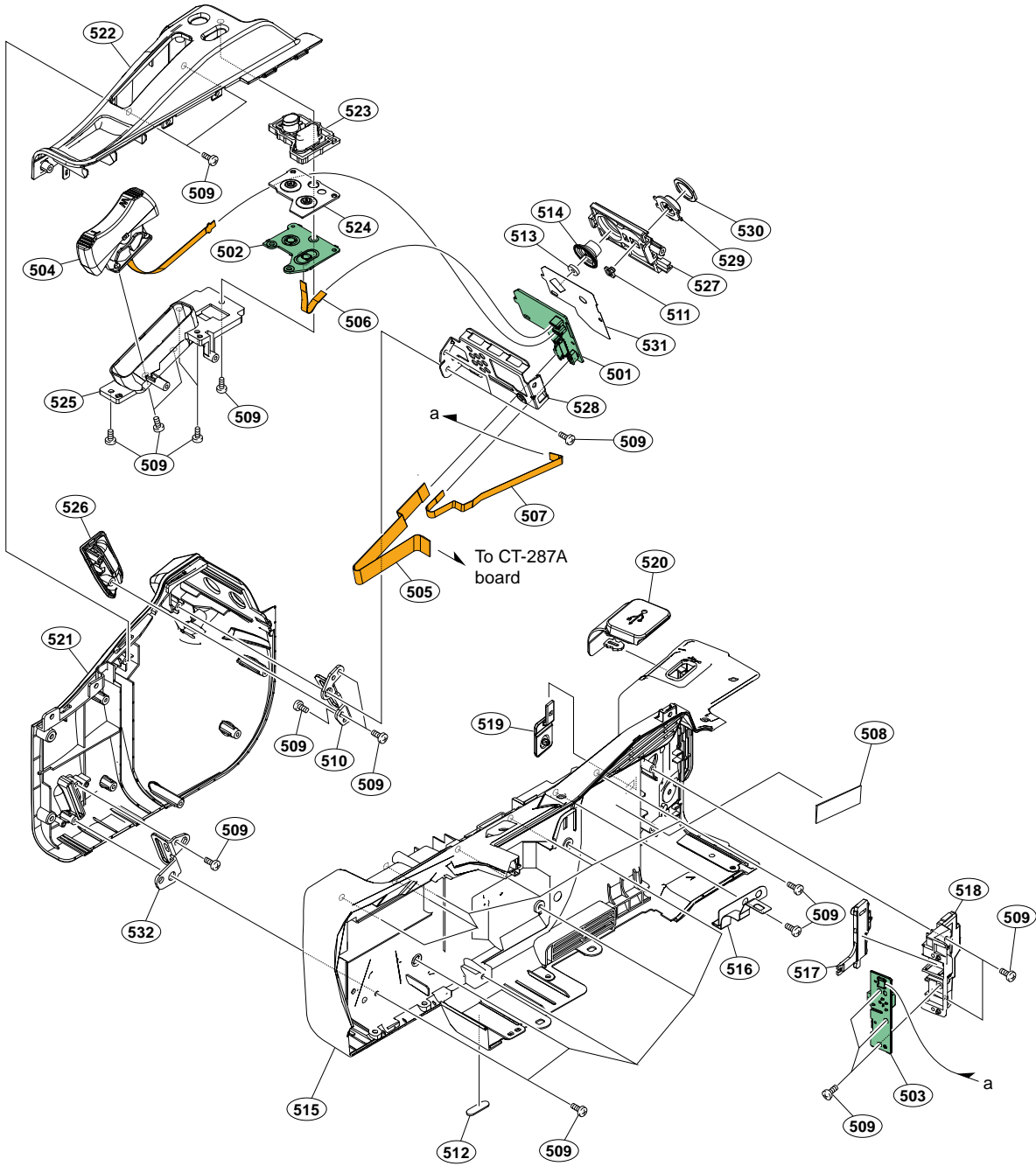
No.	Part No.	SPDescription
301	A-2193-977-A	s DC-184 MOUNT
302	A-2225-398-A	s DD-53 COMPL
303	A-2225-511-A	s AR-5 COMPL
304	X-2596-715-1	s HEAT SINK ASSY, DD
305	X-2596-716-1	s HOLDER ASSY, BT
306	△ 1-780-986-11	s TERMINAL BOARD, BATTERY
307	1-969-036-11	s HARNESS (DPR-CMOS B)
308	△ 1-970-362-11	s HARNESS (DD-1012)
309	1-972-386-11	s HARNESS (VC-AR-50P)
310	1-972-418-11	s HARNESS(VC-AR-40P)
311	1-983-029-11	s PWB, FP-275 FLEXIBLE
312	1-983-036-11	s PWB, FP-282 FLEXIBLE
313	2-630-005-31	s SCREW(M2),NEW TRUSTER,P2
314	2-891-494-31	s SCREW(M2),NEW TRUSTER,P2
315	3-080-206-21	s SCREW, TAPPING, P2
316	4-588-357-01	s SHEET (BT-1), RADIATION
317	4-736-978-01	s CLAMP, DD
318	4-736-980-01	s SHEET, DD RADIATION
319	4-736-986-01	s CHASSIS, MAIN
320	4-736-991-01	s SUPPORT, TERMINAL
321	4-736-992-01	s HEAT SINK, AR
322	4-736-994-01	s COVER (UPPER), DUCT
323	4-736-995-01	s COVER (LOWER), DUCT
324	4-736-996-02	s GUIDE, DUCT COVER
325	4-737-177-01	s CUSHION, DUCT COVER
326	4-739-075-01	s SHEET (DUCT), PROTECTION
327	4-743-765-01	s SHEET (AR), PROTECTION
	7-627-556-58	s SCREW +P 2.6X5

# Lens



No.	Part No.	SPDescription
402	A-2226-152-A	s SE-1187 COMPL
403	A-2226-549-A	s LENS, LSV-1740B SERVICE
404	A-2226-666-A	s LSV-1620C(RP)
405	X-2596-727-1	s HEAT SINK ASSY, IM
406	X-2596-731-1	s SUB FRAME ASSY, VC
408	1-972-329-11	s HARNESS (COAXIAL 48P)
410	3-079-115-01	s TAPE AS
412	3-080-206-21	s SCREW, TAPPING, P2
413	4-544-482-01	s SHEET (M (913)), VC RADIATION
414	4-736-980-01	s SHEET, DD RADIATION
415	4-736-993-01	s SHEET, AR RADIATION
416	4-737-038-01	s TAPE (LENS), GND
417	4-737-102-01	s COVER (972), IM
418	4-737-103-01	s CUSHION, IM COVER
419	4-737-105-01	s CLAMP (972), IM
420	4-737-106-01	s LID, IM COVER
421	4-737-110-01	s SHEET (972), IM RADIATION
422	4-737-112-01	s CUSHION (DUCT), IM
425	4-737-115-01	s CABINET, LENS
426	4-737-116-01	s FRAME, LENS SUB
427	4-740-441-01	s SHEET (LE), PROTECTION

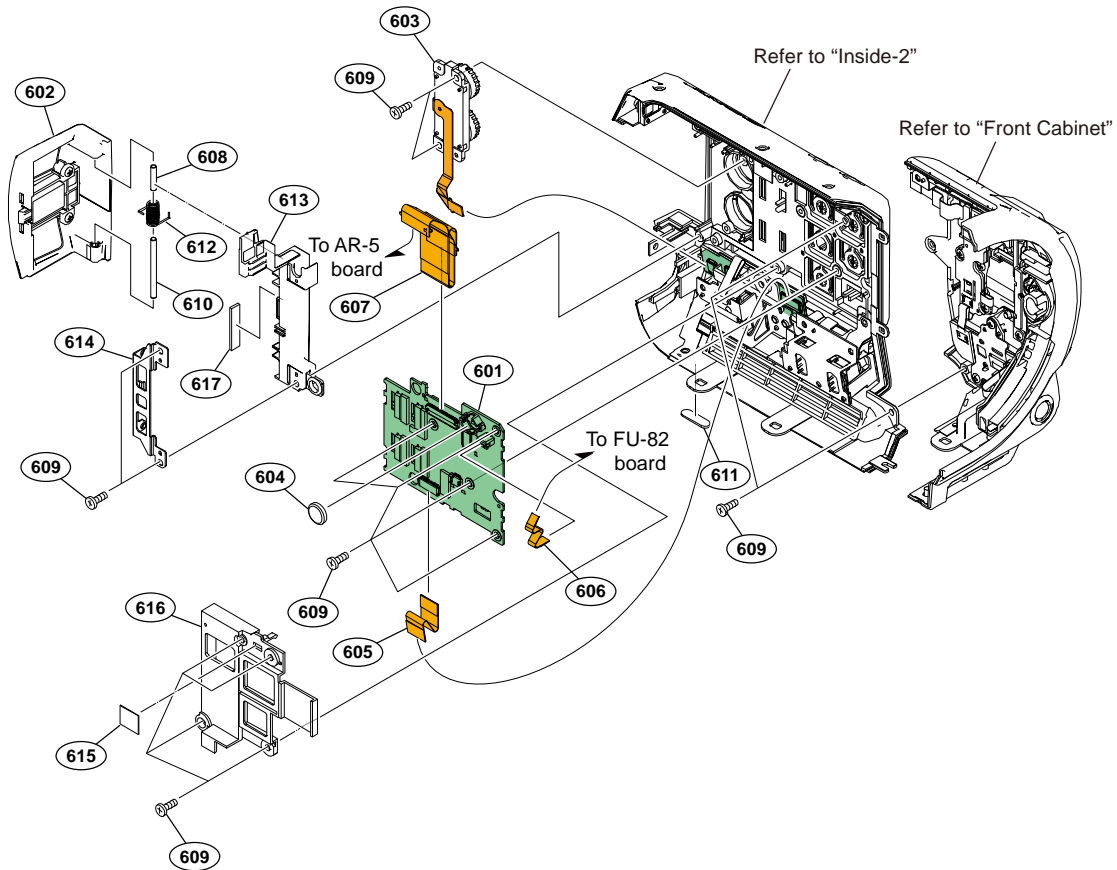
# Outside





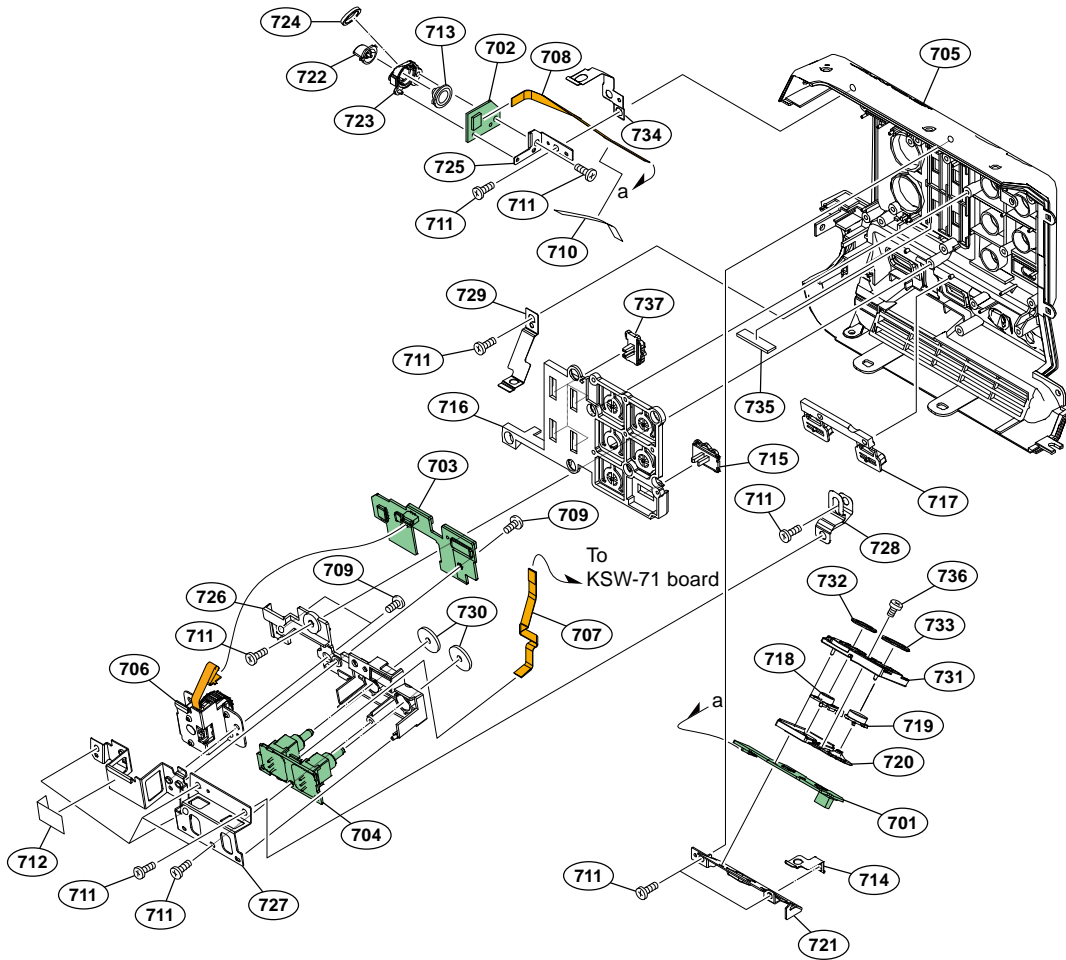
No.	Part No.	SPDescription
501	A-2193-988-A	s SS-107 MOUNT
502	A-2194-011-A	s SW-1735 MOUNT
503	A-2194-012-A	s TC-117 MOUNT
504	1-493-502-11	s SWITCH BLOCK CONTROL(PZ97300)
505	1-912-724-11	s CABLE, FLEXIBLE FLAT (16 CORE)
506	1-912-725-11	s CABLE, FLEXIBLE FLAT (6 CORE)
507	1-912-732-11	s CABLE, FLEXIBLE FLAT (6 CORE)
508	3-079-115-01	s TAPE AS
509	3-080-206-21	s SCREW, TAPPING, P2
510	4-165-331-01	s BRACKET (REAR), GRIP BELT
511	4-299-985-11	s RUBBER, SS
512	4-540-533-01	s FOOT (941), RUBBER
513	4-541-676-21	s SHEET (G), MUFFLE
514	4-544-480-01	s JOYSTICK
515	4-737-141-01	s CABINET (972), OUT SIDE
516	4-737-142-01	s TAPE (OUT SIDE), GND
517	4-737-143-01	s LEVER, TC SELECT
518	4-737-144-01	s HOLDER, TC SELECT LEVER
519	4-737-146-01	s LID, REMOTE
520	4-737-147-01	s LID (TOP), USB
521	4-737-148-01	s CABINET, GRIP
522	4-737-149-01	s CABINET, GRIP (UPPER)
523	4-737-150-01	s BUTTON (GRIP), ASSIGN
524	4-737-151-01	s PACKING (ASSIGN)
525	4-737-152-01	s CASE, ZOOM
526	4-737-153-01	s COVER, GRIP BELT
527	4-737-154-01	s BASE, SS
528	4-737-155-01	s FRAME, SS
529	4-737-156-01	s BUTTON, REC
530	4-737-157-01	s CUSHION (SS)
531	4-737-158-01	s SHEET (SS)
532	4-737-159-01	s BRACKET (FRONT), GRIP BELT

## Inside-1



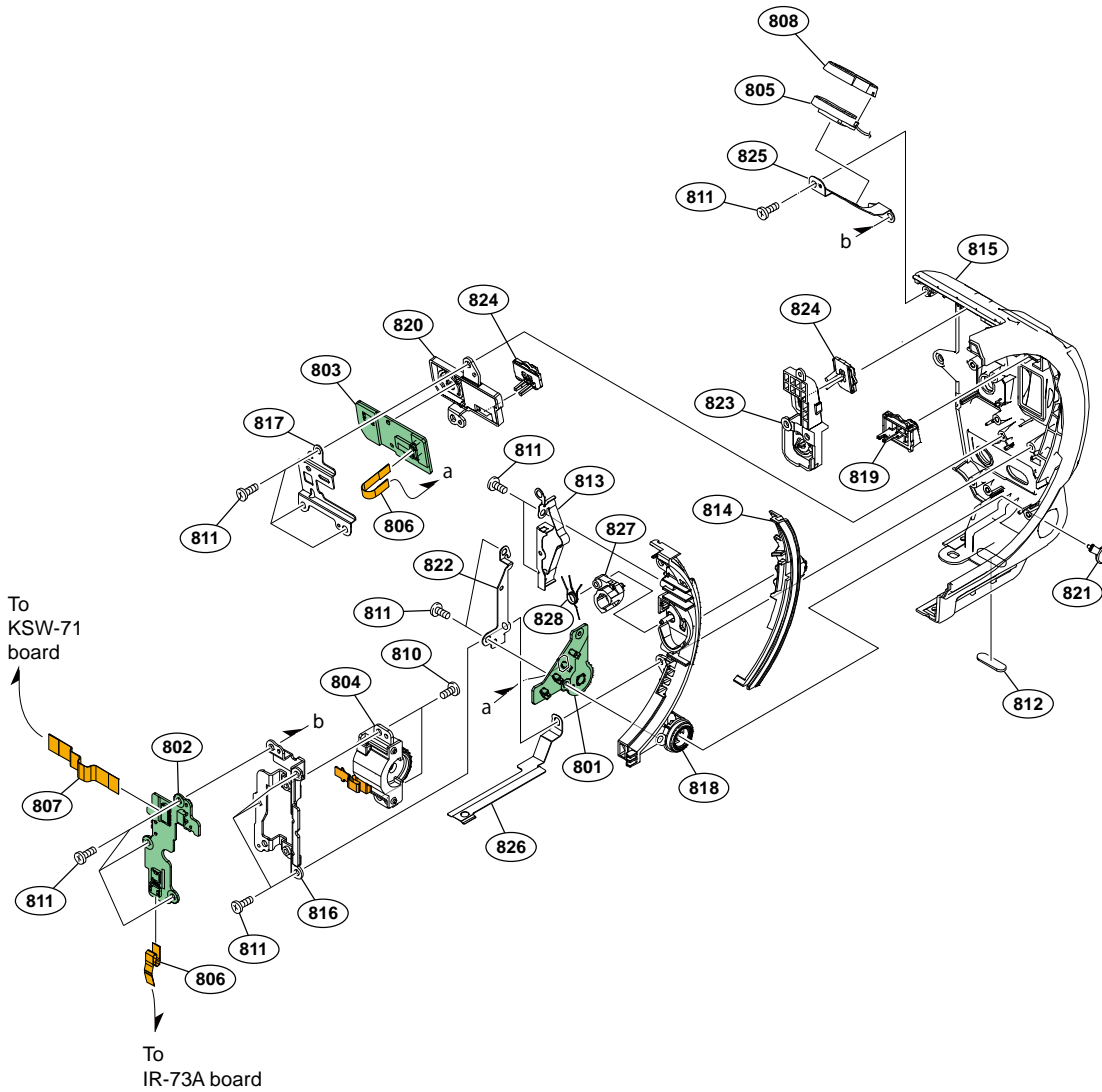
No.	Part No.	SPDescription
601	A-2193-986-A	s KSW-71 MOUNT
602	X-2596-726-1	s LID ASSY (972), ME
603	1-493-503-11	s SWITCH BLOCK CONTROL(AU97300)
604	△ 1-756-134-18	s BATTERY, LITHIUM (SECONDARY)
605	1-912-729-11	s CABLE, FLEXIBLE FLAT (16 CORE)
606	1-912-734-11	s CABLE, FLEXIBLE FLAT (6 CORE)
607	1-983-038-11	s PWB, FP-284 FLEXIBLE
608	2-249-361-01	s PIN, PARALLEL
609	3-080-206-21	s SCREW, TAPPING, P2
610	3-703-358-09	s PIN, PARALLEL (DIA. 2X25)
611	4-540-533-01	s FOOT (941), RUBBER
612	4-737-074-01	s SPRING, COVER
613	4-737-076-01	s RETAINER (972), ME SHAFT
614	4-737-077-01	s PLATE, REAR FIXED
615	4-737-081-01	s SHEET (AU)
616	4-737-093-01	s CLAW, AU LID LOCK
617	4-737-180-01	s CUSHION, ME LID

# Inside-2



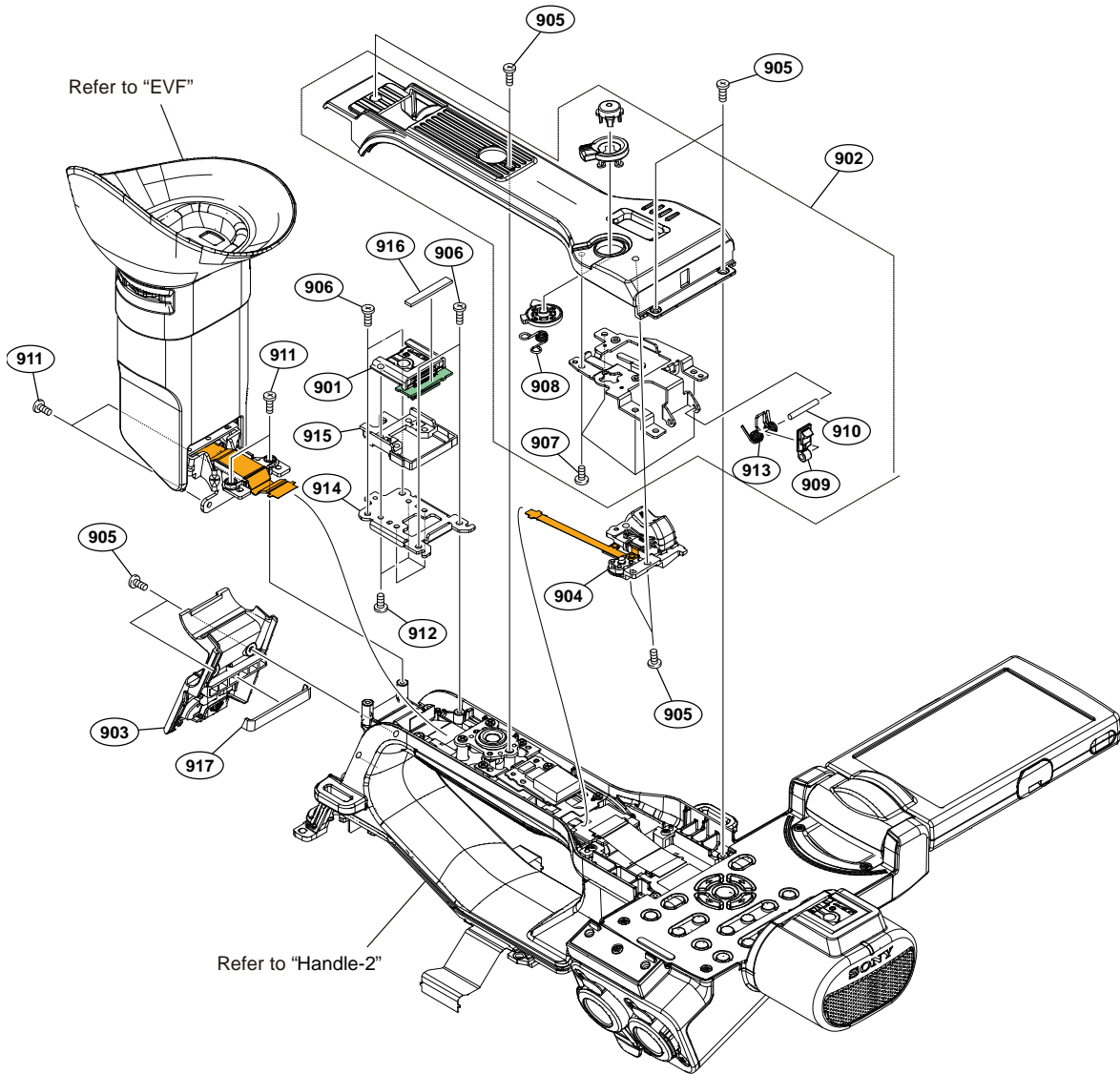
No.	Part No.	SPDescription
701	A-2201-099-A	s FU-82 MOUNT
702	A-2201-100-A	s SEC-58 MOUNT
703	A-2203-445-A	s MEC-43A MOUNT
704	A-2226-711-A	s TG-289A MOUNT
705	X-2596-724-1	s CABINET ASSY (972), IN SIDE
706	1-492-342-11	s SWITCH BLOCK, CONTROL(KP40400)
707	1-912-730-11	s CABLE, FLEXIBLE FLAT (6 CORE)
708	1-912-733-11	s CABLE, FLEXIBLE FLAT (6 CORE)
709	2-891-494-31	s SCREW(M2),NEW TRUSTER,P2
710	3-079-115-01	s TAPE AS
711	3-080-206-21	s SCREW, TAPPING, P2
712	4-571-218-01	s SHEET (63680), HARNESS
713	4-737-066-01	s PACKING (SE)
714	4-737-073-01	s TAPE (FU), GND
715	4-737-079-01	s SELECTION, SHUTTER
716	4-737-080-01	s BUTTON (IN SIDE), ASSIGN
717	4-737-082-01	s BUTTON, MENU-CANCEL
718	4-737-084-01	s BUTTON, FULL AUTO
719	4-737-085-01	s BUTTON (IN SIDE TOP), ASSIGN
720	4-737-086-01	s PACKING (FU)
721	4-737-087-01	s FRAME, FU
722	4-737-088-01	s BUTTON, SLOT/SELECT
723	4-737-089-01	s HOLDER, SLOT/SELECT BUTTON
724	4-737-090-01	s CUSHION (SE)
725	4-737-091-01	s FRAME, SE
726	4-737-094-01	s HOLDER, TG
727	4-737-095-01	s FRAME, TG
728	4-737-096-01	s TAPE (IN SIDE FRONT), GND
729	4-737-097-01	s TAPE (INSIDE REAR), GND
730	4-737-099-01	s CUSHION (TG)
731	4-737-174-01	s HOLDER, FULL AUTO BUTTON
732	4-737-178-01	s CUSHION (FU)
733	4-737-179-01	s CUSHION (AS)
734	4-737-181-01	s TAPE (SE) (972), GND
735	4-741-338-01	s CUSHION (973), AU LID
736	2-630-005-31	s SCREW(M2),NEW TRUSTER,P2
737	4-577-842-01	s SW, AU SLIDE

# Front Cabinet



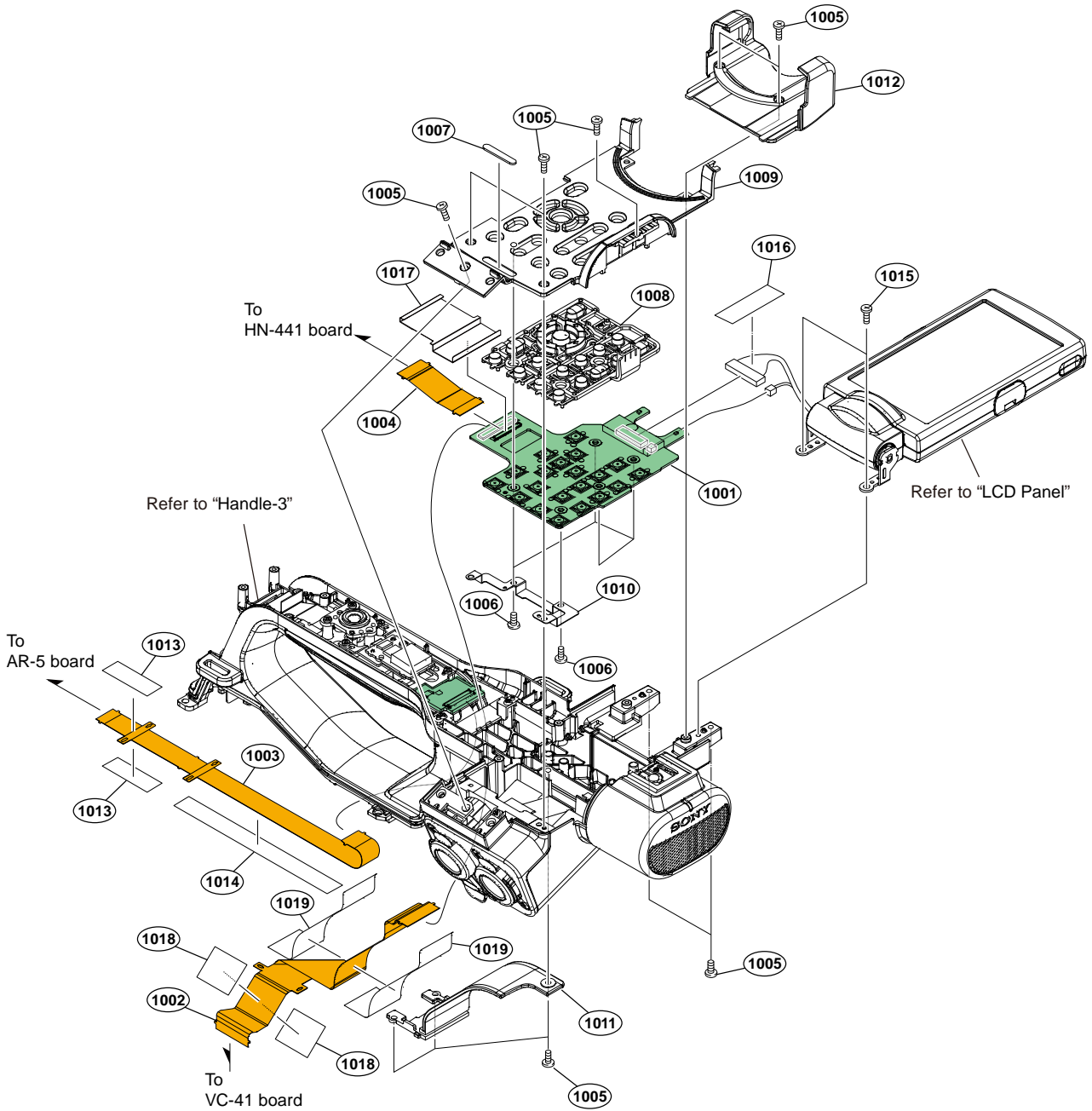
No.	Part No.	SPDescription
801	A-2194-008-A	s GCN-19 MOUNT
802	A-2195-613-A	s VSW-81A MOUNT
803	A-2195-614-A	s IR-73A MOUNT
804	1-492-897-11	s SWITCH BLOCK CONTROL (ID94100)
805	1-858-706-23	s LOUDSPEAKER (1.8CM)
806	1-912-725-11	s CABLE, FLEXIBLE FLAT (6 CORE)
807	1-912-731-11	s CABLE, FLEXIBLE FLAT (12 CORE)
808	2-178-550-01	s HOLDER, SPEAKER
810	2-891-494-31	s SCREW(M2),NEW TRUSTER,P2
811	3-080-206-21	s SCREW, TAPPING, P2
812	4-540-533-01	s FOOT (941), RUBBER
813	4-540-615-01	s CLICK (SP), ND
814	4-540-616-01	s KNOB, ND
815	4-737-049-01	s CABINET (972), FRONT
816	4-737-050-01	s FRAME, CMR DIAL
817	4-737-051-01	s FRAME, IRIS
818	4-737-052-01	s BASE, ND
819	4-737-053-01	s KNOB (CMR), MODE
820	4-737-055-01	s BUTTON (972), IRIS
821	4-737-056-01	s BUTTON, WB
822	4-737-057-01	s FRAME, GCN
823	4-737-058-01	s BUTTON, FOCUS
824	4-737-059-01	s SWITCH, IRIS SLIDE
825	4-737-060-01	s RETAINER, SPEAKER
826	4-737-061-01	s TAPE (FRONT), GND
827	4-540-618-01	s LEVER, CMR LINK
828	4-540-619-01	s LEVER (SP), CMR LINK

# Handle-1



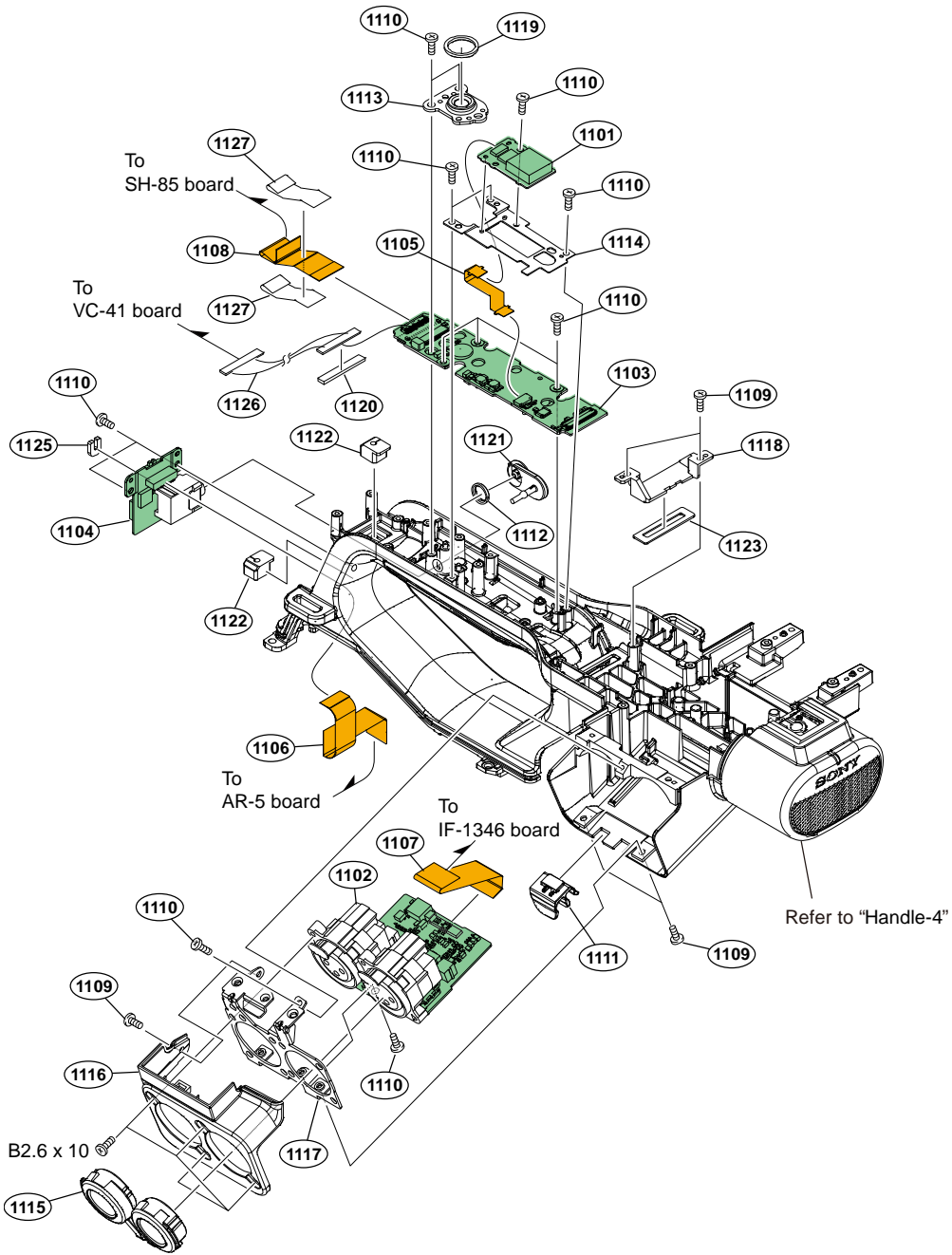
No.	Part No.	SPDescription
901	A-2193-985-A	s SH-85 MOUNT
902	X-2596-718-1	s CABINET ASSY, HANDLE (TOP)
903	X-2596-719-1	s CABINET ASSY, HANDLE (REAR)
904	1-480-298-11	s SWITCH BLOCK, CONTROL(GZ92000)
905	2-630-005-31	s SCREW(M2),NEW TRUSTER,P2
906	2-891-494-31	s SCREW(M2),NEW TRUSTER,P2
907	3-080-206-21	s SCREW, TAPPING, P2
908	3-288-483-01	s SPRING, SS LOCK
909	3-288-511-02	s CLAW, LOCK
910	3-703-358-06	s PIN, PARALLEL (DIA. 2X14)
911	3-719-381-02	s SCREW (M2X4)
912	4-287-436-31	s SCREW (M1.7)
913	4-577-882-01	s SPRING, LCD LOCK
914	4-737-034-01	s BRACKET (REAR), MI
915	4-737-036-01	s HOLDER (REAR), MI
916	4-737-040-01	s SHEET (MI), WATERPROOF
917	4-737-182-01	s SHEET (HN REAR), WATERPROOF

## Handle-2



No.	Part No.	SPDescription
1001	A-2193-980-A	s IF-1346 MOUNT
1002	1-983-032-11	s PWB, FP-278 FLEXIBLE
1003	1-983-037-11	s PWB, FP-283 FLEXIBLE
1004	1-983-039-11	s PWB, FP-285 FLEXIBLE
1005	2-630-005-31	s SCREW(M2),NEW TRUSTER,P2
1006	3-080-206-21	s SCREW, TAPPING, P2
1007	3-288-474-01	s RUBBER, PANEL RETAINER
1008	4-165-373-31	s BUTTON, CONTROL
1009	4-737-015-01	s PANEL, CONTROL
1010	4-737-016-01	s PLATE, PANEL ELECTROSTATIC
1011	4-737-029-01	s CABINET (FRONT), HANDLE
1012	4-737-030-01	s CABINET (HORIZONTAL), HANDLE
1013	4-739-076-01	s SHEET EFF03 (HN) S
1014	4-739-077-01	s SHEET EFF03 (HN) L
1015	3-694-181-11	s TYPE1,AROCK PRECISION +P2.6X5
1016	3-079-115-01	s TAPE AS
1017	4-744-166-01	s SHEET (IF), WATERPROOF
1018	4-746-343-01	s SHEET (EPX6 (HN)) M
1019	4-746-344-01	s SHEET (EPX6 (HN)) L

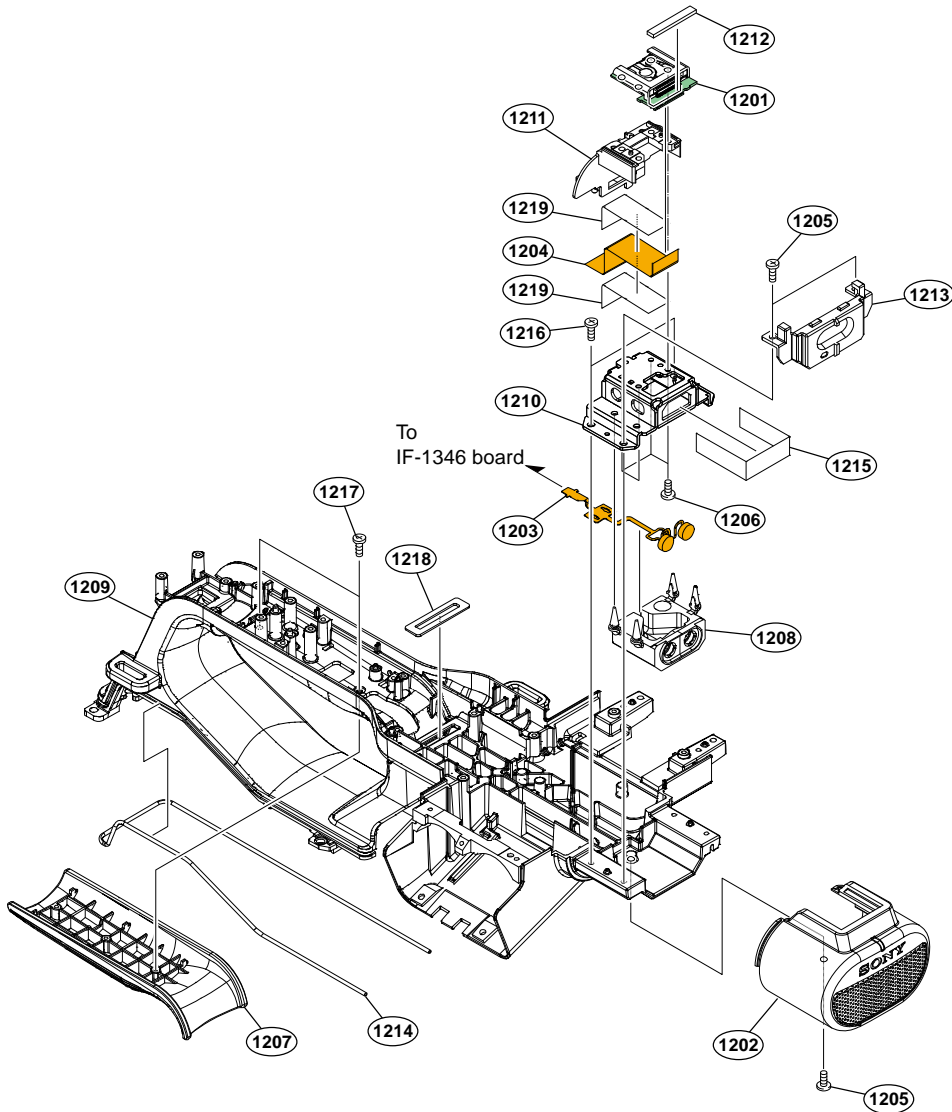
# Handle-3





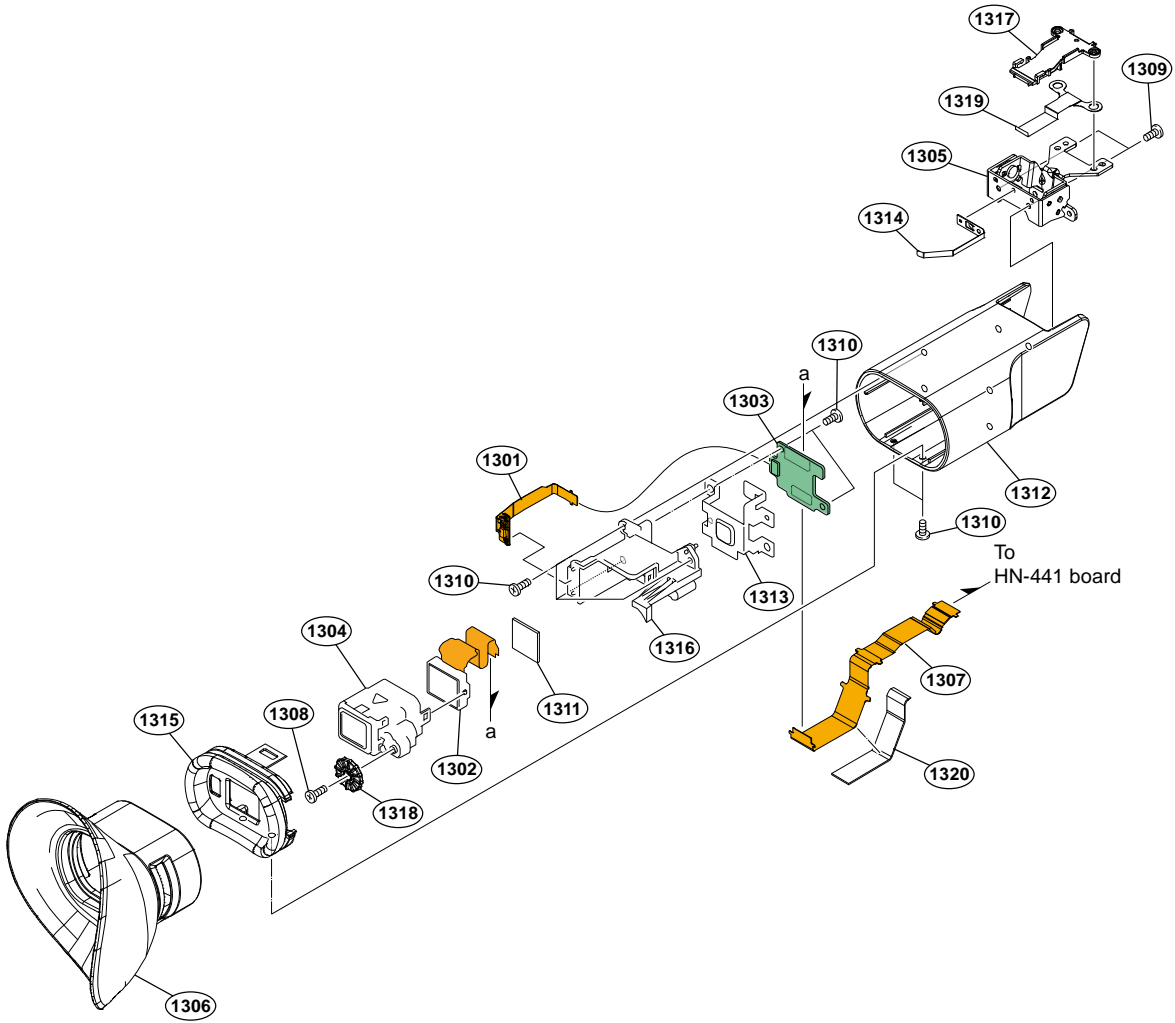
No.	Part No.	SPDescription
1101	A-2059-048-A	s GP-1019COMPLE(SN11)
1102	A-2193-982-A	s AXM-60 MOUNT
1103	A-2193-984-A	s HN-441 MOUNT
1104	A-2193-987-A	s PSW-109 MOUNT
1105	1-893-019-11	s FP-2231 FLEXIBLE PWB
1106	1-912-726-11	s CABLE, FLEXIBLE FLAT (20 CORE)
1107	1-912-727-11	s CABLE, FLEXIBLE FLAT (26 CORE)
1108	1-912-728-11	s CABLE, FLEXIBLE FLAT (24 CORE)
1109	2-630-005-31	s SCREW(M2),NEW TRUSTER,P2
1110	2-891-494-31	s SCREW(M2),NEW TRUSTER,P2
1111	2-892-095-01	s CLAMP, CABLE
1112	3-061-234-01	s NUT (M6X0.5)
1113	4-269-035-01	s PLATE, SHOE TRIPOD
1114	4-540-586-01	s BRACKET (GP)
1115	4-577-874-01	s COVER, XLR RUBBER
1116	4-737-031-01	s COVER, XLR
1117	4-737-032-01	s BRACKET, XL
1118	4-737-037-02	s RETAINER (FRONT), FPC
1119	4-737-039-01	s SHEET (TRIPOD WASHER)
1120	4-737-040-01	s SHEET (MI), WATERPROOF
1121	4-737-041-01	s COVER, HP JACK
1122	4-737-042-01	s GROMMET (HN)
1123	4-737-083-01	s SHEET (HN), WATERPROOF
1125	4-741-206-01	s SHEET (HN), LIGHT INTERCEPTION
1126	1-969-036-11	s HARNESS (DPR-CMOS B)
1127	4-746-342-01	s SHEET (EFX6 (HN)) S
	7-685-535-19	s SCREW +BTP 2.6X10 TYPE2 N-S

## Handle-4



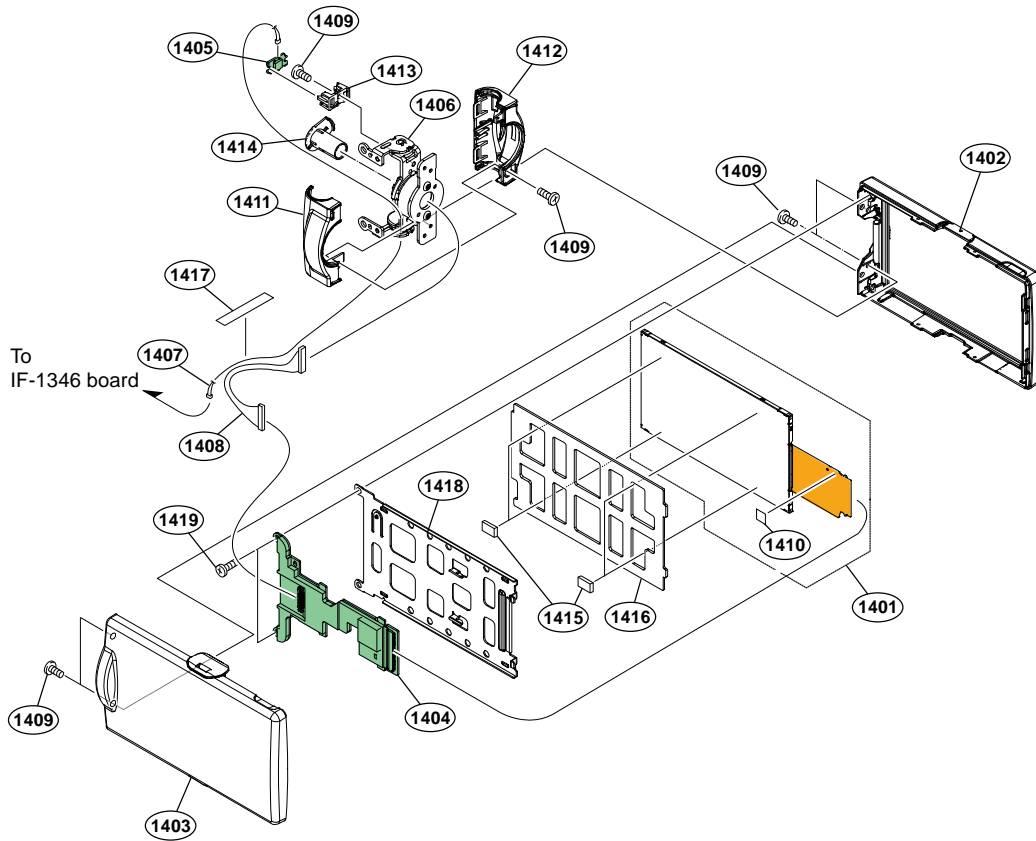
No.	Part No.	SPDescription
1201	A-2193-985-A	s SH-85 MOUNT
1202	X-2596-720-1	s CABINET ASSY, MICROPHONE
1203	1-894-979-11	s MIC UNIT
1204	1-912-728-11	s CABLE, FLEXIBLE FLAT (24 CORE)
1205	2-630-005-31	s SCREW(M2),NEW TRUSTER,P2
1206	4-287-436-31	s SCREW (M1.7)
1207	4-576-395-01	s GRIP, HANDLE
1208	4-577-869-01	s INSULATOR, MIC
1209	4-736-998-01	s HANDLE
1210	4-737-033-01	s BRACKET (FRONT), MI
1211	4-737-035-01	s HOLDER (FRONT), MI
1212	4-737-040-01	s SHEET (MI), WATERPROOF
1213	4-737-119-01	s INNER, MICROPHONE CABINET
1214	4-737-449-01	s TUBE, SILICON (1.3)
1215	4-741-207-01	s SHEET (MI), ACOUSTIC ISOLATION
1216	2-891-494-31	s SCREW(M2),NEW TRUSTER,P2
1217	3-080-204-21	s SCREW, TAPPING, P2
1218	4-737-083-01	s SHEET (HN), WATERPROOF
1219	4-746-342-01	s SHEET (EFX6 (HN)) S

# EVF



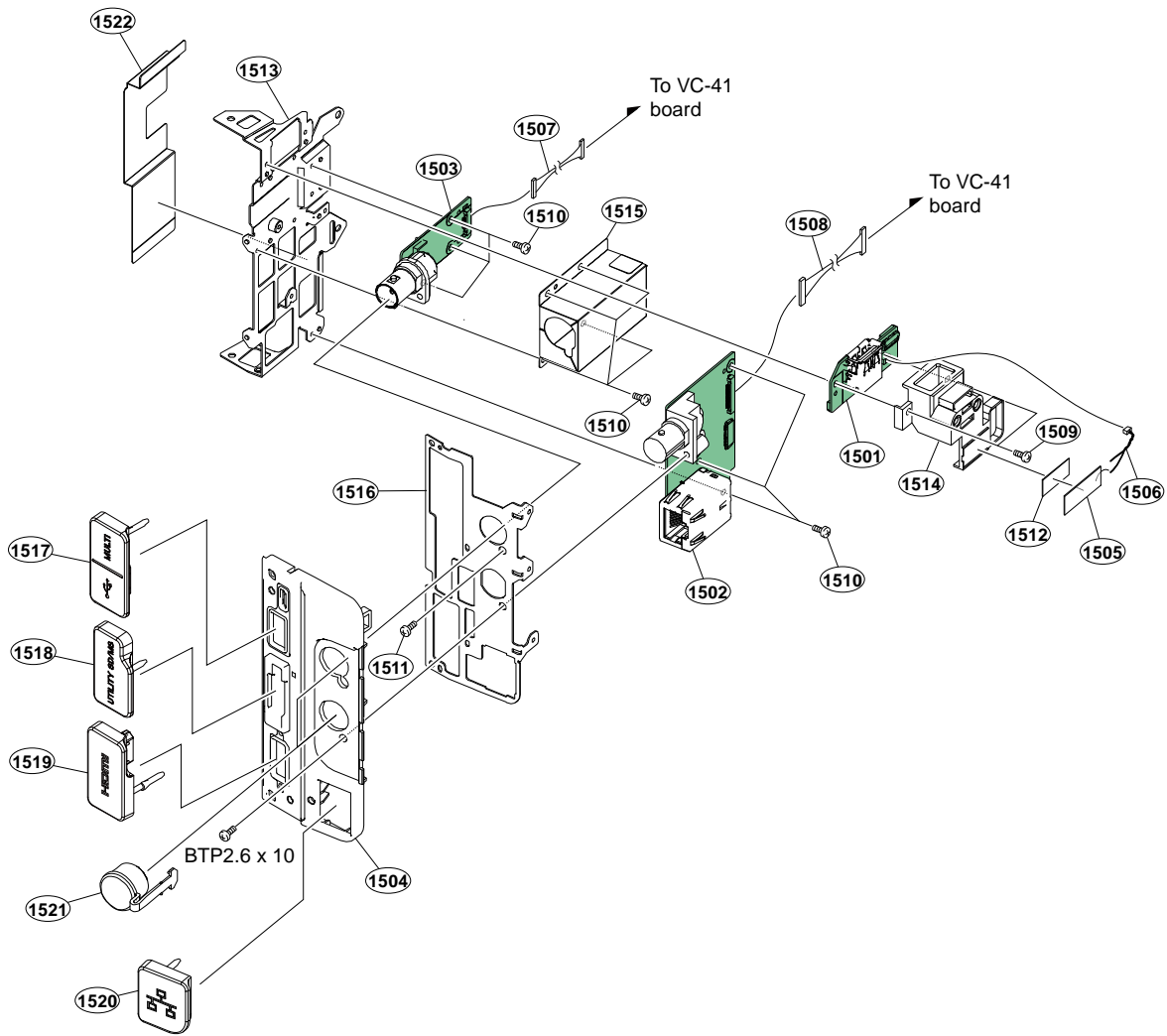
No.	Part No.	SPDescription
1301	A-1902-812-A	s FP-2005 MOUNT
1302	A-2165-562-A	s VF PANEL ASSY EP3N
1303	A-2194-020-A	s VF-98 MOUNT
1304	X-2593-720-2	s VF UNIT ASSY EP3N
1305	X-2596-717-1	s TILT ASSY, VF
1306	X-2597-449-1	s EYE CUP (LARGE) ASSY
1307	1-983-040-11	s PWB, FP-287 FLEXIBLE
1308	3-080-204-21	s SCREW, TAPPING, P2
1309	3-080-205-51	s SCREW, TAPPING, P2
1310	3-080-206-21	s SCREW, TAPPING, P2
1311	4-437-473-01	s SHEET (VF), RADIATION
1312	4-736-999-01	s CABINET, VF
1313	4-737-001-01	s HEAT SINK (972), VF
1314	4-737-002-01	s PLATE, VF ELECTROSTATIC
1315	4-737-004-01	s EYE CUP (972)
1316	4-737-006-01	s HOLDER (972), VF LENS
1317	4-737-007-01	s CABLE (CLAMP), VF
1318	4-737-009-01	s DIAL (972), DIOPTR ADJ
1319	4-737-123-01	s TAPE (VF), GND
1320	4-737-183-01	s CUSHION (VF)

# LCD Panel



No.	Part No.	SPDescription
1401	A-2066-639-A	s SERVICE, LCD BLOCK ASSY
1402	A-2066-640-A	s P CAB M ASSY (SERVICE )
1403	A-2116-011-A	s P CAB C ASSY (SERVICE)
1404	A-2193-981-A	s PD-126 MOUNT
1405	A-2193-983-A	s RS-55 MOUNT
1406	X-2592-325-2	s HINGE S (40400) ASSY
1407	1-963-030-22	s HARNESS (SW-116)
1408	1-967-783-31	s HARNESS (COAXIAL CABLE)
1409	2-630-005-31	s SCREW(M2),NEW TRUSTER,P2
1410	4-136-717-21	s SHEET (K)
1411	4-460-894-02	s COVER (U), HINGE
1412	4-460-895-02	s COVER (O), HINGE
1413	4-460-897-01	s HOLDER, HT
1414	4-460-898-01	s GUARD, HARNESS
1415	4-535-706-11	s ESD GASKET
1416	4-540-599-01	s CUSHION, LCD
1417	4-583-937-01	s PET SHEET (19X38)
1418	4-737-014-01	s FRAME, PD
1419	2-891-494-31	s SCREW(M2),NEW TRUSTER,P2

# Jack



No.	Part No.	SPDescription
1501	A-2193-978-A	s IO-283 MOUNT
1502	A-2194-015-A	s JK-106 MOUNT
1503	A-2194-016-A	s SD-66 MOUNT
1504	X-2596-730-1	s CABINET ASSY (972), JK
1505	1-754-972-12	s NFC ANTENNA
1506	1-846-787-31	s CABLE
1507	1-970-568-11	s HARNESS(IO-DPR-10P)
1508	1-971-952-11	s HARNESS (DPR-AVP)
1509	2-630-005-31	s SCREW(M2),NEW TRUSTER,P2
1510	2-891-494-31	s SCREW(M2),NEW TRUSTER,P2
1511	3-694-181-11	s TYPE1,AROCK PRECISION +P2.6X5
1512	4-587-101-01	s SHEET, NFC ADHESIVE
1513	4-737-129-01	s FRAME, JK
1514	4-737-130-01	s HOLDER, NFC
1515	4-737-131-01	s CASE, SD SHIELD
1516	4-737-133-01	s BRACKET (972), BNC
1517	4-737-134-01	s LID (REAR), USB
1518	4-737-135-01	s LID, SD
1519	4-737-136-01	s LID, HDMI
1520	4-737-137-01	s LID, ETHER
1521	4-737-138-01	s LID, BNC
1522	4-741-104-01	s SHEET (JK), PROTECTION
	7-685-535-19	s SCREW +BTP 2.6X10 TYPE2 N-S

### 5-3. Supplied Accessories

Q'ty	Part No.	SPDescription
1pc	X-2597-449-1	S EYE CUP (LARGE) ASSY
1pc	△ 1-846-424-32	S CORD SET, POWER-SUPPLY [For J]
1pc	△ 1-846-425-33	S CORD SET, POWER-SUPPLY [For UC]
1pc	△ 1-846-428-33	S CORD SET, POWER-SUPPLY [For CEE]
1pc	△ 1-846-433-34	S CORD SET, POWER-SUPPLY [For CN1]
1pc	1-846-615-12	S CABLE, CONNECTION (USB)
1pc	△ 1-848-066-32	S AC POWER SUPPLY CORD SET [For India]
1pc	△ 4-740-707-01	S CD-ROM PACK